

# Word of the Day

## Spring Term 2024

Week 19 – 22nd January 2024



### This Week's Words

**Grasshopper**

tear  
office  
spare  
chipped  
lift

**Shinobi**

tolerate  
mutter  
fixation  
unveil

**VN VOCABULARY**

### Grasshopper Word of the Day

**Word of the Day:** picnic  
*(pic-nic)*

**Word Class:** (verb / noun)

**Definition:** If you tear paper, cloth, or another material, or if it tears, you pull it into two pieces or you pull it so that a hole appears in it.

**Phrases:**

**Synonym:** word  
word

**Antonym:** word  
word

**Rhyme:** word  
word

**Link Word:** word  
word

**Phrase Number One:** The was a hole in Freddie's new school picnic.

**Phrase Number Two:**

### Shinobi Word of the Day

**Word of the Day:** tear  
*(tear)*

**Word Class:** (verb / noun)

**Definition:** If you tear paper, cloth, or another material, or if it tears, you pull it into two pieces or you pull it so that a hole appears in it.

**Phrases:**

**Synonym:** word  
word

**Antonym:** word  
word

**Prefix / Suffix:** word  
word

**Link Word:** word  
word

**Phrase Number One:** The was a tear in Freddie's new school book.

**Phrase Number Two:**

**'Words unlock the doors to a world of understanding...'**

# **This Week's Words**

## **Grasshopper**

**scrape**

**ban**

**cool**

**fill**

**follow**

## **Shinobi**

**envy**

**familiar**

**generous**

**hinder**

**irate**



**VOCABULARY NINJA**

# Grasshopper (Tier 1)

**scrape**

**ban**

**cool**

**fill**

**follow**



**VOCABULARY NINJA**

# **Shinobi (Tier 2)**

**envy**

**familiar**

**generous**

**hinder**

**irate**



**VOCABULARY NINJA**



# Grasshopper Word of the Day

Word of the Day:

Pronunciation / Syllables

**scrape**  
(scrape)

Word Class  
(verb / noun)

## Definition:

If you scrape something from a surface, you remove it, especially by pulling a sharp object over the surface.



Ella **scraped** her knuckles on the school wall.

Synonym:

grate

brush

Antonym:

Prefix / Suffix:

-ed

-ing

Rhyme:

shape

tape

Link Word:

frost

knee



# Grasshopper Word of the Day

Word of the Day:

Pronunciation / Syllables

ban  
(*ban*)

Word Class  
(verb / noun)

Definition:

To ban something means to state officially that it must not be done, shown, or used.



Taking sweets into school was **banned**.

Synonym:

forbit

prohibit

Antonym:

permit

Prefix / Suffix:

-ing

-ed

Rhyme:

man

plan

Link Word:

driving

entrance



# Grasshopper Word of the Day

Word of the Day:

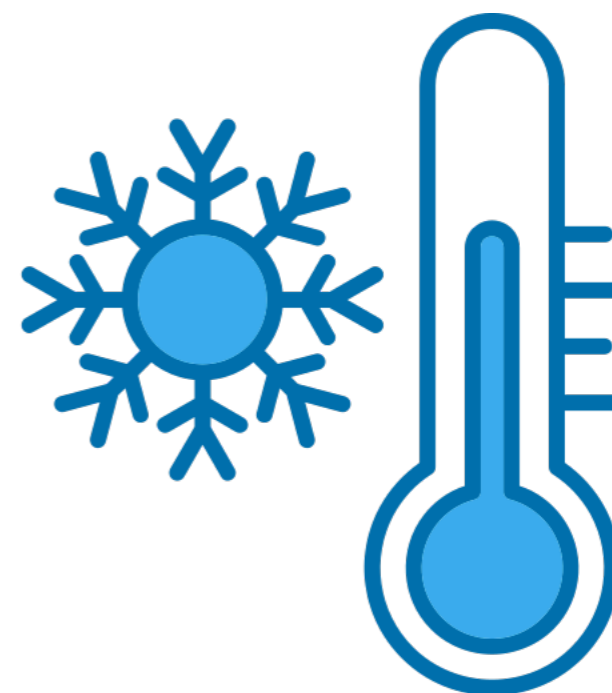
Pronunciation / Syllables

cool  
(cool)

Word Class  
(adjective)

Definition:

Something that is cool has a temperature which is low but not very low.



The weather outside was very **cool**.

Synonym:

chilly

cold

Antonym:

warm

hot

Prefix / Suffix:

un-

-ing

Rhyme:

school

rule

Link Word:

temperature

water



# Grasshopper Word of the Day

Word of the Day:

Pronunciation / Syllables

fill  
(fill)

Word Class  
(verb)

Definition:

If you fill a container or area, or if it fills, an amount of something enters it that is enough to make it full.



Mrs Dobson **filled** the bin with rubbish from the art lesson.

Synonym:

pack

load

Antonym:

empty

open

Prefix / Suffix:

re-

-ed

Rhyme:

still

bill

Link Word:

box

fluid



# Grasshopper Word of the Day

Word of the Day:

Pronunciation / Syllables

**follow**  
(fol-low)

Word Class  
(verb)

**Definition:**

If you follow someone who is going somewhere, you move along behind them because you want to go to the same place.



Daniel **followed** Rupa to the library.

**Synonym:**

accompany

attend

**Antonym:**

lead

**Prefix / Suffix:**

-ing

-ed

**Rhyme:**

hollow

swallow

**Link Word:**

me

steps



# Shinobi Word of the Day

Word of the Day:

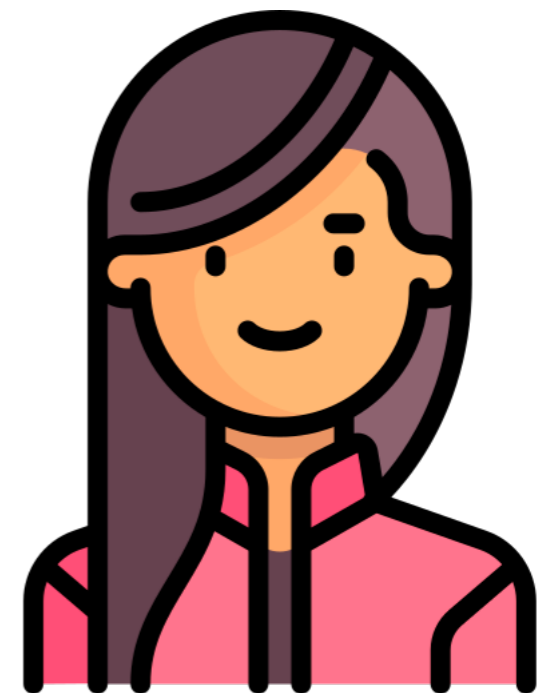
Pronunciation / Syllables

envy  
(en-vy)

Word Class  
(verb / noun)

Definition:

Envy is the feeling you have when you wish you could have the same thing or quality that someone else has.



Joanne **envied** Sarah for her long hair.

Synonym:

jealousy

spite

Antonym:

generosity

Prefix / Suffix:

-ing

Rhyme:

Link Word:

feelings

admiration



# Shinobi Word of the Day

Word of the Day:

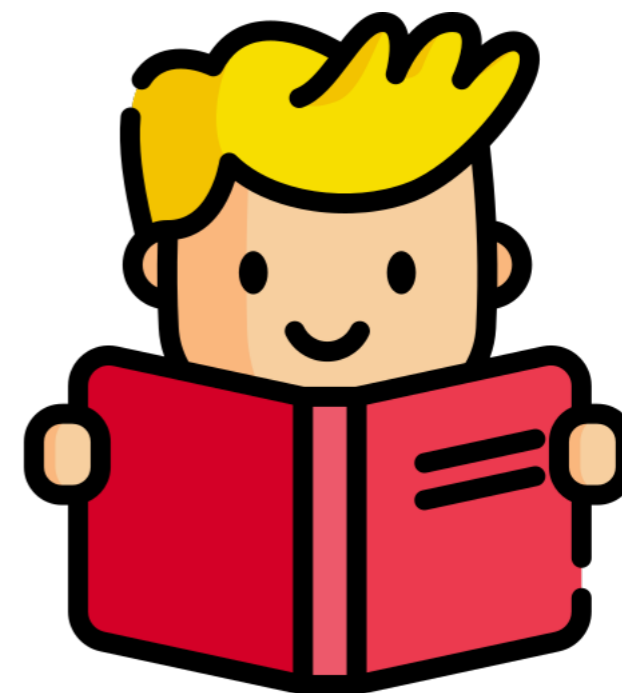
familiar  
(fam-il-iar)

Word Class  
(adjective)

Pronunciation / Syllables

Definition:

If you are familiar  
with something, you know  
or understand it well.



Charlie was already **familiar** with the book.

Synonym:

known  
recognised

Antonym:

unfamiliar

Prefix / Suffix:

un-  
-ity

Rhyme:

Link Word:

face  
author



# Shinobi Word of the Day

Word of the Day:

generous  
(gen-er-ous)

Word Class  
(adjective)

Pronunciation / Syllables

Definition:

A generous person is friendly, helpful, and willing to see the good qualities in someone or something.



Jill was always **generous** with her time for others.

Synonym:

lavish

giving

Antonym:

selfish

Prefix / Suffix

over-

-ly

Rhyme:

Link Word:

always

lent



# Shinobi Word of the Day

Word of the Day:

Pronunciation / Syllables

hinder  
(*hin-der*)

Word Class  
(verb)

Definition:

If something hinders you, it makes it more difficult for you to do something or make progress.



Jane didn't do her homework, which **hindered** her learning.

Synonym:

hamper

obstruct

Antonym:

help

facilitate

Prefix / Suffix:

-ed

-ing

Rhyme:

Link Word:

progress

mobility



# Shinobi Word of the Day

Word of the Day:

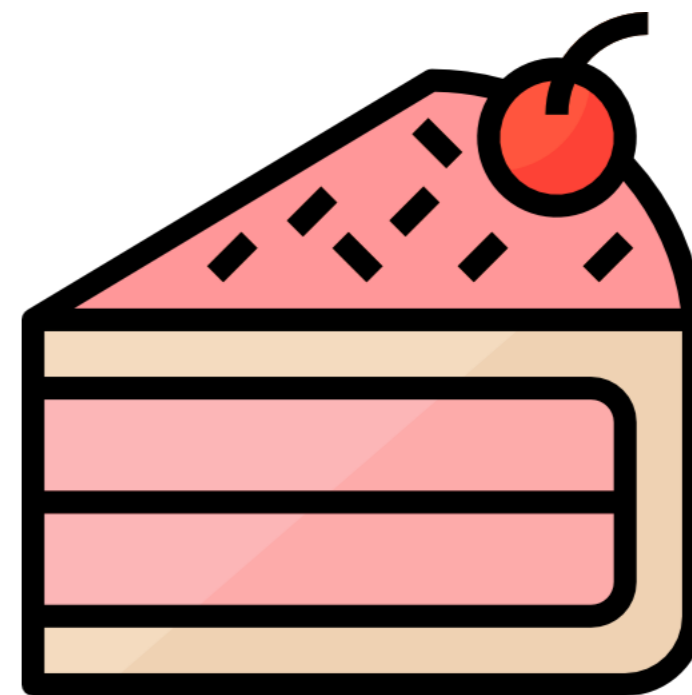
Pronunciation / Syllables

irate  
(i-rate)

Word Class  
(adjective)

Definition:

If someone is irate, they are very angry about something.



Tony was **irate** that there was no cake left at lunchtime.

Synonym:

angry

furious

Antonym:

calm

composed

Prefix / Suffix:

-ly

Rhyme:

state

great

Link Word:

threw

extremely

# Vocabulary Laboratory



Describe / Definition:

Use it in a sentence:

**Focus Word** (write below):

**Word Class:**

**Synonyms:**

(words with same / similar meaning)

**Antonyms:**

(words with opposite meaning)

**Draw your sentence:**

**Rhymes:**

(words that sound the same)

**Link Words:**

(Example: football = pitch, team, player)

# Vocabulary Visualiser

Draw the  
**Grasshopper** words  
and bring them to life.



Word: scrape

Word: fill

Word: cool

Word: follow



# Vocabulary Visualiser

Draw the **Shinobi**  
words and bring  
them to life.



Word: envy

Word: hinder

Word: generous

Word: irate



# Matching Meanings

Draw lines from the **Grasshopper** words to their definitions.



## Grasshopper Word

## Grasshopper Definitions

scrape

Something that is \*\*\* has a temperature which is low but not very low.

# Matching Meanings

Draw lines from the  
**Shinobi** words to  
their definitions.



## Shinobi Word

## Shinobi Definitions

envy

If you are \*\*\* with something, you know or understand it well.



familiar

A \*\*\* person is friendly, helpful, and willing to see the good qualities in someone or something.



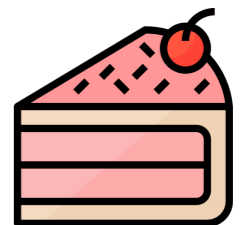
generous

If something \*\*\* you, it makes it more difficult for you to do something or make progress.



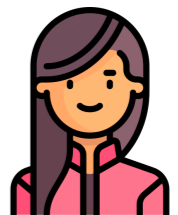
hinder

If someone is \*\*\*, they are very angry about something.



irate

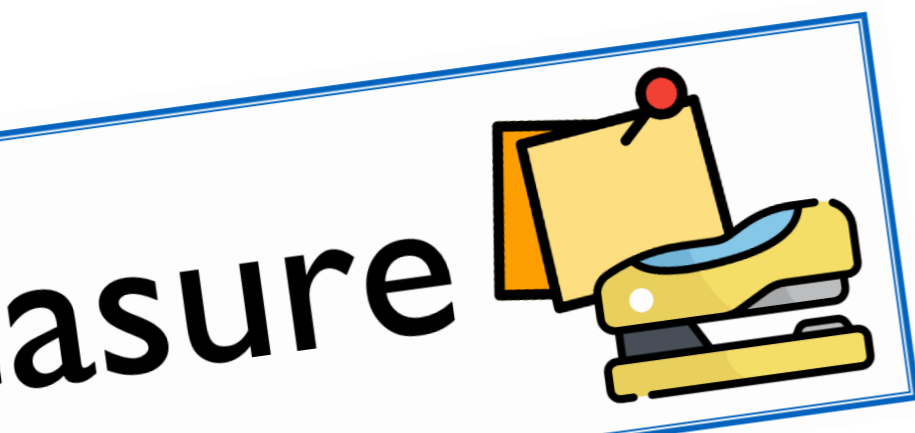
\*\*\* is the feeling you have when you wish you could have the same thing or quality that someone else has.





# Display Slips

The following slides are for classroom display. As you teach each Word of the Day, words can be displayed in the classroom to enable pupils to use the taught vocabulary in an independent manner.





# scrape

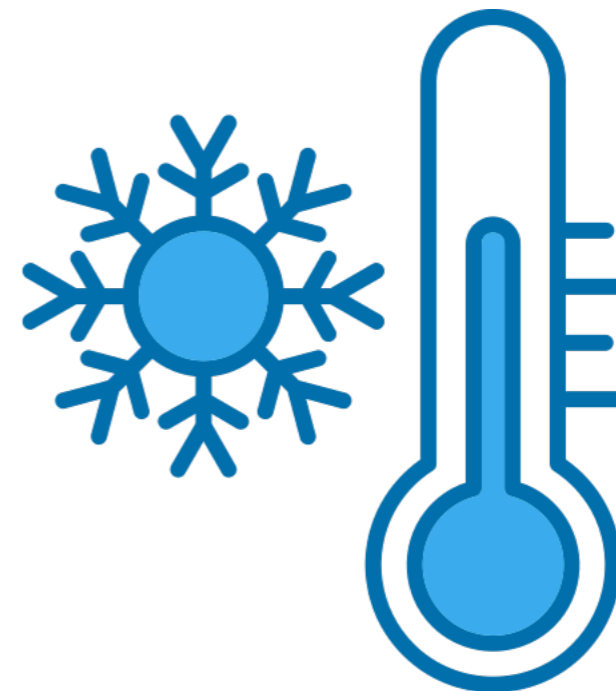


# ban





cool

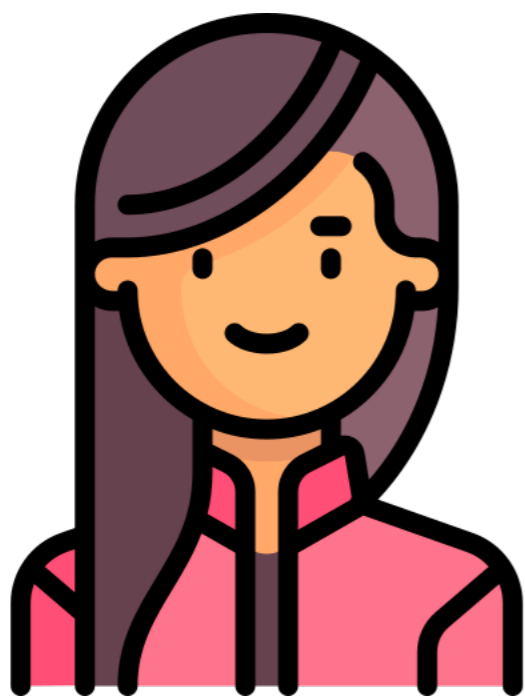


fill





follow



envy





# familiar

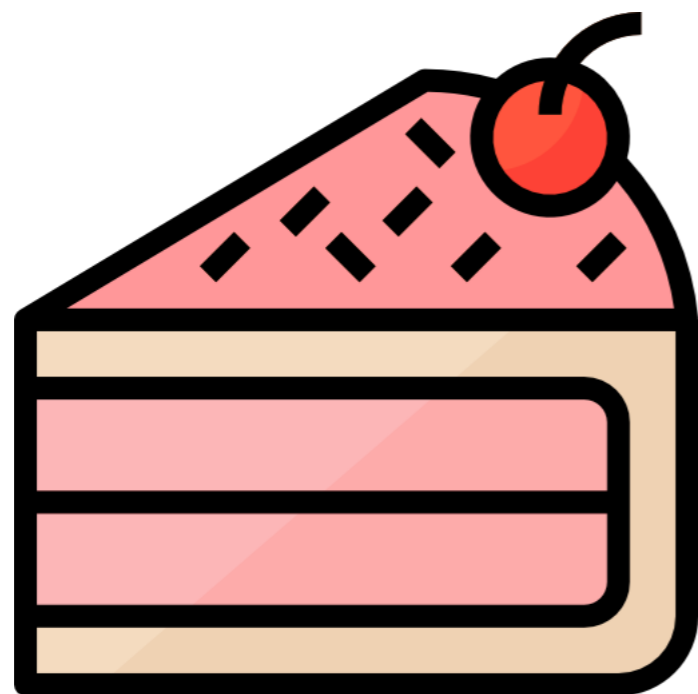


# generous





# hinder



# irate





# Font Variation

The following display slips contain the same words, but have a more regular font, which have a more regular formation of 'a' and 'g'. Futura is the name of the font.




worried



opini

asure



dia





scape

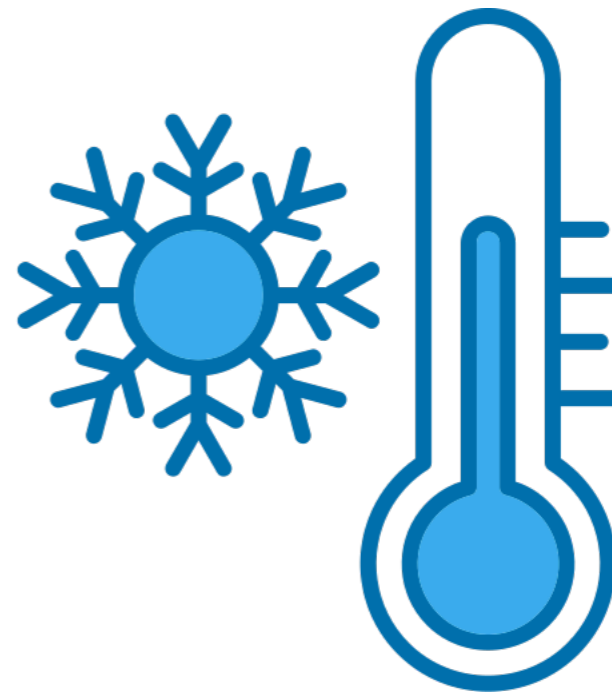


ban





cool

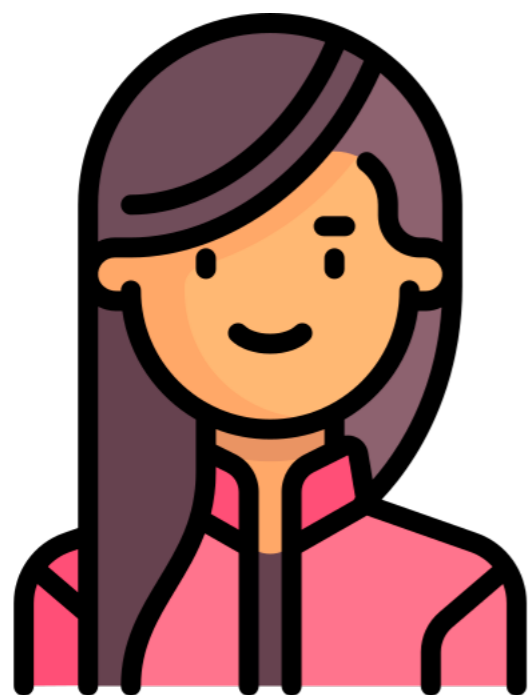


fill





follow

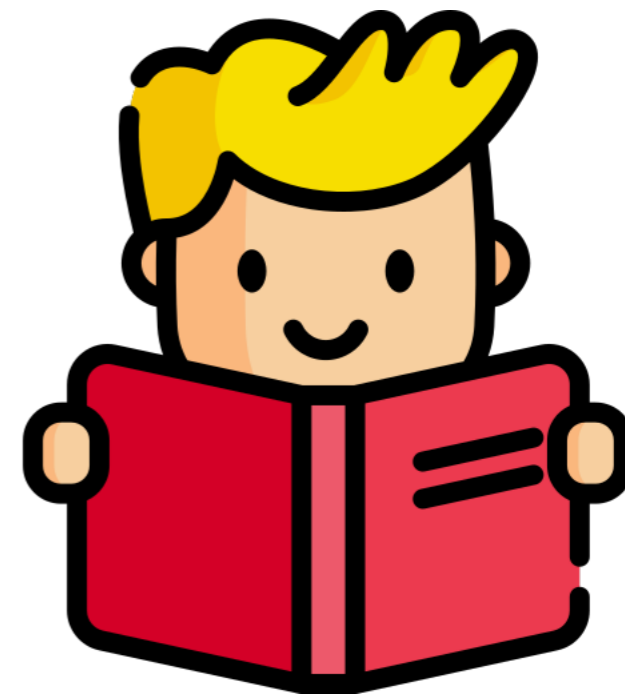


envy





# familiar

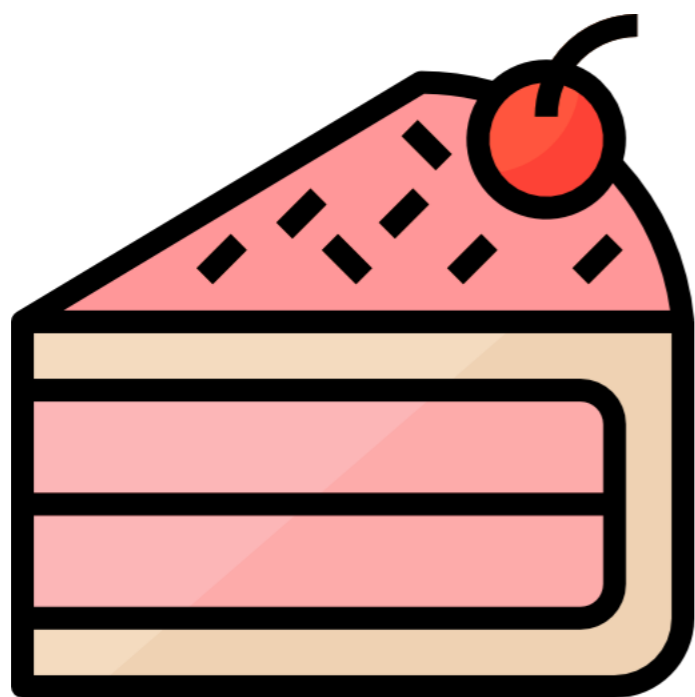
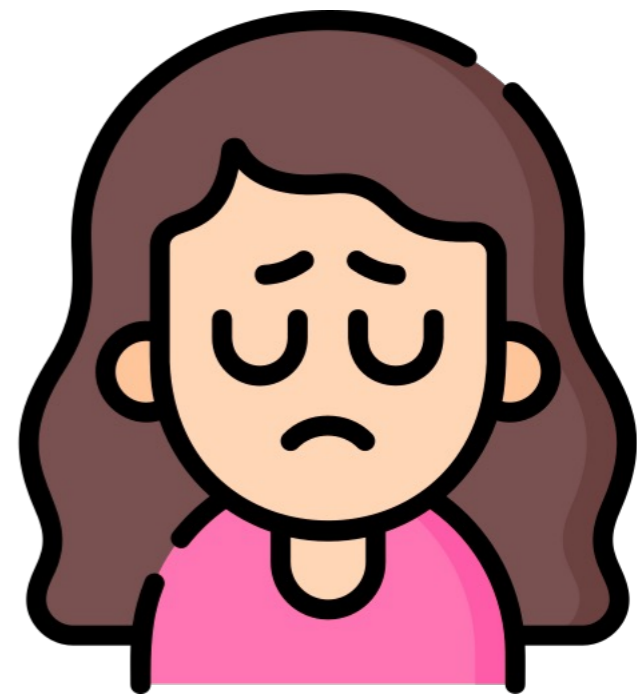


# generous





# hinder



# irate

