

Word of the Day

Autumn Term 2023

Week 7 – 16th October 2023



This Week's Words

Grasshopper

tear
office
spare
chipped
lift

Shinobi

tolerate
mutter
fixation
unveil

VN VOCABULARY

Grasshopper Word of the Day

Word of the Day: picnic
(pic-nic)

Word Class: (verb / noun)

Definition: If you tear paper, cloth, or another material, or if it tears, you pull it into two pieces or you pull it so that a hole appears in it.

Phrases:

Synonym: word
word

Antonym: word
word

Rhyme: word
word

Link Word: word
word

Phrase Number One

Phrase Number Two

The was a hole in Freddie's new school picnic.

Shinobi Word of the Day

Word of the Day: tear
(tear)

Word Class: (verb / noun)

Definition: If you tear paper, cloth, or another material, or if it tears, you pull it into two pieces or you pull it so that a hole appears in it.

Phrases:

Synonym: word
word

Antonym: word
word

Prefix / Suffix: word
word

Link Word: word
word

Phrase Number One

Phrase Number Two

The was a tear in Freddie's new school book.

'Words unlock the doors to a world of understanding...'

This Week's Words

Grasshopper

back

glass

clock

time

dry

Shinobi

doom

mouthful

nerves

effort

ripple



VOCABULARY NINJA

Grasshopper (Tier 1)

back

glass

clock

time

dry



VOCABULARY NINJA

Shinobi (Tier 2)

doom

mouthful

nerves

effort

ripple



VOCABULARY NINJA



Grasshopper Word of the Day

Word of the Day:

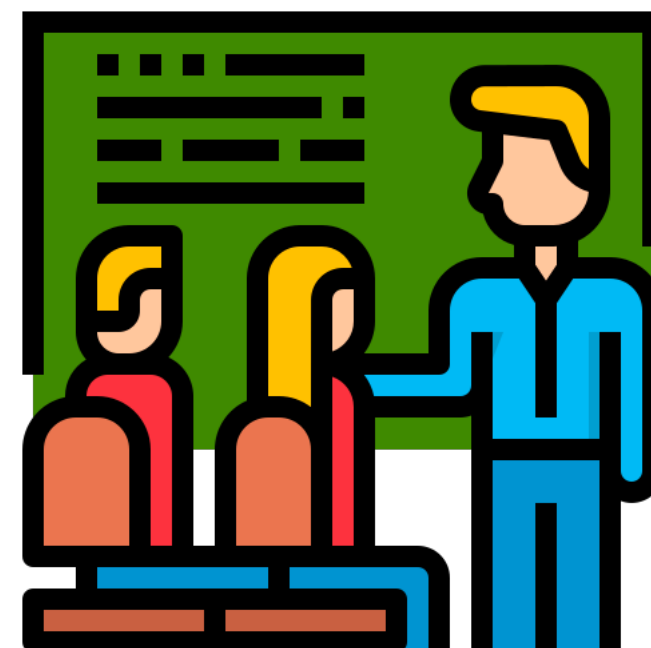
Pronunciation / Syllables

back
(back)

Word Class
(adverb)

Definition:

If you move back, you move in the opposite direction to the one in which you are facing or in which you were moving before.



Alison was asked to move **back** and listen.

Synonym:

rearwards

Antonym:

forwards

Prefix / Suffix:

feed-
-ward

Rhyme:

lack
back

Link Word:

moved
stepped



Grasshopper Word of the Day

Word of the Day:

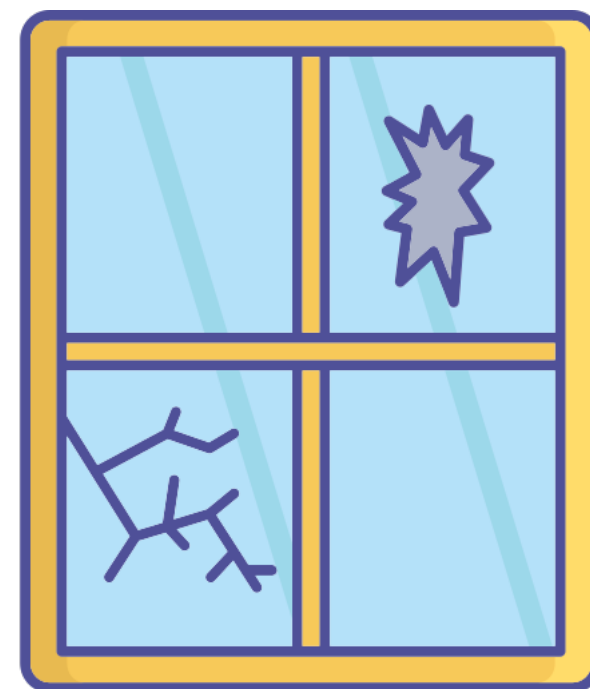
Pronunciation / Syllables

glass
(glass)

Word Class
(noun)

Definition:

Glass is a hard transparent substance that is used to make things such as windows and bottles.



The **glass** in the window has a crack in it.

Synonym:

crystal

Antonym:

Prefix / Suffix:

spy-
-ware

Rhyme:

grass
class

Link Word:

pane
door



Grasshopper Word of the Day

Word of the Day:

Pronunciation / Syllables

clock
(clock)

Word Class
(noun)

Definition:

A clock is an instrument, for example in a room or on the outside of a building, that shows what time of day it is.



The class **clock** was 5 minutes behind time.

Synonym:

timepiece

Antonym:

Prefix / Suffix:

over-

-wise

Rhyme:

block

rock

Link Word:

ticking

wall



Grasshopper Word of the Day

Word of the Day:

Pronunciation / Syllables

time
(*time*)

Word Class
(noun)

Definition:

Time is what we measure in minutes, hours, days, and years.



Mr Grant told the children that it was **time** for lunch.

Synonym:

hour
occasion

Antonym:

Prefix / Suffix:

show-
-less

Rhyme:

crime
prime

Link Word:

passed
changed



Grasshopper Word of the Day

Word of the Day:

Pronunciation / Syllables

dry
(dry)

Word Class
(adjective / verb)

Definition:

If something is dry, there is no water or moisture on it or in it.



Emerson needed a **dry** surface to try out the experiment.

Synonym:

parched

wilted

Antonym:

fresh

moist

Prefix / Suffix:

-ing

-ness

Rhyme:

why

eye

Link Word:

cloth

paint



Shinobi Word of the Day

Word of the Day:

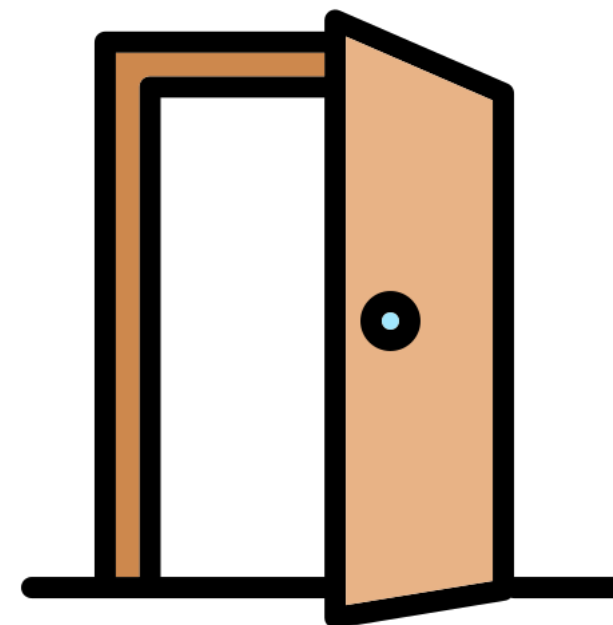
Pronunciation / Syllables

doom
(*doom*)

Word Class
(noun / verb)

Definition:

Doom is a terrible future state or event which you cannot prevent.



Yang felt **doom** when the school doors opened for registration.

Synonym:

downfall

ruin

Antonym:

happy

lucky

Prefix / Suffix:

-ed

-ing

Rhyme:

room

boom

Link Word:

gloom

mood



Shinobi Word of the Day

Word of the Day: **mouthful**

Word Class
(noun)

Pronunciation / Syllables

(mouth-ful)

Definition:

A mouthful of drink or food is the amount that you put or have in your mouth.



The **mouthful** of cake that Murali had was delicious.

Synonym:

taste

nibble

Antonym:

Prefix / Suffix:

-s

Rhyme:

Link Word:

gulped

food



Shinobi Word of the Day

Word Class
(noun)

Word of the Day:

nerves
(*nerves*)

Pronunciation / Syllables

Definition:

A person's steadiness and courage in a demanding situation.



Getting changed for sports got on Fern's **nerves**.

Synonym:

confidence

assurance

Antonym:

timidly

Prefix / Suffix:

Rhyme:

curves

serves

Link Word:

all

on my



Shinobi Word of the Day

Word of the Day:

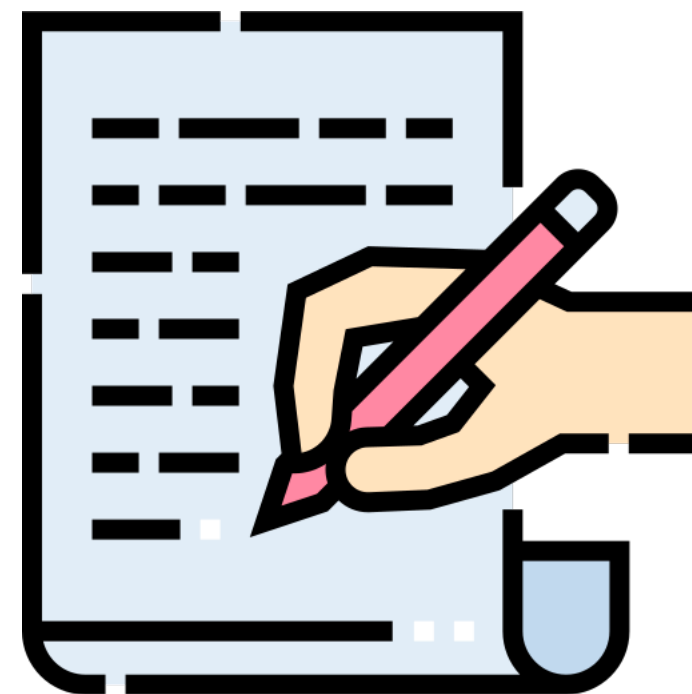
Pronunciation / Syllables

effort
(ef-fort)

Word Class
(noun)

Definition:

If you make an effort to do something, you try very hard to do it.



Dale put extra **effort** into his writing.

Synonym:

attempt

try

Antonym:

Prefix / Suffix:

-less

-ful

Rhyme:

Link Word:

hide

huge



Shinobi Word of the Day

Word of the Day:

Pronunciation / Syllables

ripple
(rip-ple)

Word Class
(noun / verb)

Definition:

Ripples are little waves on the surface of water caused by the wind or by something moving in or on the water.



Joanne made a **ripple** in the puddle by jumping into it.

Synonym:

wave

wrinkle

Antonym:

Prefix / Suffix

-ing

-ed

Rhyme:

tipple

triple

Link Word:

gentle

forceful

Vocabulary Laboratory



Describe / Definition:

Use it in a sentence:

Focus Word (write below):

Word Class:

Synonyms:

(words with same / similar meaning)

Antonyms:

(words with opposite meaning)

Draw your sentence:

Rhymes:

(words that sound the same)

Link Words:

(Example: football = pitch, team, player)

Vocabulary Visualiser

Draw the
Grasshopper words
and bring them to life.



Word: back

Word: clock

Word: glass

Word: dry



Vocabulary Visualiser

Draw the **Shinobi**
words and bring
them to life.



Word: doom

Word: effort

Word: mouthful

Word: ripple



Matching Meanings

Draw lines from the **Grasshopper** words to their definitions.

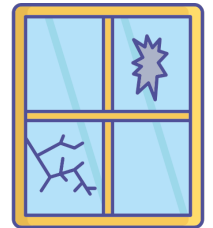


Grasshopper Word

Grasshopper Definitions

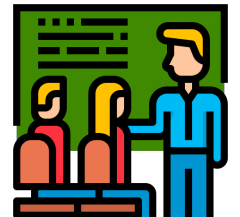
back

*** is a hard transparent substance that is used to make things such as windows and bottles.



glass

If you move ***, you move in the opposite direction to the one in which you are facing or in which you were moving before.



clock

*** is what we measure in minutes, hours, days, and years.



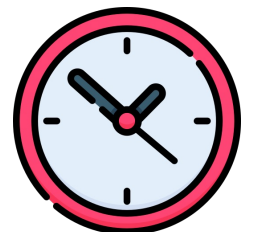
time

If something is ***, there is no water or moisture on it or in it.



dry

A *** is an instrument, for example in a room or on the outside of a building, that shows what time of day it is.



Matching Meanings

Draw lines from the **Shinobi** words to their definitions.



Shinobi Word

Shinobi Definitions

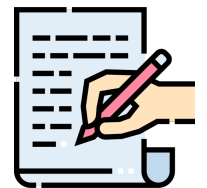
doom

A person's steadiness and courage in a demanding situation.



mouthful

If you make an *** to do something, you try very hard to do it.



nerves

A *** of drink or food is the amount that you put or have in your mouth.



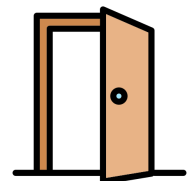
effort

*** are little waves on the surface of water caused by the wind or by something moving in or on the water.



ripple

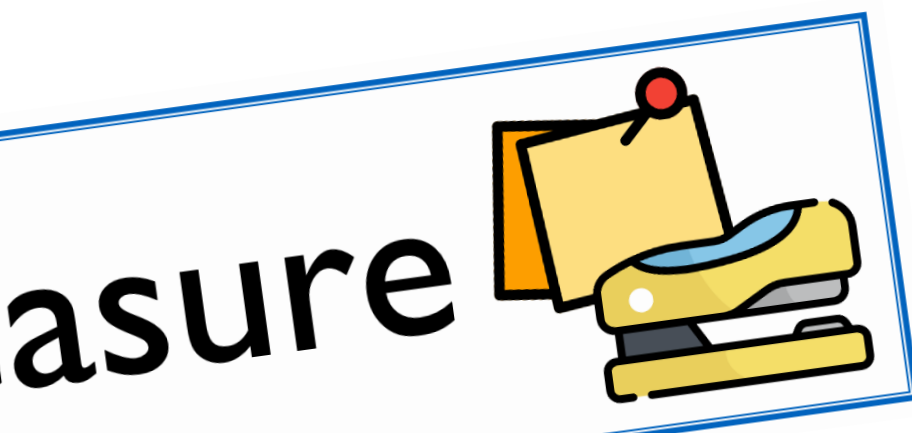
*** is a terrible future state or event which you cannot prevent.





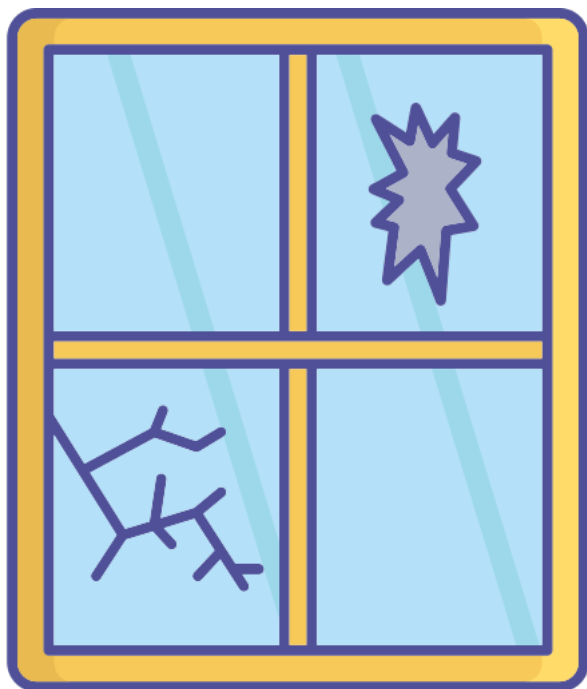
Display Slips

The following slides are for classroom display. As you teach each Word of the Day, words can be displayed in the classroom to enable pupils to use the taught vocabulary in an independent manner.





back

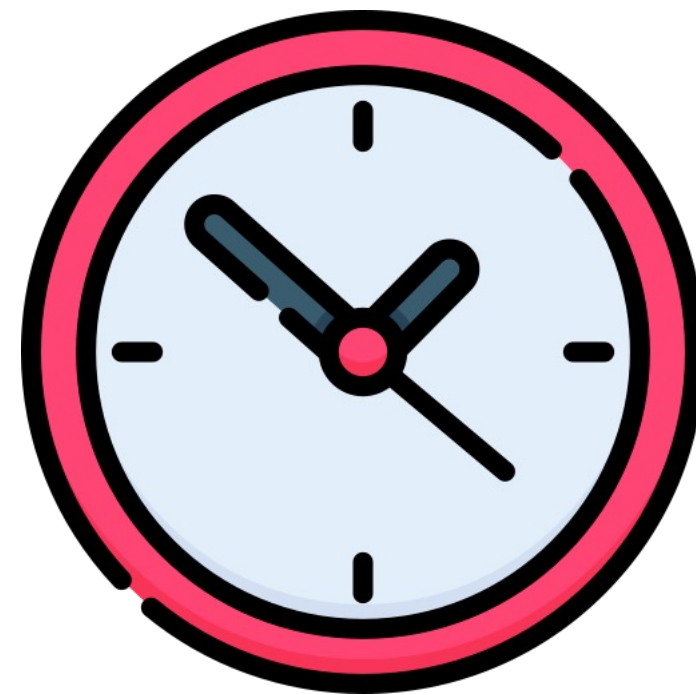


glass





clock

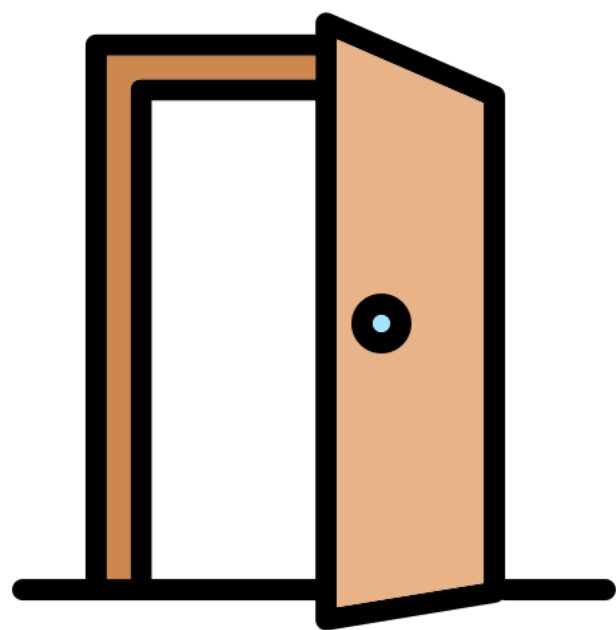


time





dry



doom





mouthful

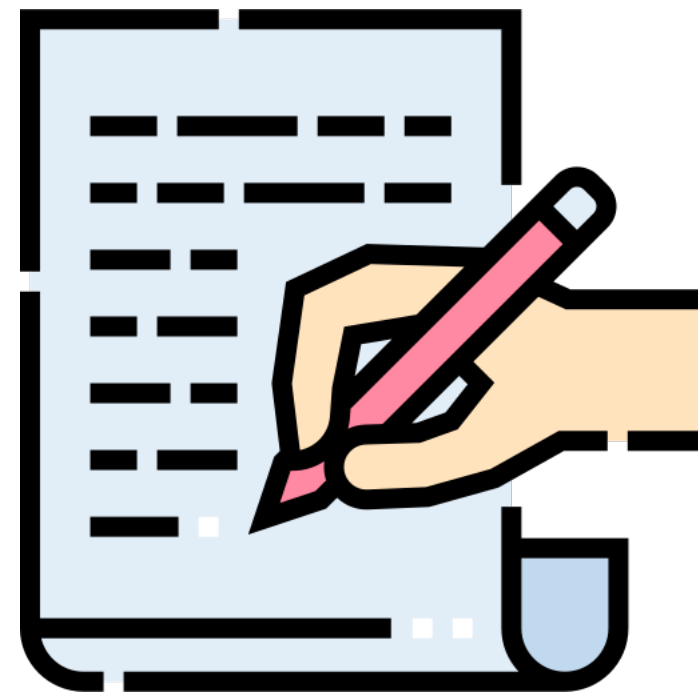


nerves





effort



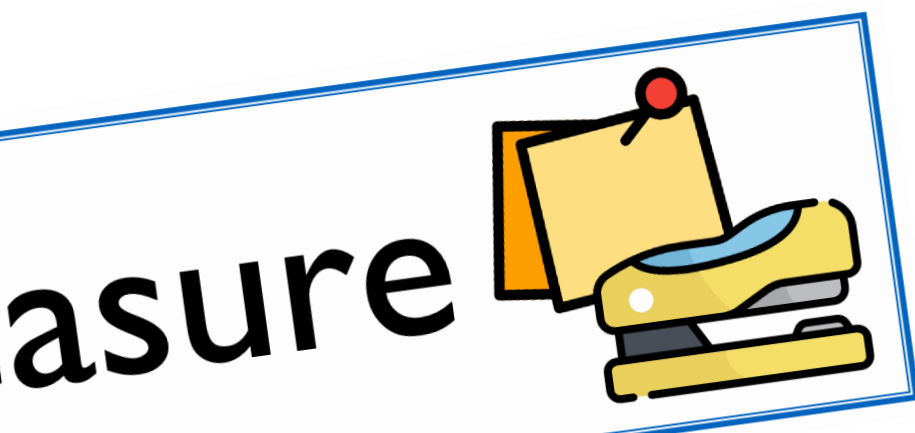
ripple





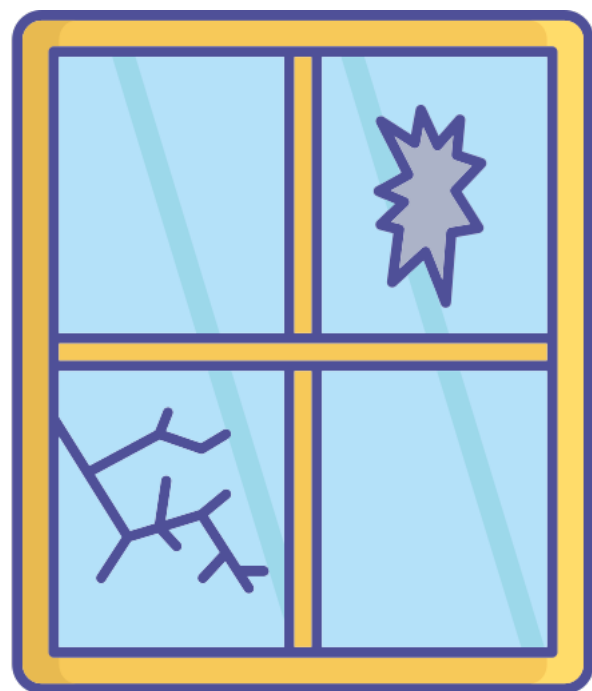
Font Variation

The following display slips contain the same words, but have a more regular font, which have a more regular formation of 'a' and 'g'. Futura is the name of the font.





back



glass





clock

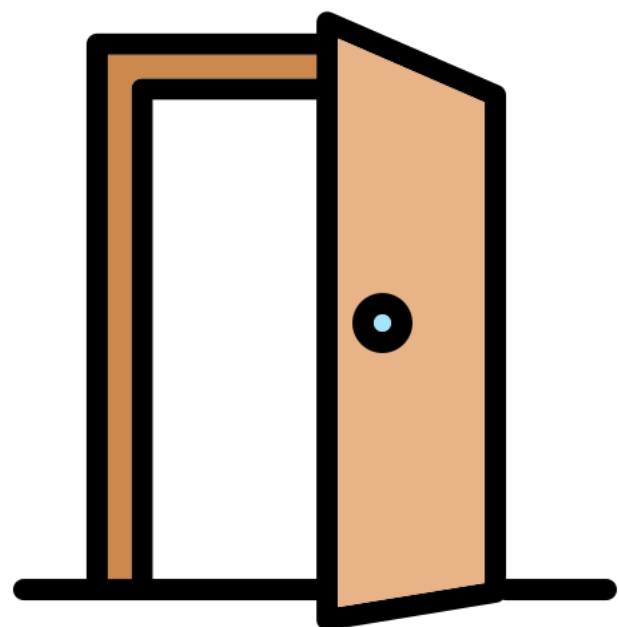


time





dry

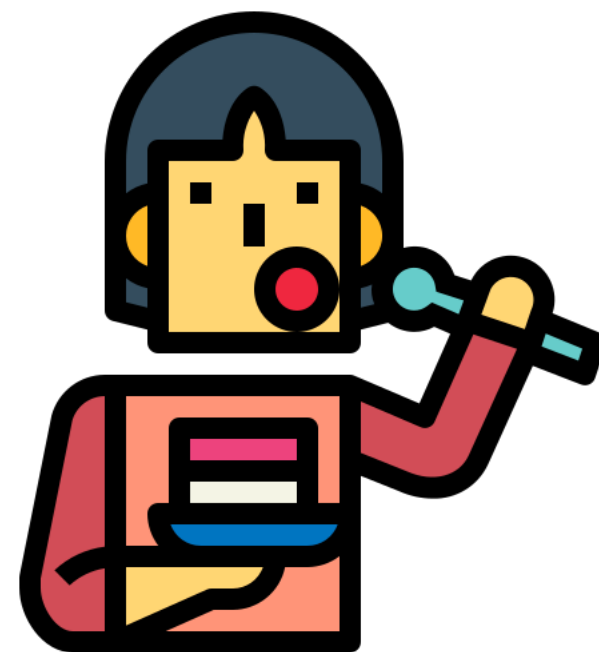


doom





mouthful

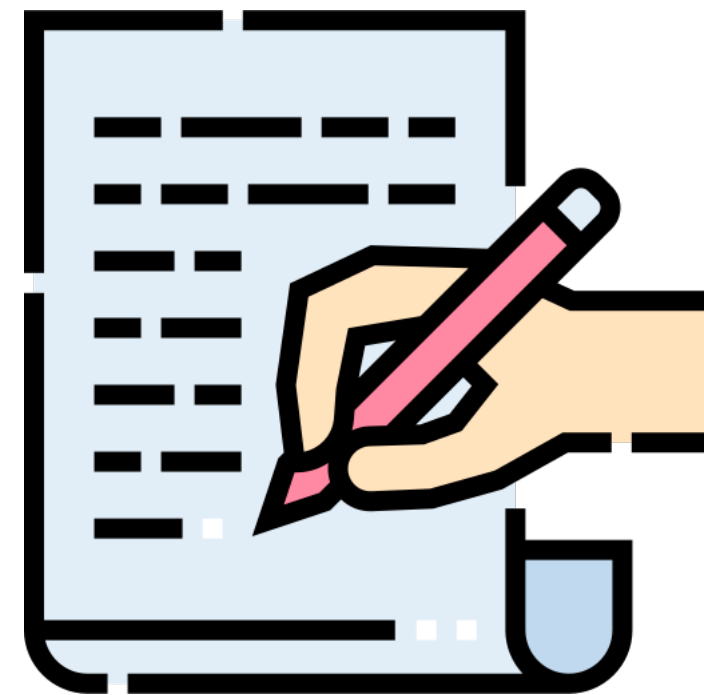


nerves





effort



ripple

