

# Word of the Day

## Autumn Term 2023

Week 9 – 30th October 2023



**This Week's Words**

**Grasshopper**

tear  
office  
spare  
chipped  
lift

**Shinobi**

tolerate  
mutter  
fixation  
unveil

**VN VOCABULARY**

**Grasshopper Word of the Day**

**Word of the Day:** picnic  
**Word Class:** (pic-nic) (verb / noun)

**Definition:** If you tear paper, cloth, or another material, or if it tears, you pull it into two pieces or you pull it so that a hole appears in it.

**Phrases:**

**Synonym:** word  
word

**Antonym:** word  
word

**Rhyme:** word  
word

**Link Word:** word  
word

**Phrase Number One**

**Phrase Number Two**

**Shinobi Word of the Day**

**Word of the Day:** tear  
**Word Class:** (tear) (verb / noun)

**Definition:** If you tear paper, cloth, or another material, or if it tears, you pull it into two pieces or you pull it so that a hole appears in it.

**Phrases:**

**Synonym:** word  
word

**Antonym:** word  
word

**Prefix / Suffix:** word  
word

**Link Word:** word  
word

**Phrase Number One**

**Phrase Number Two**

**'Words unlock the doors to a world of understanding...'**

# This Week's Words

## Grasshopper

**low**

**chat**

**pond**

**accident**

**owe**

## Shinobi

**bulge**

**prowl**

**hatch**

**favour**

**cradle**



**VOCABULARY NINJA**

# Grasshopper (Tier 1)

low

chat

pond

accident

owe



**VOCABULARY NINJA**

# Shinobi (Tier 2)

**bulge**

**prowl**

**hatch**

**favour**

**cradle**



**VOCABULARY NINJA**



# Grasshopper Word of the Day

Word of the Day:

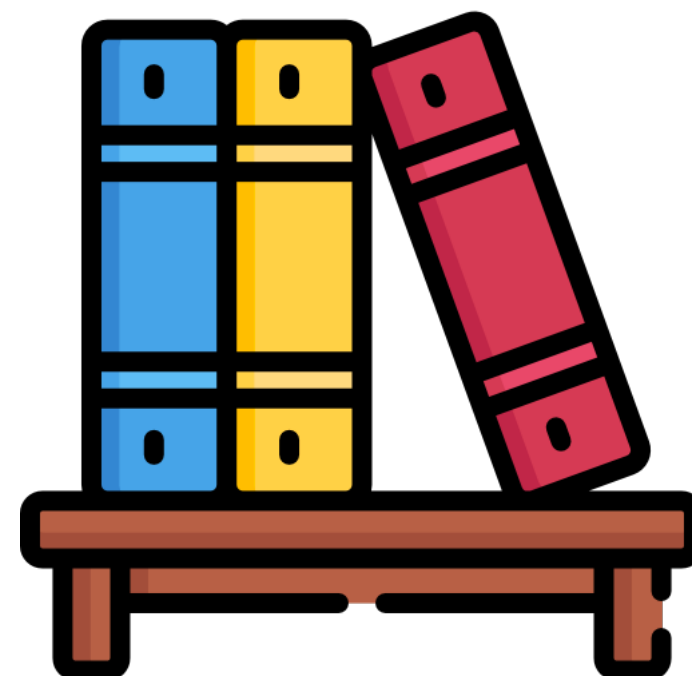
Pronunciation / Syllables

low  
(low)

Word Class  
(adjective)

## Definition:

Something that is low measures only a short distance from the bottom to the top, or from the ground to the top.



The bookshelf was **low** enough for the children to place books on it.

Synonym:

short

little

Antonym:

high

Prefix / Suffix:

-er

-est

Rhyme:

go

know

Link Word:

down

sun



# Grasshopper Word of the Day

Word of the Day:

Pronunciation / Syllables

chat  
(*chat*)

Word Class  
(verb / noun)

Definition:

When people chat, they talk to each other in an informal and friendly way.



Paisley was told off for **chatting** in class.

Synonym:

gossip

babble

Antonym:

Prefix / Suffix:

-ing

-ed

Rhyme:

that

flat

Link Word:

people

friends



# Grasshopper Word of the Day

Word of the Day:

Pronunciation / Syllables

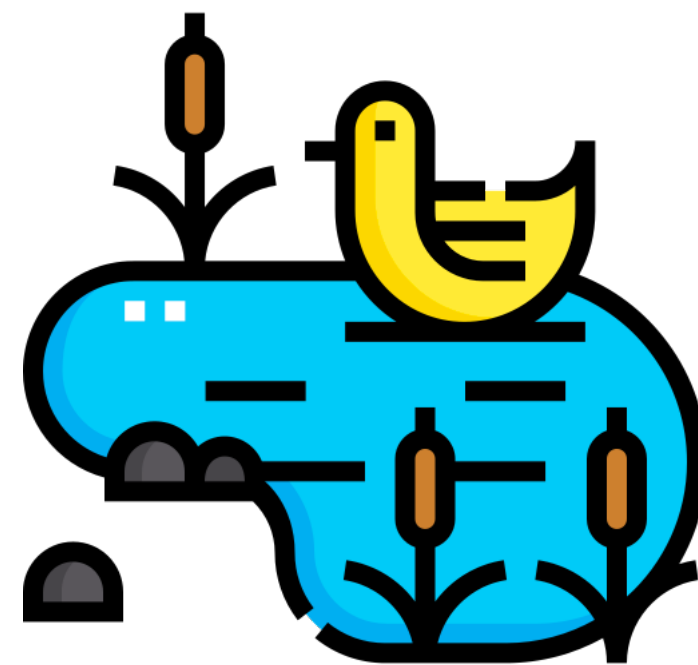
pond  
(*pond*)

Word Class  
(noun)

## Definition:

A pond is a small area of water that is smaller than a lake.

Ponds are often made artificially.



Mia went to the local **pond** to feed the ducks.

Synonym:

pool

puddle

Antonym:

Prefix / Suffix:

Rhyme:

fond

wand

Link Word:

deep

duck



# Grasshopper Word of the Day

Word of the Day:

**accident**  
(*ac-ci-dent*)

Word Class  
(noun)

Pronunciation / Syllables

## Definition:

An accident happens when a vehicle hits a person, an object, or another vehicle, causing injury or damage.



Tamara had an **accident** in the playground.

Synonym:

mishap  
calamity

Antonym:

Prefix / Suffix:

-al  
-ally

Rhyme:

Link Word:

serious  
home





# Grasshopper Word of the Day

Word of the Day:

Pronunciation / Syllables

owe  
(owe)

Word Class  
(verb)

## Definition:

If you owe money to someone, they have lent it to you and you have not yet paid it back. You can also say that the money is owing.



Jason **owed** £10 for the school trip.

Synonym:

in debt

Antonym:

settle up

Prefix / Suffix:

-ed

-ing

Rhyme:

show

low

Link Word:

money

rent



# Shinobi Word of the Day

Word of the Day:

Pronunciation / Syllables

**bulge**  
(*bulge*)

Word Class  
(verb / noun)

Definition:

If something such as a person's stomach bulges, it sticks out.



Madison's lunchbox was **bulging** with food.

Synonym:

swelling

bump

Antonym:

Prefix / Suffix:

-ed

-ing

Rhyme:

indulge

Link Word:

out

veins



# Shinobi Word of the Day

Word of the Day:

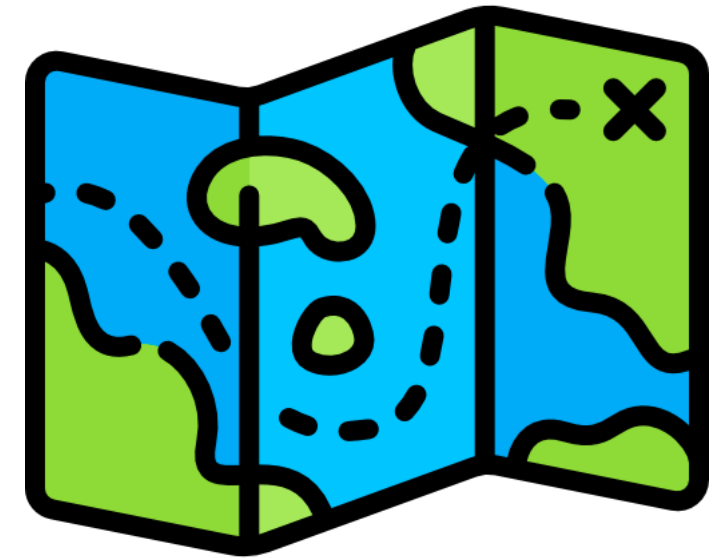
Pronunciation / Syllables

**prowl**  
(prowl)

Word Class  
(verb)

## Definition:

If an animal or a person prowls around, they move around quietly, for example when they are hunting.



Fred was on the **prowl** for a glue stick.

Synonym:

skulk

sneak

Antonym:

Prefix / Suffix:

-ing

-ed

Rhyme:

foul

towel

Link Word:

around

lion



# Shinobi Word of the Day

Word of the Day:

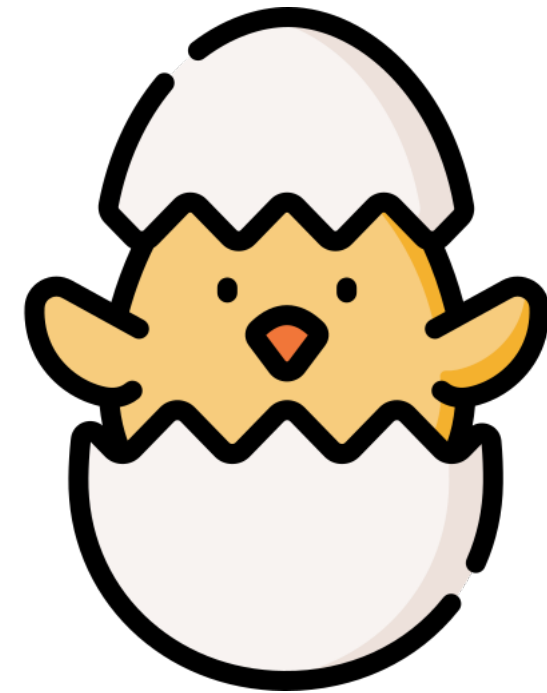
Pronunciation / Syllables

hatch  
(*hatch*)

Word Class  
(verb)

## Definition:

When a baby bird, insect, or other animal hatches, or when it is hatched, it comes out of its egg by breaking the shell.



The children watched the chick's hatch.

Synonym:

incubate

Antonym:

Prefix / Suffix

-ed

-ing

Rhyme:

catch

thatch

Link Word:

chick

egg



# Shinobi Word of the Day

Word of the Day:

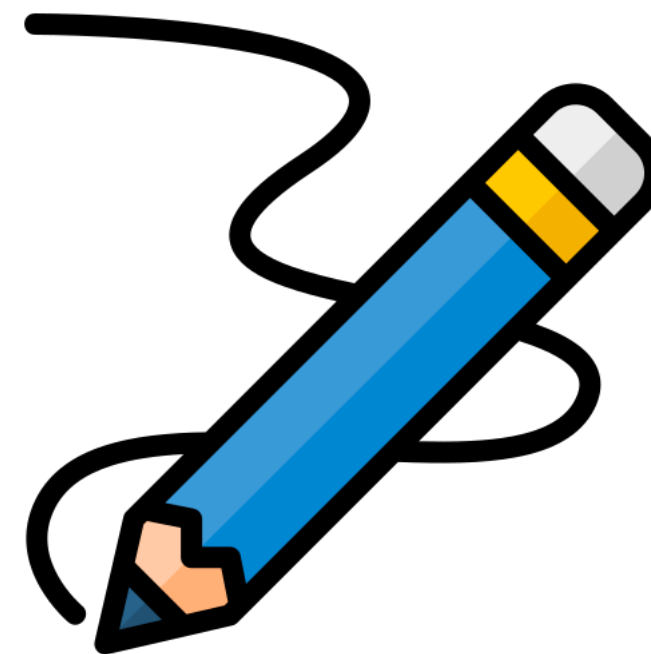
Pronunciation / Syllables

**favour**  
(*fa-vour*)

Word Class  
(noun)

Definition:

If you do someone a favour, you do something for them even though you do not have to.



Ellen asked Dean for a **favour** and lend her his pencil.

Synonym:

service  
courtesy

Antonym:

disservice

Prefix / Suffix:

-ed  
-ite

Rhyme:

savour  
flavour

Link Word:

return  
friendship



# Shinobi Word of the Day

Word of the Day:

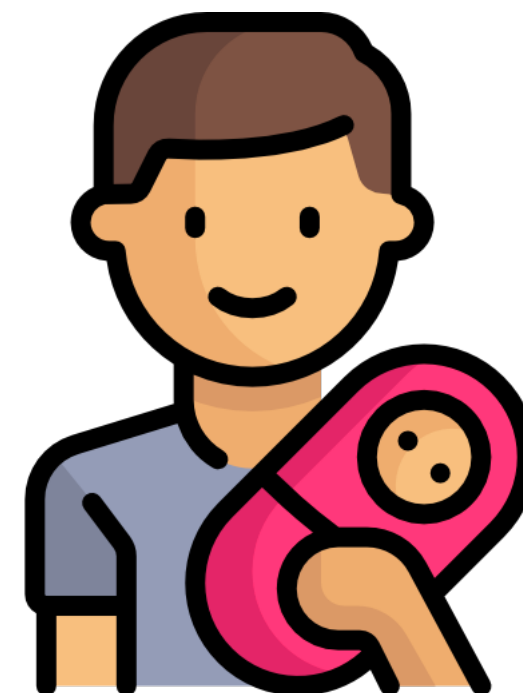
Pronunciation / Syllables

cradle  
(*cra-dle*)

Word Class  
(verb / noun)

## Definition:

If you cradle someone or something in your arms or hands, you hold them carefully and gently.



Tad **cradled** the doll like a baby.

Synonym:

hold  
support

Antonym:

Prefix / Suffix:

-ed  
-ing

Rhyme:

ladle

Link Word:

arms  
baby

# Vocabulary Laboratory



Describe / Definition:

Use it in a sentence:

**Focus Word** (write below):

**Word Class:**

**Synonyms:**

(words with same / similar meaning)

**Antonyms:**

(words with opposite meaning)

**Draw your sentence:**

**Rhymes:**

(words that sound the same)

**Link Words:**

(Example: football = pitch, team, player)

# Vocabulary Visualiser

Draw the  
**Grasshopper** words  
and bring them to life.



Word: low

Word: pond

Word: chat

Word: accident





# Vocabulary Visualiser

Draw the **Shinobi**  
words and bring  
them to life.



Word: bulge

Word: hatch

Word: prowl

Word: cradle



# Matching Meanings

Draw lines from the **Grasshopper** words to their definitions.



## Grasshopper Word

## Grasshopper Definitions

low

When people \*\*\*, they talk to each other in an informal and friendly way.



chat

An \*\*\* happens when a vehicle hits a person, an object, or another vehicle, causing injury or damage.



pond

Something that is \*\*\* measures only a short distance from the bottom to the top, or from the ground to the top.



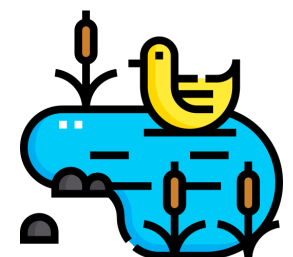
accident

If you \*\*\* money to someone, they have lent it to you and you have not yet paid it back. You can also say that the money is \*\*\*.



owe

A \*\*\* is a small area of water that is smaller than a lake. \*\*\* are often made artificially.



# Matching Meanings

Draw lines from the **Shinobi** words to their definitions.

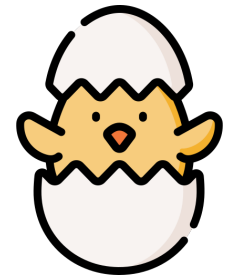


## Shinobi Word

## Shinobi Definitions

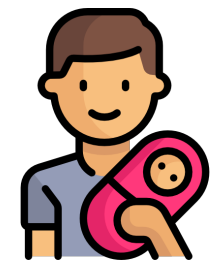
bulge

When a baby bird, insect, or other animal \*\*\*, or when it is \*\*\*, it comes out of its egg by breaking the shell.



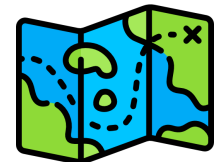
prowl

If you \*\*\* someone or something in your arms or hands, you hold them carefully and gently.



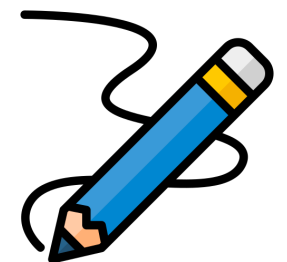
hatch

If an animal or a person \*\*\* around, they move around quietly, for example when they are hunting.



favour

If you do someone a \*\*\*, you do something for them even though you do not have to.



cradle

If something such as a person's stomach \*\*\*, it sticks out.





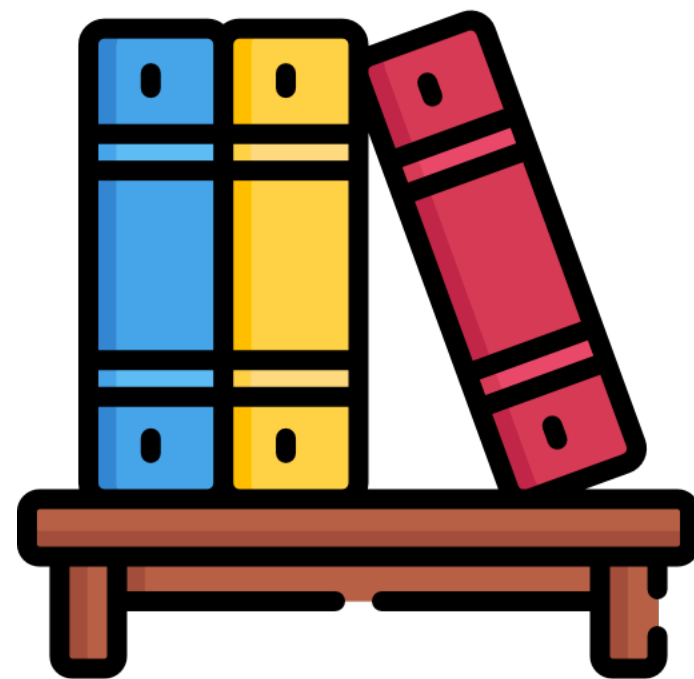
# Display Slips

The following slides are for classroom display. As you teach each Word of the Day, words can be displayed in the classroom to enable pupils to use the taught vocabulary in an independent manner.





low

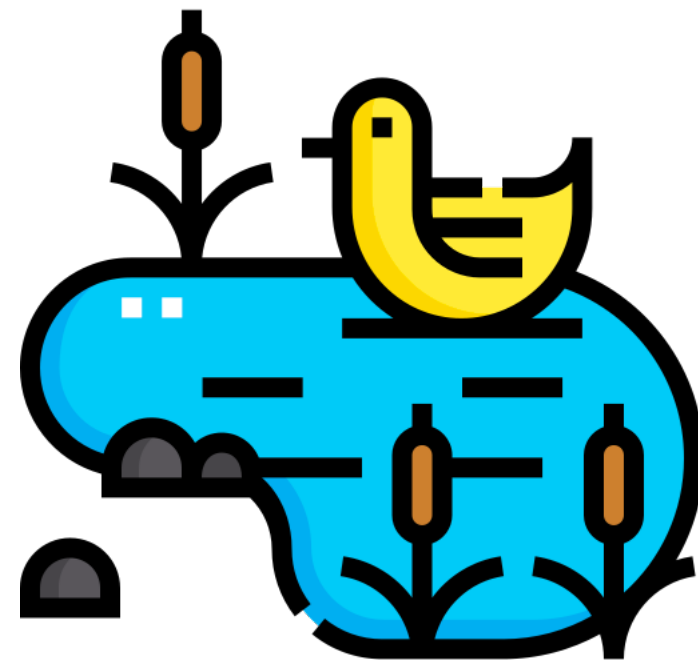


chat





pond



accident





owe

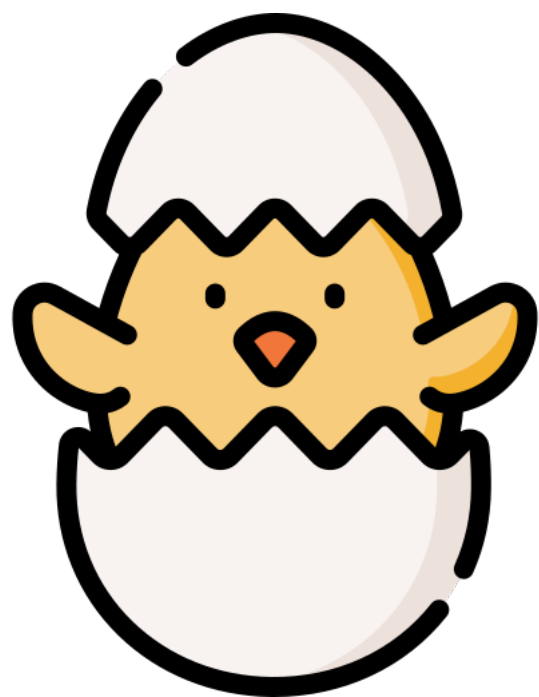
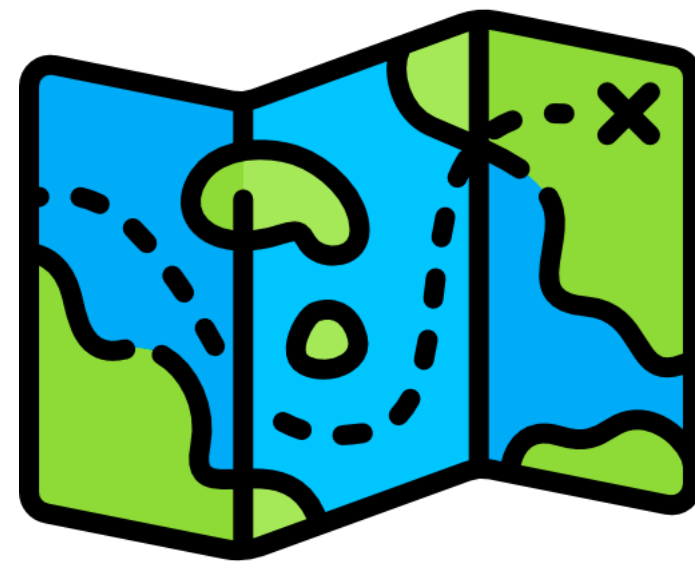


bulge





prowl



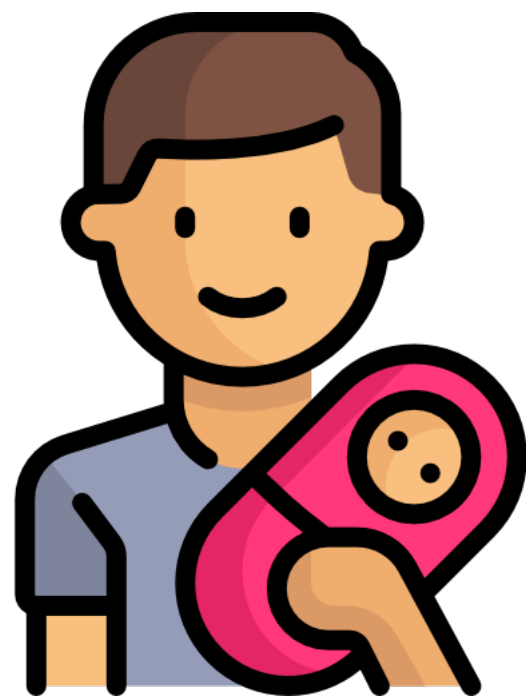
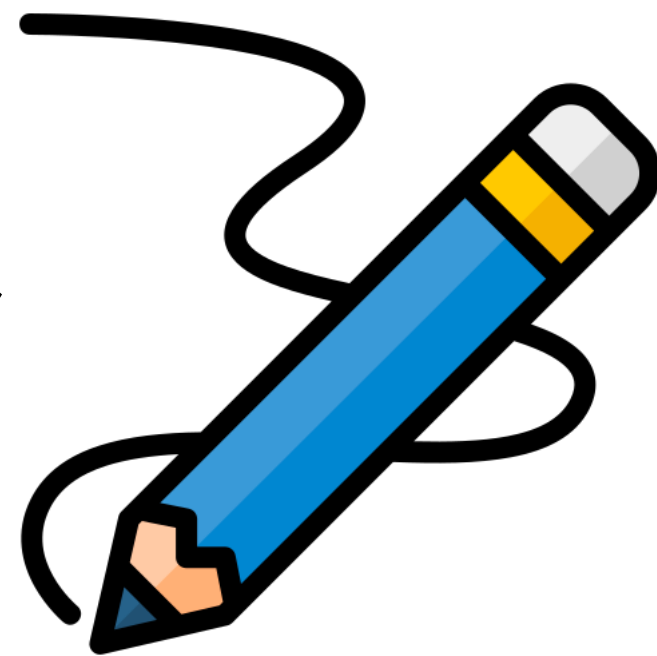
hatch







# favour



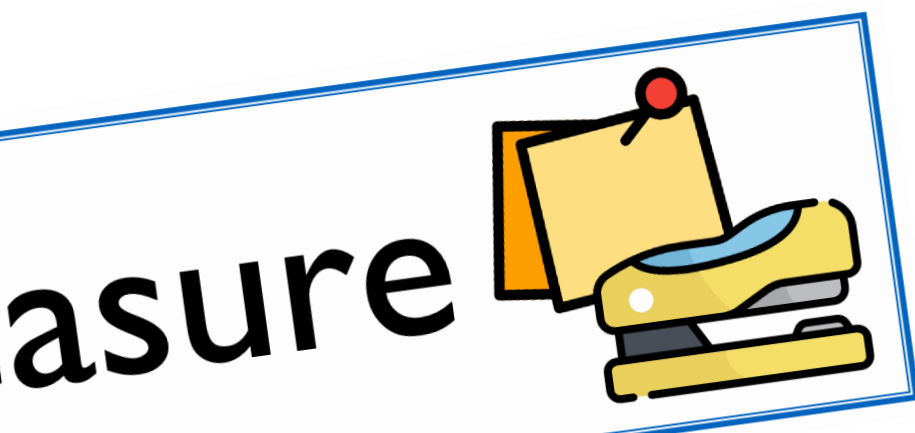
# cradle





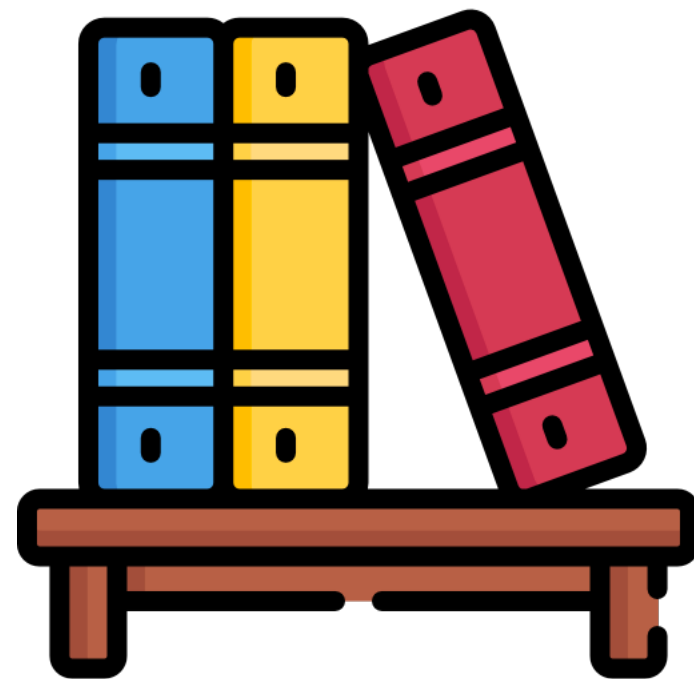
# Font Variation

The following display slips contain the same words, but have a more regular font, which have a more regular formation of 'a' and 'g'. Futura is the name of the font.





low

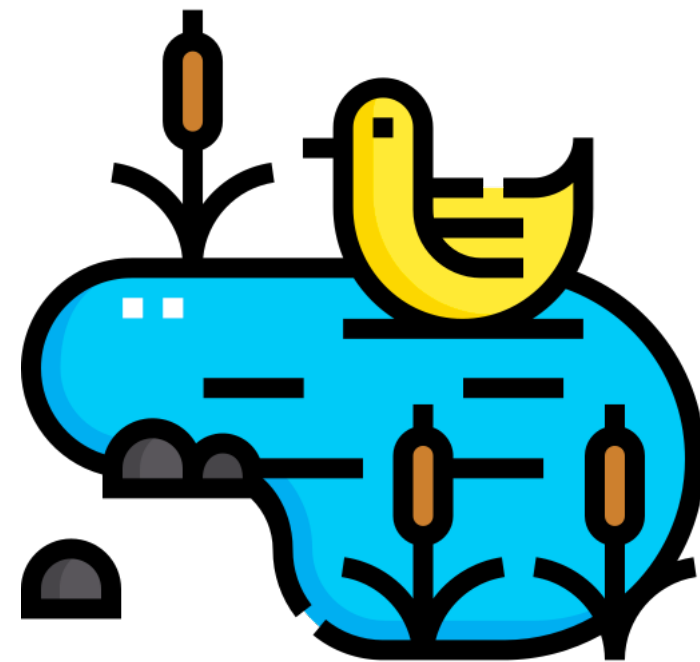


chat





pond



accident





owe

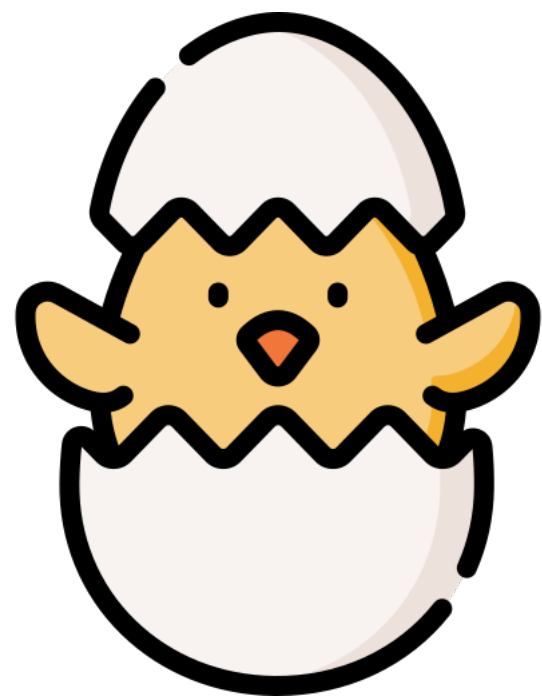
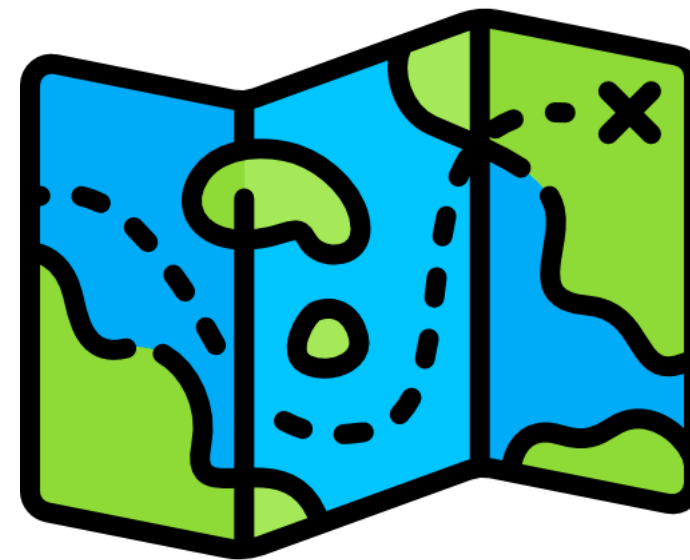


bulge





prowl

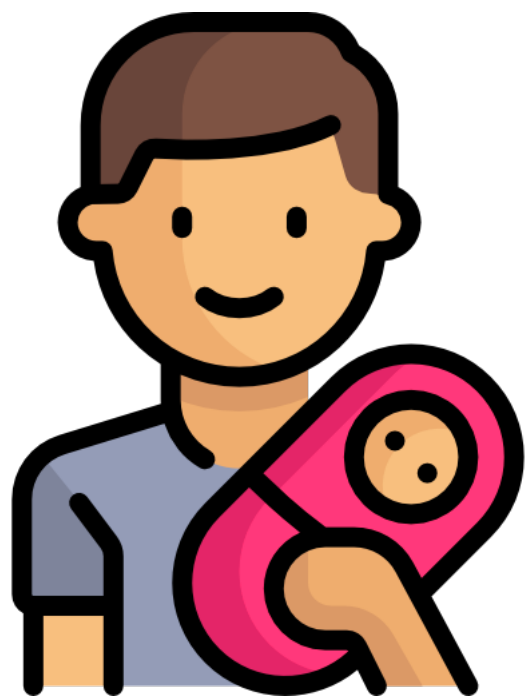
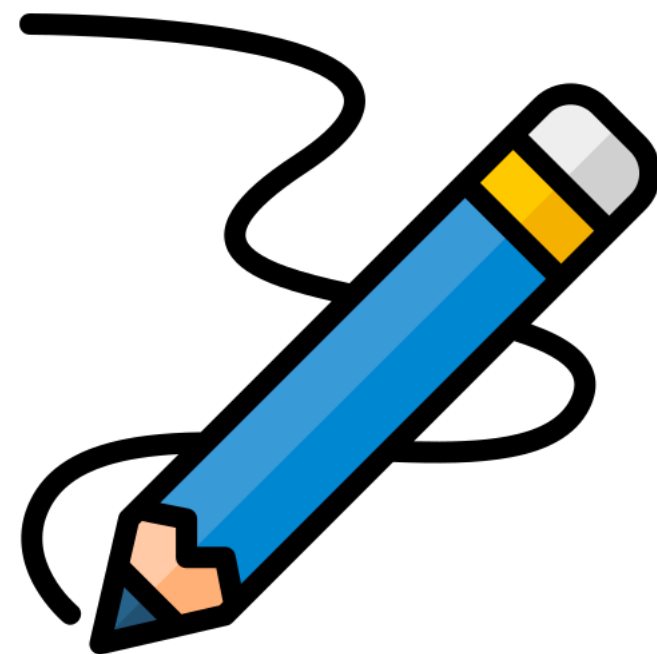


hatch





# favour



# cradle

