

Word of the Day

Autumn Term 2023

Week 2 – 11th September 2023



This Week's Words

Grasshopper

tear
office
spare
chipped
lift

Shinobi

tolerate
mutter
fixation
unveil

VN VOCABULARY

Grasshopper Word of the Day

Word of the Day: picnic
(pic-nic)

Word Class: (verb / noun)

Definition: If you tear paper, cloth, or another material, or if it tears, you pull it into two pieces or you pull it so that a hole appears in it.

Phrases:

Synonym: word
word

Antonym: word
word

Rhyme: word
word

Link Word: word
word

Phrase Number One

Phrase Number Two

The was a hole in Freddie's new school picnic.

Shinobi Word of the Day

Word of the Day: tear
(tear)

Word Class: (verb / noun)

Definition: If you tear paper, cloth, or another material, or if it tears, you pull it into two pieces or you pull it so that a hole appears in it.

Phrases:

Synonym: word
word

Antonym: word
word

Prefix / Suffix: word
word

Link Word: word
word

Phrase Number One

Phrase Number Two

The was a tear in Freddie's new school book.

'Words unlock the doors to a world of understanding...'

This Week's Words

Grasshopper

stick

canopy

ledge

never

kind

Shinobi

drone

adamant

sturdy

mottled

placid



VOCABULARY NINJA

Grasshopper (Tier 1)

stick

canopy

ledge

never

kind



VOCABULARY NINJA

Shinobi (Tier 2)

drone

adamant

sturdy

mottled

placid



VOCABULARY NINJA



Grasshopper Word of the Day

Word of the Day:

Pronunciation / Syllables

stick
(*stick*)

Word Class
(noun / verb)

Definition:

A stick is a thin branch which has fallen off a tree.



Suzanne picked up a large **stick** in the playground.

Synonym:

twig

cane

Antonym:

Prefix / Suffix:

lip-

-ing

Rhyme:

thick

slick

Link Word:

spikey

brown



Grasshopper Word of the Day

Word of the Day:

Pronunciation / Syllables

canopy
(con-o-py)

Word Class
(noun)

Definition:

A canopy is a decorated cover, often made of cloth, which is placed above something such as a bed or a seat.



The class hid under the **canopy** when it started to rain.

Synonym:

awning

shade

Antonym:

Prefix / Suffix:

Rhyme:

Link Word:

large

fabric



Grasshopper Word of the Day

Word of the Day:

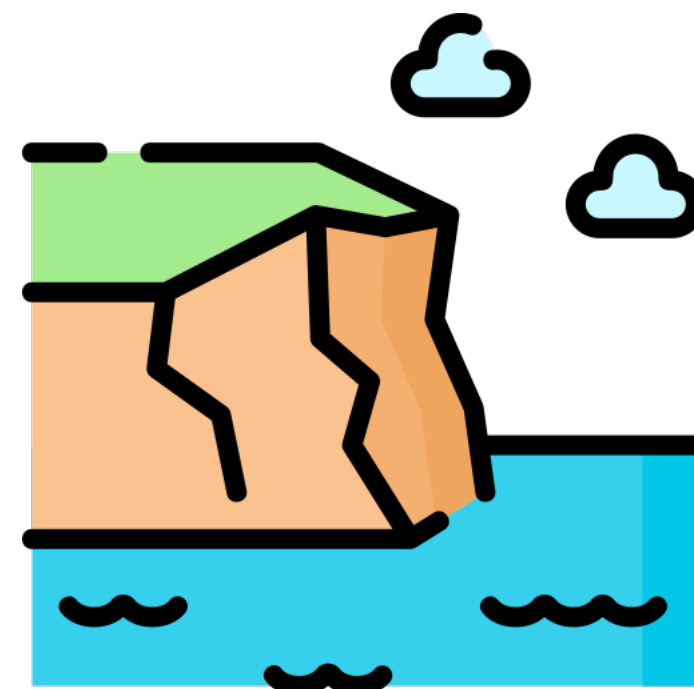
Pronunciation / Syllables

ledge
(ledge)

Word Class
(noun)

Definition:

A ledge is a piece of rock on the side of a cliff or mountain, which is in the shape of a narrow shelf.



The class were told to come away from the **ledge** of the cliff.

Synonym:

shelf

mantel

Antonym:

Prefix / Suffix:

Rhyme:

edge

pledge

Link Word:

sat

high



Grasshopper Word of the Day

Word of the Day:

Pronunciation / Syllables

never
(nev-er)

Word Class
(adverb)

Definition:

Never means 'not in any circumstances at all'.



Amit was **never** disruptive in class.

Synonym:

at no time

no way

Antonym:

always

forever

Prefix / Suffix:

when-

-more

Rhyme:

clever

Link Word:

again

mistake



Grasshopper Word of the Day

Word of the Day:

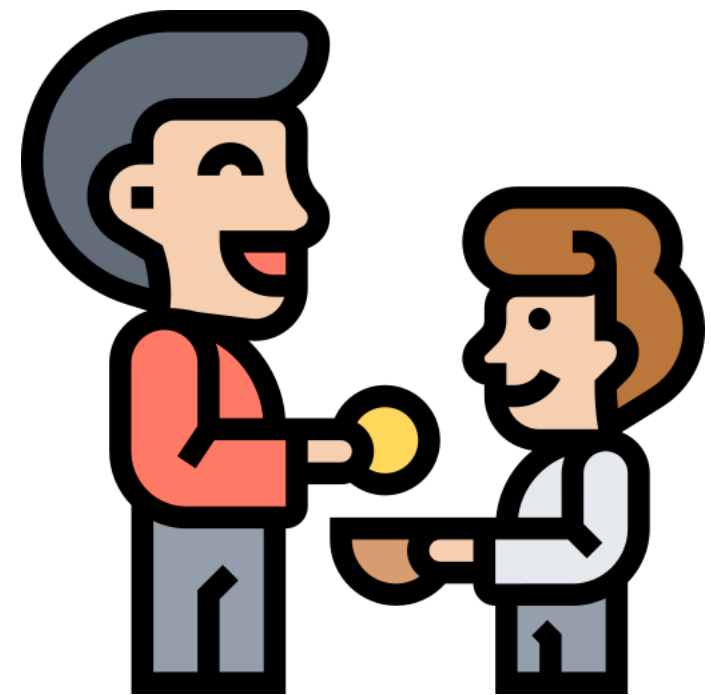
Pronunciation / Syllables

kind
(kind)

Word Class
(adjective)

Definition:

Someone who is kind behaves in a gentle, caring, and helpful way towards other people.



Mr Jevons told Sonny he was **kind** for sharing his sweets.

Synonym:

caring

tender

Antonym:

mean

cruel

Prefix / Suffix:

-ness

un-

Rhyme:

find

mind

Link Word:

person

friend



Shinobi Word of the Day

Word of the Day:

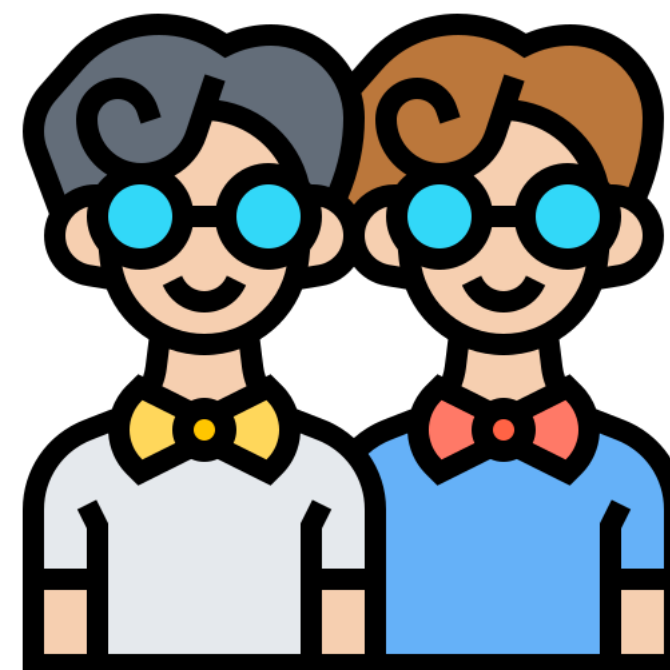
Pronunciation / Syllables

drone
(*drone*)

Word Class
(noun)

Definition:

People who do not contribute anything to society or to an organisation are sometimes described as drones.



Jemma was called a **drone** by Durga for copying Jack.

Synonym:

parasite

Antonym:

Prefix / Suffix:

a-

-ness

Rhyme:

own

zone

Link Word:

boring

mindless



Shinobi Word of the Day

Word of the Day:

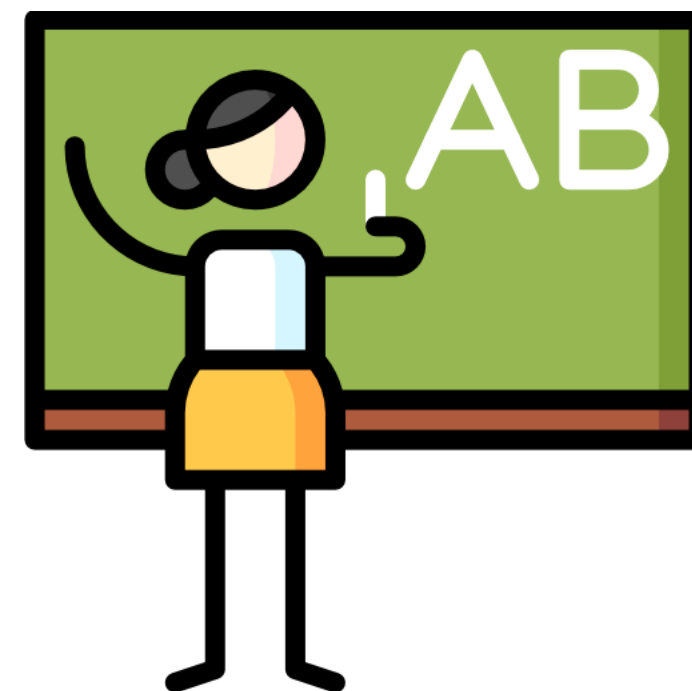
adamant
(*ad-a-mant*)

Word Class
(noun)

Pronunciation / Syllables

Definition:

If someone is adamant about something, they are determined not to change their mind about it.



Katy was **adamant** that she got the spelling correct.

Synonym:

firm

rigid

Antonym:

unsure

Prefix / Suffix:

Rhyme:

Link Word:

strongly

consistently



Shinobi Word of the Day

Word of the Day:

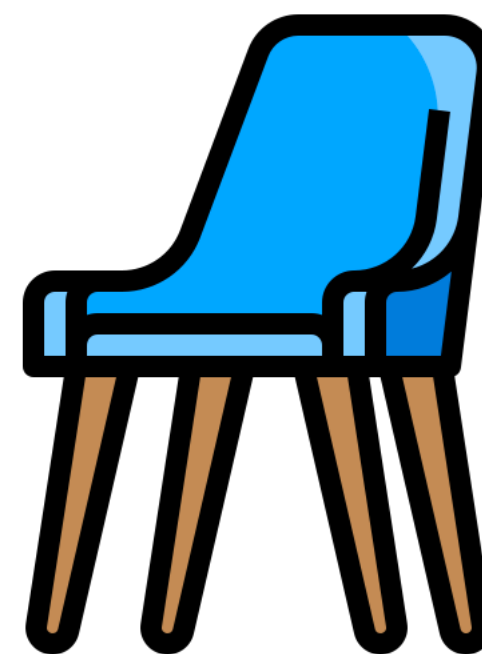
Pronunciation / Syllables

sturdy
(stur-dy)

Word Class
(adjective)

Definition:

Someone or something that is sturdy looks strong and is unlikely to be easily injured or damaged.



The class chairs were **sturdy**.

Synonym:

powerful

robust

Antonym:

puny

frail

Prefix / Suffix:

Rhyme:

thirty

Link Word:

person

very



Shinobi Word of the Day

Word of the Day:

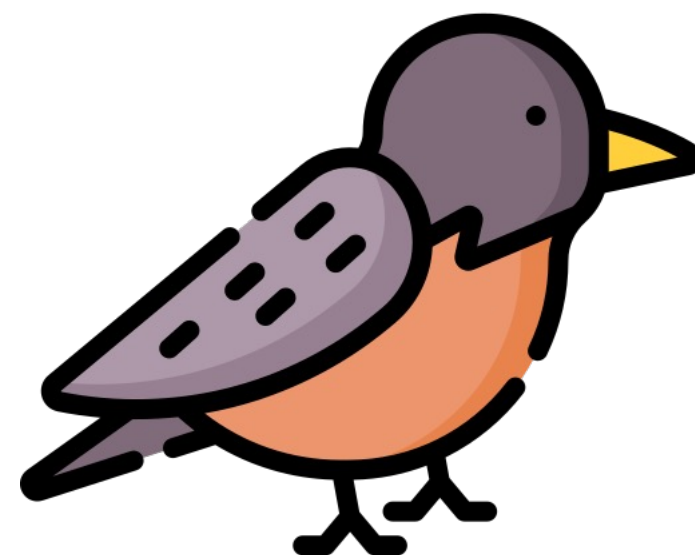
mottled
(*mot-tled*)

Word Class
(adjective)

Pronunciation / Syllables

Definition:

Something that is mottled is covered with patches of different colours which do not form a regular pattern.



The bird outside the class window had **mottled** plumage.

Synonym:

blotchy

spotted

Antonym:

Prefix / Suffix:

-led

Rhyme:

throttled

Link Word:

brown

skin



Shinobi Word of the Day

Word of the Day:

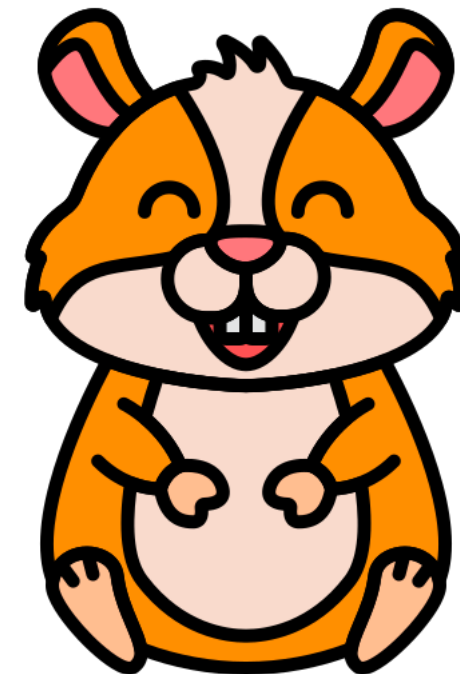
Pronunciation / Syllables

placid
(*plac-id*)

Word Class
(adjective)

Definition:

A placid person or animal is calm and does not easily become excited, angry, or upset.



The class hamster was very placid.

Synonym:

calm

mild

Antonym:

excitable

temperamental

Prefix / Suffix

-ly

Rhyme:

Link Word:

dog

child

Vocabulary Laboratory



Describe / Definition:

Use it in a sentence:

Focus Word (write below):

Word Class:

Synonyms:

(words with same / similar meaning)

Antonyms:

(words with opposite meaning)

Draw your sentence:

Rhymes:

(words that sound the same)

Link Words:

(Example: football = pitch, team, player)

Vocabulary Visualiser

Draw the
Grasshopper words
and bring them to life.



Word: stick

Word: ledge

Word: canopy

Word: kind



Vocabulary Visualiser

Draw the **Shinobi**
words and bring
them to life.



Word: drone

Word: mottled

Word: sturdy

Word: placid



Matching Meanings

Draw lines from the **Grasshopper** words to their definitions.



Grasshopper Word

Grasshopper Definitions

stick

A *** is a piece of rock on the side of a cliff or mountain, which is in the shape of a narrow shelf.



canopy

A *** is a thin branch which has fallen off a tree.



ledge

*** means 'not in any circumstances at all'.



never

Someone who is *** behaves in a gentle, caring, and helpful way towards other people.



kind

A *** is a decorated cover, often made of cloth, which is placed above something such as a bed or a seat.



Matching Meanings

Draw lines from the **Shinobi** words to their definitions.



Shinobi Word

Shinobi Definitions

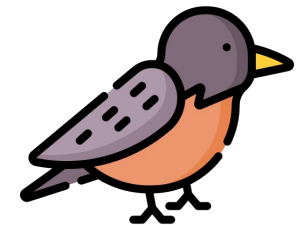
drone

Someone or something that is *** looks strong and is unlikely to be easily injured or damaged.



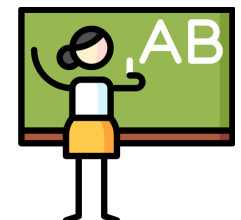
adamant

Something that is *** is covered with patches of different colours which do not form a regular pattern.



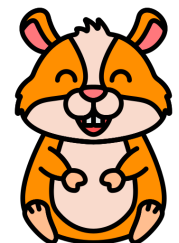
sturdy

If someone is *** about something, they are determined not to change their mind about it.



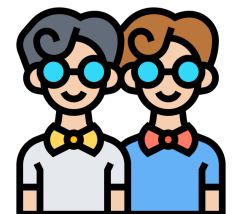
mottled

A *** person or animal is calm and does not easily become excited, angry, or upset.



placid

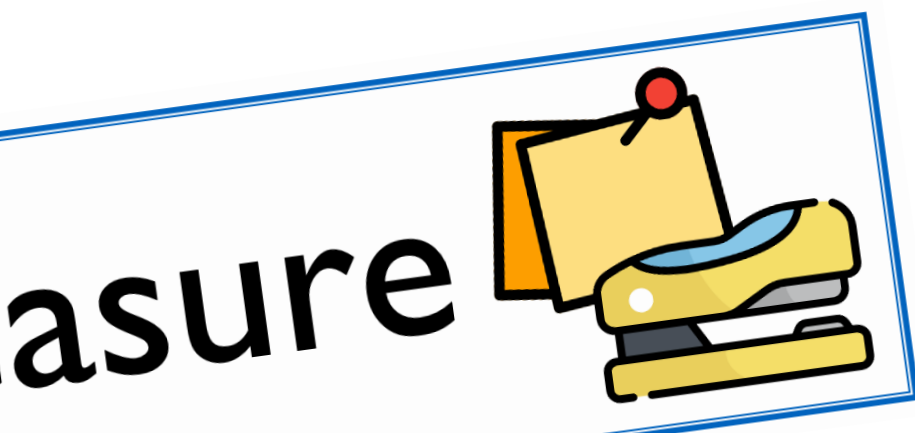
People who do not contribute anything to society or to an organisation are sometimes described as ***.





Display Slips

The following slides are for classroom display. As you teach each Word of the Day, words can be displayed in the classroom to enable pupils to use the taught vocabulary in an independent manner.





stick



canopy





ledge

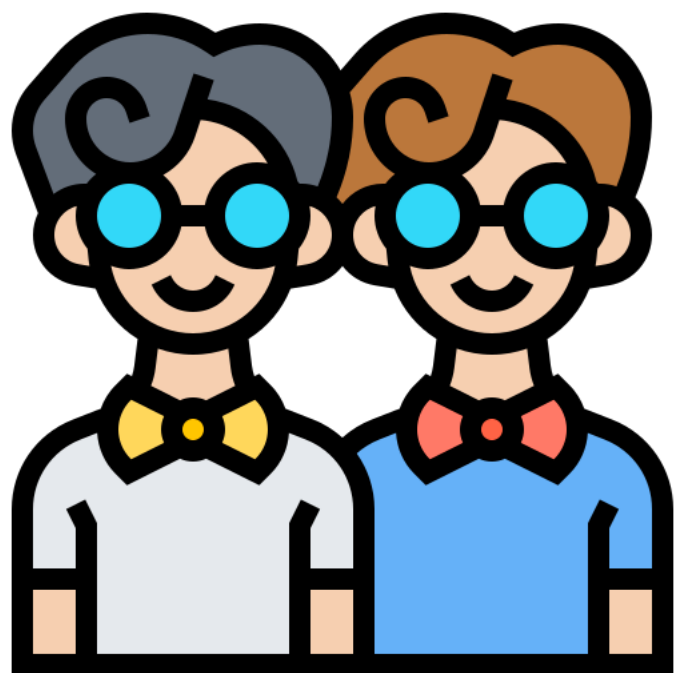
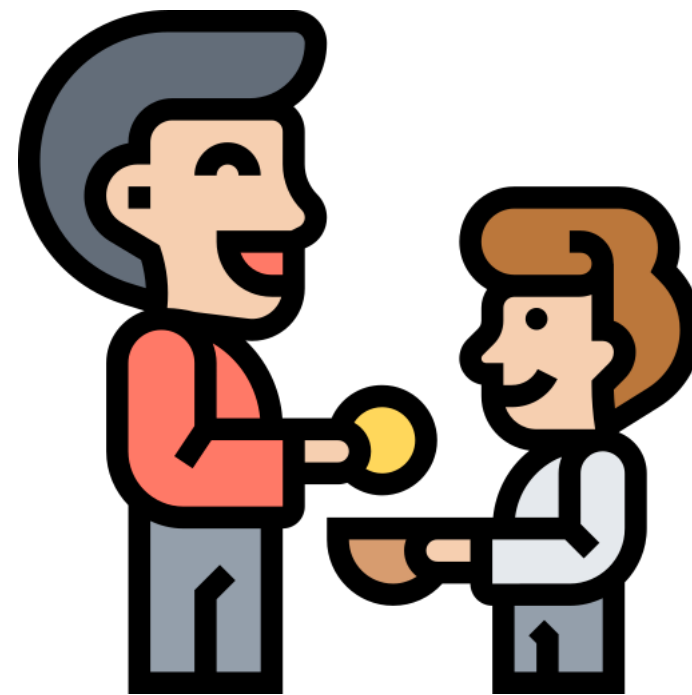


never





Kind

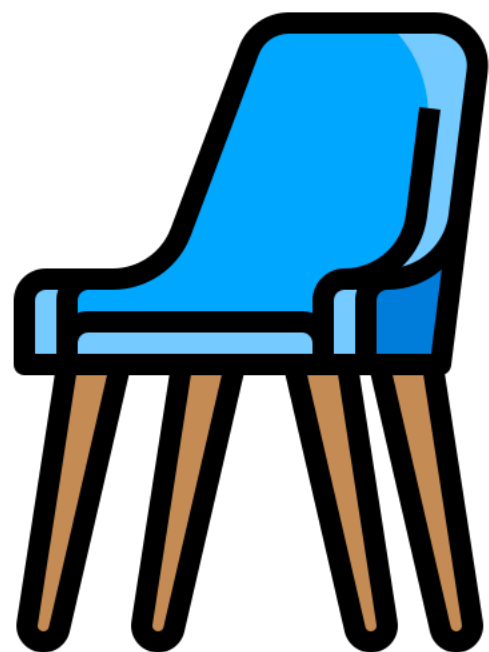
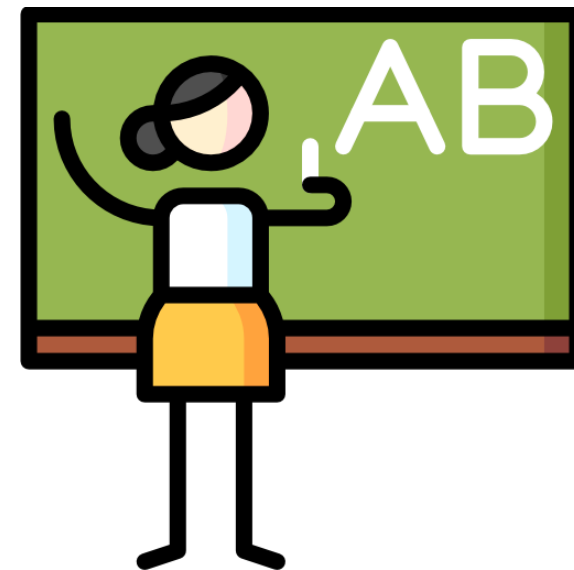


drone





adamant

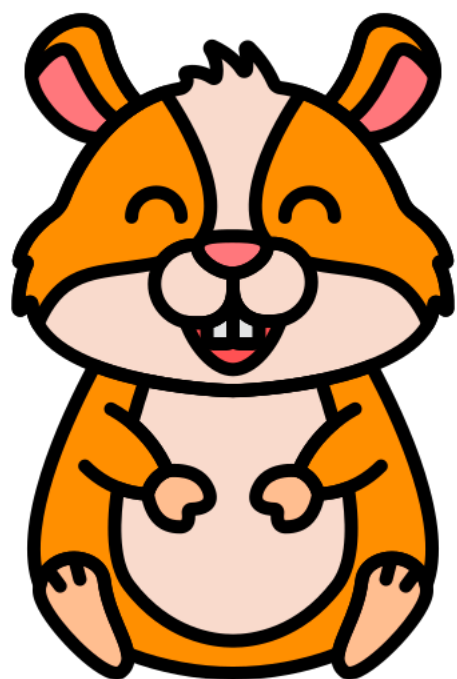
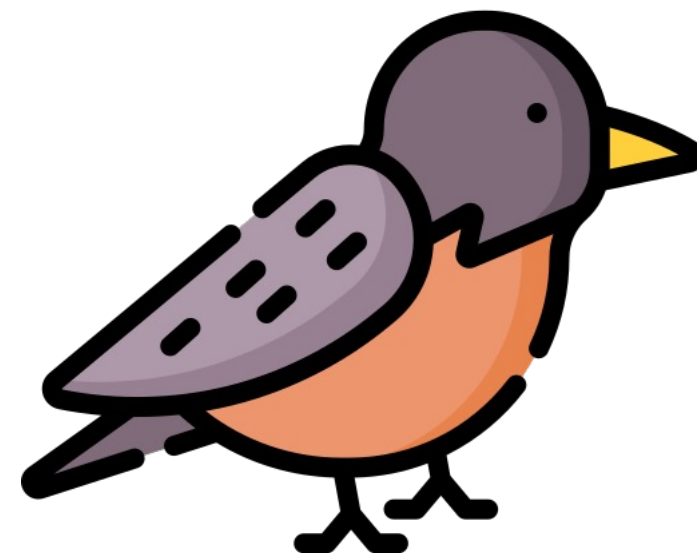


sturdy





mottled



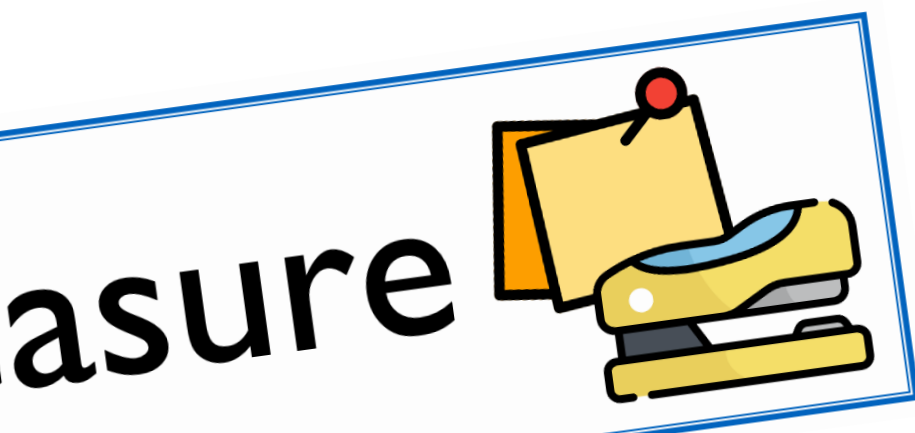
placid





Font Variation

The following display slips contain the same words, but have a more regular font, which have a more regular formation of 'a' and 'g'. Futura is the name of the font.





stick



canopy





ledge

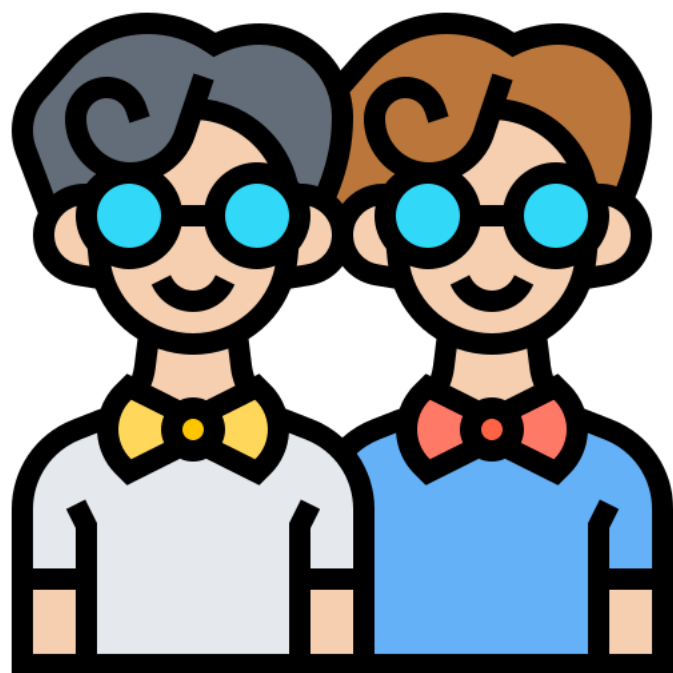
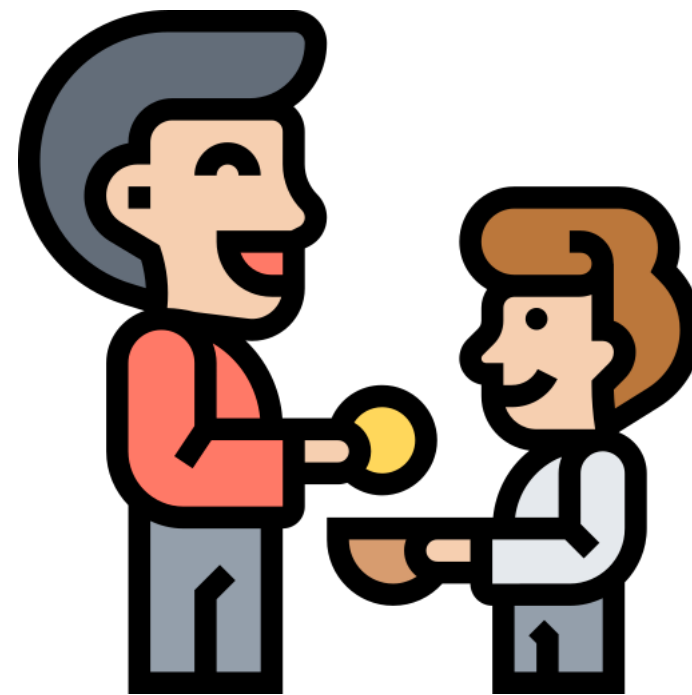


never





kind

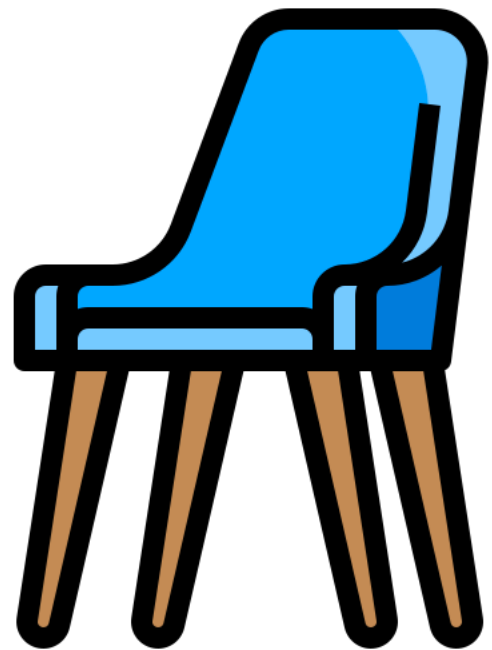
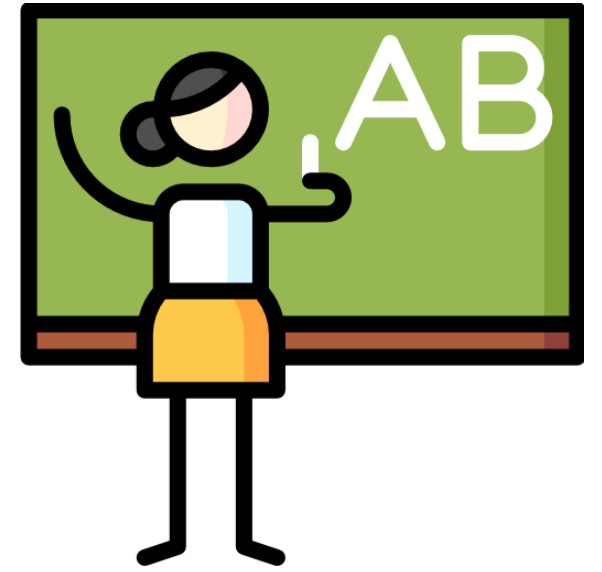


drone





adamant

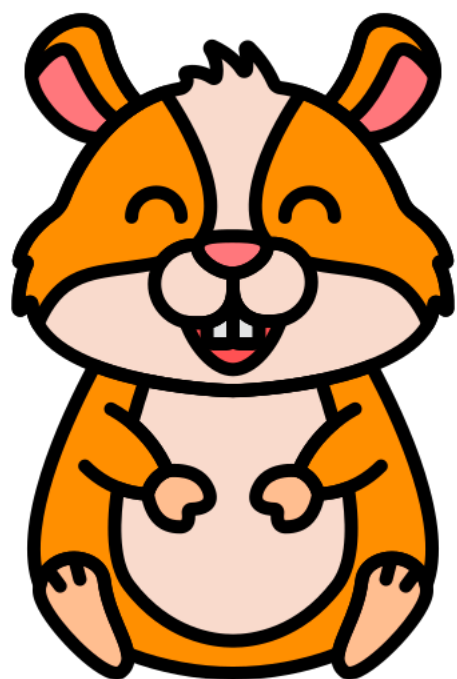
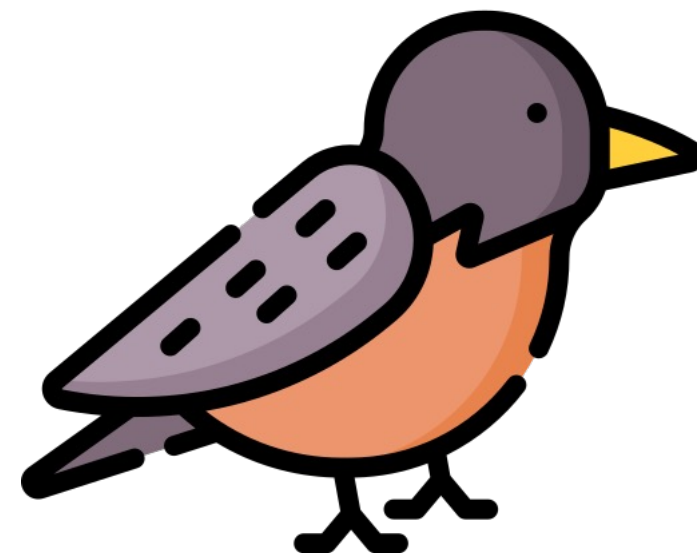


sturdy





mottled



placid

