

Word of the Day

Autumn Term 2023

Week 3 – 18th September 2023



This Week's Words

Grasshopper

- tear
- office
- spare
- chipped
- lift

Shinobi

- tolerate
- mutter
- fixation
- unveil

Grasshopper Word of the Day

Word of the Day: picnic
Pronunciation / Syllables: (pic-nic)
Word Class: (verb / noun)

Definition: If you tear paper, cloth, or another material, or if it tears, you pull it into two pieces or you pull it so that a hole appears in it.

Phrases:

- Phrase Number One: The was a hole in Freddie's new school picnic.
- Phrase Number Two: Link Word: word

Shinobi Word of the Day

Word of the Day: tear
Pronunciation / Syllables: (tear)
Word Class: (verb / noun)

Definition: If you tear paper, cloth, or another material, or if it tears, you pull it into two pieces or you pull it so that a hole appears in it.

Phrases:

- Phrase Number One: The was a tear in Freddie's new school book.
- Phrase Number Two: Link Word: word

'Words unlock the doors to a world of understanding...'

This Week's Words

Grasshopper

load

dim

know

coat

blind

Shinobi

conserve

pelt

coat

submerge

progress



VOCABULARY NINJA

Grasshopper (Tier I)

load

dim

know

coat

blind



VOCABULARY NINJA

Shinobi (Tier 2)

conserve

pelt

coat

submerge

progress



VOCABULARY NINJA



Grasshopper Word of the Day

Word of the Day:

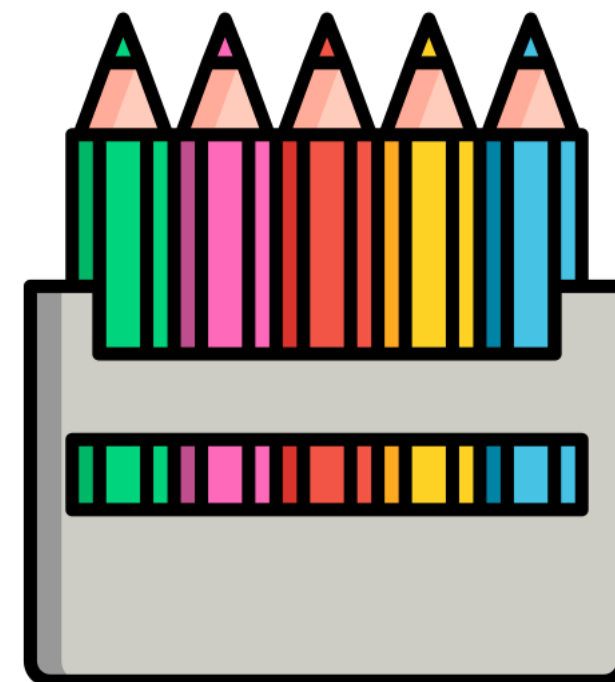
Pronunciation / Syllables

load
(load)

Word Class
(verb / noun)

Definition:

If you load a vehicle or a container,
you put a large quantity of things into
it.



Abdur **loaded** the pencils into the class pencil holder.

Synonym:

fill

pack

Antonym:

upload

Prefix / Suffix:

over-

-ed

Rhyme:

road

code

Link Word:

heavy

deposited



Grasshopper Word of the Day

Word of the Day:

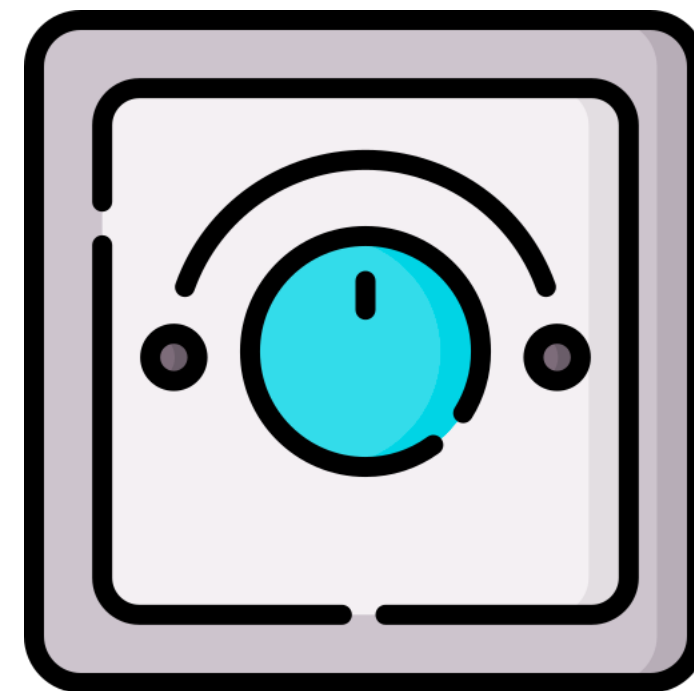
Pronunciation / Syllables

dim
(*dim*)

Word Class
(adjective / verb)

Definition:

A dim place is rather dark because there is not much light in it.



Mrs Mckee turned the lights down to make the classroom **dim**.

Synonym:

soft

dingy

Antonym:

bright

clear

Prefix / Suffix:

-inished

-ly

Rhyme:

him

limb

Link Word:

light

room



Grasshopper Word of the Day

Word of the Day:

Pronunciation / Syllables

know
(know)

Word Class
(verb)

Definition:

If you know a fact,
a piece of information, or
an answer, you have it correctly in
your mind.



Iris **knew** the answer to the difficult maths question.

Synonym:

notice

sense

Antonym:

Prefix / Suffix:

-n

Rhyme:

so

low

Link Word:

name

don't



Grasshopper Word of the Day

Word of the Day:

Pronunciation / Syllables

coat
(coat)

Word Class
(noun)

Definition:

A coat is a piece of clothing with long sleeves which you wear over your other clothes when you go outside.



Ismael loved his new school coat.

Synonym:

jacket

parka

Antonym:

Prefix / Suffix:

over-

-ed

Rhyme:

note

wrote

Link Word:

warm

fancy



Grasshopper Word of the Day

Word of the Day:

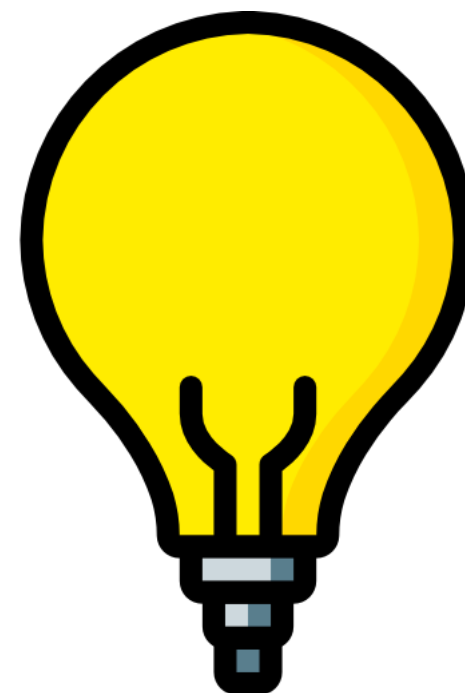
Pronunciation / Syllables

blind
(blind)

Word Class
(verb/adjective)

Definition:

If something blinds you, it makes you unable to see, either for a short time or permanently.



When the lights went on in the classroom, they **blinded** Pippa.

Synonym:

visually impaired
sightless

Antonym:

sighted

Prefix / Suffix:

colour-
-ness

Rhyme:

find
mind

Link Word:

tears
torch



Shinobi Word of the Day

Word Class
(verb)

Word of the Day: **conserve**

Pronunciation / Syllables

(con-serve)

Definition:

If you conserve a supply of something, you use it carefully so that it lasts for a long time.



Frank wanted to **conserve** his energy before the school race.

Synonym:

protect

maintain

Antonym:

squander

waste

Prefix / Suffix:

-ed

-ing

Rhyme:

deserve

curve

Link Word:

food

rest



Shinobi Word of the Day

Word of the Day:

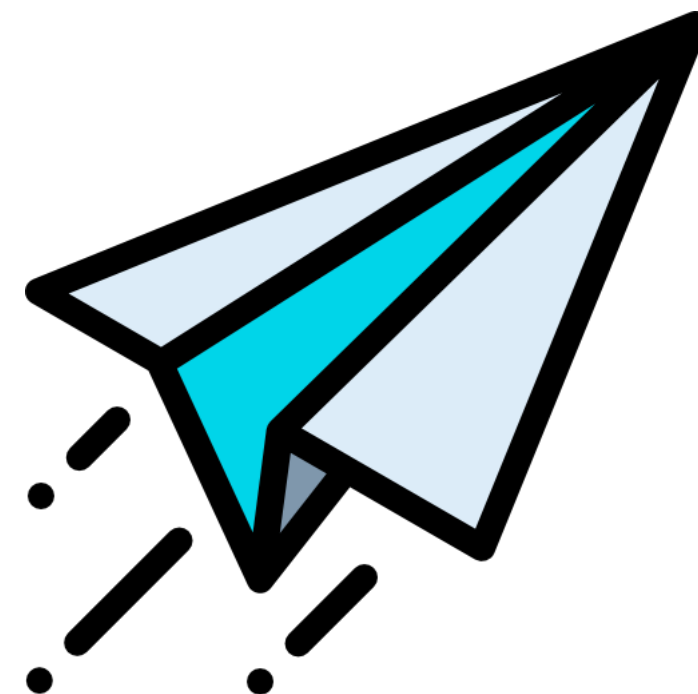
Pronunciation / Syllables

pelt
(pelt)

Word Class
(verb)

Definition:

If you pelt someone with things, you throw things at them.



Lexi **pelted** the classroom with paper aeroplanes.

Synonym:

attack

blitz

Antonym:

Prefix / Suffix:

s-

miss-

Rhyme:

felt

belt

Link Word:

snowball

down



Shinobi Word of the Day

Word Class
(verb)

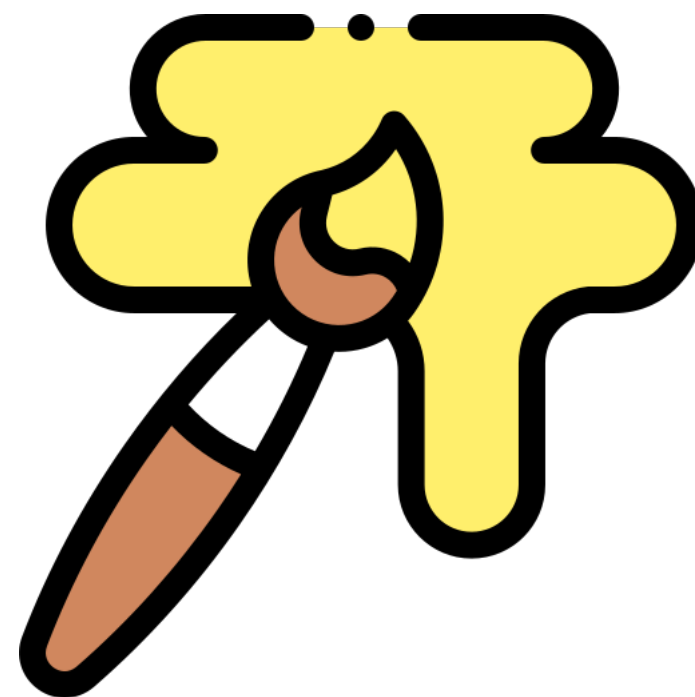
Word of the Day:

coat
(coat)

Pronunciation / Syllables

Definition:

If you coat something with a substance or in a substance, you cover it with a thin layer of the substance.



The class table was **coated** in paint after the art lesson.

Synonym:

cover

overlay

Antonym:

Prefix / Suffix:

top-

-ed

Rhyme:

throat

moat

Link Word:

gloss

flour



Shinobi Word of the Day

Word of the Day: **submerge**

Word Class
(verb)

Pronunciation / Syllables

(sub-merge)

Definition:

If something submerges or if you submerge it, it goes below the surface of some water or another liquid.



Verity **submerged** her water bottle in the sink.

Synonym:

flood

engulf

Antonym:

Prefix / Suffix:

sub-

-ment

Rhyme:

surge

converge

Link Word:

river

fully



Shinobi Word of the Day

Word Class
(noun)

Word of the Day:

progress
(prog-ress)

Pronunciation / Syllables

Definition:

Progress is the process of gradually improving or getting nearer to achieving or completing something.



Awais made great **progress** in literacy.

Synonym:

develop

advance

Antonym:

regress

deteriorate

Prefix / Suffix

-ion

-ive

Rhyme:

Link Word:

towards

quickly

Vocabulary Laboratory



Describe / Definition:

Use it in a sentence:

Focus Word (write below):

Word Class:

Synonyms:

(words with same / similar meaning)

Antonyms:

(words with opposite meaning)

Draw your sentence:

Rhymes:

(words that sound the same)

Link Words:

(Example: football = pitch, team, player)

Vocabulary Visualiser

Draw the
Grasshopper words
and bring them to life.



Word: load

Word: coat

Word: coat

Word: blind



Vocabulary Visualiser

Draw the **Shinobi**
words and bring
them to life.



Word: conserve

Word: coat

Word: pelt

Word: submerge



Matching Meanings

Draw lines from the
Grasshopper words
to their definitions.

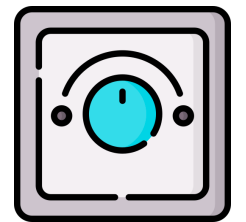


Grasshopper Word

Grasshopper Definitions

load

A *** place is rather dark because there is not much light in it.



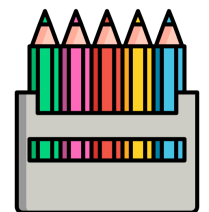
dim

If you *** a fact, a piece of information, or an answer, you have it correctly in your mind.



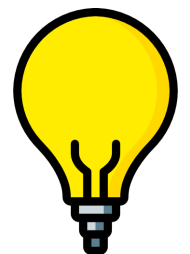
know

If you *** a vehicle or a container, you put a large quantity of things into it.



coat

If something *** you, it makes you unable to see, either for a short time or permanently.



blind

A *** is a piece of clothing with long sleeves which you wear over your other clothes when you go outside.



Matching Meanings

Draw lines from the **Shinobi** words to their definitions.



Shinobi Word

Shinobi Definitions

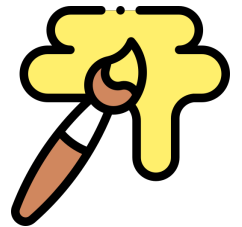
conserve

If you *** a supply of something, you use it carefully so that it lasts for a long time.



pelt

If you *** something with a substance or in a substance, you cover it with a thin layer of the substance.



coat

If something *** or if you *** it, it goes below the surface of some water or another liquid.



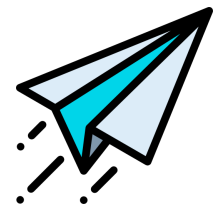
submerge

*** is the process of gradually improving or getting nearer to achieving or completing something.



progress

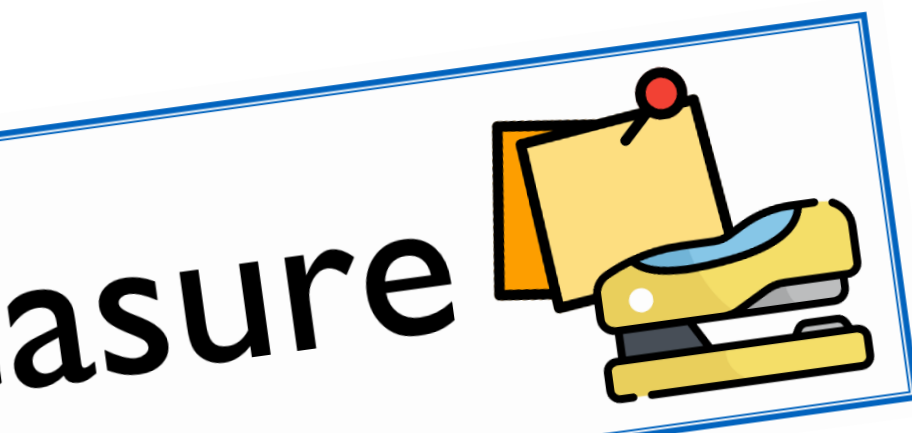
If you *** someone with things, you throw things at them.





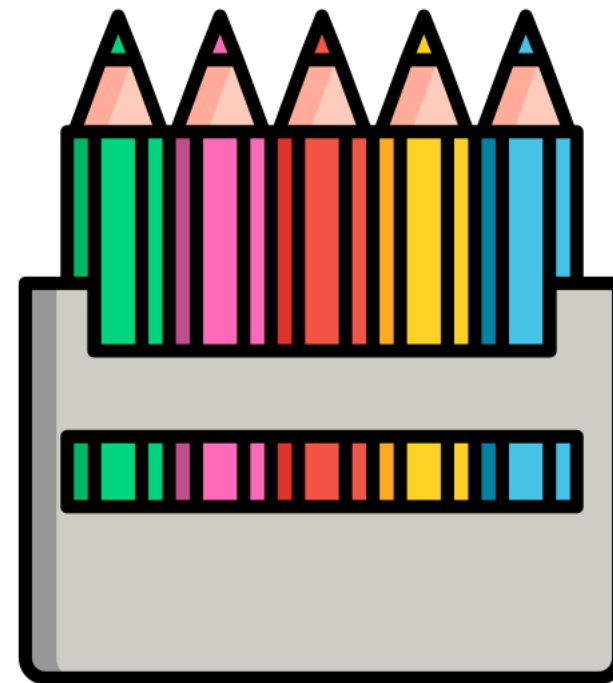
Display Slips

The following slides are for classroom display. As you teach each Word of the Day, words can be displayed in the classroom to enable pupils to use the taught vocabulary in an independent manner.





load



dim





know

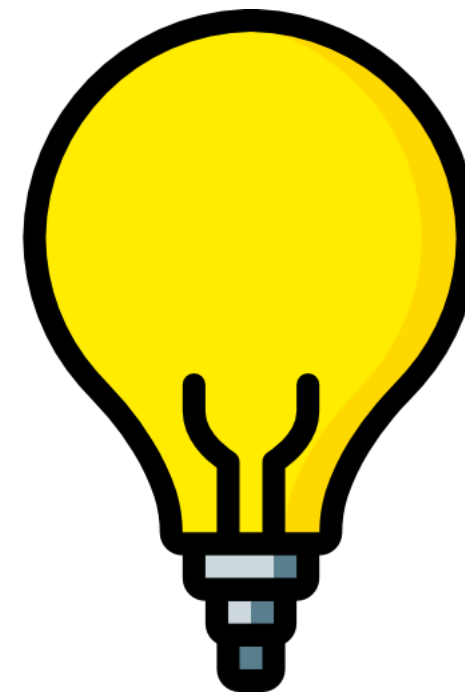


coat





blind

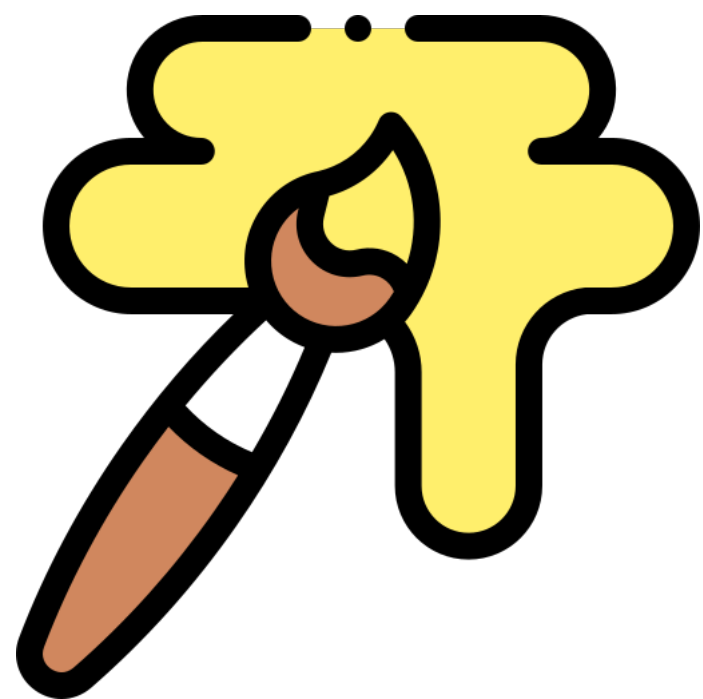
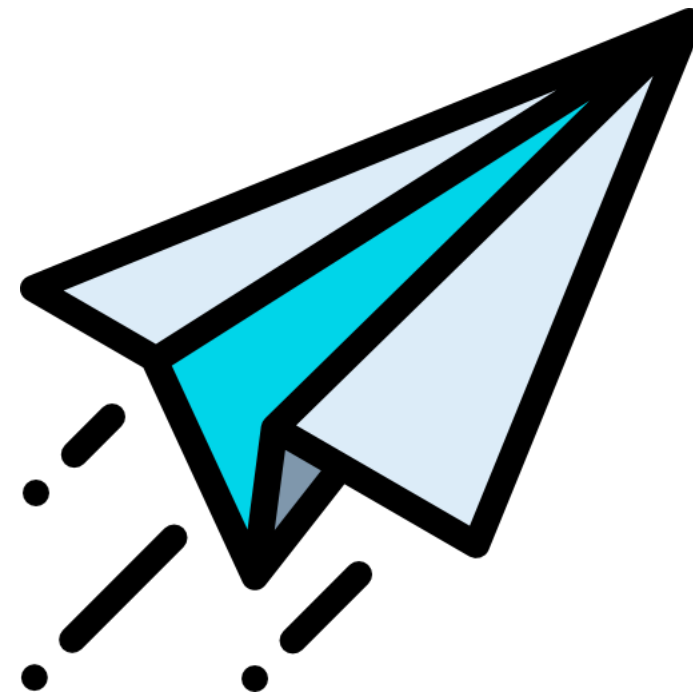


conserve





pelt



coat





submerge



progress





Font Variation

The following display slips contain the same words, but have a more regular font, which have a more regular formation of 'a' and 'g'. Futura is the name of the font.



worried



opini



asure

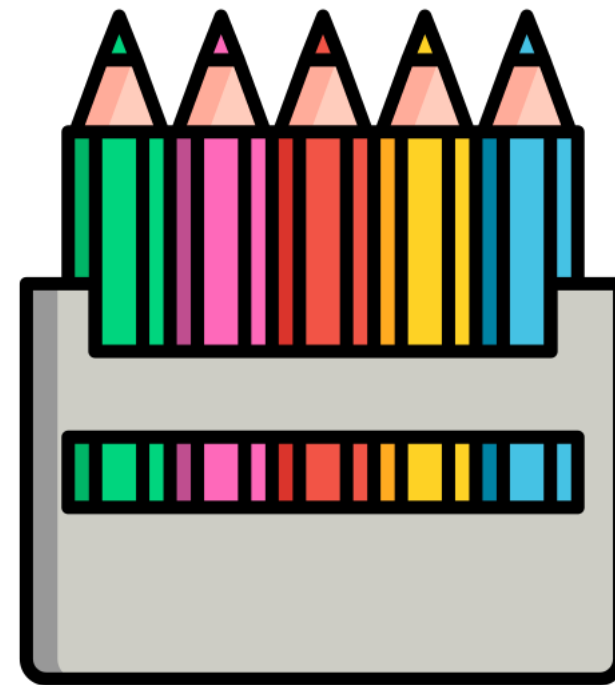


dia





load



dim





know

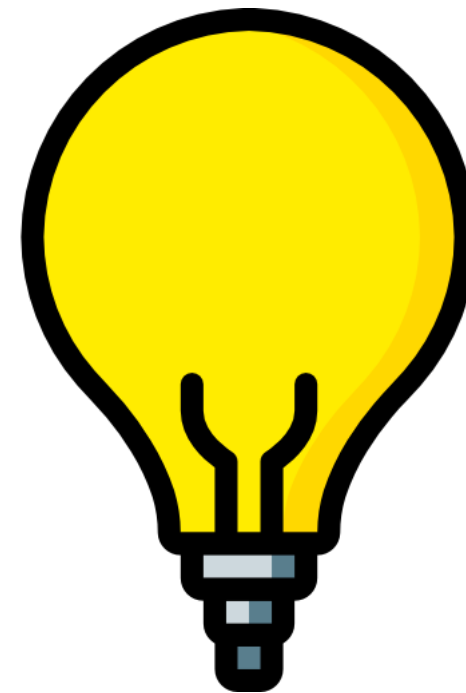


coat





blind

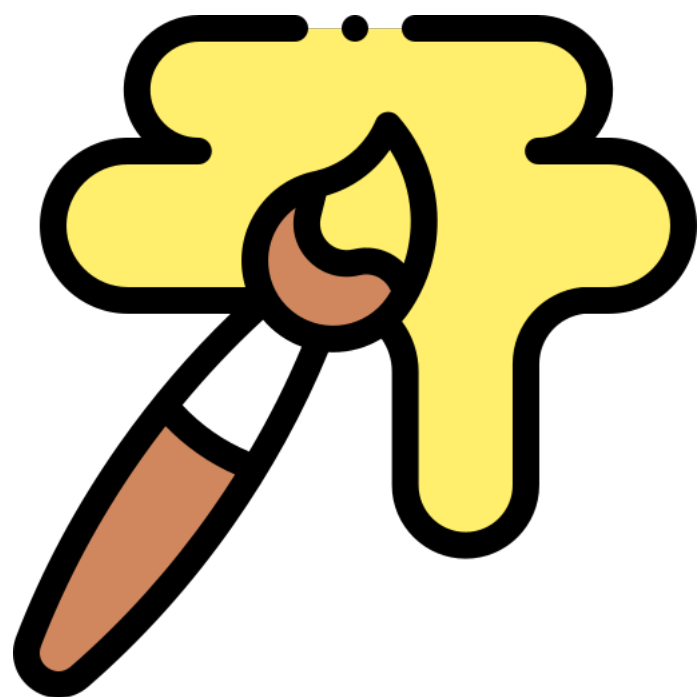
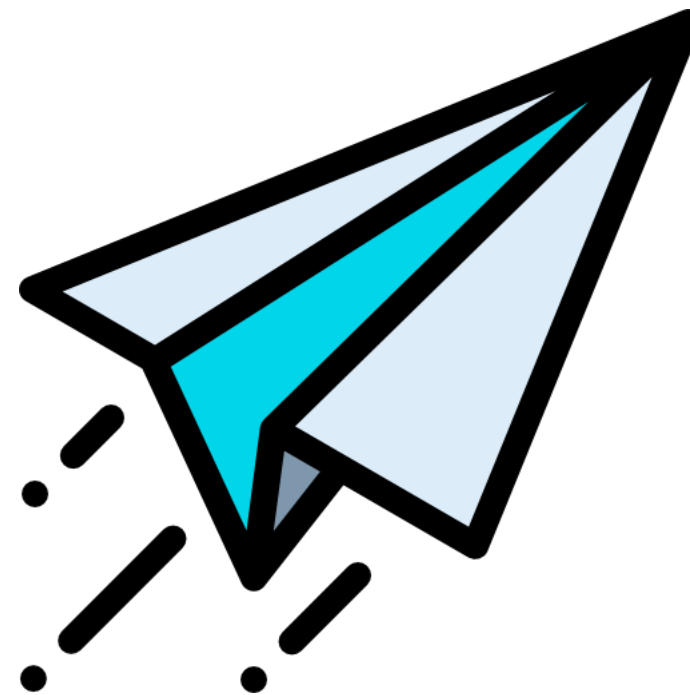


conserve





pelt



coat





submerge



progress

