

Word of the Day

Autumn Term 2023

Week 4 – 25th September 2023



This Week's Words

Grasshopper

tear
office
spare
chipped
lift

Shinobi

tolerate
mutter
fixation
unveil

VN VOCABULARY

Grasshopper Word of the Day

Word of the Day: picnic
(pic-nic)

Word Class: (verb / noun)

Definition: If you tear paper, cloth, or another material, or if it tears, you pull it into two pieces or you pull it so that a hole appears in it.

Phrases:

Synonym: word
word

Antonym: word
word

Rhyme: word
word

Link Word: word
word

Phrase Number One: The was a hole in Freddie's new school picnic.

Phrase Number Two:

Shinobi Word of the Day

Word of the Day: tear
(tear)

Word Class: (verb / noun)

Definition: If you tear paper, cloth, or another material, or if it tears, you pull it into two pieces or you pull it so that a hole appears in it.

Phrases:

Synonym: word
word

Antonym: word
word

Prefix / Suffix: word
word

Link Word: word
word

Phrase Number One: The was a tear in Freddie's new school book.

Phrase Number Two:

'Words unlock the doors to a world of understanding...'

This Week's Words

Grasshopper

glove

branch

within

trap

Autumn

Shinobi

weave

motionless

irregular

artificial

rooted



VOCABULARY NINJA

Grasshopper (Tier 1)

glove

branch

within

trap

Autumn



VOCABULARY NINJA

Shinobi (Tier 2)

weave

motionless

irregular

artificial

rooted



VOCABULARY NINJA



Grasshopper Word of the Day

Word of the Day:

Pronunciation / Syllables

glove
(glove)

Word Class
(noun)

Definition:

Gloves are pieces of clothing which cover your hands and wrists and have individual sections for each finger.



Finton wore his new **gloves** to school.

Synonym:

mitten

Antonym:

Prefix / Suffix:

fox-

-less

Rhyme:

love

dove

Link Word:

fitted

warm



Grasshopper Word of the Day

Word of the Day:

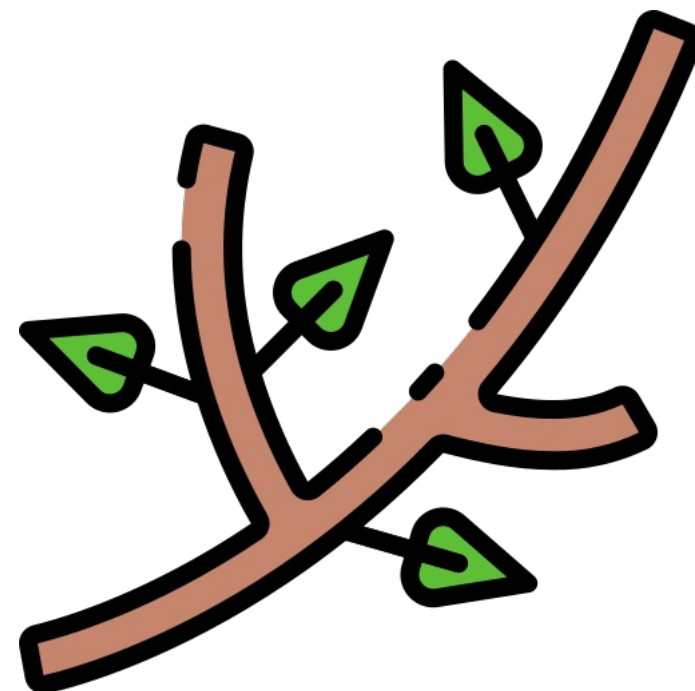
Pronunciation / Syllables

branch
(branch)

Word Class
(noun)

Definition:

The branches of a tree are the parts that grow out from its trunk and have leaves, flowers, or fruit growing on them.



The **branch** kept tapping on the classroom window in the wind.

Synonym:

bough

limb

Antonym:

Prefix / Suffix:

-es

-ing

Rhyme:

ranch

blanch

Link Word:

spiked

brown



Grasshopper Word of the Day

Word of the Day:

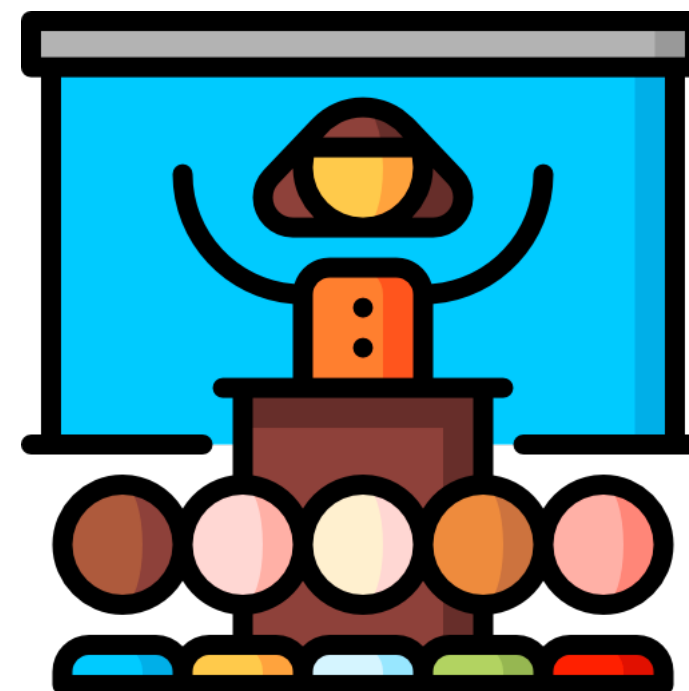
Pronunciation / Syllables

within
(*with-in*)

Word Class
(preposition)

Definition:

If something is within a place, area, or object, it is inside it or surrounded by it.



Within the classroom, the students eagerly gathered around Mrs Crosby to listen to a captivating story.

Synonym:

inside

Antonym:

outside

Prefix / Suffix:

Rhyme:

begin

skin

Link Word:

the

sight



Grasshopper Word of the Day

Word of the Day:

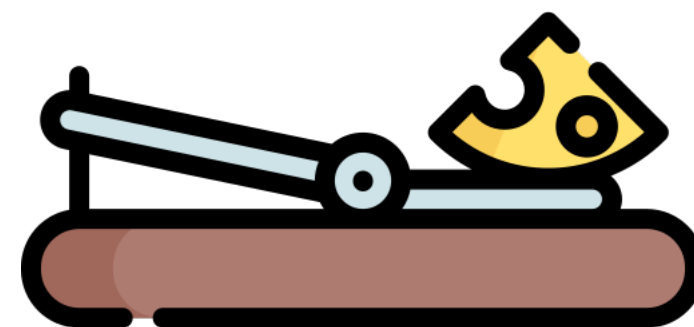
Pronunciation / Syllables

trap
(trap)

Word Class
(noun/verb)

Definition:

A trap is a device which is placed somewhere or a hole which is dug somewhere in order to catch animals or birds.



Mr Foley placed a cleverly disguised **trap** near the classroom's bookshelf for the mouse.

Synonym:

trick

ploy

Antonym:

Prefix / Suffix:

s-

-ped

Rhyme:

gap

cap

Link Word:

dangerous

sensed



Grasshopper Word of the Day

Word of the Day:

Autumn
(Au-tumn)

Word Class
(noun)

Pronunciation / Syllables

Definition:

Autumn is the season between summer and winter when the weather becomes cooler and the leaves fall off the trees.



The leaves fell from the trees in the playground as it was **Autumn**.

Synonym:

fall

Antonym:

Prefix / Suffix:

mid-

-al

Rhyme:

Link Word:

leaves

cool



Shinobi Word of the Day

Word Class
(verb)

Word of the Day:

weave
(weave)

Pronunciation / Syllables

Definition:

If you weave your way somewhere, you move between and around things as you go there.



Farrah **wove** in and out of the other students to get to the front of the class.

Synonym:

ripple

flutter

Antonym:

Prefix / Suffix:

micro-

-length

Rhyme:

gave

cave

Link Word:

in

out



Shinobi Word of the Day

Word of the Day: **motionless**

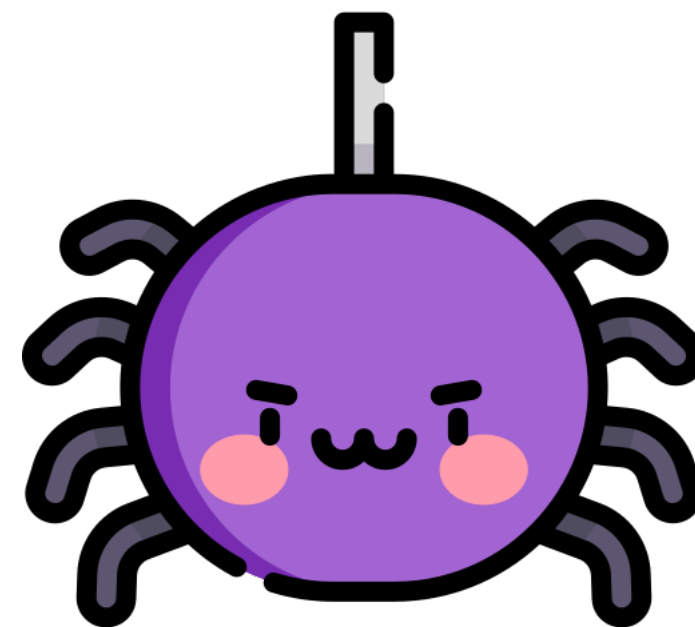
Word Class
(adjective)

Pronunciation / Syllables

(*mo-tion-less*)

Definition:

Someone or something that is motionless is not moving at all.



Farrah was **motionless** when he saw a spider in the classroom.

Synonym:

unmoving

still

Antonym:

moving

mobile

Prefix / Suffix:

e-

-ly

Rhyme:

emotionless

Link Word:

stood

were



Shinobi Word of the Day

Word of the Day:

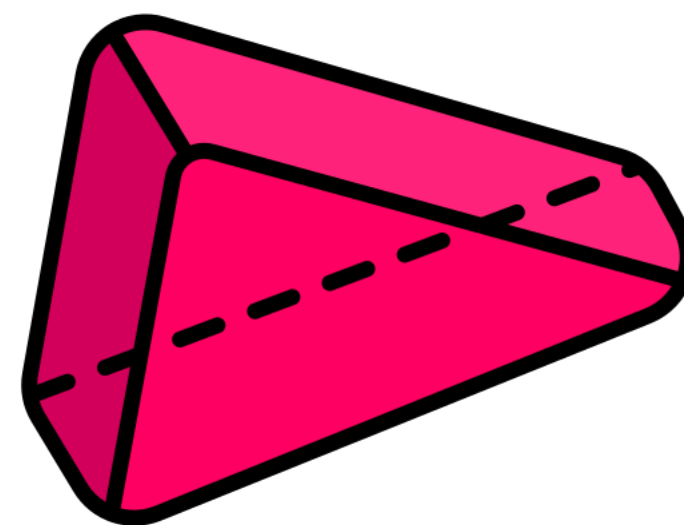
irregular
(i-reg-u-lar)

Word Class
(verb)

Pronunciation / Syllables

Definition:

If events or actions occur at irregular intervals, the periods of time between them are of different lengths.



Mrs Bass introduced the concept of **irregular** shapes by showing the students a polygon.

Synonym:

asymmetrical

crooked

Antonym:

regular

straight

Prefix / Suffix:

-ities

-ity

Rhyme:

Link Word:

intervals

worked



Shinobi Word of the Day

Word of the Day:

artificial
(*ar-ti-fi-cial*)

Word Class
(adjective)

Pronunciation / Syllables

Definition:

Artificial objects, materials, or processes do not occur naturally and are created by human beings, for example using science or technology.



Mr Stein put **artificial** flowers in the classroom.

Synonym:

fake

synthetic

Antonym:

genuine

sincere

Prefix / Suffix:

in-

-ly

Rhyme:

official

superficial

Link Word:

sweetened

environment



Shinobi Word of the Day

Word of the Day:

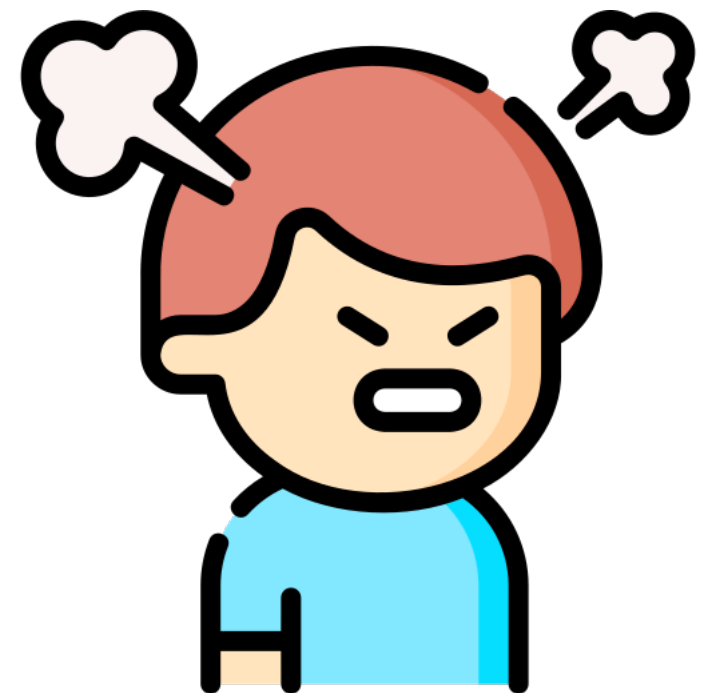
Pronunciation / Syllables

rooted
(root-ed)

Word Class
(adjective)

Definition:

If you say that one thing is rooted in another, you mean that it is strongly influenced by it or has developed from it.



Billy was **rooted** to the spot when he was told off by Mrs Foley.

Synonym:

embedded

fixed

Antonym:

regress

deteriorate

Prefix / Suffix

up-

-ness

Rhyme:

suited

looted

Link Word:

traditional

deep

Vocabulary Laboratory



Describe / Definition:

Use it in a sentence:

Focus Word (write below):

Word Class:

Synonyms:

(words with same / similar meaning)

Antonyms:

(words with opposite meaning)

Draw your sentence:

Rhymes:

(words that sound the same)

Link Words:

(Example: football = pitch, team, player)

Vocabulary Visualiser

Draw the
Grasshopper words
and bring them to life.



Word: glove

Word: trap

Word: branch

Word: Autumn



Vocabulary Visualiser

Draw the **Shinobi**
words and bring
them to life.



Word: weave

Word: artificial

Word: motionless

Word: rooted



Matching Meanings

Draw lines from the **Grasshopper** words to their definitions.



Grasshopper Word

Grasshopper Definitions

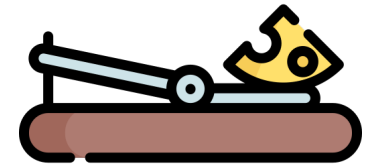
glove

The *** of a tree are the parts that grow out from its trunk and have leaves, flowers, or fruit growing on them.



branch

A *** is a device which is placed somewhere or a hole which is dug somewhere in order to catch animals or birds.



within

*** are pieces of clothing which cover your hands and wrists and have individual sections for each finger.



trap

*** is the season between summer and winter when the weather becomes cooler and the leaves fall off the trees.



Autumn

If something is *** a place, area, or object, it is inside it or surrounded by it.



Matching Meanings

Draw lines from the **Shinobi** words to their definitions.



Shinobi Word

Shinobi Definitions

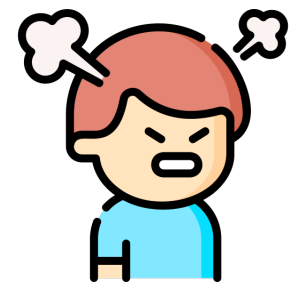
weave

*** objects, materials, or processes do not occur naturally and are created by human beings, for example using science or technology.



motionless

If you say that one thing is *** in another, you mean that it is strongly influenced by it or has developed from it.



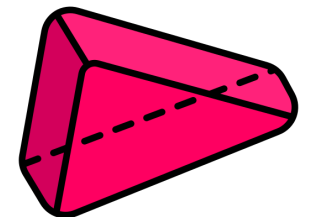
irregular

Someone or something that is *** is not moving at all.



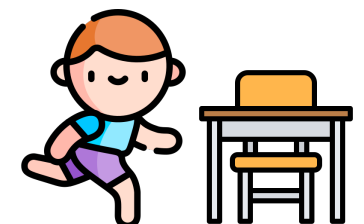
artificial

If events or actions occur at *** intervals, the periods of time between them are of different lengths.



rooted

If you *** your way somewhere, you move between and around things as you go there.





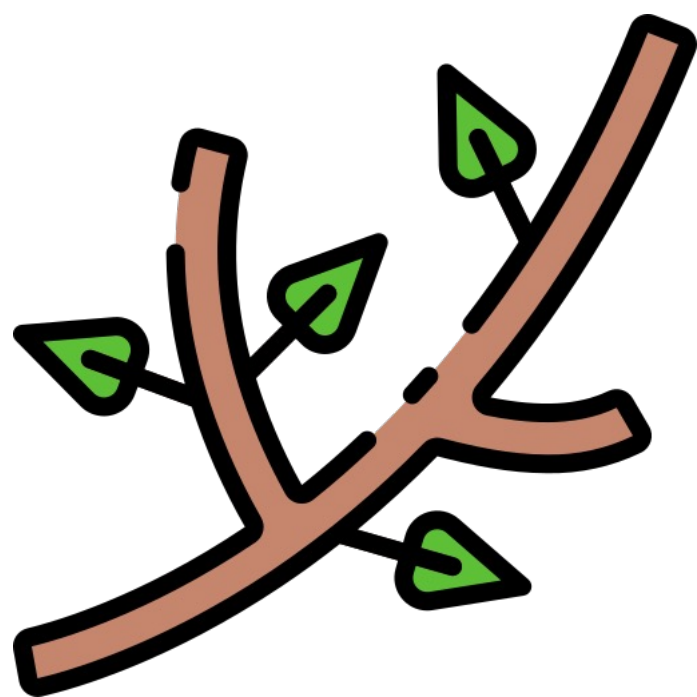
Display Slips

The following slides are for classroom display. As you teach each Word of the Day, words can be displayed in the classroom to enable pupils to use the taught vocabulary in an independent manner.





glove

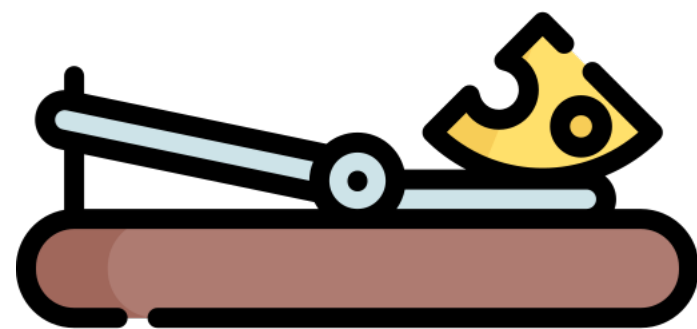
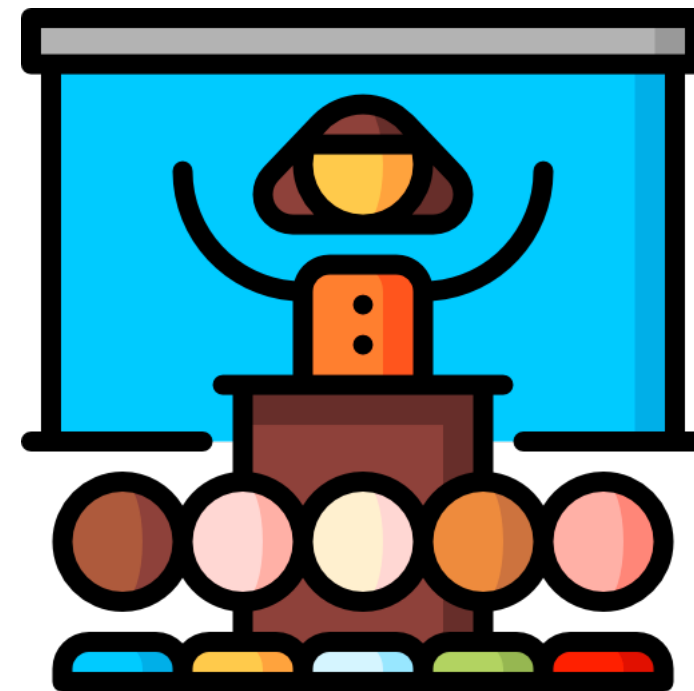


branch





within

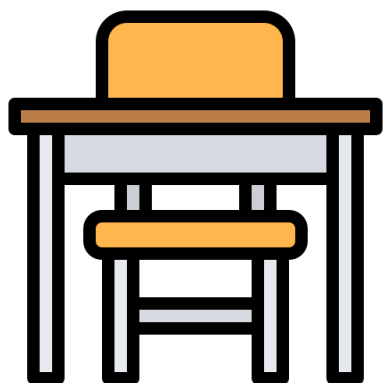


trap





Autumn

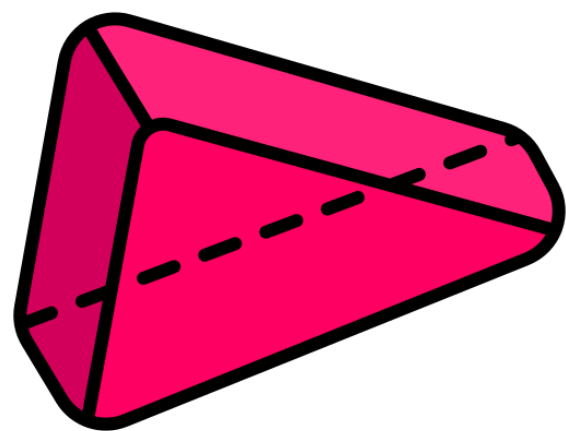
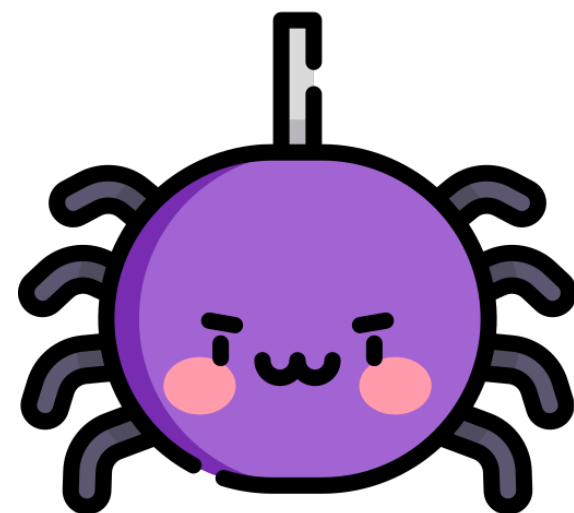


weave





motionless

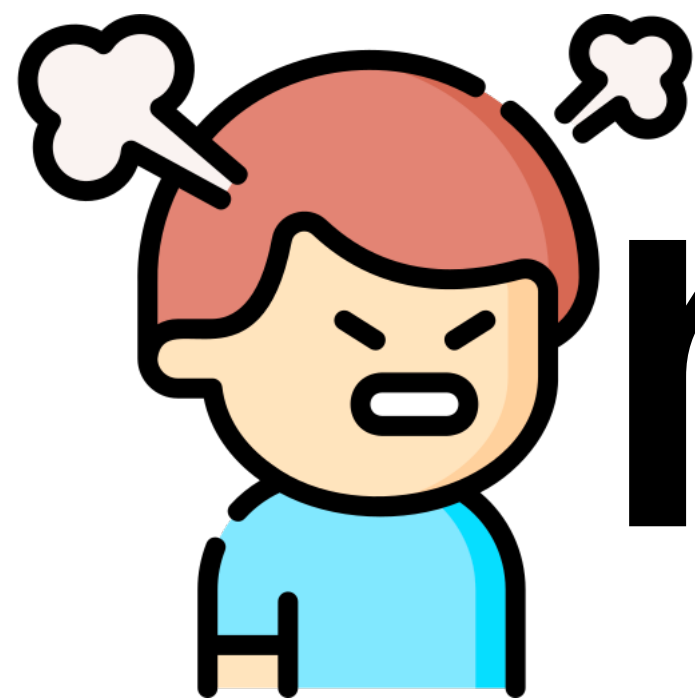


irregular





artificial



rooted





Font Variation

The following display slips contain the same words, but have a more regular font, which have a more regular formation of 'a' and 'g'. Futura is the name of the font.




worried



opini

asure



dia





glove

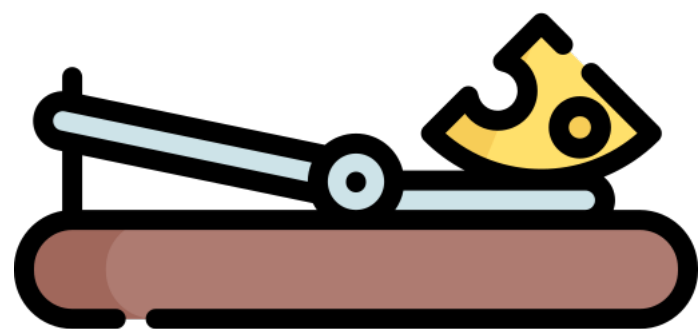
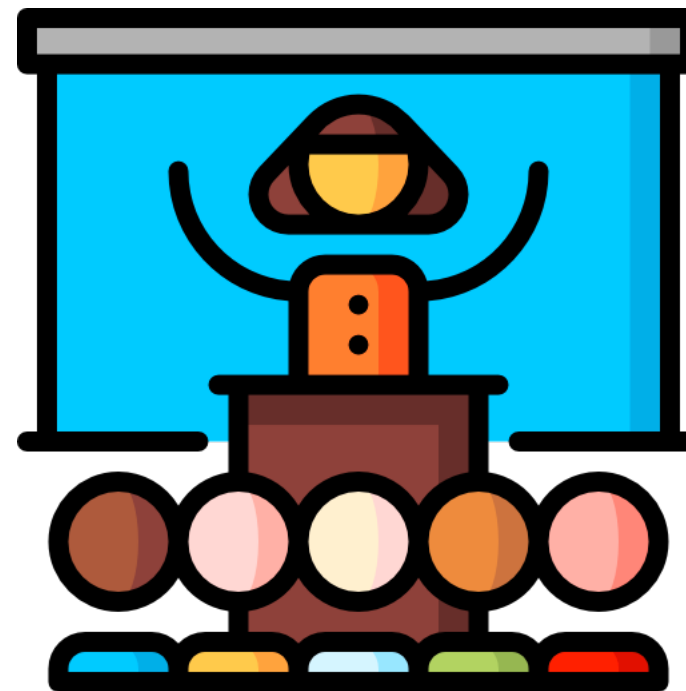


branch





within

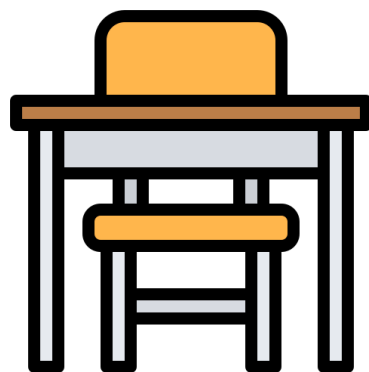


trap





Autumn

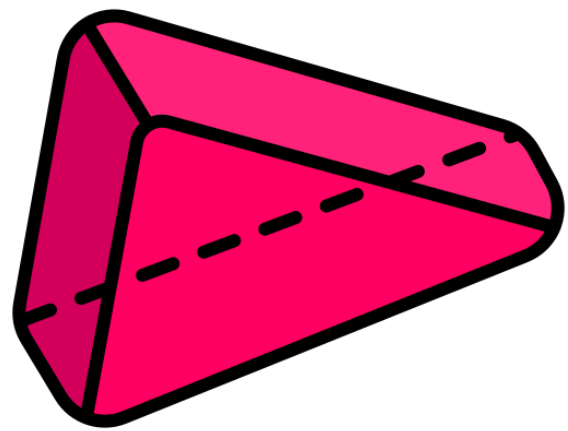
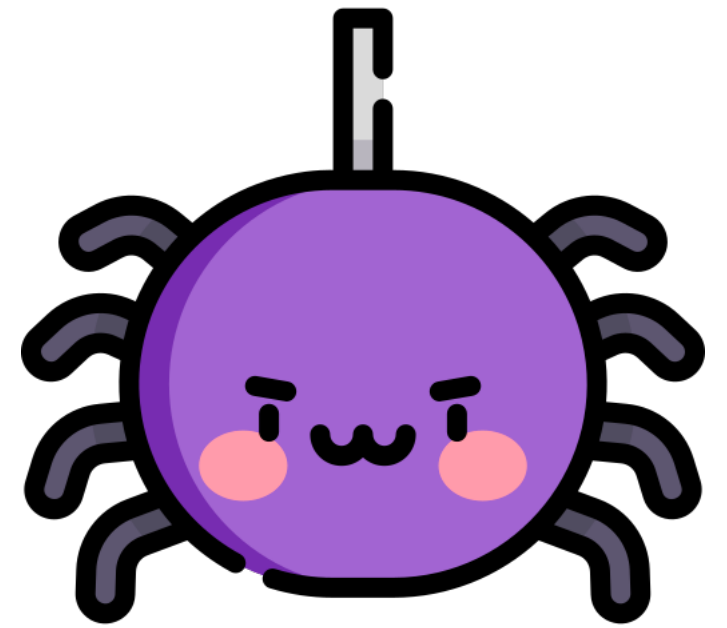


weave





motionless

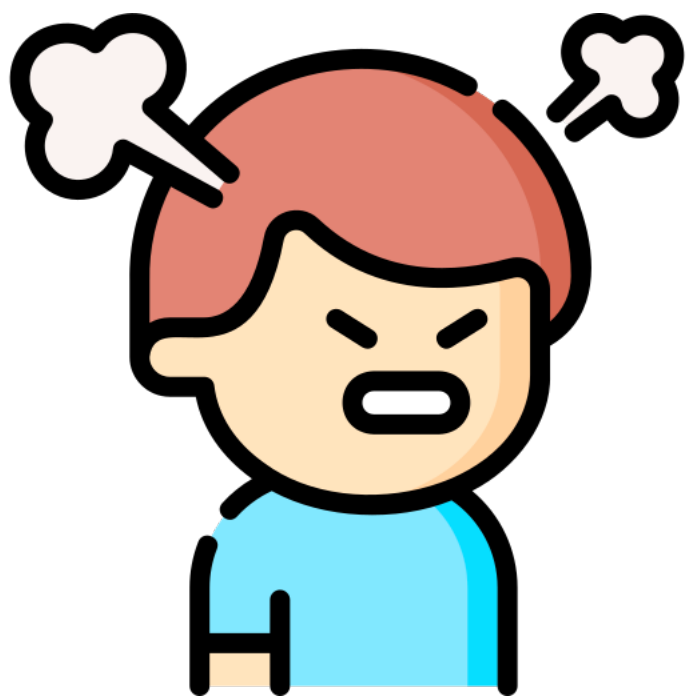


irregular





artificial



rooted

