

Word of the Day

Summer Term 2023

Week 34 – 12th June 2023



This Week's Words

Grasshopper

tear
office
spare
chipped
lift

Shinobi

tolerate
mutter
fixation
unveil

VN VOCABULARY

Grasshopper Word of the Day

Word of the Day: picnic
(pic-nic)

Word Class: (verb / noun)

Definition: If you tear paper, cloth, or another material, or if it tears, you pull it into two pieces or you pull it so that a hole appears in it.

Phrases:

Synonym: word
word

Antonym: word
word

Rhyme: word
word

Link Word: word
word

Phrase Number One: The was a hole in Freddie's new school picnic.

Phrase Number Two:

Shinobi Word of the Day

Word of the Day: tear
(tear)

Word Class: (verb / noun)

Definition: If you tear paper, cloth, or another material, or if it tears, you pull it into two pieces or you pull it so that a hole appears in it.

Phrases:

Synonym: word
word

Antonym: word
word

Prefix / Suffix: word
word

Link Word: word
word

Phrase Number One: The was a tear in Freddie's new school book.

Phrase Number Two:

'Words unlock the doors to a world of understanding...'

This Week's Words

Grasshopper

pass

sharp

late

shock

sigh

Shinobi

bellow

reveal

inferior

racket

instant



VOCABULARY NINJA

Grasshopper (Tier 1)

pass

sharp

late

shock

sigh



VOCABULARY NINJA

Shinobi (Tier 2)

bellow

reveal

inferior

racket

instant



VOCABULARY NINJA



Grasshopper Word of the Day

Word of the Day:

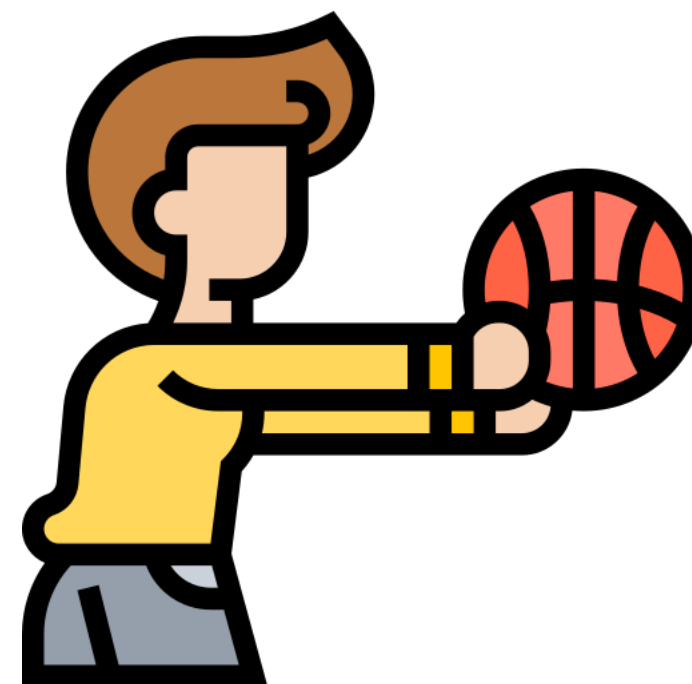
Pronunciation / Syllables

pass
(pass)

Word Class
(verb)

Definition:

If
you pass something to someone,
you take it in your hand and give
it to them.



Stephen **passed** the ball Angie.

Synonym:

give

hand over

Antonym:

Prefix / Suffix:

by-

-ed

Rhyme:

class

grass

Link Word:

expertly

hard



Grasshopper Word of the Day

Word of the Day:

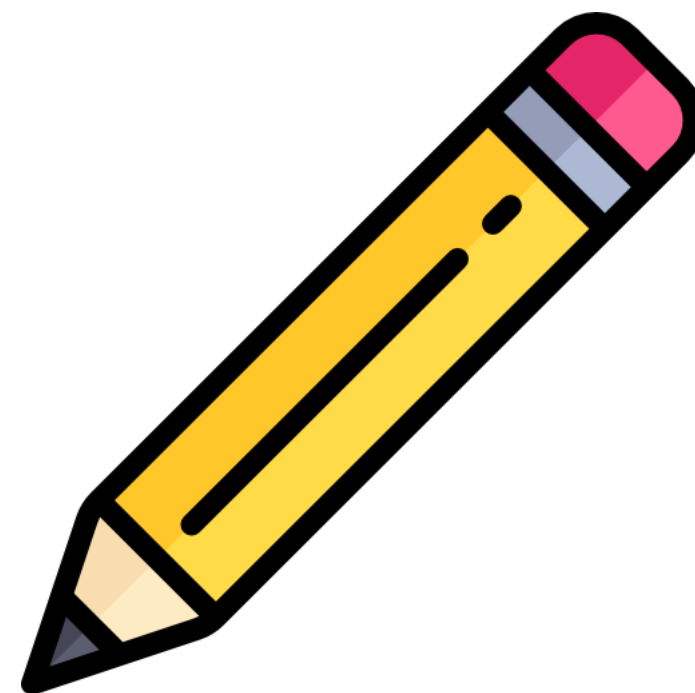
Pronunciation / Syllables

sharp
(sharp)

Word Class
(adjective)

Definition:

A sharp point or edge is very thin and can cut through things very easily.



The pencil was very sharp.

Synonym:

cutting
edged

Antonym:

blunt

Prefix / Suffix:

un-
-ly

Rhyme:

harp
carp

Link Word:

instrument
edge



Grasshopper Word of the Day

Word of the Day:

Pronunciation / Syllables

late
(late)

Word Class
(adjective / adverb)

Definition:

Late means after the time that was arranged or expected.



Aston was **late** for school.

Synonym:

unpunctual

tardy

Antonym:

early

punctual

Prefix / Suffix:

re-

-ly

Rhyme:

great

weight

Link Word:

very

again



Grasshopper Word of the Day

Word of the Day:

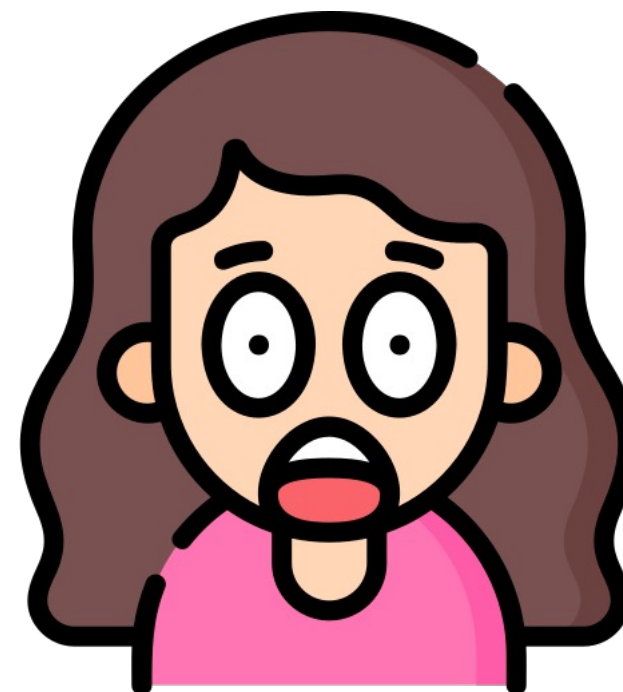
Pronunciation / Syllables

shock
(shock)

Word Class
(noun)

Definition:

If you have a shock,
something suddenly happens which
is unpleasant, upsetting, or very
surprising.



Mrs Phillips had a little **shock** at seeing a mouse.

Synonym:

blow

upset

Antonym:

Prefix / Suffix:

after-

-ing

Rhyme:

stock

block

Link Word:

huge

tough



Grasshopper Word of the Day

Word of the Day:

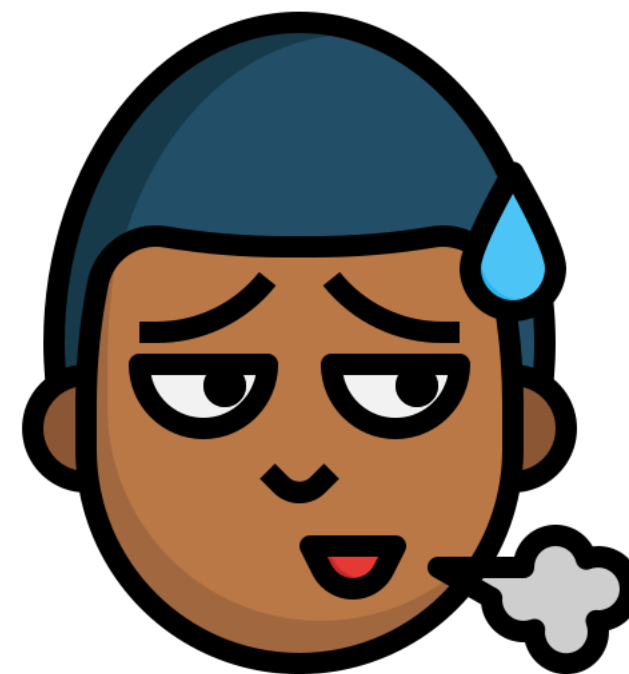
Pronunciation / Syllables

sigh
(*sigh*)

Word Class
(verb)

Definition:

When you sigh, you let out a deep breath, as a way of expressing feelings such as disappointment, tiredness, or pleasure.



Leon took a huge **sigh** when he saw the maths homework.

Synonym:

exhale

moan

Antonym:

Prefix / Suffix:

-ed

-ted

Rhyme:

high

why

Link Word:

tired

big



Shinobi Word of the Day

Word of the Day:

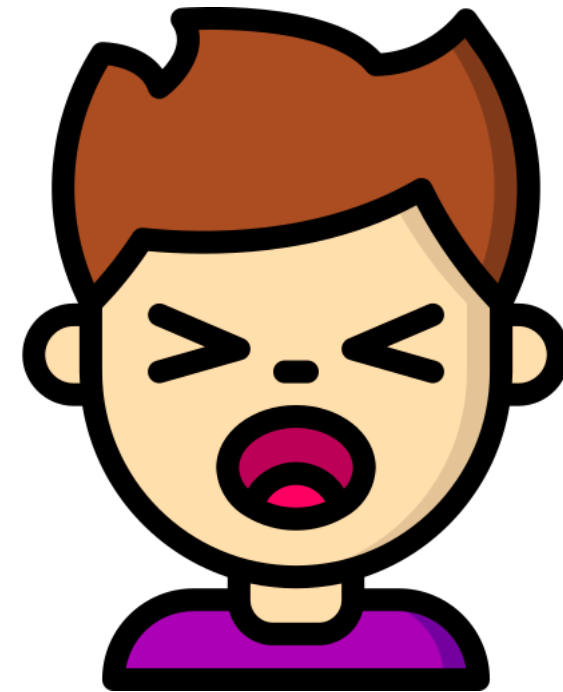
Pronunciation / Syllables

bellow
(bel-low)

Word Class
(verb)

Definition:

If someone bellows, they shout angrily in a loud, deep voice.



Mr Bennett **bellowed** at the class.

Synonym:

roar
shout

Antonym:

whisper

Prefix / Suffix:

-ed
-ing

Rhyme:

fellow
yellow

Link Word:

deep
emit



Shinobi Word of the Day

Word Class
(verb)

Word of the Day:

reveal
(re-veal)

Pronunciation / Syllables

Definition:

To reveal something means to make people aware of it.



Hassan **revealed** his new haircut.

Synonym:

disclose

tell

Antonym:

hide

conceal

Prefix / Suffix:

-ed

-ing

Rhyme:

feel

deal

Link Word:

forced

big



Shinobi Word of the Day

Word of the Day:

inferior
(in-fe-ri-or)

Word Class
(adjective)

Pronunciation / Syllables

Definition:

Something that is inferior is not as good as something else.



The old computer was **inferior** to the new one.

Synonym:

lesser
minor

Antonym:

superior

Prefix / Suffix:

-ity
-ly

Rhyme:

exterior
superior

Link Word:

feeling
item



Shinobi Word of the Day

Word of the Day:

Pronunciation / Syllables

racket
(rack-et)

Word Class
(noun)

Definition:

A racket is a loud unpleasant noise.



The class made a loud **racket** when going for lunch.

Synonym:

noise

din

Antonym:

Prefix / Suffix:

b-

-eer

Rhyme:

jacket

packet

Link Word:

making a

huge



Shinobi Word of the Day

Word of the Day:

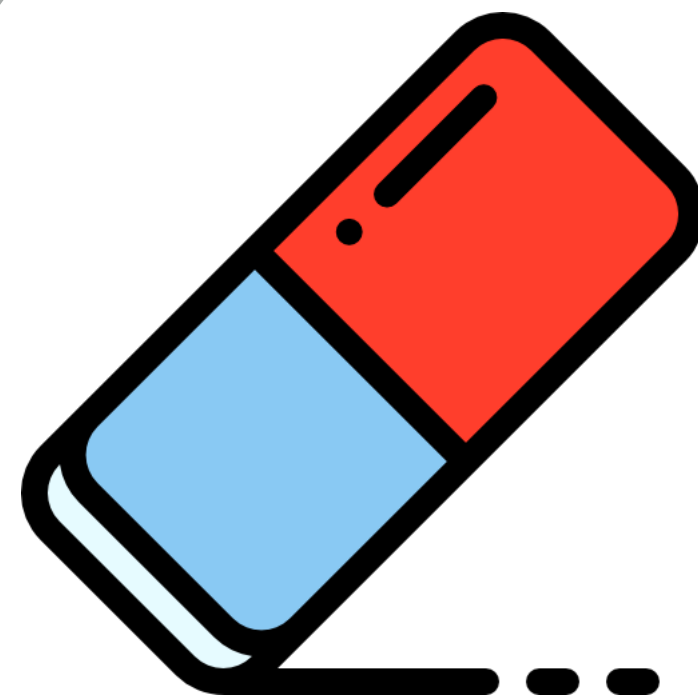
Pronunciation / Syllables

instant
(*in-stant*)

Word Class
(noun)

Definition:

An instant is
an extremely short period of
time.



The mistake was rubbed out in an **instant**.

Synonym:

immediate

prompt

Antonym:

delayed

Prefix / Suffix

-aneous

-ly

Rhyme:

Link Word:

justified

come here

Vocabulary Laboratory



Describe / Definition:

Use it in a sentence:

Focus Word (write below):

Word Class:

Synonyms:

(words with same / similar meaning)

Antonyms:

(words with opposite meaning)

Draw your sentence:

Rhymes:

(words that sound the same)

Link Words:

(Example: football = pitch, team, player)

Vocabulary Visualiser

Draw the
Grasshopper words
and bring them to life.



Word: pass

Word: late

Word: sharp

Word: shock



Vocabulary Visualiser

Draw the **Shinobi**
words and bring
them to life.



Word: reveal

Word: ratchet

Word: inferior

Word: instant



Matching Meanings

Draw lines from the **Grasshopper** words to their definitions.

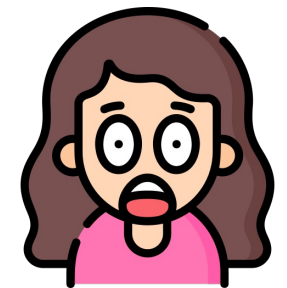


Grasshopper Word

Grasshopper Definitions

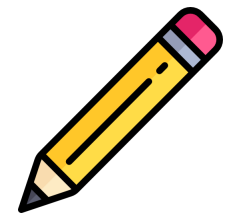
pass

If you have a ***, something suddenly happens which is unpleasant, upsetting, or very surprising.



sharp

When you ***, you let out a deep breath, as a way of expressing feelings such as disappointment, tiredness, or pleasure.



late

If you *** something to someone, you take it in your hand and give it to them.



shock

*** means after the time that was arranged or expected.



sigh

A *** point or edge is very thin and can cut through things very easily.



Matching Meanings

Draw lines from the **Shinobi** words to their definitions.

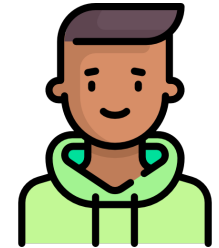


Shinobi Word

Shinobi Definitions

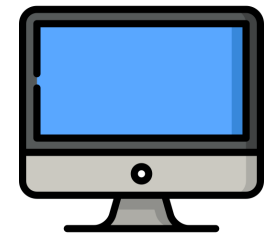
bellow

To *** something means to make people aware of it.



reveal

Something that is *** is not as good as something else.



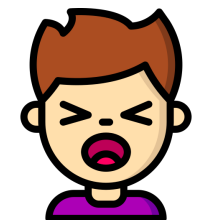
inferior

An *** is an extremely short period of time.



racket

If someone ***, they shout angrily in a loud, deep voice.



instant

A *** is a loud unpleasant noise.





Display Slips

The following slides are for classroom display. As you teach each Word of the Day, words can be displayed in the classroom to enable pupils to use the taught vocabulary in an independent manner.





pass

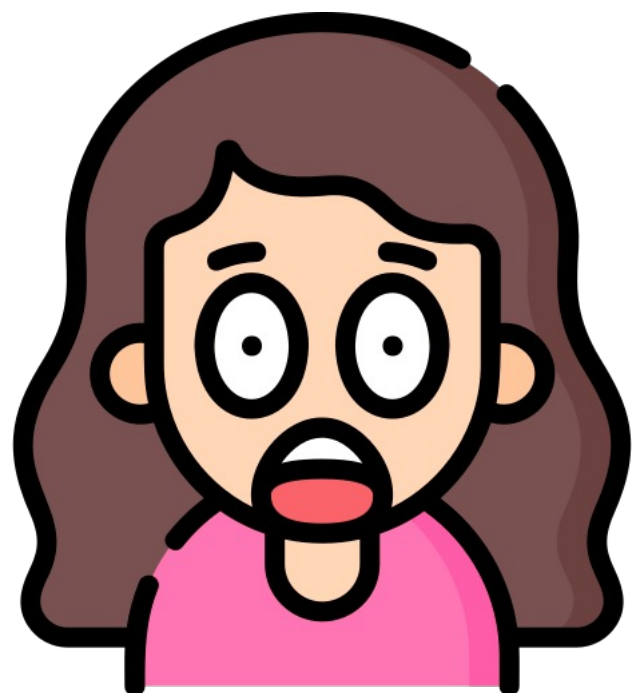


sharp





late

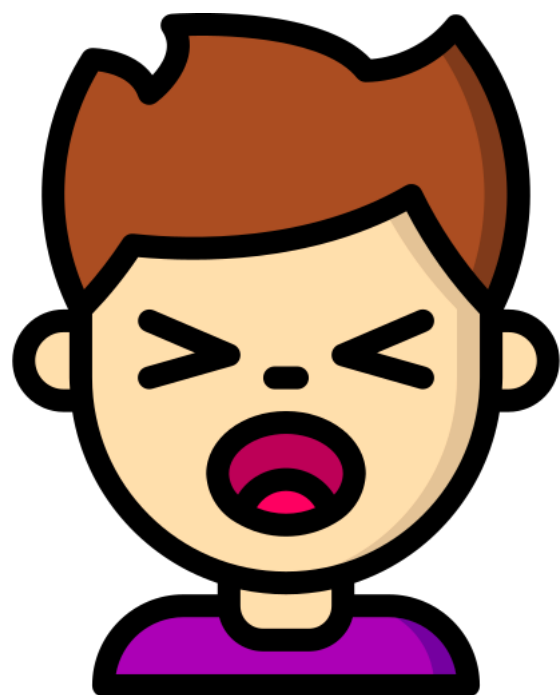


shock





sigh

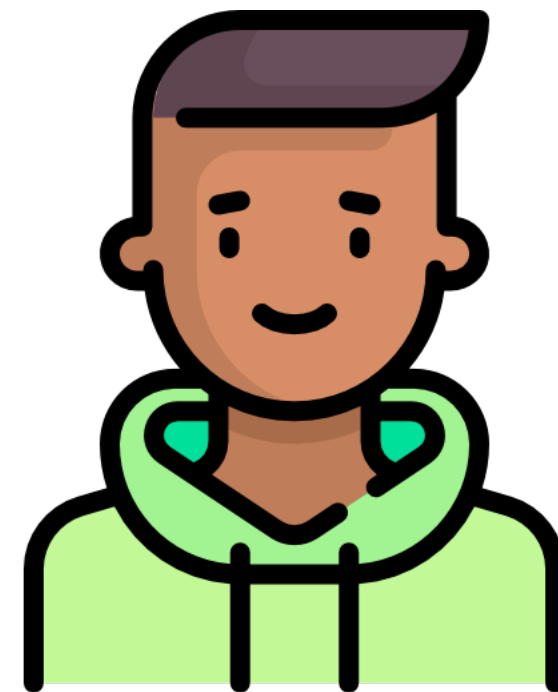


bellow





reveal

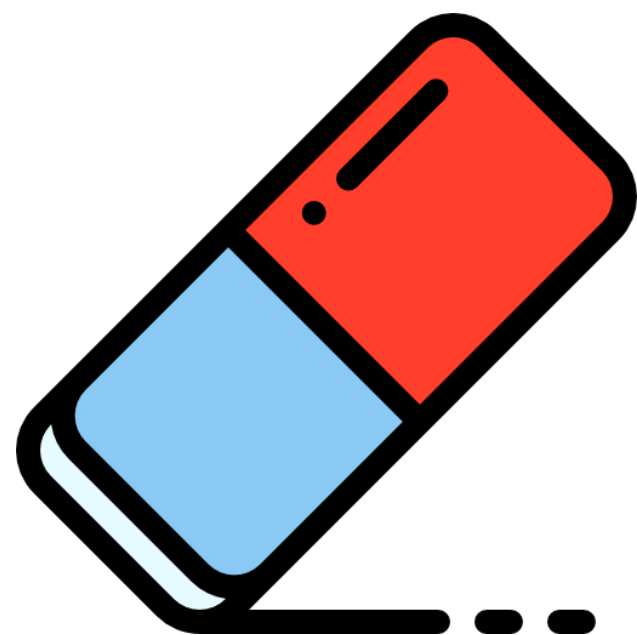


inferior





racket



instant

