

# Word of the Day

## Summer Term 2023

Week 30 – 8th May 2023



### This Week's Words

**Grasshopper**

tear  
office  
spare  
chipped  
lift

**Shinobi**

tolerate  
mutter  
fixation  
unveil

**VN VOCABULARY**

### Grasshopper Word of the Day

**Word of the Day:** picnic  
*(pic-nic)*

**Word Class:** (verb / noun)

**Definition:** If you tear paper, cloth, or another material, or if it tears, you pull it into two pieces or you pull it so that a hole appears in it.

**Phrases:**

**Synonym:** word  
word

**Antonym:** word  
word

**Rhyme:** word  
word

**Link Word:** word  
word

**Phrase Number One**

**Phrase Number Two**

The was a hole in Freddie's new school picnic.

### Shinobi Word of the Day

**Word of the Day:** tear  
*(tear)*

**Word Class:** (verb / noun)

**Definition:** If you tear paper, cloth, or another material, or if it tears, you pull it into two pieces or you pull it so that a hole appears in it.

**Phrases:**

**Synonym:** word  
word

**Antonym:** word  
word

**Prefix / Suffix:** word  
word

**Link Word:** word  
word

**Phrase Number One**

**Phrase Number Two**

The was a tear in Freddie's new school book.

**'Words unlock the doors to a world of understanding...'**

# **This Week's Words**

**Grasshopper**

**rude**

**mouth**

**basic**

**dab**

**rewind**

**Shinobi**

**recoil**

**motive**

**sense**

**subtle**

**exact**



**VOCABULARY NINJA**

# Grasshopper (Tier 1)

**rude**

**mouth**

**basic**

**dab**

**rewind**



**VOCABULARY NINJA**

# Shinobi (Tier 2)

**recoil**

**motive**

**sense**

**subtle**

**exact**



**VOCABULARY NINJA**



# Grasshopper Word of the Day

Word of the Day:

Pronunciation / Syllables

**rude**  
(*rude*)

Word Class  
(adjective)

Definition:

When people are rude, they act in an impolite way towards other people or say impolite things about them.



Aaron was **rude** to Mrs Jenkins

Synonym:

impolite

disrespectful

Antonym:

polite

Prefix / Suffix:

-ness

-ly

Rhyme:

food

mood

Link Word:

person

group



# Grasshopper Word of the Day

Word of the Day:

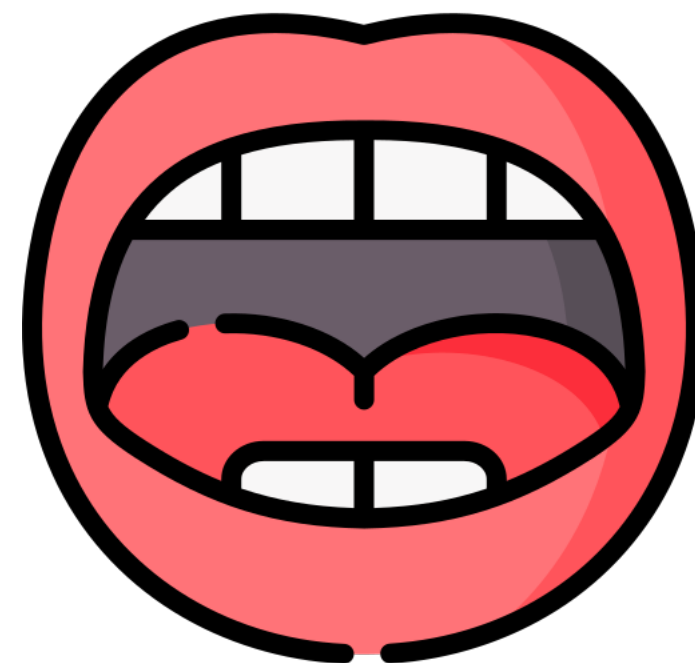
mouth  
(*mouth*)

Word Class  
(noun)

Pronunciation / Syllables

## Definition:

Your mouth is the area of your face where your lips are or the space behind your lips where your teeth and tongue are.



Alicia put the **pen** in her mouth.

Synonym:

lips

Antonym:

Prefix / Suffix:

-ing

Rhyme:

south

Link Word:

face

smile



# Grasshopper Word of the Day

Word of the Day:

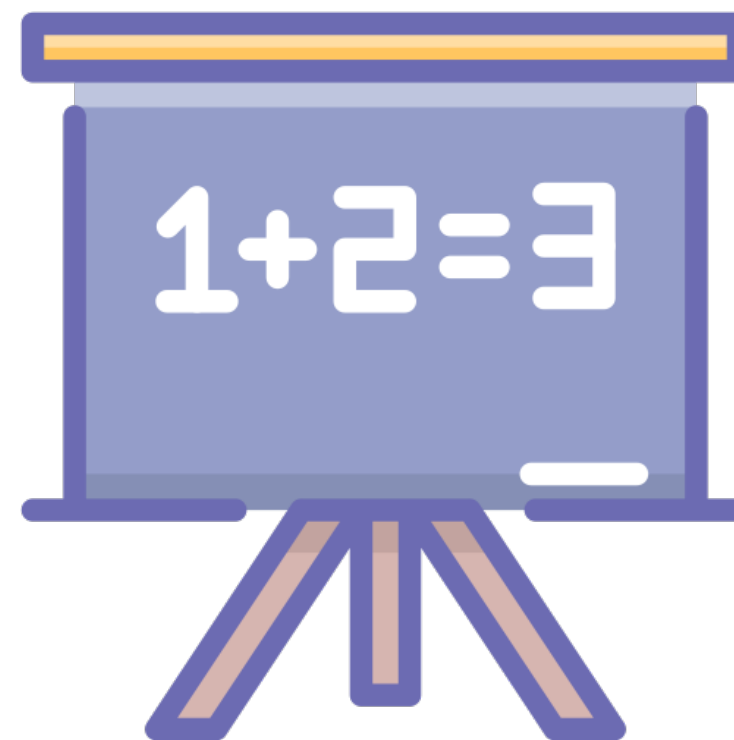
Pronunciation / Syllables

**basic**  
(ba-sic)

Word Class  
(adjective)

## Definition:

You can use basic to describe something that is very simple in style and has only the most necessary features, without any luxuries.



**Kai** could do basic maths.

Synonym:

essential

primary

Antonym:

unimportant

secondary

Prefix / Suffix:

Rhyme:

Link Word:

English

dancing



# Grasshopper Word of the Day

Word of the Day:

Pronunciation / Syllables

dab  
(*dab*)

Word Class  
(verb)

Definition:

If you dab something, you touch it several times using quick, light movements.



Henry **dabbed** his paint brush in to the paint

Synonym:

pat  
touch

Antonym:

Prefix / Suffix:

-ing  
-bed

Rhyme:

crab  
lab

Link Word:

paint  
brush





# Grasshopper Word of the Day

Word of the Day:

Pronunciation / Syllables

**rewind**  
(re-wind)

Word Class  
(adjective / noun)

## Definition:

When the tape in a video or tape recorder rewinds or when you rewind it, the tape goes backwards so that you can play it again.



Fatima liked to **rewind** the tape back for the teacher

Synonym:

reverse

undo

Antonym:

Fast-forward

Prefix / Suffix:

-ing

Rhyme:

whined

Link Word:

tape

episode



# Shinobi Word of the Day

Word Class  
(verb)

Word of the Day:

**recoil**  
(re-coil)

Pronunciation / Syllables

## Definition:

If something makes you recoil, you move your body quickly away from it because it frightens, offends, or hurts you.



Oliver **recoiled** at seeing a rat.

Synonym:

pull-back

flinch

Antonym:

Prefix / Suffix:

-ed

Rhyme:

soil

boil

Link Word:

in horror

suddenly



# Shinobi Word of the Day

Word of the Day:

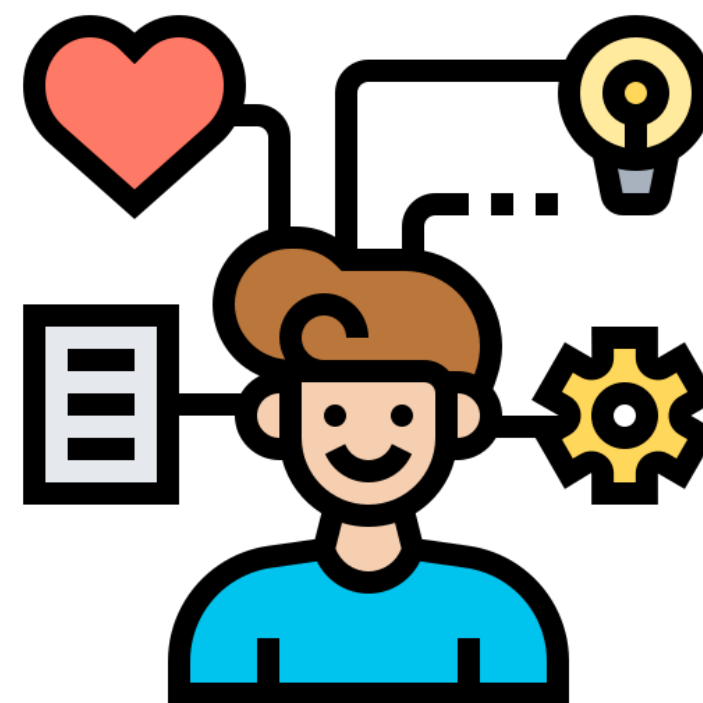
Pronunciation / Syllables

**motive**  
(*mo-tive*)

Word Class  
(noun)

Definition:

Your motive for doing something is your reason for doing it.



Jack's **motive** for working hard was to get good marks.

Synonym:

reason

cause

Antonym:

Prefix / Suffix:

e-

pro-

Rhyme:

Link Word:

team

personal



# Shinobi Word of the Day

Word of the Day:

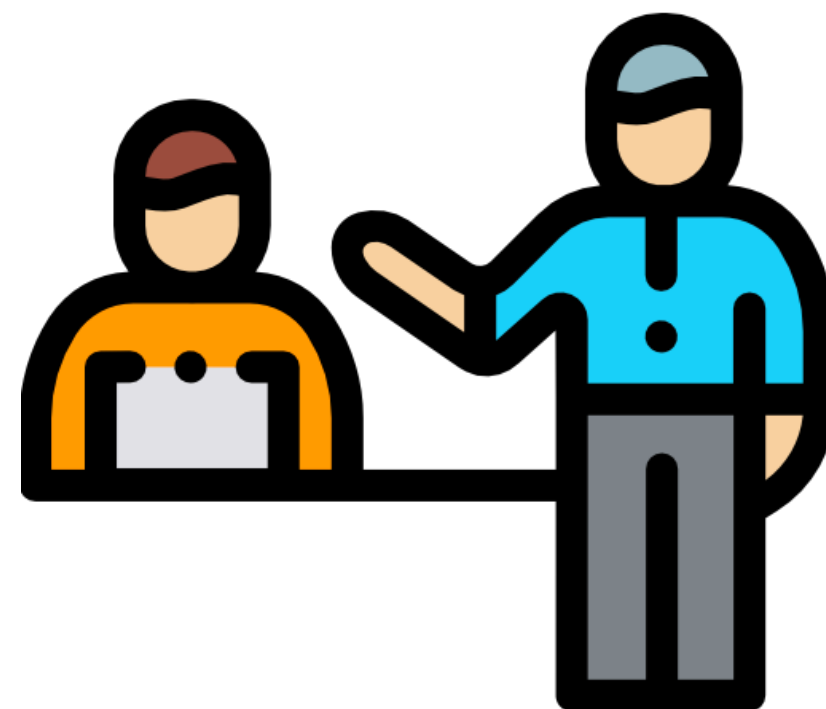
**sense**  
(sense)

Word Class  
(verb / noun)

Pronunciation / Syllables

## Definition:

If you sense something, you become aware of it or you realise it, although it is not very obvious.



Usman had **sensed** Mr Smith was watching him work.

Synonym:

feeling  
awareness

Antonym:

Prefix / Suffix:

non-  
-less

Rhyme:

dense  
intense

Link Word:

presence  
their fear



# Shinobi Word of the Day

Word of the Day:

Pronunciation / Syllables

subtle  
(sub-tle)

Word Class  
(adjective)

Definition:

Something that is subtle is not immediately obvious or noticeable.



Sally used **subtle** shades of brown in her drawing.

Synonym:

delicate

fine

Antonym:

crude

Prefix / Suffix:

un-

-ness

Rhyme:

scuttle

Link Word:

whisper

touch



# Shinobi Word of the Day

Word of the Day:

Pronunciation / Syllables

**exact**  
(*ex-act*)

Word Class  
(adjective)

## Definition:

Exact means correct in every detail. For example, an exact copy is the same in every detail as the thing it is copied from.



Mrs Johnson knew the **exact** definitions.

Synonym:

Antonym:

Prefix / Suffix

Rhyme:

Link Word:

-ly

fact

detail

-ness

react

correct

# Vocabulary Laboratory



Describe / Definition:

Use it in a sentence:

Focus Word (write below):

Word Class:

**Synonyms:**

(words with same / similar meaning)

**Antonyms:**

(words with opposite meaning)

**Draw your sentence:**

**Rhymes:**

(words that sound the same)

**Link Words:**

(Example: football = pitch, team, player)

# Vocabulary Visualiser

Draw the  
**Grasshopper** words  
and bring them to life.



Word: rude

Word: mouth

Word: dab

Word: rewind





# Vocabulary Visualiser

Draw the **Shinobi**  
words and bring  
them to life.



Word: motive

Word: sense

Word: subtle

Word: exact



# Matching Meanings

Draw lines from the **Grasshopper** words to their definitions.

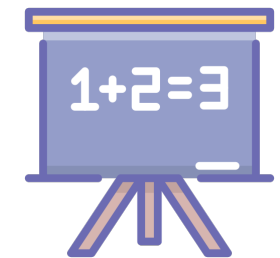


## Grasshopper Word

## Grasshopper Definitions

rude

You can use \*\*\* to describe something that is very simple in style and has only the most necessary features, without any luxuries.



mouth

If you \*\*\* something, you touch it several times using quick, light movements.



basic

When people are \*\*\*, they act in an impolite way towards other people or say impolite things about them.



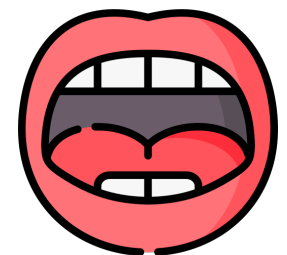
dab

When the tape in a video or tape recorder \*\*\* or when you \*\*\* it, the tape goes backwards so that you can play it again.



rewind

Your \*\*\* is the area of your face where your lips are or the space behind your lips where your teeth and tongue are.



# Matching Meanings

Draw lines from the **Shinobi** words to their definitions.

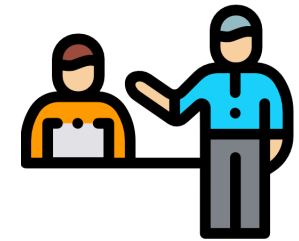


## Shinobi Word

## Shinobi Definitions

recoil

If you \*\*\* something, you become aware of it or you realize it, although it is not very obvious.



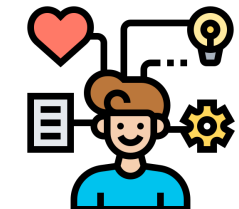
motive

Something that is \*\*\* is not immediately obvious or noticeable.



sense

Your \*\*\* for doing something is your reason for doing it.



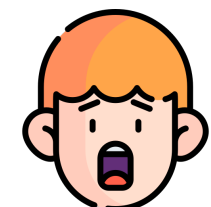
subtle

\*\*\* means correct in every detail. For example, an \*\*\* copy is the same in every detail as the thing it is copied from.



exact

If something makes you \*\*\*, you move your body quickly away from it because it frightens, offends, or hurts you.





# Display Slips

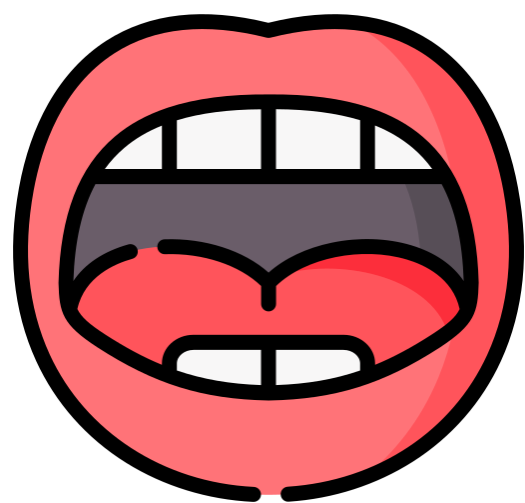
The following slides are for classroom display. As you teach each Word of the Day, words can be displayed in the classroom to enable pupils to use the taught vocabulary in an independent manner.





# ru

de

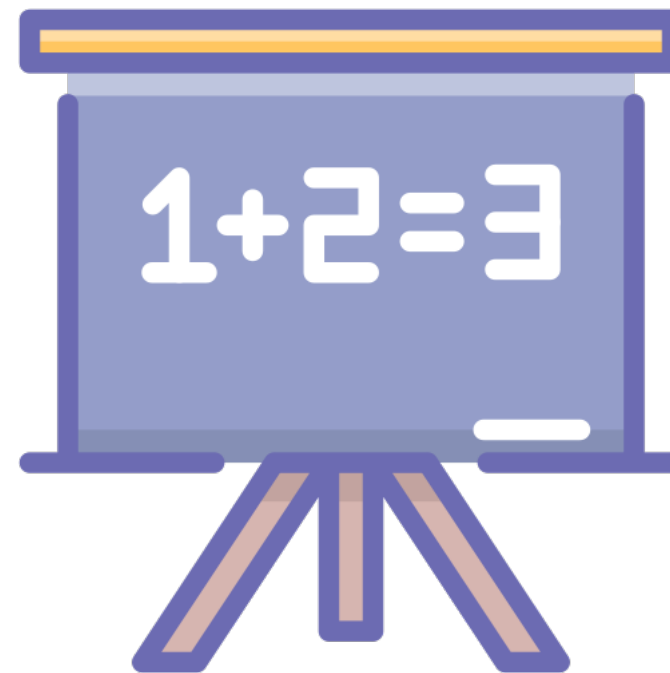


# mouth





# basic



# dab





rewind

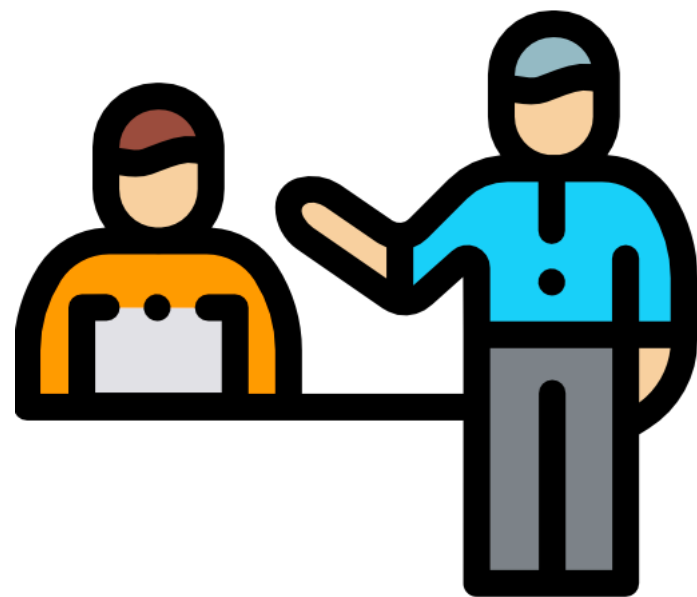


recoil





# motive



# sense







# subtle



# exact

