

# Word of the Day

## Summer Term 2023

Week 32 – 22nd May 2023



### This Week's Words

**Grasshopper**

- tear
- office
- spare
- chipped
- lift

**Shinobi**

- tolerate
- mutter
- fixation
- unveil

**VN VOCABULARY**

### Grasshopper Word of the Day

**Word of the Day:** picnic  
*(pic-nic)*

**Word Class:** (verb / noun)

**Definition:** If you tear paper, cloth, or another material, or if it tears, you pull it into two pieces or you pull it so that a hole appears in it.

**Phrases:**

- Phrase Number One: The was a hole in Freddie's new school picnic.
- Phrase Number Two: Link Word: word

**Synonym:** word  
**Antonym:** word  
**Rhyme:** word

### Shinobi Word of the Day

**Word of the Day:** tear  
*(tear)*

**Word Class:** (verb / noun)

**Definition:** If you tear paper, cloth, or another material, or if it tears, you pull it into two pieces or you pull it so that a hole appears in it.

**Phrases:**

- Phrase Number One: The was a tear in Freddie's new school book.
- Phrase Number Two: Link Word: word

**Synonym:** word  
**Antonym:** word  
**Prefix / Suffix:** word  
**Rhyme:** word

'Words unlock the doors to a world of understanding...'

# This Week's Words

**Grasshopper**

**peel**

**change**

**vehicle**

**area**

**present**

**Shinobi**

**pressure**

**fond**

**adept**

**success**

**tame**



**VOCABULARY NINJA**

# Grasshopper (Tier 1)

peel

change

vehicle

area

present



**VOCABULARY NINJA**

# Shinobi (Tier 2)

**pressure**

**fond**

**adept**

**success**

**tame**



**VOCABULARY NINJA**



# Grasshopper Word of the Day

Word of the Day:

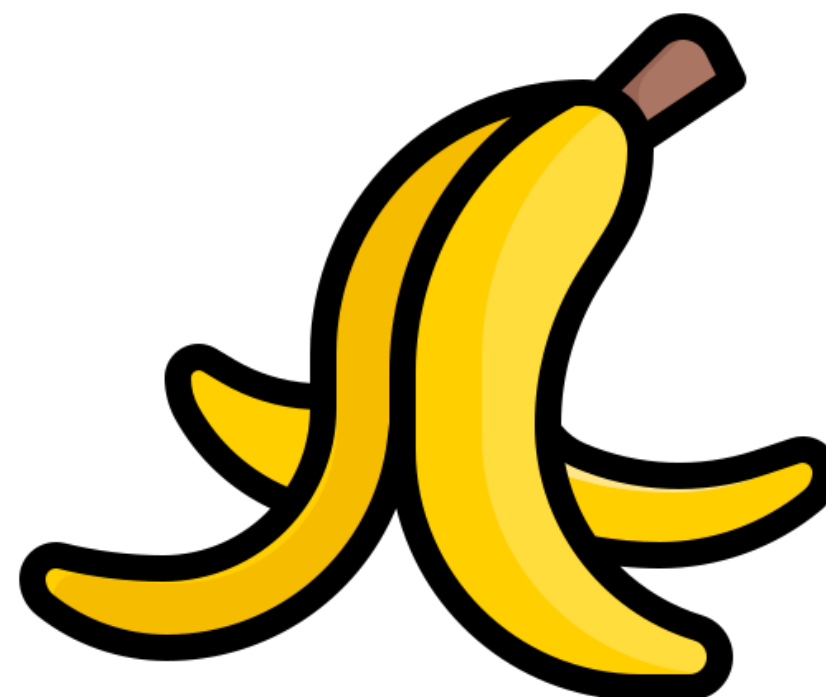
Pronunciation / Syllables

peel  
(*peel*)

Word Class  
(noun / verb)

Definition:

The peel of a fruit such as a lemon or an apple is its skin.



Mr Simons tripped on the banana peel.

Synonym:

skin

covering

Antonym:

Prefix / Suffix:

un-

-ed

Rhyme:

reel

feel

Link Word:

skin

carefully



# Grasshopper Word of the Day

Word of the Day:

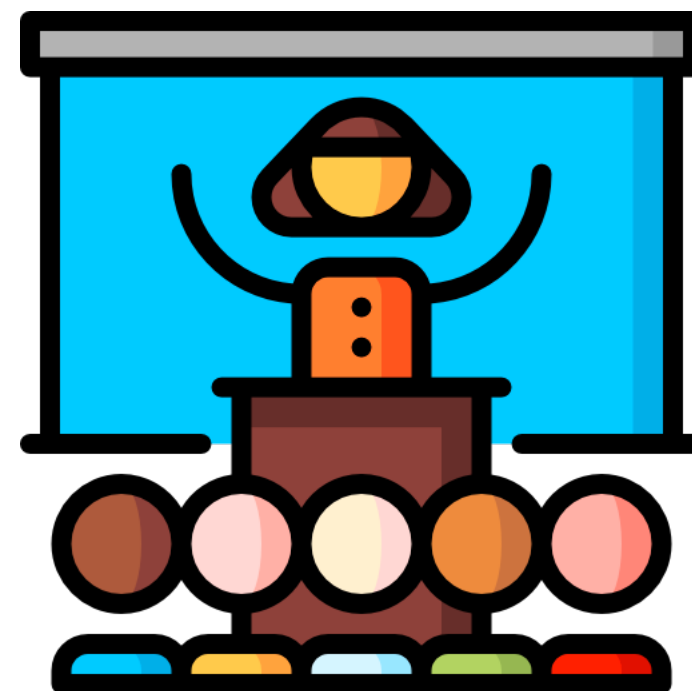
Pronunciation / Syllables

change  
(change)

Word Class  
(noun / verb)

Definition:

If there is a change in something,  
it becomes different.



Miss Baxter **changed** the classroom display.

Synonym:

swap

exchange

Antonym:

keep

Prefix / Suffix:

ex-

-able

Rhyme:

strange

arrange

Link Word:

clothes

money



# Grasshopper Word of the Day

Word of the Day:

Pronunciation / Syllables

vehicle  
(ve-hi-cle)

Word Class  
(noun)

## Definition:

A vehicle is a machine such as a car, bus, or truck which has an engine and is used to carry people from place to place.



Mr Yadav drove to school in his new **vehicle**.

Synonym:

automobile

Antonym:

Prefix / Suffix:

-s

Rhyme:

Link Word:

fast

large



# Grasshopper Word of the Day

Word of the Day:

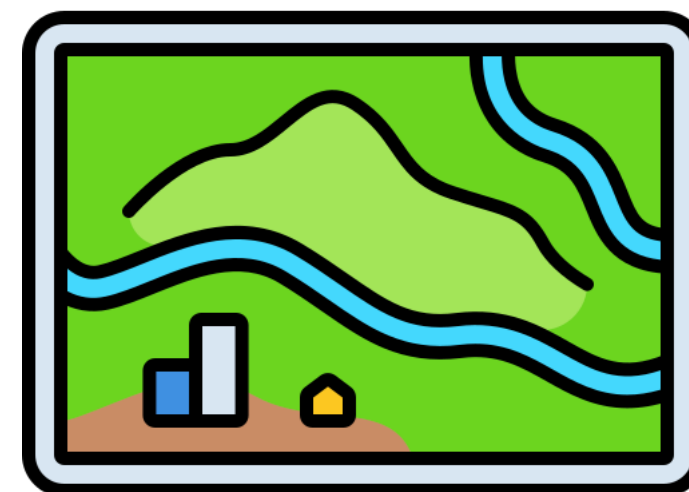
Pronunciation / Syllables

area  
(ar-e-a)

Word Class  
(noun)

Definition:

An area is a particular part of a town, a country, a region, or the world.



Ms Dowey told the class that she lived in an industrial **area**.

Synonym:

region

district

Antonym:

Prefix / Suffix:

sub-

-s

Rhyme:

malaria

hysteria

Link Word:

surface

over





# Grasshopper Word of the Day

Word of the Day:

Pronunciation / Syllables

present  
(*pres-ent*)

Word Class  
(adjective / noun)

## Definition:

You use present to describe things and people that exist now, rather than those that existed in the past or those that may exist in the future.



Mr Edwards wrote his sentence in the **present** tense.

Synonym:

in attendance

here

Antonym:

absent

past

Prefix / Suffix:

re-

-ation

Rhyme:

pleasant

peasant

Link Word:

in the

large



# Shinobi Word of the Day

Word Class  
(noun)

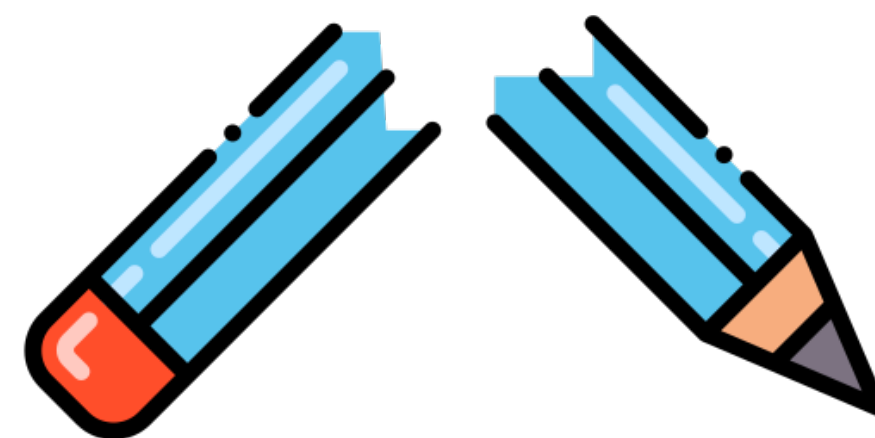
Word of the Day:

**pressure**  
(*pres-sure*)

Pronunciation / Syllables

## Definition:

Pressure is force that you produce when you press hard on something.



Avni put so much **pressure** on her pencil that it broke.

Synonym:

force

oppression

Antonym:

Prefix / Suffix:

non-

-d

Rhyme:

Link Word:

high

hard



# Shinobi Word of the Day

Word of the Day:

Pronunciation / Syllables

fond  
(fond)

Word Class  
(adjective)

Definition:

If you are fond of someone,  
you feel affection for them.



Terrence was very **fond** of maths.

Synonym:

affection for

Antonym:

indifferent to

Prefix / Suffix:

-ly

-ness

Rhyme:

beyond

respond

Link Word:

very

huge



# Shinobi Word of the Day

Word of the Day:

Pronunciation / Syllables

adept  
(a-dept)

Word Class  
(adjective)

Definition:

Someone who  
is adept at something can do it  
skilfully.



Hugo was an **adept** speller.

Synonym:

expert

skilled

Antonym:

inept

unskilled

Prefix / Suffix:

-ly

Rhyme:

kept

slept

Link Word:

impressively

winner



# Shinobi Word of the Day

Word Class  
(noun)

Word of the Day:

**SUCCESS**  
(suc-cess)

Pronunciation / Syllables

Definition:

Success is the achievement of something that you have been trying to do.



The school football team celebrated their huge **success**.

Synonym:

victory  
triumph

Antonym:

failure

Prefix / Suffix:

un-  
-ful

Rhyme:

progress  
express

Link Word:

large  
career



# Shinobi Word of the Day

Word of the Day:

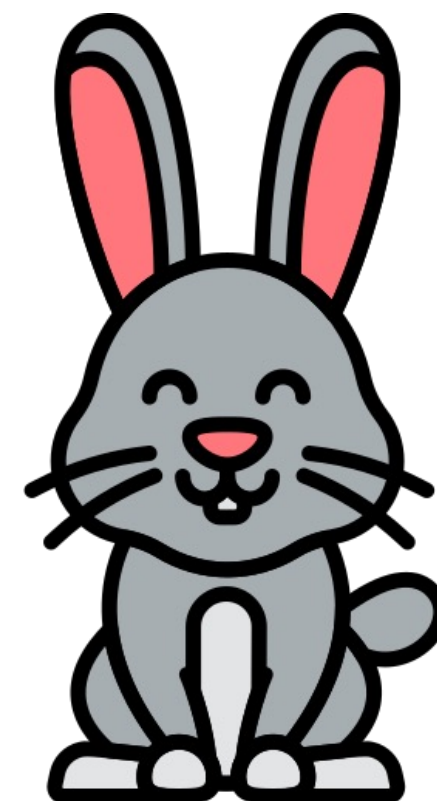
Pronunciation / Syllables

tame  
(*tame*)

Word Class  
(adjective)

Definition:

A tame animal or bird is one that is not afraid of humans.



The class rabbit was very **tame**.

Synonym:

domesticated

docile

Antonym:

wild

fierce

Prefix / Suffix

-ed

-ly

Rhyme:

same

game

Link Word:

very

beast

# Vocabulary Laboratory



Describe / Definition:

Use it in a sentence:

Focus Word (write below):

Word Class:

Synonyms:

(words with same / similar meaning)

Antonyms:

(words with opposite meaning)

Draw your sentence:

Rhymes:

(words that sound the same)

Link Words:

(Example: football = pitch, team, player)

# Vocabulary Visualiser

Draw the  
**Grasshopper** words  
and bring them to life.



Word: peel

Word: area

Word: vehicle

Word: present





# Vocabulary Visualiser

Draw the **Shinobi**  
words and bring  
them to life.



Word: pressure

Word: success

Word: fond

Word: tame



# Matching Meanings

Draw lines from the **Grasshopper** words to their definitions.



## Grasshopper Word

peel

change

vehicle

area

present

## Grasshopper Definitions

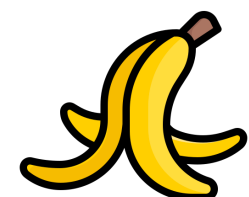
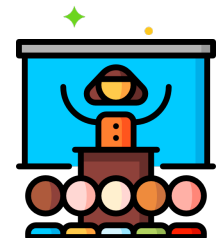
A \*\*\* is a machine such as a car, bus, or truck which has an engine and is used to carry people from place to place.

An \*\*\* is a particular part of a town, a country, a region, or the world.

If there is a \*\*\* in something, it becomes different.

You use \*\*\* to describe things and people that exist now, rather than those that existed in the past or those that may exist in the future.

The \*\*\* of a fruit such as a lemon or an apple is its skin.



# Matching Meanings

Draw lines from the **Shinobi** words to their definitions.



## Shinobi Word

## Shinobi Definitions

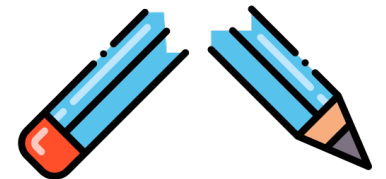
pressure

\*\*\* is the achievement of something that you have been trying to do.



fond

\*\*\* is force that you produce when you press hard on something.



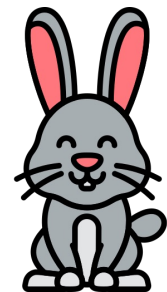
adept

If you are \*\*\* of someone, you feel affection for them.



success

A \*\*\* animal or bird is one that is not afraid of humans.



tame

Someone who is \*\*\* at something can do it skilfully.





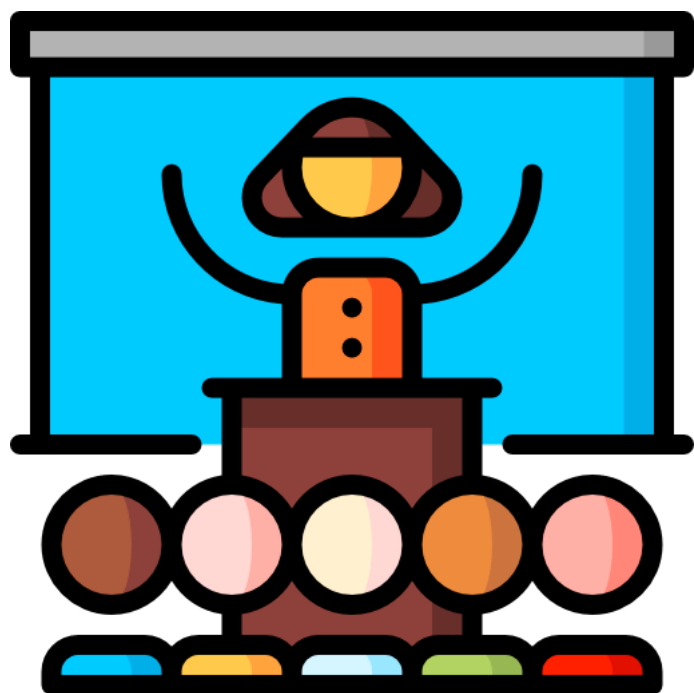
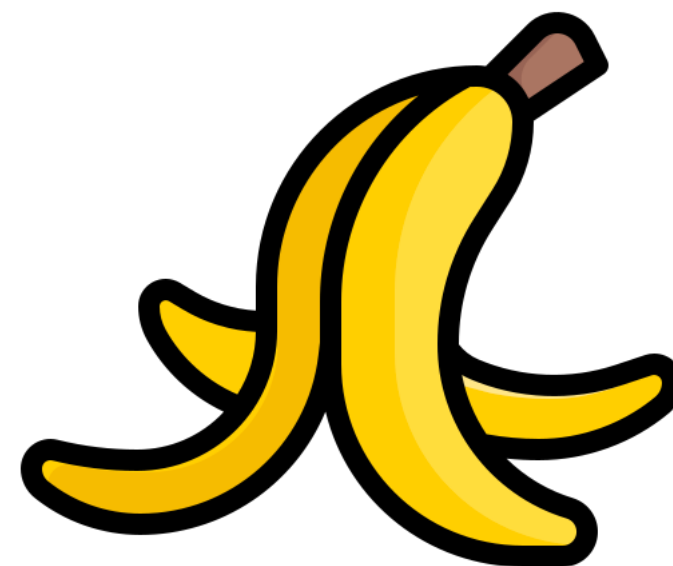
# Display Slips

The following slides are for classroom display. As you teach each Word of the Day, words can be displayed in the classroom to enable pupils to use the taught vocabulary in an independent manner.





peel

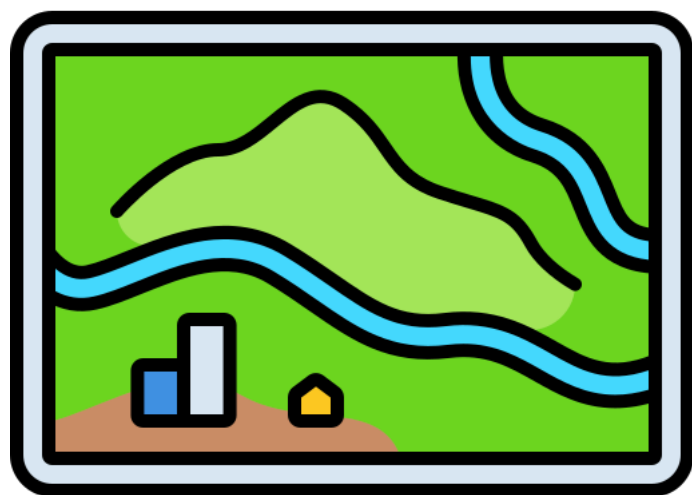


change





# vehicle

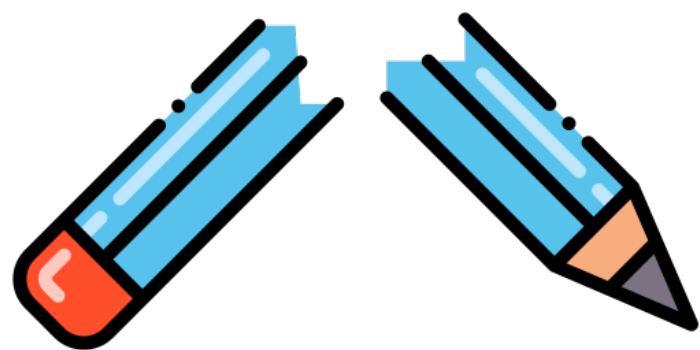


# area





present



pressure





fond



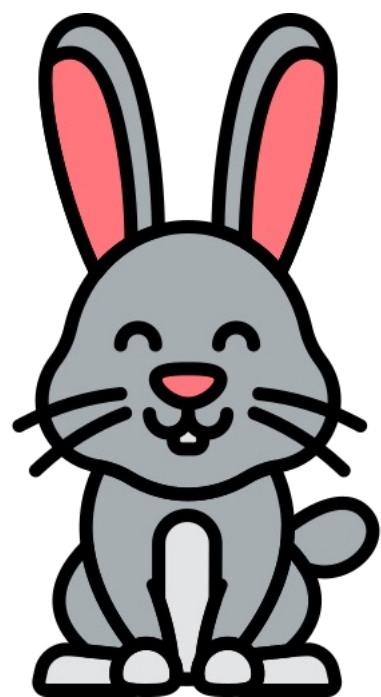
adept







# success



# tame

