

Word of the Day

Summer Term 2023

Week 31 – 15th May 2023



This Week's Words

Grasshopper

tear
office
spare
chipped
lift

Shinobi

tolerate
mutter
fixation
unveil

VN VOCABULARY

Grasshopper Word of the Day

Word of the Day: picnic
(pic-nic)

Word Class: (verb / noun)

Definition: If you tear paper, cloth, or another material, or if it tears, you pull it into two pieces or you pull it so that a hole appears in it.

Phrases:

Synonym: word
word

Antonym: word
word

Rhyme: word
word

Link Word: word
word

Phrase Number One

Phrase Number Two

The was a hole in Freddie's new school picnic.

Shinobi Word of the Day

Word of the Day: tear
(tear)

Word Class: (verb / noun)

Definition: If you tear paper, cloth, or another material, or if it tears, you pull it into two pieces or you pull it so that a hole appears in it.

Phrases:

Synonym: word
word

Antonym: word
word

Prefix / Suffix: word
word

Link Word: word
word

Phrase Number One

Phrase Number Two

The was a tear in Freddie's new school book.

'Words unlock the doors to a world of understanding...'

This Week's Words

Grasshopper

cage

vase

screen

bag

shelf

Shinobi

supply

hideous

flaunt

vary

impress



VOCABULARY NINJA

Grasshopper (Tier 1)

cage

vase

screen

bag

shelf



VOCABULARY NINJA

Shinobi (Tier 2)

supply

hideous

flaunt

vary

impress



VOCABULARY NINJA



Grasshopper Word of the Day

Word of the Day:

Pronunciation / Syllables

cage
(cage)

Word Class
(noun)

Definition:

A cage is a structure of wire or metal bars in which birds or animals are kept.



The school hamster was kept in a cage.

Synonym:

enclosure

pen

Antonym:

Prefix / Suffix:

rib-

-d

Rhyme:

age

stage

Link Word:

locked

metal



Grasshopper Word of the Day

Word of the Day:

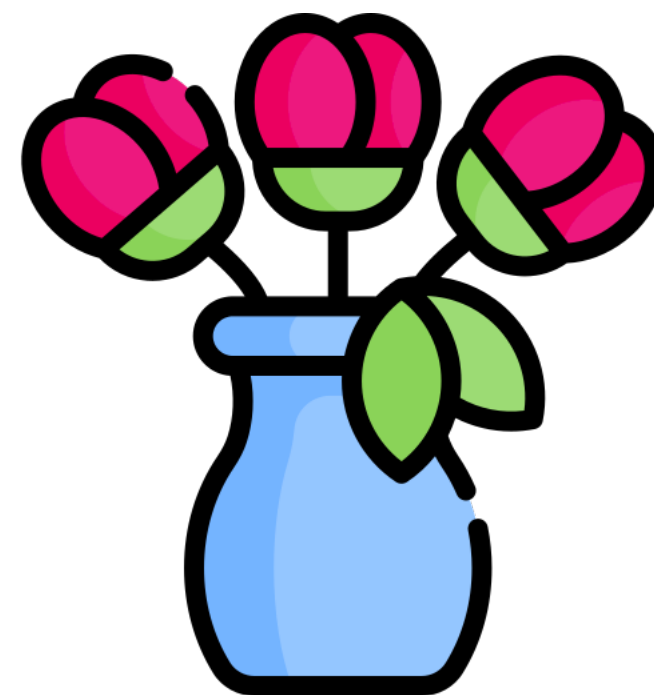
Pronunciation / Syllables

vase
(vase)

Word Class
(noun)

Definition:

A vase is a jar, usually made of glass or pottery, used for holding cut flowers or as an ornament.



Mr Keys put the roses in a **vase**.

Synonym:

jar

container

Antonym:

Prefix / Suffix:

Rhyme:

case

Link Word:

decorative

smashed



Grasshopper Word of the Day

Word of the Day:

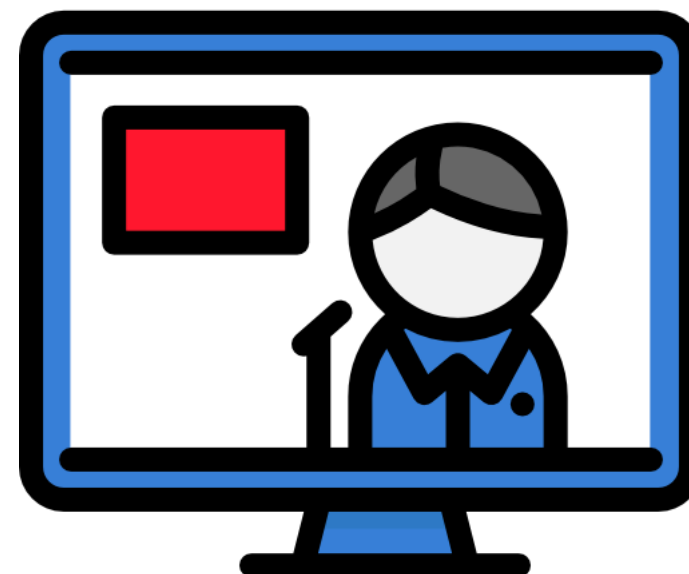
screen
(screen)

Word Class
(noun / verb)

Pronunciation / Syllables

Definition:

A screen is a flat vertical surface on which pictures or words are shown. Television sets and computers have screens, and films are shown on a screen in cinemas.



Mrs Chambers put a film on the **screen**.

Synonym:

blind
display

Antonym:

Prefix / Suffix:

on-
-ing

Rhyme:

seen
green

Link Word:

watched
displayed



Grasshopper Word of the Day

Word of the Day:

Pronunciation / Syllables

bag
(bag)

Word Class
(noun)

Definition:

A bag is a strong container with one or two handles, used to carry things in.



Courtney put her **bag** on her hook in the classroom.

Synonym:

case

pochette

Antonym:

Prefix / Suffix:

hand-

-gage

Rhyme:

flag

rag

Link Word:

carried

full



Grasshopper Word of the Day

Word of the Day:

Pronunciation / Syllables

shelf
(shelf)

Word Class
(noun)

Definition:

A shelf is a flat piece of wood, metal, or glass which is attached to a wall or to the sides of a cupboard. Shelves are used for keeping things on.



Mrs Kapoor put the reading book back on the shelf.

Synonym:

rack

ledge

Antonym:

Prefix / Suffix:

book-

Rhyme:

self

elf

Link Word:

heavy

books



Shinobi Word of the Day

Word of the Day:

Pronunciation / Syllables

supply
(*sup-ply*)

Word Class
(noun / verb)

Definition:

If you supply someone with something that they want or need, you give them a quantity of it.



Julie shared her **supply** of sweets with her friends.

Synonym:

give
contribute

Antonym:

Prefix / Suffix:

over-
-ing

Rhyme:

high
dry

Link Word:

work
food



Shinobi Word of the Day

Word of the Day:

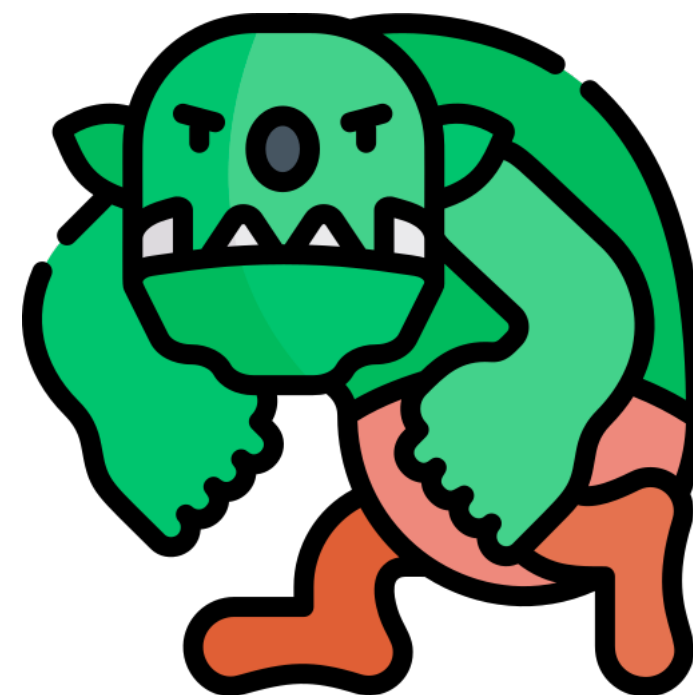
hideous
(hid-e-ous)

Word Class
(adjective)

Pronunciation / Syllables

Definition:

If you say that someone or something is hideous, you mean that they are very ugly or unattractive.



The monster in the book was described as **hideous**.

Synonym:

ugly

repulsive

Antonym:

beautiful

Prefix / Suffix:

-ly

-ness

Rhyme:

Link Word:

looking

mess



Shinobi Word of the Day

Word Class
(verb)

Word of the Day:

flaunt
(*flaunt*)

Pronunciation / Syllables

Definition:

If you say that someone flaunts their possessions, abilities, or qualities, you mean that they display them in a very obvious way, especially in order to try to obtain other people's admiration.



Aditi liked to **flaunt** her work to the teacher.

Synonym:

show off

parade

Antonym:

hide

Prefix / Suffix:

-ing

Rhyme:

haunt

taunt

Link Word:

confidently

their achievement



Shinobi Word of the Day

Word Class
(verb)

Word of the Day:

Pronunciation / Syllables

vary
(*vary*)

Definition:

If things vary, they are different from each other in size, amount, or degree.



Mrs Watson showed the class how sizes can **vary**.

Synonym:

differ

fluctuate

Antonym:

agree

Prefix / Suffix:

-ingly

-ied

Rhyme:

fairy

wary

Link Word:

in size

touch



Shinobi Word of the Day

Word of the Day:

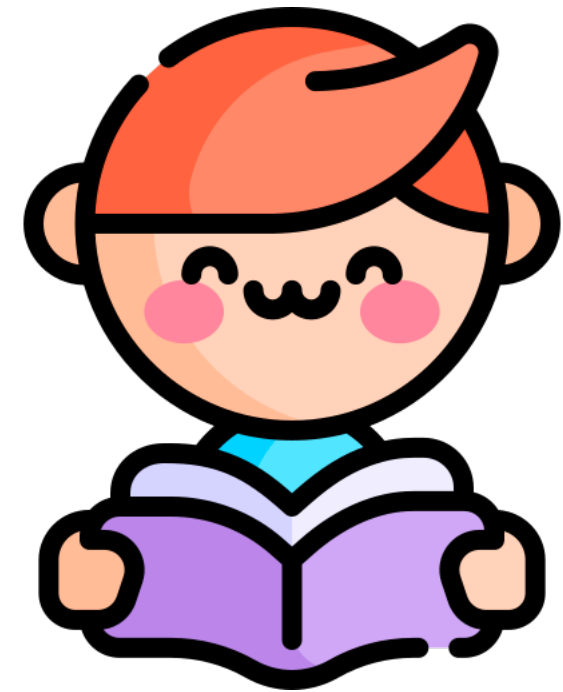
Pronunciation / Syllables

impress
(*im-press*)

Word Class
(verb)

Definition:

If something impresses you,
you feel great admiration for it.



Jonas **impressed** the class with his reading.

Synonym:

amaze
astonish

Antonym:

disappoint

Prefix / Suffix

-ive
-ment

Rhyme:

success
progress

Link Word:

surprisingly
everyone

Vocabulary Laboratory



Describe / Definition:

Use it in a sentence:

Focus Word (write below):

Word Class:

Synonyms:

(words with same / similar meaning)

Antonyms:

(words with opposite meaning)

Draw your sentence:

Rhymes:

(words that sound the same)

Link Words:

(Example: football = pitch, team, player)

Vocabulary Visualiser

Draw the
Grasshopper words
and bring them to life.



Word: cage

Word: screen

Word: vase

Word: bag



Vocabulary Visualiser

Draw the **Shinobi**
words and bring
them to life.



Word: supply

Word: flaunt

Word: hideous

Word: impress



Matching Meanings

Draw lines from the **Grasshopper** words to their definitions.

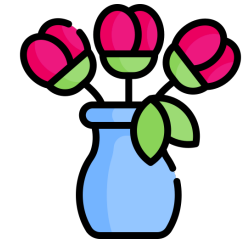


Grasshopper Word

Grasshopper Definitions

cage

A *** is a jar, usually made of glass or pottery, used for holding cut flowers or as an ornament.



vase

A *** is a strong container with one or two handles, used to carry things in.



screen

A *** is a flat piece of wood, metal, or glass which is attached to a wall or to the sides of a cupboard. *** are used for keeping things on.



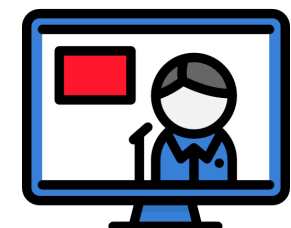
bag

A *** is a structure of wire or metal bars in which birds or animals are kept.



shelf

A *** is a flat vertical surface on which pictures or words are shown. Television sets and computers have ***, and films are shown on a *** in cinemas.



Matching Meanings

Draw lines from the **Shinobi** words to their definitions.

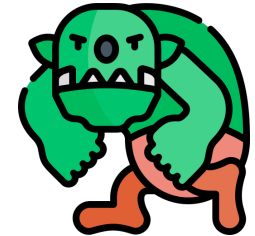


Shinobi Word

Shinobi Definitions

supply

If you say that someone or something is ***, you mean that they are very ugly or unattractive.



hideous

If things ***, they are different from each other in size, amount, or degree.



flaunt

If something *** you, you feel great admiration for it.



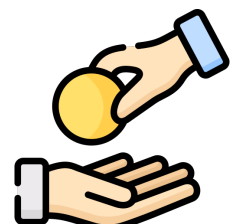
vary

If you say that someone *** their possessions, abilities, or qualities, you mean that they display them in a very obvious way, especially in order to try to obtain other people's admiration.



impress

If you *** someone with something that they want or need, you give them a quantity of it.





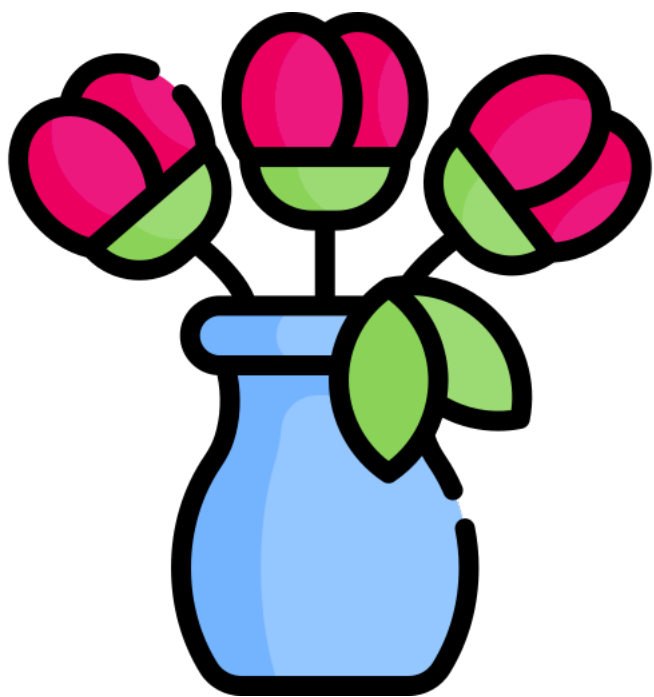
Display Slips

The following slides are for classroom display. As you teach each Word of the Day, words can be displayed in the classroom to enable pupils to use the taught vocabulary in an independent manner.





cage

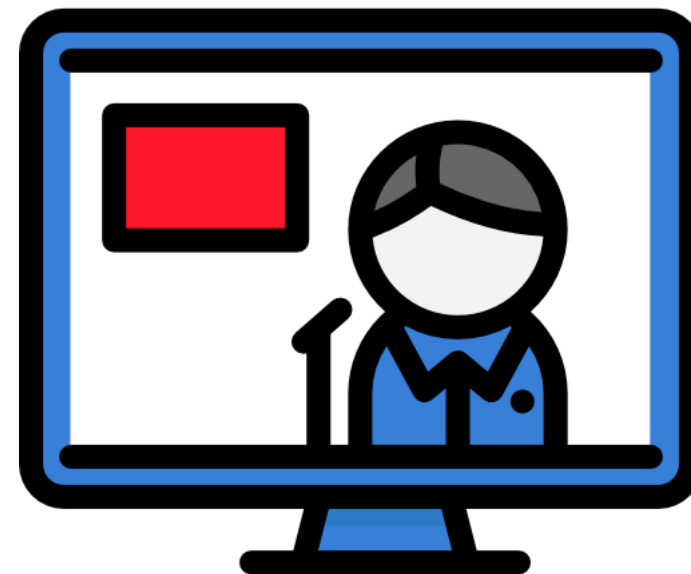


vase





screen



bag





shelf

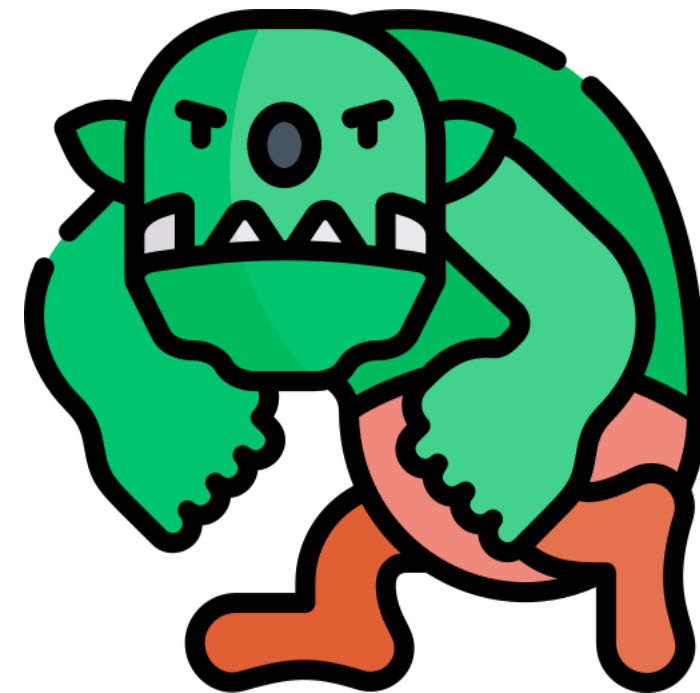


supply





hideous

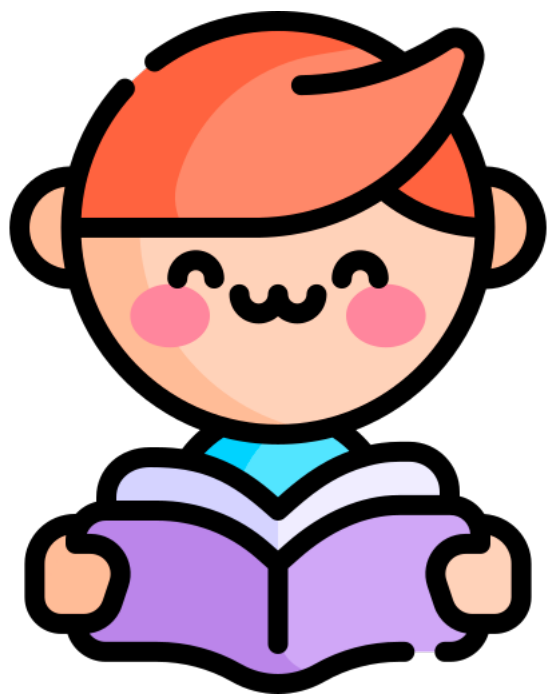


flaunt





vary



impress

