

Word of the Day

Summer Term 2023

Week 29 – 1st May 2023



This Week's Words

Grasshopper

tear
office
spare
chipped
lift

Shinobi

tolerate
mutter
fixation
unveil

VN VOCABULARY

Grasshopper Word of the Day

Word of the Day: picnic
(pic-nic)

Word Class: (verb / noun)

Definition: If you tear paper, cloth, or another material, or if it tears, you pull it into two pieces or you pull it so that a hole appears in it.

Phrases:

Synonym: word
word

Antonym: word
word

Rhyme: word
word

Link Word: word
word

Phrase Number One

Phrase Number Two

The was a hole in Freddie's new school picnic.

Shinobi Word of the Day

Word of the Day: tear
(tear)

Word Class: (verb / noun)

Definition: If you tear paper, cloth, or another material, or if it tears, you pull it into two pieces or you pull it so that a hole appears in it.

Phrases:

Synonym: word
word

Antonym: word
word

Prefix / Suffix: word
word

Link Word: word
word

Phrase Number One

Phrase Number Two

The was a tear in Freddie's new school book.

'Words unlock the doors to a world of understanding...'

This Week's Words

Grasshopper

fix

dark

across

bring

duo

Shinobi

inspect

limited

languish

meddle

conversation



VOCABULARY NINJA

Grasshopper (Tier 1)

fix

dark

across

bring

duo



VOCABULARY NINJA

Shinobi (Tier 2)

inspect

limited

languish

meddle

conversation



VOCABULARY NINJA



Grasshopper Word of the Day

Word of the Day:

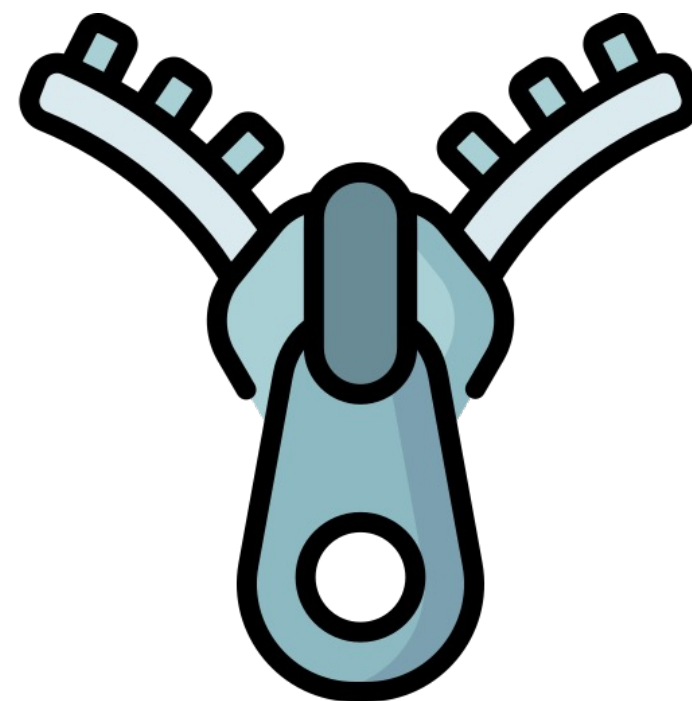
Pronunciation / Syllables

Definition:

If you fix something which is damaged or which does not work properly, you repair it.

fix
(fix)

Word Class
(verb / noun)



Jenny **fixed** the zip on her coat.

Synonym:

repair
mend

Antonym:

break
damage

Rhyme:

mix
sticks

Link Word:

machine
computer



Grasshopper Word of the Day

Word of the Day:

Pronunciation / Syllables

dark
(*dark*)

Word Class
(adjective / noun)

Definition:

When it is dark, there is not enough light to see properly, for example because it is night.



The classroom was still **dark** when Raj arrived.

Synonym:

dim

dusky

Antonym:

bright

Rhyme:

park

mark

Link Word:

room

cupboard



Grasshopper Word of the Day

Word of the Day:

Pronunciation / Syllables

across
(a-cross)

Word Class
(preposition)

Definition:

If someone or something goes across a place or a boundary, they go from one side of it to the other.



Freddie ran quickly **across** the playground.

Synonym:

over

Antonym:

Rhyme:

loss
cross

Link Word:

bridge
road



Grasshopper Word of the Day

Word of the Day:

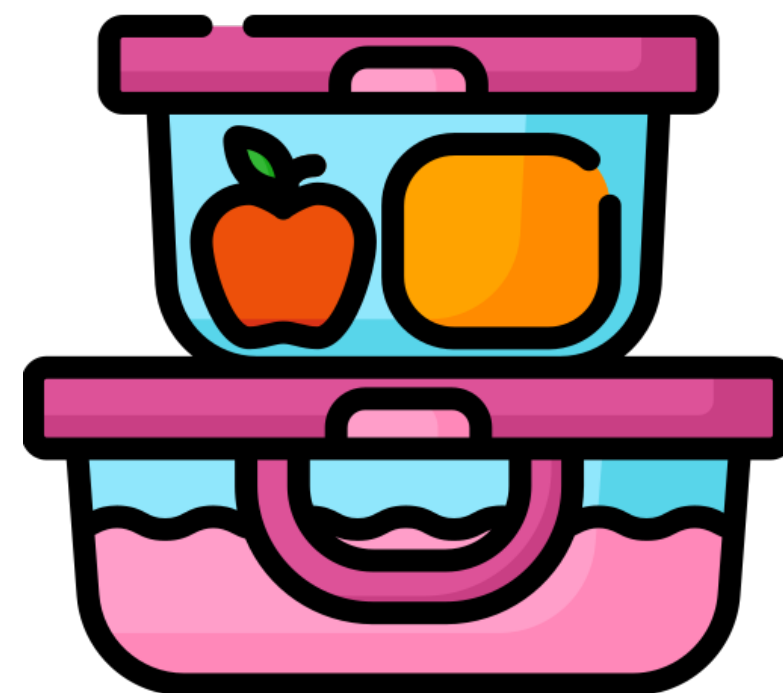
Pronunciation / Syllables

bring
(bring)

Word Class
(verb)

Definition:

If you bring someone or something with you when you come to a place, they come with you or you have them with you.



Courtney forgot to **bring** her lunch box.

Synonym:

carry

take

Antonym:

Rhyme:

thing

swing

Link Word:

food

friend



Grasshopper Word of the Day

Word of the Day:

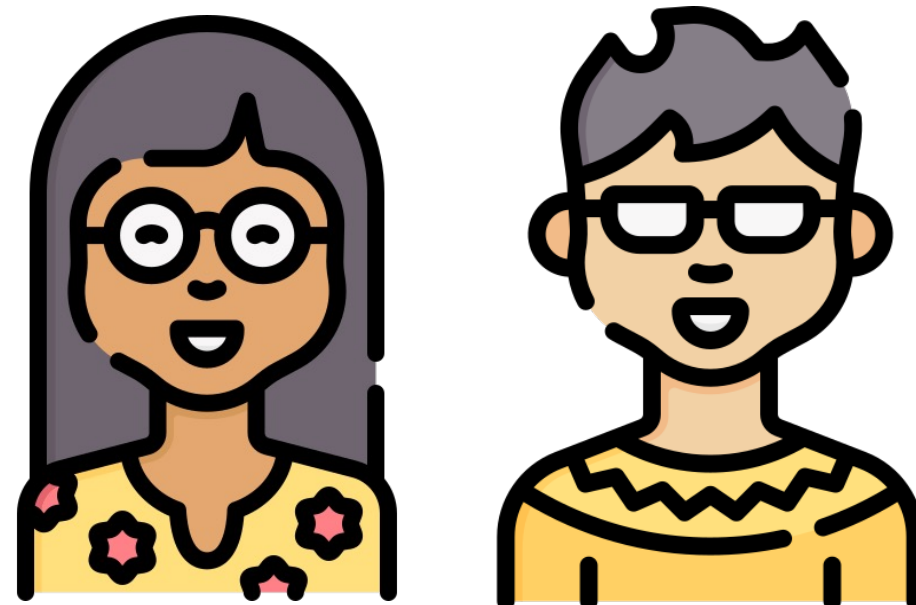
Pronunciation / Syllables

duo
(*du-o*)

Word Class
(noun)

Definition:

You can refer to two people together as a duo, especially when they have something in common.



The funny **duo** of Mia and Aki performed for the class.

Synonym:

Antonym:

Rhyme:

Link Word:

singing

funny



Shinobi Word of the Day

Word Class
(verb)

Word of the Day:

inspect
(in-spect)

Pronunciation / Syllables

Definition:

If you inspect something, you look at every part of it carefully in order to find out about it or check that it is all right.



Mr Harding **inspected** our handwriting.

Synonym:

scrutinise

examine

Antonym:

Prefix / Suffix:

-tion

re-

Rhyme:

respect

reflect

Link Word:

carefully

properly



Shinobi Word of the Day

Word of the Day:

limited
(lim-it-ed)

Word Class
(adjective)

Pronunciation / Syllables

Definition:

Something that is limited is not very great in amount, range, or degree.



We were **limited** to one glue stick per table.

Synonym:

restricted

finite

Antonym:

ample

unlimited

Prefix / Suffix:

un-

Rhyme:

prohibited

visited

Link Word:

supply

amounts



Shinobi Word of the Day

Word of the Day:

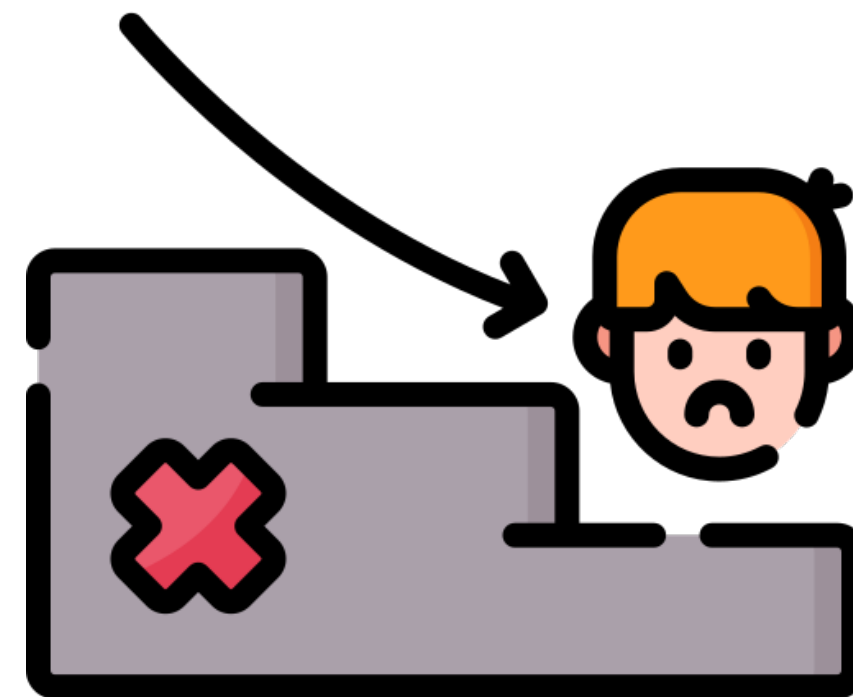
languish
(lan-guish)

Word Class
(verb)

Pronunciation / Syllables

Definition:

If someone languishes somewhere, they are forced to remain and suffer in an unpleasant situation.



The rugby team **languished** at the bottom of the league.

Synonym:

rot
suffer

Antonym:

Prefix / Suffix:

-ing
-ed

Rhyme:

anguish
vanquish

Link Word:

alone
in fear



Shinobi Word of the Day

Word of the Day:

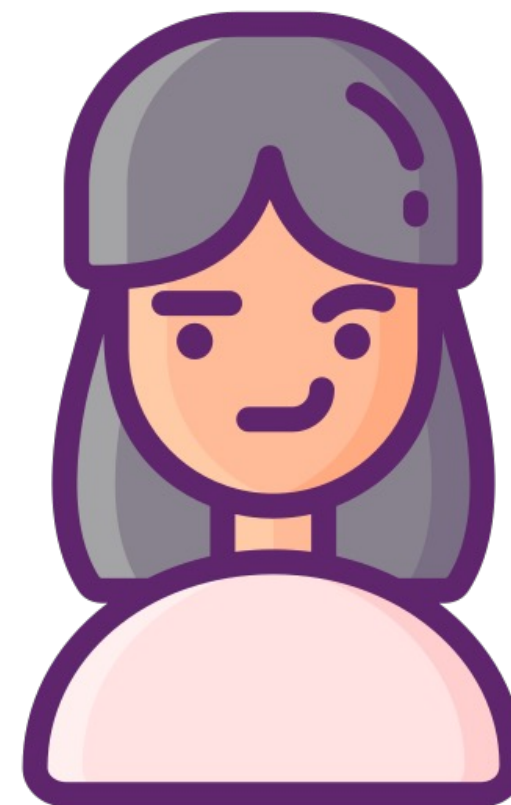
meddle
(*med-dle*)

Word Class
(verb)

Pronunciation / Syllables

Definition:

If you say that someone meddles in something, you are criticizing the fact that they try to influence or change it without being asked.



Anne was always **meddling** in everyone's business.

Synonym:

interfere

pry

Antonym:

Prefix / Suffix:

-some

-ing

Rhyme:

peddle

medal

Link Word:

with

equipment



Shinobi Word of the Day

Word Class

Word of the Day: **conversation** (noun)

Pronunciation / Syllables

(con-ver-sa-tion)

Definition:

If you have a conversation with someone, you talk with them, usually in an informal situation.



Carl and Jabari were deep in **conversation**.

Synonym:

discussion

chinwag

Antonym:

Prefix / Suffix

-al

-s

Rhyme:

information

education

Link Word:

fun

friendly

Vocabulary Laboratory



Describe / Definition:

Use it in a sentence:

Focus Word (write below):

Word Class:

Synonyms:

(words with same / similar meaning)

Antonyms:

(words with opposite meaning)

Draw your sentence:

Rhymes:

(words that sound the same)

Link Words:

(Example: football = pitch, team, player)

Vocabulary Visualiser

Draw the
Grasshopper words
and bring them to life.



Word: fix

Word: dark

Word: across

Word: duo



Vocabulary Visualiser

Draw the **Shinobi**
words and bring
them to life.



Word: inspect

Word: limited

Word: meddle

Word: conversation



Matching Meanings

Draw lines from the **Grasshopper** words to their definitions.



Grasshopper Word

Grasshopper Definitions

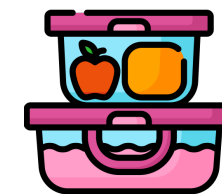
fix

When it is ***, there is not enough light to see properly, for example because it is night.



dark

If you *** someone or something with you when you come to a place, they come with you or you have them with you.



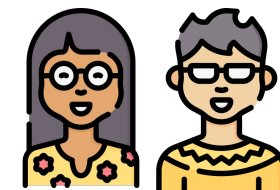
across

If you *** something which is damaged or which does not work properly, you repair it.



bring

You can refer to two people together as a ***, especially when they have something in common.



duo

If someone or something goes *** a place or a boundary, they go from one side of it to the other.



Matching Meanings

Draw lines from the **Shinobi** words to their definitions.

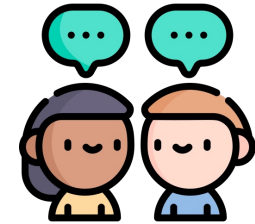


Shinobi Word

Shinobi Definitions

inspect

If you have a *** with someone, you talk with them, usually in an informal situation.



limited

If you *** something, you look at every part of it carefully in order to find out about it or check that it is all right.



languish

If you say that someone *** in something, you are criticizing the fact that they try to influence or change it without being asked.



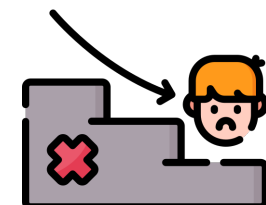
meddle

Something that is *** is not very great in amount, range, or degree.



conversation

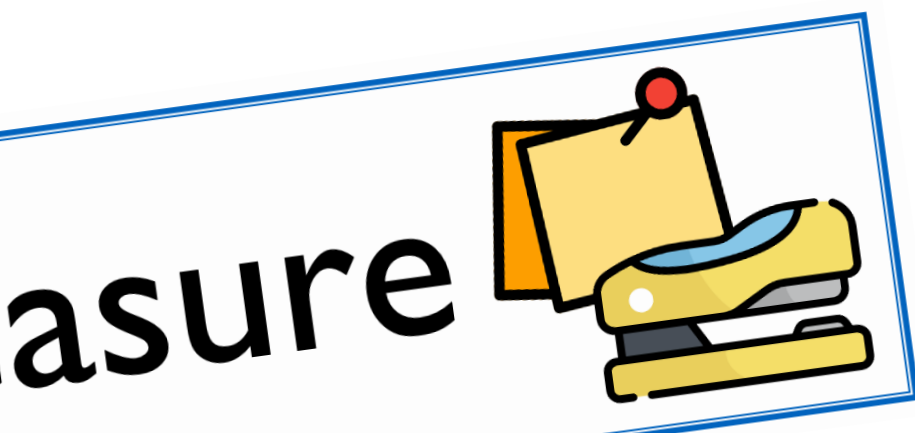
If someone *** somewhere, they are forced to remain and suffer in an unpleasant situation.





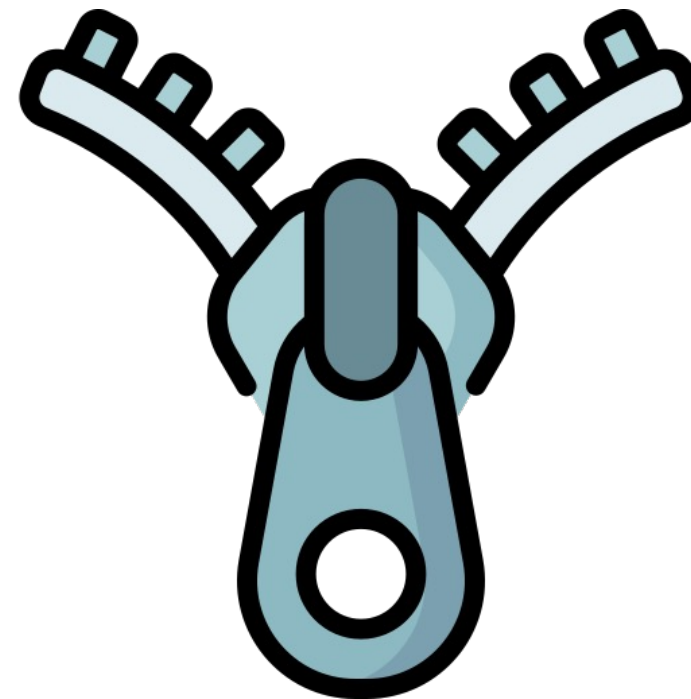
Display Slips

The following slides are for classroom display. As you teach each Word of the Day, words can be displayed in the classroom to enable pupils to use the taught vocabulary in an independent manner.





fix



dark





across

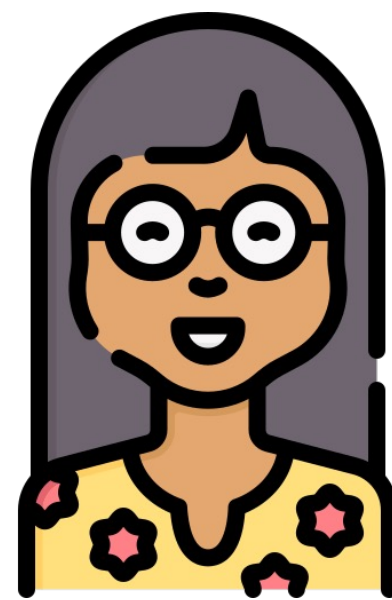


bring





duo

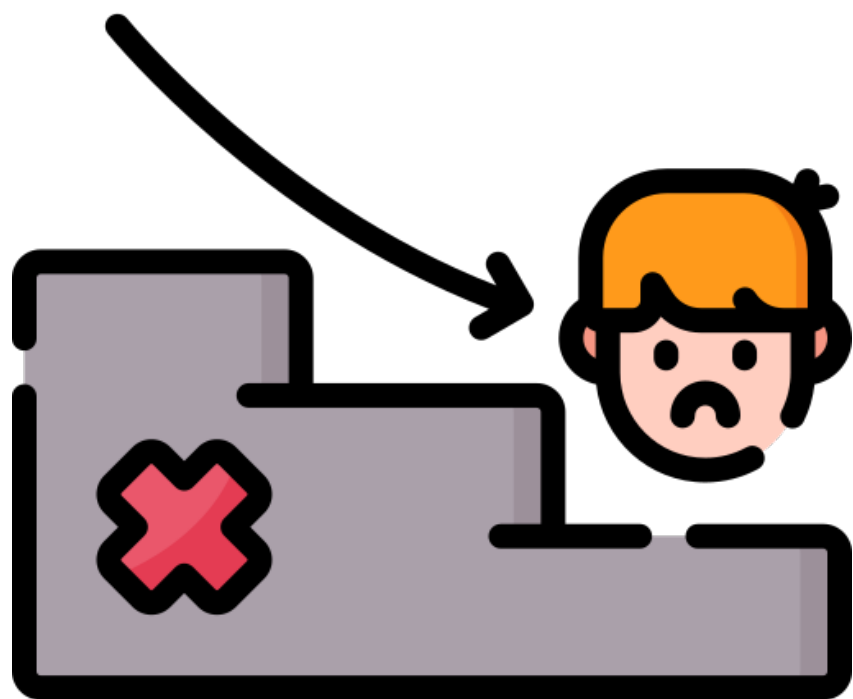
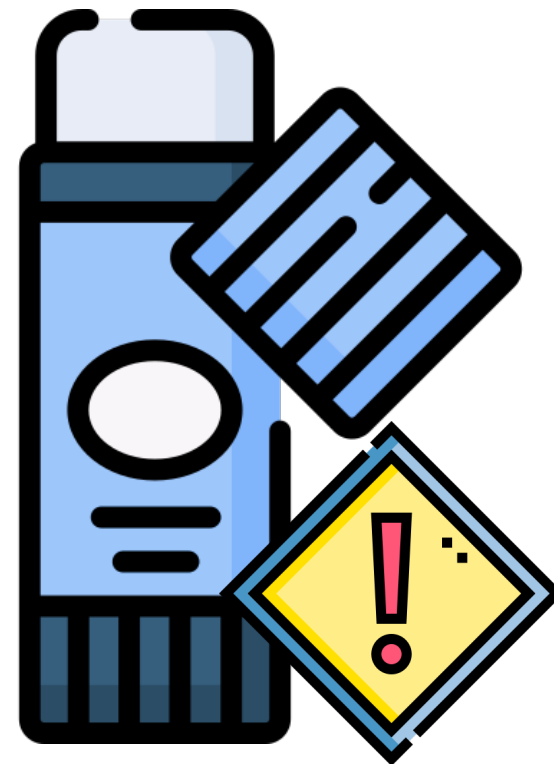


inspect





limited

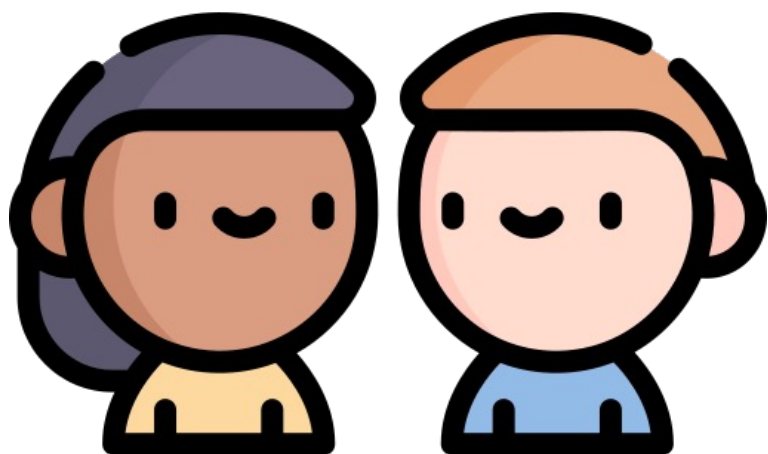
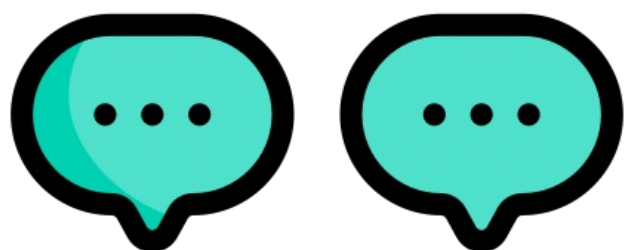
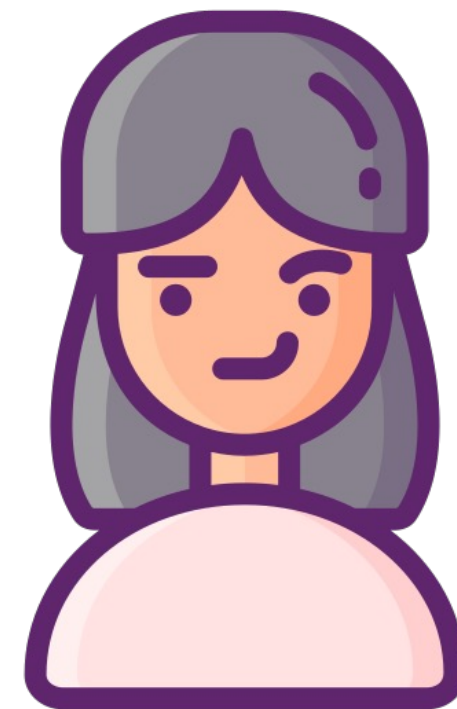


languish





meddle



conversation

