

# Word of the Day

## Spring Term 2023

### Week 16 – 9th January 2023



### This Week's Words

**Grasshopper**

tear  
office  
spare  
chipped  
lift

**Shinobi**

tolerate  
mutter  
fixation  
unveil

**VN VOCABULARY**

### Grasshopper Word of the Day

**Word of the Day:** picnic  
*(pic-nic)*

**Word Class:** (verb / noun)

**Definition:** If you tear paper, cloth, or another material, or if it tears, you pull it into two pieces or you pull it so that a hole appears in it.

**Phrases:**

**Synonym:** word  
word

**Antonym:** word  
word

**Rhyme:** word  
word

**Link Word:** word  
word

**Phrase Number One:** The was a hole in Freddie's new school picnic.

**Phrase Number Two:**

**Illustration:** A picnic basket with a red apple and a sandwich.

### Shinobi Word of the Day

**Word of the Day:** tear  
*(tear)*

**Word Class:** (verb / noun)

**Definition:** If you tear paper, cloth, or another material, or if it tears, you pull it into two pieces or you pull it so that a hole appears in it.

**Phrases:**

**Synonym:** word  
word

**Antonym:** word  
word

**Prefix / Suffix:** word  
word

**Link Word:** word  
word

**Phrase Number One:** The was a tear in Freddie's new school book.

**Phrase Number Two:**

**Illustration:** An open book with a tear in the paper.

**'Words unlock the doors to a world of understanding...'**

# This Week's Words

**Grasshopper**

**few**

**window**

**ask**

**help**

**straight**

**Shinobi**

**realise**

**purpose**

**cluster**

**function**

**property**



**VOCABULARY NINJA**

# Grasshopper (Tier 1)

**few**

**window**

**ask**

**help**

**straight**



**VOCABULARY NINJA**

# Shinobi (Tier 2)

**realise**

**purpose**

**cluster**

**function**

**property**



**VOCABULARY NINJA**



# Grasshopper Word of the Day

Word of the Day:

Pronunciation / Syllables

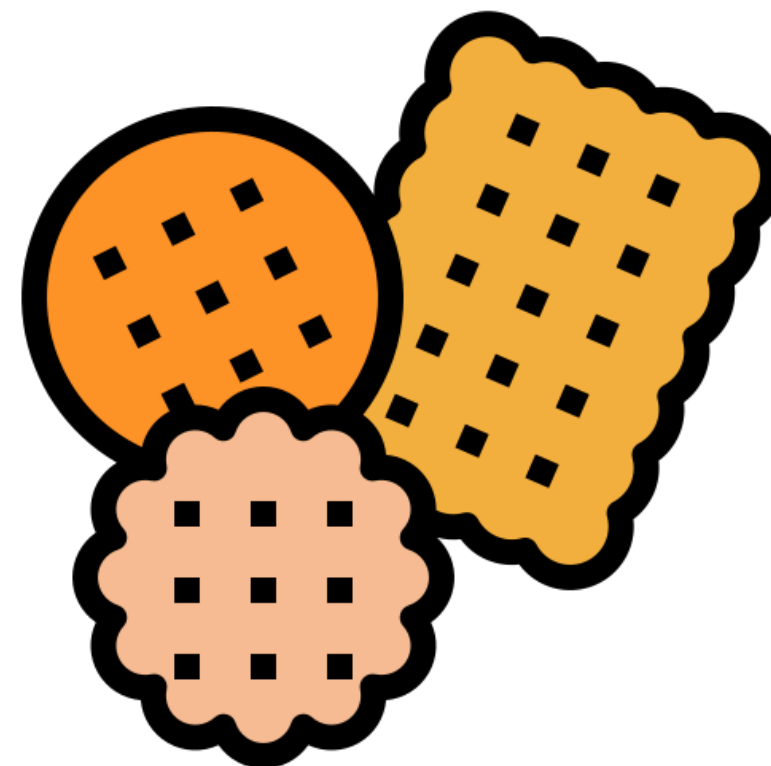
few  
(few)

Word Class

(adjective / determiner)

Definition:

You use few to indicate that you are talking about a small number of people or things.



Mrs Phillips promised to only eat a **few** biscuits today.

Synonym:

one or two

a handful

Antonym:

many

Rhyme:

who

new

Link Word:

minutes

people



# Grasshopper Word of the Day

Word of the Day:

**window**  
(win-dow)

Word Class  
(noun)

Pronunciation / Syllables

## Definition:

A window is a space in the wall of a building or in the side of a vehicle, which has glass in it so that light can come in and you can see out.



Jim just stared out of the **window** all day long.

Synonym:

opening

Antonym:

Rhyme:

Link Word:

daydream

view



# Grasshopper Word of the Day

Word of the Day:

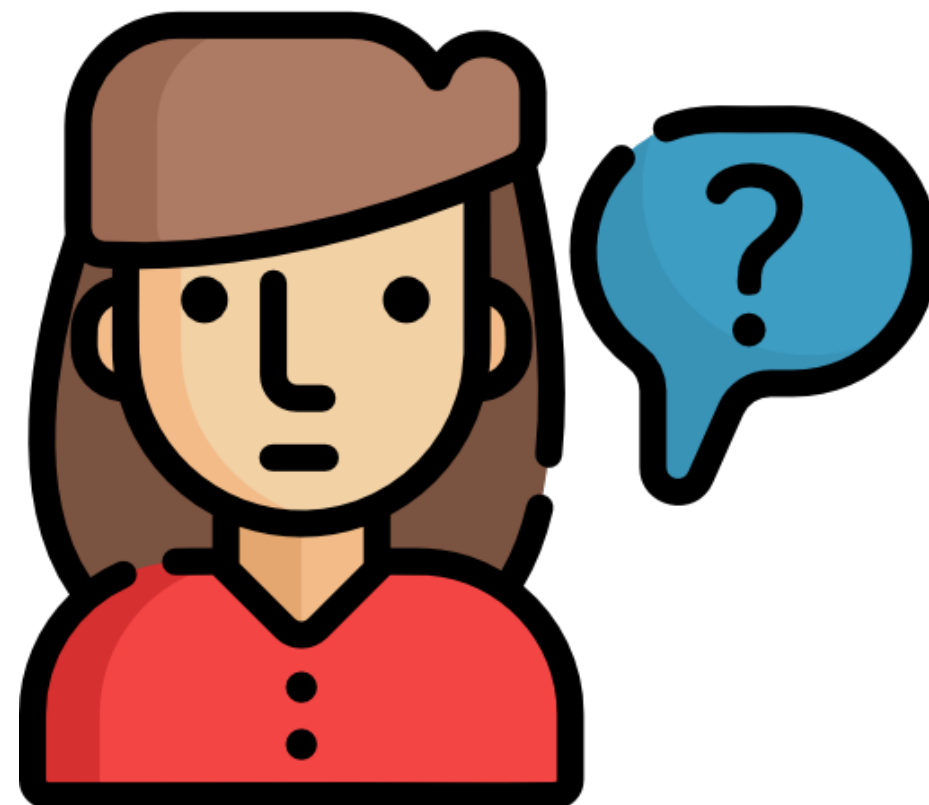
Pronunciation / Syllables

ask  
(ask)

Word Class  
(verb)

Definition:

If you ask someone something, you say something to them in the form of a question because you want to know the answer.



Marley **asked** the teacher if it was lunchtime yet.

Synonym:

question

grill

Antonym:

answer

Rhyme:

task

mask

Link Word:

teacher

question



# Grasshopper Word of the Day

Word of the Day:

Pronunciation / Syllables

help  
(help)

Word Class  
(verb / noun)

Definition:

If you help someone, you make it easier for them to do something, for example by doing part of the work for them or by giving them advice or money.



Our teachers always **help** us with our learning.

Synonym:

assist

aid

Antonym:

hinder

Rhyme:

yelp

kelp

Link Word:

learn

figure out





# Grasshopper Word of the Day

Word of the Day:

Pronunciation / Syllables

straight  
(*straight*)

Word Class  
(adjective)

Definition:

A straight line or edge continues in the same direction and does not bend or curve.



Class 6 stood in a **straight** line, waiting for Mrs White.

Synonym:

direct

Antonym:

winding

bending

Rhyme:

eight

late

Link Word:

line

forward



# Shinobi Word of the Day

Word of the Day:

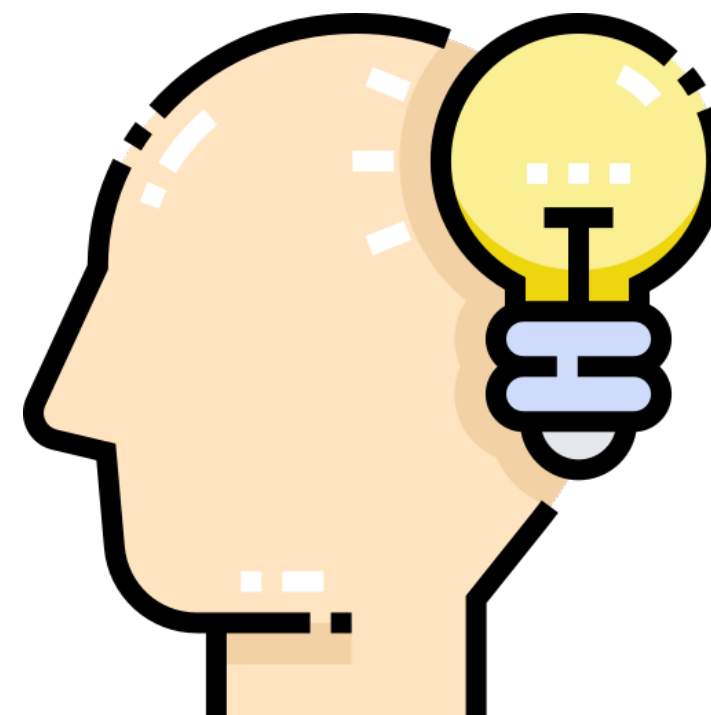
Pronunciation / Syllables

realise  
(re-al-ise)

Word Class  
(verb)

## Definition:

If you realise that something is true, you become aware of that fact or understand it.



Jenny **realised** she had forgotten to do her homework.

Synonym:

notice

ascertain

Antonym:

Prefix / Suffix:

-ation

-ed

Rhyme:

Link Word:

forgot

remember



# Shinobi Word of the Day

Word Class  
(noun)

Word of the Day:

purpose  
(*pur-~~p~~ose*)

Pronunciation / Syllables

Definition:

The purpose of something is the reason for which it is made or done.



The **purpose** of reading the book was to learn more.

Synonym:

motive  
reasons

Antonym:

Prefix / Suffix:

-ful  
multi-

Rhyme:

Link Word:

help  
support



# Shinobi Word of the Day

Word of the Day:

cluster  
(clus-ter)

Word Class  
(noun)

Pronunciation / Syllables

Definition:

A cluster of people or things is a small group of them close together.



A **cluster** of children waited patiently for the headteacher.

Synonym:

bunch  
clump

Antonym:

Prefix / Suffix:

super-

Rhyme:

muster  
buster

Link Word:

people  
weeds



# Shinobi Word of the Day

Word of the Day:

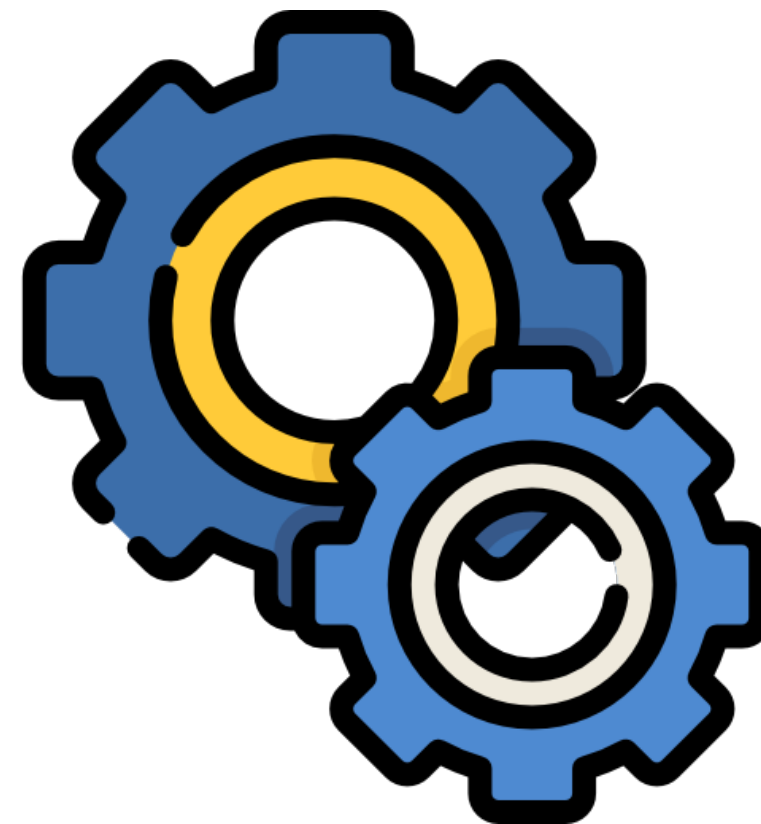
**function**  
(*func-tion*)

Word Class  
(noun)

Pronunciation / Syllables

## Definition:

The function of something or someone is the useful thing that they do or are intended to do.



The teacher's **function** was to ensure everyone was happy.

Synonym:

use  
reason

Antonym:

Prefix / Suffix:

dys-  
mal-

Rhyme:

conjunction  
junction

Link Word:

properly  
broken



# Shinobi Word of the Day

Word Class  
(noun)

Word of the Day:

property  
(prop-er-ty)

Pronunciation / Syllables

Definition:

Someone's property is all the things that belong to them or something that belongs to them.



The orange coat was the **property** of Mia.

Synonym:

possession

belonging

Antonym:

Prefix / Suffix

-less

Rhyme:

Link Word:

person's

my

# Vocabulary Laboratory



**Describe / Definition:**

**Use it in a sentence:**

**Focus Word** (write below):

**Word Class:**

**Synonyms:**

(words with same / similar meaning)

**Antonyms:**

(words with opposite meaning)

**Draw your sentence:**

**Rhymes:**

(words that sound the same)

**Link Words:**

(Example: football = pitch, team, player)

# Vocabulary Visualiser

Draw the  
**Grasshopper** words  
and bring them to life.



Word: few

Word: window

Word: ask

Word: help





# Vocabulary Visualiser

Draw the **Shinobi**  
words and bring  
them to life.



Word: realise

Word: cluster

Word: purpose

Word: property



# Matching Meanings

Draw lines from the **Grasshopper** words to their definitions.

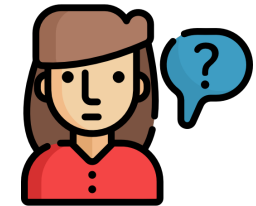


## Grasshopper Word

## Grasshopper Definitions

few

If you \*\*\* someone something, you say something to them in the form of a question because you want to know the answer.



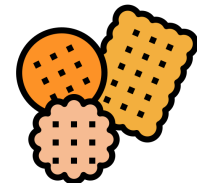
window

If you \*\*\* someone, you make it easier for them to do something, for example by doing part of the work for them or by giving them advice or money.



ask

You use \*\*\* to indicate that you are talking about a small number of people or things.



help

A \*\*\* line or edge continues in the same direction and does not bend or curve.



straight

A \*\*\* is a space in the wall of a building or in the side of a vehicle, which has glass in it so that light can come in and you can see out.



# Matching Meanings

Draw lines from the **Shinobi** words to their definitions.



## Shinobi Word

## Shinobi Definitions

realise

A \*\*\* of people or things is a small group of them close together.



purpose

If you \*\*\* that something is true, you become aware of that fact or understand it.



cluster

Someone's \*\*\* is all the things that belong to them or something that belongs to them.



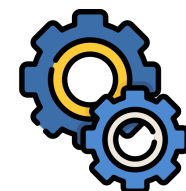
function

The \*\*\* of something is the reason for which it is made or done.



property

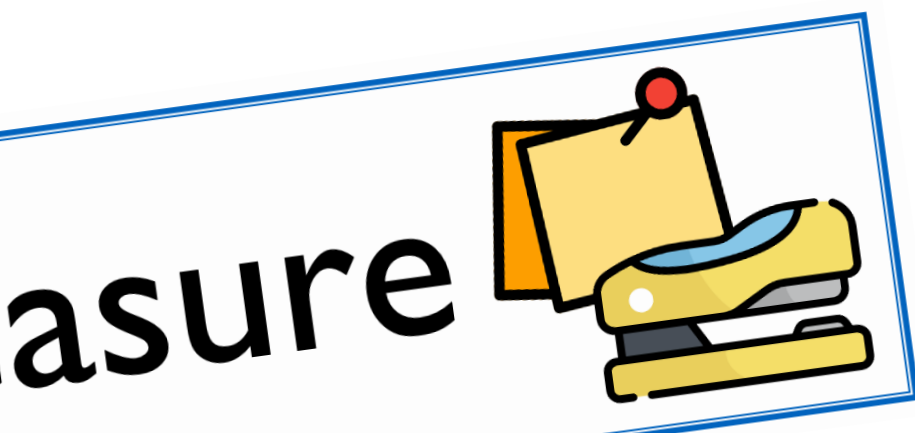
The \*\*\* of something or someone is the useful thing that they do or are intended to do.





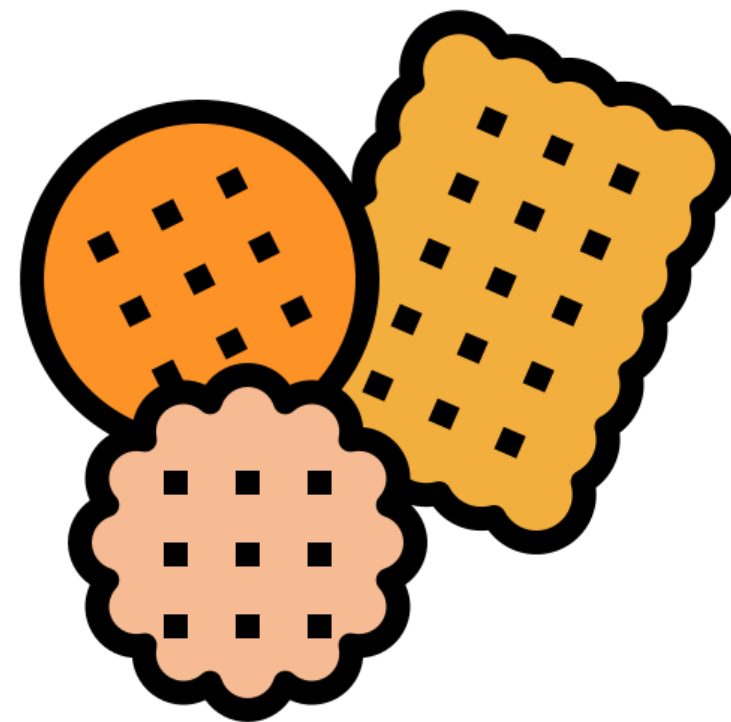
# Display Slips

The following slides are for classroom display. As you teach each Word of the Day, words can be displayed in the classroom to enable pupils to use the taught vocabulary in an independent manner.





few

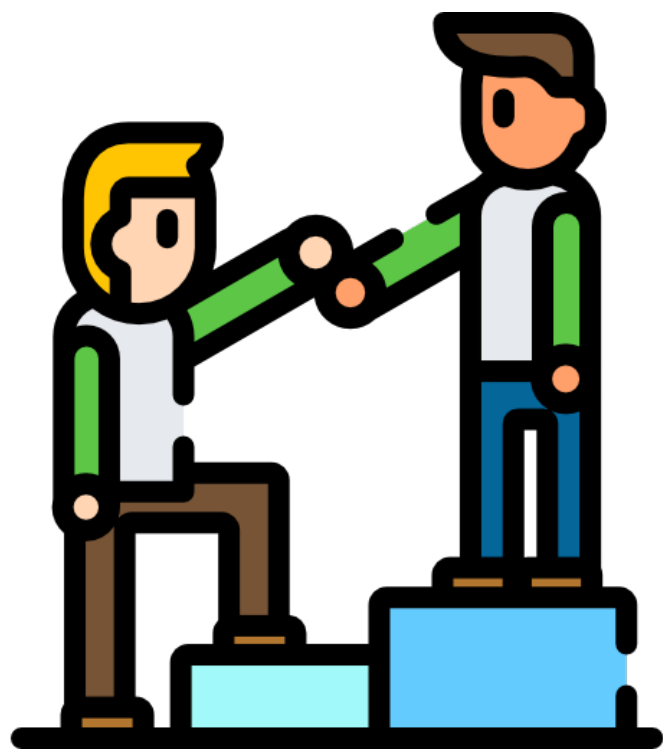
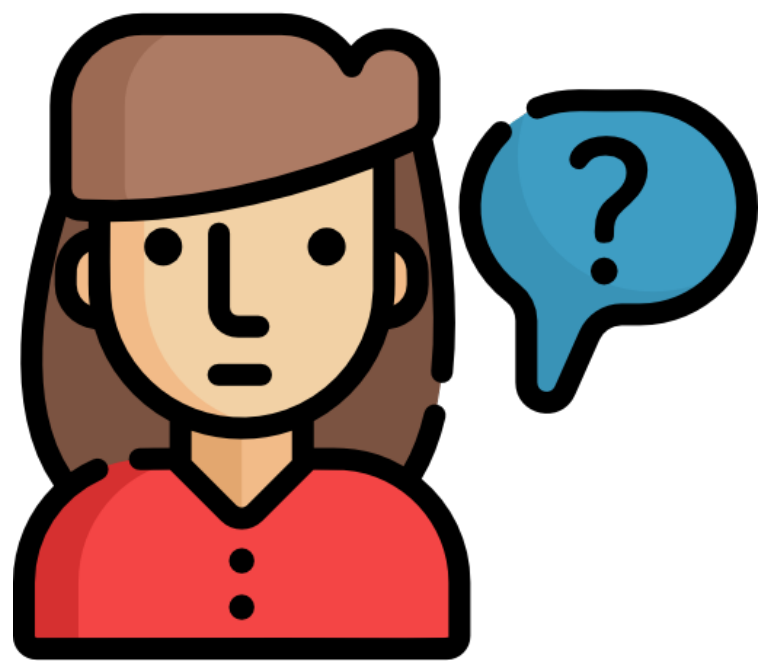


window





# ask

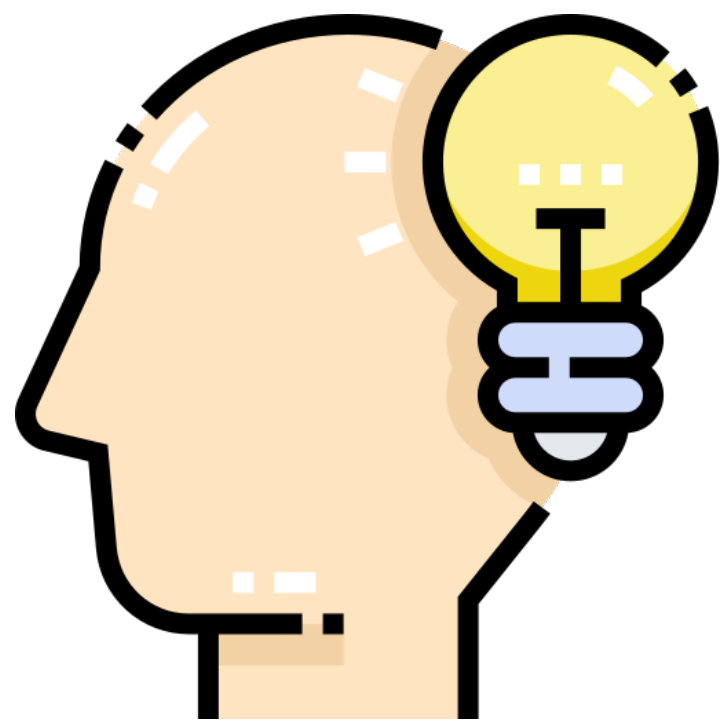


# help





# straight



# realise





# purpose



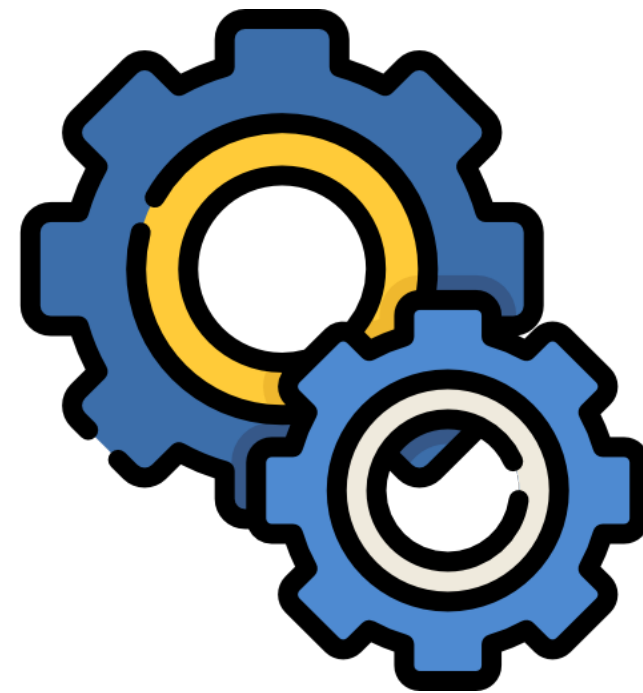
# cluster







# function



# property

