

Word of the Day

Autumn Term 2022

Week 13 – 5th December 2022



This Week's Words

Grasshopper

- tear
- office
- spare
- chipped
- lift

Shinobi

- tolerate
- mutter
- fixation
- unveil

VN VOCABULARY

Grasshopper Word of the Day

Word of the Day: picnic
(pic-nic)

Word Class: (verb / noun)

Definition: If you tear paper, cloth, or another material, or if it tears, you pull it into two pieces or you pull it so that a hole appears in it.

Phrases:

Synonym: word
word

Antonym: word
word

Rhyme: word
word

Link Word: word
word

The was a hole in Freddie's new school picnic.

Shinobi Word of the Day

Word of the Day: tear
(tear)

Word Class: (verb / noun)

Definition: If you tear paper, cloth, or another material, or if it tears, you pull it into two pieces or you pull it so that a hole appears in it.

Phrases:

Synonym: word
word

Antonym: word
word

Prefix / Suffix: word
word

Link Word: word
word

The was a tear in Freddie's new school book.

'Words unlock the doors to a world of understanding...'

This Week's Words

Grasshopper

secret

path

gate

flower

insect

Shinobi

transparent

predict

contrast

previous

patience



VOCABULARY NINJA

Grasshopper (Tier 1)

secret

path

gate

flower

insect



VOCABULARY NINJA

Shinobi (Tier 2)

transparent

predict

contrast

previous

patience



VOCABULARY NINJA



Grasshopper Word of the Day

Word of the Day:

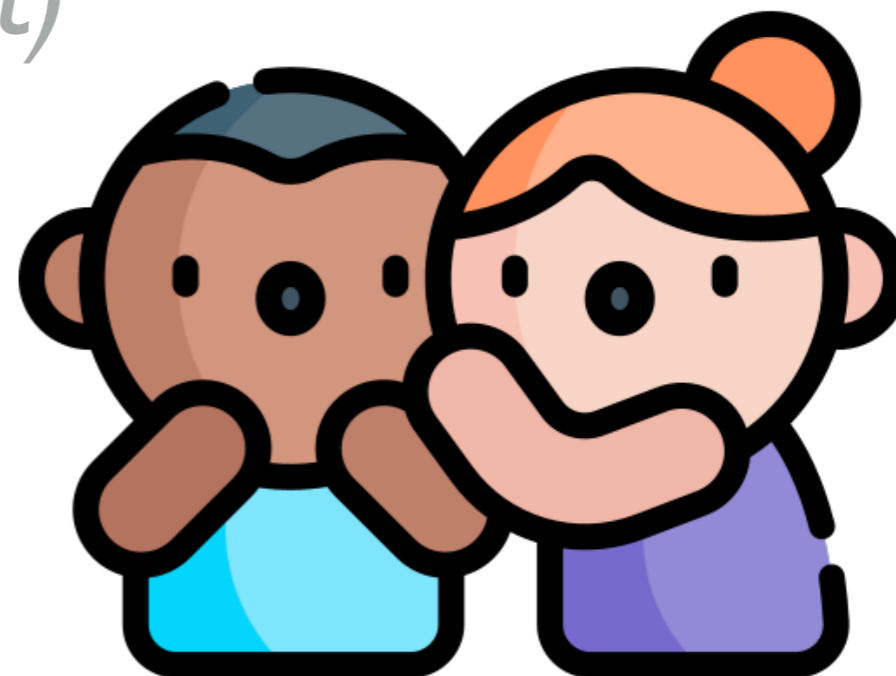
Pronunciation / Syllables

secret
(se-cret)

Word Class
(noun)

Definition:

A secret is a fact that is known by only a small number of people, and is not told to anyone else.



Alice told Freddie that it was a **secret**.

Synonym:

untold
unknown

Antonym:

known

Rhyme:

Link Word:

plan
code



Grasshopper Word of the Day

Word of the Day:

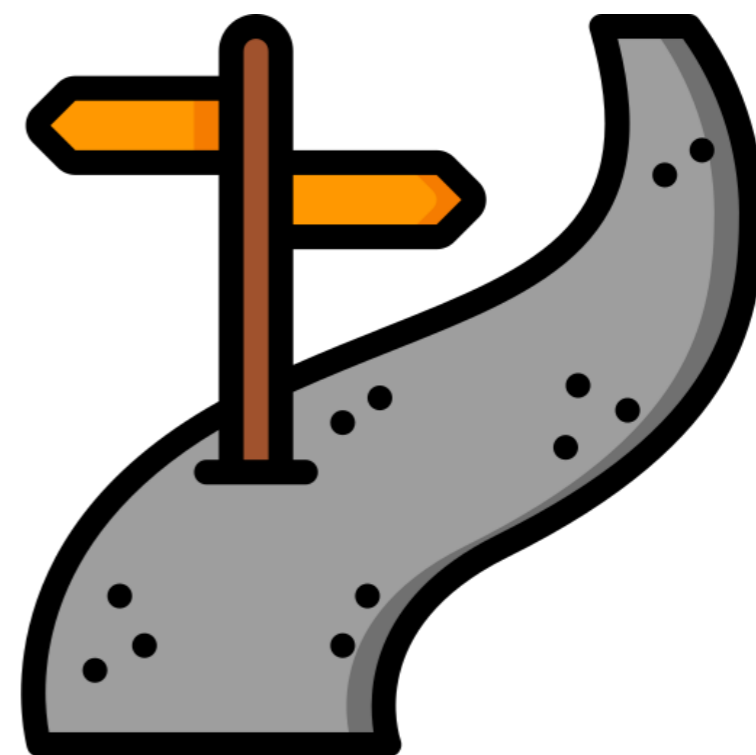
Pronunciation / Syllables

path
(*path*)

Word Class
(noun)

Definition:

A path is a long strip of ground which people walk along to get from one place to another.



We followed the **path** to the forest school garden.

Synonym:

track

trail

Antonym:

Rhyme:

bath

math

Link Word:

gravel

tarmac



Grasshopper Word of the Day

Word of the Day:

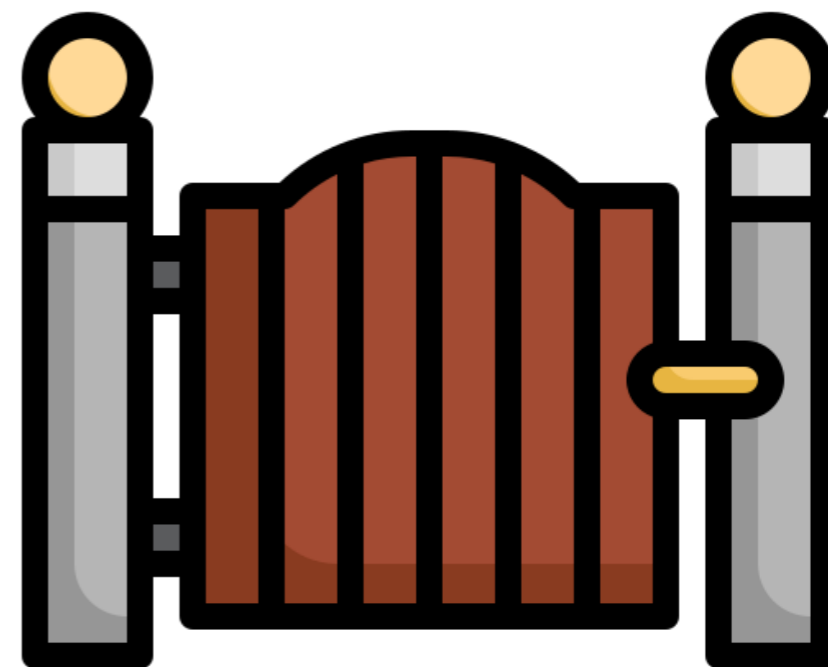
Pronunciation / Syllables

gate
(gate)

Word Class
(noun)

Definition:

A gate is a structure like a door which is used at the entrance to a field, a garden, or the grounds of a building.



The **gate** was locked and we needed a key to open it.

Synonym:

barrier

Antonym:

Rhyme:

fate

late

Link Word:

open

close



Grasshopper Word of the Day

Word of the Day:

flower
(flow-er)

Word Class
(noun / verb)

Pronunciation / Syllables

Definition:

A flower is the part of a plant which is often brightly coloured, grows at the end of a stem, and only survives for a short time.



There were no **flowers** growing during the colder months.

Synonym:

bloom

Antonym:

Rhyme:

power
shower

Link Word:

grow
brighten



Grasshopper Word of the Day

Word of the Day:

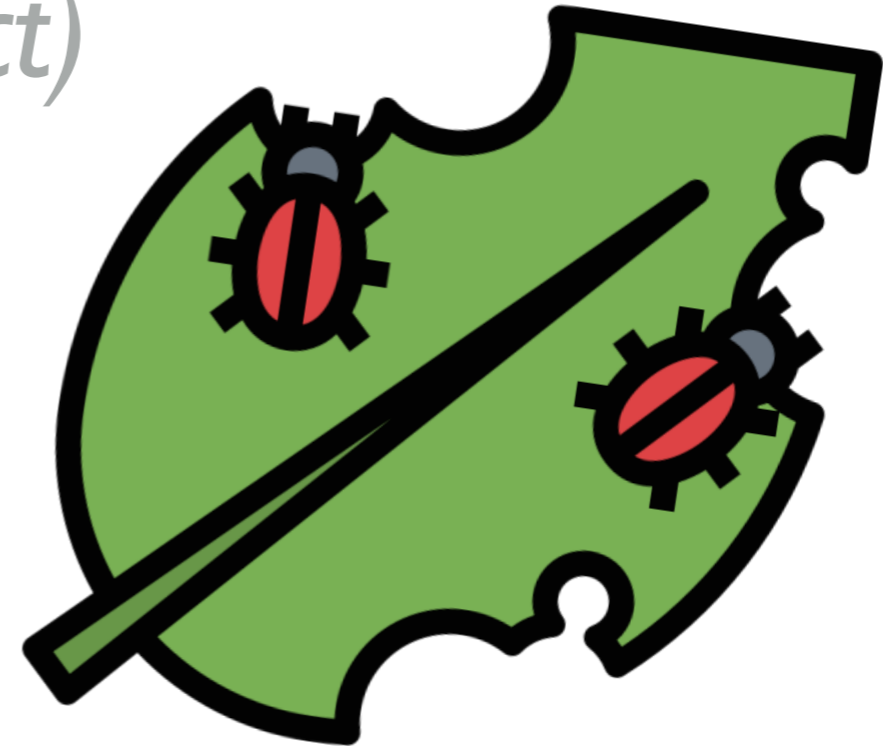
Pronunciation / Syllables

insect
(in-sect)

Word Class
(noun)

Definition:

An insect is a small animal that has six legs. Most insects have wings. Ants, flies, butterflies, and beetles are all insects.



We watched **insects** eating the juicy leaves.

Synonym:

Antonym:

Rhyme:

Link Word:

scurry

fly



Shinobi Word of the Day

Word of the Day: **transparent**

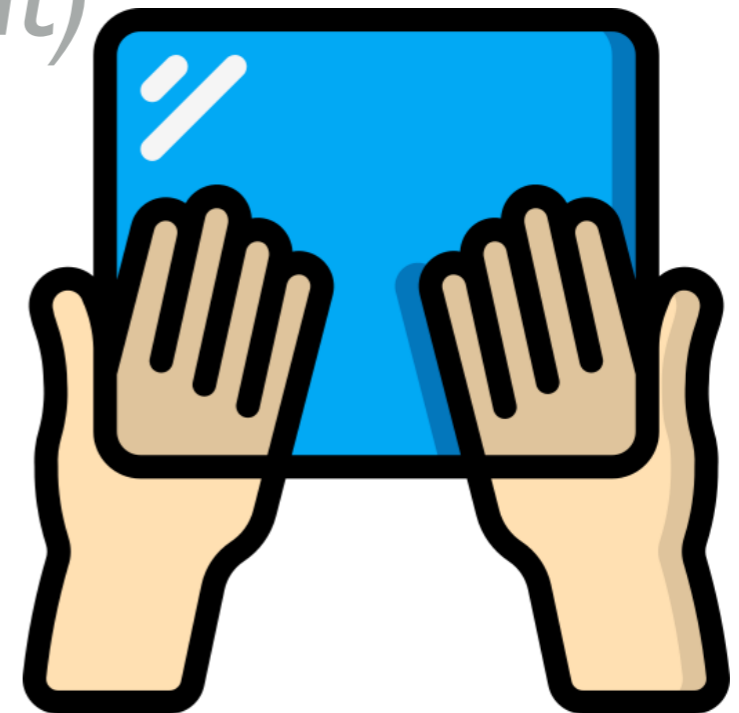
Word Class
(adjective)

Pronunciation / Syllables

(*trans-par-ent*)

Definition:

If an object or substance is transparent, you can see through it.



The objective of the lesson was **transparent** to everyone.

Synonym:

clear

obvious

Antonym:

obscure

ambiguous

Prefix / Suffix:

-rence

Rhyme:

apparent

parent

Link Word:

clarity

vision



Shinobi Word of the Day

Word of the Day:

Pronunciation / Syllables

predict
(*pre-dict*)

Word Class
(verb)

Definition:

If you predict something, you say that something will happen, usually based on information you already have.



Class 4 made **predictions** about what would happen next.

Synonym:

forecast

speculate

Antonym:

Prefix / Suffix:

-tion

-ed

Rhyme:

conflict

strict

Link Word:

future

next



Shinobi Word of the Day

Word of the Day:

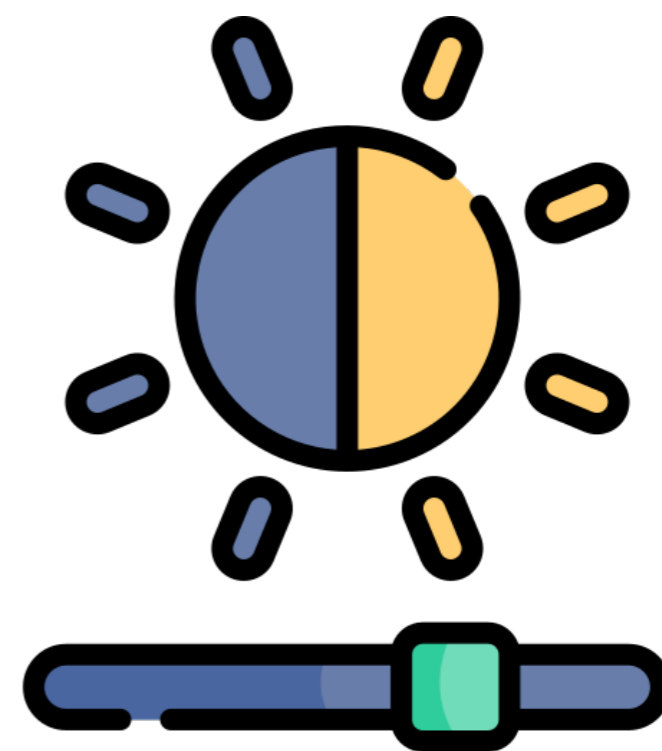
contrast
(*con-trast*)

Word Class
(noun / verb)

Pronunciation / Syllables

Definition:

If one thing is a contrast to another, it is very different from it.



There was a **contrast** in handwriting between classes.

Synonym:

difference

Antonym:

similarity

Prefix / Suffix:

-ing

-ed

Rhyme:

contract

Link Word:

between

levels



Shinobi Word of the Day

Word of the Day:

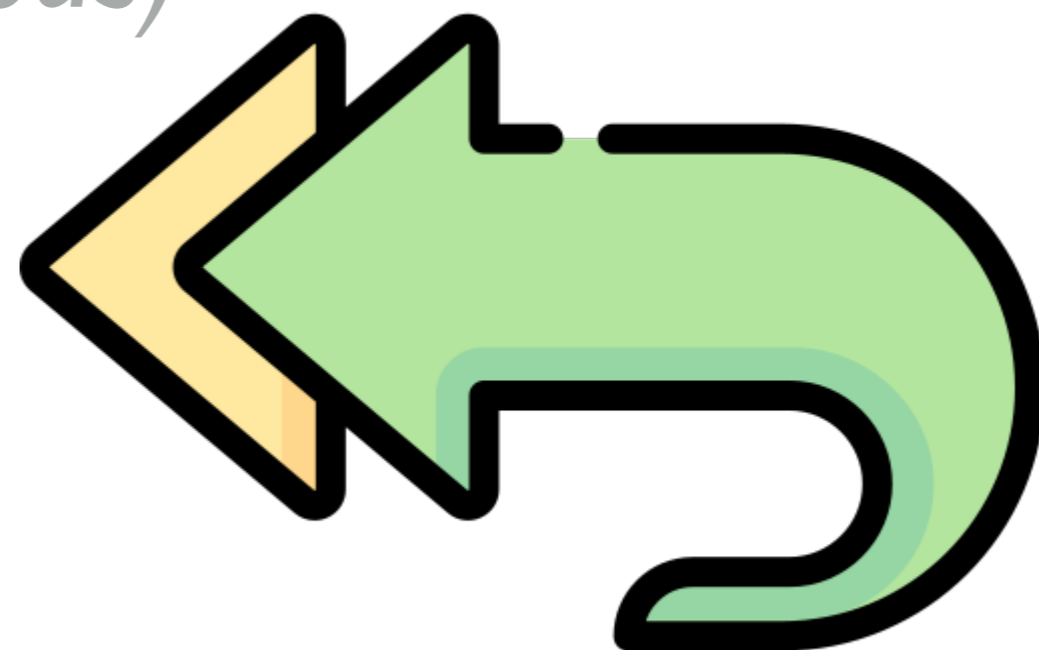
Pronunciation / Syllables

previous
(pre-vi-ous)

Word Class
(adjective)

Definition:

A previous event or thing is one that happened or existed before the one that you are talking about.



Mr Hinds used a **previous** example to show us what to do.

Synonym:

old
earlier

Antonym:

following
next

Prefix / Suffix:

-ly

Rhyme:

devious
tedious

Link Word:

example
person



Shinobi Word of the Day

Word of the Day:

Pronunciation / Syllables

patience
(pa-tience)

Word Class
(noun)

Definition:

If you have patience, you are able to stay calm and not get annoyed, for example when something takes a long time, or when someone is not doing what you want them to do.



We needed to show **patience** and wait for dessert to come.

Synonym:

tolerance

composure

Antonym:

impatience

Prefix / Suffix

im-

Rhyme:

impatience

Link Word:

show

time

Vocabulary Laboratory



Describe / Definition:

Use it in a sentence:

Focus Word (write below):

Word Class:

Synonyms:

(words with same / similar meaning)

Antonyms:

(words with opposite meaning)

Draw your sentence:

Rhymes:

(words that sound the same)

Link Words:

(Example: football = pitch, team, player)

Vocabulary Visualiser

Draw the
Grasshopper words
and bring them to life.



Word: secret

Word: path

Word: gate

Word: insect



Vocabulary Visualiser

Draw the **Shinobi**
words and bring
them to life.



Word: transparent

Word: predict

Word: contrast

Word: patience



Matching Meanings

Draw lines from the **Grasshopper** words to their definitions.



Grasshopper Word

Grasshopper Definitions

secret

A *** is a structure like a door which is used at the entrance to a field, a garden, or the grounds of a building.

Matching Meanings

Draw lines from the **Shinobi** words to their definitions.



Shinobi Word

Shinobi Definitions

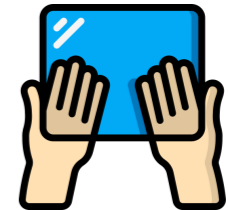
transparent

If you *** something, you say that something will happen, usually based on information you already have.



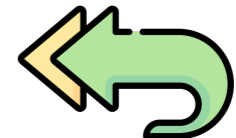
predict

If an object or substance is ***, you can see through it.



contrast

A *** event or thing is one that happened or existed before the one that you are talking about.



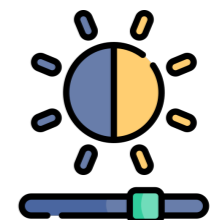
previous

If you have ***, you are able to stay calm and not get annoyed, for example when something takes a long time, or when someone is not doing what you want them to do.



patience

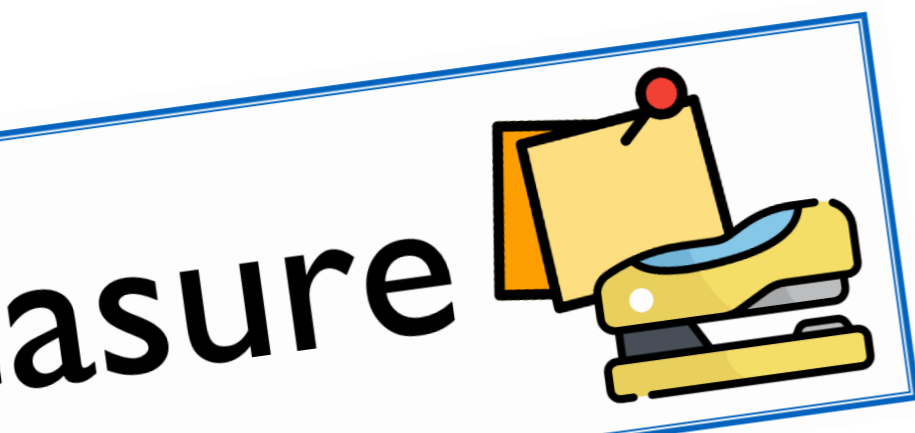
If one thing is a *** to another, it is very different from it.





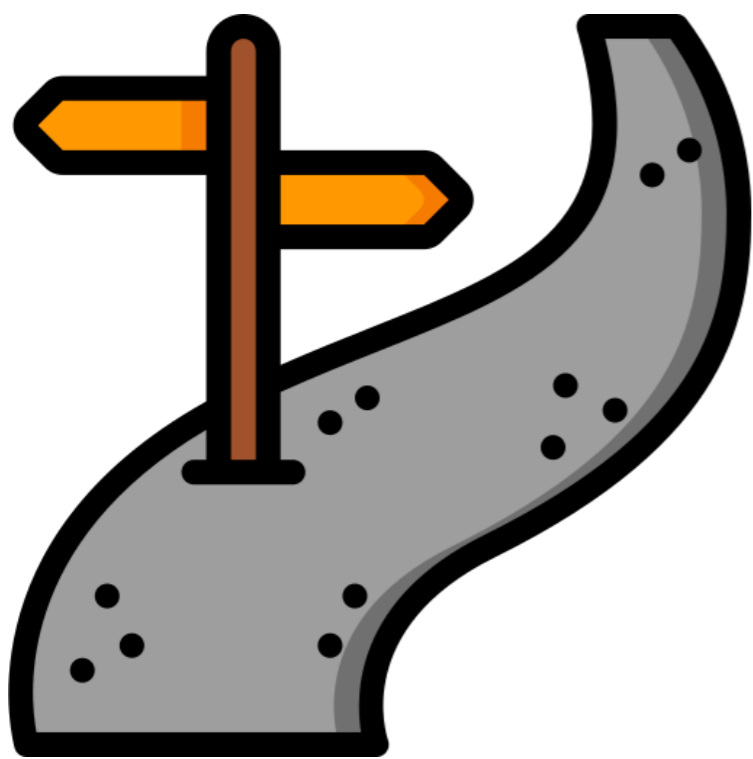
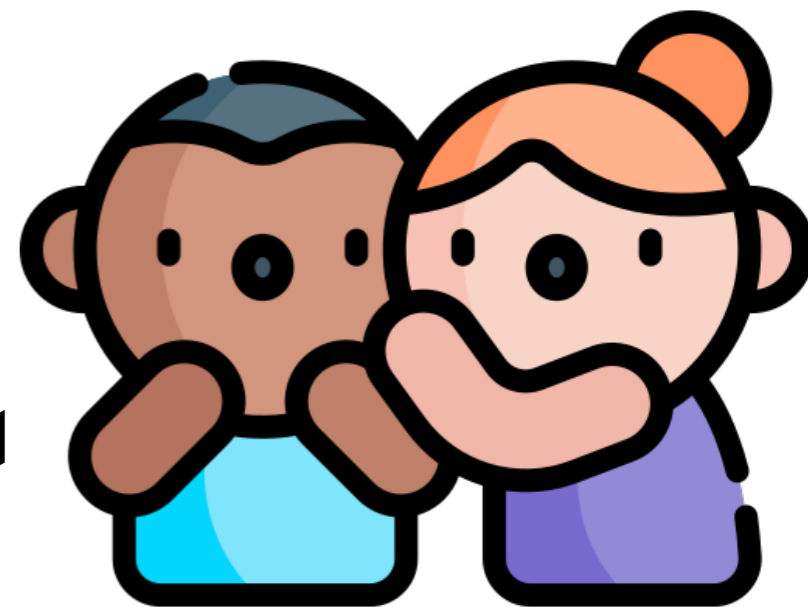
Display Slips

The following slides are for classroom display. As you teach each Word of the Day, words can be displayed in the classroom to enable pupils to use the taught vocabulary in an independent manner.





secret

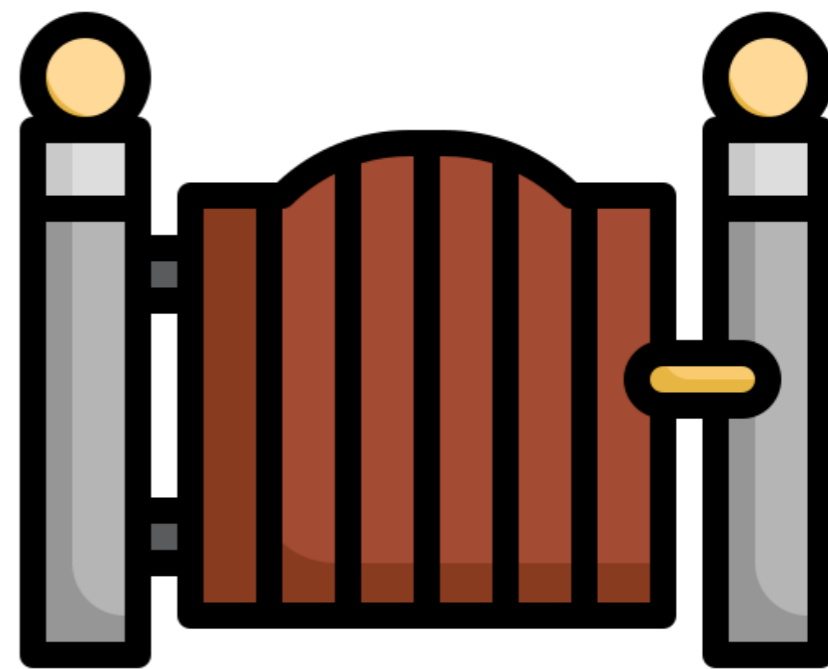


path





gate

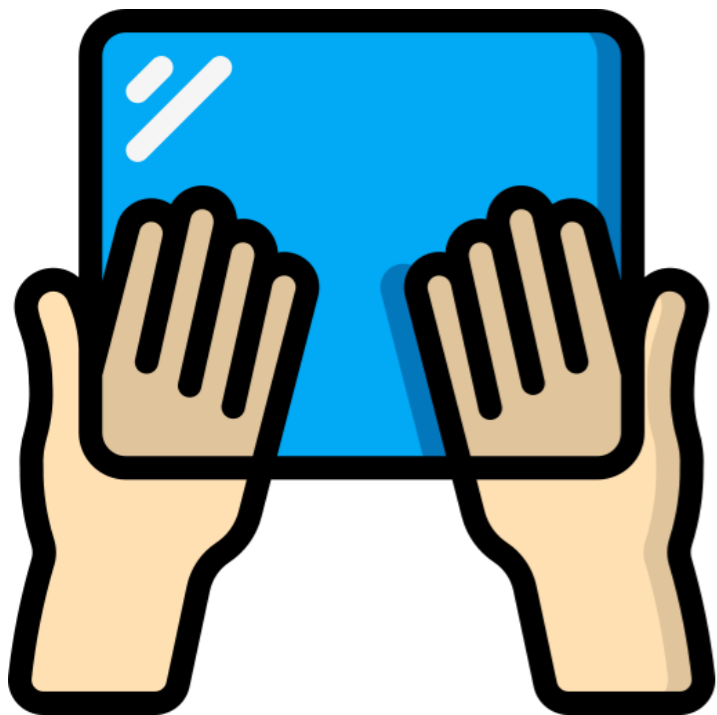


flower





insect

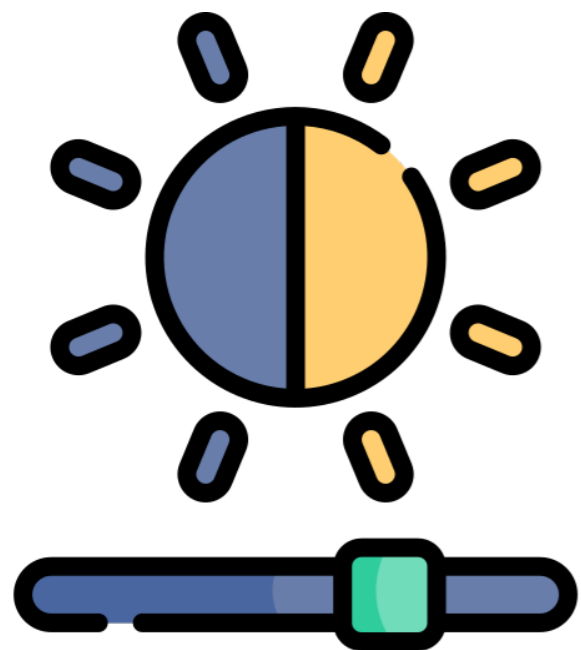


transparent





predict

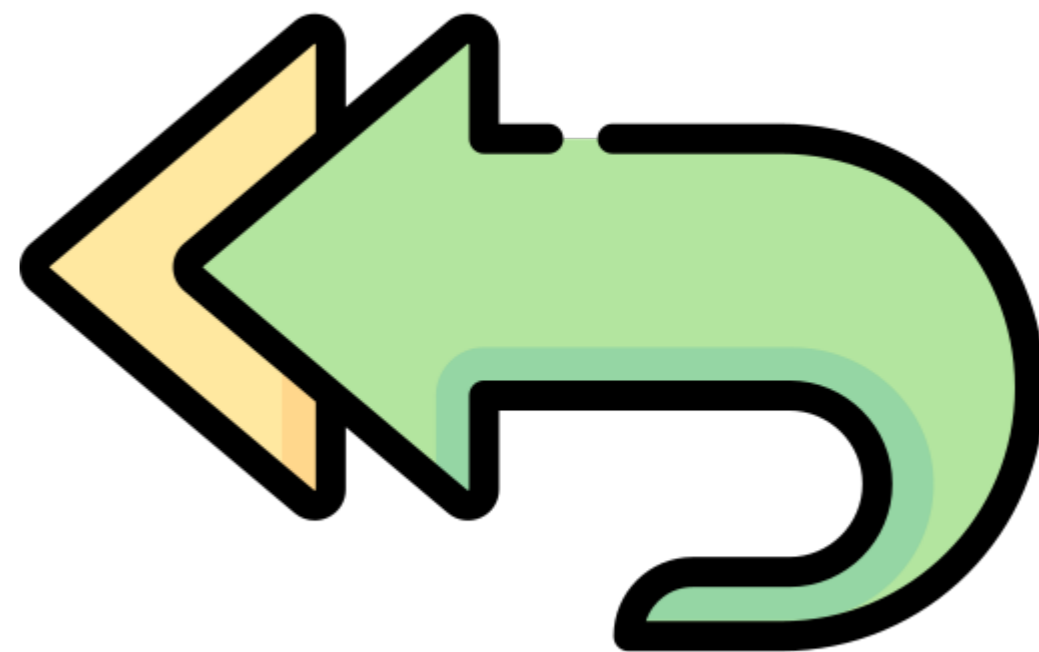


contrast





previous



patience

