

Word of the Day

Autumn Term 2022

Week 7 – 17th October 2022



This Week's Words

Grasshopper

tear
office
spare
chipped
lift

Shinobi

tolerate
mutter
fixation
unveil

VN VOCABULARY

Grasshopper Word of the Day

Word of the Day: picnic
(pic-nic)

Word Class: (verb / noun)

Definition: If you tear paper, cloth, or another material, or if it tears, you pull it into two pieces or you pull it so that a hole appears in it.

Phrases:

Synonym: word
word

Antonym: word
word

Rhyme: word
word

Link Word: word
word

Phrase Number One: The was a hole in Freddie's new school picnic.

Phrase Number Two:

Illustration: A picnic basket with a red apple and a sandwich.

Shinobi Word of the Day

Word of the Day: tear
(tear)

Word Class: (verb / noun)

Definition: If you tear paper, cloth, or another material, or if it tears, you pull it into two pieces or you pull it so that a hole appears in it.

Phrases:

Synonym: word
word

Antonym: word
word

Prefix / Suffix: word
word

Link Word: word
word

Phrase Number One: The was a tear in Freddie's new school book.

Phrase Number Two:

Illustration: A book with a tear in its cover.

'Words unlock the doors to a world of understanding...'

This Week's Words

Grasshopper

pain

howl

maze

nutrient

slink

Shinobi

glint

expand

lunge

stark

malfunction



VOCABULARY NINJA

Grasshopper (Tier 1)

pain

howl

maze

nutrient

slink



VOCABULARY NINJA

Shinobi (Tier 2)

glint

expand

lunge

stark

malfunction



VOCABULARY NINJA



Grasshopper Word of the Day

Word of the Day:

Pronunciation / Syllables

pain
(*pain*)

Word Class
(noun)

Definition:

Pain is the feeling of great discomfort you have, for example when you have been hurt or when you are ill.



Terry was in **pain** because he had jammed his finger.

Synonym:

agony

discomfort

Antonym:

Rhyme:

again

brain

Link Word:

body

injury



Grasshopper Word of the Day

Word of the Day:

Pronunciation / Syllables

howl
(howl)

Word Class
(verb / noun)

Definition:

If a person howls, they make a long, loud cry expressing pain, anger, or unhappiness.



Lorenzo **howled** in pain after falling from the trampoline.

Synonym:

wail

yelp

Antonym:

Rhyme:

foul

towel

Link Word:

pain

loud



Grasshopper Word of the Day

Word of the Day:

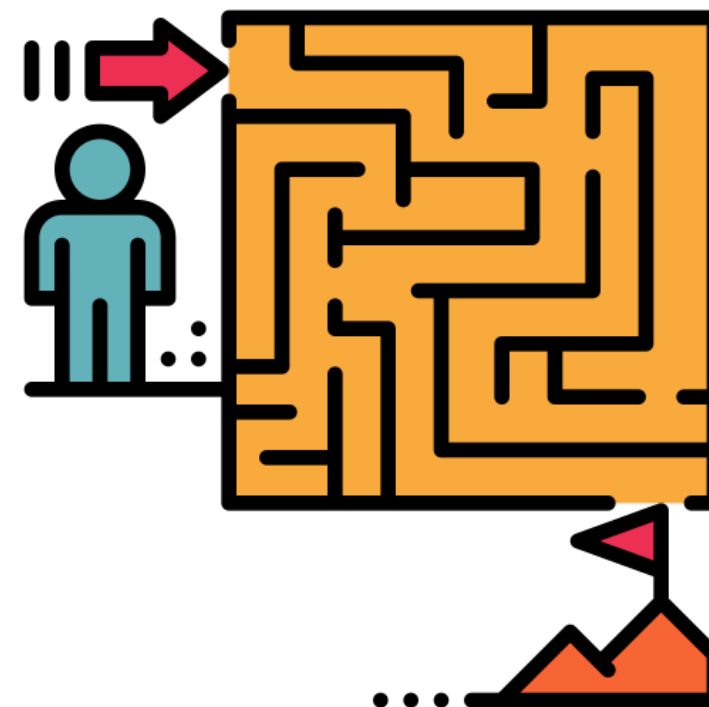
Pronunciation / Syllables

maze
(maze)

Word Class
(noun)

Definition:

A maze is a complex system of passages or paths between walls or hedges and is designed to confuse people who try to find their way through it.



The school was like a **maze**.

Synonym:

warren

web

Antonym:

Rhyme:

days

ways

Link Word:

lost

help



Grasshopper Word of the Day

Word of the Day:

nutrient
(*nu-tri-ent*)

Word Class
(noun)

Pronunciation / Syllables

Definition:

Nutrients are substances that help plants and animals to grow.



Alvaro got all of his **nutrients** from his five a day.

Synonym:

Antonym:

Rhyme:

Link Word:

food

fruit



Grasshopper Word of the Day

Word of the Day:

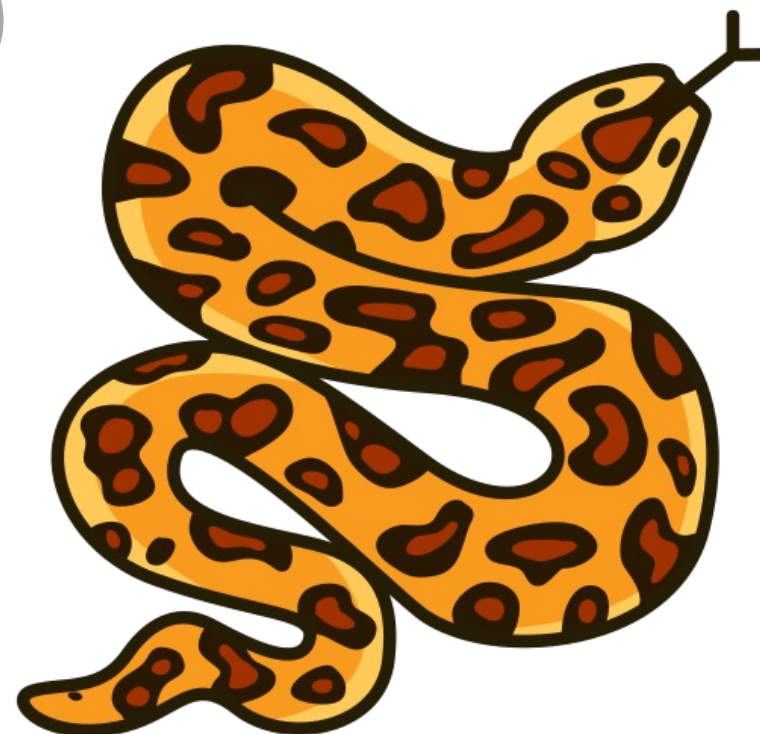
Pronunciation / Syllables

slink
(slink)

Word Class
(verb)

Definition:

If you slink somewhere, you move there quietly because you do not want to be seen.



The snake **slinked** through the long grass to the river.

Synonym:

creep

sneak

Antonym:

Rhyme:

think

wink

Link Word:

hide

sneak



Shinobi Word of the Day

Word of the Day:

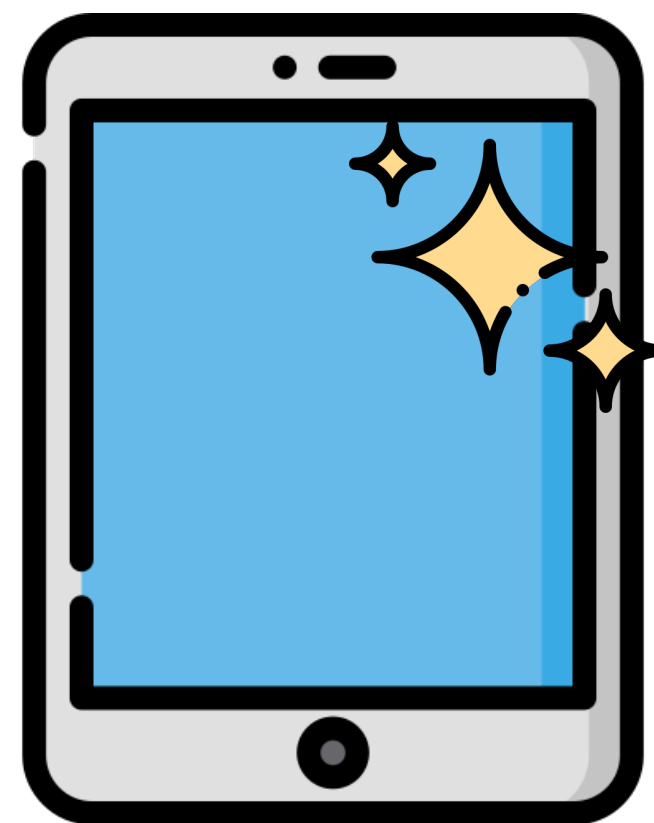
Pronunciation / Syllables

glint
(glint)

Word Class
(noun / verb)

Definition:

If something glints, it produces or reflects a quick flash of light.



Sunlight **glinted** off the screen of the tablet.

Synonym:

gleam
glimmer

Antonym:

Prefix / Suffix:

-ing
-ed

Rhyme:

print
hint

Link Word:

screen
window



Shinobi Word of the Day

Word of the Day:

Pronunciation / Syllables

expand
(ex-pand)

Word Class
(verb)

Definition:

If something expands or is expanded, it becomes larger.



The number of children in the club had quickly **expanded**.

Synonym:

develop

multiply

Antonym:

shrink

condense

Prefix / Suffix:

-ed

-ing

Rhyme:

demand

stand

Link Word:

business

population



Shinobi Word of the Day

Word of the Day:

Pronunciation / Syllables

lunge
(*lunge*)

Word Class
(verb)

Definition:

If you lunge in a particular direction, you move in that direction suddenly and clumsily.



Jenny **lunged** towards the fruit bowl.

Synonym:

pounce

dive

Antonym:

Prefix / Suffix:

-ed

-ing

Rhyme:

plunge

sponge

Link Word:

exercise

grab



Shinobi Word of the Day

Word of the Day:

Pronunciation / Syllables

stark
(*stark*)

Word Class
(adjective)

Definition:

Stark choices or statements are harsh and unpleasant.



The family had a **stark** decision to make.

Synonym:

grim
severe

Antonym:

simple

Prefix / Suffix:

-ly
-ness

Rhyme:

bark
lark

Link Word:

decision
moment



Shinobi Word of the Day

Word of the Day: **malfunction**

Word Class
(verb / noun)

Pronunciation / Syllables

(mal-func-tion)

Definition:

If a machine or part of the body malfunctions, it fails to work properly.



Nigel's hearing aid was **malfunctioning**.

Synonym:

fault

failure

Antonym:

Prefix / Suffix

-ed

-ing

Rhyme:

function

junction

Link Word:

machine

body

Vocabulary Laboratory



Describe / Definition:

Use it in a sentence:

Focus Word (write below):

Word Class:

Synonyms:

(words with same / similar meaning)

Antonyms:

(words with opposite meaning)

Draw your sentence:

Rhymes:

(words that sound the same)

Link Words:

(Example: football = pitch, team, player)

Vocabulary Visualiser

Draw the
Grasshopper words
and bring them to life.



Word: pain

Word: howl

Word: maze

Word: nutrient



Vocabulary Visualiser

Draw the **Shinobi**
words and bring
them to life.



Word: expand

Word: glint

Word: lunge

Word: malfunction



Matching Meanings

Draw lines from the **Grasshopper** words to their definitions.

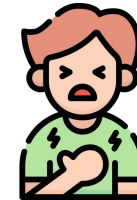


Grasshopper Word

Grasshopper Definitions

pain

If a person ***, they make a long, loud cry expressing pain, anger, or unhappiness.



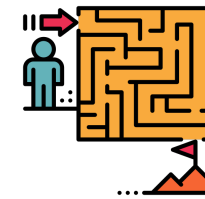
howl

If you ***, somewhere, you move there quietly because you do not want to be seen.



maze

A *** is a complex system of passages or paths between walls or hedges and is designed to confuse people who try to find their way through it.



nutrient

*** is the feeling of great discomfort you have, for example when you have been hurt or when you are ill.



slink

*** are substances that help plants and animals to grow.



Matching Meanings

Draw lines from the **Shinobi** words to their definitions.



Shinobi Word

Shinobi Definitions

glint

*** choices or statements are harsh and unpleasant.



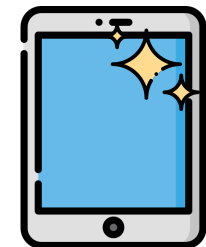
expand

If something *** or is expanded, it becomes larger.



lunge

If something ***, it produces or reflects a quick flash of light.



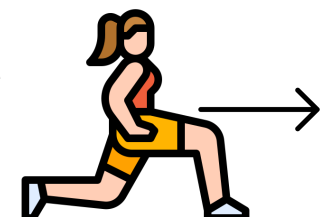
stark

If a machine or part of the body ***, it fails to work properly.



malfunction

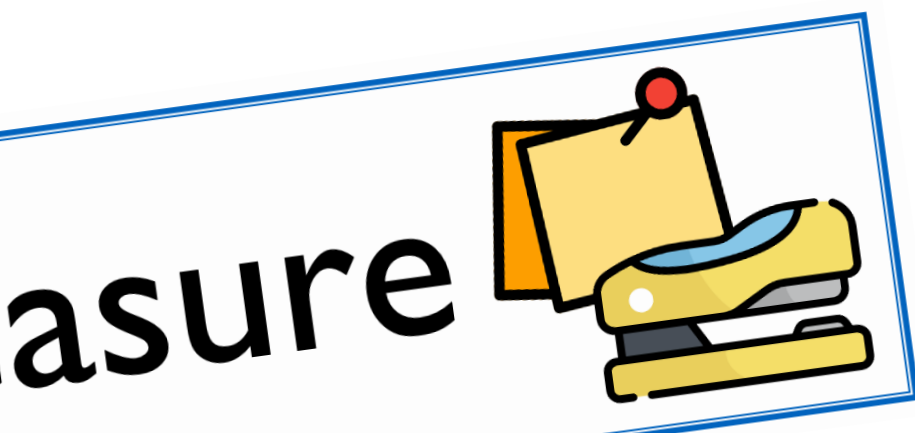
If you *** in a particular direction, you move in that direction suddenly and clumsily.





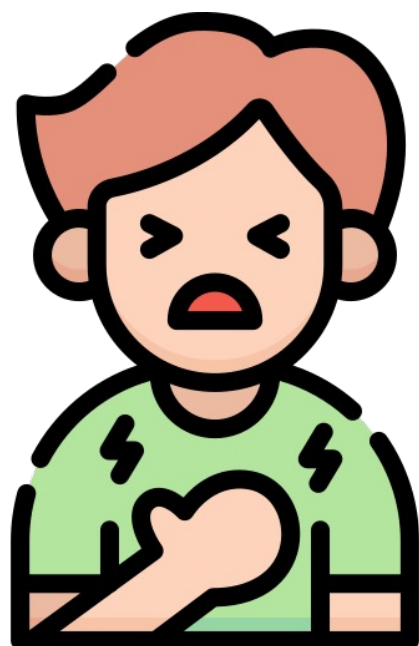
Display Slips

The following slides are for classroom display. As you teach each Word of the Day, words can be displayed in the classroom to enable pupils to use the taught vocabulary in an independent manner.





pain

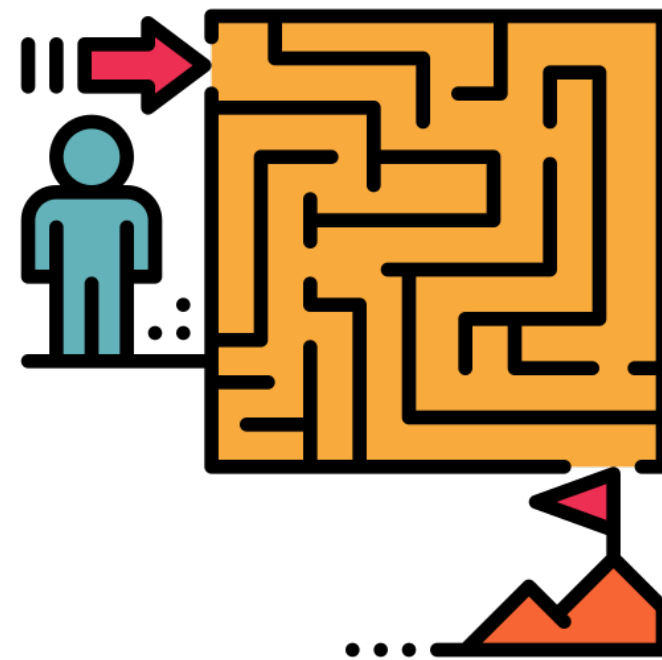


howl





maze

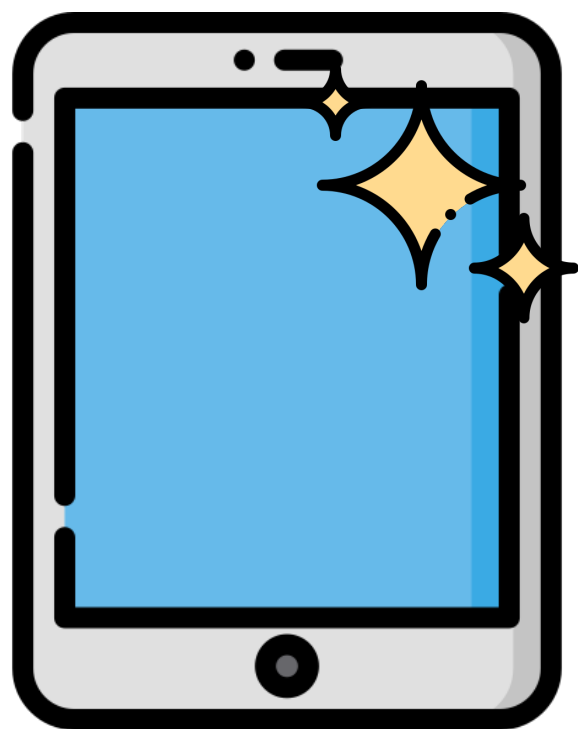
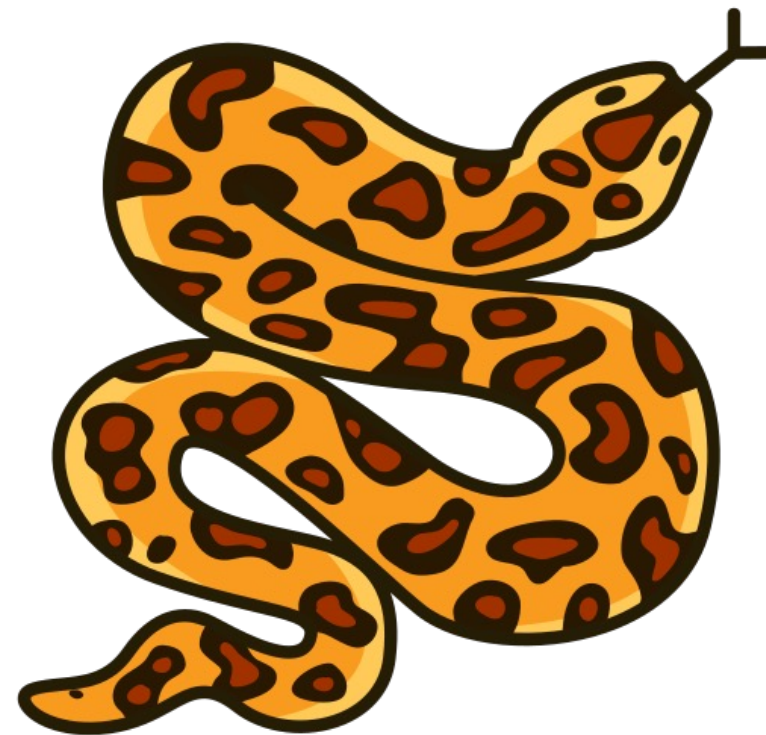


nutrient





slink

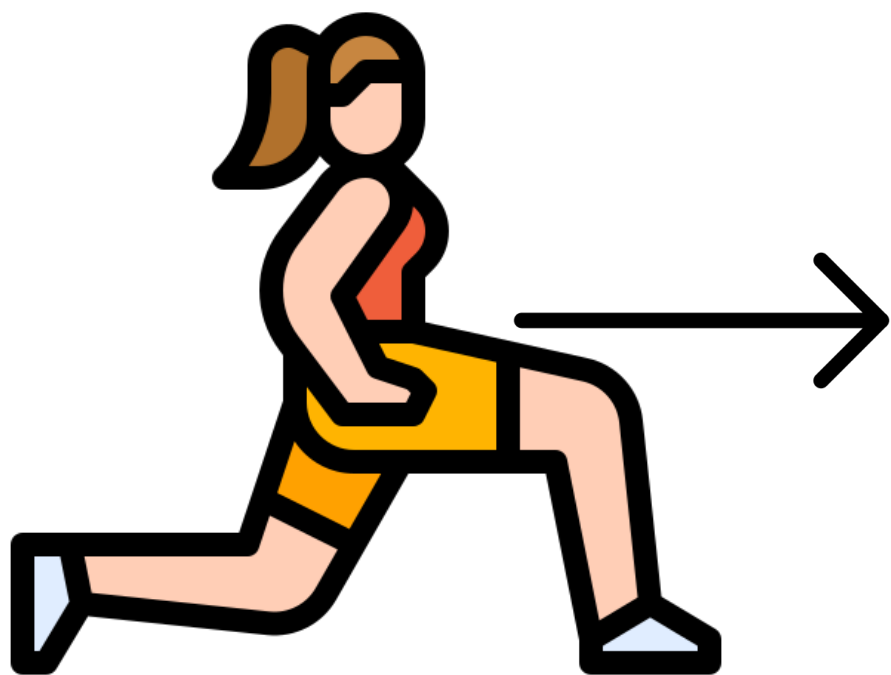


glint





expand



lunge





stark



malfunction

