

Word of the Day

Autumn Term 2022

Week 1 – 5th September 2022



This Week's Words

Grasshopper

tear
office
spare
chipped
lift

Shinobi

tolerate
mutter
fixation
unveil

VN VOCABULARY

Grasshopper Word of the Day

Word of the Day: picnic
(pic-nic)

Word Class: (verb / noun)

Definition: If you tear paper, cloth, or another material, or if it tears, you pull it into two pieces or you pull it so that a hole appears in it.

Phrases:

Synonym: word
word

Antonym: word
word

Rhyme: word
word

Link Word: word
word

Phrase Number One: The was a hole in Freddie's new school picnic.

Phrase Number Two:

VN VOCABULARY

Shinobi Word of the Day

Word of the Day: tear
(tear)

Word Class: (verb / noun)

Definition: If you tear paper, cloth, or another material, or if it tears, you pull it into two pieces or you pull it so that a hole appears in it.

Phrases:

Synonym: word
word

Antonym: word
word

Prefix / Suffix: word
word

Link Word: word
word

Phrase Number One: The was a tear in Freddie's new school book.

Phrase Number Two:

VN VOCABULARY

'Words unlock the doors to a world of understanding...'

This Week's Words

Grasshopper

worry

exercise

lonely

return

support

Shinobi

uncertain

emotional

relationship

overwhelm

well-being



VOCABULARY NINJA



Grasshopper Word of the Day

Word of the Day:

Pronunciation / Syllables

worry
(wor-ry)

Word Class
(verb)

Definition:

If you worry, you keep thinking about problems that you have or about unpleasant things that might happen.



Alice was **worried** about returning to school.

Phrases:

was very worried about

please don't worry because

Synonym:

panic

stew

Antonym:

Rhyme:

curry

hurry

Link Word:

about

inside



Grasshopper Word of the Day

Word of the Day:

exercise
(ex-er-cise)

Word Class
(verb / noun)

Pronunciation / Syllables

Definition:

If you exercise something such as your authority, your rights, or a good quality, you use it or put it into effect.



Exercise was great for helping me feel better.

Phrases:

exercise every day

go outside to exercise

Synonym:

movement

train

Antonym:

Rhyme:

Link Word:

daily

never



Grasshopper Word of the Day

Word of the Day:

Pronunciation / Syllables

lonely
(lone-ly)

Word Class
(adjective)

Definition:

Someone who is lonely is unhappy because they are alone or do not have anyone they can talk to.



Sometimes it was quite **lonely** at home.

Phrases:

sad and lonely

lonely and worried

Synonym:

alone

isolated

Antonym:

popular

sociable

Rhyme:

only

homely

Link Word:

person

place



Grasshopper Word of the Day

Word of the Day:

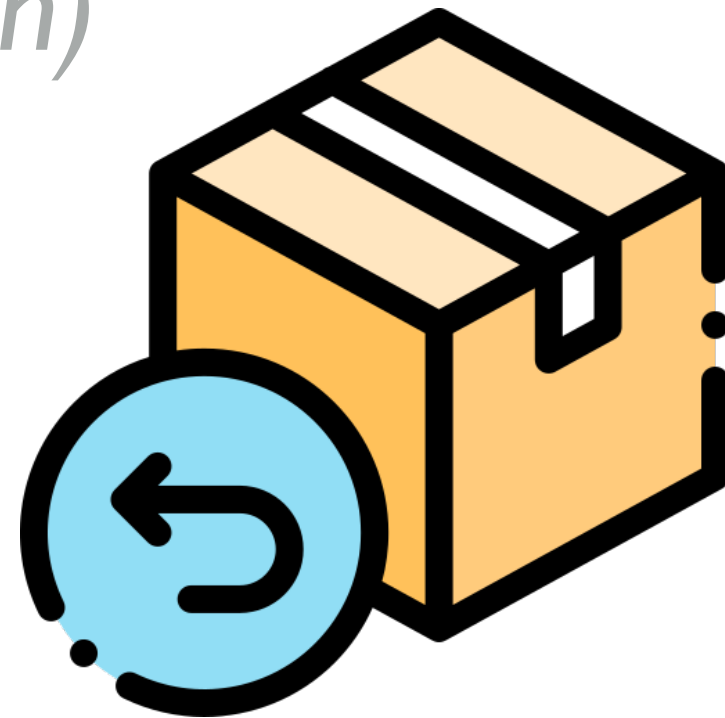
Pronunciation / Syllables

return
(re-turn)

Word Class
(verb / noun)

Definition:

When you return to a place,
you go back there after you
have been away.



The children were glad to **return** to their school.

Phrases:

glad to return

could not wait to return

Synonym:

go back
come back

Antonym:

depart
send

Rhyme:

learn
earn

Link Word:

home
journey



Grasshopper Word of the Day

Word of the Day:

support
(*sup-port*)

Word Class
(verb / noun)

Pronunciation / Syllables

Definition:

If you support someone or their ideas or aims, you agree with them, and perhaps help them because you want them to succeed.



The teachers were there to **support** the pupils.

Phrases:

very supportive

tried to support

Synonym:

help

aid

Antonym:

oppose

Rhyme:

short

report

Link Word:

network

worker



Shinobi Word of the Day

Word of the Day: **uncertain**

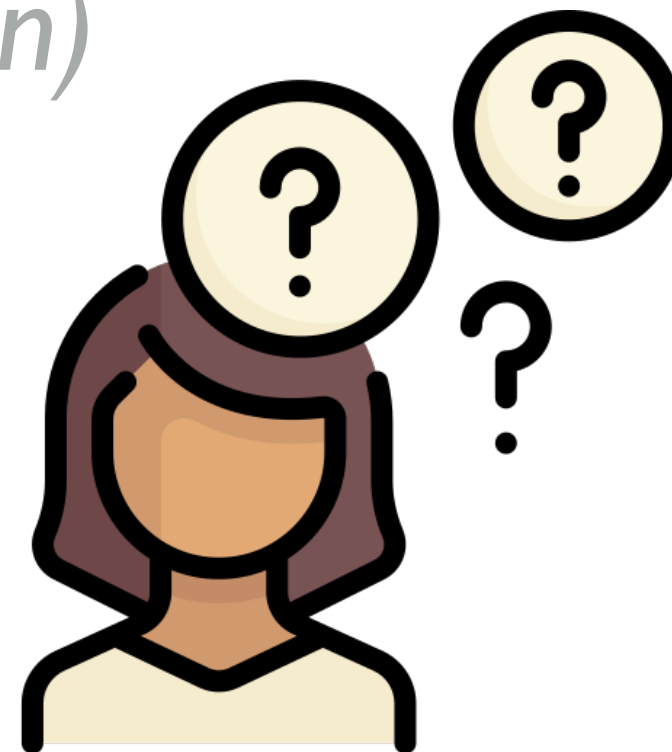
Word Class
(adjective)

Pronunciation / Syllables

(*un-cer-tain*)

Definition:

If you are uncertain about something, you do not know what you should do, what is going to happen, or what the truth is about something.



John was **uncertain** about what his classroom would be like.

Phrases:

uncertain of

uncertain because

Synonym:

unknown

unsure

Antonym:

certain

sure

Prefix / Suffix:

-ty

-ties

Rhyme:

curtain

burden

Link Word:

situation

outlook



Shinobi Word of the Day

Word of the Day: **emotional**

Word Class
(adjective)

Pronunciation / Syllables

(e-mo-tion-al)

Definition:

Emotional means concerned with emotions and feelings.



Paul was feeling **emotional** after seeing his friends.

Phrases:

feeling emotional

it had been emotional because

Synonym:

warm

emotive

Antonym:

Prefix / Suffix:

-ly

Rhyme:

irrational

sensational

Link Word:

day

event



Shinobi Word of the Day

Word of the Day: **relationship**

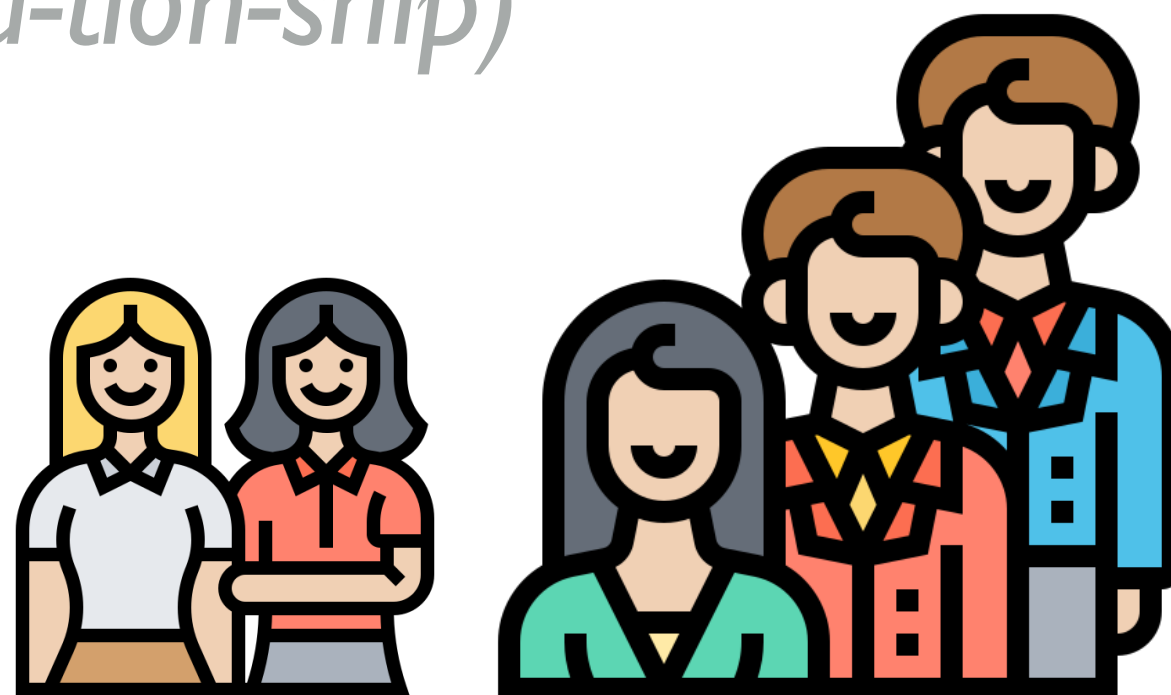
Word Class
(noun)

Pronunciation / Syllables

(re-la-tion-ship)

Definition:

The relationship between two people or groups is the way in which they feel and behave towards each other.



The children had a great **relationship** with the teacher.

Phrases:

close relationship with

a relationship between

Synonym:

connection

link

Antonym:

Prefix / Suffix:

inter-

Rhyme:

Link Word:

strained

negative



Shinobi Word of the Day

Word of the Day: **overwhelm**

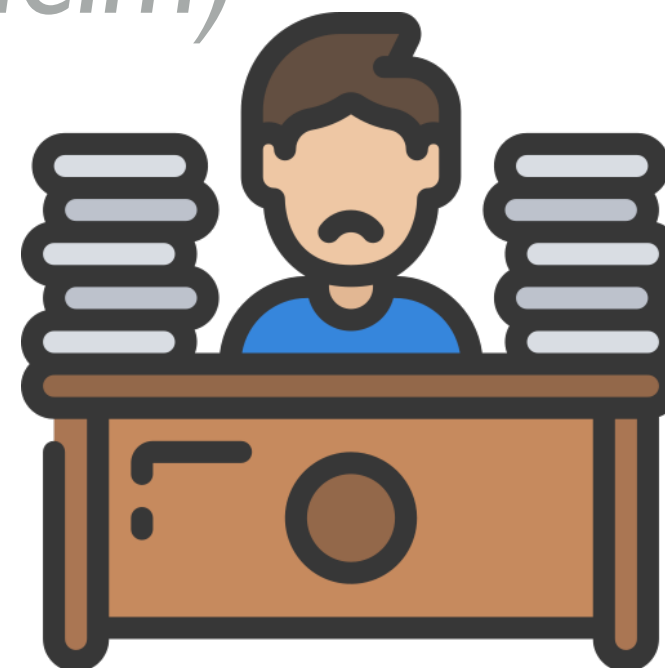
Word Class
(verb)

Pronunciation / Syllables

(o-ver-whelm)

Definition:

If you are overwhelmed by a feeling or event, it affects you very strongly, and you do not know how to deal with it.



Emily felt **overwhelmed** by the work in her lessons.

Phrases:

felt overwhelmed by

was overwhelming

Synonym:

swamp
overload

Antonym:

Prefix / Suffix:

-ing
-ed

Rhyme:

realm
helm

Link Word:

situation
day



Shinobi Word of the Day

Word of the Day: **well-being**

Word Class
(noun)

Pronunciation / Syllables

(well-be-ing)

Definition:

Someone's well-being is their health and happiness.



Everyone's **well-being** was the school's priority.

Phrases:

well-being was affected by

my well-being is

Synonym:

welfare
health

Antonym:

Prefix / Suffix

Rhyme:

guaranteeing
agreeing

Link Word:

physical
mental

Vocabulary Laboratory



Describe / Definition:

Use it in a sentence:

Focus Word (write below):

Word Class:

Synonyms:

(words with same / similar meaning)

Antonyms:

(words with opposite meaning)

Draw your sentence:

Rhymes:

(words that sound the same)

Link Words:

(Example: football = pitch, team, player)

Vocabulary Visualiser

Draw the
Grasshopper words
and bring them to life.



Word: worry

Word: exercise

Word: lonely

Word: support



Vocabulary Visualiser

Draw the **Shinobi**
words and bring
them to life.



Word: uncertain

Word: emotional

Word: relationship

Word: overwhelm



Matching Meanings

Draw lines from the **Grasshopper** words to their definitions.



Grasshopper Word

worry

exercise

lonely

return

support

Grasshopper Definitions

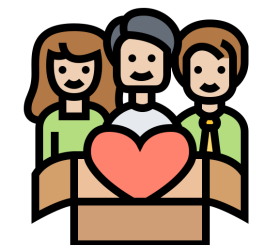
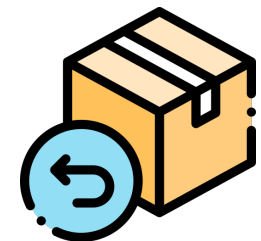
If you exercise something such as your authority, your rights, or a good quality, you use it or put it into effect.

When you return to a place, you go back there after you have been away.

If you worry, you keep thinking about problems that you have or about unpleasant things that might happen.

If you support someone or their ideas or aims, you agree with them, and perhaps help them because you want them to succeed.

Someone who is lonely is unhappy because they are alone or do not have anyone they can talk to.



Matching Meanings

Draw lines from the **Shinobi** words to their definitions.



Shinobi Word

Shinobi Definitions

uncertain

The relationship between two people or groups is the way in which they feel and behave towards each other.



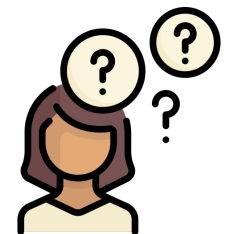
emotional

Emotional means concerned with emotions and feelings.



relationship

If you are uncertain about something, you do not know what you should do, what is going to happen, or what the truth is about something.



overwhelm

Someone's well-being is their health and happiness.



well-being

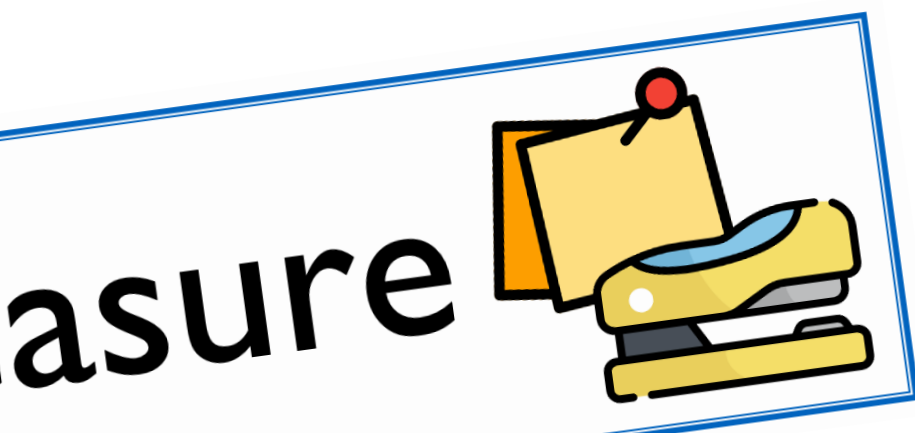
If you are overwhelmed by a feeling or event, it affects you very strongly, and you do not know how to deal with it.





Display Slips

The following slides are for classroom display. As you teach each Word of the Day, words can be displayed in the classroom to enable pupils to use the taught vocabulary in an independent manner.





worry

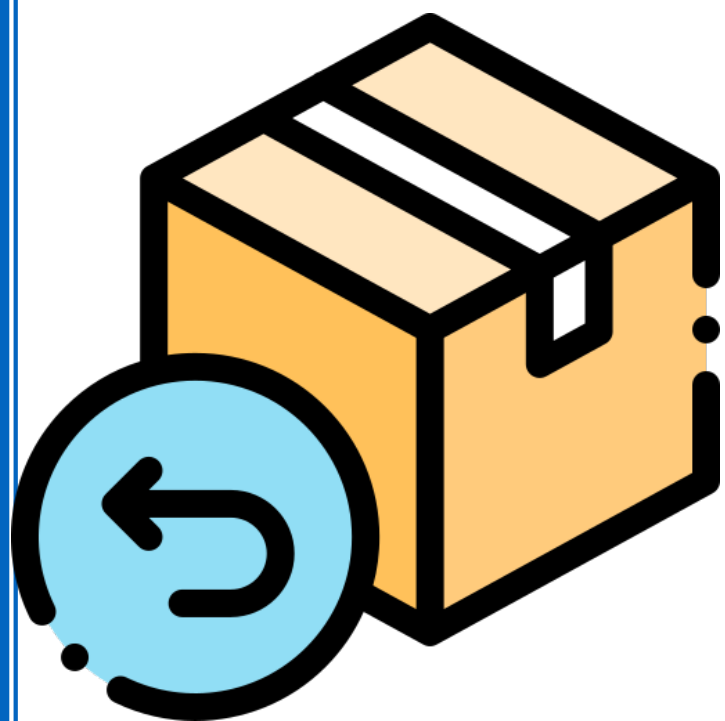
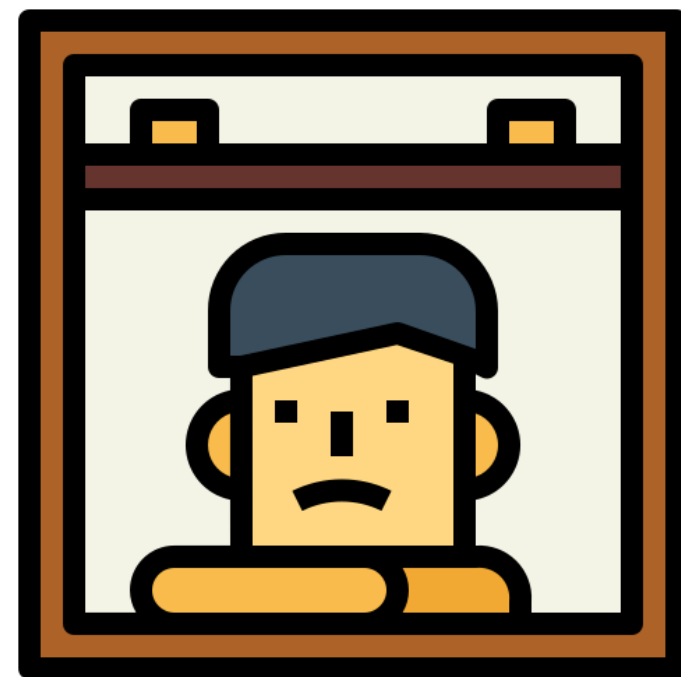


exercise





lonely

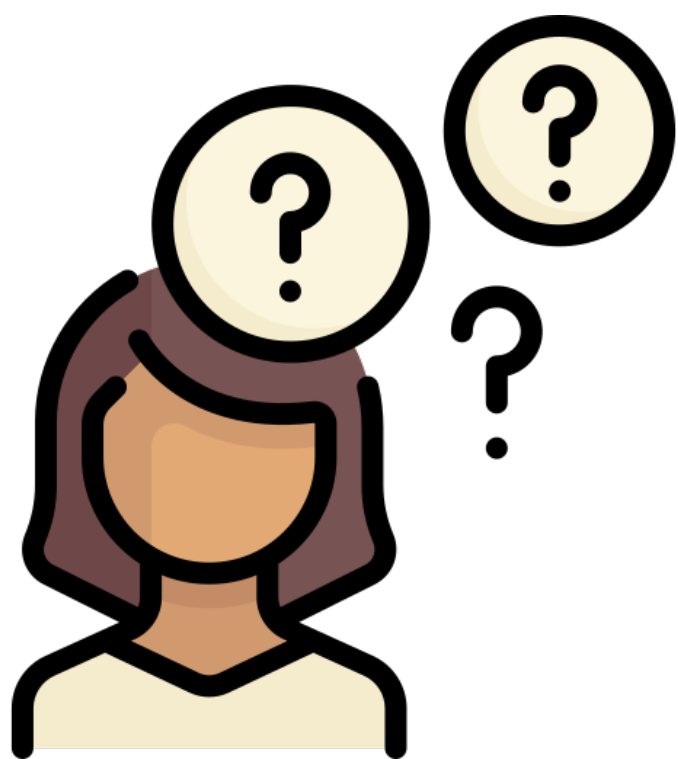
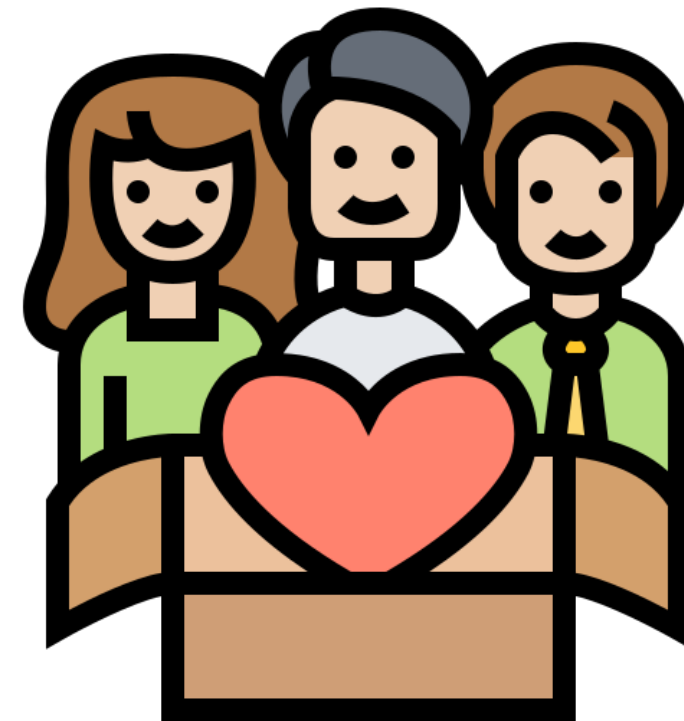


return





support



? uncertain





emotional

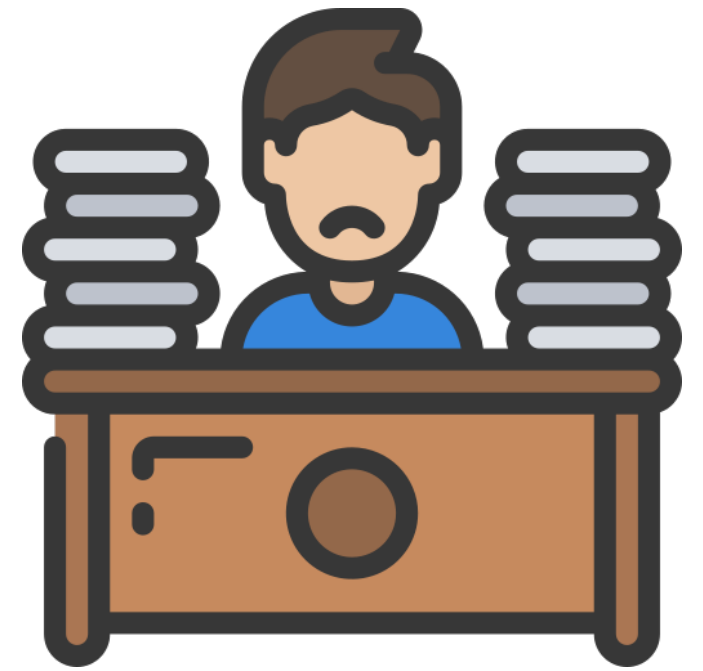


relationship





overwhelm



well-being

