

# Word of the Day

## Autumn Term 2022

Week 3 – 19th September 2022



### This Week's Words

**Grasshopper**

tear  
office  
spare  
chipped  
lift

**Shinobi**

tolerate  
mutter  
fixation  
unveil

**VN VOCABULARY**

### Grasshopper Word of the Day

**Word of the Day:** picnic  
*(pic-nic)*

**Word Class:** (verb / noun)

**Definition:** If you tear paper, cloth, or another material, or if it tears, you pull it into two pieces or you pull it so that a hole appears in it.

**Phrases:**

**Synonym:** word  
word

**Antonym:** word  
word

**Rhyme:** word  
word

**Link Word:** word  
word

**Phrase Number One:** The was a hole in Freddie's new school picnic.

**Phrase Number Two:**

### Shinobi Word of the Day

**Word of the Day:** tear  
*(tear)*

**Word Class:** (verb / noun)

**Definition:** If you tear paper, cloth, or another material, or if it tears, you pull it into two pieces or you pull it so that a hole appears in it.

**Phrases:**

**Synonym:** word  
word

**Antonym:** word  
word

**Prefix / Suffix:** word  
word

**Link Word:** word  
word

**Phrase Number One:** The was a tear in Freddie's new school book.

**Phrase Number Two:**

*'Words unlock the doors to a world of understanding...'*

# This Week's Words

**Grasshopper**

**funeral**

**suit**

**agree**

**salute**

**building**

**Shinobi**

**mourn**

**grime**

**infectious**

**beast**

**precaution**



**VOCABULARY NINJA**

# Grasshopper (Tier 1)

**funeral**

**suit**

**agree**

**salute**

**building**



**VOCABULARY NINJA**

# Shinobi (Tier 2)

**mourn**

**grime**

**infectious**

**beast**

**precaution**



**VOCABULARY NINJA**



# Grasshopper Word of the Day

Word of the Day:

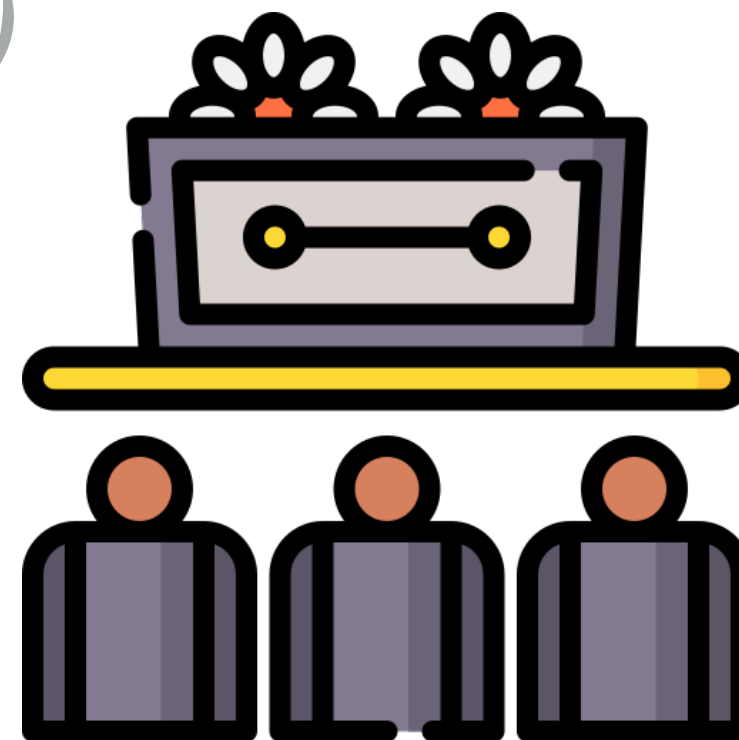
Pronunciation / Syllables

**funeral**  
(fu-ner-al)

Word Class  
(noun)

## Definition:

A funeral is the ceremony that is held when the body of someone who has died is buried or cremated.



The Queen's **funeral** was watched by everyone.

Synonym:

burial

cremation

Antonym:

Rhyme:

Link Word:

sadness

respect



# Grasshopper Word of the Day

Word of the Day:

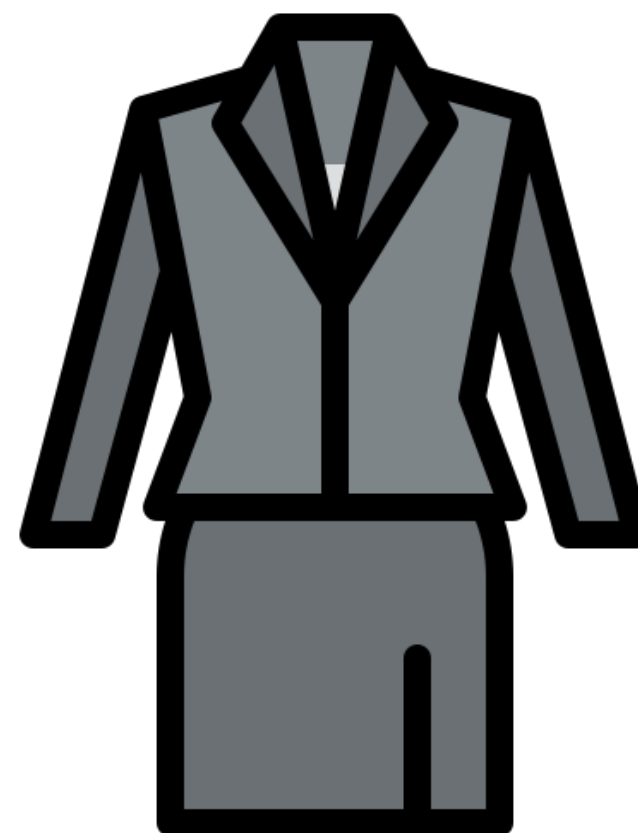
Pronunciation / Syllables

suit  
(*suit*)

Word Class  
(noun)

Definition:

A suit consists of a jacket, trousers, skirt and sometimes a waistcoat, all made from the same fabric.



Mrs Tweddle always wore a **suit** at school.

Synonym:

outfit

clothing

Antonym:

Rhyme:

fruit

dispute

Link Word:

smart

dark



# Grasshopper Word of the Day

Word of the Day:

Pronunciation / Syllables

agree  
(a-gree)

Word Class  
(verb)

Definition:

If you agree to do something, you say that you will do it. If you agree to a proposal, you accept it.



Paul **agreed** to help Scott with his homework.

Synonym:

decide

promise

Antonym:

Rhyme:

free

key

Link Word:

with

to



# Grasshopper Word of the Day

Word of the Day:

Pronunciation / Syllables

salute  
(sa-lute)

Word Class  
(verb / noun)

## Definition:

If you salute someone, you greet them or show your respect with a formal sign. Soldiers usually salute officers by raising their right hand so that their fingers touch their forehead.



The guards **saluted** the King as he drove past.

Synonym:

address

greet

Antonym:

Rhyme:

fruit

boot

Link Word:

soldier

arm





# Grasshopper Word of the Day

Word of the Day:

**building**  
(*build-ing*)

Word Class  
(noun)

Pronunciation / Syllables

**Definition:**

A building is a structure that has a roof and walls, for example a house or a factory.



The **building** was full of people.

**Synonym:**

structure

property

**Antonym:**

**Rhyme:**

**Link Word:**

large

empty



# Shinobi Word of the Day

Word Class  
(verb)

Word of the Day:

**mourn**  
(*mourn*)

Pronunciation / Syllables

## Definition:

If you mourn someone who has died or mourn for them, you are very sad that they have died and show your sorrow in the way that you behave.



The nation **mourned** the loss of the Queen.

Synonym:

regret

grieve

Antonym:

rejoice

Prefix / Suffix:

-ing

-ed

Rhyme:

born

torn

Link Word:

cry

sadness



# Shinobi Word of the Day

Word of the Day:

Pronunciation / Syllables

grime  
(grime)

Word Class  
(noun)

Definition:

Grime is dirt which has collected on the surface of something.



Ravi's hands were covered in **grime**.

Synonym:

dirt  
sludge

Antonym:

Prefix / Suffix:

-ed  
be-

Rhyme:

slime  
crime

Link Word:

dirty  
clean



# Shinobi Word of the Day

Word of the Day:

**infectious**  
(in-fec-tious)

Word Class  
(adjective)

Pronunciation / Syllables

## Definition:

If a feeling is infectious, it spreads to other people. Something that spreads to others easily.



Mel's laughter was **infectious**.

Synonym:

contagious  
spreading

Antonym:

Prefix / Suffix:

non-  
-ly

Rhyme:

Link Word:

feeling  
disease



# Shinobi Word of the Day

Word of the Day:

Pronunciation / Syllables

**beast**  
(beast)

Word Class  
(noun)

## Definition:

You can refer to an animal as a beast, especially if it is a large, dangerous, unknown or unusual one.



The **beast** had left behind large tracks in the mud.

Synonym:

creature

critter

Antonym:

Prefix / Suffix:

-ly

Rhyme:

least

feast

Link Word:

animal

creature



# Shinobi Word of the Day

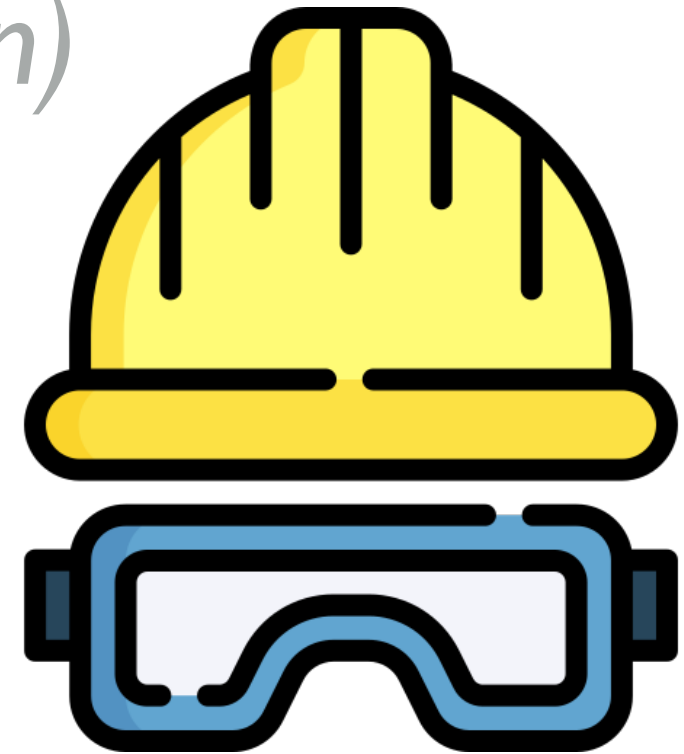
Word Class  
(noun)

Word of the Day: **precaution**  
(*pre-cau-tion*)

Pronunciation / Syllables

## Definition:

A precaution is an action that is intended to prevent something dangerous or unpleasant from happening.



Mr Hinds wore goggles and a helmet as a **precaution**.

Synonym:

safeguard

defence

Antonym:

Prefix / Suffix

-s

-ary

Rhyme:

caution

Link Word:

safety

protect

# Vocabulary Laboratory



Describe / Definition:

Use it in a sentence:

Focus Word (write below):

Word Class:

Synonyms:

(words with same / similar meaning)

Antonyms:

(words with opposite meaning)

Draw your sentence:

Rhymes:

(words that sound the same)

Link Words:

(Example: football = pitch, team, player)

# Vocabulary Visualiser

Draw the  
**Grasshopper** words  
and bring them to life.



Word: funeral

Word: suit

Word: salute

Word: building





# Vocabulary Visualiser

Draw the **Shinobi**  
words and bring  
them to life.



Word: mourn

Word: infectious

Word: beast

Word: precaution



# Matching Meanings

Draw lines from the **Grasshopper** words to their definitions.

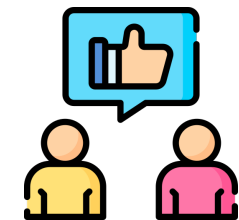


## Grasshopper Word

## Grasshopper Definitions

funeral

If you \*\*\* to do something, you say that you will do it. If you \*\*\* to a proposal, you accept it.



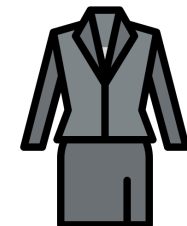
suit

A \*\*\* is a structure that has a roof and walls, for example a house or a factory.



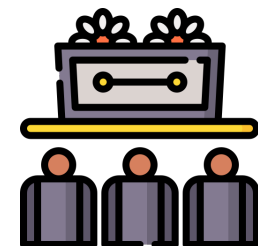
agree

A \*\*\* consists of a jacket, trousers, skirt and sometimes a waistcoat, all made from the same fabric.



salute

A \*\*\* is the ceremony that is held when the body of someone who has died is buried or cremated.



building

If you \*\*\* someone, you greet them or show your respect with a formal sign. Soldiers usually \*\*\* officers by raising their right hand so that their fingers touch their forehead.



# Matching Meanings

Draw lines from the **Shinobi** words to their definitions.



## Shinobi Word

## Shinobi Definitions

mourn

If a feeling is \*\*\*, it spreads to other people.  
Something that spreads to others easily.



grime

A \*\*\* is an action that is intended to prevent  
something dangerous or unpleasant from  
happening.



infectious

If you \*\*\* someone who has died or \*\*\* for  
them, you are very sad that they have died  
and show your sorrow in the way that you  
behave.



beast

You can refer to an animal as a \*\*\*,  
especially if it is a large, dangerous, or  
unusual one.



precaution

\*\*\* is dirt which has collected on the surface  
of something.





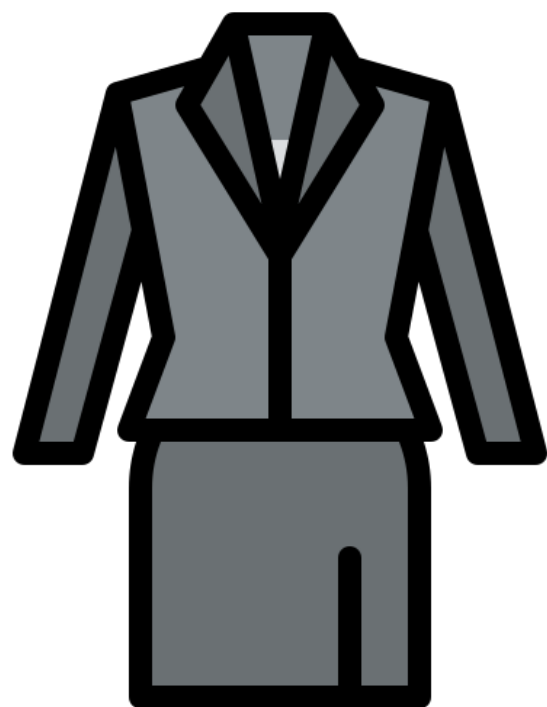
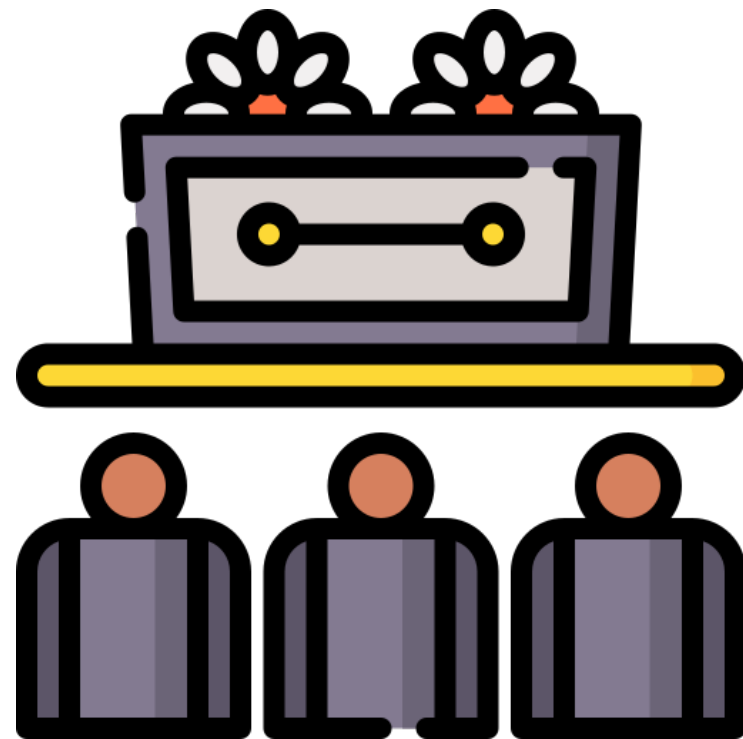
# Display Slips

The following slides are for classroom display. As you teach each Word of the Day, words can be displayed in the classroom to enable pupils to use the taught vocabulary in an independent manner.





# funeral

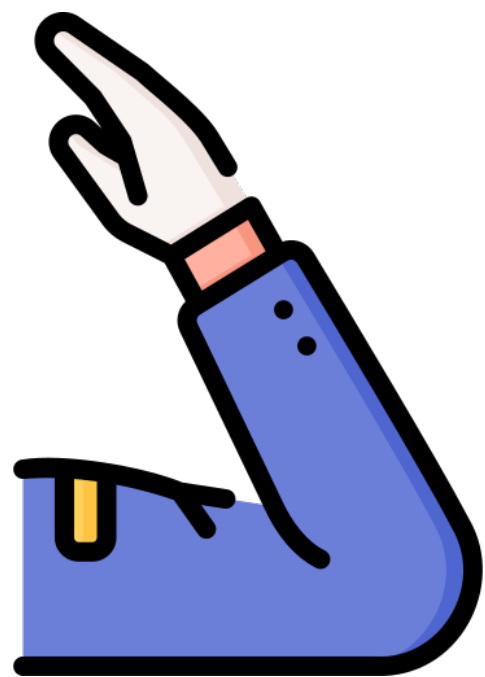


# suit





# agree



# salute





building



mourn





# grime



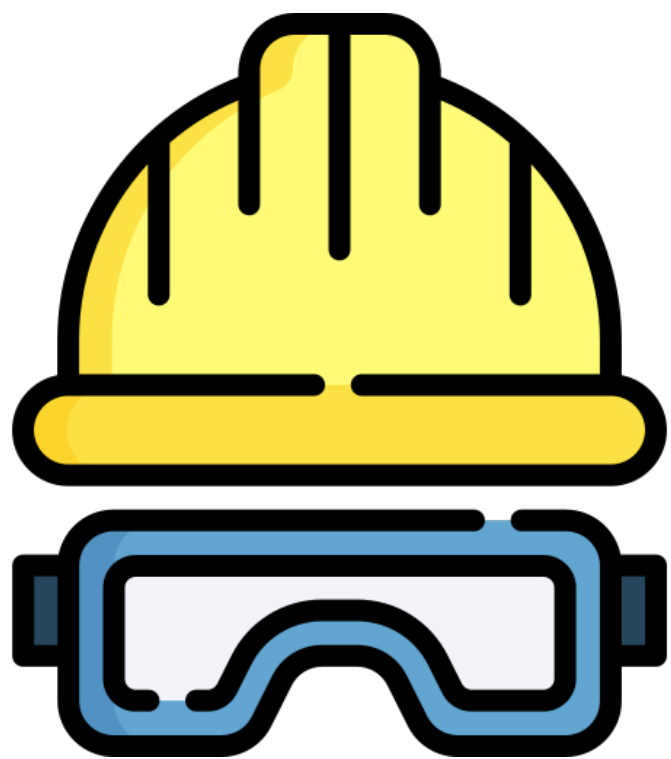
# infectious







beast



precaution

