

Word of the Day

Summer Term 2022

Week 38 – 19th July 2022



This Week's Words

Grasshopper

tear
office
spare
chipped
lift

Shinobi

tolerate
mutter
fixation

VN
VOCABULARY NINJA

Grasshopper Word of the Day

Word of the Day: heart
Word Class: (noun)

Definition:
Your heart is the organ in your chest that pumps the blood around your body. People also use heart to refer to the area of their chest that is closest to their heart.

My heart was beating in my chest.

Rhyme: heart was beating
part
start

Link Word: blood
body

Shinobi Word of the Day

Word of the Day: calamitous
Word Class: (adjective)

Definition:
If you describe an event or situation as calamitous, you mean it is very unfortunate or serious.

The calamitous twins destroyed the play room.

Phrases: the calamitous pair
completely calamitous

Synonym: disastrous
devastating

Antonym: good

Prefix / Suffix:

Rhyme: glamorous

Link Word: disaster
bad

'Words unlock the doors to a world of understanding...'

This Week's Words

Grasshopper

tourist

drought

island

pool

beach

Shinobi

withdraw

alongside

wounded

absorb

transfer



VOCABULARY NINJA

Grasshopper (Tier 1)

tourist

drought

island

pool

beach



VOCABULARY NINJA

Shinobi (Tier 2)

withdraw

alongside

wounded

absorb

transfer



VOCABULARY NINJA



Grasshopper Word of the Day

Word of the Day:

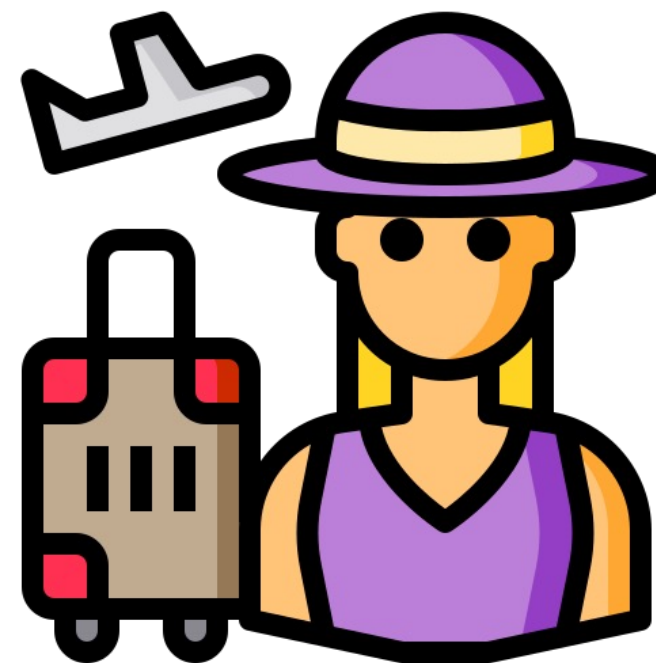
tourist
(tour-ist)

Word Class
(noun)

Pronunciation / Syllables

Definition:

A tourist is a person who is visiting a place for pleasure and interest, especially when they are on holiday.



The city was full of tourists.

Phrases:

excited tourist

tourists everywhere

Synonym:

traveller

visitor

Antonym:

local

Rhyme:

purest

Link Word:

travel

visit



Grasshopper Word of the Day

Word of the Day:

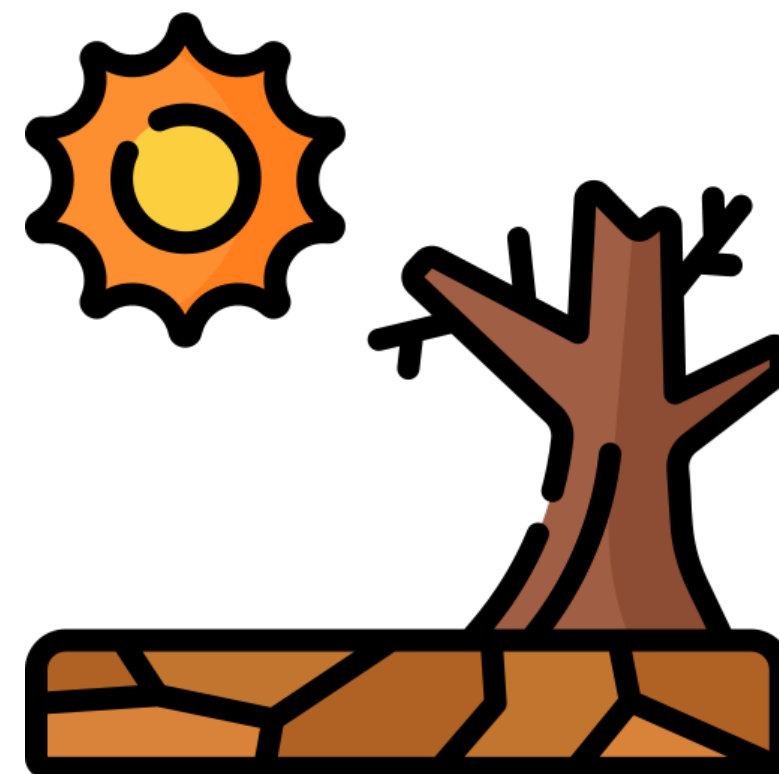
drought
(drought)

Word Class
(noun)

Pronunciation / Syllables

Definition:

A drought is a long period of time during which no rain falls.



The **drought** was a huge problem.

Phrases:

Painful drought

deadly drought

Synonym:

dry spell

Antonym:

Rhyme:

without
doubt

Link Word:

heat
water



Grasshopper Word of the Day

Word of the Day:

Pronunciation / Syllables

island
(is-land)

Word Class
(noun)

Definition:

An island is a piece of land that is completely surrounded by water.



The **island** was surrounded by the ocean.

Phrases:

lonely island

relaxing island

Synonym:

isle

key

Antonym:

mainland

Rhyme:

Link Word:

water

alone



Grasshopper Word of the Day

Word of the Day:

Pronunciation / Syllables

pool
(pool)

Word Class
(noun / verb)

Definition:

A pool is a fairly small area of still water.



Pools of water appeared as it began to rain.

Phrases:

growing pool of

filthy pool of

Synonym:

puddle

Antonym:

Rhyme:

cool
drool

Link Word:

water
swim



Grasshopper Word of the Day

Word of the Day:

Pronunciation / Syllables

beach
(beach)

Word Class
(noun)

Definition:

A beach is an area of sand or stones beside the sea.



Today we are visiting the **beach**.

Phrases:

beautiful beach

long, rolling beach

Synonym:

shore

coast

Antonym:

Rhyme:

reach

teach

Link Word:

day

wear



Shinobi Word of the Day

Word of the Day:

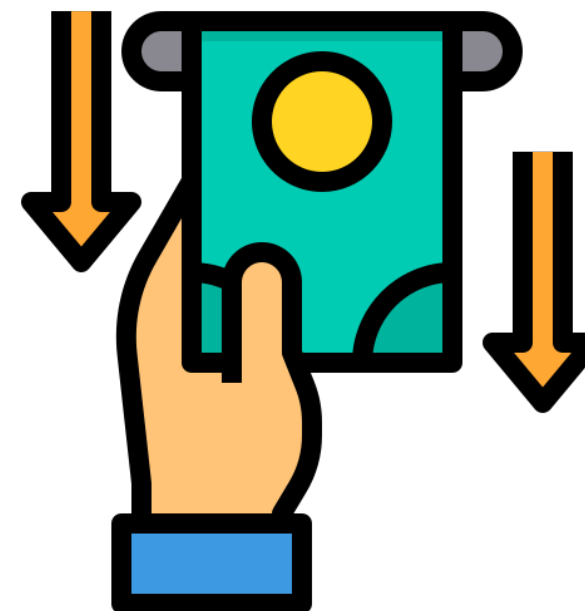
Pronunciation / Syllables

withdraw
(*with-draw*)

Word Class
(verb)

Definition:

If you withdraw something from a place, you remove it or take it away.



Mia's mum **withdrew** money from the bank.

Phrases:

needed to withdraw

withdrew from

Synonym:

remove

extract

Antonym:

insert

deposit

Prefix / Suffix:

-able

-ing

Rhyme:

law

saw

Link Word:

money

form



Shinobi Word of the Day

Word of the Day:

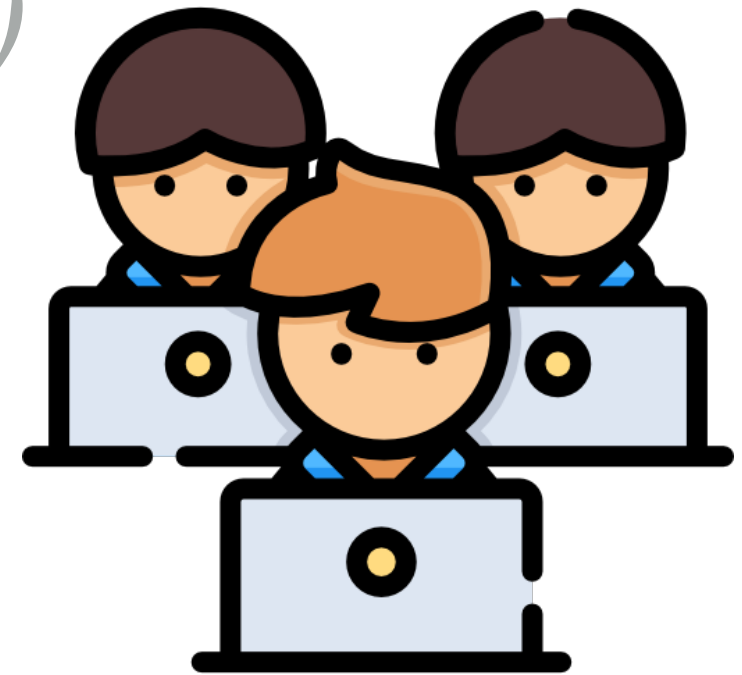
alongside
(a-long-side)

Word Class
(preposition)

Pronunciation / Syllables

Definition:

If one thing is alongside another thing, the first thing is next to the second.



Rosie worked alongside her friends on the computers.

Phrases:

worked alongside

played alongside

Synonym:

next to

with

Antonym:

Prefix / Suffix:

Rhyme:

wrong side

Link Word:

friends

enemies



Shinobi Word of the Day

Word of the Day:

wounded
(wound-ed)

Word Class
(verb)

Pronunciation / Syllables

Definition:

If a weapon or something sharp wounds you, it damages your body.



Joe had been **wounded** by the loose wire on the fence.

Phrases:

wounded badly by

had been wounded by

Synonym:

injure

main

Antonym:

heal

Prefix / Suffix:

Rhyme:

included

concluded

Link Word:

skin

flesh



Shinobi Word of the Day

Word of the Day:

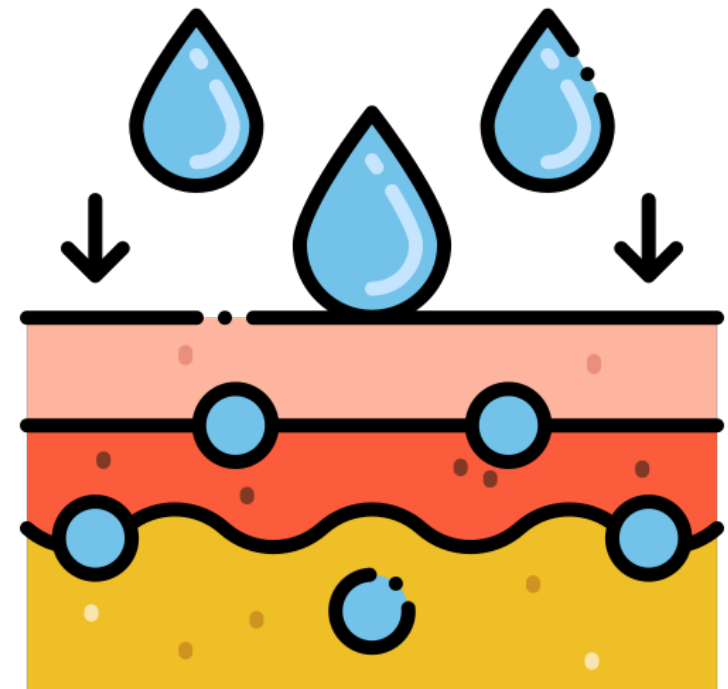
Pronunciation / Syllables

absorb
(*ab-sorb*)

Word Class
(verb)

Definition:

If something absorbs a liquid, gas, or other substance, it soaks it up or takes it in.



My skin quickly **absorbed** the sun screen.

Phrases:

quickly absorbed the

absorbed every drop

Synonym:

soak up

Antonym:

exude

give out

Prefix / Suffix:

-ent

-tion

Rhyme:

Link Word:

water

damage



Shinobi Word of the Day

Word of the Day:

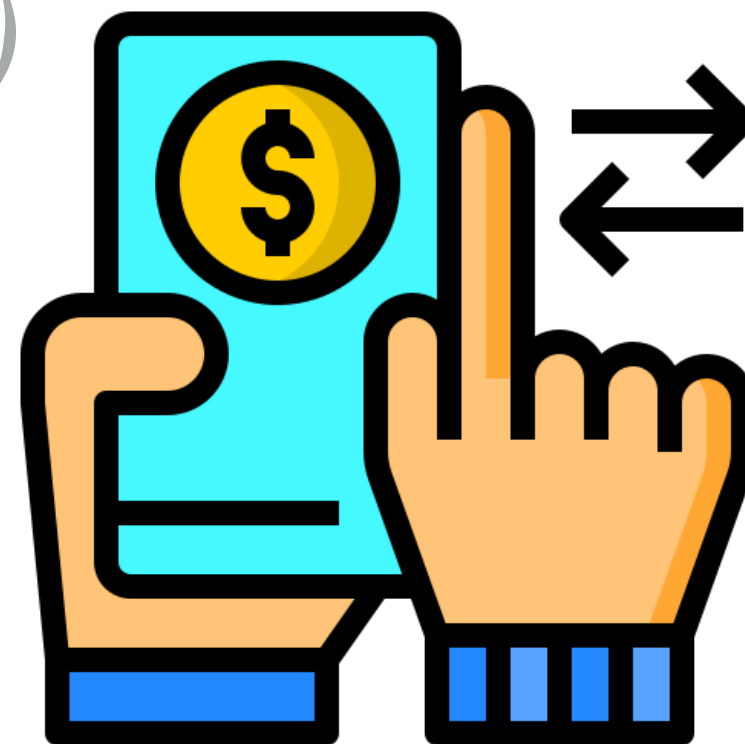
Pronunciation / Syllables

transfer
(trans-fer)

Word Class
(verb / noun)

Definition:

If you transfer something or someone from one place to another, or they transfer from one place to another, they go from the first place to the second.



Dad quickly **transferred** money to pay for a ticket.

Phrases:

was transferred to

quickly transferred

Synonym:

move

send

Antonym:

Prefix / Suffix

-ed

-ing

Rhyme:

prefer

deter

Link Word:

money

food

Vocabulary Laboratory



Describe / Definition:

Use it in a sentence:

Focus Word (write below):

Word Class:

Synonyms:

(words with same / similar meaning)

Antonyms:

(words with opposite meaning)

Draw your sentence:

Rhymes:

(words that sound the same)

Link Words:

(Example: football = pitch, team, player)

Vocabulary Visualiser

Draw the
Grasshopper words
and bring them to life.



Word: tourist

Word: drought

Word: island

Word: pool



Vocabulary Visualiser

Draw the **Shinobi**
words and bring
them to life.



Word: withdraw

Word: alongside

Word: absorb

Word: transfer



Matching Meanings

Draw lines from the **Grasshopper** words to their definitions.

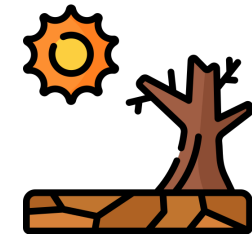


Grasshopper Word

Grasshopper Definitions

tourist

A *** is a long period of time during which no rain falls.



drought

A *** is a fairly small area of still water.



island

A *** is a person who is visiting a place for pleasure and interest, especially when they are on holiday.



pool

A *** is an area of sand or stones beside the sea.



beach

An *** is a piece of land that is completely surrounded by water.



Matching Meanings

Draw lines from the **Shinobi** words to their definitions.



Shinobi Word

Shinobi Definitions

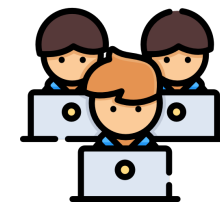
withdraw

If you *** something or someone from one place to another, or they *** from one place to another, they go from the first place to the second.



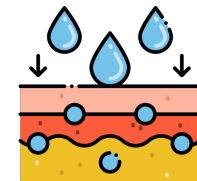
alongside

If one thing is *** another thing, the first thing is next to the second.



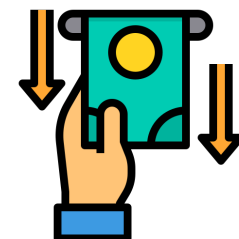
wounded

If something *** a liquid, gas, or other substance, it soaks it up or takes it in.



absorb

If you *** something from a place, you remove it or take it away.



transfer

If a weapon or something sharp *** you, it damages your body.





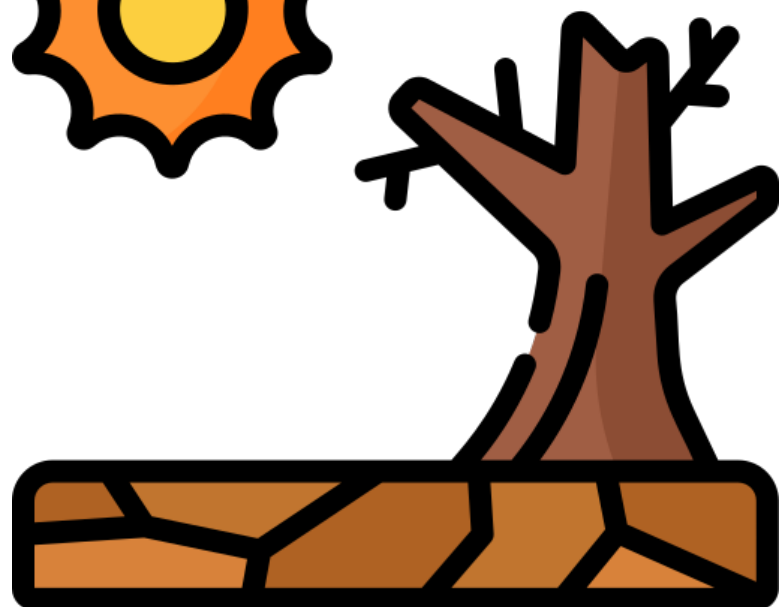
Display Slips

The following slides are for classroom display. As you teach each Word of the Day, words can be displayed in the classroom to enable pupils to use the taught vocabulary in an independent manner.





tourist



drought





Island

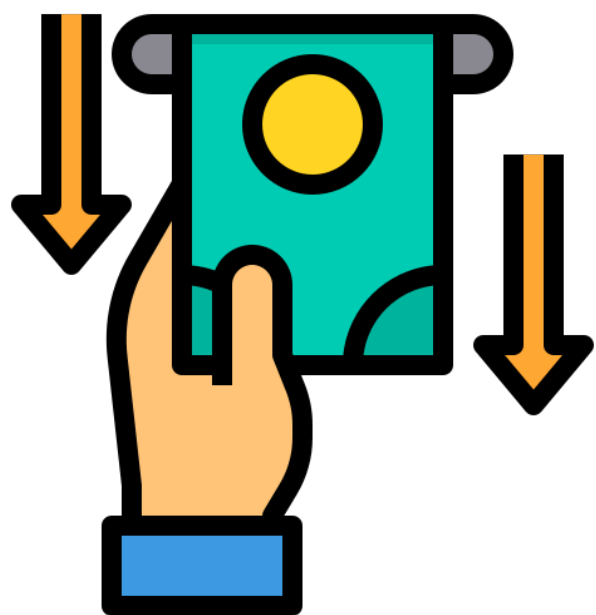


pool





beach

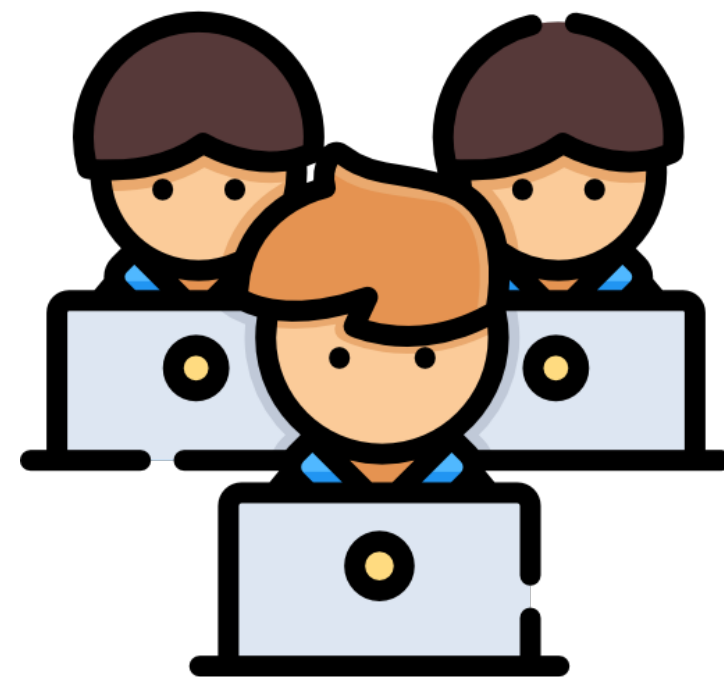


withdraw





alongside

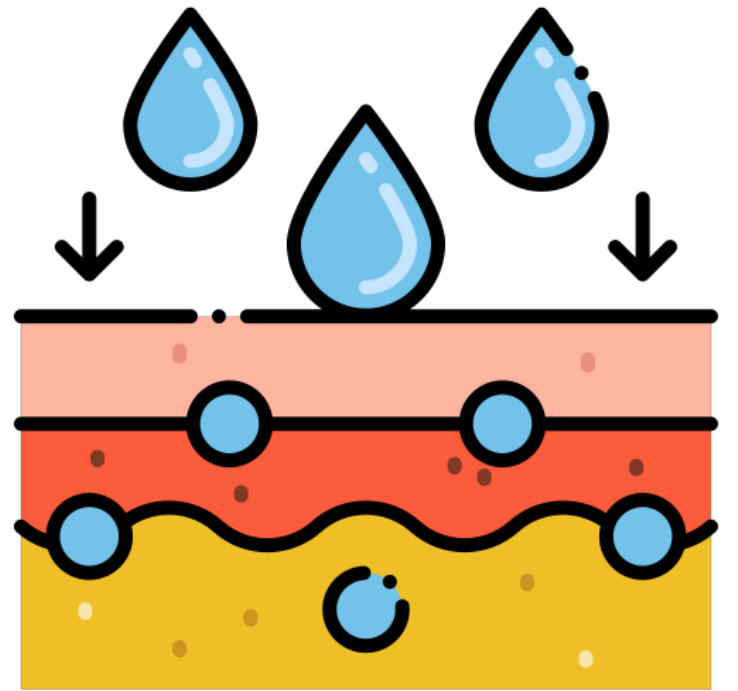


wounded





absorb



transfer

