

# Word of the Day

## Summer Term 2022

Week 31 – 16<sup>th</sup> May 2022



**This Week's Words**

**Grasshopper**

- tear
- office
- spare
- chipped
- lift

**Shinobi**

- tolerate
- mutter
- fixation

**VN**  
VOCABULARY NINJA

**Grasshopper Word of the Day**

**Word of the Day:** heart  
*(heart)*

**Word Class:** (noun)

**Definition:**  
Your heart is the organ in your chest that pumps the blood around your body. People also use heart to refer to the area of their chest that is closest to their heart.

**My heart was beating in my chest.**

**Rhyme:** heart was beating  
part  
start

**Link Word:** blood  
body

**Shinobi Word of the Day**

**Word of the Day:** calamitous  
*(ca-lam-i-tous)*

**Word Class:** (adjective)

**Definition:**  
If you describe an event or situation as calamitous, you mean it is very unfortunate or serious.

**The calamitous twins destroyed the play room.**

**Phrases:** the calamitous pair  
completely calamitous

**Synonym:** disastrous  
devastating

**Antonym:** good

**Prefix / Suffix:**

**Rhyme:** glamorous

**Link Word:** disaster  
bad

*'Words unlock the doors to a world of understanding...'*

# This Week's Words

## Grasshopper

**praise**

**shout**

**view**

**book**

**story**

## Shinobi

**impact**

**beyond**

**mission**

**dedicated**

**connect**



**VOCABULARY NINJA**

# Grasshopper (Tier 1)

**praise**

**shout**

**view**

**book**

**story**



**VOCABULARY NINJA**

# **Shinobi (Tier 2)**

**impact  
beyond  
mission  
dedicated  
connect**



**VOCABULARY NINJA**



# Grasshopper Word of the Day

Word of the Day:

Pronunciation / Syllables

praise  
(praise)

Word Class  
(verb / noun)

Definition:

If you praise someone or something, you express approval for their achievements or qualities.



Jeremy was given lots of **praise** for his reading.

Phrases:

received praise for

always liked being praised

Synonym:

commend

applaud

Antonym:

criticize

Rhyme:

raise

plays

Link Word:

positive

reward



# Grasshopper Word of the Day

Word of the Day:

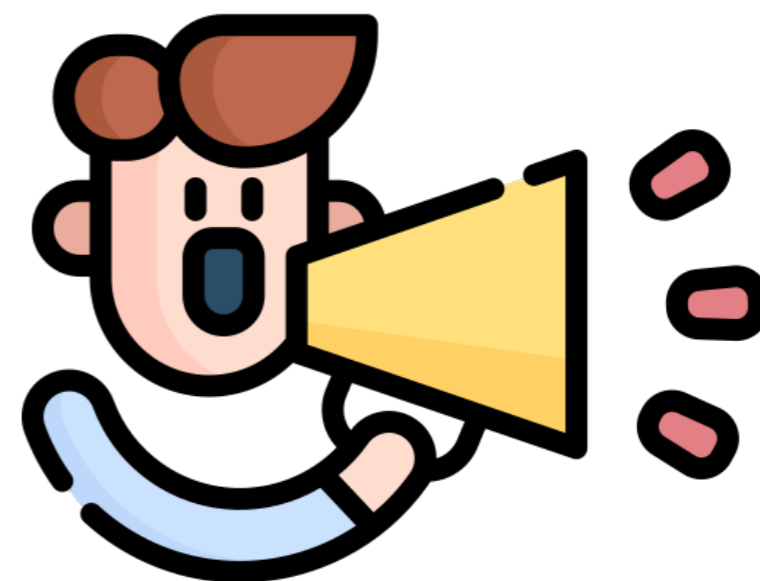
shout  
(*shout*)

Word Class  
(verb)

Pronunciation / Syllables

## Definition:

If you shout, you say something very loudly, usually because you want people a long distance away to hear you or because you are angry.



Mr Robson **shouted** across the playground.

Phrases:

shouted loudly at

was shouting at

Synonym:

yell

cry

Antonym:

whisper

Rhyme:

about

doubt

Link Word:

loudly

angrily



# Grasshopper Word of the Day

Word of the Day:

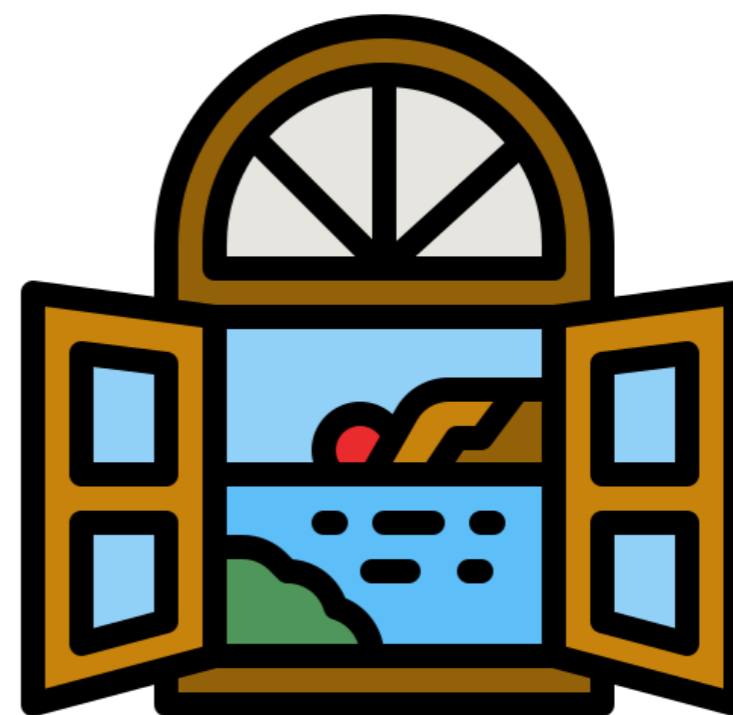
Pronunciation / Syllables

**view**  
(view)

Word Class  
(noun)

## Definition:

The view from a window or high place is everything which can be seen from that place, especially when it is considered to be beautiful.



The **view** out of the window was very beautiful.

Phrases:

a breath-taking view

a view so beautiful, that

Synonym:

sight

scene

Antonym:

Rhyme:

through

who

Link Word:

wildlife

scene



# Grasshopper Word of the Day

Word of the Day:

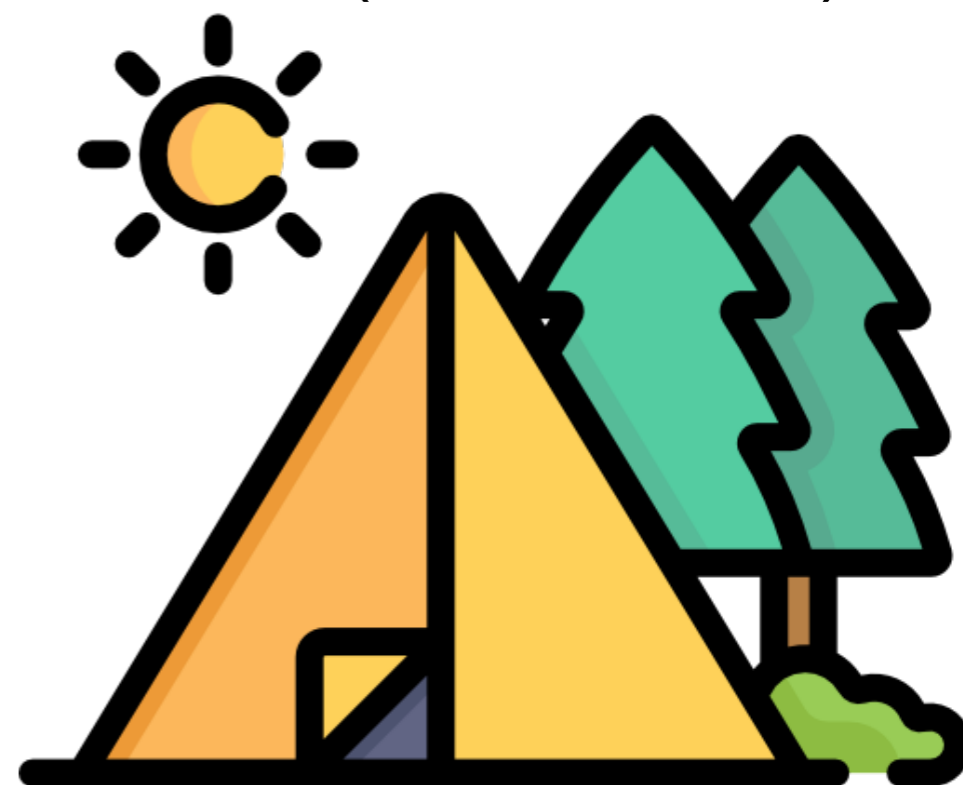
Pronunciation / Syllables

book  
(book)

Word Class  
(verb / noun)

## Definition:

When you book something such as a hotel room or a ticket, you arrange to have it or use it at a particular time.



My family had **booked** to go camping.

Phrases:

had booked early

booked the

Synonym:

reserve  
order

Antonym:

Rhyme:

look  
took

Link Word:

camping  
space



# Grasshopper Word of the Day

Word of the Day:

Pronunciation / Syllables

story  
(sto-ry)

Word Class  
(noun)

Definition:

A story is a description of imaginary people and events, which is written or told in order to entertain.



Mia read her **story** to the class.

Phrases:

a delicious story

the story was

Synonym:

tale

yarn

Antonym:

Rhyme:

glory

inventory

Link Word:

time

book



# Shinobi Word of the Day

Word of the Day:

Pronunciation / Syllables

impact  
(*im-pact*)

Word Class  
(verb)

## Definition:

The impact that something has on a situation, process, or person is a sudden and powerful effect that it has on them.



The **impact** of littering was becoming worse.

Phrases:

started to impact the

the impact on

Synonym:

effect

Antonym:

Prefix / Suffix:

post-

Rhyme:

fact

Link Word:

positive

consequences

act

negative



# Shinobi Word of the Day

Word of the Day:

Pronunciation / Syllables

beyond  
(be-yond)

Word Class  
(preposition)

Definition:

If something is beyond a place or barrier, it is on the other side of it.



Tim looked out **beyond** the trees.

Phrases:

was far beyond the

travelled beyond the

Synonym:

far off

past

Antonym:

near

close

Prefix / Suffix:

Rhyme:

respond

pond

Link Word:

forest

buildings



# Shinobi Word of the Day

Word of the Day:

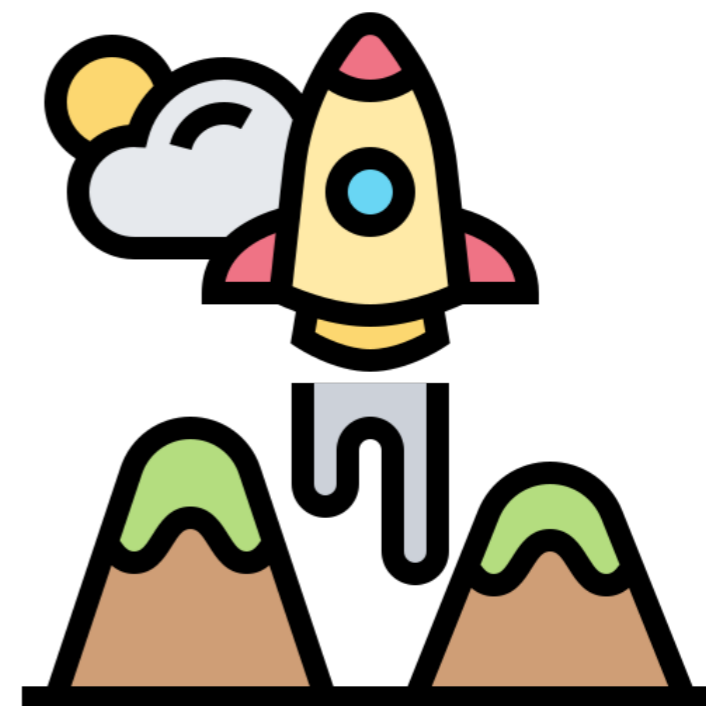
**mission**  
(*mis-sion*)

Word Class  
(noun)

Pronunciation / Syllables

## Definition:

A mission is an important task that people are given to do, especially one that involves travelling to another country.



It was Ahmed's **mission** to use less electricity.

Phrases:

a dangerous mission to

the mission required

Synonym:

Antonym:

Prefix / Suffix:

Rhyme:

Link Word:

assignment

operation

position

condition

difficult

important



# Shinobi Word of the Day

Word of the Day:

**dedicated**  
(ded-i-cat-ed)

Word Class  
(adjective)

Pronunciation / Syllables

## Definition:

You use dedicated to describe someone who enjoys a particular activity very much and spends a lot of time doing it.



Fran was **dedicated** to learning new languages.

Phrases:

completely dedicated to

a dedicated servant of

Synonym:

committed

devoted

Antonym:

indifferent

apathetic

Prefix / Suffix:

-tion

-ing

Rhyme:

educated

Link Word:

person

group



# Shinobi Word of the Day

Word Class  
(verb)

Word of the Day:

**connect**  
(con-nect)

Pronunciation / Syllables

## Definition:

If something or someone connects one thing to another, or if one thing connects to another, the two things are joined together.



Simon needed to **connect** to the Wi-Fi.

Phrases:

needed to connect with

connect to the

Synonym:

attach  
join

Antonym:

disconnect

Prefix / Suffix

re-  
-ing

Rhyme:

effect  
project

Link Word:

family  
internet

# Vocabulary Laboratory



Describe / Definition:

Use it in a sentence:

**Focus Word** (write below):

**Word Class:**

**Synonyms:**

(words with same / similar meaning)

**Antonyms:**

(words with opposite meaning)

**Draw your sentence:**

**Rhymes:**

(words that sound the same)

**Link Words:**

(Example: football = pitch, team, player)

# Vocabulary Visualiser

Draw the  
**Grasshopper** words  
and bring them to life.



Word: praise

Word: shout

Word: view

Word: story



# Vocabulary Visualiser

Draw the **Shinobi**  
words and bring  
them to life.



Word: impact

Word: mission

Word: dedicated

Word: connect



# Matching Meanings

Draw lines from the **Grasshopper** words to their definitions.



## Grasshopper Word

praise

shout

view

book

story

## Grasshopper Definitions

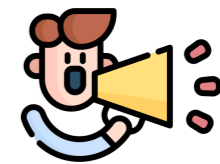
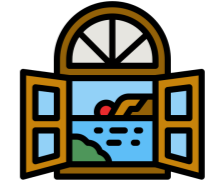
The \*\*\* from a window or high place is everything which can be seen from that place, especially when it is considered to be beautiful.

If you \*\*\* someone or something, you express approval for their achievements or qualities.

When you \*\*\* something such as a hotel room or a ticket, you arrange to have it or use it at a particular time.

If you \*\*, you say something very loudly, usually because you want people a long distance away to hear you or because you are angry.

A \*\*\* is a description of imaginary people and events, which is written or told in order to entertain.



# Matching Meanings

Draw lines from the **Shinobi** words to their definitions.

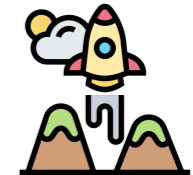


## Shinobi Word

## Shinobi Definitions

impact

A \*\*\* is an important task that people are given to do, especially one that involves travelling to another country.



beyond

You use \*\*\* to describe someone who enjoys a particular activity very much and spends a lot of time doing it.



mission

The \*\*\* that something has on a situation, process, or person is a sudden and powerful effect that it has on them.



dedicated

If something or someone \*\*\* one thing to another, or if one thing \*\*\* to another, the two things are joined together.



connect

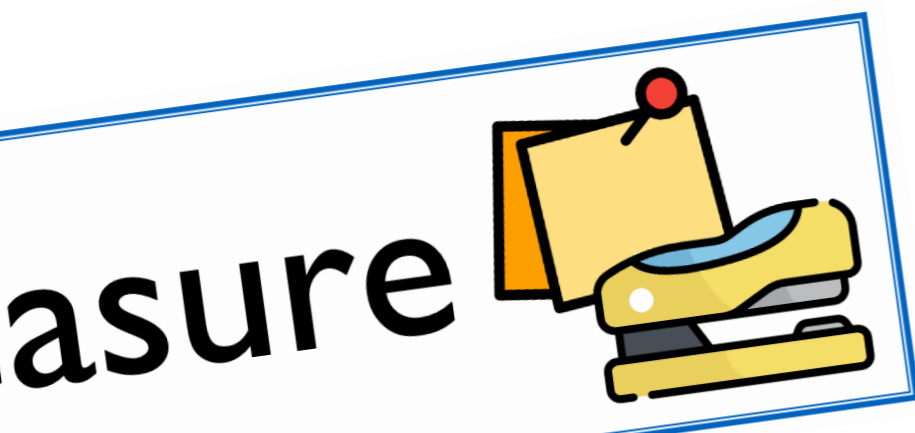
If something is \*\*\* a place or barrier, it is on the other side of it.





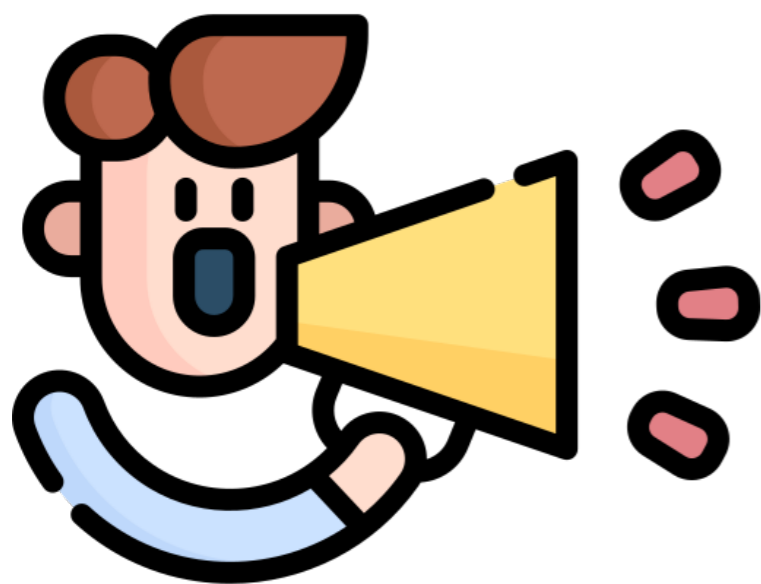
# Display Slips

The following slides are for classroom display. As you teach each Word of the Day, words can be displayed in the classroom to enable pupils to use the taught vocabulary in an independent manner.





praise

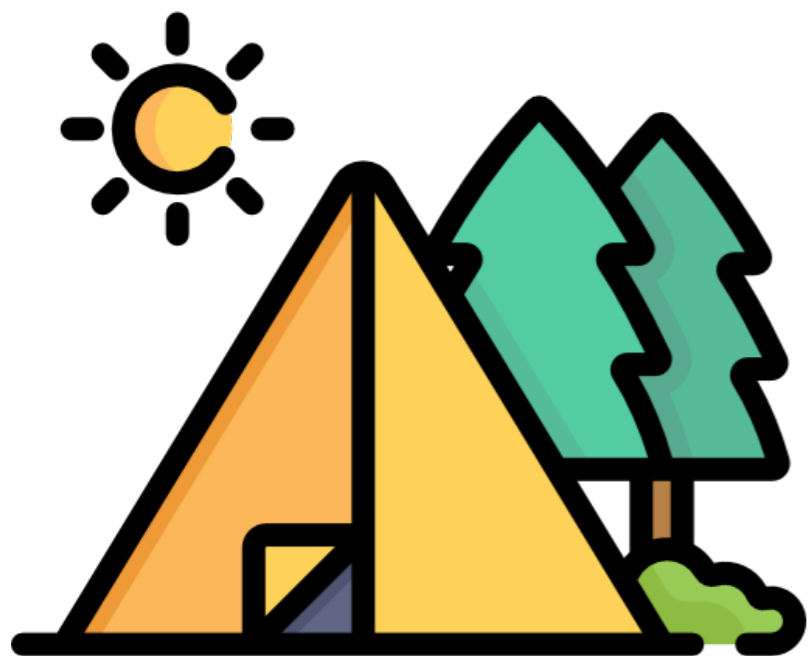
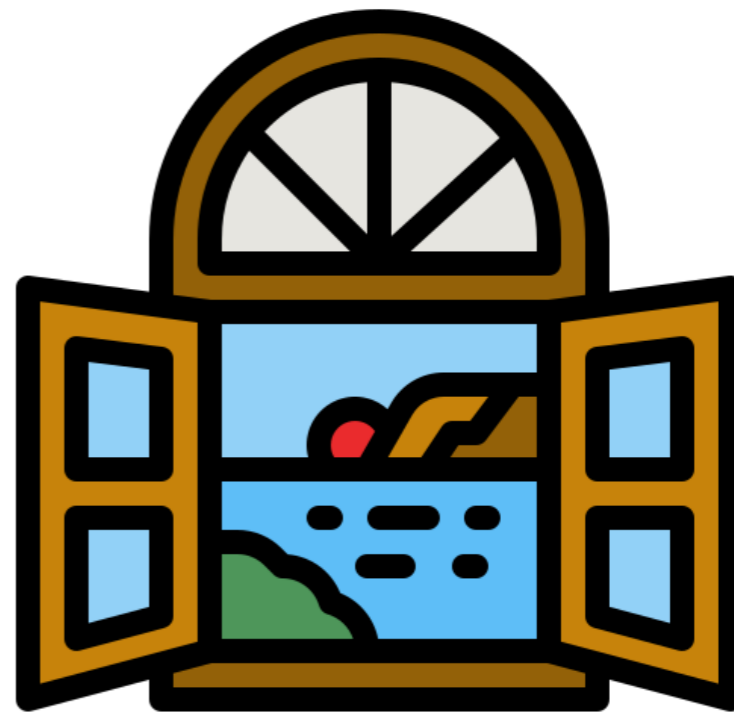


shout





# view



# book





# story

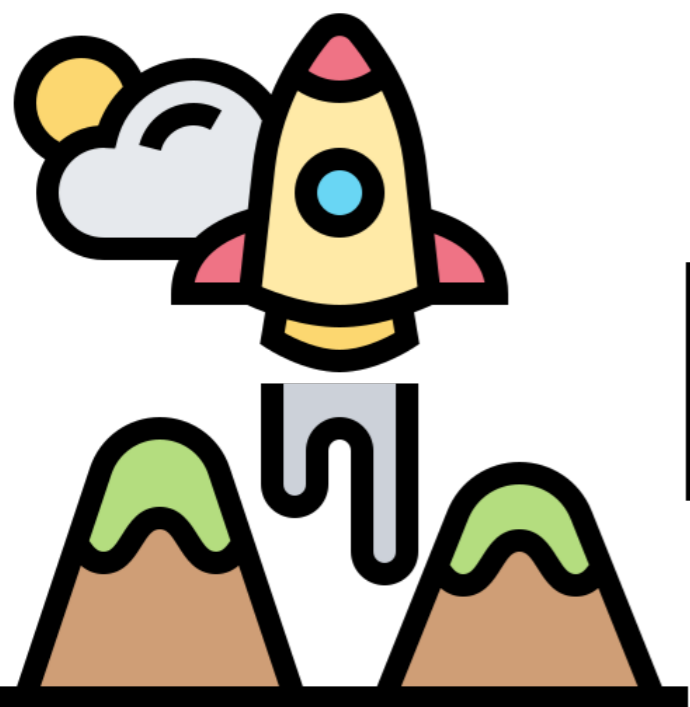
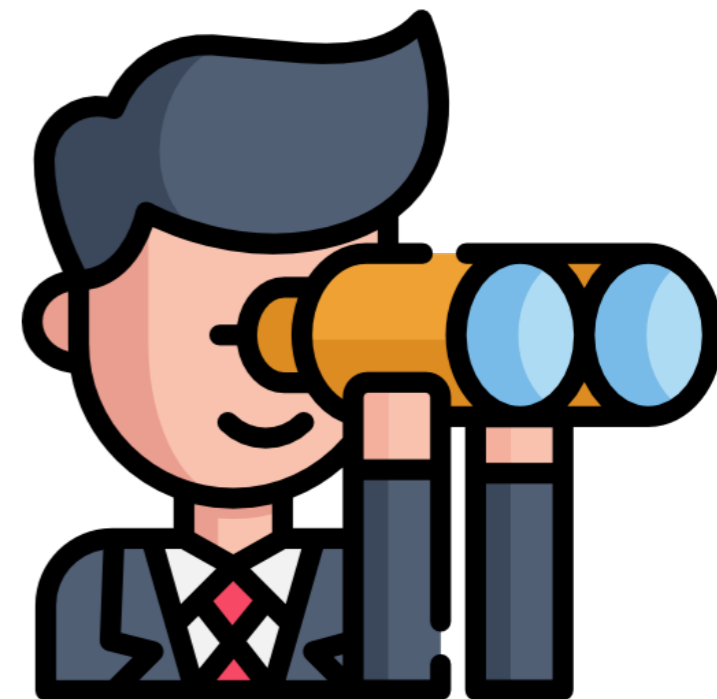


# impact





# beyond



# mission





# dedicated



# connect

