

Word of the Day

Spring Term 2022

Week 23 – 7th March 2022



This Week's Words

Grasshopper

- tear
- office
- spare
- chipped
- lift

Shinobi

- tolerate
- mutter
- fixation

VN VOCABULARY NINJA

Grasshopper Word of the Day

Word of the Day: heart
(heart)

Word Class: (noun)

Definition:
Your heart is the organ in your chest that pumps the blood around your body. People also use heart to refer to the area of their chest that is closest to their heart.

My heart was beating in my chest.

Rhyme: heart was beating
part
start

Link Word: blood
body

Shinobi Word of the Day

Word of the Day: calamitous
(ca-lam-i-tous)

Word Class: (adjective)

Definition:
If you describe an event or situation as calamitous, you mean it is very unfortunate or serious.

The calamitous twins destroyed the play room.

Phrases: the calamitous pair
completely calamitous

Synonym: disastrous
devastating

Antonym: good

Prefix / Suffix:

Rhyme: glamorous

Link Word: disaster
bad

'Words unlock the doors to a world of understanding...'

This Week's Words

Grasshopper

carry

awake

sob

middle

globe

Shinobi

wary

frugal

parched

collaborate

static



VOCABULARY NINJA

Grasshopper (Tier 1)

carry

awake

sob

middle

globe



VOCABULARY NINJA

Shinobi (Tier 2)

wary

frugal

parched

collaborate

static



VOCABULARY NINJA



Grasshopper Word of the Day

Word of the Day:

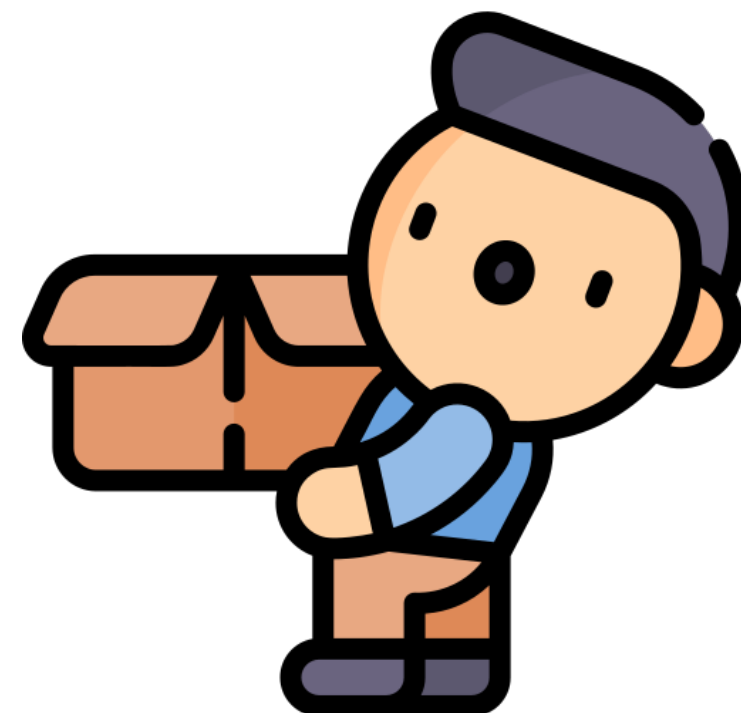
Pronunciation / Syllables

carry
(*car-ry*)

Word Class
(verb)

Definition:

If you carry something, you take it with you, holding it so that it does not touch the ground.



Roberto **carried** the box of books.

Phrases:

carried the heavy

was carrying the

Synonym:

transfer

move

Antonym:

Rhyme:

Link Word:

heavy

across



Grasshopper Word of the Day

Word of the Day:

awake
(a-wake)

Word Class
(adjective)

Pronunciation / Syllables

Definition:

Someone who is awake is not sleeping.



Mark was **awake** before his alarm.

Phrases:

was wide-awake before

always awake on

Synonym:

wide awake

Antonym:

asleep

Rhyme:

make

take

Link Word:

day

wide



Grasshopper Word of the Day

Word of the Day:

Pronunciation / Syllables

sob
(sob)

Word Class
(verb)

Definition:

When someone sobs, they
cry in a noisy way,
breathing in short breaths.



Mary's sister was **sobbing** before bed.

Phrases:

sobbed non-stop

sobbed endlessly

Synonym:

weep

whimper

Antonym:

Rhyme:

job

rob

Link Word:

uncontrollably

sadness



Grasshopper Word of the Day

Word of the Day:

middle
(*mid-dle*)

Word Class
(noun)

Pronunciation / Syllables

Definition:

The middle of something is the part of it that is furthest from its edges, ends, or outside surface.



Mia was in the **middle** of Fran and Ruby.

Phrases:

in the middle of

the middle of the

Synonym:

centre

heart

Antonym:

outside

Rhyme:

riddle

fiddle

Link Word:

outside

inside



Grasshopper Word of the Day

Word of the Day:

Pronunciation / Syllables

globe
(globe)

Word Class
(noun)

Definition:

A globe is a ball-shaped object with a map of the world on it. It is usually fixed on a stand.



We looked at the countries on the globe.

Phrases:

the snow globe was

A globe of the Earth

Synonym:

world

sphere

Antonym:

Rhyme:

probe

robe

Link Word:

ball

sphere



Shinobi Word of the Day

Word of the Day:

Pronunciation / Syllables

wary
(war-y)

Word Class
(adjective)

Definition:

If you are wary of something or someone, you are cautious because you do not know much about them and you believe they may be dangerous or cause problems.



Mia was **wary** about crossing the busy road.

Phrases:

very wary of

wary and unsure about

Synonym:

careful

cautious

Antonym:

unwary

trustful

Prefix / Suffix:

-ily

un-

Rhyme:

hairy

scary

Link Word:

about

of



Shinobi Word of the Day

Word of the Day:

Pronunciation / Syllables

frugal
(fru-gal)

Word Class
(adjective)

Definition:

People who are frugal or who live frugal lives do not eat much or spend much money on themselves.



The family needed to be **frugal** with their money.

Phrases:

sensible and frugal

frugal-minded

Synonym:

thrifty

sparing

Antonym:

extravagant

Prefix / Suffix:

-ly

Rhyme:

Link Word:

saving

safe



Shinobi Word of the Day

Word of the Day:

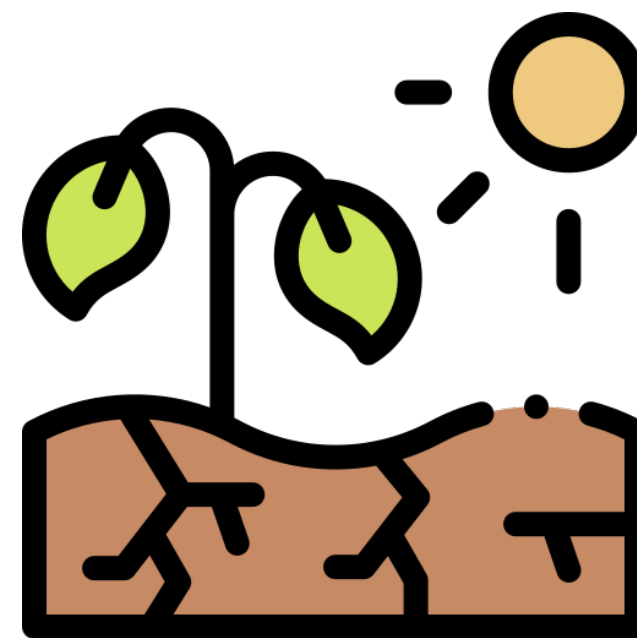
parched
(*parched*)

Word Class
(adjective)

Pronunciation / Syllables

Definition:

If something, especially the ground or a plant, is parched, it is very dry, because there has been no rain.



The ground was **parched** and dry.

Phrases:

cracked and parched

parched by the

Synonym:

dry

withered

Antonym:

wet

soaking

Prefix / Suffix:

-ed

Rhyme:

marched

arched

Link Word:

land

thirsty



Shinobi Word of the Day

Word of the Day:

collaborate

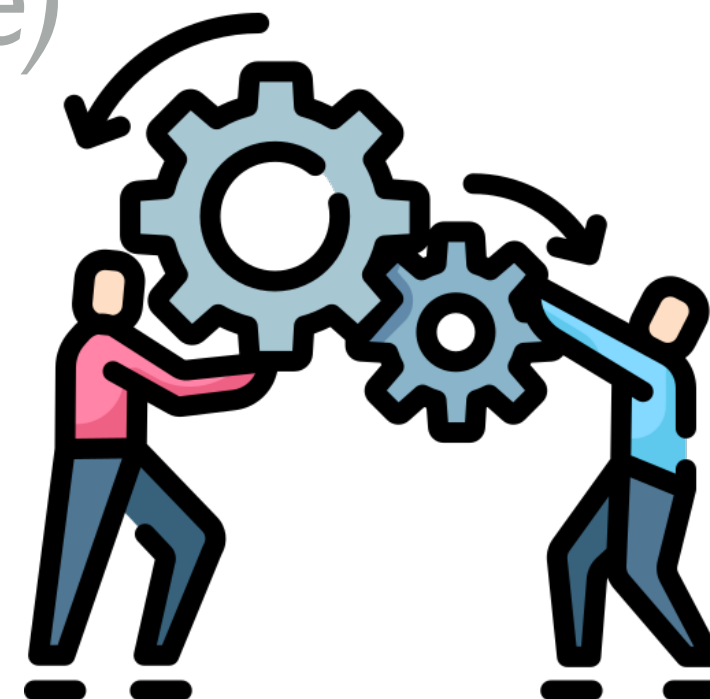
Word Class
(verb)

Pronunciation / Syllables

(*col-lab-o-rate*)

Definition:

When one person or group collaborates with another, they work together, especially on a book or on some research.



We collaborated on our science homework.

Phrases:

worked collaboratively

always collaborate

Synonym:

cooperate

unite

Antonym:

resist

Prefix / Suffix:

-tion

-ed

Rhyme:

elaborate

exaggerate

Link Word:

project

game



Shinobi Word of the Day

Word of the Day:

Pronunciation / Syllables

static
(*stat-ic*)

Word Class
(adjective)

Definition:

Something that is static does not move or change.



The **static** scarecrow looked lonely in the huge field.

Phrases:

static and constant

static and fixed

Synonym:

fixed

constant

Antonym:

variable

Prefix / Suffix

Rhyme:

dramatic

problematic

Link Word:

person

vehicle

Vocabulary Laboratory



Describe / Definition:

Use it in a sentence:

Focus Word (write below):

Word Class:

Synonyms:

(words with same / similar meaning)

Antonyms:

(words with opposite meaning)

Draw your sentence:

Rhymes:

(words that sound the same)

Link Words:

(Example: football = pitch, team, player)

Vocabulary Visualiser

Draw the
Grasshopper words
and bring them to life.



Word: carry

Word: awake

Word: sob

Word: globe



Vocabulary Visualiser

Draw the **Shinobi**
words and bring
them to life.



Word: wary

Word: frugal

Word: parched

Word: collaborate



Matching Meanings

Draw lines from the **Grasshopper** words to their definitions.



Grasshopper Word

Grasshopper Definitions

carry

Someone who is *** is not sleeping.



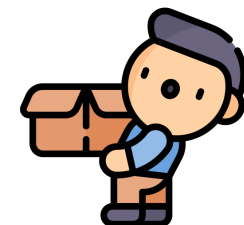
awake

The *** of something is the part of it that is furthest from its edges, ends, or outside surface.



sob

If you *** something, you take it with you, holding it so that it does not touch the ground.



middle

A *** is a ball-shaped object with a map of the world on it. It is usually fixed on a stand.



globe

When someone ***, they cry in a noisy way, breathing in short breaths.



Matching Meanings

Draw lines from the **Shinobi** words to their definitions.

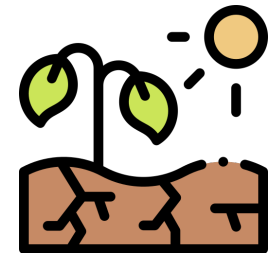


Shinobi Word

Shinobi Definitions

wary

If something, especially the ground or a plant, is ***, it is very dry, because there has been no rain.



frugal

If you are *** of something or someone, you are cautious because you do not know much about them and you believe they may be dangerous or cause problems.



parched

When one person or group *** with another, they work together, especially on a book or on some research.



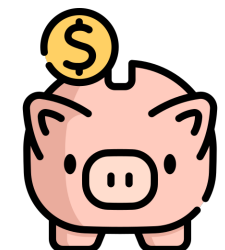
collaborate

Something that is *** does not move or change.



static

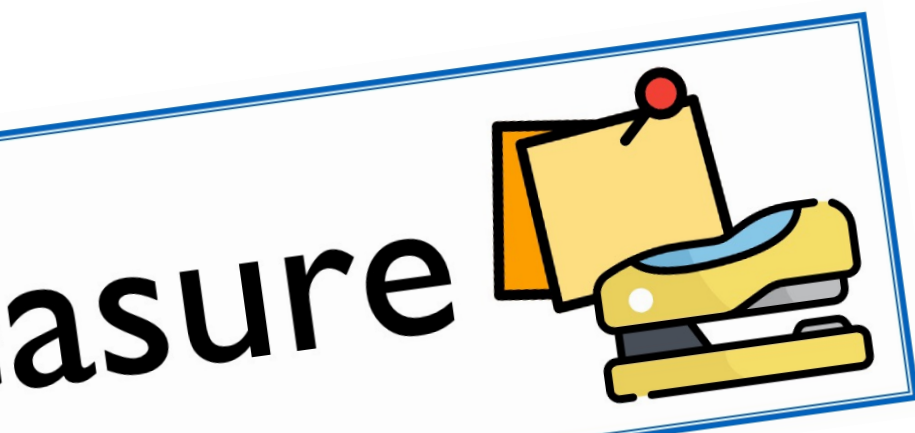
People who are *** or who live *** lives do not eat much or spend much money on themselves.





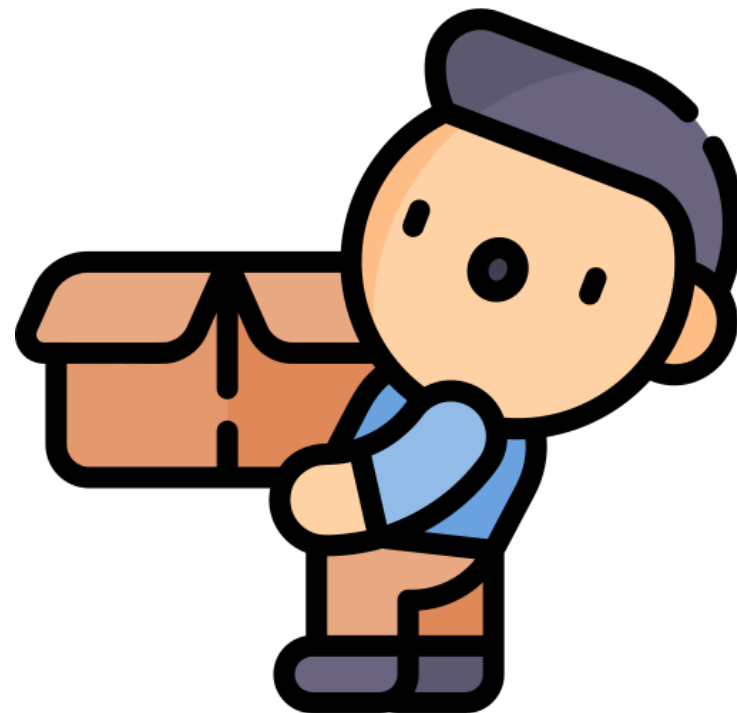
Display Slips

The following slides are for classroom display. As you teach each Word of the Day, words can be displayed in the classroom to enable pupils to use the taught vocabulary in an independent manner.





carry



awake





sob



middle





globe

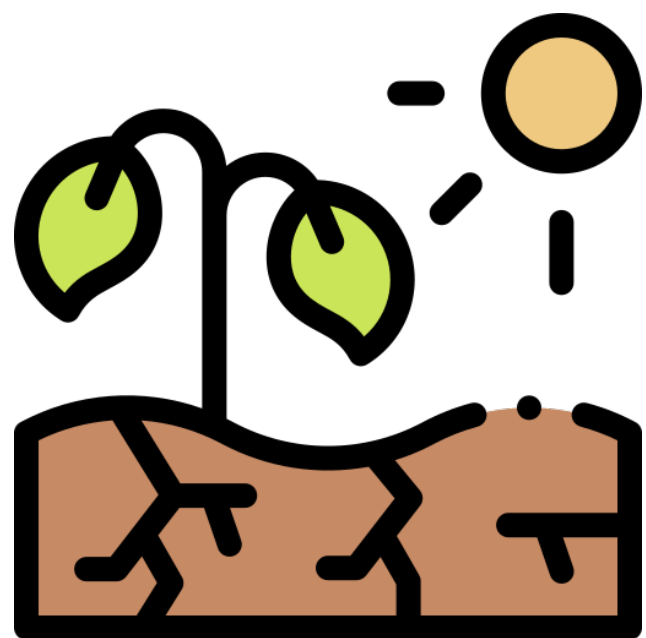


wary





frugal



parched





collaborate



static

