

Word of the Day

Spring Term 2022

Week 26 – 28th March 2022



This Week's Words

Grasshopper

tear
office
spare
chipped
lift

Shinobi

tolerate
mutter
fixation

VN
VOCABULARY NINJA

Grasshopper Word of the Day

Word of the Day: heart
(heart)

Word Class: (noun)

Definition:
Your heart is the organ in your chest that pumps the blood around your body. People also use heart to refer to the area of their chest that is closest to their heart.

My heart was beating in my chest.

Rhyme: heart was beating
part
start

Link Word: blood
body

Shinobi Word of the Day

Word of the Day: calamitous
(ca-lam-i-tous)

Word Class: (adjective)

Definition:
If you describe an event or situation as calamitous, you mean it is very unfortunate or serious.

The calamitous twins destroyed the play room.

Phrases: the calamitous pair
completely calamitous

Synonym: disastrous
devastating

Antonym: good

Prefix / Suffix:

Rhyme: glamorous

Link Word: disaster
bad

'Words unlock the doors to a world of understanding...'

This Week's Words

Grasshopper

random

copy

dusk

fact

material

Shinobi

halt

trepidation

idyllic

tranquil

fulfil



VOCABULARY NINJA

Grasshopper (Tier 1)

random

copy

dusk

fact

material



VOCABULARY NINJA

Shinobi (Tier 2)

halt

trepidation

idyllic

tranquil

fulfil



VOCABULARY NINJA



Grasshopper Word of the Day

Word of the Day:

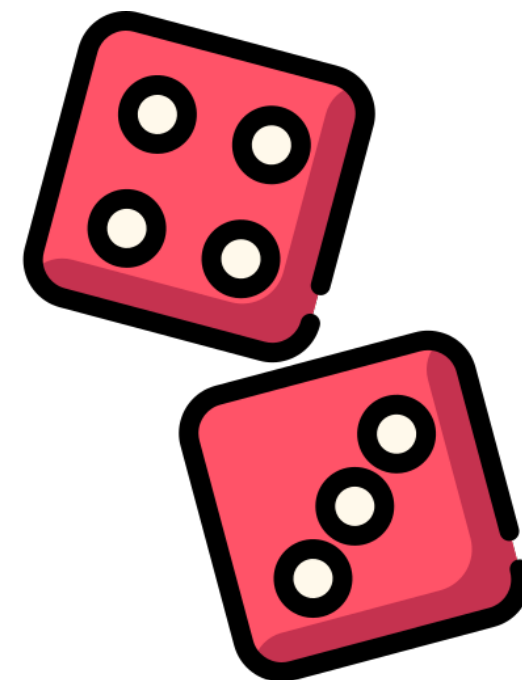
random
(*ran-dom*)

Word Class
(adjective)

Pronunciation / Syllables

Definition:

If you describe events as random, you mean that they do not seem to follow a definite plan or pattern.



Children rolled the dice to get a **random** number.

Phrases:

was so random

a random event

Synonym:

chance
erratic

Antonym:

planned

Rhyme:

tandem

Link Word:

number
event



Grasshopper Word of the Day

Word of the Day:

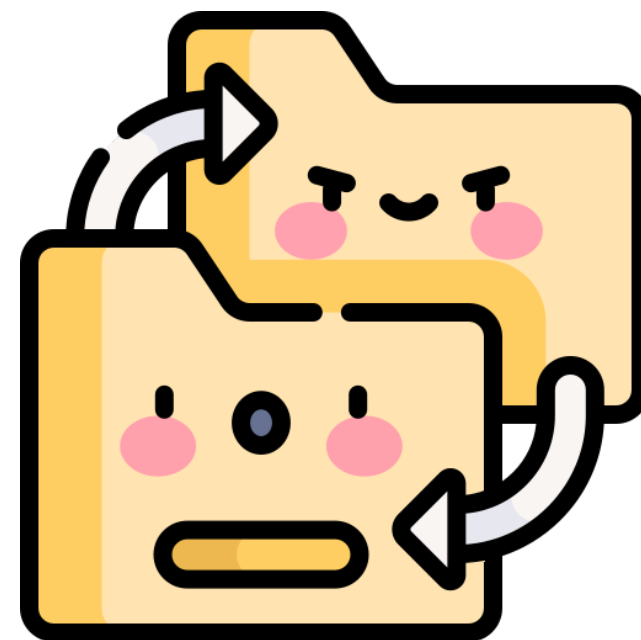
Pronunciation / Syllables

copy
(cop-y)

Word Class
(verb / noun)

Definition:

If you copy a person or what they do, you try to do what they do or try to be like them, usually because you admire them or what they have done.



Alice **copied** out her new spellings.

Phrases:

needed to copy the

decided to copy the

Synonym:

duplicate

replica

Antonym:

Rhyme:

choppy

sloppy

Link Word:

work

file



Grasshopper Word of the Day

Word of the Day:

Pronunciation / Syllables

dusk
(*dusk*)

Word Class
(noun)

Definition:

Dusk is the time just before night when the daylight has almost gone but when it is not completely dark.



They visited the beach at **dusk**.

Phrases:

the dusk sky was

at dusk they visited

Synonym:

twilight

sunset

Antonym:

dawn

daylight

Rhyme:

husk

tusk

Link Word:

dawn

warm



Grasshopper Word of the Day

Word of the Day:

Pronunciation / Syllables

fact
(fact)

Word Class
(noun)

Definition:

When you refer to something as a fact or as fact, you mean that you think it is true or correct.



Mia wanted to discover **facts** about the Arctic.

Phrases:

it was a fact

showed them the facts

Synonym:

reality

Antonym:

lie

fiction

Rhyme:

act

impact

Link Word:

check

learn



Grasshopper Word of the Day

Word of the Day:

material

Word Class
(noun)

Pronunciation / Syllables

(ma-te-ri-al)

Definition:

Materials are the things that you need for a particular activity.



Class 6 collected the **materials** for crafting.

Phrases:

collected materials

a variety of materials

Synonym:

things

items

Antonym:

Rhyme:

serial

cereal

Link Word:

design

create



Shinobi Word of the Day

Word of the Day:

Pronunciation / Syllables

halt
(halt)

Word Class
(verb)

Definition:

When a person or a vehicle halts or when something halts them, they stop moving in the direction they were going and stand still.



Mrs Balharry **halted** the test.

Phrases:

suddenly halted

slowly halted

Synonym:

stop

conclude

Antonym:

start

go

Prefix / Suffix:

-ed

-ing

Rhyme:

salt

fault

Link Word:

process

quickly



Shinobi Word of the Day

Word of the Day: **trepidation**

Word Class
(noun)

Pronunciation / Syllables

(*trep-i-da-tion*)

Definition:

Trepidation is fear or anxiety about something that you are going to do or experience.



With **trepidation** and fear, they opened the door.

Phrases:

full of trepidation

felt trepidation

Synonym:

fear

dread

Antonym:

calm

composure

Prefix / Suffix:

Rhyme:

situation

frustration

Link Word:

room

trip



Shinobi Word of the Day

Word of the Day:

Pronunciation / Syllables

idyllic
(i-dyl-lic)

Word Class
(adjective)

Definition:

If you describe something as idyllic, you mean that it is extremely pleasant, simple, and peaceful without any difficulties or dangers.



The school field was **idyllic** this morning.

Phrases:

was an idyllic place

completely idyllic

Synonym:

perfect

ideal

Antonym:

hellish

Prefix / Suffix:

-ally

Rhyme:

acrylic

Link Word:

location

home



Shinobi Word of the Day

Word of the Day:

Pronunciation / Syllables

tranquil
(*tran-quiet*)

Word Class
(adjective)

Definition:

Something that is tranquil is calm and peaceful.



Miss Jones' classroom was **tranquil**, yet busy.

Phrases:

calm and tranquil

quiet and tranquil

Synonym:

restful

calm

Antonym:

busy

excitable

Prefix / Suffix:

-ity

Rhyme:

ankle

Link Word:

scene

place



Shinobi Word of the Day

Word of the Day:

Pronunciation / Syllables

fulfil
(*ful-fil*)

Word Class
(verb)

Definition:

If you fulfil something such as a promise, dream, or hope, you do what you said or hoped you would do.



Each child set a goal they hoped to fulfil.

Phrases:

hoped to fulfil

fulfilled their dream

Synonym:

attain

satisfy

Antonym:

Prefix / Suffix

-ment

-ed

Rhyme:

still

until

Link Word:

dream

goal

Vocabulary Laboratory



Describe / Definition:

Use it in a sentence:

Focus Word (write below):

Word Class:

Synonyms:

(words with same / similar meaning)

Antonyms:

(words with opposite meaning)

Draw your sentence:

Rhymes:

(words that sound the same)

Link Words:

(Example: football = pitch, team, player)

Vocabulary Visualiser

Draw the
Grasshopper words
and bring them to life.



Word: random

Word: copy

Word: dusk

Word: fact



Vocabulary Visualiser

Draw the **Shinobi**
words and bring
them to life.



Word: halt

Word: trepidation

Word: idyllic

Word: tranquil



Matching Meanings

Draw lines from the **Grasshopper** words to their definitions.

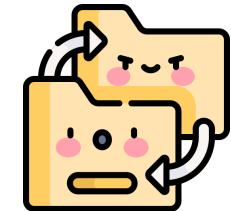


Grasshopper Word

Grasshopper Definitions

random

If you *** a person or what they do, you try to do what they do or try to be like them, usually because you admire them or what they have done.



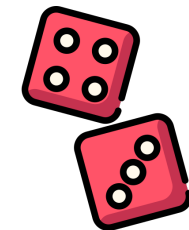
copy

When you refer to something as a *** or as ***, you mean that you think it is true or correct.



dusk

If you describe events as ***, you mean that they do not seem to follow a definite plan or pattern.



fact

*** are the things that you need for a particular activity.



material

*** is the time just before night when the daylight has almost gone but when it is not completely dark.



Matching Meanings

Draw lines from the **Shinobi** words to their definitions.



Shinobi Word

Shinobi Definitions

halt

*** is fear or anxiety about something that you are going to do or experience.



trepidation

If you describe something as ***, you mean that it is extremely pleasant, simple, and peaceful without any difficulties or dangers.



idyllic

When a person or a vehicle *** or when something *** them, they stop moving in the direction they were going and stand still.



tranquil

If you *** something such as a promise, dream, or hope, you do what you said or hoped you would do.



fulfil

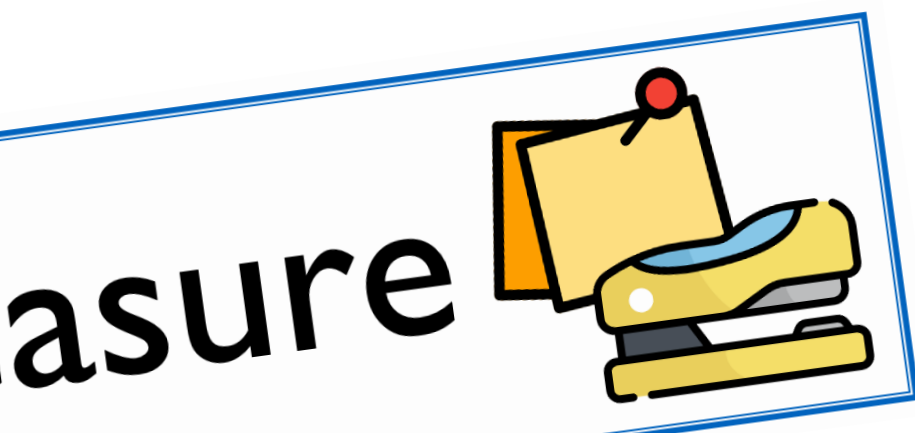
Something that is *** is calm and peaceful.





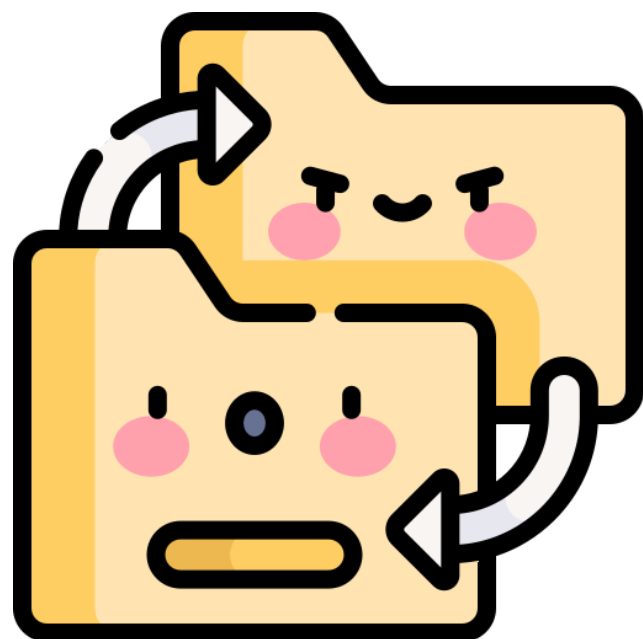
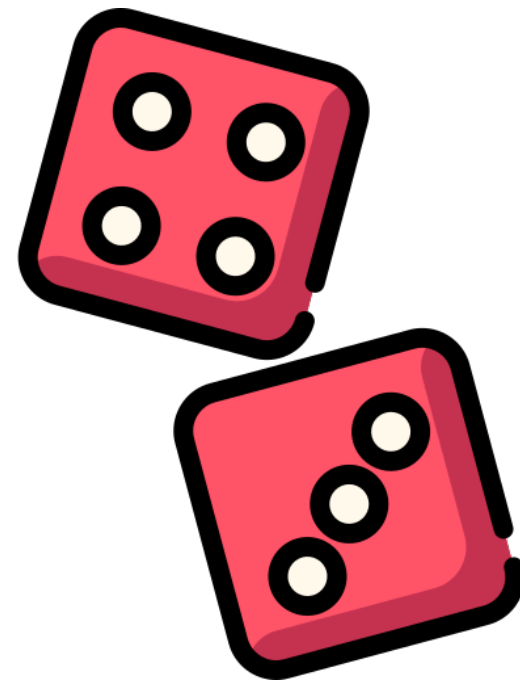
Display Slips

The following slides are for classroom display. As you teach each Word of the Day, words can be displayed in the classroom to enable pupils to use the taught vocabulary in an independent manner.





random

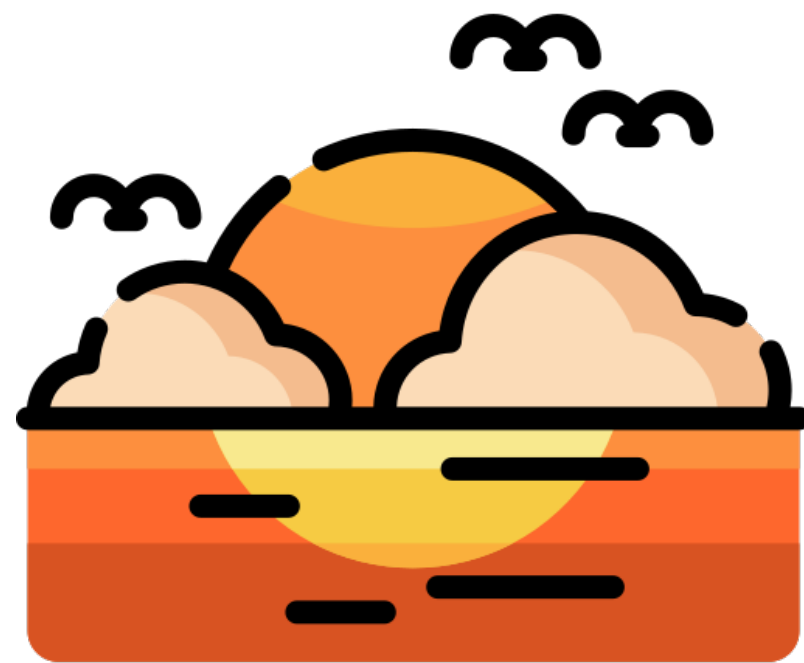


copy





dusk



fact





material



halt





trepidation



idyllic





tranquil



fulfil

