

# Word of the Day

## Spring Term 2022

Week 20 – 7<sup>th</sup> February 2022



### This Week's Words

**Grasshopper**

tear  
office  
spare  
chipped  
lift

**Shinobi**

tolerate  
mutter  
fixation

**VN**  
VOCABULARY NINJA

**Grasshopper Word of the Day**

**Word of the Day:** heart  
*(heart)*

**Word Class:** (noun)

**Definition:**  
Your heart is the organ in your chest that pumps the blood around your body. People also use heart to refer to the area of their chest that is closest to their heart.

**My heart was beating in my chest.**

**Rhyme:** heart was beating  
part  
start

**Link Word:** blood  
body

**Shinobi Word of the Day**

**Word of the Day:** calamitous  
*(ca-lam-i-tous)*

**Word Class:** (adjective)

**Definition:**  
If you describe an event or situation as calamitous, you mean it is very unfortunate or serious.

**The calamitous twins destroyed the play room.**

**Phrases:** the calamitous pair  
completely calamitous

**Synonym:** disastrous  
devastating

**Antonym:** good

**Prefix / Suffix:**

**Rhyme:** glamorous

**Link Word:** disaster  
bad

*'Words unlock the doors to a world of understanding...'*

# This Week's Words

## Grasshopper

**spin**

**shade**

**friendly**

**split**

**heard**

## Shinobi

**trek**

**spiral**

**swept**

**guardian**

**intruder**



**VOCABULARY NINJA**

# Grasshopper (Tier 1)

**spin**

**shade**

**friendly**

**split**

**heard**



**VOCABULARY NINJA**

# Shinobi (Tier 2)

**trek**

**spiral**

**swept**

**guardian**

**intruder**



**VOCABULARY NINJA**



# Grasshopper Word of the Day

Word of the Day:

Pronunciation / Syllables

spin  
(spin)

Word Class  
(verb)

Definition:

If something spins or if you spin it, it turns quickly around a central point.



The **spinning** fidget was so much fun.

Phrases:

spin and spin

endless spinning

Synonym:

rotate

turn

Antonym:

Rhyme:

win

thin

Link Word:

slowly

rapidly



# Grasshopper Word of the Day

Word of the Day:

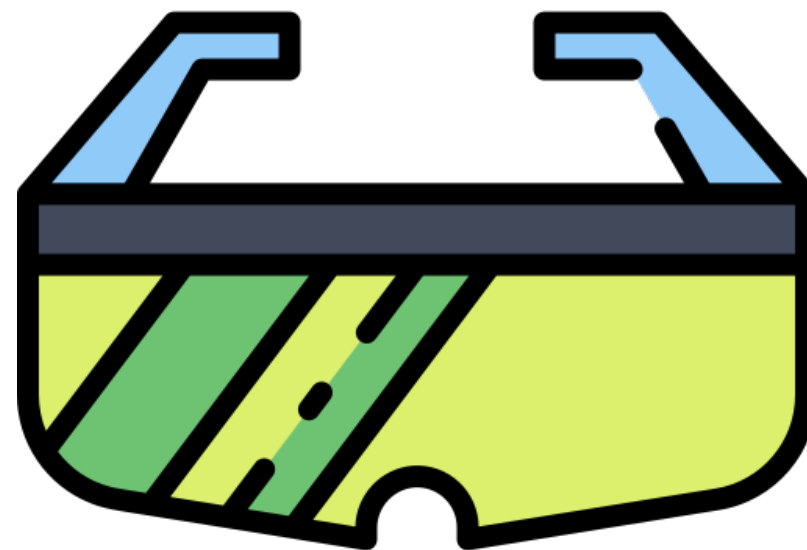
Pronunciation / Syllables

shade  
(shade)

Word Class  
(noun / verb)

Definition:

Shade is an area of darkness under or next to an object such as a tree, where sunlight does not reach.



The sunglasses **shaded** my eyes from the sun.

Phrases:

shade from the sun

sit in the shade

Synonym:

shadow

Antonym:

glare

light

Rhyme:

made

laid

Link Word:

from

under



# Grasshopper Word of the Day

Word of the Day:

friendly  
(friend-ly)

Word Class  
(adjective)

Pronunciation / Syllables

Definition:

If someone is friendly, they behave in a pleasant, kind way, and like to be with other people.



Emily was always very friendly.

Phrases:

extremely friendly

friendly and polite

Synonym:

warm

Antonym:

unfriendly

hostile

Rhyme:

Link Word:

people

behaviour



# Grasshopper Word of the Day

Word of the Day:

Pronunciation / Syllables

split  
(split)

Word Class  
(verb)

Definition:

If something splits or if you split it, it is divided into two or more parts.



They **split** the screen so both children could play.

Phrases:

split in half

split into two teams

Synonym:

divide

Antonym:

Rhyme:

sit

fit

Link Word:

screen

desert





# Grasshopper Word of the Day

Word of the Day:

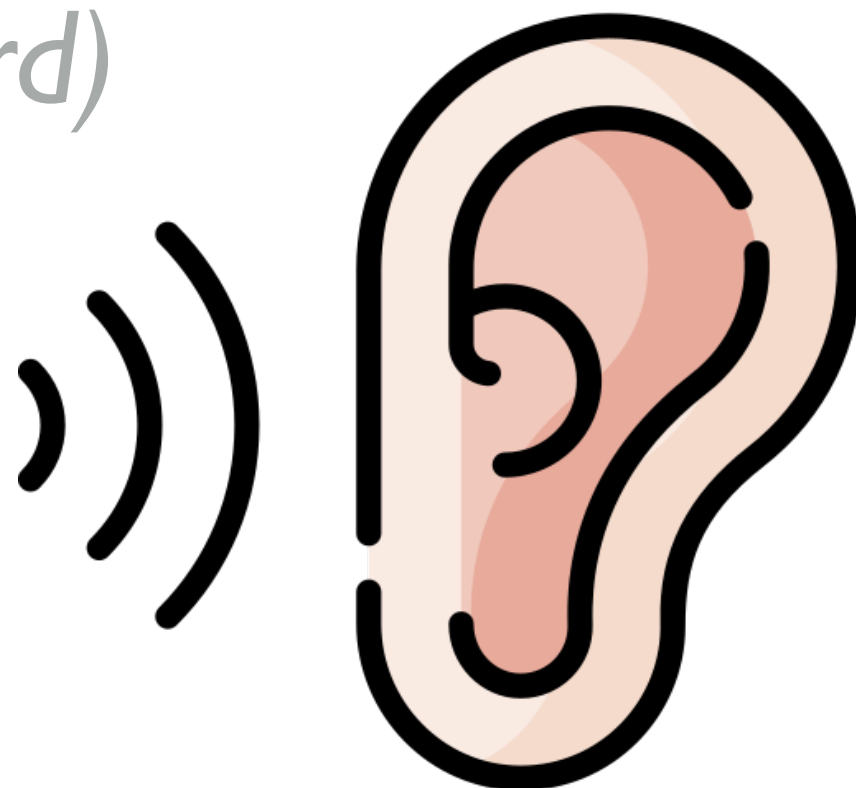
Pronunciation / Syllables

heard  
(heard)

Word Class  
(verb)

Definition:

When you hear a sound, you become aware of it through your ears.



Alfie **heard** Brennan shouting on the playground.

Phrases:

heard in the distance

heard coming from the

Synonym:

Antonym:

Rhyme:

Link Word:

bird

screaming

third

whispering



# Shinobi Word of the Day

Word of the Day:

Pronunciation / Syllables

trek  
(*trek*)

Word Class  
(verb / noun)

Definition:

If you trek somewhere, you go on a journey across difficult country, usually on foot.



Mira **trekked** across the wasteland.

Phrases:

lengthy trek

dangerous trek across

Synonym:

journey

slog

Antonym:

Prefix / Suffix:

-ed

-ing

Rhyme:

neck

wreck

Link Word:

across

through



# Shinobi Word of the Day

Word of the Day:

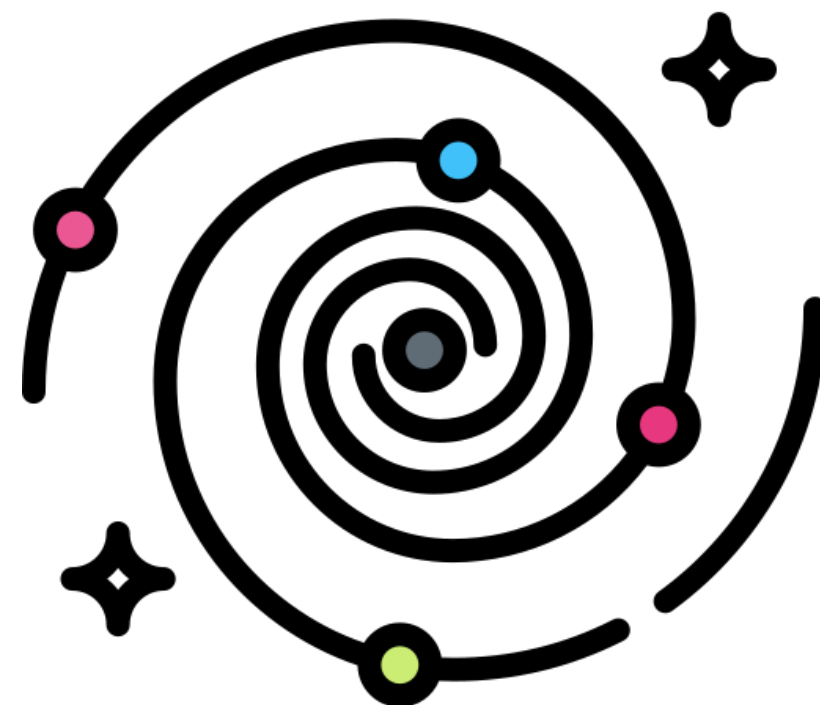
Pronunciation / Syllables

**spiral**  
(*spi-ral*)

Word Class  
(verb / noun)

Definition:

If something spirals or is spiralled somewhere, it grows or moves in a spiral curve.



The planets and stars **spiralled** in the night sky.

Phrases:

spiralled upwards

spiralled away from

Synonym:

twisting

winding

Antonym:

Prefix / Suffix:

-ing

-ed

Rhyme:

viral

Link Word:

firework

out of control



# Shinobi Word of the Day

Word Class  
(verb)

Word of the Day:

swept  
(swept)

Pronunciation / Syllables

Definition:

If something sweeps from one place to another, it moves there extremely quickly.



Out of nowhere, the rain **swept** across the playground.

Phrases:

quickly swept across

quickly swept through

Synonym:

Antonym:

Prefix / Suffix:

Rhyme:

Link Word:

engulf

crept

heat

overwhelm

wept

weather



# Shinobi Word of the Day

Word of the Day:

Pronunciation / Syllables

guardian  
(guard-i-an)

Word Class  
(noun)

Definition:

The guardian of something is someone who defends and protects it.



Frank was the **guardian** of the glue sticks.

Phrases:

experienced guardian

brave guardian

Synonym:

protector

defender

Antonym:

Prefix / Suffix:

-s

Rhyme:

Link Word:

of

riches



# Shinobi Word of the Day

Word of the Day:

**intruder**  
(in-trud-er)

Word Class  
(noun)

Pronunciation / Syllables

## Definition:

An intruder is a person who goes into a place where they are not supposed to be.



There had been an **intruder** in the classroom.

Phrases:

unwanted intruder

the unknown intruder

Synonym:

trespasser

raider

Antonym:

Prefix / Suffix

Rhyme:

cruder

shrewder

Link Word:

sneaky

illegal

# Vocabulary Laboratory



Describe / Definition:

Use it in a sentence:

**Focus Word** (write below):

**Word Class:**

**Synonyms:**

(words with same / similar meaning)

**Antonyms:**

(words with opposite meaning)

**Draw your sentence:**

**Rhymes:**

(words that sound the same)

**Link Words:**

(Example: football = pitch, team, player)

# Vocabulary Visualiser

Draw the  
**Grasshopper** words  
and bring them to life.



Word: spin

Word: shade

Word: split

Word: heard





# Vocabulary Visualiser

Draw the **Shinobi**  
words and bring  
them to life.



Word: trek

Word: spiral

Word: intruder

Word: swept



# Matching Meanings

Draw lines from the **Grasshopper** words to their definitions.



## Grasshopper Word

## Grasshopper Definitions

spin

If someone is \*\*\*, they behave in a pleasant, kind way, and like to be with other people.



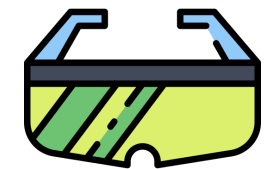
shade

If something \*\*\* or if you \*\*\* it, it turns quickly around a central point.



friendly

\*\*\* is an area of darkness under or next to an object such as a tree, where sunlight does not reach.



split

When you \*\*\* a sound, you become aware of it through your ears.



heard

If something \*\*\* or if you \*\*\* it, it is divided into two or more parts.



# Matching Meanings

Draw lines from the **Shinobi** words to their definitions.

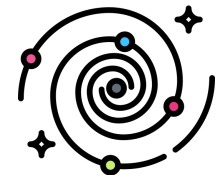


## Shinobi Word

## Shinobi Definitions

trek

If something \*\*\* or is \*\*\* somewhere, it grows or moves in a \*\*\* curve.



spiral

If something \*\*\* from one place to another, it moves there extremely quickly.



swept

The \*\*\* of something is someone who defends and protects it.



guardian

An \*\*\* is a person who goes into a place where they are not supposed to be.



intruder

If you \*\*\* somewhere, you go on a journey across difficult country, usually on foot.





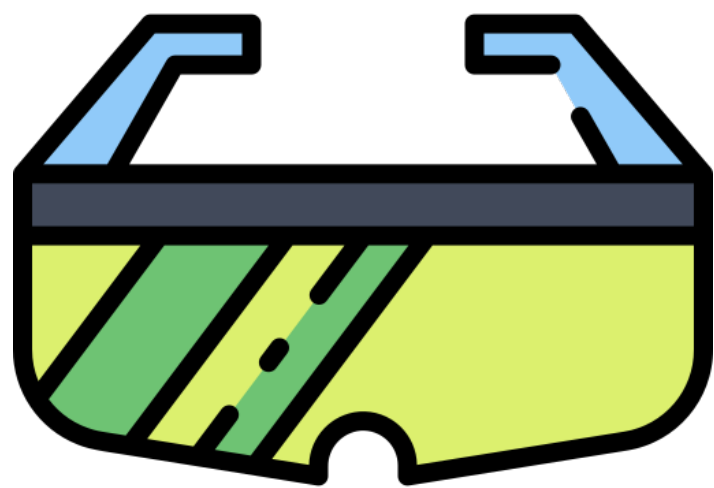
# Display Slips

The following slides are for classroom display. As you teach each Word of the Day, words can be displayed in the classroom to enable pupils to use the taught vocabulary in an independent manner.





spin



shade





# friendly



# split





heard

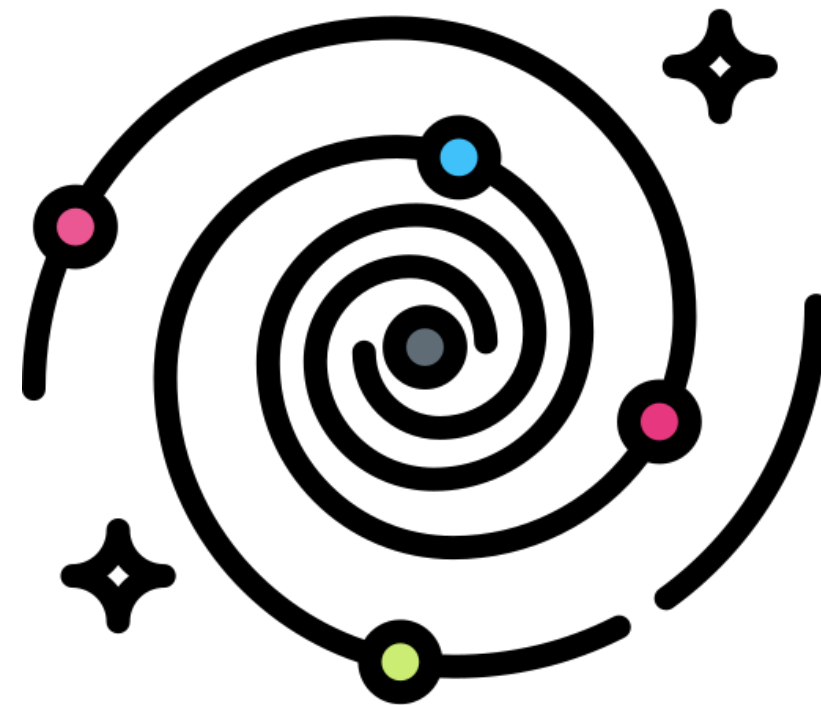


trek





# spiral



# swept







# guardian



# intruder

