

Word of the Day

Spring Term 2022

Week 19 – 31st January 2022



This Week's Words

Grasshopper

tear
office
spare
chipped
lift

Shinobi

tolerate
mutter
fixation

VN
VOCABULARY NINJA

VN Grasshopper Word of the Day

Word of the Day: heart
(heart)

Word Class: (noun)

Definition:
Your heart is the organ in your chest that pumps the blood around your body. People also use heart to refer to the area of their chest that is closest to their heart.

My heart was beating in my chest.

Rhyme: heart was beating
part
start

Link Word: blood
body

VN Shinobi Word of the Day

Word of the Day: calamitous
(ca-lam-i-tous)

Word Class: (adjective)

Definition:
If you describe an event or situation as calamitous, you mean it is very unfortunate or serious.

The calamitous twins destroyed the play room.

Phrases: the calamitous pair
completely calamitous

Synonym: disastrous
devastating

Antonym: good

Prefix / Suffix:

Rhyme: glamorous

Link Word: disaster
bad

'Words unlock the doors to a world of understanding...'

This Week's Words

Grasshopper

spy

partner

false

difficult

study

Shinobi

pester

underestimate

brutal

outrage

tedious



VOCABULARY NINJA

Grasshopper (Tier 1)

spy

partner

false

difficult

study



VOCABULARY NINJA

Shinobi (Tier 2)

pester

underestimate

brutal

outrage

tedious



VOCABULARY NINJA



Grasshopper Word of the Day

Word of the Day:

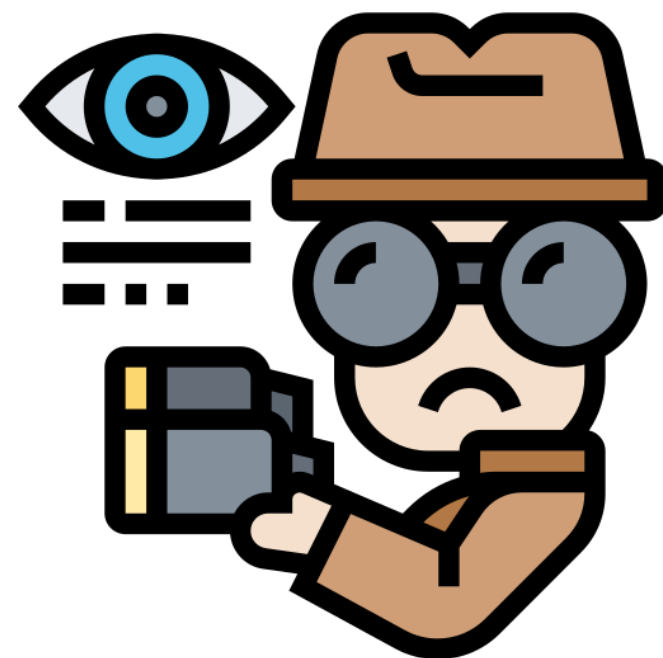
Pronunciation / Syllables

spy
(spy)

Word Class
(verb / noun)

Definition:

If you spy on someone, you watch them secretly.



Class 5 were **spying** on Class 4's new teacher.

Phrases:

sneakily spied on

always spying on

Synonym:

observe

watch

Antonym:

Rhyme:

high

why

Link Word:

on



Grasshopper Word of the Day

Word of the Day:

partner
(*part-ner*)

Word Class
(noun)

Pronunciation / Syllables

Definition:

Your partner is the person you are doing something with, for example dancing with or playing with in a game against two other people.



Miriam picked Alfie to be her **partner**.

Phrases:

a great partner for

partner up with

Synonym:

teammate

ally

Antonym:

Rhyme:

smarter

barter

Link Word:

with

together



Grasshopper Word of the Day

Word of the Day:

Pronunciation / Syllables

false
(false)

Word Class
(adjective)

Definition:

If something is false, it is incorrect, untrue, or mistaken.



Robbie knew the answer was false.

Phrases:

was false because

true or false

Synonym:

incorrect

untrue

Antonym:

correct

truthful

Rhyme:

Link Word:

answer

fact



Grasshopper Word of the Day

Word of the Day:

Pronunciation / Syllables

difficult
(dif-fi-cult)

Word Class
(adjective)

Definition:

Something that is difficult is not easy to do, understand, or deal with.



It was **difficult** to breathe after the running games in PE.

Phrases:

more difficult than

became difficult to

Synonym:

hard

tough

Antonym:

easy

simple

Rhyme:

Link Word:

task

situation



Grasshopper Word of the Day

Word of the Day:

Pronunciation / Syllables

study
(stud-y)

Word Class
(verb / noun)

Definition:

If you study something, you look at it or watch it very carefully, in order to find something out.



Harry **studied** the dinosaurs in his new books.

Phrases:

carefully studied

studied the

Synonym:

observe

learn

Antonym:

Rhyme:

buddy

muddy

Link Word:

carefully

in detail



Shinobi Word of the Day

Word of the Day:

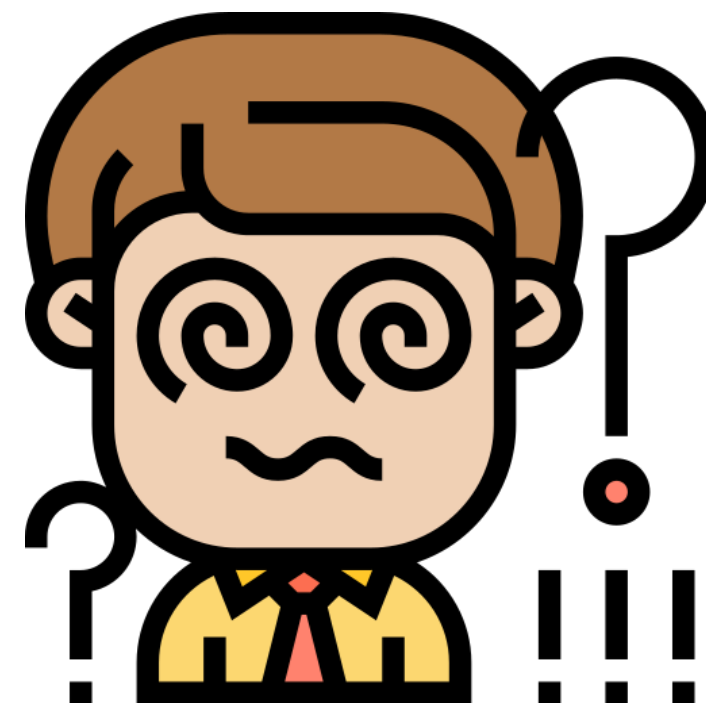
Pronunciation / Syllables

pester
(pes-ter)

Word Class
(verb)

Definition:

If you say that someone is pestering you, you mean that they keep asking you to do something, or keep talking to you, and you find this annoying.



Miss Khan was tired of being **pestered**!

Phrases:

continued to pester

was always pestering

Synonym:

badger

harass

Antonym:

Prefix / Suffix:

-ed

-ing

Rhyme:

investor

Link Word:

teacher

parent



Shinobi Word of the Day

Word Class
(verb)

Word of the Day: **underestimate**
(*un-der-es-ti-mate*)

Pronunciation / Syllables

Definition:

If you underestimate someone, you do not realise what they are capable of doing.



The wolf **underestimated** Little Red Riding Hood.

Phrases:

totally underestimated

underestimated her

Synonym:

miscalculate

Antonym:

overestimate

Prefix / Suffix:

-ing

-ed

Rhyme:

Link Word:

person

them



Shinobi Word of the Day

Word of the Day:

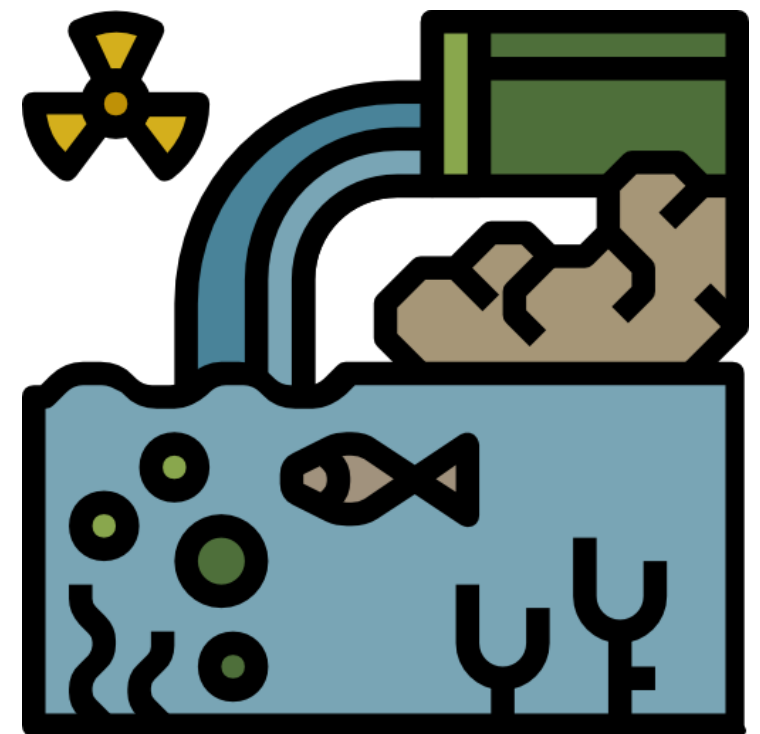
Pronunciation / Syllables

brutal
(bru-tal)

Word Class
(adjective)

Definition:

Brutal is used to describe things that have an extremely unpleasant effect on people.



Pollution has a **brutal** effect on the ocean.

Phrases:

brutal actions

brutal and dangerous

Synonym:

savage

barbaric

Antonym:

gentle

humane

Prefix / Suffix:

-ly

-ist

Rhyme:

futile

Link Word:

effect

actions



Shinobi Word of the Day

Word of the Day:

Pronunciation / Syllables

outrage
(out-rage)

Word Class
(verb)

Definition:

If you are outraged by something, it makes you extremely shocked and angry.



The children were **outraged** by lunchtime being shortened.

Phrases:

was outraged by

completely outrageous

Synonym:

fury

anger

Antonym:

Prefix / Suffix:

-eous

-ly

Rhyme:

Link Word:

life

decision



Shinobi Word of the Day

Word of the Day:

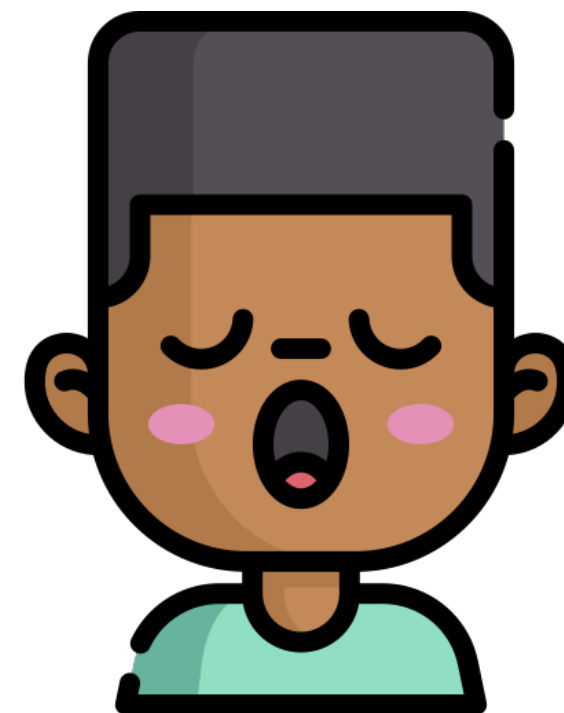
Pronunciation / Syllables

tedious
(te-di-ous)

Word Class
(adjective)

Definition:

If you describe something such as a job, task, or situation as tedious, you mean it is boring and rather frustrating.



Waiting in the line had become **tedious**.

Phrases:

was now very tedious

was tedious because

Synonym:

boring

dull

Antonym:

exciting

interesting

Prefix / Suffix

-ly

-ness

Rhyme:

Link Word:

situation

person

Vocabulary Laboratory



Describe / Definition:

Use it in a sentence:

Focus Word (write below):

Word Class:

Synonyms:

(words with same / similar meaning)

Antonyms:

(words with opposite meaning)

Draw your sentence:

Rhymes:

(words that sound the same)

Link Words:

(Example: football = pitch, team, player)

Vocabulary Visualiser

Draw the
Grasshopper words
and bring them to life.



Word: partner

Word: false

Word: difficult

Word: study



Vocabulary Visualiser

Draw the **Shinobi**
words and bring
them to life.



Word: pester

Word: brutal

Word: outrage

Word: tedious



Matching Meanings

Draw lines from the **Grasshopper** words to their definitions.



Grasshopper Word

spy

partner

false

difficult

study

Grasshopper Definitions

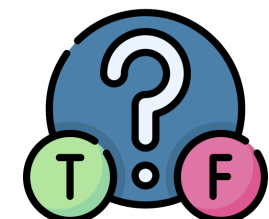
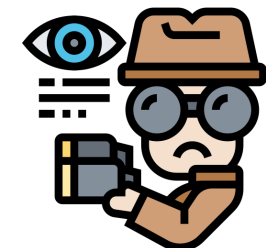
Your **** is the person you are doing something with, for example dancing with or playing with in a game against two other people.

Something that is *** is not easy to do, understand, or deal with.

If you *** on someone, you watch them secretly.

If you *** something, you look at it or watch it very carefully, in order to find something out.

If something is ***, it is incorrect, untrue, or mistaken.



Matching Meanings

Draw lines from the **Shinobi** words to their definitions.



Shinobi Word

Shinobi Definitions

pester

If you *** someone, you do not realise what they are capable of doing.



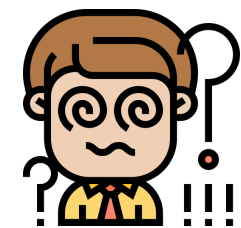
underestimate

If you are *** by something, it makes you extremely shocked and angry.



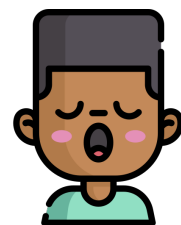
brutal

If you say that someone is *** you, you mean that they keep asking you to do something, or keep talking to you, and you find this annoying.



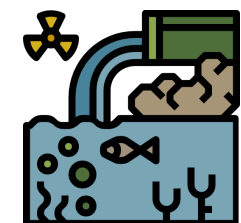
outrage

If you describe something such as a job, task, or situation as ***, you mean it is boring and rather frustrating.



tedious

*** is used to describe things that have an extremely unpleasant effect on people.





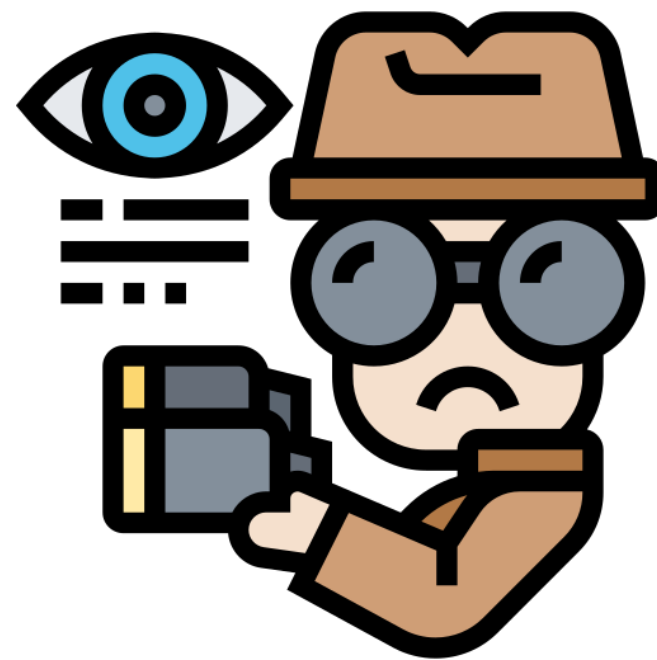
Display Slips

The following slides are for classroom display. As you teach each Word of the Day, words can be displayed in the classroom to enable pupils to use the taught vocabulary in an independent manner.





SPY



partner





false

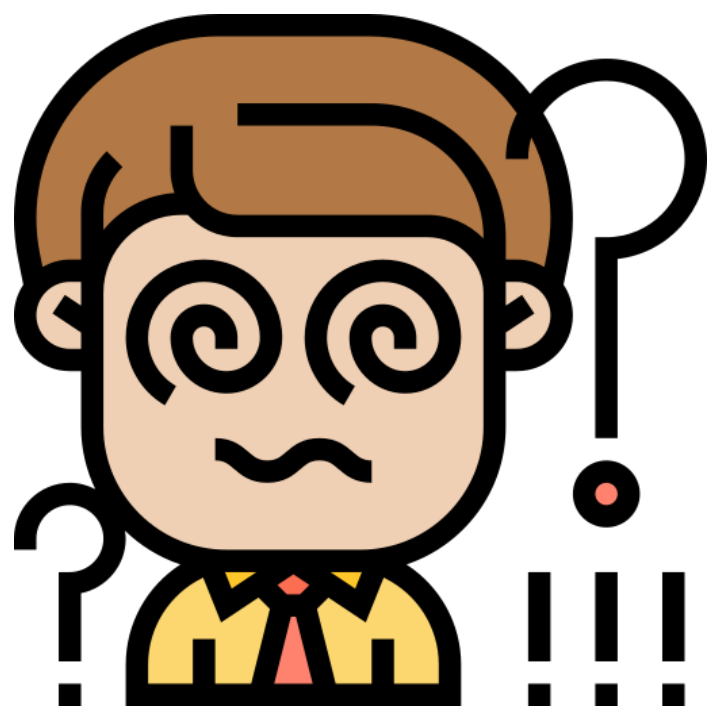


difficult





study

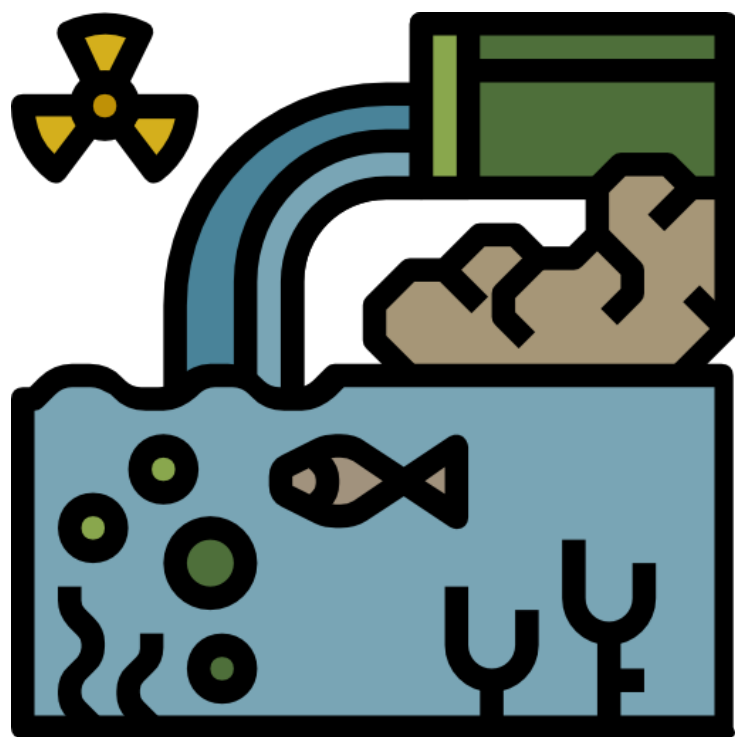


pester





underestimate

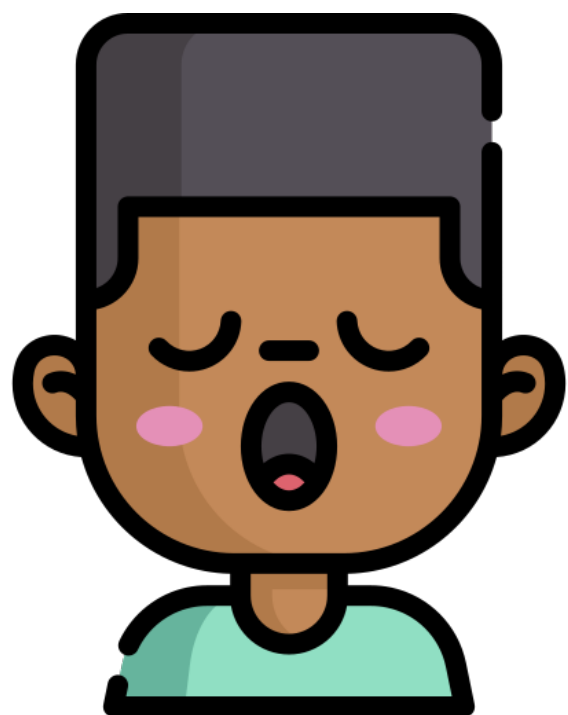


brutal





outrage



tedious

