

Word of the Day

Autumn Term 2021

Week 9 – 8th November 2021



This Week's Words

Grasshopper

tear
office
spare
chipped
lift

Shinobi

tolerate
mutter
fixation

VN
VOCABULARY NINJA

Grasshopper Word of the Day

Word of the Day: heart
(heart)

Word Class: (noun)

Definition:
Your heart is the organ in your chest that pumps the blood around your body. People also use heart to refer to the area of their chest that is closest to their heart.

My heart was beating in my chest.

Rhyme: heart was beating
part
start

Link Word: blood
body

Shinobi Word of the Day

Word of the Day: calamitous
(ca-lam-i-tous)

Word Class: (adjective)

Definition:
If you describe an event or situation as calamitous, you mean it is very unfortunate or serious.

The calamitous twins destroyed the play room.

Phrases: the calamitous pair
completely calamitous

Synonym: disastrous
devastating

Antonym: good

Prefix / Suffix:

Rhyme: glamorous

Link Word: disaster
bad

'Words unlock the doors to a world of understanding...'

This Week's Words

Grasshopper

fasten

lock

untie

expensive

perfect

Shinobi

design

ideal

forage

intricate

clench



VOCABULARY NINJA

Grasshopper (Tier 1)

fasten

lock

untie

expensive

perfect



VOCABULARY NINJA

Shinobi (Tier 2)

design

ideal

forage

intricate

clench



VOCABULARY NINJA



Grasshopper Word of the Day

Word of the Day:

Pronunciation / Syllables

fasten
(*fas-ten*)

Word Class
(verb)

Definition:

When you fasten something, you close it by means of buttons or a strap, or some other device. If something fastens with buttons or straps, you can close it in this way.



Danny needed to **fasten** his coat buttons before playing.

Phrases:

fasten tightly

quickly fasten

Synonym:

link

secure

Antonym:

unfasten

open

Rhyme:

Link Word:

clothing

belt



Grasshopper Word of the Day

Word of the Day:

Pronunciation / Syllables

lock
(lock)

Word Class
(verb / noun)

Definition:

When you lock something such as a door, drawer, or case, you fasten it, usually with a key, so that other people cannot open it.



The caretaker **locked** the windows on an evening.

Phrases:

lock up

close and lock

Synonym:

bolt

secure

Antonym:

unlock

release

Rhyme:

block

shock

Link Word:

door

crime



Grasshopper Word of the Day

Word of the Day:

Pronunciation / Syllables

untie
(*un-tie*)

Word Class
(verb)

Definition:

If you untie something that is tied to another thing or if you untie two things that are tied together, you remove the string or rope that holds them or that has been tied round them.



Ismail **untied** his shoe laces.

Phrases:

carefully untie

quickly untie

Synonym:

undo

unfasten

Antonym:

tie up

Rhyme:

why

try

Link Word:

shoes

laces



Grasshopper Word of the Day

Word of the Day: **expensive**

Word Class
(adjective)

Pronunciation / Syllables

(ex-pen-sive)

Definition:

If something is expensive, it costs a lot of money.



Olive said her new party shoes were very **expensive**.

Phrases:

very expensive

expensive and costly

Synonym:

costly
overpriced

Antonym:

cheap
economical

Rhyme:

extensive
offensive

Link Word:

clothes
food



Grasshopper Word of the Day

Word of the Day:

Pronunciation / Syllables

perfect
(*per-fect*)

Word Class
(adjective)

Definition:

Something that is perfect is as good as it could possibly be.



Corey drew the **perfect** circle.

Phrases:

completely perfect

unbelievably perfect

Synonym:

exact

precise

Antonym:

rough

imperfect

Rhyme:

effect

subject

Link Word:

idea

product



Shinobi Word of the Day

Word of the Day:

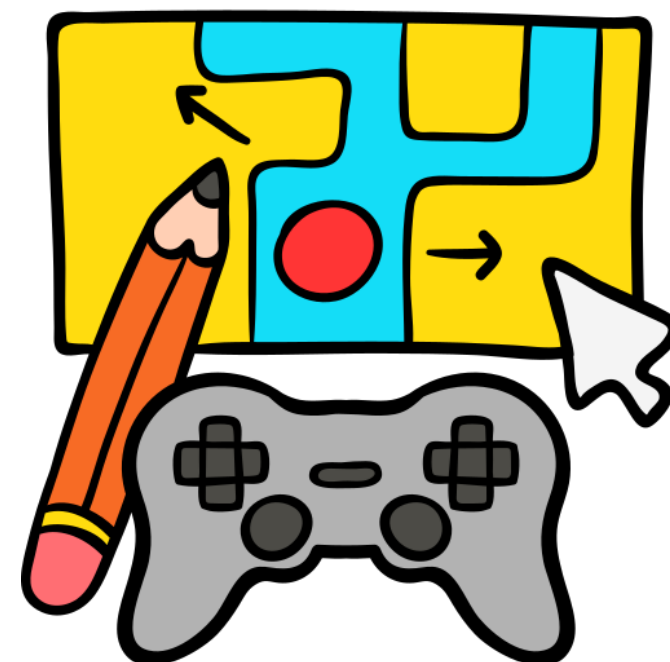
Pronunciation / Syllables

design
(de-sign)

Word Class
(noun / verb)

Definition:

When someone designs a garment, building, machine, or other object, they plan it and make a detailed drawing of it from which it can be built or made.



The children **designed** and coded a new game.

Phrases:

design in detail

step by step design

Synonym:

create
plan

Antonym:

Prefix / Suffix:

-er
re-

Rhyme:

fine
sign

Link Word:

games
sketch

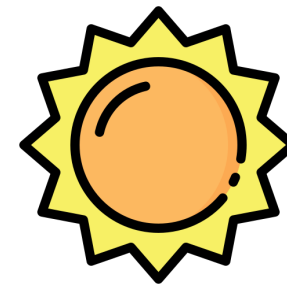


Shinobi Word of the Day

Word of the Day:

Pronunciation / Syllables

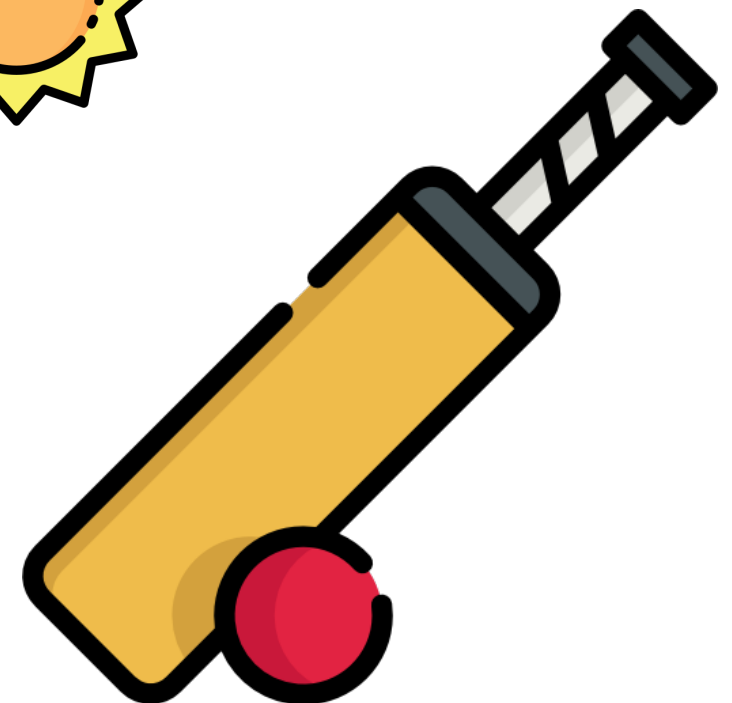
ideal
(i-de-al)



Word Class
(adjective)

Definition:

The ideal person or thing for a particular task or purpose is the best possible person or thing for it.



The weather was **ideal** for cricket.

Phrases:

ideal weather for

the ideal time for

Synonym:

perfect

Antonym:

bad

Prefix / Suffix:

-ly

non-

Rhyme:

real

meal

Link Word:

weather

conditions



Shinobi Word of the Day

Word of the Day:

Pronunciation / Syllables

forage
(for-age)

Word Class
(verb)

Definition:

If someone forages for something, they search for it in a busy way.



The squirrels **foraged** for nuts.

Phrases:

forage relentlessly

tirelessly forage for

Synonym:

hunt
search

Antonym:

Prefix / Suffix:

-ed
-ing

Rhyme:

storage

Link Word:

food
searching



Shinobi Word of the Day

Word of the Day:

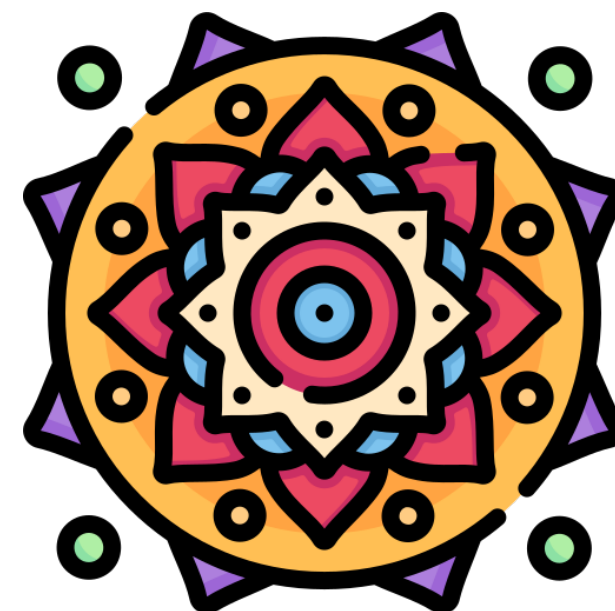
intricate
(in-tri-cate)

Word Class
(adjective)

Pronunciation / Syllables

Definition:

You use intricate to describe something that has many small parts or details.



The rangoli pattern was **intricate** and beautiful.

Phrases:

delicate and intricate

mesmerisingly intricate

Synonym:

complicated

elaborate

Antonym:

simple

straightforward

Prefix / Suffix:

dis-

Rhyme:

Link Word:

design

pattern



Shinobi Word of the Day

Word of the Day:

Pronunciation / Syllables

clench
(clench)

Word Class
(verb)

Definition:

If you clench something in your hand or in your teeth, you hold it tightly with your hand or your teeth.



Robert **clenched** his pound coin tightly.

Phrases:

clench tightly

clench lovingly

Synonym:

grip

grasp

Antonym:

Prefix / Suffix

-ed

un-

Rhyme:

bench

stench

Link Word:

teeth

fist

Vocabulary Laboratory



Describe / Definition:

Use it in a sentence:

Focus Word (write below):

Word Class:

Synonyms:

(words with same / similar meaning)

Antonyms:

(words with opposite meaning)

Draw your sentence:

Rhymes:

(words that sound the same)

Link Words:

(Example: football = pitch, team, player)

Vocabulary Visualiser

Draw the
Grasshopper words
and bring them to life.



Word: fasten

Word: lock

Word: untie

Word: expensive



Vocabulary Visualiser

Draw the **Shinobi**
words and bring
them to life.



Word: ideal

Word: design

Word: clench

Word: intricate



Matching Meanings

Draw lines from the **Grasshopper** words to their definitions.

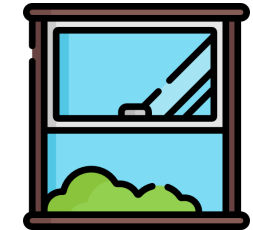


Grasshopper Word

Grasshopper Definitions

fasten

When you *** something such as a door, drawer, or case, you fasten it, usually with a key, so that other people cannot open it.



lock

If something is ***, it costs a lot of money.



untie

Something that is *** is as good as it could possibly be.



expensive

When you *** something, you close it by means of buttons or a strap, or some other device. If something *** with buttons or straps, you can close it in this way.



perfect

If you *** something that is tied to another thing or if you *** two things that are tied together, you remove the string or rope that holds them or that has been tied round them.



Matching Meanings

Draw lines from the **Shinobi** words to their definitions.

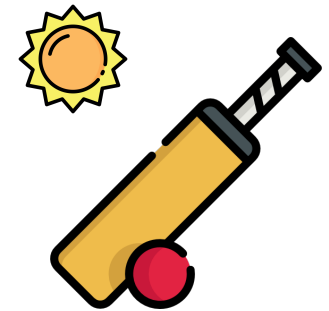


Shinobi Word

Shinobi Definitions

design

The *** person or thing for a particular task or purpose is the best possible person or thing for it.



ideal

If someone *** for something, they search for it in a busy way.



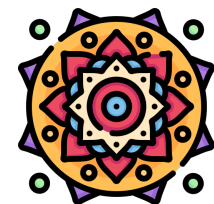
forage

When someone *** a garment, building, machine, or other object, they plan it and make a detailed drawing of it from which it can be built or made.



intricate

You use *** to describe something that has many small parts or details.



clench

If you *** something in your hand or in your teeth, you hold it tightly with your hand or your teeth.





Display Slips

The following slides are for classroom display. As you teach each Word of the Day, words can be displayed in the classroom to enable pupils to use the taught vocabulary in an independent manner.





fasten



lock





untie

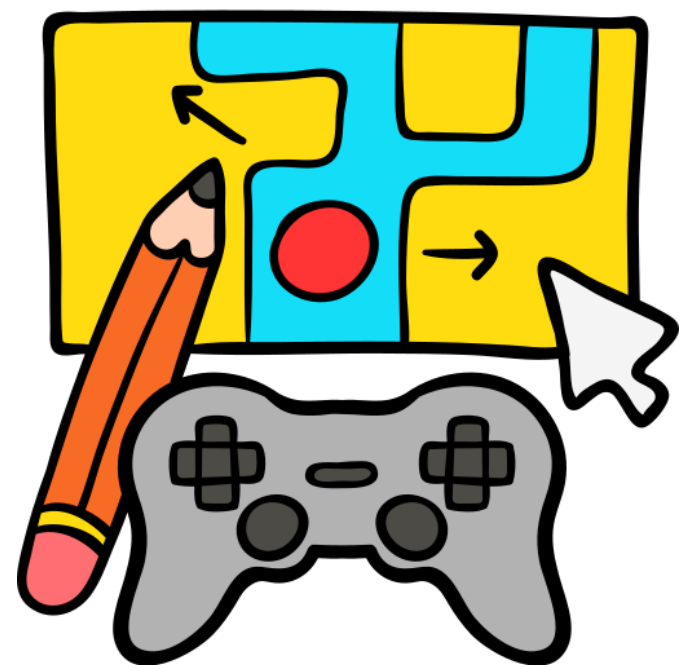


expensive





perfect

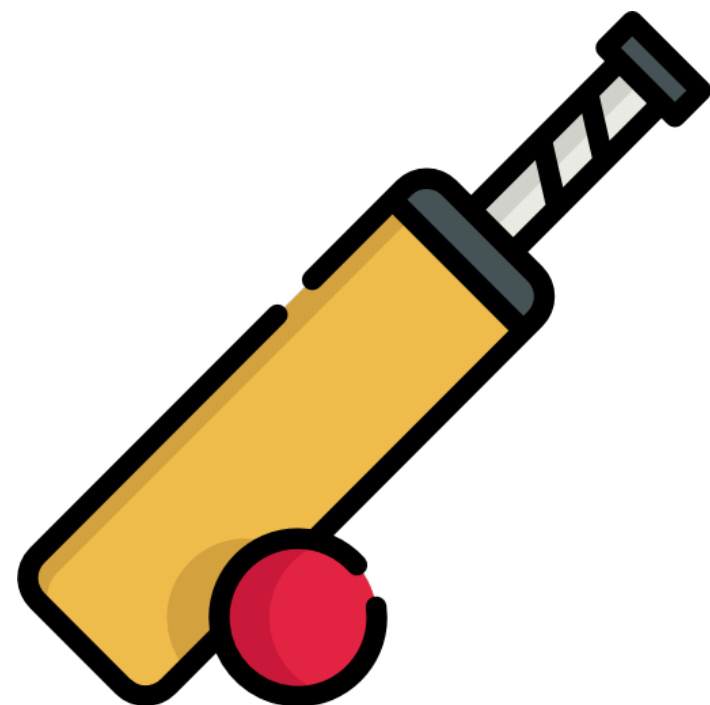
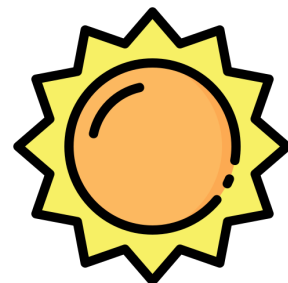


design





ideal

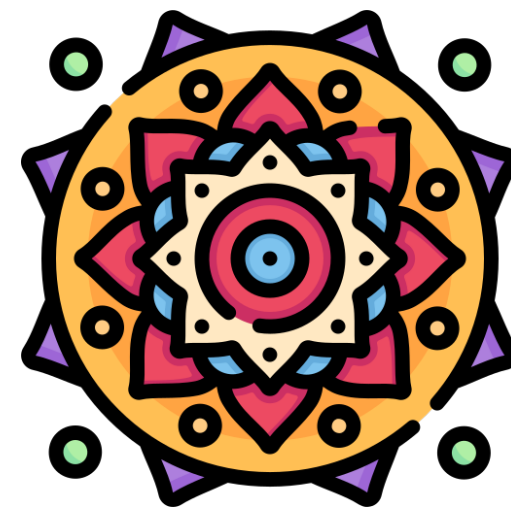


forage





intricate



clench

