

# Word of the Day

## Autumn Term 2021

Week 12 – 29th November 2021



### This Week's Words

**Grasshopper**

tear  
office  
spare  
chipped  
lift

**Shinobi**

tolerate  
mutter  
fixation

**VN**  
VOCABULARY NINJA

**Grasshopper Word of the Day**

**Word of the Day:** heart  
*(heart)*

**Word Class:** (noun)

**Definition:**  
Your heart is the organ in your chest that pumps the blood around your body. People also use heart to refer to the area of their chest that is closest to their heart.

**My heart was beating in my chest.**

**Rhyme:** heart was beating  
part  
start

**Link Word:** blood  
body

**Shinobi Word of the Day**

**Word of the Day:** calamitous  
*(ca-lam-i-tous)*

**Word Class:** (adjective)

**Definition:**  
If you describe an event or situation as calamitous, you mean it is very unfortunate or serious.

**The calamitous twins destroyed the play room.**

**Phrases:** the calamitous pair  
completely calamitous

**Synonym:** disastrous  
devastating

**Antonym:** good

**Prefix / Suffix:**

**Rhyme:** glamorous

**Link Word:** disaster  
bad

*'Words unlock the doors to a world of understanding...'*

# This Week's Words

## Grasshopper

**tough**

**rough**

**weigh**

**catch**

**train**

## Shinobi

**charisma**

**protect**

**stranded**

**useless**

**compare**



**VOCABULARY NINJA**

# Grasshopper (Tier 1)

**tough**

**rough**

**weigh**

**catch**

**train**



**VOCABULARY NINJA**

# Shinobi (Tier 2)

**charisma**

**protect**

**stranded**

**useless**

**compare**



**VOCABULARY NINJA**



# Grasshopper Word of the Day

Word of the Day:

Pronunciation / Syllables

tough  
(*tough*)

Word Class  
(adjective)

Definition:

A tough task or problem is difficult to do or solve.



Today's reading questions were very **tough**.

Phrases:

tough and difficult

tough to take

Synonym:

hard

difficult

Antonym:

easy

Rhyme:

enough

rough

Link Word:

activity

test



# Grasshopper Word of the Day

Word of the Day:

Pronunciation / Syllables

rough  
(rough)

Word Class  
(adjective)

Definition:

If a surface is rough, it is uneven and not smooth.



The animal's fur was very **rough**.

Phrases:

rough and uncomfortable

rough and ready

Synonym:

hoarse

harsh

Antonym:

soft

Rhyme:

stuff

bluff

Link Word:

material

feeling



# Grasshopper Word of the Day

Word of the Day:

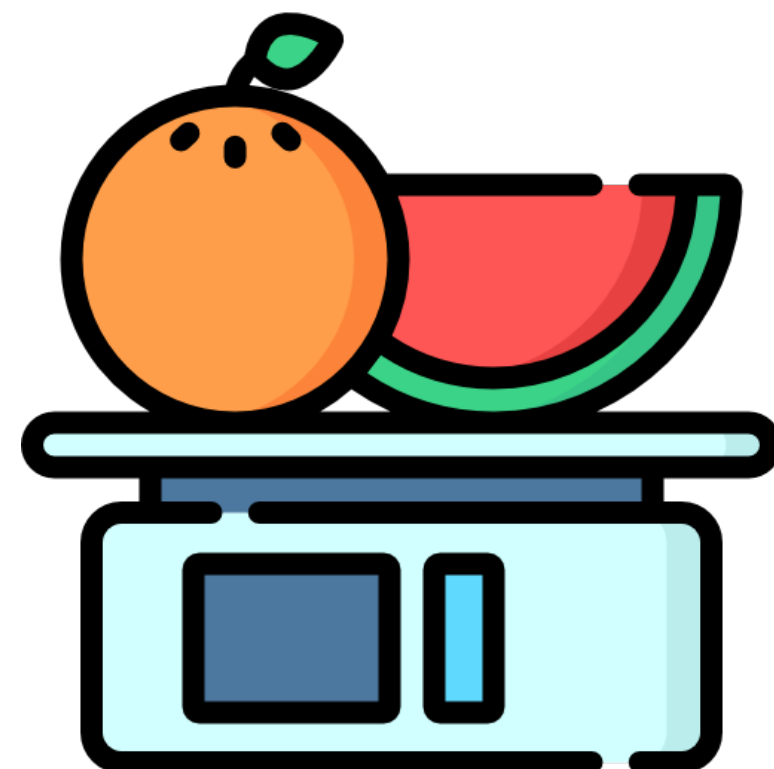
Pronunciation / Syllables

weigh  
(weigh)

Word Class  
(verb / noun)

Definition:

If someone or something weighs a particular amount, this amount is how heavy they are.



Bilal **weighed** the different ingredients on a scale.

Phrases:

weigh and measure

weight the ingredients

Synonym:

measure

Antonym:

Rhyme:

they  
away

Link Word:

food  
people



# Grasshopper Word of the Day

Word of the Day:

Pronunciation / Syllables

catch  
(catch)

Word Class  
(verb)

Definition:

If you catch a person or animal, you capture them after chasing them, or by using a trap, net, or other device.



Ralph was trying to **catch** Firma on the playground.

Phrases:

quickly catch

catch up

Synonym:

capture

seize

Antonym:

release

Rhyme:

match

patch

Link Word:

games

animal





# Grasshopper Word of the Day

Word of the Day:

Pronunciation / Syllables

train  
(*train*)

Word Class  
(verb)

## Definition:

If someone trains you to do something, they teach you the skills that you need in order to do it. If you train to do something, you learn the skills that you need in order to do it.



The girls were **training** for the football tournament.

Phrases:

trained hard

needed to train

Synonym:

exercise

upskill

Antonym:

Rhyme:

again

pain

Link Word:

sports

skill



# Shinobi Word of the Day

Word of the Day:

Pronunciation / Syllables

charisma  
(*cha-ris-ma*)

Word Class  
(noun / adjective)

Definition:

You say that someone has charisma when they can attract, influence, and inspire people by their personal qualities.



Darren was full of **charisma** and was a great nativity actor.

Phrases:

brilliant and charismatic

full of charisma

Synonym:

charm

personality

Antonym:

Prefix / Suffix:

-tic

Rhyme:

Link Word:

people

quality



# Shinobi Word of the Day

Word Class  
(verb)

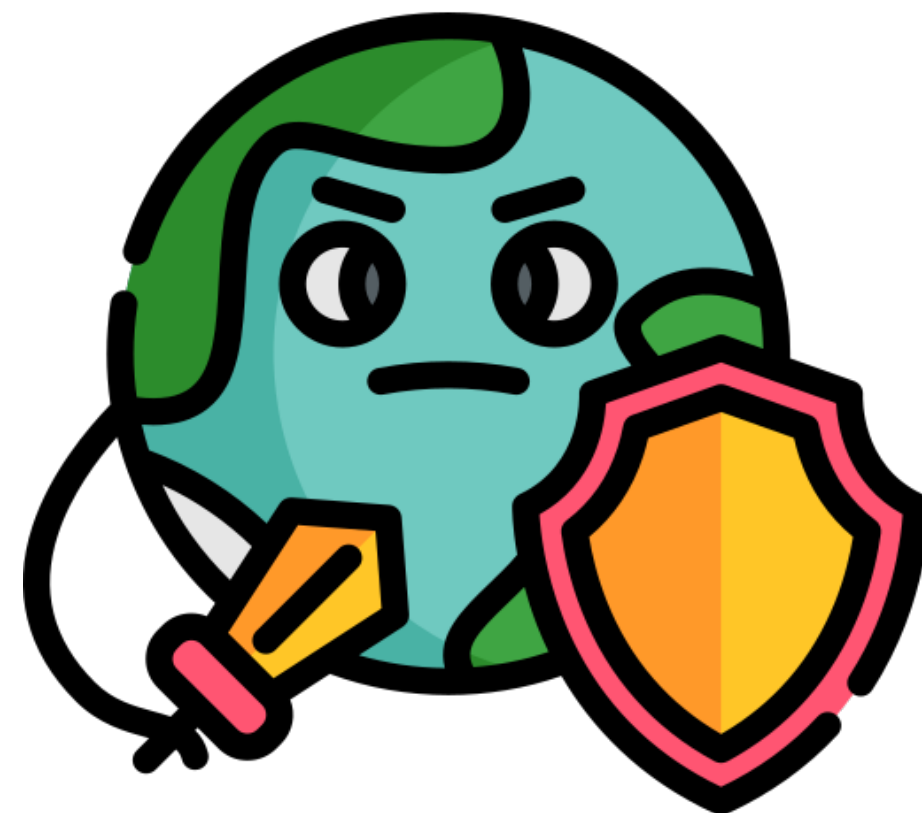
Word of the Day:

protect  
(*pro-protect*)

Pronunciation / Syllables

Definition:

To protect someone or something means to prevent them from being harmed or damaged.



They recycled to **protect** the planet.

Phrases:

protect completely

protect from danger

Synonym:

guard

defend

Antonym:

attack

harm

Prefix / Suffix:

-tion

-ed

Rhyme:

effect

direct

Link Word:

danger

evil



# Shinobi Word of the Day

Word of the Day:

**stranded**  
(*strand-ed*)

Word Class  
(adjective)

Pronunciation / Syllables

## Definition:

Being stranded means to be left without the means to move from somewhere.



Ruby was **stranded** on the island.

Phrases:

stranded and alone

completely stranded

Synonym:

stuck

helpless

Antonym:

Prefix / Suffix:

Rhyme:

handed

expanded

Link Word:

island

alone



# Shinobi Word of the Day

Word of the Day:

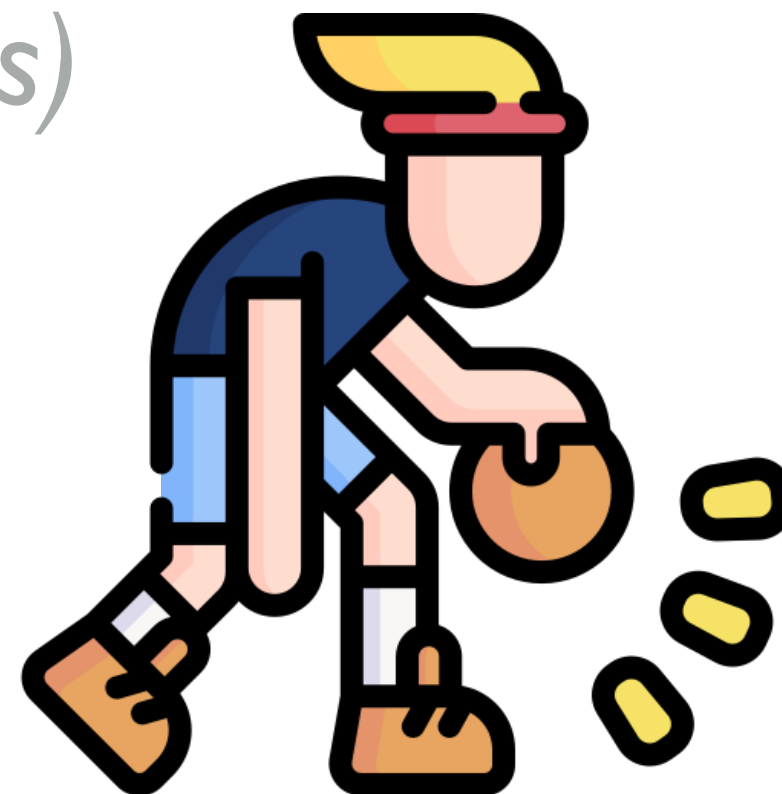
Pronunciation / Syllables

useless  
(*use-less*)

Word Class  
(adjective)

## Definition:

If something is useless, you cannot use it.  
If someone feels useless, they feel bad because they are unable to help someone or achieve anything.



Dan felt like he was **useless** at basketball.

Phrases:

totally useless

felt useless when

Synonym:

worthless

inept

Antonym:

effective

competent

Prefix / Suffix:

-ness

-ly

Rhyme:

juiceless

Link Word:

sports

maths



# Shinobi Word of the Day

Word of the Day:

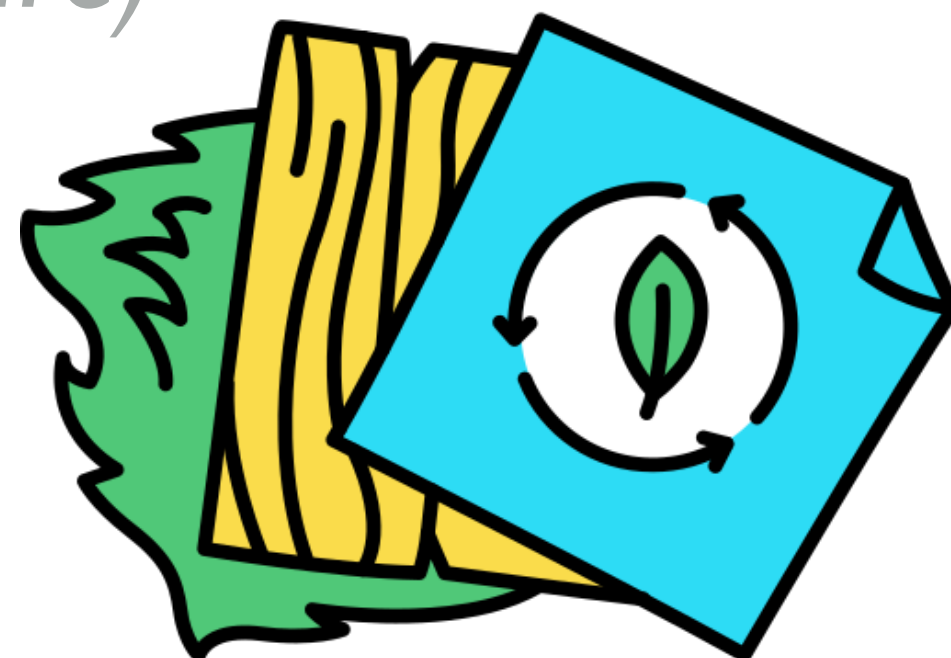
**compare**  
(com-*pare*)

Word Class  
(verb)

Pronunciation / Syllables

## Definition:

When you compare things, you consider them and discover the differences or similarities between them.



The children **compared** materials in science.

Phrases:

compare closely

compare every detail

Synonym:

contrast

liken

Antonym:

Prefix / Suffix

-ing

-ed

Rhyme:

share

square

Link Word:

clothes

people

# Vocabulary Laboratory



Describe / Definition:

Use it in a sentence:

Focus Word (write below):

Word Class:

**Synonyms:**

(words with same / similar meaning)

**Antonyms:**

(words with opposite meaning)

**Draw your sentence:**

**Rhymes:**

(words that sound the same)

**Link Words:**

(Example: football = pitch, team, player)

# Vocabulary Visualiser

Draw the  
**Grasshopper** words  
and bring them to life.



Word: rough

Word: tough

Word: weigh

Word: catch





# Vocabulary Visualiser

Draw the **Shinobi**  
words and bring  
them to life.



Word: protest

Word: stranded

Word: useless

Word: compare



# Matching Meanings

Draw lines from the **Grasshopper** words to their definitions.

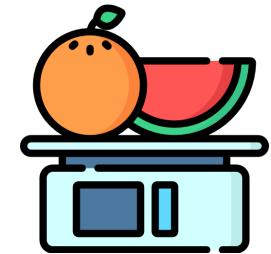


## Grasshopper Word

## Grasshopper Definitions

tough

If someone or something \*\*\* a particular amount, this amount is how heavy they are.



rough

If you \*\*\* a person or animal, you capture them after chasing them, or by using a trap, net, or other device.



weigh

If a surface is \*\*\*, it is uneven and not smooth.



catch

A \*\*\* task or problem is difficult to do or solve.



train

If someone \*\*\* you to do something, they teach you the skills that you need in order to do it. If you \*\*\* to do something, you learn the skills that you need in order to do it.



# Matching Meanings

Draw lines from the **Shinobi** words to their definitions.



## Shinobi Word

## Shinobi Definitions

charisma

Being \*\*\* means to be left without the means to move from somewhere.



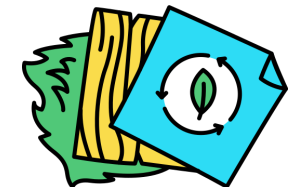
protect

To \*\*\* someone or something means to prevent them from being harmed or damaged.



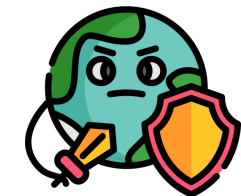
stranded

When you \*\*\* things, you consider them and discover the differences or similarities between them.



useless

If you \*\*\* something, you take hold of it quickly, firmly, and forcefully.



compare

If something is \*\*\*, you cannot use it. If someone feels \*\*\*, they feel bad because they are unable to help someone or achieve anything.





# Display Slips

The following slides are for classroom display. As you teach each Word of the Day, words can be displayed in the classroom to enable pupils to use the taught vocabulary in an independent manner.





# tough

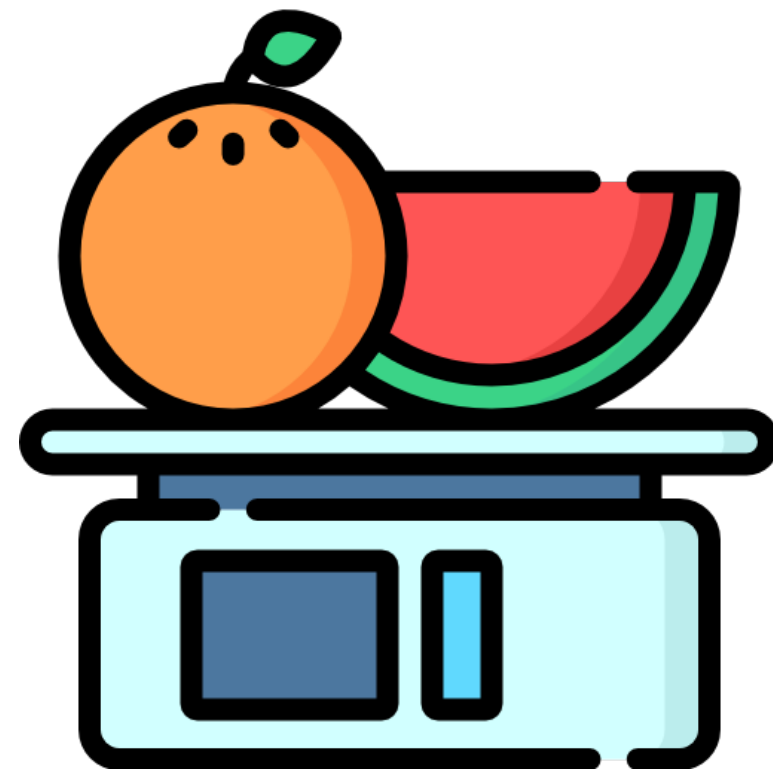


# rough





weigh



catch





# train

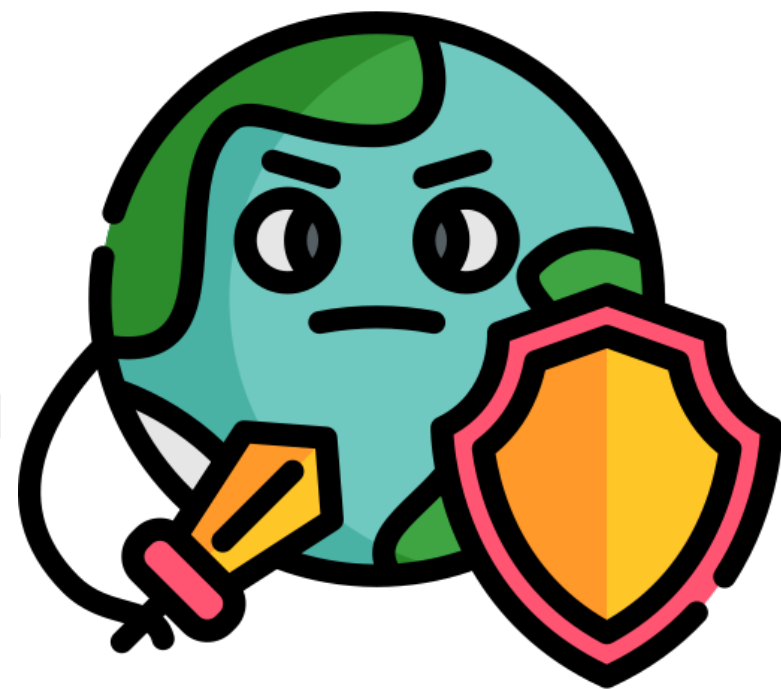


# charisma





# protect



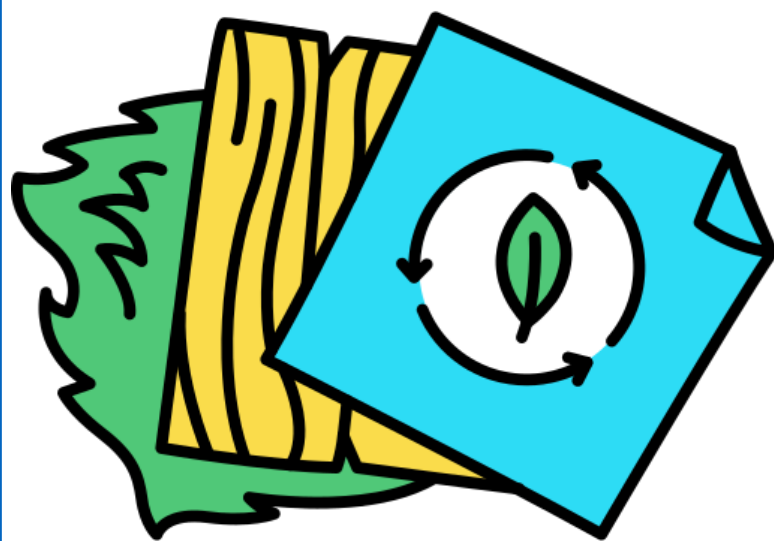
# stranded







# useless



# compare

