

# Word of the Day

## Autumn Term 2021

Week 6 – 11th October 2021



### This Week's Words

**Grasshopper**

tear  
office  
spare  
chipped  
lift

**Shinobi**

tolerate  
mutter  
fixation

**VN**  
VOCABULARY NINJA

**Grasshopper Word of the Day**

**Word of the Day:** heart  
*Pronunciation / Syllables* (heart)

**Word Class** (noun)

**Definition:**  
Your heart is the organ in your chest that pumps the blood around your body. People also use heart to refer to the area of their chest that is closest to their heart.

**My heart was beating in my chest.**

**Rhyme:** heart was beating  
part  
start

**Link Word:** blood  
body

**Shinobi Word of the Day**

**Word of the Day:** calamitous  
*Pronunciation / Syllables* (ca-lam-i-tous)

**Word Class** (adjective)

**Definition:**  
If you describe an event or situation as calamitous, you mean it is very unfortunate or serious.

**The calamitous twins destroyed the play room.**

**Phrases:** the calamitous pair  
completely calamitous

**Synonym:** disastrous  
devastating

**Antonym:** good

**Prefix / Suffix:**

**Rhyme:** glamorous

**Link Word:** disaster  
bad

*'Words unlock the doors to a world of understanding...'*

# This Week's Words

**Grasshopper**

**slope**

**deep**

**palace**

**whisker**

**lucky**

**Shinobi**

**fertile**

**swarm**

**plummet**

**colossal**

**dumbstruck**



**VOCABULARY NINJA**

# Grasshopper (Tier 1)

slope

deep

palace

whisker

lucky



**VOCABULARY NINJA**

# **Shinobi (Tier 2)**

**fertile**

**swarm**

**plummet**

**colossal**

**dumbstruck**



**VOCABULARY NINJA**



# Grasshopper Word of the Day

Word of the Day:

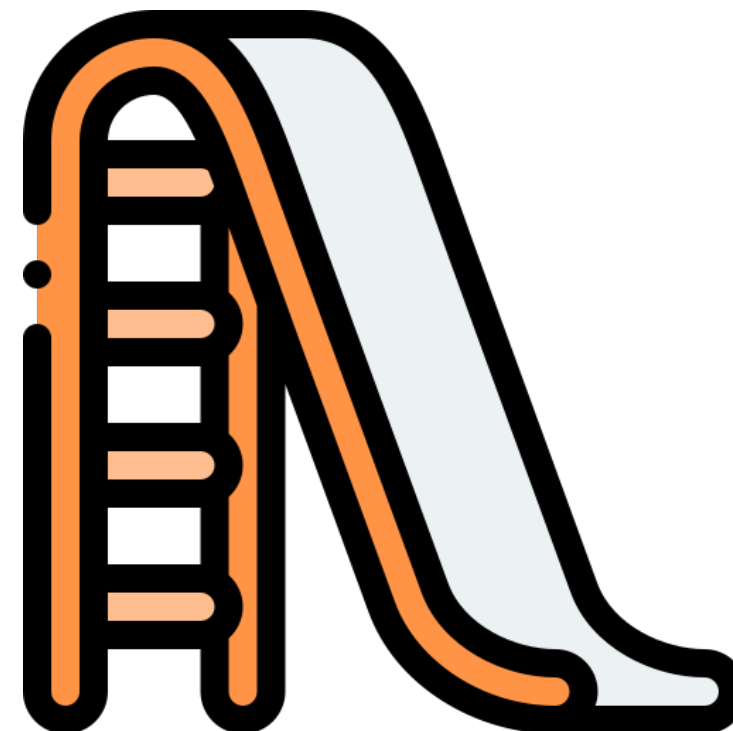
Pronunciation / Syllables

slope  
(slope)

Word Class  
(verb / noun)

Definition:

If a surface slopes, it is at an angle, so that one end is higher than the other.



The slide on the playground was one big slope.

Phrases:

huge slope

slight slope

Synonym:

slant

tilt

Antonym:

level

Rhyme:

hope

rope

Link Word:

slip

climb



# Grasshopper Word of the Day

Word of the Day:

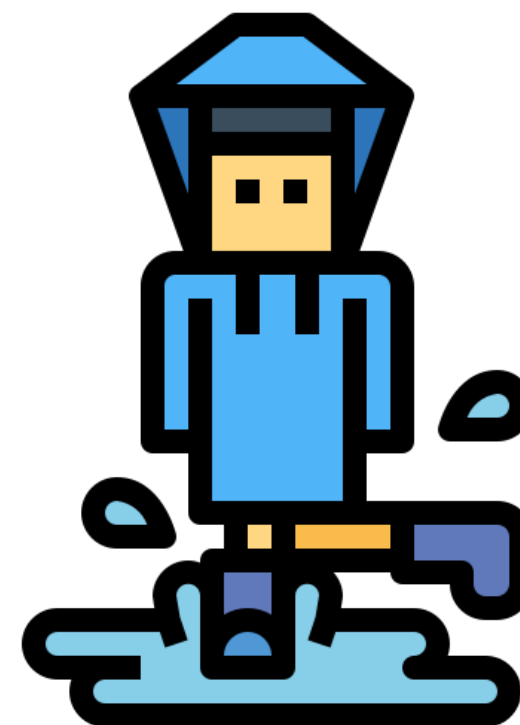
Pronunciation / Syllables

deep  
(deep)

Word Class  
(adjective)

Definition:

If something is deep, it extends a long way down from the ground or from the top surface of something.



Asha jumped in the deep puddle.

Phrases:

deep and dark

deeper than expected

Synonym:

Antonym:

Rhyme:

Link Word:

shallow

peep

water

creep

feelings



# Grasshopper Word of the Day

Word of the Day:

Pronunciation / Syllables

palace  
(pal-ace)

Word Class  
(noun)

Definition:

You can refer to any large splendid house or other building as a palace.



The classroom was as tidy as a **palace**.

Phrases:

large palace

crumbling palace

Synonym:

Antonym:

Rhyme:

Link Word:

ball

royal



# Grasshopper Word of the Day

Word of the Day:

**whisker**  
(*whisk-er*)

Word Class  
(noun)

Pronunciation / Syllables

**Definition:**

The whiskers of an animal such as a cat or a mouse are the long stiff hairs that grow near its mouth.



The cat's **whiskers** were covered in milk.

Phrases:

lengthy whiskers

elegant whiskers

Synonym:

Antonym:

Rhyme:

Link Word:

brisker

cat

dog





# Grasshopper Word of the Day

Word of the Day:

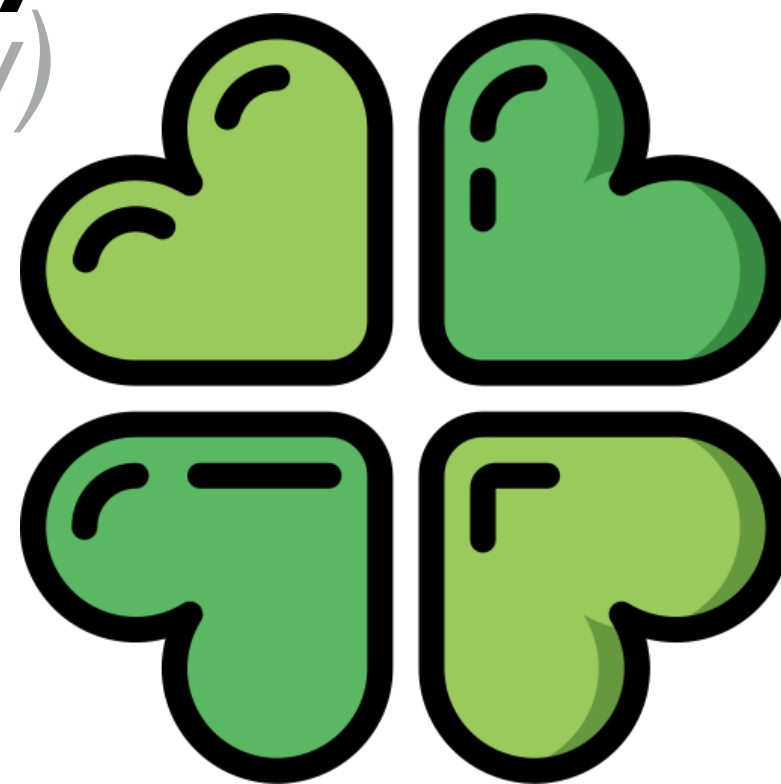
Pronunciation / Syllables

lucky  
(*luck-y*)

Word Class  
(adjective)

Definition:

You say that someone is lucky when they have something that is very desirable or when they are in a very desirable situation.



Today was going to be Freddie's **lucky** day.

Phrases:

extremely lucky

quite lucky

Synonym:

charmed

jammy

Antonym:

unlucky

unfortunate

Rhyme:

plucky

yucky

Link Word:

charm

number



# Shinobi Word of the Day

Word of the Day:

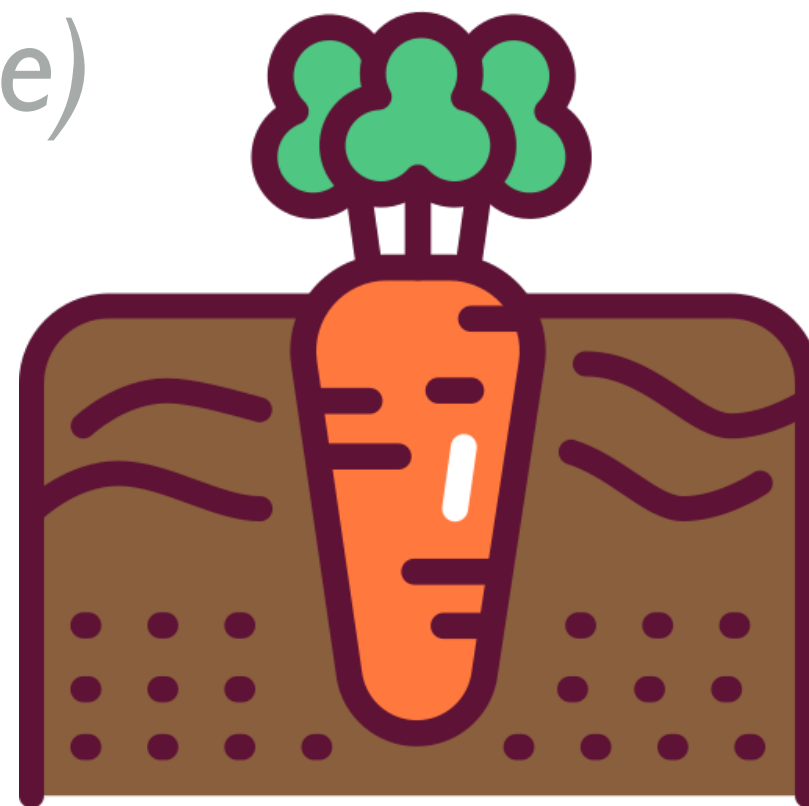
Pronunciation / Syllables

fertile  
(fer-tile)

Word Class  
(adjective)

Definition:

Land or soil that is fertile is able to support the growth of a large number of strong healthy plants.



The **fertile** soil was great for growing vegetables.

Phrases:

always fertile

very fertile

Synonym:

fruitful

lush

Antonym:

infertile

Prefix / Suffix:

in-

-ise

Rhyme:

turtle

hurtle

Link Word:

land

soil



# Shinobi Word of the Day

Word of the Day:

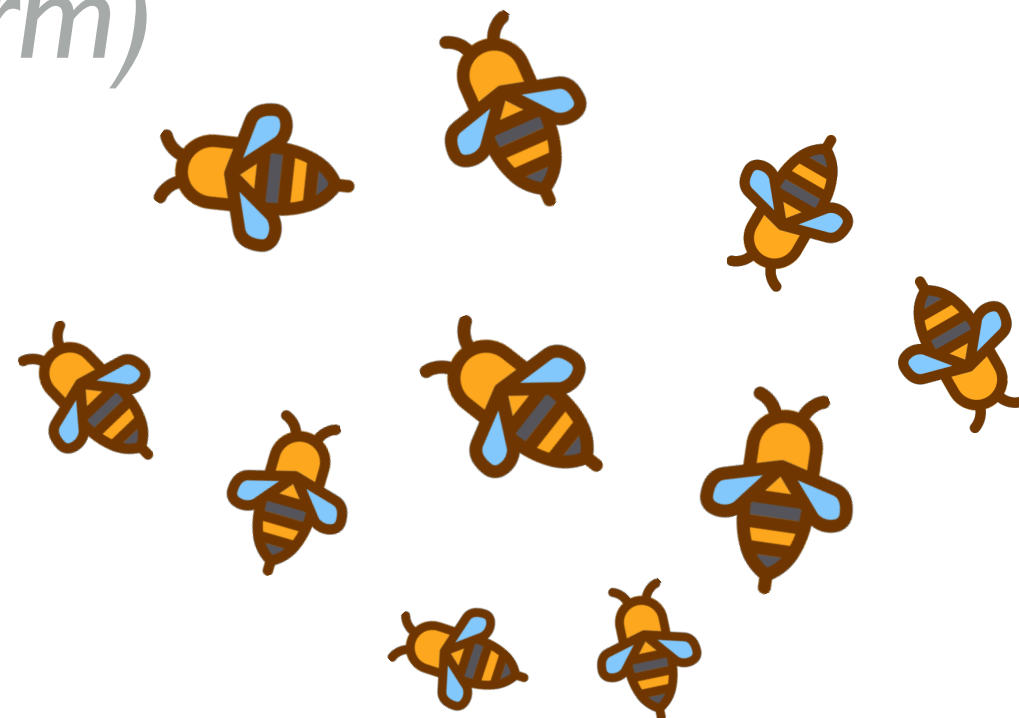
**swarm**  
(*swarm*)

Word Class  
(verb / noun)

Pronunciation / Syllables

Definition:

When people swarm somewhere, they move there quickly in a large group.



The children **swarmed** into the classroom.

Phrases:

swarmed quickly

randomly swarmed

Synonym:

crowd

horde

Antonym:

Prefix / Suffix:

-ing

-ed

Rhyme:

warn

storm

Link Word:

bees

insects



# Shinobi Word of the Day

Word of the Day:

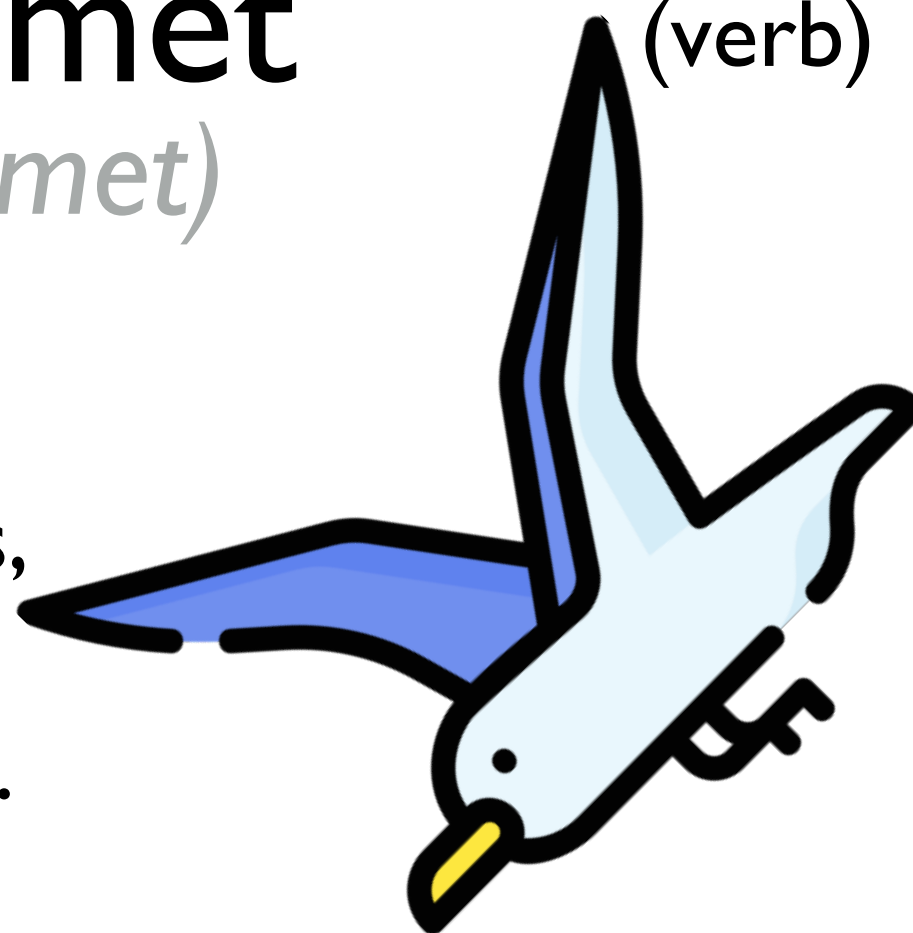
Pronunciation / Syllables

plummet  
(*plum-met*)

Word Class  
(verb)

## Definition:

If someone or something plummets, they fall very fast towards the ground, usually from a great height.



The seagulls **plummeted** from the sky, hunting for chips.

Phrases:

swiftly plummeted

plummeted with venom

Synonym:

plunge

hurtle

Antonym:

Prefix / Suffix:

-ed

-ing

Rhyme:

Link Word:

sky

space



# Shinobi Word of the Day

Word of the Day:

Pronunciation / Syllables

colossal  
(co-los-sal)

Word Class  
(adjective)

Definition:

If you describe something as colossal, you are emphasising that it is very large.



The book was **colossal**, but we loved every page.

Phrases:

vast and colossal

colossal heart

Synonym:

monstrous  
elephantine

Antonym:

tiny

Prefix / Suffix:

-ly

Rhyme:

fossil  
jostle

Link Word:

personality  
person



# Shinobi Word of the Day

Word of the Day: **dumbstruck** Word Class  
(adjective)

Pronunciation / Syllables

(*dumb-struk*)

## Definition:

If you are dumbstruck, you are so shocked or surprised that you cannot speak.



The teacher was **dumbstruck** by how well they could sing.

Phrases:

dumbstruck and shocked

dumbstruck with fear

Synonym:

Antonym:

Prefix / Suffix

Rhyme:

Link Word:

shock

horror

# Vocabulary Laboratory



Describe / Definition:

Use it in a sentence:

**Focus Word** (write below):

**Word Class:**

**Synonyms:**

(words with same / similar meaning)

**Antonyms:**

(words with opposite meaning)

**Draw your sentence:**

**Rhymes:**

(words that sound the same)

**Link Words:**

(Example: football = pitch, team, player)

# Vocabulary Visualiser

Draw the  
**Grasshopper** words  
and bring them to life.



Word: slope

Word: deep

Word: whisker

Word: lucky





# Vocabulary Visualiser

Draw the **Shinobi**  
words and bring  
them to life.



Word: swarm

Word: plummet

Word: colossal

Word: fertile



# Matching Meanings

Draw lines from the **Grasshopper** words to their definitions.



## Grasshopper Word

## Grasshopper Definitions

slope

If something is \*\*\*, it extends a long way down from the ground or from the top surface of something.



deep

The \*\*\* of an animal such as a cat or a mouse are the long stiff hairs that grow near its mouth.



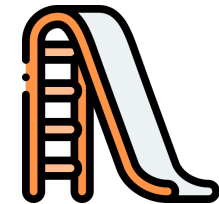
palace

You say that someone is \*\*\* when they have something that is very desirable or when they are in a very desirable situation.



whisker

If a surface \*\*\*, it is at an angle, so that one end is higher than the other.



lucky

You can refer to any large splendid house or other building as a \*\*\*.



# Matching Meanings

Draw lines from the **Shinobi** words to their definitions.



## Shinobi Word

## Shinobi Definitions

fertile

When people \*\*\* somewhere, they move there quickly in a large group.



swarm

If you are \*\*\*, you are so shocked or surprised that you cannot speak.



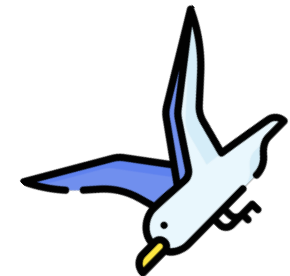
plummet

Land or \*\*\* that is fertile is able to support the growth of a large number of strong healthy plants.



colossal

If someone or something \*\*\*, they fall very fast towards the ground, usually from a great height.



dumbstruck

If you describe something as \*\*\*, you are emphasising that it is very large.





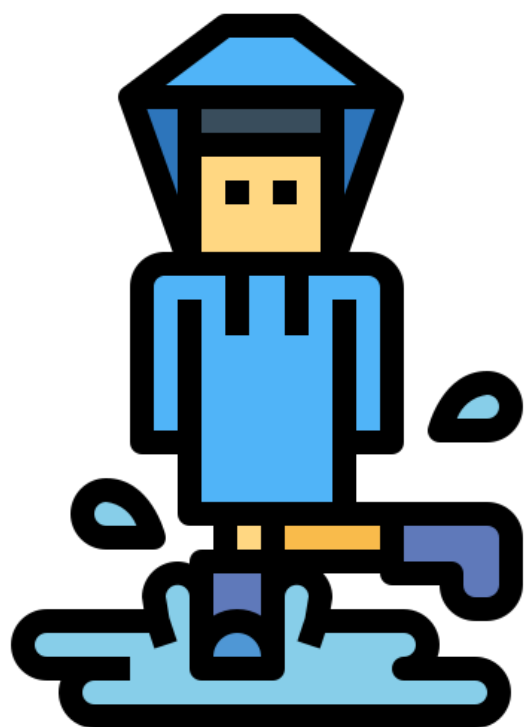
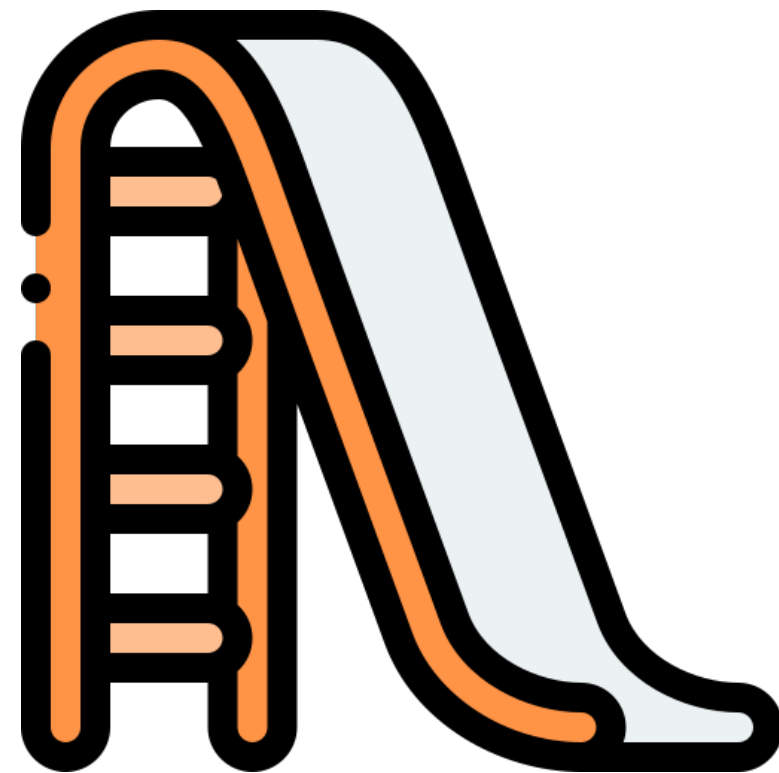
# Display Slips

The following slides are for classroom display. As you teach each Word of the Day, words can be displayed in the classroom to enable pupils to use the taught vocabulary in an independent manner.





slope



deep





palace

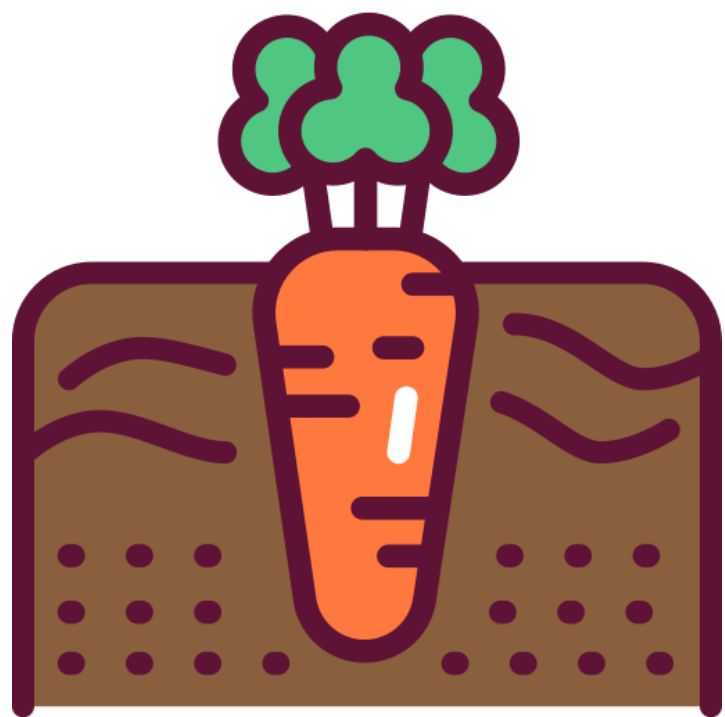


whisker





lucky

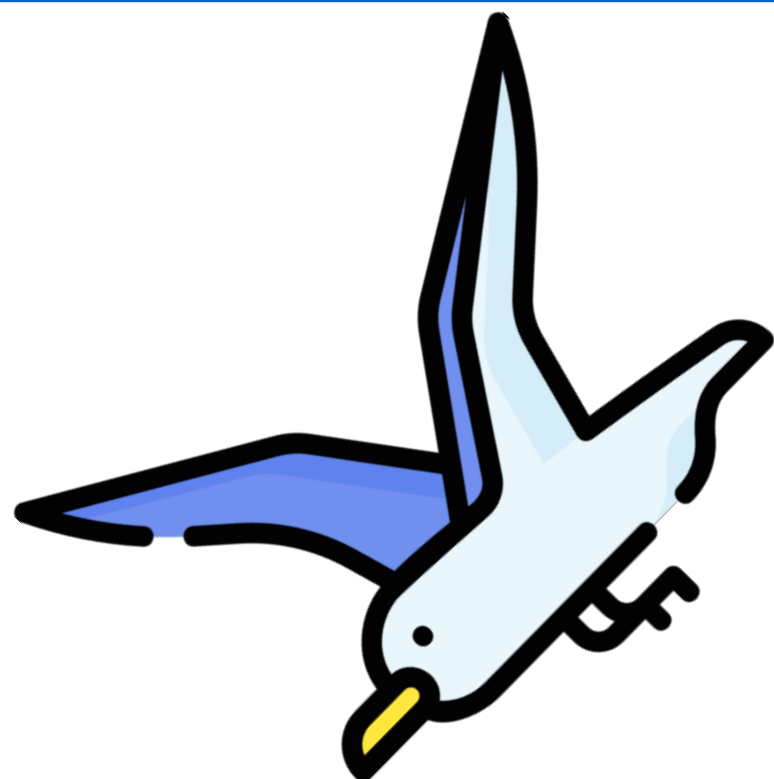
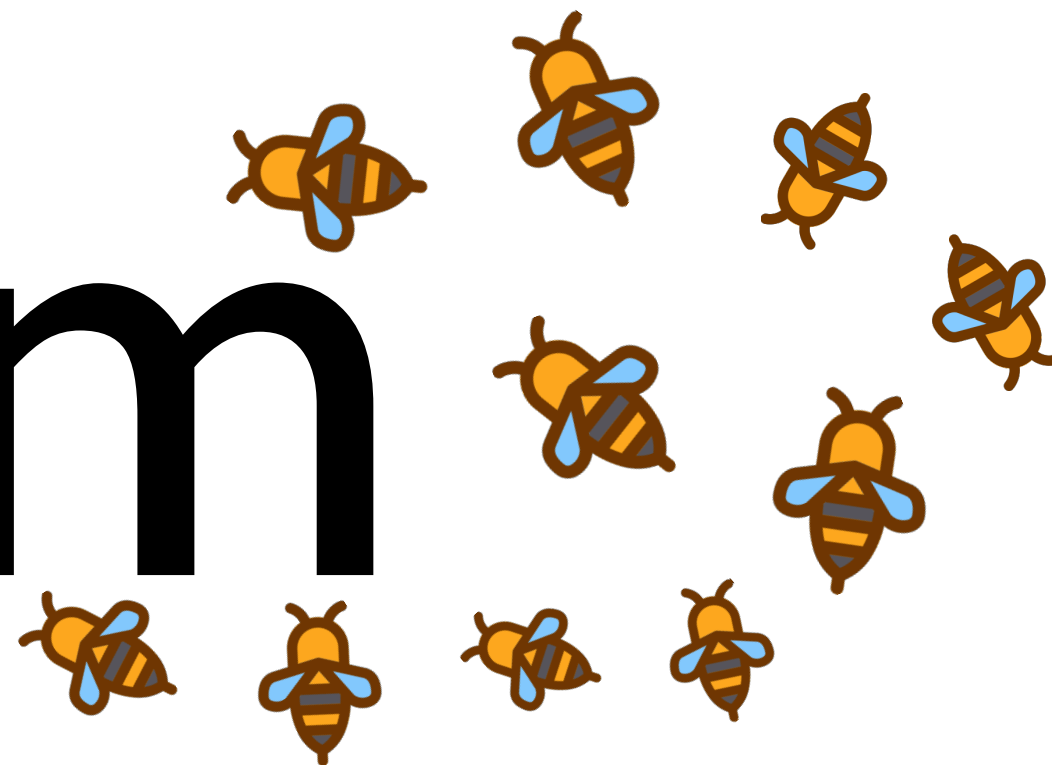


fertile





# swarm



# plummet







colossal



dumbstruck

