

Word of the Day

Autumn Term 2021

Week 7 – 18th October 2021



This Week's Words

Grasshopper

tear
office
spare
chipped
lift

Shinobi

tolerate
mutter
fixation

VN
VOCABULARY NINJA

Grasshopper Word of the Day

Word of the Day: heart
Pronunciation / Syllables (heart)

Word Class (noun)

Definition:
Your heart is the organ in your chest that pumps the blood around your body. People also use heart to refer to the area of their chest that is closest to their heart.

My heart was beating in my chest.

Rhyme: heart was beating
part
start

Link Word: blood
body

Shinobi Word of the Day

Word of the Day: calamitous
Pronunciation / Syllables (ca-lam-i-tous)

Word Class (adjective)

Definition:
If you describe an event or situation as calamitous, you mean it is very unfortunate or serious.

The calamitous twins destroyed the play room.

Phrases: the calamitous pair
completely calamitous

Synonym: disastrous
devastating

Antonym: good

Prefix / Suffix:

Rhyme: glamorous

Link Word: disaster
bad

'Words unlock the doors to a world of understanding...'

This Week's Words

Grasshopper

shrink

kneel

flutter

costume

plan

Shinobi

animosity

imply

jeopardise

succumb

wince



VOCABULARY NINJA

Grasshopper (Tier 1)

shrink

kneel

flutter

costume

plan



VOCABULARY NINJA

Shinobi (Tier 2)

animosity

imply

jeopardise

succumb

wince



VOCABULARY NINJA



Grasshopper Word of the Day

Word of the Day:

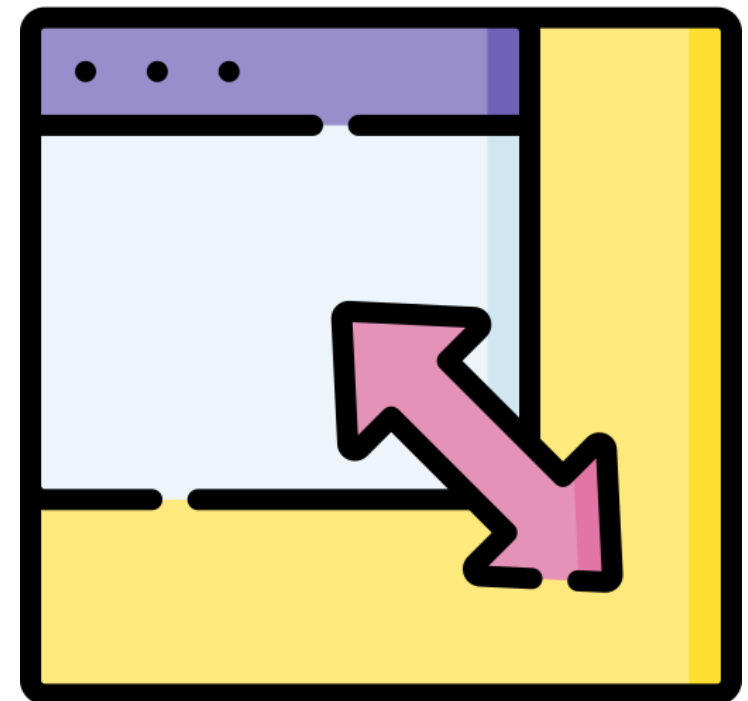
Pronunciation / Syllables

shrink
(shrink)

Word Class
(verb)

Definition:

If something shrinks or something else shrinks it, it becomes smaller.



Andrew **shrank** the image on the computer.

Phrases:

shrink and reduce

shrink down

Synonym:

reduce

Antonym:

expand

Rhyme:

think

ink

Link Word:

clothes

person



Grasshopper Word of the Day

Word of the Day:

Pronunciation / Syllables

kneel
(kneel)

Word Class
(verb)

Definition:

When you kneel, you bend your legs so that your knees are touching the ground.



The knight **knelt** before the queen

Phrases:

kneel and bow

take the knee

Synonym:

bow

curtsy

Antonym:

Rhyme:

feel

peel

Link Word:

royal

pray



Grasshopper Word of the Day

Word of the Day:

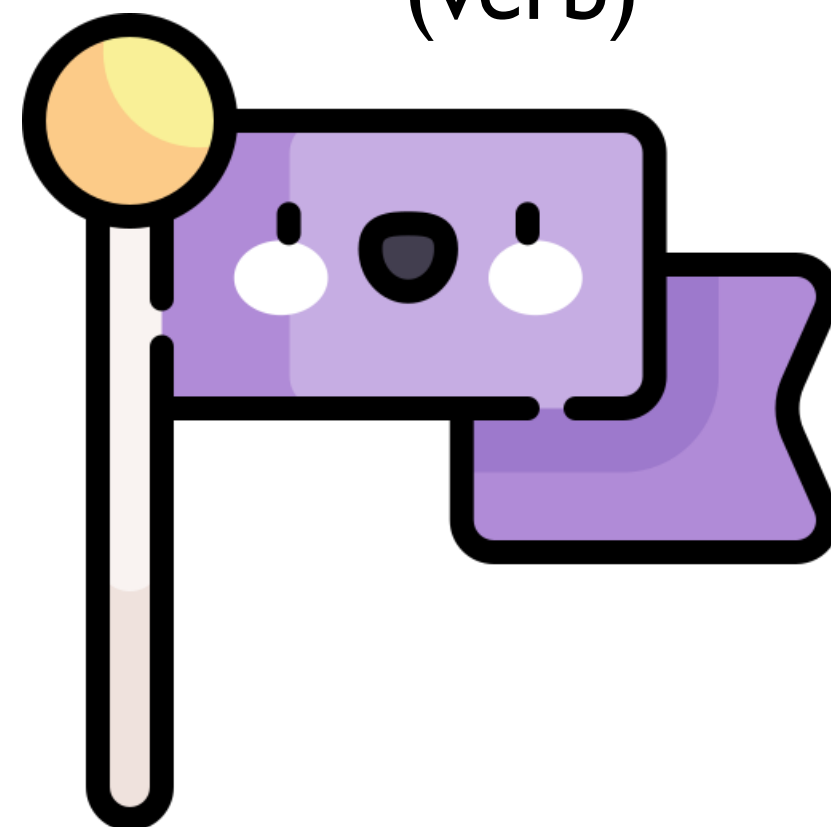
Pronunciation / Syllables

flutter
(flut-ter)

Word Class
(verb)

Definition:

If something thin or light flutters, or if you flutter it, it moves up and down or from side to side with a lot of quick, light movements.



The purple flag **fluttered** in the wind.

Phrases:

peacefully flutter

flutter softly

Synonym:

flicker

ripple

Antonym:

Rhyme:

mutter

butter

Link Word:

wind

fall



Grasshopper Word of the Day

Word of the Day:

costume
(*cos-tume*)

Word Class
(noun)

Pronunciation / Syllables

Definition:

An actor's or performer's costume is the set of clothes they wear while they are performing.



Jenny had a new **costume** for Halloween.

Phrases:

old costume

smelly costume

Synonym:

outfit

uniform

Antonym:

Rhyme:

bloom

room

Link Word:

party

fun



Grasshopper Word of the Day

Word of the Day:

Pronunciation / Syllables

plan
(*plan*)

Word Class
(verb / noun)

Definition:

A plan is a method of achieving something that you have worked out in detail beforehand.



The children **planned** their way to the park.

Phrases:

clever plan

cunning plan

Synonym:

idea

scheme

Antonym:

Rhyme:

man

van

Link Word:

route

event



Shinobi Word of the Day

Word of the Day:

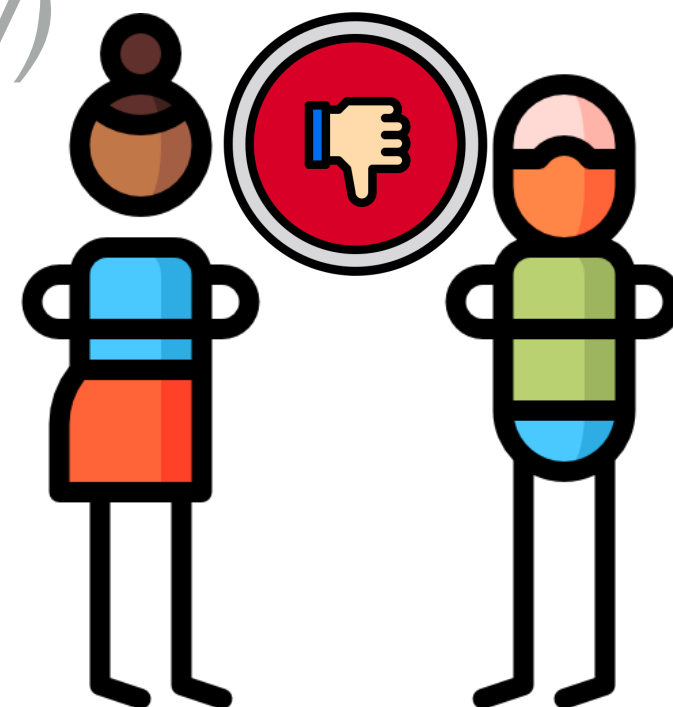
animosity
(an-i-mos-i-ty)

Word Class
(noun)

Pronunciation / Syllables

Definition:

Animosity is a strong feeling of dislike and anger. Animositities are feelings of this kind.



The **animosity** between Jenny and Freya was obvious.

Phrases:

genuine animosity

unknown animosity

Synonym:

hostility

friction

Antonym:

goodwill

friendship

Prefix / Suffix:

Rhyme:

velocity

curiosity

Link Word:

enemy

grudge



Shinobi Word of the Day

Word of the Day:

Pronunciation / Syllables

imply
(im-ply)

Word Class
(verb)

Definition:

If you imply that something is the case, you say something which indicates that it is the case in an indirect way.



His actions **implied** his dislike for the cake.

Phrases:

rudely implied

honestly imply

Synonym:

suggest

hint

Antonym:

direct

Prefix / Suffix:

-ied

-ication

Rhyme:

high

why

Link Word:

sense

show



Shinobi Word of the Day

Word of the Day:

jeopardise
(jeop-ard-ise)

Word Class
(verb)

Pronunciation / Syllables

Definition:

To jeopardise a situation or activity means to do something that may destroy it or cause it to fail.



Being late had **jeopardised** their chance to get in.

Phrases:

unintentionally jeopardise

wanted to jeopardise

Synonym:

threaten

endanger

Antonym:

safeguard

Prefix / Suffix:

-ed

-ing

Rhyme:

Link Word:

fail

risk



Shinobi Word of the Day

Word of the Day:

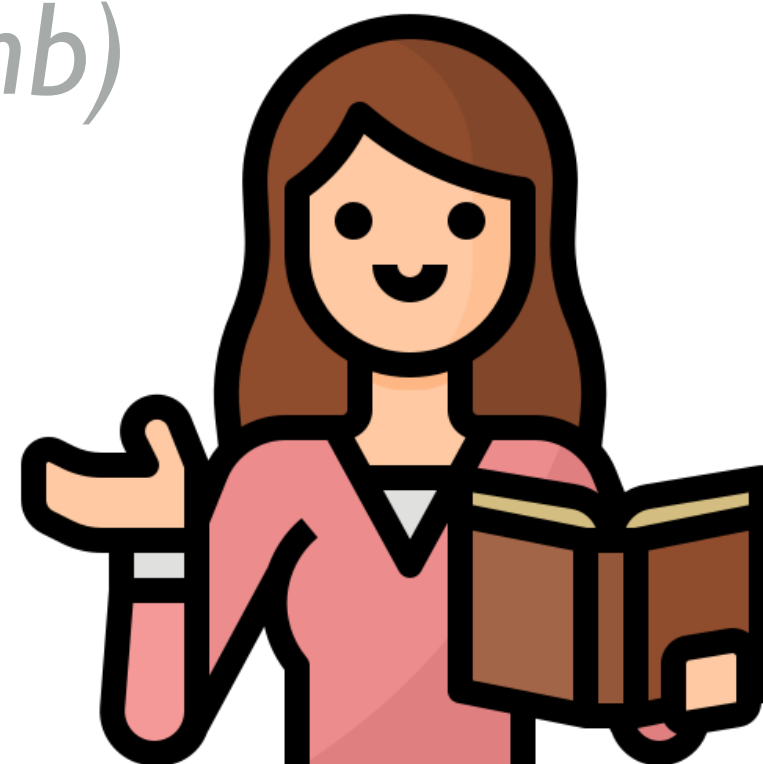
succumb
(*suc-cumb*)

Word Class
(verb)

Pronunciation / Syllables

Definition:

If you succumb to temptation or pressure, you do something that you want to do, or that other people want you to do, although you feel it might be wrong.



Mrs Jones **succumbed** to the children's book request.

Phrases:

slowly succumbed

had succumbed to

Synonym:

give in
surrender

Antonym:

resist

Prefix / Suffix:

-ed
-ing

Rhyme:

thumb
become

Link Word:

pressure
requests



Shinobi Word of the Day

Word of the Day:

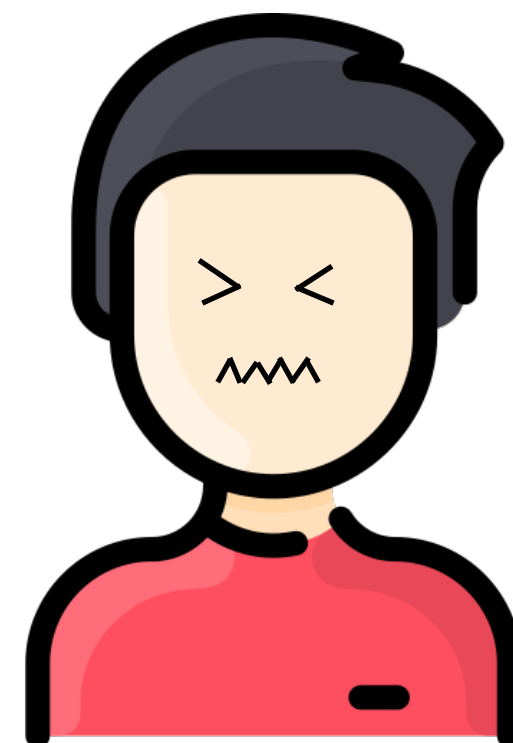
Pronunciation / Syllables

wince
(wince)

Word Class
(verb / noun)

Definition:

If you wince, the muscles of your face tighten suddenly because you have felt a pain or because you have just seen, heard, or remembered something unpleasant.



Alfie **winc**ed as Jeremy tripped on the playground.

Phrases:

winc

suddenl

Synonym:

grimace

cringe

Antonym:

Prefix / Suffix

-ed

-ing

Rhyme:

since

rinse

Link Word:

pain

ouch

Vocabulary Laboratory



Describe / Definition:

Use it in a sentence:

Focus Word (write below):

Word Class:

Synonyms:

(words with same / similar meaning)

Antonyms:

(words with opposite meaning)

Draw your sentence:

Rhymes:

(words that sound the same)

Link Words:

(Example: football = pitch, team, player)

Vocabulary Visualiser

Draw the
Grasshopper words
and bring them to life.



Word: shrink

Word: flutter

Word: plan

Word: kneel



Vocabulary Visualiser

Draw the **Shinobi**
words and bring
them to life.



Word: animosity

Word: imply

Word: wince

Word: jeopardise



Matching Meanings

Draw lines from the **Grasshopper** words to their definitions.



Grasshopper Word

Grasshopper Definitions

shrink

When you ***, you bend your legs so that your knees are touching the ground.



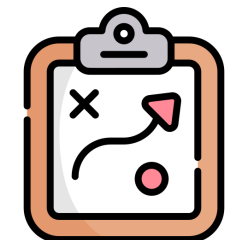
kneel

An actor's or performer's *** is the set of clothes they wear while they are performing.



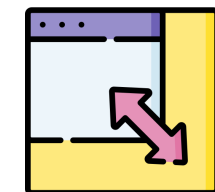
flutter

A *** is a method of achieving something that you have worked out in detail beforehand.



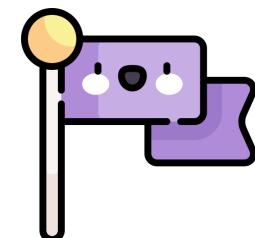
costume

If something *** or something else *** it, it becomes smaller.



plan

If something thin or light ***, or if you *** it, it moves up and down or from side to side with a lot of quick, light movements.



Matching Meanings

Draw lines from the **Shinobi** words to their definitions.

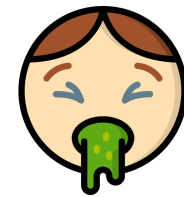


Shinobi Word

Shinobi Definitions

animosity

If you ***, that something is the case, you say something which indicates that it is the case in an indirect way.



imply

If you ***, the muscles of your face tighten suddenly because you have felt a pain or because you have just seen, heard, or remembered something unpleasant.



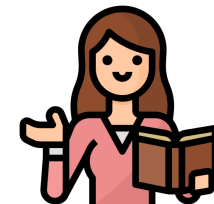
jeopardise

*** is a strong feeling of dislike and anger.
*** are feelings of this kind.



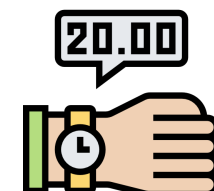
succumb

If you *** to temptation or pressure, you do something that you want to do, or that other people want you to do, although you feel it might be wrong.



wince

To *** a situation or activity means to do something that may destroy it or cause it to fail.





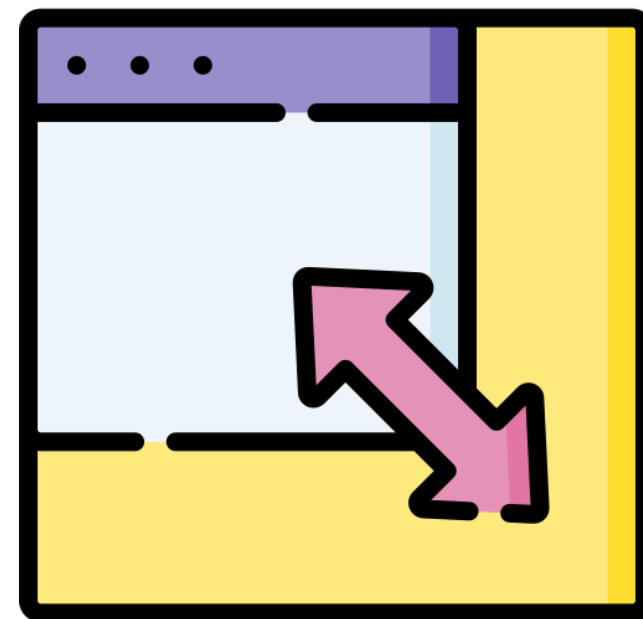
Display Slips

The following slides are for classroom display. As you teach each Word of the Day, words can be displayed in the classroom to enable pupils to use the taught vocabulary in an independent manner.





shrink

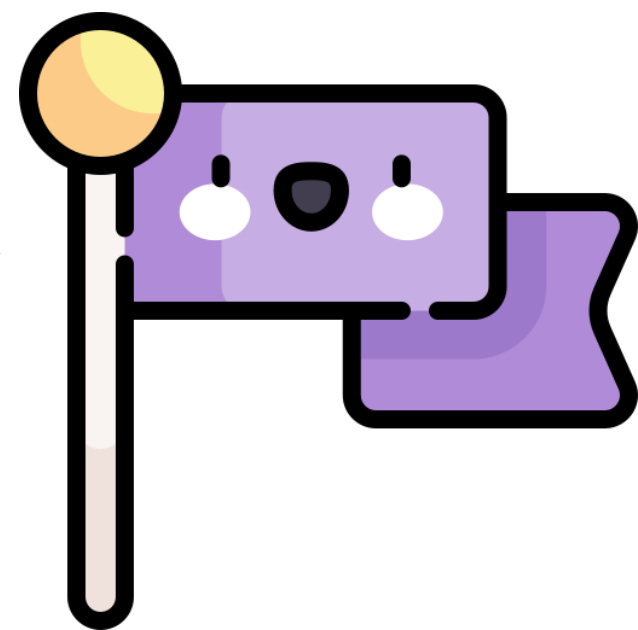


kneel





flutter

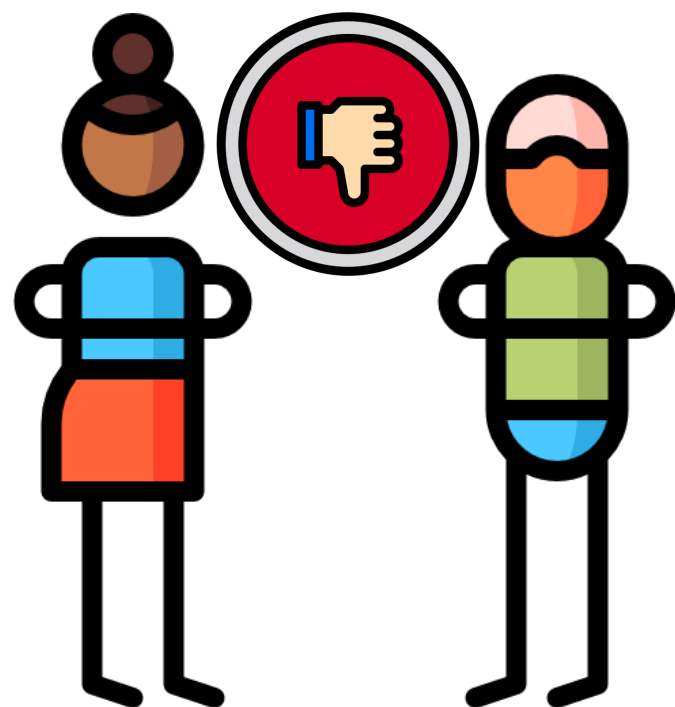
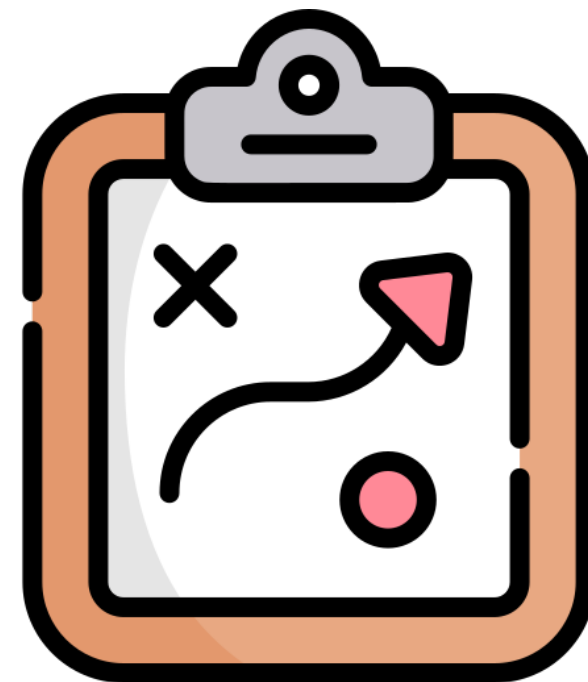


costume





plan



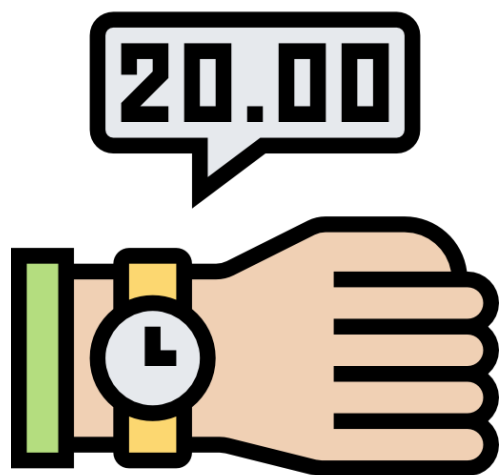
animosity





.

imply

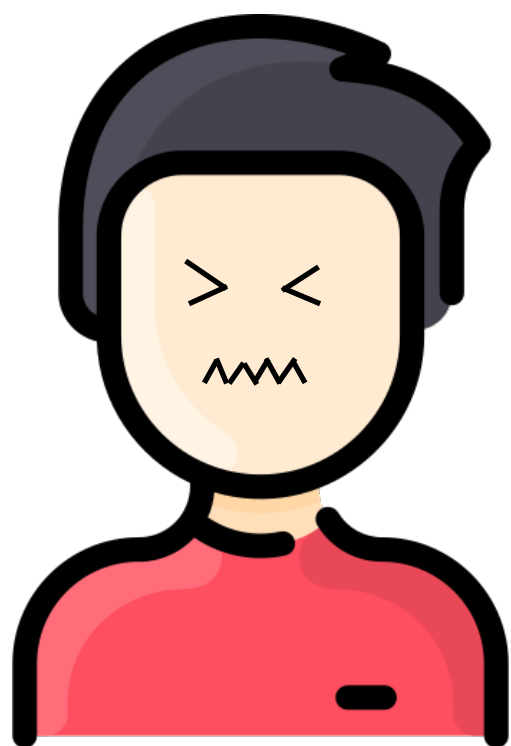
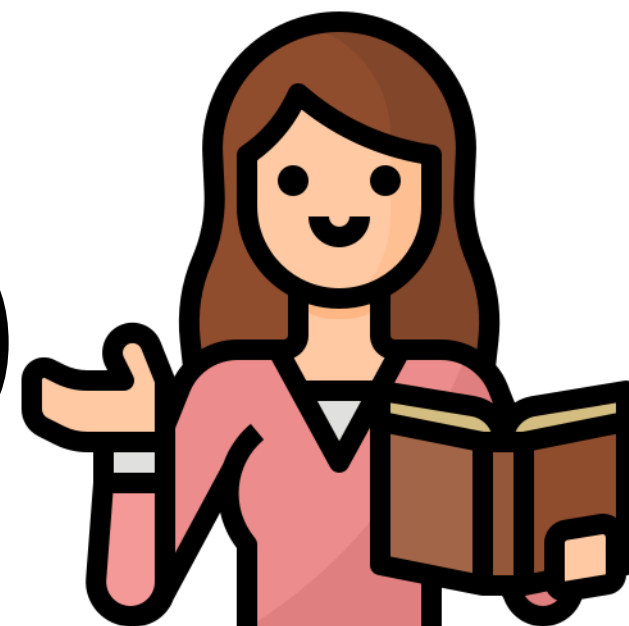


jeopardise





succumb



wince

