

Word of the Day

Autumn Term 2021

Week 2 – 13th September 2021



This Week's Words

Grasshopper

tear
office
spare
chipped
lift

Shinobi

tolerate
mutter
fixation

VN
VOCABULARY NINJA

Grasshopper Word of the Day

Word of the Day: heart
(heart)

Word Class: (noun)

Definition:
Your heart is the organ in your chest that pumps the blood around your body. People also use heart to refer to the area of their chest that is closest to their heart.

My heart was beating in my chest.

Rhyme: heart was beating
part
start

Link Word: blood
body

Shinobi Word of the Day

Word of the Day: calamitous
(ca-lam-i-tous)

Word Class: (adjective)

Definition:
If you describe an event or situation as calamitous, you mean it is very unfortunate or serious.

The calamitous twins destroyed the play room.

Phrases: the calamitous pair
completely calamitous

Synonym: disastrous
devastating

Antonym: good

Prefix / Suffix:

Rhyme: glamorous

Link Word: disaster
bad

'Words unlock the doors to a world of understanding...'

This Week's Words

Grasshopper

search

boil

refill

close

polish

Shinobi

comfortable

invade

investigate

ruthless

focus



VOCABULARY NINJA

Grasshopper (Tier 1)

search

boil

refill

close

polish



VOCABULARY NINJA

Shinobi (Tier 2)

comfortable

invade

investigate

ruthless

focus



VOCABULARY NINJA



Grasshopper Word of the Day

Word of the Day:

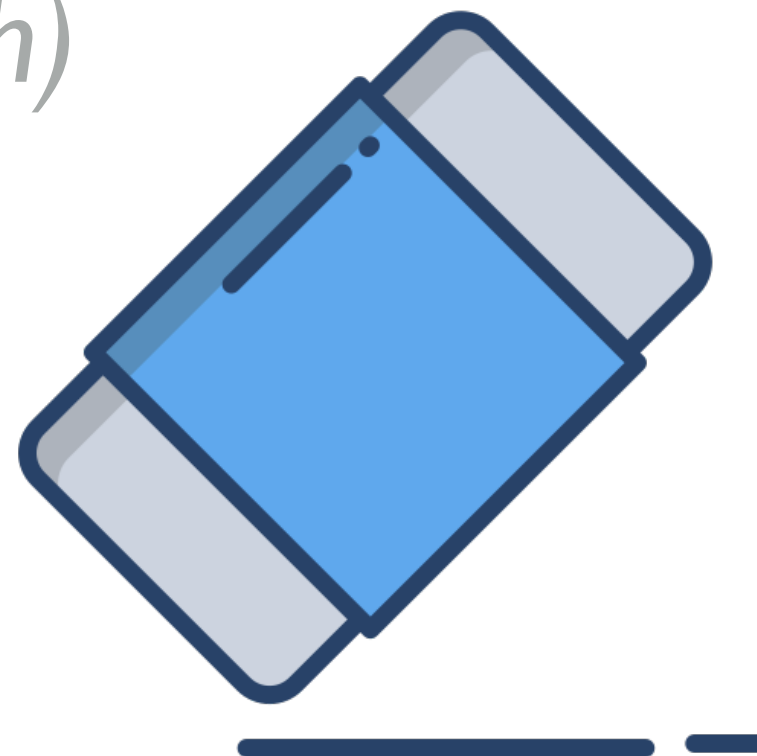
Pronunciation / Syllables

search
(search)

Word Class
(verb / noun)

Definition:

If you search for something or someone, you look carefully for them.



Julie was **searching** for he missing rubber.

Phrases:

was searching for

searched carefully for

Synonym:

hunt

look

Antonym:

Rhyme:

church

perch

Link Word:

lose

find



Grasshopper Word of the Day

Word of the Day:

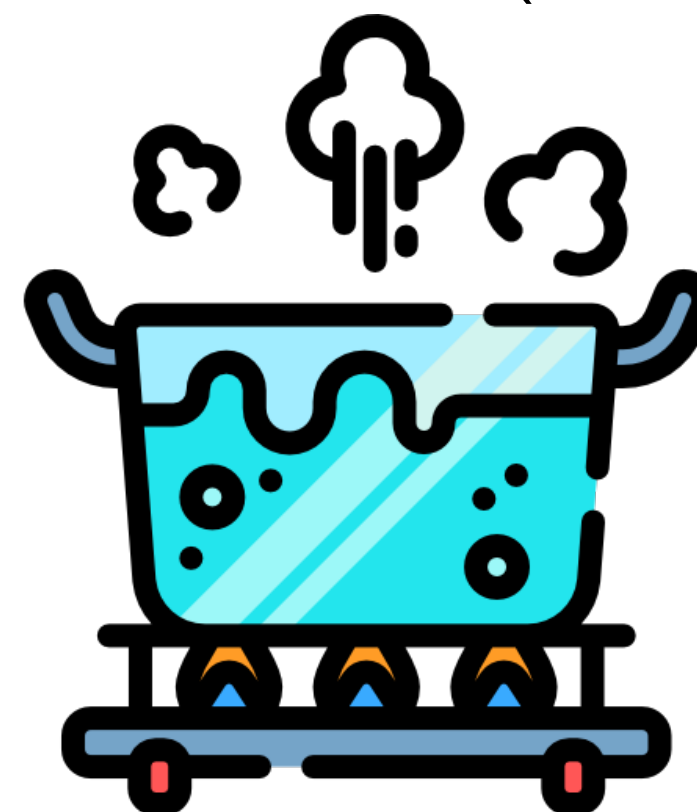
Pronunciation / Syllables

boil
(boil)

Word Class
(verb)

Definition:

When you boil a kettle or pan, or put it on to boil, you heat the water inside it until it boils.



Mrs Baines **boiled** the water for the experiment.

Phrases:

quickly boiled

slowly boiled

Synonym:

simmer

bubble

Antonym:

freeze

Rhyme:

coil

foil

Link Word:

drink

water



Grasshopper Word of the Day

Word of the Day:

Pronunciation / Syllables

refill
(re-fill)

Word Class
(verb / noun)

Definition:

If you refill something, you fill it again after it has been emptied.



Alexia **refilled** her water bottle.

Phrases:

quickly refilled

slowly refilled

Synonym:

Antonym:

Rhyme:

Link Word:

water

emotions



Grasshopper Word of the Day

Word of the Day:

Pronunciation / Syllables

close
(close)

Word Class
(verb)

Definition:

When you close something such as a door or lid or when it closes, it moves so that a hole, gap, or opening is covered.



Mufasa **closed** the the door gently.

Phrases:

softly closed

gently closed

Synonym:

shut

slam

Antonym:

open

unlock

Rhyme:

froze

toes

Link Word:

door

window



Grasshopper Word of the Day

Word of the Day:

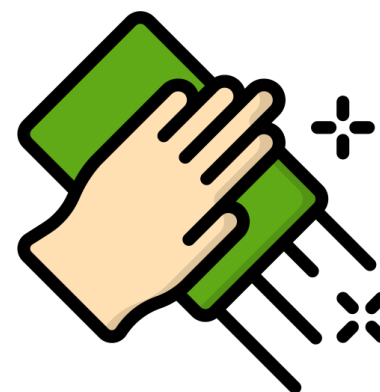
Pronunciation / Syllables

polish
(po-lish)

Word Class
(verb / noun)

Definition:

If you polish something, you put polish on it or rub it with a cloth to make it shine.



Ruby was **polishing** the book covers in the library.

Phrases:

attentively polished

lovingly polished

Synonym:

shine

wax

Antonym:

Rhyme:

abolish

demolish

Link Word:

pots

car



Shinobi Word of the Day

Word of the Day: **comfortable**

Word Class
(adjective)

Pronunciation / Syllables

(com-fort-a-ble)

Definition:

If a piece of furniture or an item of clothing is comfortable, it makes you feel physically relaxed when you use it, for example because it is soft.



Romesh felt **comfortable** around his new friends.

Phrases:

very comfortable

extremely comfortable

Synonym:

snug

at ease

Antonym:

uncomfortable

threatened

Prefix / Suffix:

un-

-ly

Rhyme:

uncomfortable

Link Word:

clothes

seat



Shinobi Word of the Day

Word of the Day:

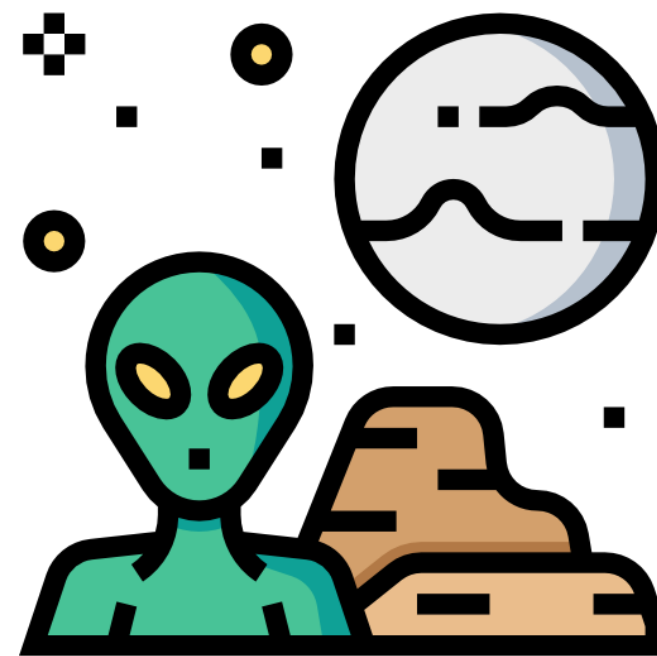
invade
(in-vade)

Word Class
(verb)

Pronunciation / Syllables

Definition:

If you say that people or animals invade a place, you mean that they enter it in large numbers, often in a way that is unpleasant or difficult to deal with.



Aliens **invaded** Earth from another planet.

Phrases:

suddenly invaded

the cruel invasion of

Synonym:

attack

raid

Antonym:

withdraw

Prefix / Suffix:

-sion

-ed

Rhyme:

trade

afraid

Link Word:

war

space



Shinobi Word of the Day

Word of the Day: **investigate**

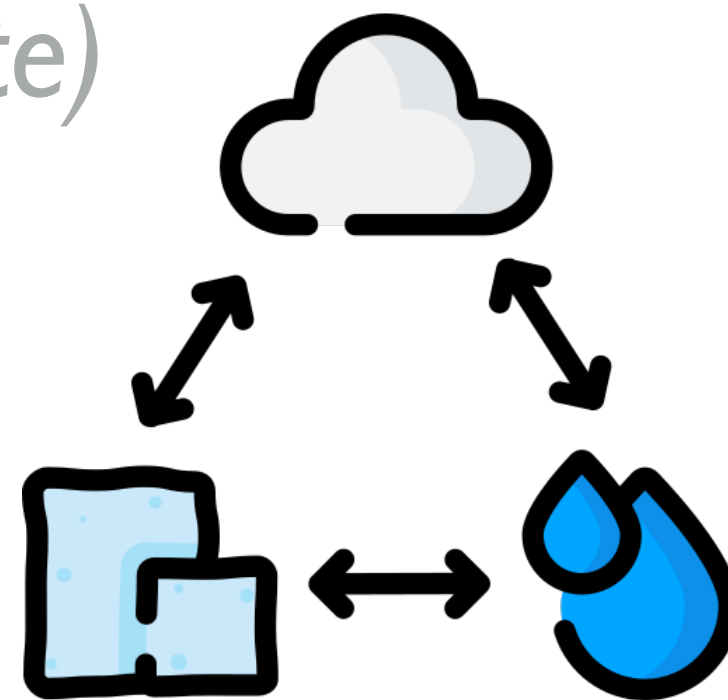
Word Class
(verb)

Pronunciation / Syllables

(*in-ves-ti-gate*)

Definition:

If someone, especially an official, investigates an event, situation, or claim, they try to find out what happened or what is the truth.



Class 5 were **investigating** states of matter.

Phrases:

carefully investigated

thoroughly investigated the

Synonym:

Antonym:

Prefix / Suffix:

Rhyme:

Link Word:

study

-tion

state

topic

examine

re-

weight

police



Shinobi Word of the Day

Word of the Day:

Pronunciation / Syllables

ruthless
(*ruth-less*)

Word Class
(adjective)

Definition:

If you say that someone is ruthless, you mean that you disapprove of them because they are very harsh or cruel, and will do anything that is necessary to achieve what they want.



Jeremy was **ruthless** when it came to picking teams.

Phrases:

the extremely ruthless

rather ruthlessly

Synonym:

merciless

cut-throat

Antonym:

merciful

compassionate

Prefix / Suffix:

-ness

-ly

Rhyme:

toothless

truthless

Link Word:

decision

people



Shinobi Word of the Day

Word of the Day:

Pronunciation / Syllables

focus
(fo-cus)

Word Class
(verb)

Definition:

Your focus on something is the special attention that you pay it.



Isabelle was totally **focused** on her painting.

Phrases:

complete focus

pure focus

Synonym:

Antonym:

Prefix / Suffix

Rhyme:

Link Word:

attention

concentration

-ing

-ed

hocus

pocus

love

quality

Vocabulary Laboratory



Describe / Definition:

Use it in a sentence:

Focus Word (write below):

Word Class:

Synonyms:

(words with same / similar meaning)

Antonyms:

(words with opposite meaning)

Draw your sentence:

Rhymes:

(words that sound the same)

Link Words:

(Example: football = pitch, team, player)

Vocabulary Visualiser

Draw the
Grasshopper words
and bring them to life.



Word: search

Word: refill

Word: close

Word: boil



Vocabulary Visualiser

Draw the **Shinobi**
words and bring
them to life.



Word: comfortable

Word: invade

Word: investigate

Word: ruthless



Matching Meanings

Draw lines from the **Grasshopper** words to their definitions.



Grasshopper Word

Grasshopper Definitions

search

If you *** for something or someone, you look carefully for them.



boil

If you *** something, you fill it again after it has been emptied.



refill

If you *** something, you put polish on it or rub it with a cloth to make it shine.



close

When you *** a kettle or pan, or put it on to ***, you heat the water inside it until it boils.



polish

When you *** something such as a door or lid or when it ***, it moves so that a hole, gap, or opening is covered.



Matching Meanings

Draw lines from the **Shinobi** words to their definitions.

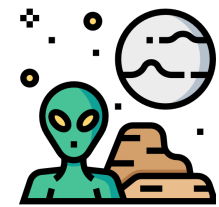


Shinobi Word

Shinobi Definitions

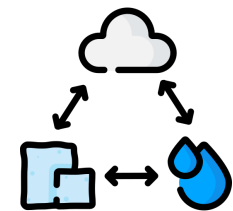
comfortable

If you say that people or animals *** a place, you mean that they enter it in large numbers, often in a way that is unpleasant or difficult to deal with.



invade

If someone, especially an official, *** an event, situation, or claim, they try to find out what happened or what is the truth.



investigate

If you say that someone is ***, you mean that you disapprove of them because they are very harsh or cruel, and will do anything that is necessary to achieve what they want.



ruthless

Your *** on something is the special attention that you pay it.



focus

If a piece of furniture or an item of clothing is ***, it makes you feel physically relaxed when you use it, for example because it is soft.





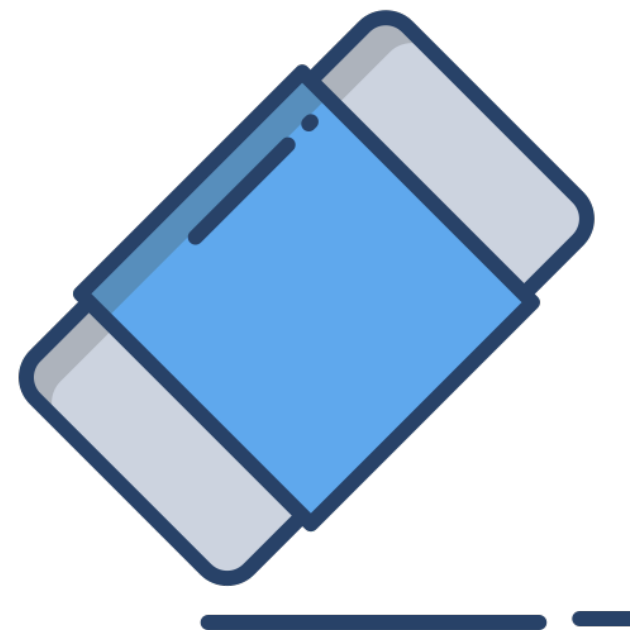
Display Slips

The following slides are for classroom display. As you teach each Word of the Day, words can be displayed in the classroom to enable pupils to use the taught vocabulary in an independent manner.





search



boil





refill

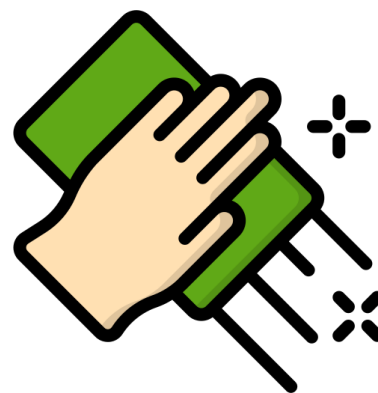


close





polish

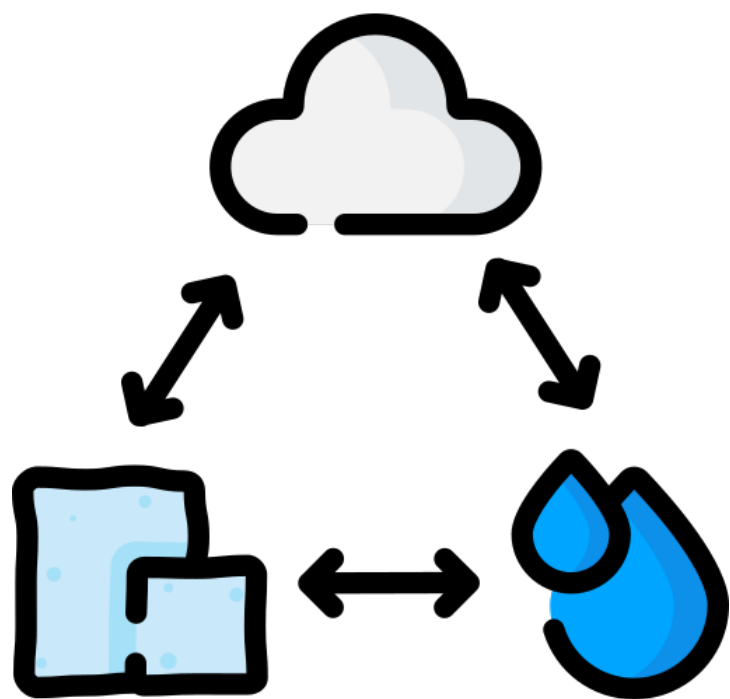
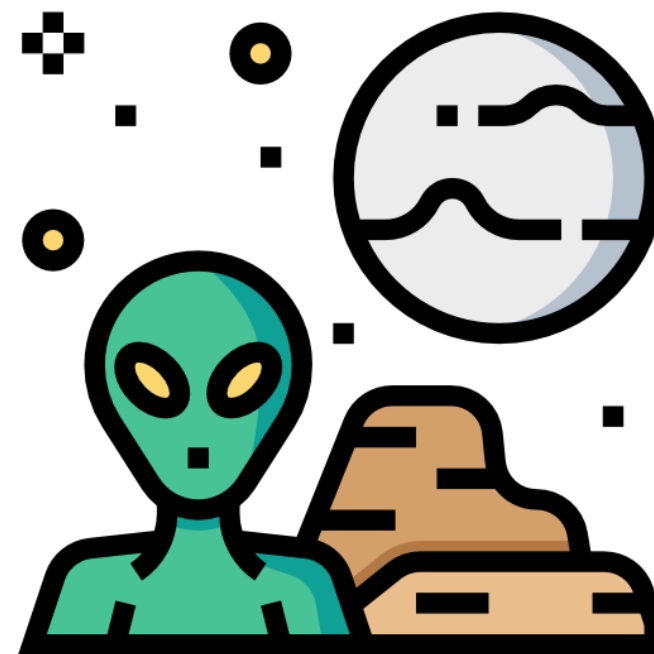


comfortable





invade



investigate





ruthless



focus

