

Word of the Day

Autumn Term 2021

Week 3 – 20th September 2021



This Week's Words

Grasshopper

tear
office
spare
chipped
lift

Shinobi

tolerate
mutter
fixation

VN
VOCABULARY NINJA

Grasshopper Word of the Day

Word of the Day: heart
(heart)

Word Class: (noun)

Definition:
Your heart is the organ in your chest that pumps the blood around your body. People also use heart to refer to the area of their chest that is closest to their heart.

My heart was beating in my chest.

Rhyme: heart was beating
part
start

Link Word: blood
body

Shinobi Word of the Day

Word of the Day: calamitous
(ca-lam-i-tous)

Word Class: (adjective)

Definition:
If you describe an event or situation as calamitous, you mean it is very unfortunate or serious.

The calamitous twins destroyed the play room.

Phrases: the calamitous pair
completely calamitous

Synonym: disastrous
devastating

Antonym: good

Prefix / Suffix:

Rhyme: glamorous

Link Word: disaster
bad

'Words unlock the doors to a world of understanding...'

This Week's Words

Grasshopper

noise

face

scream

twist

excuse

Shinobi

obvious

pale

sensational

delicate

grim



VOCABULARY NINJA

Grasshopper (Tier 1)

noise

face

scream

twist

excuse



VOCABULARY NINJA

Shinobi (Tier 2)

obvious

pale

sensational

delicate

grim



VOCABULARY NINJA



Grasshopper Word of the Day

Word of the Day:

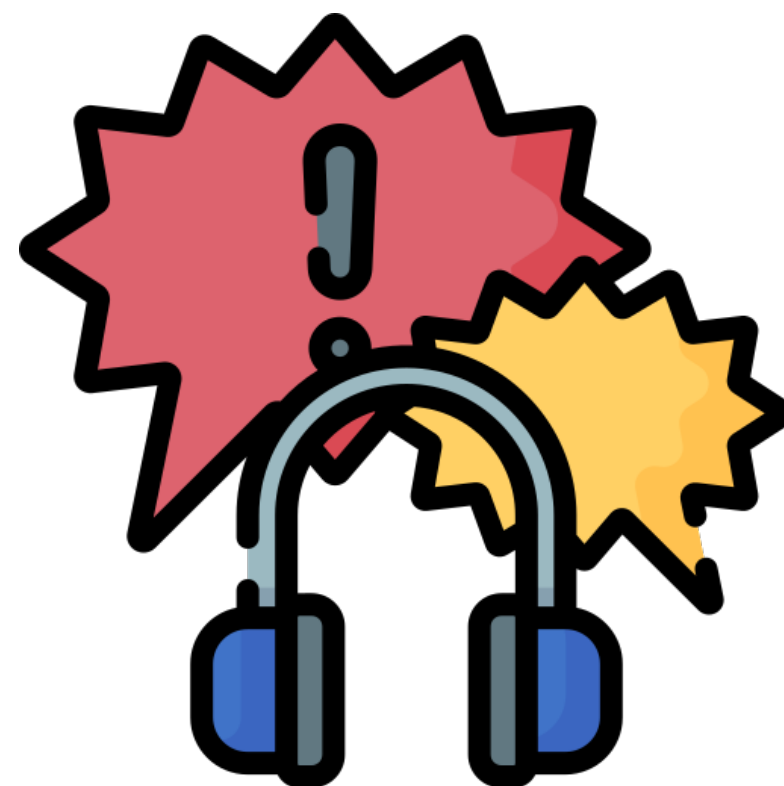
Pronunciation / Syllables

Definition:

Noise is a loud or unpleasant sound.

noise
(noise)

Word Class
(noun)



There was a loud **noise** coming from the school hall.

Phrases:

unusual noise

noisy room

Synonym:

hubbub

din

Antonym:

silence

Rhyme:

boys

toys

Link Word:

music

pollution



Grasshopper Word of the Day

Word of the Day:

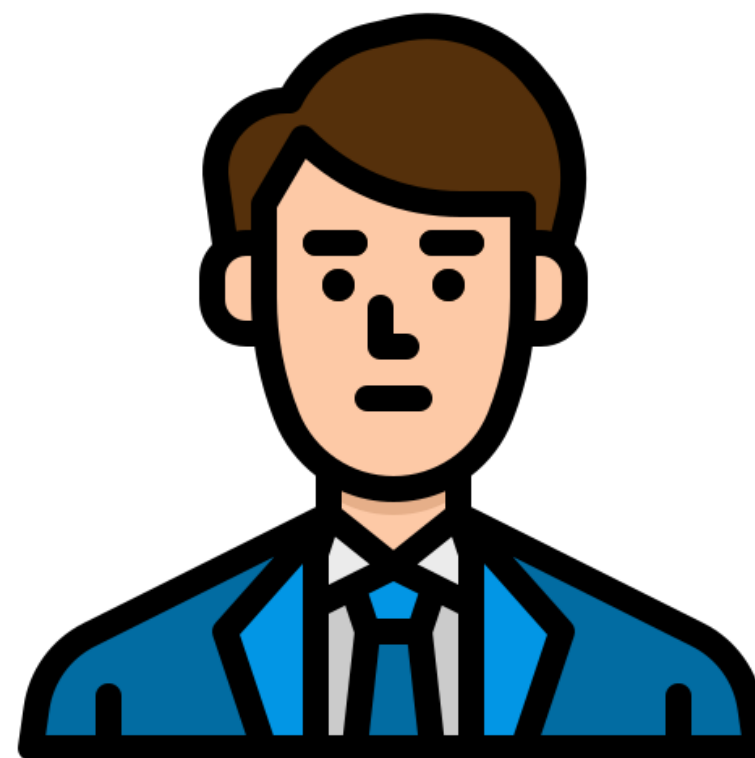
Pronunciation / Syllables

face
(face)

Word Class
(verb / noun)

Definition:

If you face someone or something, you turn so that you are looking at them.



Mr Jones turned and **faced** the children.

Phrases:

quickly faced

face-to-face with

Synonym:

Antonym:

Rhyme:

Link Word:

case

ignore

space

listen



Grasshopper Word of the Day

Word of the Day:

scream
(scream)

Word Class
(verb / noun)

Pronunciation / Syllables

Definition:

When someone screams, they make a very loud, high-pitched cry, for example because they are in pain or are very frightened.



Children were running and **screaming** on the playground.

Phrases:

a shrill scream

screamed loudly

Synonym:

shriek

screech

Antonym:

whisper

Rhyme:

team

dream

Link Word:

scared

excited



Grasshopper Word of the Day

Word of the Day:

Pronunciation / Syllables

twist
(*twist*)

Word Class
(verb)

Definition:

If you twist something, you turn it to make a spiral shape, for example by turning the two ends of it in opposite directions.



The children pulled and **twisted** different materials.

Phrases:

twisted and twisted

gently twisted the

Synonym:

crumple

mangle

Antonym:

straighten

Rhyme:

list

resist

Link Word:

material

body



Grasshopper Word of the Day

Word of the Day:

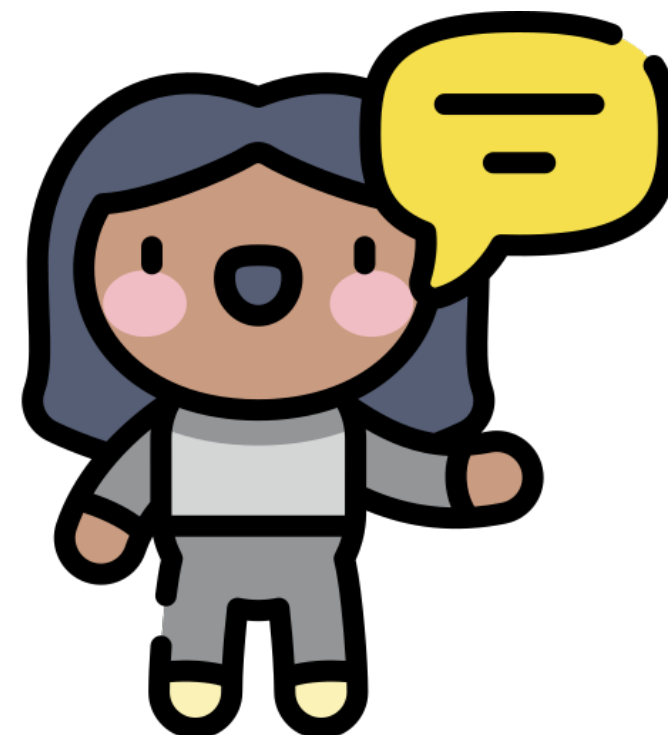
Pronunciation / Syllables

excuse
(ex-cuse)

Word Class
(noun)

Definition:

An excuse is a reason which you give in order to explain why something has been done or has not been done, or in order to avoid doing something.



The was no **excuse** for talking over the teacher.

Phrases:

gave an excuse for

a poor excuse

Synonym:

reason

plea

Antonym:

Rhyme:

reduce

loose

Link Word:

lies

truth



Shinobi Word of the Day

Word of the Day:

Pronunciation / Syllables

obvious
(ob-vi-ous)

Word Class
(adjective)

Definition:

If something is obvious, it is easy to see or understand.



The answer was **obvious** to everyone but Richard.

Phrases:

very obvious

so obvious

Synonym:

clear

apparent

Antonym:

obscure

Prefix / Suffix:

non-

-ly

Rhyme:

Link Word:

answer

idea



Shinobi Word of the Day

Word of the Day:

Pronunciation / Syllables

pale
(*pale*)

Word Class
(adjective)

Definition:

If something is pale, it is very light in colour or almost white.



Alex's face turned **pale** when he saw what was for lunch.

Phrases:

pale and unwell

became pale

Synonym:

pasty

grey

Antonym:

flushed

rosy

Prefix / Suffix:

-r

-ness

Rhyme:

scale

detail

Link Word:

colour

person



Shinobi Word of the Day

Word of the Day: **sensational**

Word Class
(adjective)

Pronunciation / Syllables

(*sen-sa-tion-al*)

Definition:

A sensational result, event, or situation is so remarkable that it causes great excitement and interest.



The class assembly was **sensational**!

Phrases:

truly sensational

completely sensational

Synonym:

amazing

astonishing

Antonym:

Prefix / Suffix:

-ly

un-

Rhyme:

educational

inspirational

Link Word:

performance

feeling



Shinobi Word of the Day

Word of the Day:

Pronunciation / Syllables

delicate
(del-i-cate)

Word Class
(adjective)

Definition:

If something is delicate, it is easy to harm, damage, or break, and needs to be handled or treated carefully.



They took turns at holding the **delicate** Roman vase.

Phrases:

delicate and breakable

expensive and delicate

Synonym:

fragile

breakable

Antonym:

strong

durable

Prefix / Suffix:

-ness

-ly

Rhyme:

Link Word:

item

feeling



Shinobi Word of the Day

Word of the Day:

Pronunciation / Syllables

grim
(grim)

Word Class
(adjective)

Definition:

A situation or piece of information that is grim is unpleasant, depressing, and difficult to accept.



The weather outside was looking particularly **grim**.

Phrases:

a grim look

looked grimly at

Synonym:

bleak

dark

Antonym:

pleasant

Prefix / Suffix

-ly

-ace

Rhyme:

swim

limb

Link Word:

decision

outcome

Vocabulary Laboratory



Describe / Definition:

Use it in a sentence:

Focus Word (write below):

Word Class:

Synonyms:

(words with same / similar meaning)

Antonyms:

(words with opposite meaning)

Draw your sentence:

Rhymes:

(words that sound the same)

Link Words:

(Example: football = pitch, team, player)

Vocabulary Visualiser

Draw the
Grasshopper words
and bring them to life.



Word: noise

Word: scream

Word: twist

Word: excuse



Vocabulary Visualiser

Draw the **Shinobi**
words and bring
them to life.



Word: pale

Word: sensational

Word: delicate

Word: grim



Matching Meanings

Draw lines from the **Grasshopper** words to their definitions.



Grasshopper Word

Grasshopper Definitions

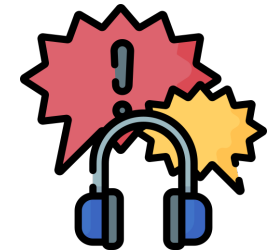
noise

When someone ***, they make a very loud, high-pitched cry, for example because they are in pain or are very frightened.



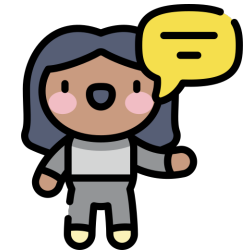
face

*** is a loud or unpleasant sound.



scream

An *** is a reason which you give in order to explain why something has been done or has not been done, or in order to avoid doing something.



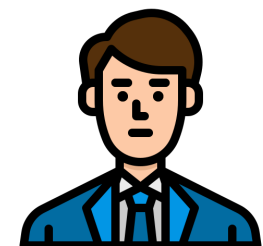
twist

If you *** something, you turn it to make a spiral shape, for example by turning the two ends of it in opposite directions.



excuse

If you *** someone or something, you turn so that you are looking at them.



Matching Meanings

Draw lines from the **Shinobi** words to their definitions.



Shinobi Word

Shinobi Definitions

obvious

If something is ***, it is very light in colour or almost white.



pale

A *** result, event, or situation is so remarkable that it causes great excitement and interest.



sensational

If something is ***, it is easy to see or understand.



delicate

A situation or piece of information that is *** is unpleasant, depressing, and difficult to accept.



grim

If something is ***, it is easy to harm, damage, or break, and needs to be handled or treated carefully.





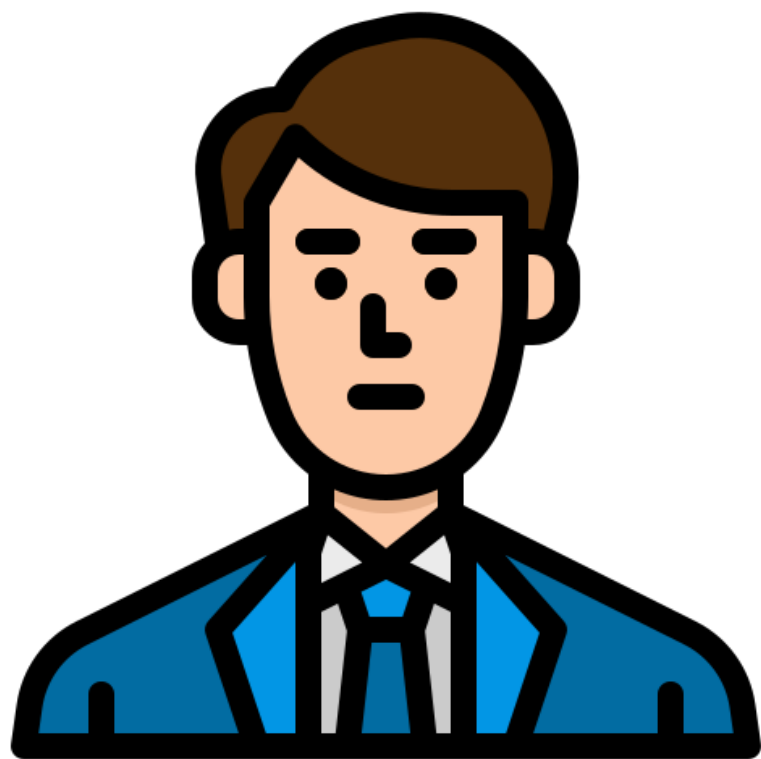
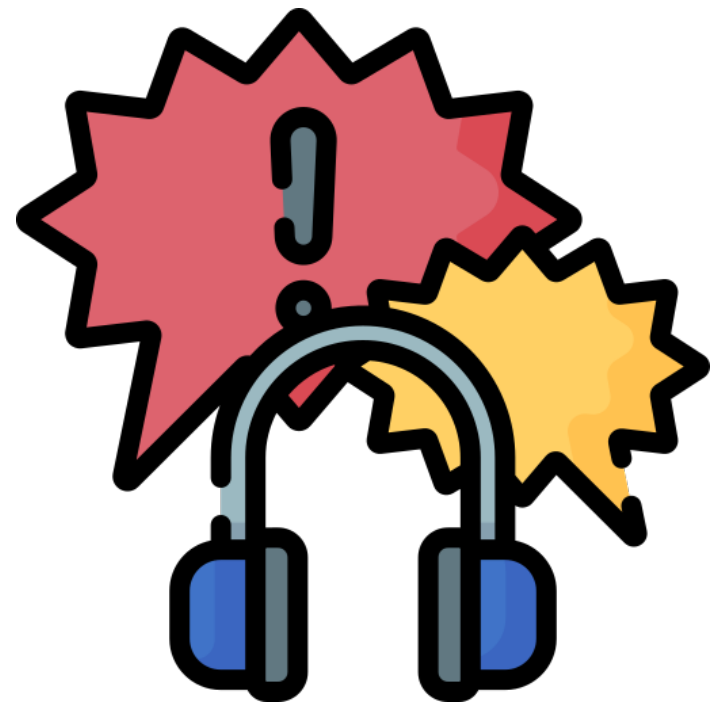
Display Slips

The following slides are for classroom display. As you teach each Word of the Day, words can be displayed in the classroom to enable pupils to use the taught vocabulary in an independent manner.





noise



face





scream

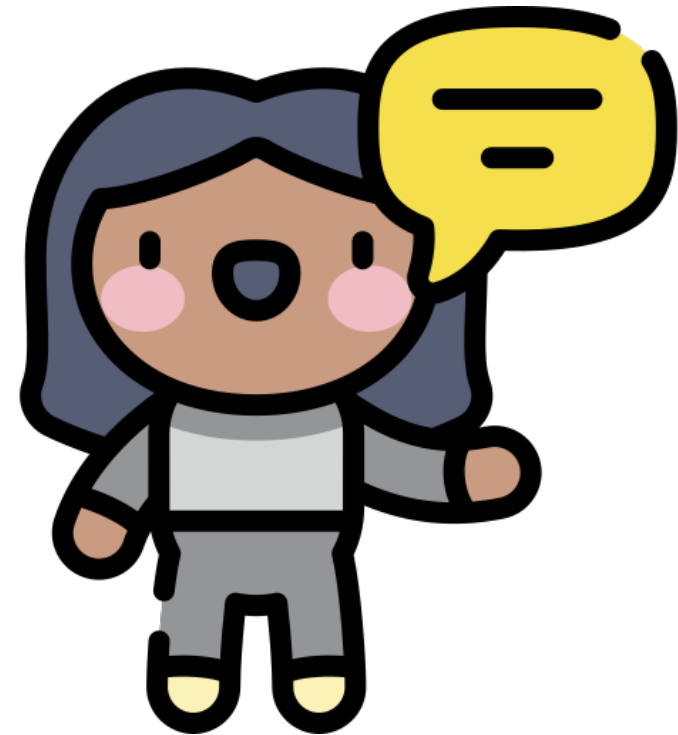


twist





excuse



obvious





pale

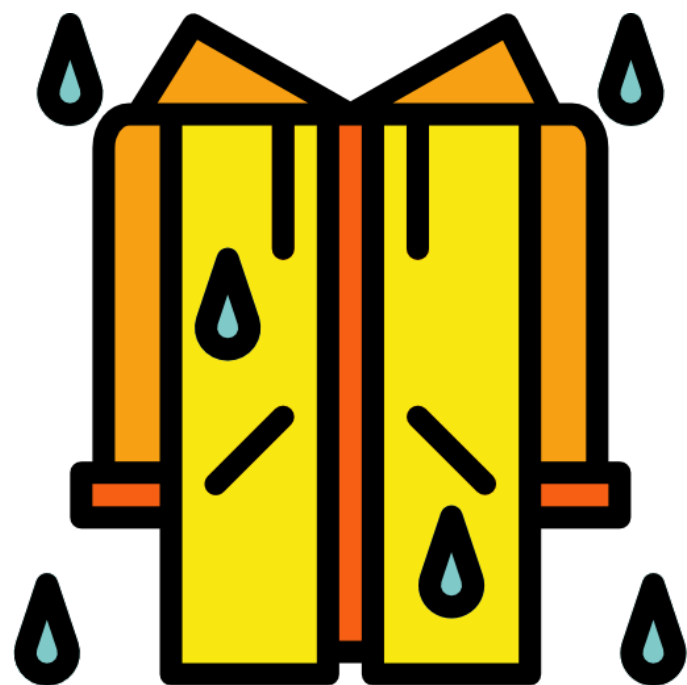


sensational





delicate



grim

