

Word of the Day

Autumn Term 2021

Week 4 – 27th September 2021



This Week's Words

Grasshopper

tear
office
spare
chipped
lift

Shinobi

tolerate
mutter
fixation

VN
VOCABULARY NINJA

VN **Grasshopper Word of the Day**

Word of the Day: heart
(heart)

Word Class: (noun)

Definition:
Your heart is the organ in your chest that pumps the blood around your body. People also use heart to refer to the area of their chest that is closest to their heart.

My heart was beating in my chest.

Rhyme: heart was beating
part
start

Link Word: blood
body

VN **Shinobi Word of the Day**

Word of the Day: calamitous
(ca-lam-i-tous)

Word Class: (adjective)

Definition:
If you describe an event or situation as calamitous, you mean it is very unfortunate or serious.

The calamitous twins destroyed the play room.

Phrases: the calamitous pair
completely calamitous

Synonym: disastrous
devastating

Antonym: good

Prefix / Suffix:

Rhyme: glamorous

Link Word: disaster
bad

'Words unlock the doors to a world of understanding...'

This Week's Words

Grasshopper

accept

decline

beneath

boast

sweaty

Shinobi

amble

cascade

entire

grieve

loathsome



VOCABULARY NINJA

Grasshopper (Tier 1)

accept

decline

beneath

boast

sweaty



VOCABULARY NINJA

Shinobi (Tier 2)

amble

cascade

entire

grieve

loathsome



VOCABULARY NINJA



Grasshopper Word of the Day

Word of the Day:

Pronunciation / Syllables

accept
(ac-cept)

Word Class
(verb)

Definition:

If you accept something that you have been offered, you say yes to it or agree to take it.



Prinesh **accepted** her award in the assembly.

Phrases:

gratefully accepted

shyly accepted

Synonym:

receive

Antonym:

decline

Rhyme:

kept

slept

Link Word:

choose

offer



Grasshopper Word of the Day

Word of the Day:

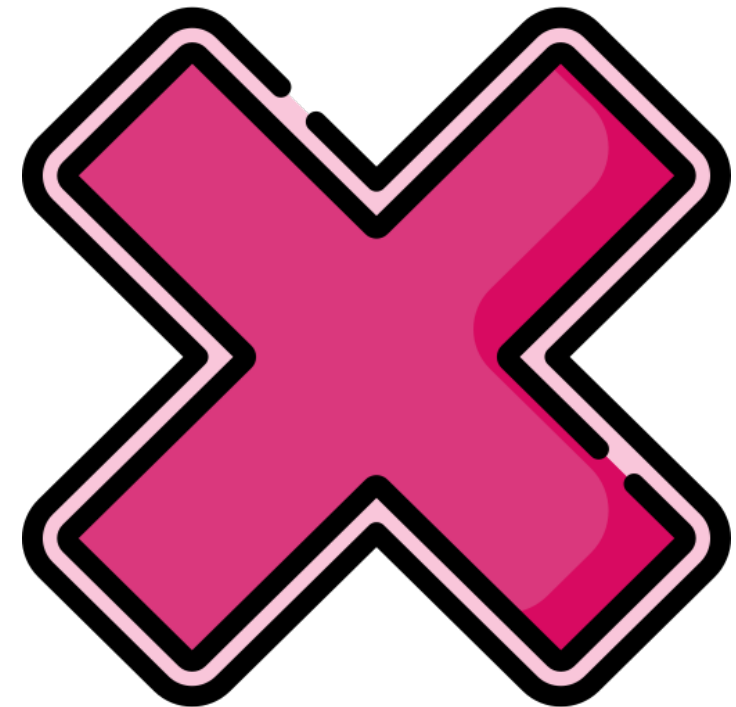
Pronunciation / Syllables

decline
(de-cline)

Word Class
(verb)

Definition:

If you decline something or decline to do something, you politely refuse to accept it or do it.



Freddy **declined** to give a reason for being rude.

Phrases:

gently declined

quickly declined

Synonym:

reject

refuse

Antonym:

accept

Rhyme:

line

sign

Link Word:

wrong

offer



Grasshopper Word of the Day

Word of the Day:

beneath
(be-neath)

Word Class
(preposition)

Pronunciation / Syllables

Definition:

Something that is beneath
another thing is under the other
thing.



The children sat **beneath** the tree branches.

Phrases:

beneath the sky

beneath and above

Synonym:

under

below

Antonym:

above

Rhyme:

teeth

wreath

Link Word:

shade

larger



Grasshopper Word of the Day

Word of the Day:

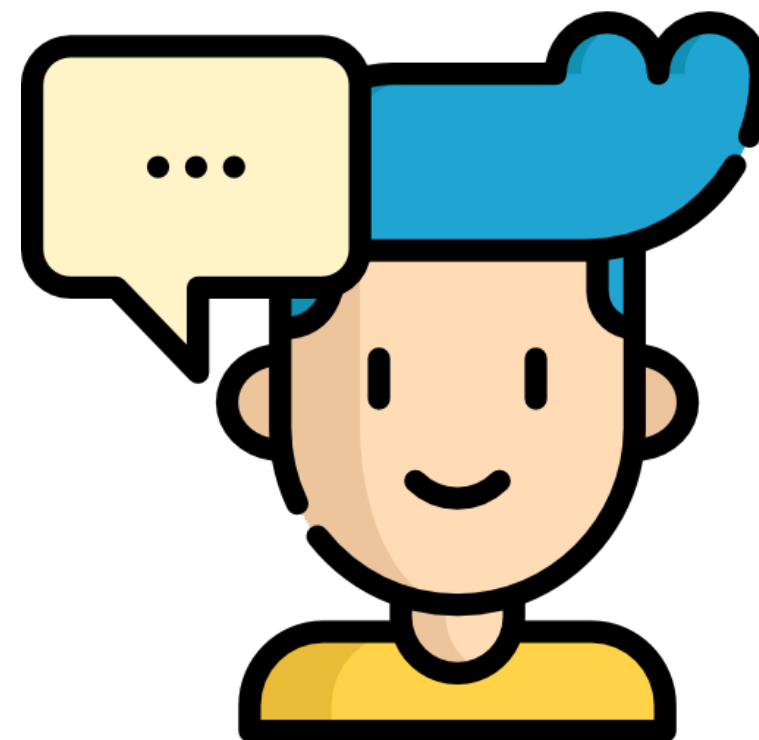
Pronunciation / Syllables

boast
(boast)

Word Class
(verb)

Definition:

If someone boasts about something that they have done or that they own, they talk about it very proudly, in a way that other people may find irritating or offensive.



Ramesh **boasted** to his friends about his spelling score.

Phrases:

boasted loudly

always boasting

Synonym:

brag

crow

Antonym:

belittle

Rhyme:

post

coast

Link Word:

rude

annoying



Grasshopper Word of the Day

Word of the Day:

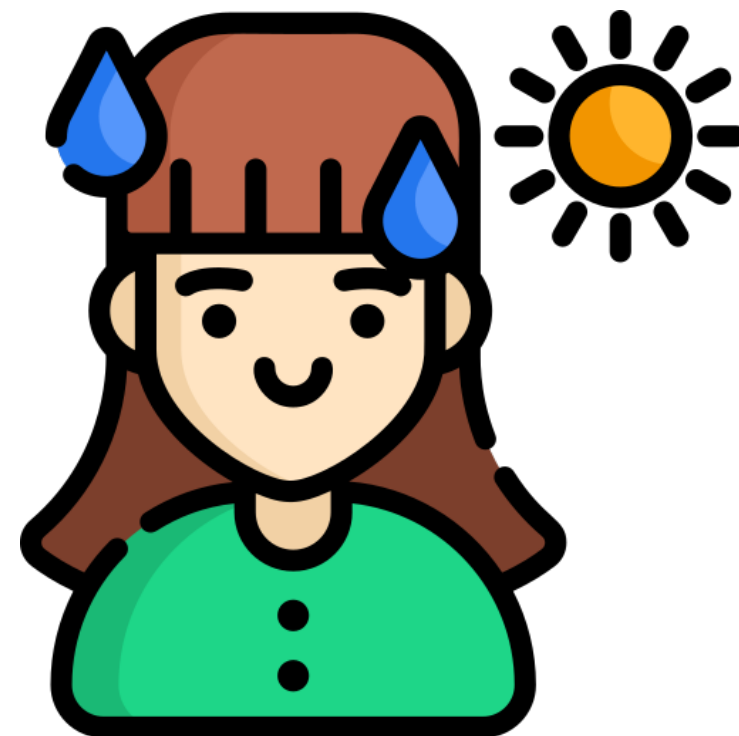
Pronunciation / Syllables

sweaty
(sweat-y)

Word Class
(adjective)

Definition:

If parts of your body or your clothes are sweaty, they are soaked or covered with sweat.



Everyone was very **sweaty** after lunchtime.

Phrases:

hot and sweaty

sweat dripping

Synonym:

clammy

moist

Antonym:

cool

dry

Rhyme:

petty

confetti

Link Word:

exercise

sunshine



Shinobi Word of the Day

Word of the Day:

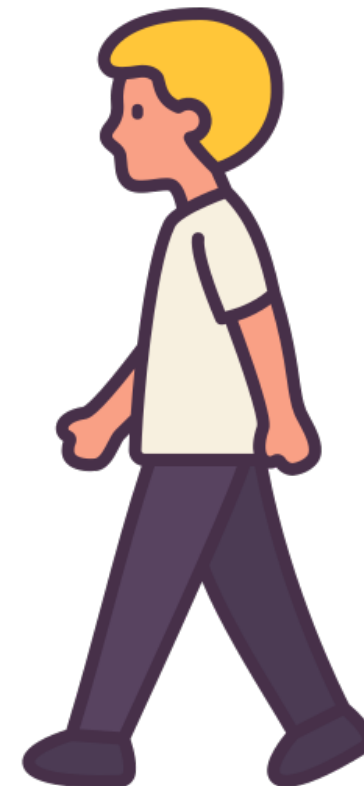
Pronunciation / Syllables

amble
(am-ble)

Word Class
(verb)

Definition:

When you amble, you walk slowly and in a relaxed manner.



Mr Robson **ambled** along the corridor.

Phrases:

ambled peacefully

slowly ambled

Synonym:

stroll

saunter

Antonym:

stride

Prefix / Suffix:

-ed

-ing

Rhyme:

scramble

bramble

Link Word:

walking

relaxed



Shinobi Word of the Day

Word of the Day:

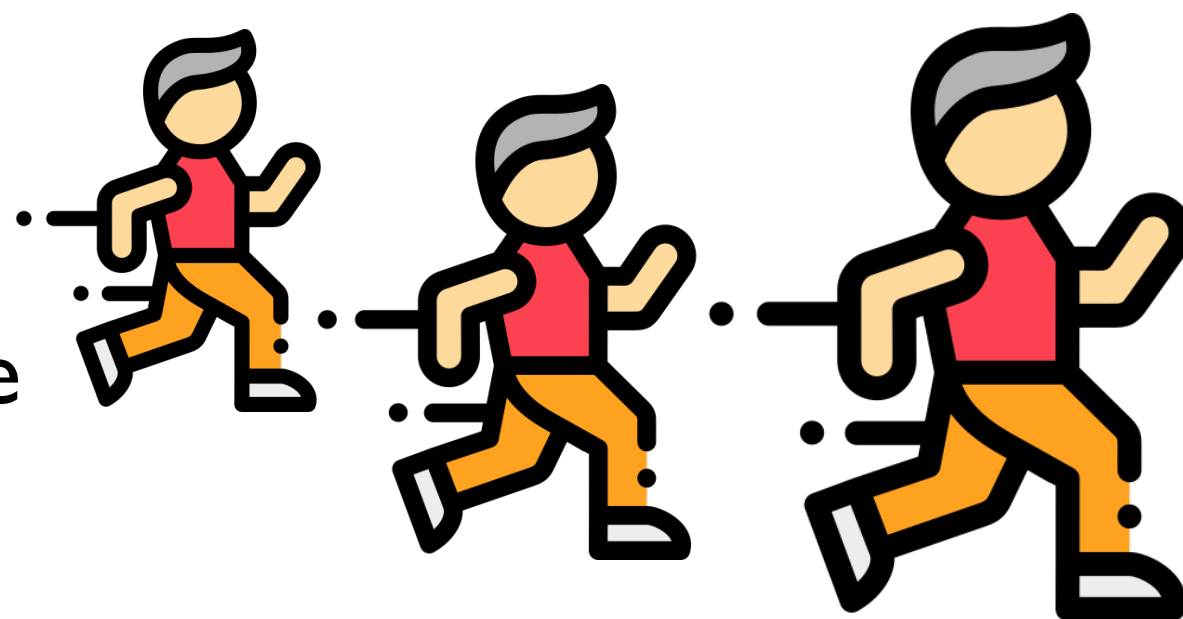
cascade
(cas-cade)

Word Class
(noun / verb)

Pronunciation / Syllables

Definition:

If you refer to a cascade of something, you mean that there is a large amount of it.



100's of children **cascaded** onto the field at lunchtime.

Phrases:

cascaded over

cascaded through

Synonym:

flood

deluge

Antonym:

Prefix / Suffix:

-s

-ed

Rhyme:

paid

shade

Link Word:

water

love



Shinobi Word of the Day

Word of the Day:

Pronunciation / Syllables

entire
(en-tire)

Word Class
(adjective)

Definition:

You use entire when you want to emphasize that you are referring to the whole of something, for example, the whole of a place, time, or population.



The **entire** school came together for a singing assembly.

Phrases:

complete and entire

entire, without exception

Synonym:

whole

total

Antonym:

partial

Prefix / Suffix:

-ty

-ly

Rhyme:

fire

retire

Link Word:

family

school



Shinobi Word of the Day

Word of the Day:

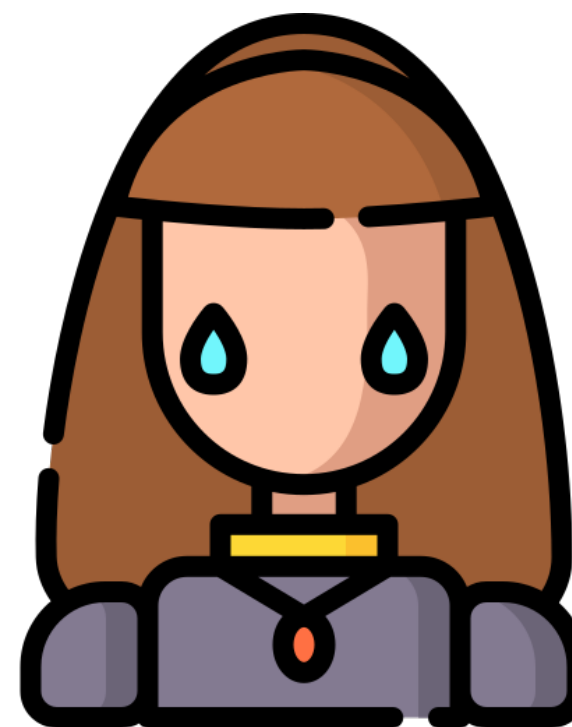
Pronunciation / Syllables

grieve
(grieve)

Word Class
(verb)

Definition:

If you grieve over something, especially someone's death, you feel very sad about it.



Everyone was **grieving** because the class fish had died.

Phrases:

was grieving for

full of grief

Synonym:

mourn

ache

Antonym:

rejoice

Prefix / Suffix:

-ed

agg-

Rhyme:

leave

receive

Link Word:

death

loss



Shinobi Word of the Day

Word of the Day:

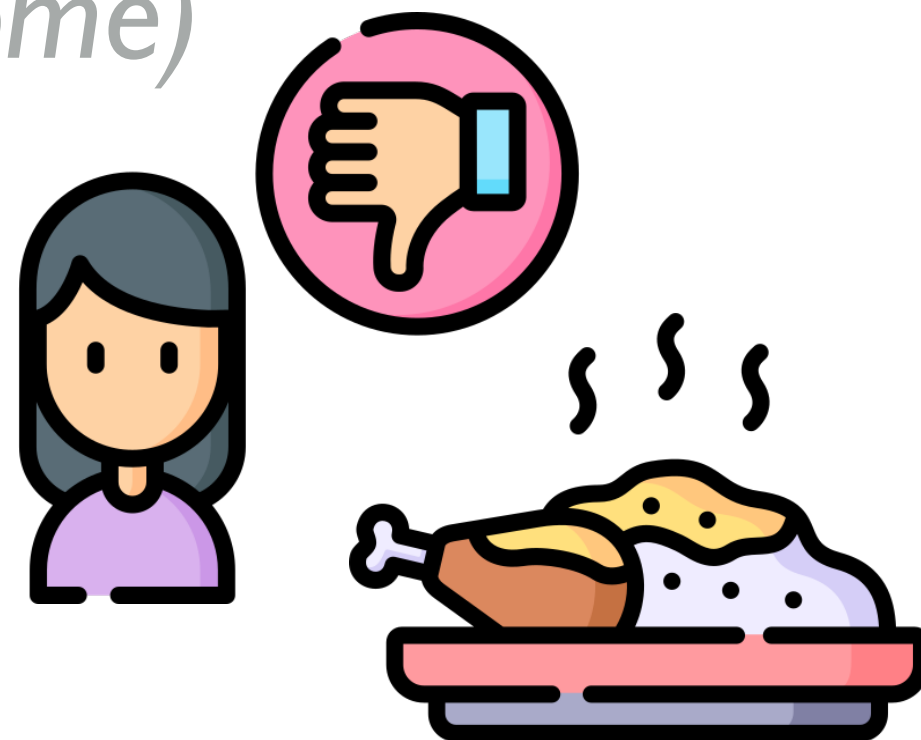
loathsome
(loath-some)

Word Class
(adjective)

Pronunciation / Syllables

Definition:

If you describe someone or something as loathsome, you are indicating how much you dislike them or how much they disgust you.



Mina thought the chicken curry was **loathsome**.

Phrases:

loathsome and vile

wicked and loathsome

Synonym:

detestable
revolting

Antonym:

delightful

Prefix / Suffix

-ness
-ly

Rhyme:

wholesome
lonesome

Link Word:

food
person

Vocabulary Laboratory



Describe / Definition:

Use it in a sentence:

Focus Word (write below):

Word Class:

Synonyms:

(words with same / similar meaning)

Antonyms:

(words with opposite meaning)

Draw your sentence:

Rhymes:

(words that sound the same)

Link Words:

(Example: football = pitch, team, player)

Vocabulary Visualiser

Draw the
Grasshopper words
and bring them to life.



Word: accept

Word: decline

Word: beneath

Word: sweaty



Vocabulary Visualiser

Draw the **Shinobi**
words and bring
them to life.



Word: amble

Word: cascade

Word: entire

Word: grieve



Matching Meanings

Draw lines from the **Grasshopper** words to their definitions.



Grasshopper Word

Grasshopper Definitions

accept

If you *** something or decline to do something, you politely refuse to accept it or do it.



decline

If someone *** about something that they have done or that they own, they talk about it very proudly, in a way that other people may find irritating or offensive.



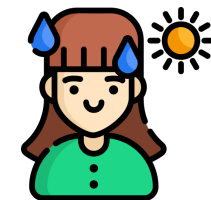
beneath

If you *** something that you have been offered, you say yes to it or agree to take it.



boast

If parts of your body or your clothes are ***, they are soaked or covered with sweat.



sweaty

Something that is *** another thing is under the other thing.



Matching Meanings

Draw lines from the **Shinobi** words to their definitions.



Shinobi Word

Shinobi Definitions

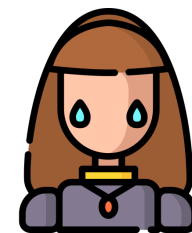
amble

If you refer to a *** of something, you mean that there is a large amount of it.



cascade

If you *** over something, especially someone's death, you feel very sad about it.



entire

When you ***, you walk slowly and in a relaxed manner.



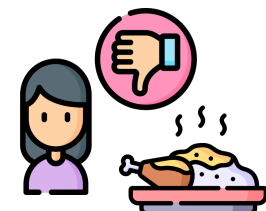
grieve

You use *** when you want to emphasize that you are referring to the whole of something, for example, the whole of a place, time, or population.



loathsome

If you describe someone or something as ***, you are indicating how much you dislike them or how much they disgust you.





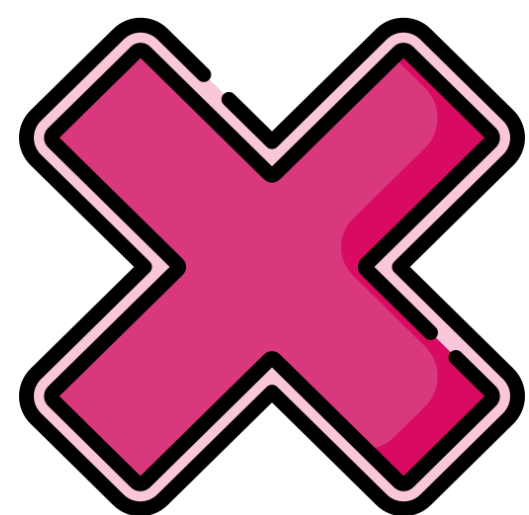
Display Slips

The following slides are for classroom display. As you teach each Word of the Day, words can be displayed in the classroom to enable pupils to use the taught vocabulary in an independent manner.





accept

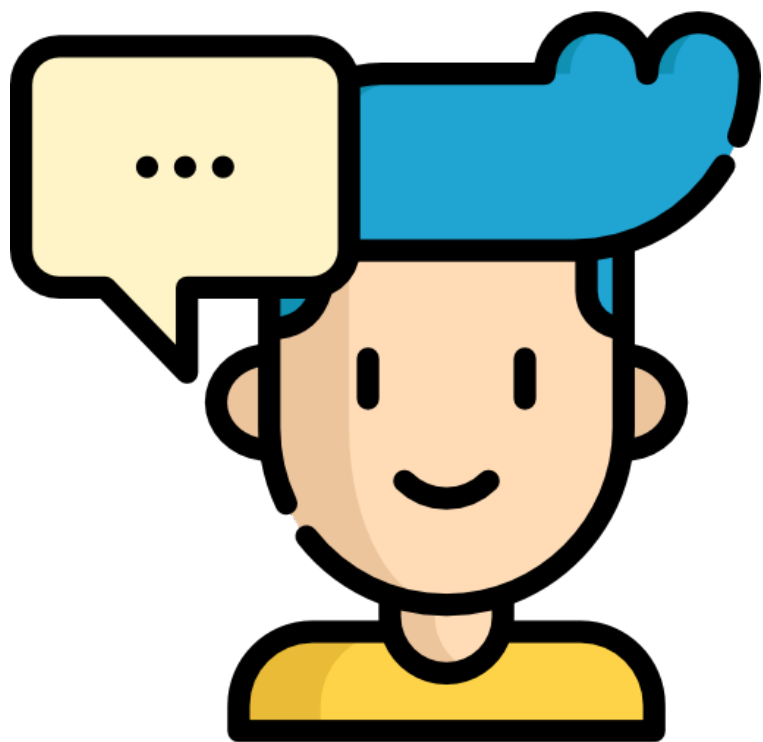


decline





beneath

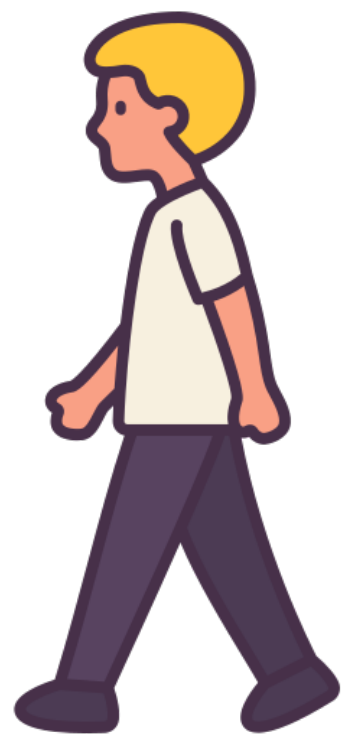
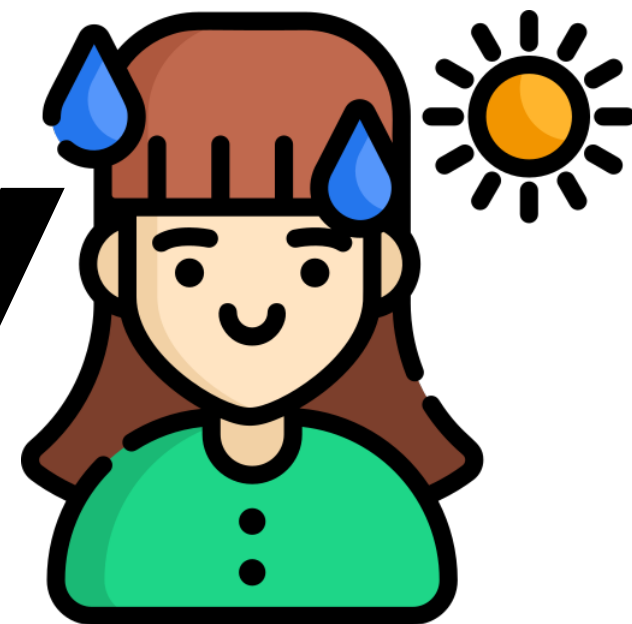


boast





sweaty



amble





cascade

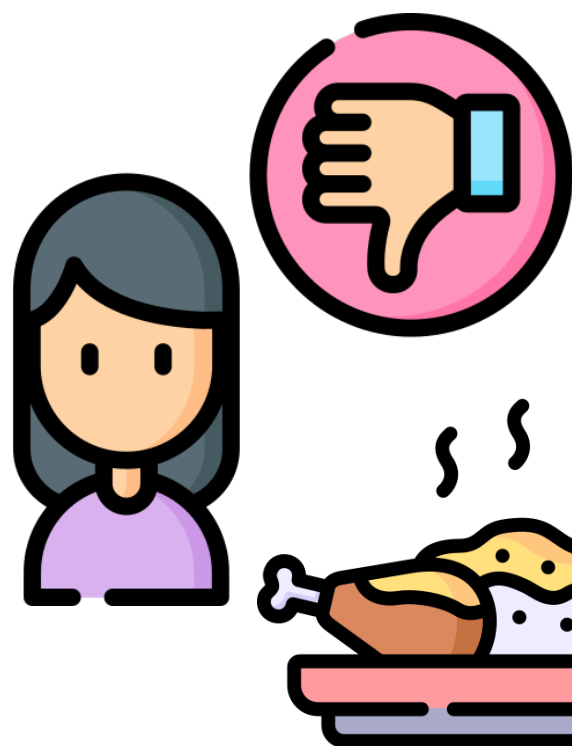
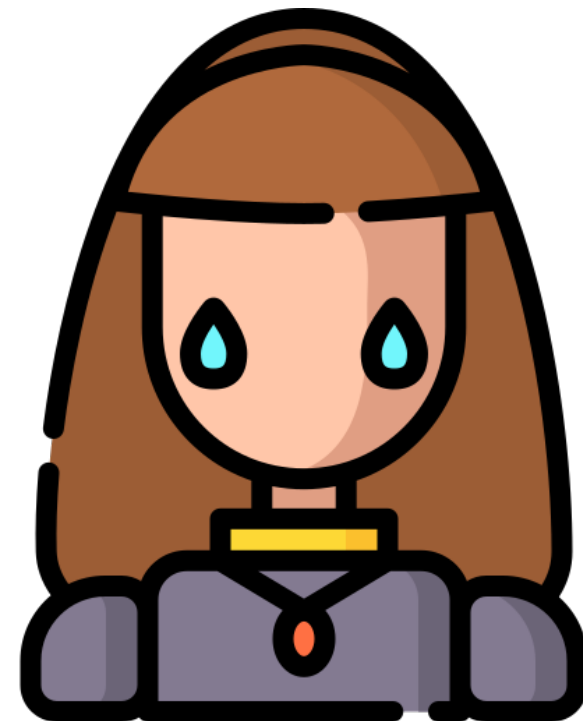


entire





grieve



loathsome

