

# Word of the Day

## Autumn Term 2021

Week 5 – 4th October 2021



### This Week's Words

**Grasshopper**

tear  
office  
spare  
chipped  
lift

**Shinobi**

tolerate  
mutter  
fixation

**VN**  
VOCABULARY NINJA

**Grasshopper Word of the Day**

**Word of the Day:** heart  
*(heart)*

**Word Class:** (noun)

**Definition:**  
Your heart is the organ in your chest that pumps the blood around your body. People also use heart to refer to the area of their chest that is closest to their heart.

**My heart was beating in my chest.**

**Rhyme:** heart was beating  
part  
start

**Link Word:** blood  
body

**Shinobi Word of the Day**

**Word of the Day:** calamitous  
*(ca-lam-i-tous)*

**Word Class:** (adjective)

**Definition:**  
If you describe an event or situation as calamitous, you mean it is very unfortunate or serious.

**The calamitous twins destroyed the play room.**

**Phrases:** the calamitous pair  
completely calamitous

**Synonym:** disastrous  
devastating

**Antonym:** good

**Prefix / Suffix:**

**Rhyme:** glamorous

**Link Word:** disaster  
bad

*'Words unlock the doors to a world of understanding...'*

# This Week's Words

## Grasshopper

**flush**

**press**

**point**

**select**

**flick**

## Shinobi

**acidic**

**condescending**

**graceful**

**tender**

**wicked**



**VOCABULARY NINJA**

# Grasshopper (Tier 1)

**flush**

**press**

**point**

**select**

**flick**



**VOCABULARY NINJA**

# **Shinobi (Tier 2)**

**acidic**

**condescending**

**graceful**

**tender**

**wicked**



**VOCABULARY NINJA**



# Grasshopper Word of the Day

Word of the Day:

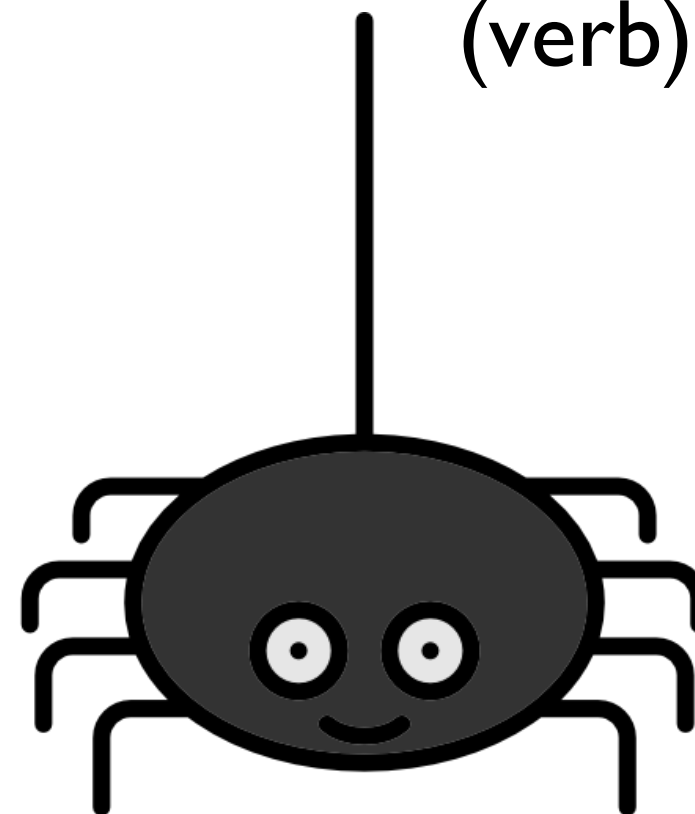
Pronunciation / Syllables

flush  
(flush)

Word Class  
(verb)

Definition:

If you flush something down the toilet, you get rid of it by putting it into the toilet bowl and flushing the toilet.



The spider was **flushed** down the drain by the rain.

Phrases:

quickly flush

flush suddenly

Synonym:

Antonym:

Rhyme:

Link Word:

rush

toilet

brush

spider



# Grasshopper Word of the Day

Word of the Day:

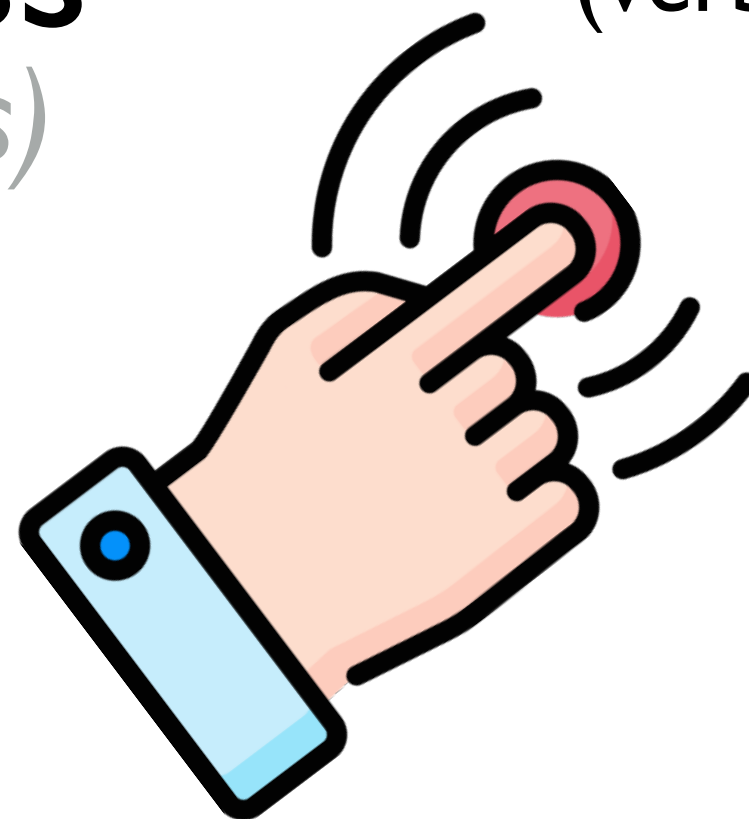
Pronunciation / Syllables

press  
(press)

Word Class  
(verb)

Definition:

If you press a button or switch, you push it with your finger in order to make a machine or device work.



She quickly **pressed** the button to answer the question.

Phrases:

pressed down the

press and push

Synonym:

lower

thrust

Antonym:

Rhyme:

less

yes

Link Word:

button

nerves



# Grasshopper Word of the Day

Word of the Day:

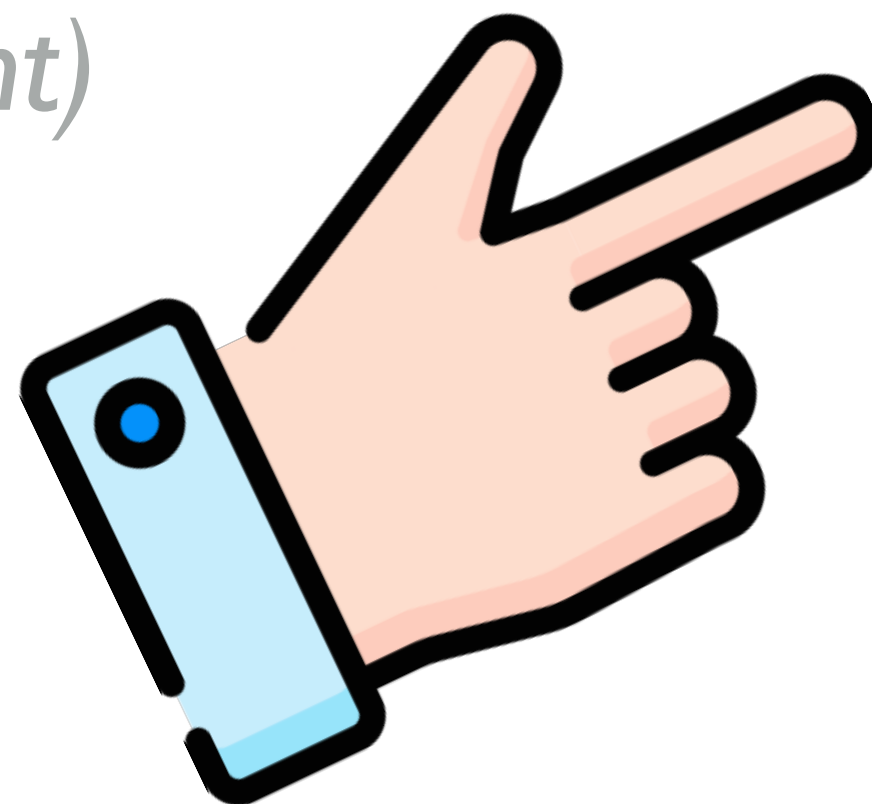
Pronunciation / Syllables

point  
(point)

Word Class  
(verb)

Definition:

If you point at a person or thing, you hold out your finger towards them in order to make someone notice them.



The teacher **pointed** to the display.

Phrases:

point towards

precisely pointed to

Synonym:

aim

direct

Antonym:

Rhyme:

joint

appoint

Link Word:

towards

at



# Grasshopper Word of the Day

Word of the Day:

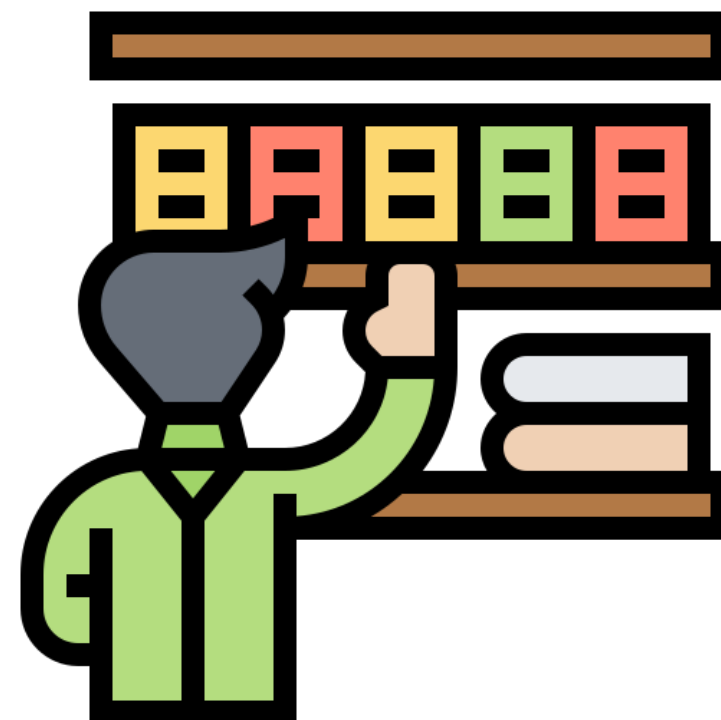
Pronunciation / Syllables

**select**  
(se-lect)

Word Class  
(verb)

Definition:

If you select something, you choose it from a number of things of the same kind.



Ramesh needed to **select** his new reading book.

Phrases:

carefully selected

select with thought

Synonym:

choose

pick

Antonym:

Rhyme:

effect

direct

Link Word:

books

drink





# Grasshopper Word of the Day

Word of the Day:

Pronunciation / Syllables

flick  
(flick)

Word Class  
(verb)

## Definition:

If you flick something away, or off something else, you remove it with a quick movement of your hand or finger.



Jimmy **flicked** the peas from his plate.

Phrases:

angrily flicked

flicked away

Synonym:

brush

snap

Antonym:

Rhyme:

thick

quick

Link Word:

food

finger



# Shinobi Word of the Day

Word of the Day:

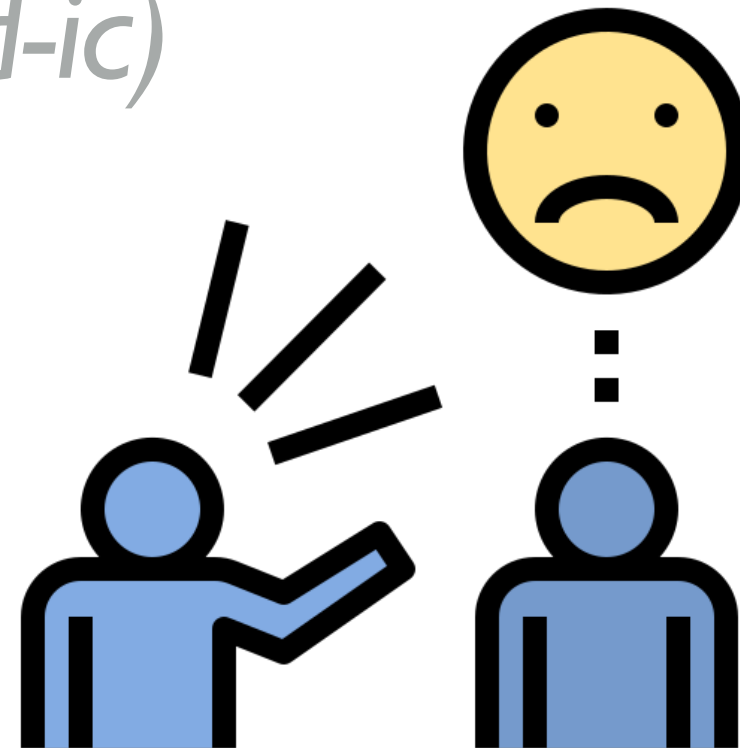
Pronunciation / Syllables

acidic  
(a-cid-ic)

Word Class  
(adjective)

Definition:

An acidic remark, or acidic humour, is very unkind or critical.



Her words were **acidic** and hurtful.

Phrases:

acidic words

acidic behaviour

Synonym:

burning

Antonym:

Prefix / Suffix:

non-

Rhyme:

Link Word:

comments  
personality



# Shinobi Word of the Day

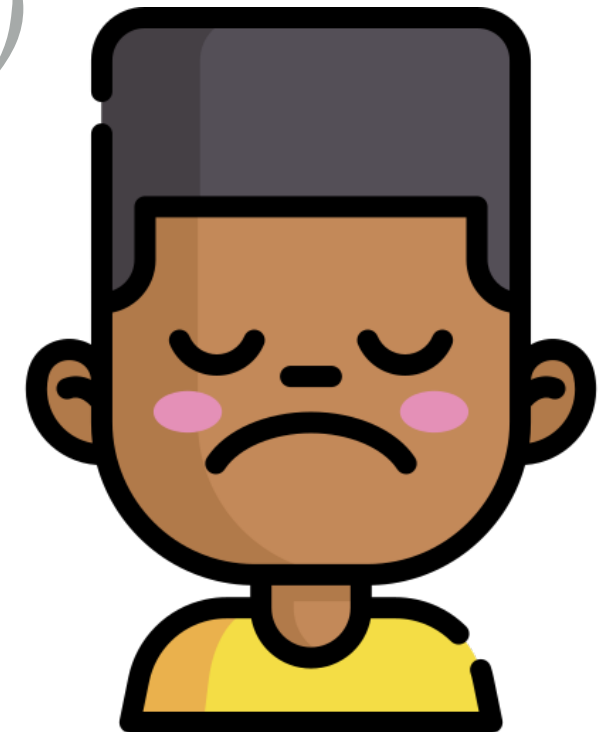
**Word of the Day:** **condescending**  
(con-de-scend-ing)

Word Class  
(adjective)

Pronunciation / Syllables

## Definition:

If you say that someone is condescending, you are showing your disapproval of the fact that they talk or behave in a way which shows that they think they are superior to other people.



Timothy was often **condescending** without realising.

## Phrases:

always condescending

condescending towards

## Synonym:

snobby

snooty

## Antonym:

respectful

## Prefix / Suffix:

-ly

-ed

## Rhyme:

depending

spending

## Link Word:

attitude

person



# Shinobi Word of the Day

Word of the Day:

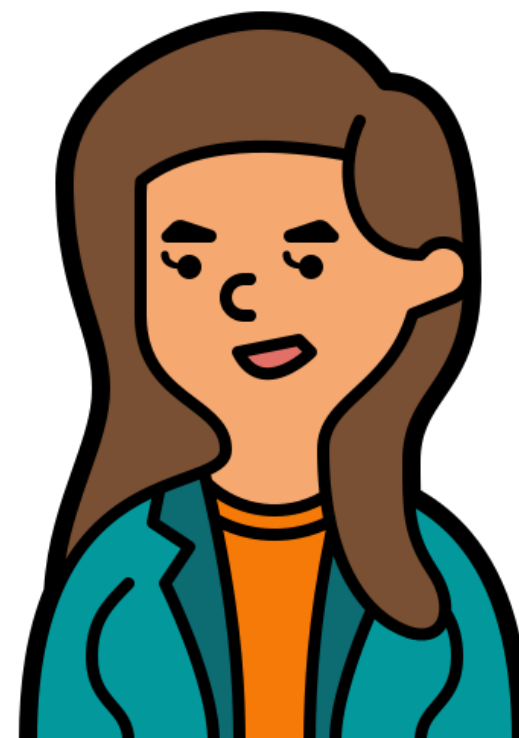
Pronunciation / Syllables

graceful  
(grace-ful)

Word Class  
(adjective)

## Definition:

Someone or something that is graceful moves in a smooth and controlled way which is attractive to watch.



Mrs Upham moved **gracefully** into the hall for assembly.

Phrases:

always graceful when

truly graceful

Synonym:

elegant

stylish

Antonym:

inelegant

stiff

Prefix / Suffix:

un-

-ly

Rhyme:

disgraceful

Link Word:

movement

walking



# Shinobi Word of the Day

Word of the Day:

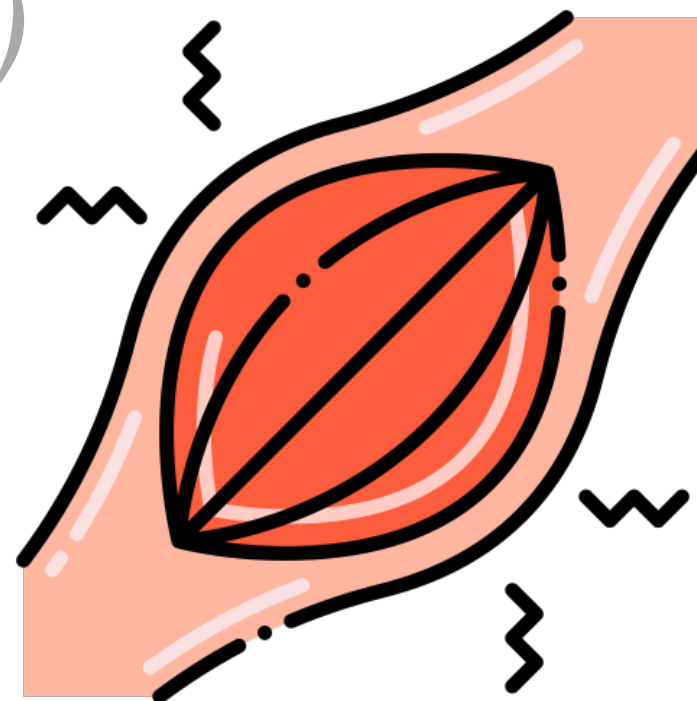
Pronunciation / Syllables

tender  
(ten-der)

Word Class  
(adjective)

Definition:

If part of your body is tender, it is sensitive and painful when it is touched.



Courtney's leg muscles were **tender** after the long run.

Phrases:

tender and aching

walked tenderly

Synonym:

sore

painful

Antonym:

Prefix / Suffix:

-ness

-ly

Rhyme:

surrender

slender

Link Word:

meat

feeling



# Shinobi Word of the Day

Word of the Day:

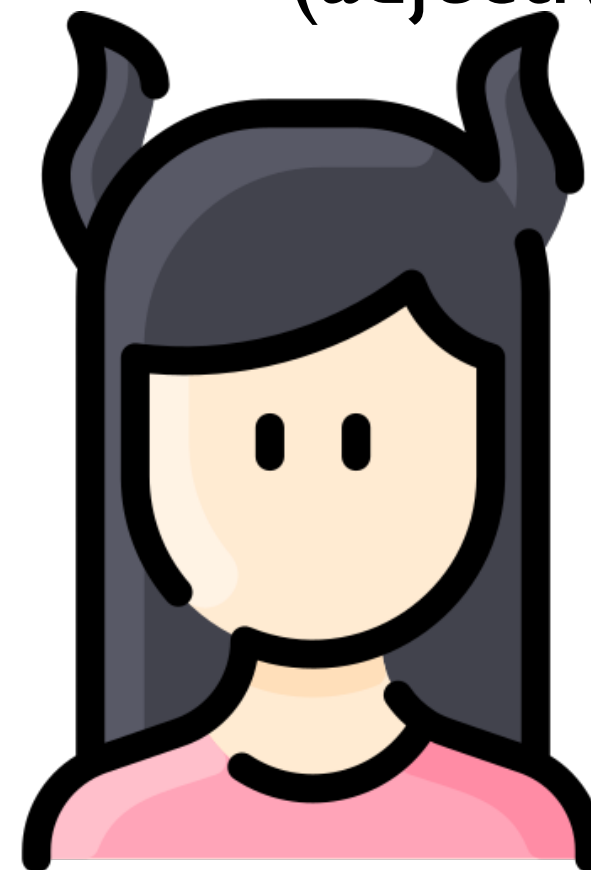
Pronunciation / Syllables

wicked  
(wick-ed)

Word Class  
(adjective)

## Definition:

You use wicked to describe someone or something that is very bad and deliberately harmful to people.



Jess liked to play **wicked** jokes on her friends.

Phrases:

vile and wicked

a wicked attitude

Synonym:

mischievous

cheeky

Antonym:

Prefix / Suffix

-ness

-ly

Rhyme:

Link Word:

actions

humour

# Vocabulary Laboratory



Describe / Definition:

Use it in a sentence:

Focus Word (write below):

Word Class:

**Synonyms:**

(words with same / similar meaning)

**Antonyms:**

(words with opposite meaning)

**Draw your sentence:**

**Rhymes:**

(words that sound the same)

**Link Words:**

(Example: football = pitch, team, player)

# Vocabulary Visualiser

Draw the  
**Grasshopper** words  
and bring them to life.



Word: flush

Word: press

Word: point

Word: select





# Vocabulary Visualiser

Draw the **Shinobi**  
words and bring  
them to life.



Word: amble

Word: cascade

Word: entire

Word: grieve



# Matching Meanings

Draw lines from the **Grasshopper** words to their definitions.



## Grasshopper Word

## Grasshopper Definitions

flush

If you \*\*\* at a person or thing, you hold out your finger towards them in order to make someone notice them.



press

If you \*\*\* something away, or off something else, you remove it with a quick movement of your hand or finger.



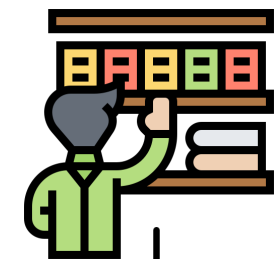
point

If you \*\*\* a button or switch, you push it with your finger in order to make a machine or device work.



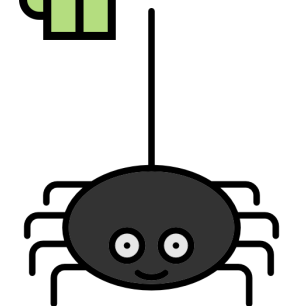
select

If you \*\*\* something, you choose it from a number of things of the same kind.



flick

If you \*\*\* something down the toilet, you get rid of it by putting it into the toilet bowl and \*\*\* the toilet.



# Matching Meanings

Draw lines from the **Shinobi** words to their definitions.

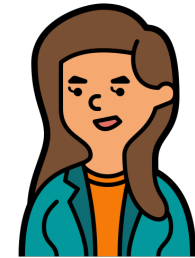


## Shinobi Word

## Shinobi Definitions

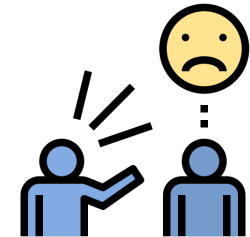
acidic

Someone or something that is \*\*\* moves in a smooth and controlled way which is attractive to watch.



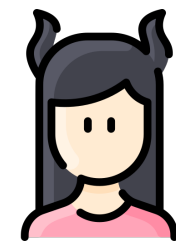
condescending

An \*\*\* remark, or \*\*\* humour, is very unkind or critical.



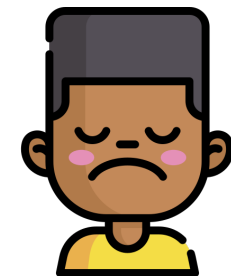
graceful

You use \*\*\* to describe someone or something that is very bad and deliberately harmful to people.



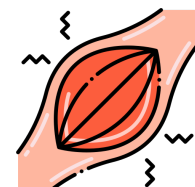
tender

If you say that someone is \*\*\*, you are showing your disapproval of the fact that they talk or behave in a way which shows that they think they are superior to other people.



wicked

If part of your body is \*\*\*, it is sensitive and painful when it is touched.





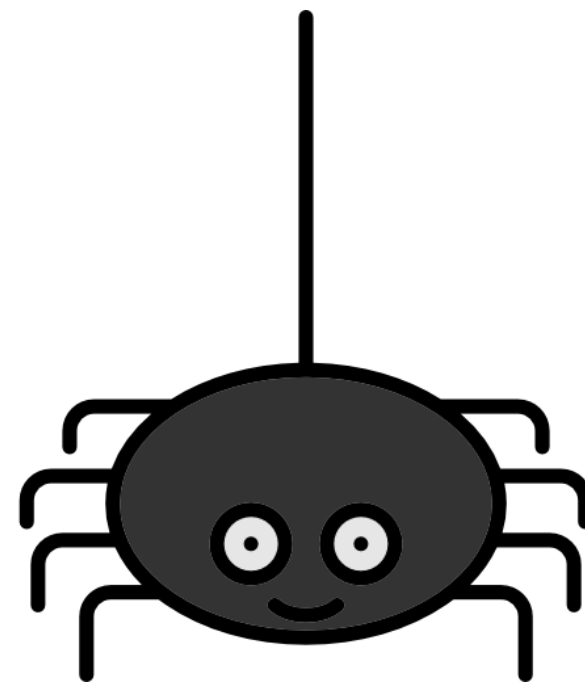
# Display Slips

The following slides are for classroom display. As you teach each Word of the Day, words can be displayed in the classroom to enable pupils to use the taught vocabulary in an independent manner.





# flush

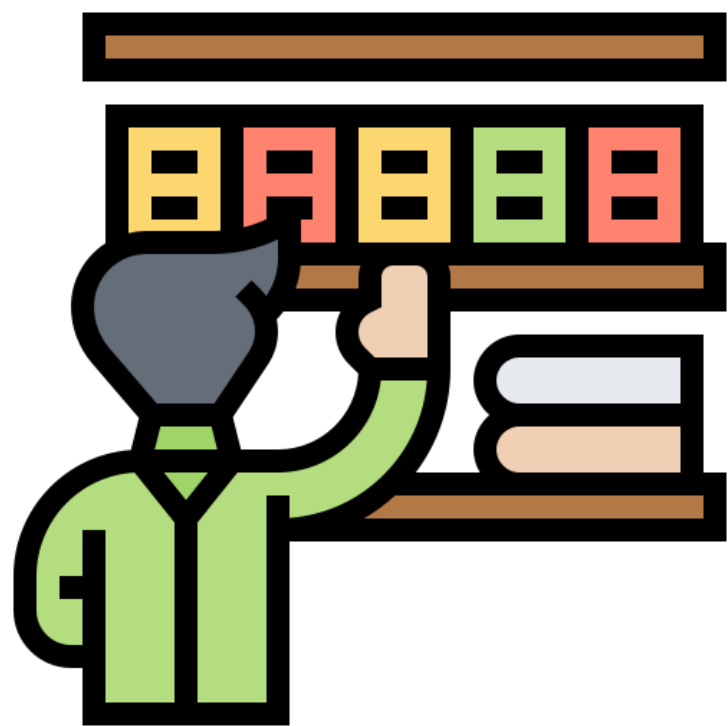


# press





# point

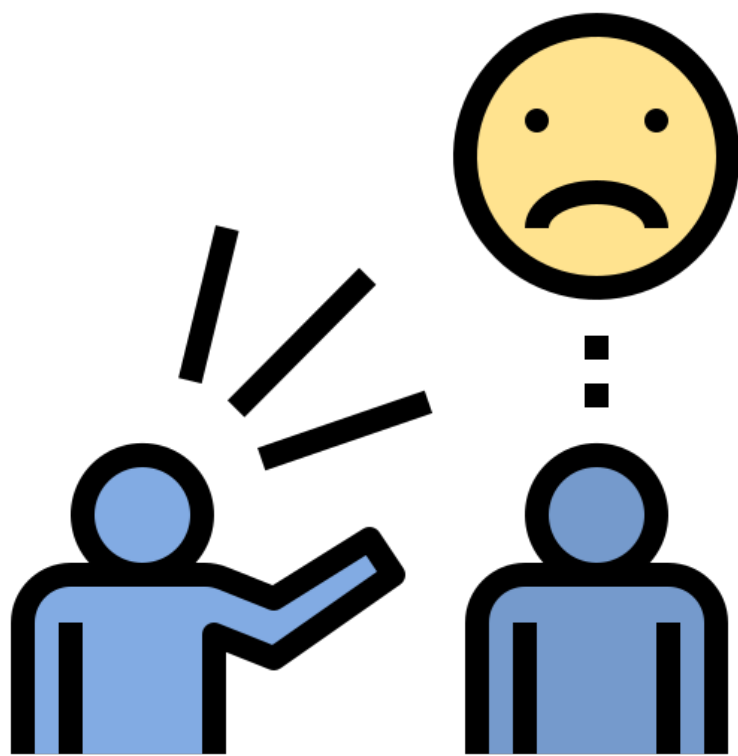


# select





# flick

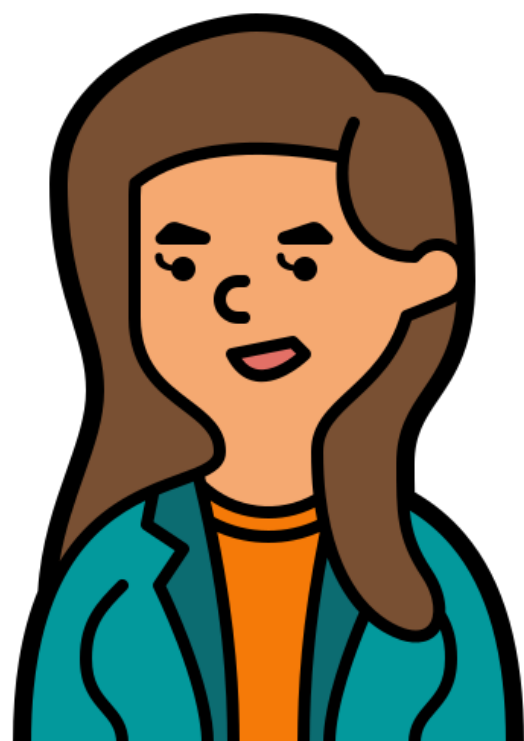
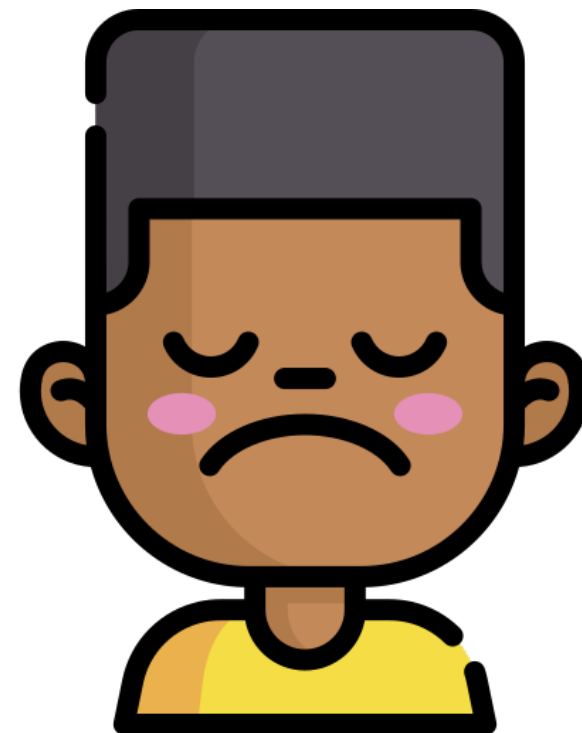


# acidic





condescending



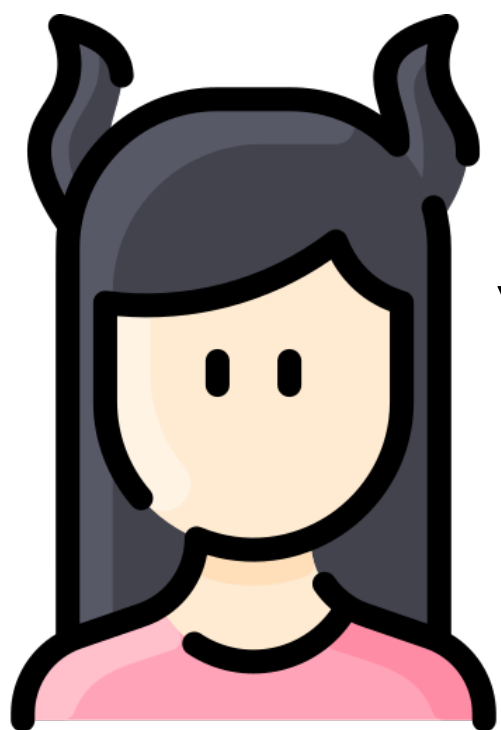
graceful







# tender



# wicked

