

Word of the Day

Summer Term 2021

Week 39 – 5th July 2021



This Week's Words

Grasshopper

tear
office
spare
chipped
lift

Shinobi

tolerate
mutter
fixation

VN
VOCABULARY NINJA

Grasshopper Word of the Day

Word of the Day: heart
(heart)

Word Class: (noun)

Definition:
Your heart is the organ in your chest that pumps the blood around your body. People also use heart to refer to the area of their chest that is closest to their heart.

My heart was beating in my chest.

Rhyme: heart was beating
part
start

Link Word: blood
body

Shinobi Word of the Day

Word of the Day: calamitous
(ca-lam-i-tous)

Word Class: (adjective)

Definition:
If you describe an event or situation as calamitous, you mean it is very unfortunate or serious.

The calamitous twins destroyed the play room.

Phrases: the calamitous pair
completely calamitous

Synonym: disastrous
devastating

Antonym: good

Prefix / Suffix:

Rhyme: glamorous

Link Word: disaster
bad

'Words unlock the doors to a world of understanding...'

This Week's Words

Grasshopper

law

body

circus

prison

hotel

Shinobi

ambiguous

varied

bisect

export

surreptitious



VOCABULARY NINJA

Grasshopper (Tier 1)

law

body

circus

prison

hotel



VOCABULARY NINJA

Shinobi (Tier 2)

ambiguous

varied

bisect

export

surreptitious



VOCABULARY NINJA



Grasshopper Word of the Day

Word of the Day:

Pronunciation / Syllables

law
(law)

Word Class
(noun)

Definition:

The law is a system of rules that a society or government develops in order to deal with crime, business agreements, and social relationships.



The **law** was there to keep people safe.

Phrases:

the law of the land

must abide the law

Synonym:

rule

Antonym:

Rhyme:

floor
shore

Link Word:

rules
court



Grasshopper Word of the Day

Word of the Day:

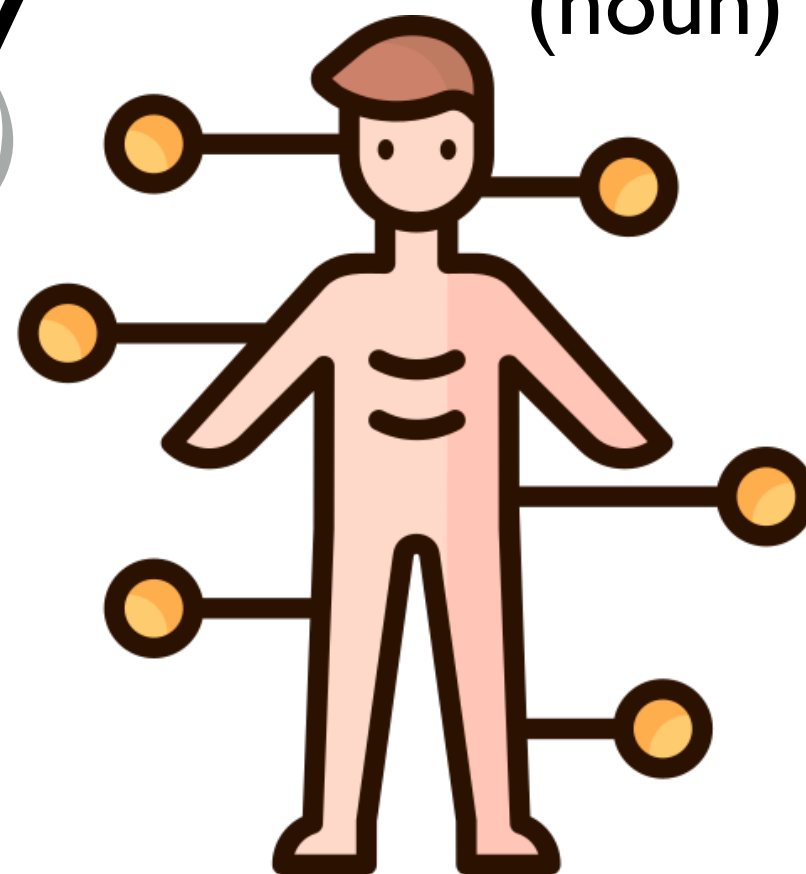
Pronunciation / Syllables

body
(bod-y)

Word Class
(noun)

Definition:

Your body is all your physical parts, including your head, arms, and legs.



Your **body** is very special and needs looking after.

Phrases:

my broken body

the human body

Synonym:

anatomy

shape

Antonym:

Rhyme:

shoddy

Link Word:

arm

leg



Grasshopper Word of the Day

Word of the Day:

Pronunciation / Syllables

circus
(*cir-cus*)

Word Class
(noun)

Definition:

A circus is a group that consists of clowns, acrobats, and animals which travels around to different places and performs shows.



Class five took a trip to the **circus**.

Phrases:

entertaining circus

it was a complete circus

Synonym:

Antonym:

Rhyme:

Link Word:

purpose

clown

acrobat



Grasshopper Word of the Day

Word of the Day:

Pronunciation / Syllables

prison
(pris-on)

Word Class
(noun)

Definition:

A prison is a building where criminals are kept as punishment or where people accused of a crime are kept before their trial.



They broke the law, so they had to go to **prison**.

Phrases:

sent to prison for

spent time in prison

Synonym:

jail

slammer

Antonym:

Rhyme:

imprison

risen

Link Word:

crime

trial



Grasshopper Word of the Day

Word of the Day:

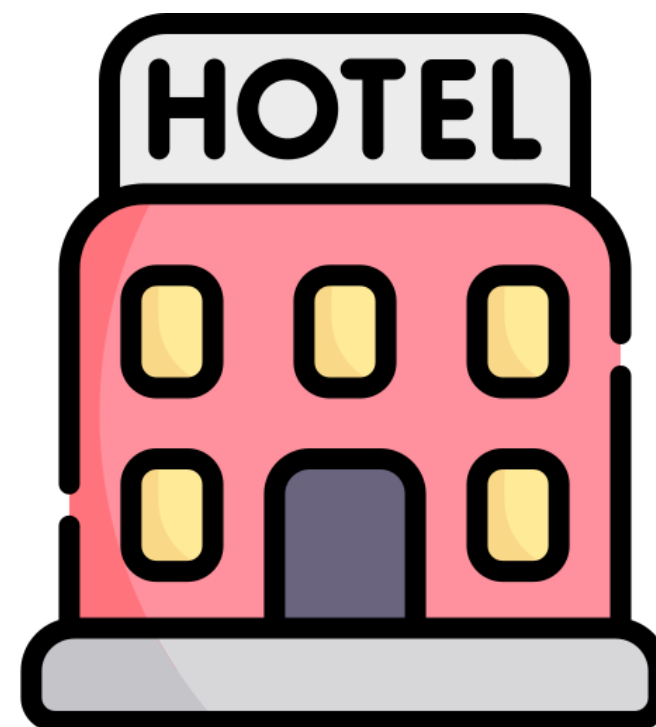
Pronunciation / Syllables

hotel
(ho-tel)

Word Class
(noun)

Definition:

A hotel is a building where people stay, for example on holiday, paying for their rooms and meals.



To **hotel** was full and had no rooms.

Phrases:

disgusting hotel

delightful hotel

Synonym:

inn

lodge

Antonym:

Rhyme:

fell

tell

Link Word:

holiday

travel



Shinobi Word of the Day

Word of the Day:

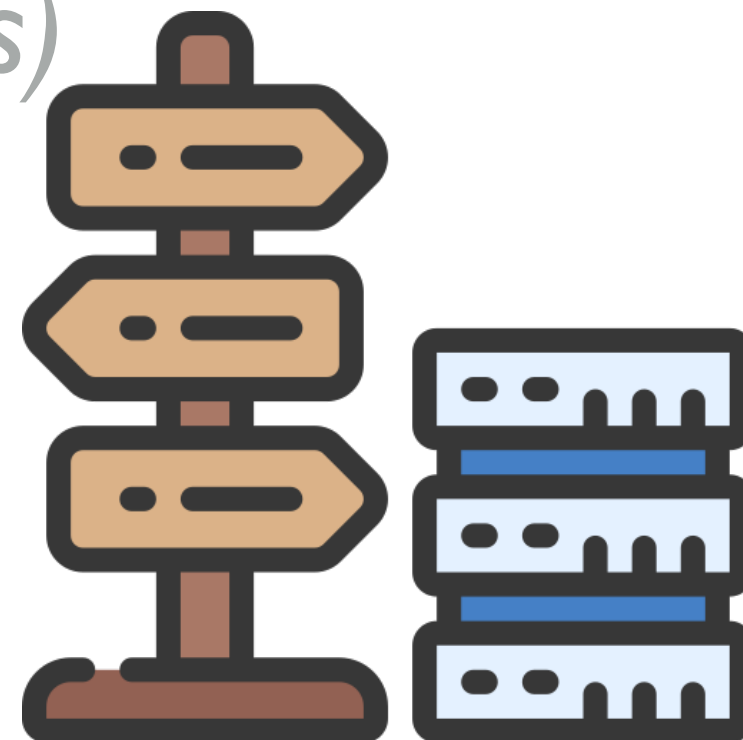
ambiguous
(*am-bi-u-ous*)

Word Class
(adjective)

Pronunciation / Syllables

Definition:

If you describe something as ambiguous, you mean that it is unclear or confusing because it can be understood in more than one way.



The directions were **ambiguous**.

Phrases:

ambiguous thoughts about

very ambiguous

Synonym:

unclear

vague

Antonym:

clear

unambiguous

Prefix / Suffix:

un-

-ly

Rhyme:

continuous

Link Word:

directions

instructions



Shinobi Word of the Day

Word of the Day:

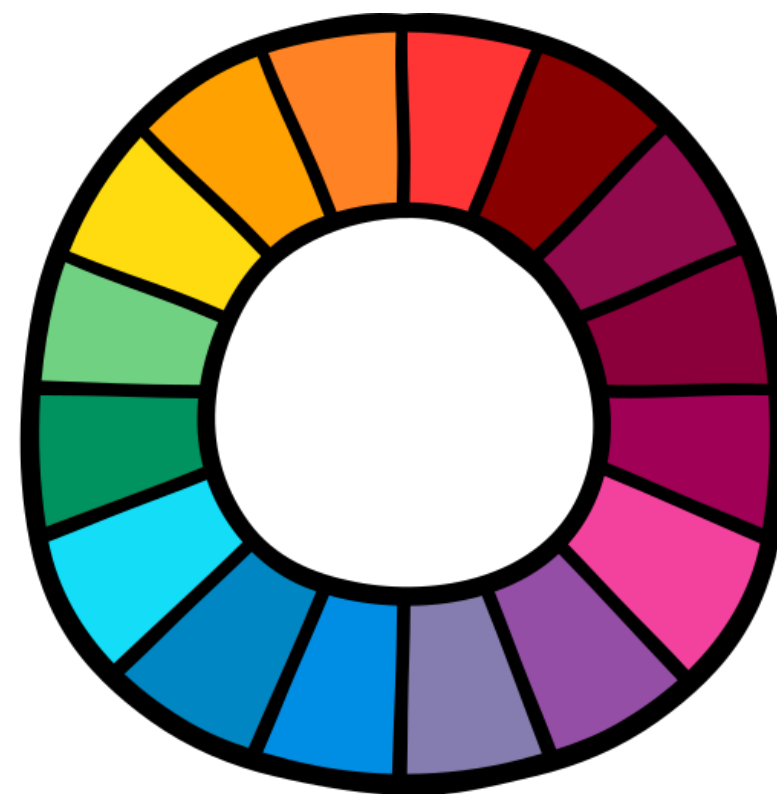
Pronunciation / Syllables

varied
(*var-ied*)

Word Class
(adjective)

Definition:

Something that is varied consists of things of different types, sizes, or qualities.



The colours in Jen's picture were **varied**.

Phrases:

varied opinions

varied designs

Synonym:

diverse
assorted

Antonym:

uniform

Prefix / Suffix:

-able
un-

Rhyme:

married
carried

Link Word:

colour
opinion



Shinobi Word of the Day

Word of the Day:

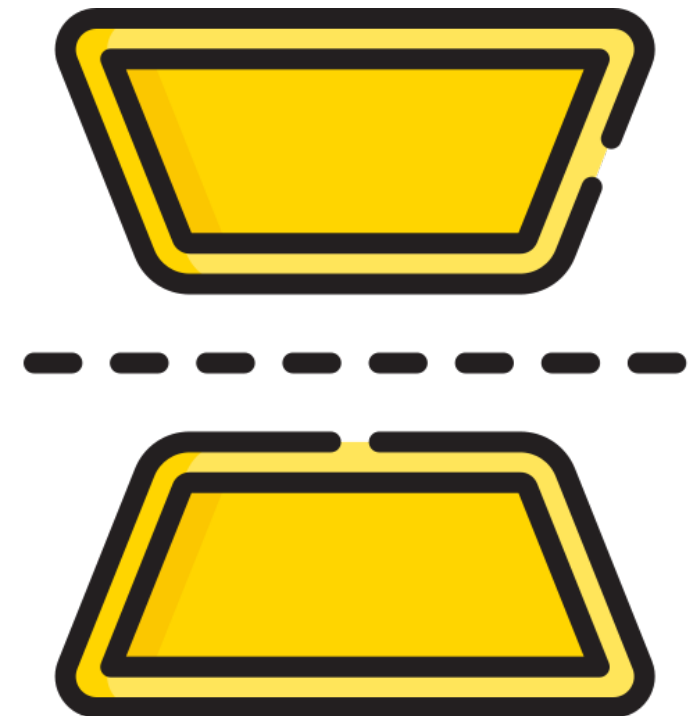
Pronunciation / Syllables

bisect
(*bi-sect*)

Word Class
(verb)

Definition:

If something long and thin
bisects an area or line, it
divides the area or line in half.



The line **bisected** the two shapes.

Phrases:

bisected the crowd

bisected the trees

Synonym:

halve

Antonym:

Prefix / Suffix:

-ing

-tion

Rhyme:

effect

subject

Link Word:

insect

crowd



Shinobi Word of the Day

Word of the Day:

Pronunciation / Syllables

export
(ex-port)

Word Class
(verb)

Definition:

To export products or raw materials means to sell them to another country.



Mr Robson needed to **export** the documents.

Phrases:

safely export

export cheaply

Synonym:

transport

Antonym:

import

Prefix / Suffix:

-ed

-er

Rhyme:

retort

escort

Link Word:

goods

parcel



Shinobi Word of the Day

Word Class

Word of the Day: **surreptitious** (adjective)

Pronunciation / Syllables

(*sur-rep-ti-tious*)

Definition:

A surreptitious action is done secretly.



Jo **surreptitiously** handed Alex a note.

Phrases:

surreptitious actions

surreptitiously gave

Synonym:

sneaky

secret

Antonym:

blatant

open

Prefix / Suffix

-ly

Rhyme:

terrific

prolific

Link Word:

secret

spy

Vocabulary Laboratory



Describe / Definition:

Use it in a sentence:

Focus Word (write below):

Word Class:

Synonyms:

(words with same / similar meaning)

Antonyms:

(words with opposite meaning)

Draw your sentence:

Rhymes:

(words that sound the same)

Link Words:

(Example: football = pitch, team, player)

Vocabulary Visualiser

Draw the
Grasshopper words
and bring them to life.



Word: law

Word: body

Word: prison

Word: hotel



Vocabulary Visualiser

Draw the **Shinobi**
words and bring
them to life.



Word: ambiguous

Word: varied

Word: bisect

Word: export



Matching Meanings

Draw lines from the **Grasshopper** words to their definitions.



Grasshopper Word

law

body

circus

prison

hotel

Grasshopper Definitions

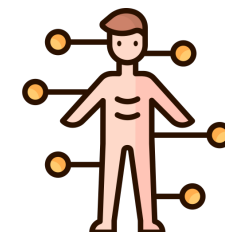
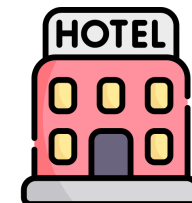
A *** is a group that consists of clowns, acrobats, and animals which travels around to different places and performs shows.

The *** is a system of rules that a society or government develops in order to deal with crime, business agreements, and social relationships.

A *** is a building where people stay, for example on holiday, paying for their rooms and meals.

A *** is a building where criminals are kept as punishment or where people accused of a crime are kept before their trial.

Your *** is all your physical parts, including your head, arms, and legs.



Matching Meanings

Draw lines from the
Shinobi words to
their definitions.



Shinobi Word

Shinobi Definitions

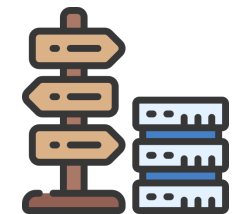
ambiguous

Something that is *** consists of things of different types, sizes, or qualities.



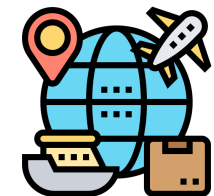
varied

If you describe something as ***, you mean that it is unclear or confusing because it can be understood in more than one way.



bisect

To *** products or raw materials means to sell them to another country.



export

A *** action is done secretly.



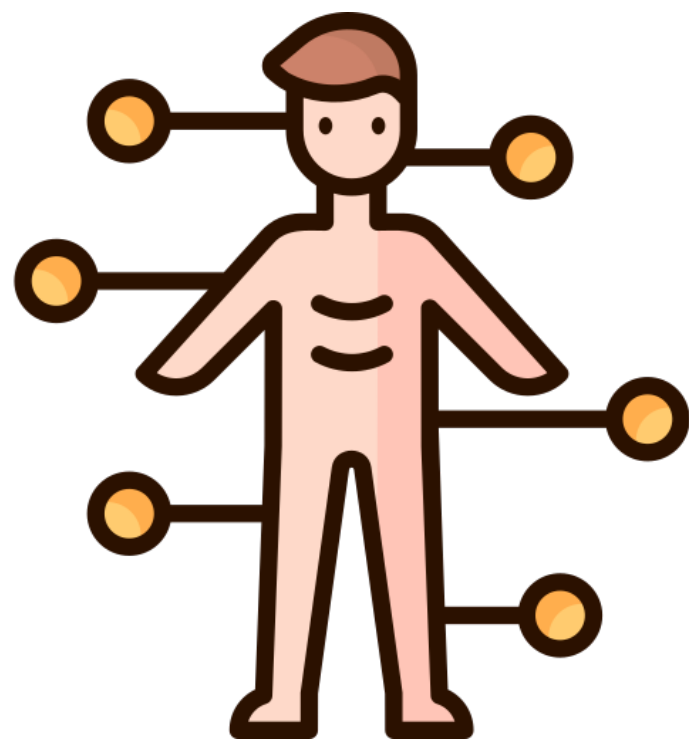
surreptitious

If something long and thin *** an area or line, it divides the area or line in half.





law



body





circus

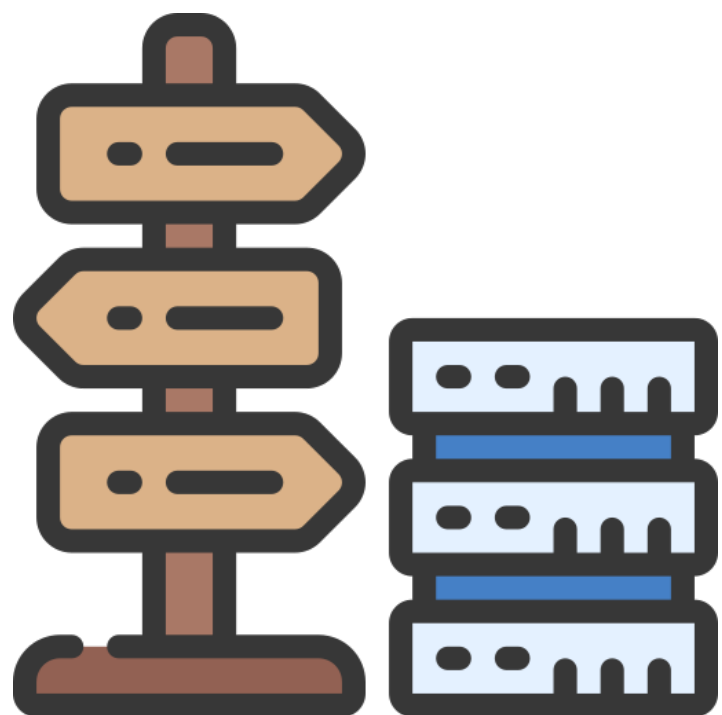
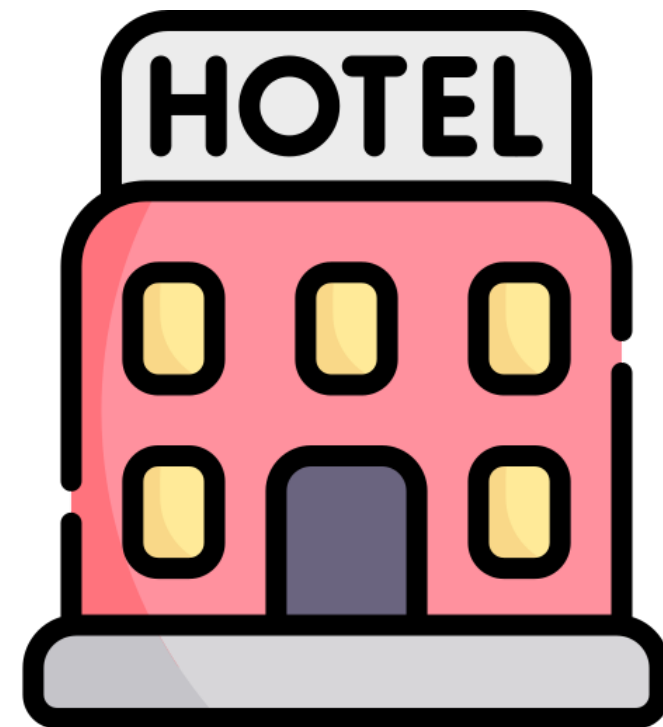


prison





hotel

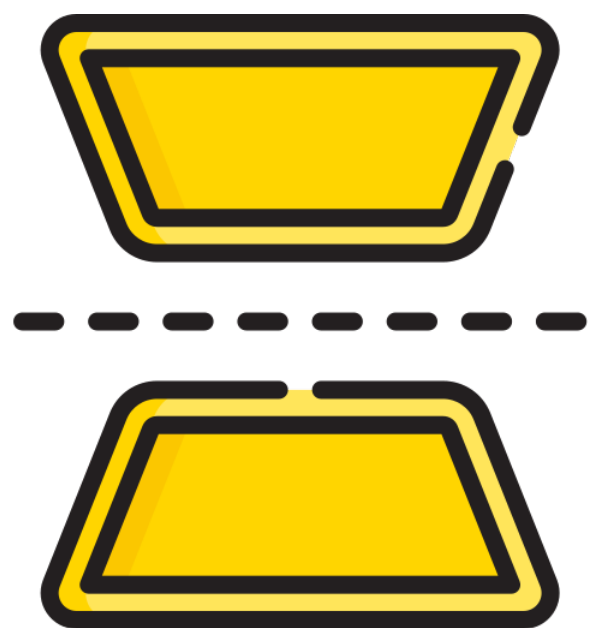


ambiguous





varied



bisect





export



surreptitious

