

Word of the Day

Summer Term 2021

Week 32 – 10th May 2021



This Week's Words

Grasshopper

tear
office
spare
chipped
lift

Shinobi

tolerate
mutter
fixation

VN
VOCABULARY NINJA

Grasshopper Word of the Day

Word of the Day: heart
Word Class: (noun)

Definition:
Your heart is the organ in your chest that pumps the blood around your body. People also use heart to refer to the area of their chest that is closest to their heart.

My heart was beating in my chest.

Rhyme: heart was beating
part
start

Link Word: blood
body

Shinobi Word of the Day

Word of the Day: calamitous
Word Class: (adjective)

Definition:
If you describe an event or situation as calamitous, you mean it is very unfortunate or serious.

The calamitous twins destroyed the play room.

Phrases: the calamitous pair
completely calamitous

Synonym: disastrous
devastating

Antonym: good

Prefix / Suffix:

Rhyme: glamorous

Link Word: disaster
bad

'Words unlock the doors to a world of understanding...'

This Week's Words

Grasshopper

dozen

duo

fortnight

talent

suitcase

Shinobi

appetite

unfamiliar

divert

mimic

convenient



VOCABULARY NINJA

Grasshopper (Tier 1)

dozen

duo

fortnight

talent

suitcase



VOCABULARY NINJA

Shinobi (Tier 2)

appetite

unfamiliar

divert

mimic

convenient



VOCABULARY NINJA



Grasshopper Word of the Day

Word of the Day:

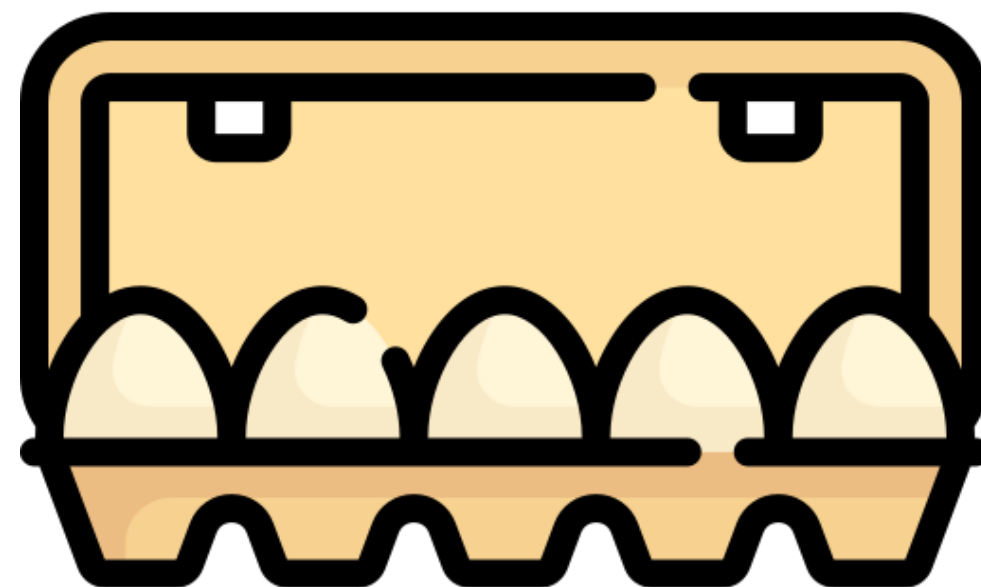
Pronunciation / Syllables

dozen
(*doz-en*)

Word Class
(noun)

Definition:

If you have a dozen things,
you have twelve of them.



The children used a **dozen** eggs to create a cake.

Phrases:

a dozen birds

a dozen cakes

Synonym:

twelve

Antonym:

Rhyme:

cousin

Link Word:

eggs

people



Grasshopper Word of the Day

Word of the Day:

Pronunciation / Syllables

duo
(*duo*)

Word Class
(noun)

Definition:

You can refer to two people together as a duo, especially when they have something in common.



The brave **duo** explored the caves.

Phrases:

the intrepid duo

the deadly duo

Synonym:

pair

two

Antonym:

Rhyme:

owe

Link Word:

children

team



Grasshopper Word of the Day

Word of the Day:

fortnight
(*fort-night*)

Word Class
(noun)

Pronunciation / Syllables

Definition:

A fortnight is a period of two weeks.



Jenn was going to her caravan for a **fortnight**.

Phrases:

a fortnight abroad

a fortnight until

Synonym:

Antonym:

Rhyme:

Link Word:

fourteen

holiday

two weeks

weeks



Grasshopper Word of the Day

Word of the Day:

Pronunciation / Syllables

talent
(tal-ent)

Word Class
(noun)

Definition:

Talent is the natural ability to do something well.



Everyone was excited for the **talent** show.

Phrases:

an extreme talent

was talented

Synonym:

ability

knack

Antonym:

Rhyme:

gallant

balance

Link Word:

sport

famous



Grasshopper Word of the Day

Word of the Day:

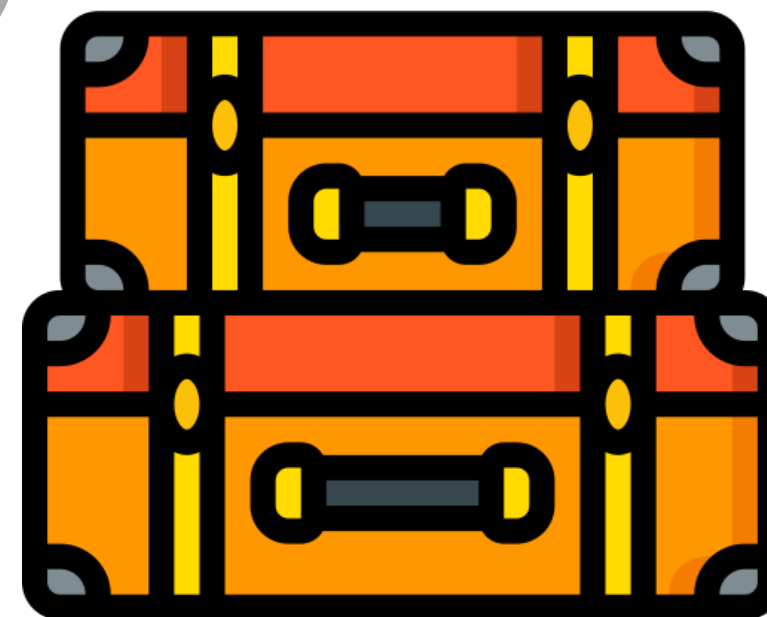
suitcase
(*suit-case*)

Word Class
(noun)

Pronunciation / Syllables

Definition:

A suitcase is a box or bag with a handle and a hard frame in which you carry your clothes when you are travelling.



Juan packed his clothes into a **suitcase** for his holiday.

Phrases:

a strong suitcase

packed the suitcase

Synonym:

case

holdall

Antonym:

Rhyme:

trace

lace

Link Word:

travel

transport



Shinobi Word of the Day

Word of the Day:

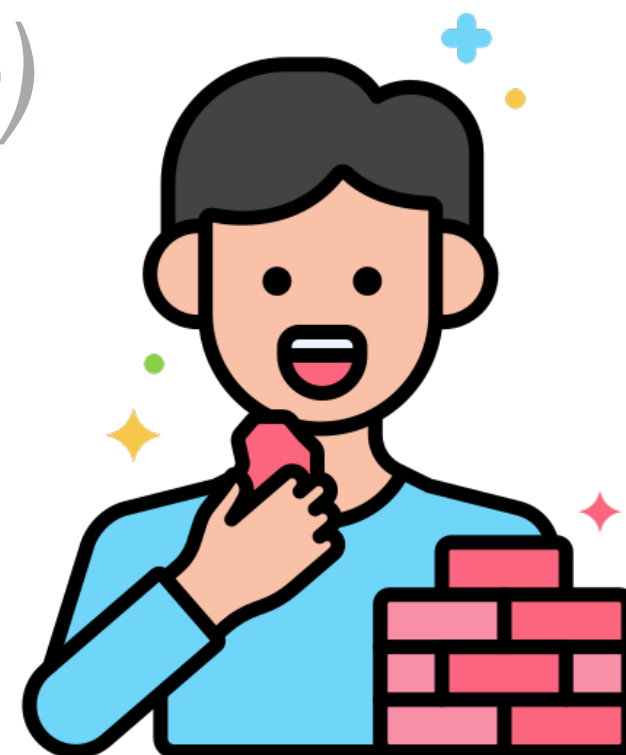
Pronunciation / Syllables

appetite
(ap-pe-tite)

Word Class
(noun)

Definition:

Your appetite is your desire to eat.
Someone's appetite for something is their strong desire for it.



Class 9 has an **appetite** for learning.

Phrases:

has a huge appetite

appetite had dwindled

Synonym:

hunger

craving

Antonym:

aversion

Prefix / Suffix:

-s

Rhyme:

write

Link Word:

food

learning



Shinobi Word of the Day

Word of the Day: **unfamiliar**

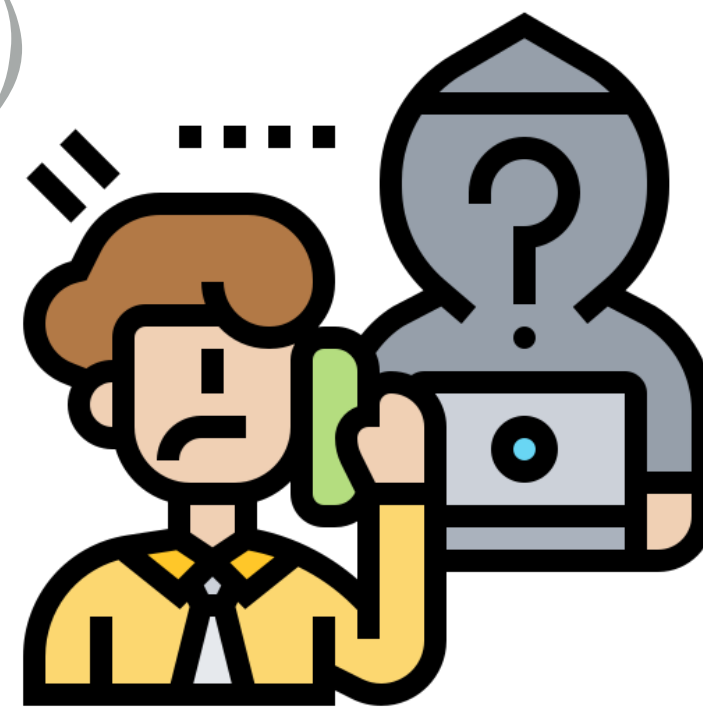
Word Class
(adjective)

Pronunciation / Syllables

(un-fa-mil-iar)

Definition:

If something is unfamiliar to you, you know nothing or very little about it, because you have not seen or experienced it before.



Sheena was **unfamiliar** with the email address.

Phrases:

new and unfamiliar

rather unfamiliar

Synonym:

unknown
strange

Antonym:

familiar

Prefix / Suffix:

Rhyme:

Link Word:

internet
stranger



Shinobi Word of the Day

Word of the Day:

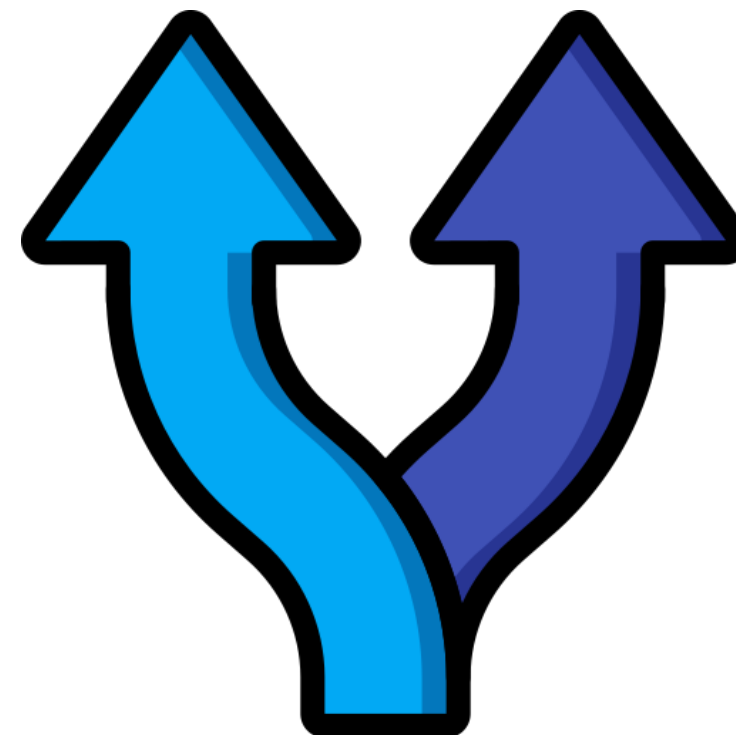
Pronunciation / Syllables

divert
(di-vert)

Word Class
(verb)

Definition:

To divert, is to make someone or something go via or be drawn to something that wasn't originally intended.



The dog on the playground was **diverted** out of the gate.

Phrases:

needed to divert

they were diverted

Synonym:

channel

avert

Antonym:

Prefix / Suffix:

-ion

-ing

Rhyme:

hurt

alert

Link Word:

traffic

attention



Shinobi Word of the Day

Word of the Day:

Pronunciation / Syllables

mimic
(*mim-ic*)

Word Class
(verb)

Definition:

If you mimic the actions or voice of a person or animal, you imitate them, usually in a way that is meant to be amusing or entertaining.



Fred liked to **mimic** his teacher's sayings.

Phrases:

loved to mimic

mimic exactly

Synonym:

imitate

copy

Antonym:

Prefix / Suffix:

-ist

-ism

Rhyme:

gimmick

Link Word:

behaviour

words



Shinobi Word of the Day

Word of the Day: **convenient**

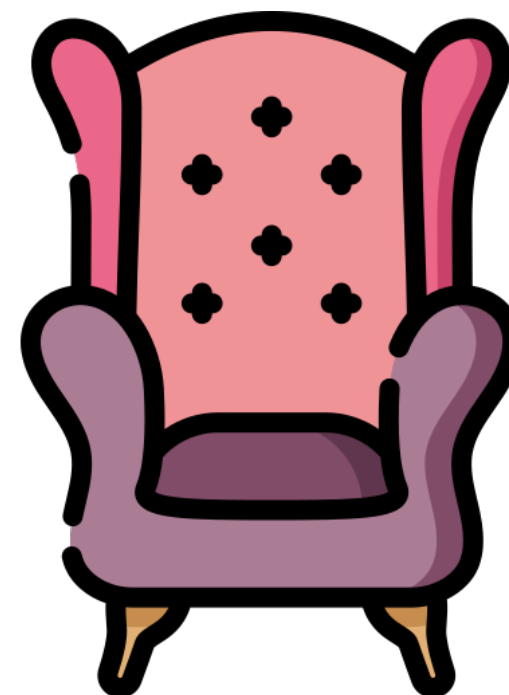
Word Class
(adjective)

Pronunciation / Syllables

(con-ven-ient)

Definition:

If you describe a place as convenient, you are pleased because it is near to where you are, or because you can reach another place from there quickly and easily.



Mr Rhodes was tired, so he sat on the **convenient** chair.

Phrases:

close and convenient

conveniently located

Synonym:

handy

opportune

Antonym:

awkward

inconvenient

Prefix / Suffix

-er

-ed

Rhyme:

Link Word:

seating

moment

Vocabulary Laboratory



Describe / Definition:

Use it in a sentence:

Focus Word (write below):

Word Class:

Synonyms:

(words with same / similar meaning)

Antonyms:

(words with opposite meaning)

Draw your sentence:

Rhymes:

(words that sound the same)

Link Words:

(Example: football = pitch, team, player)

Vocabulary Visualiser

Draw the
Grasshopper words
and bring them to life.



Word: dozen

Word: duo

Word: fortnight

Word: suitcase



Vocabulary Visualiser

Draw the **Shinobi**
words and bring
them to life.



Word: appetite

Word: divert

Word: mimic

Word: convenient



Matching Meanings

Draw lines from the **Grasshopper** words to their definitions.



Grasshopper Word

Grasshopper Definitions

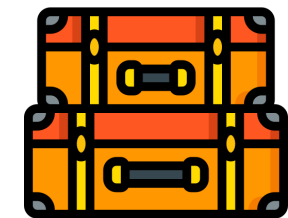
dozen

A *** is a period of two weeks.



duo

A *** is a box or bag with a handle and a hard frame in which you carry your clothes when you are travelling.



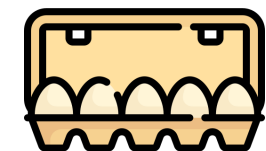
fortnight

You can refer to two people together as a ***, especially when they have something in common.



talent

If you have a *** things, you have twelve of them.



suitcase

*** is the natural ability to do something well.



Matching Meanings

Draw lines from the **Shinobi** words to their definitions.

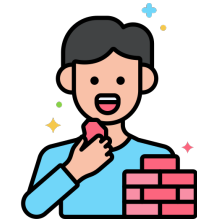


Shinobi Word

Shinobi Definitions

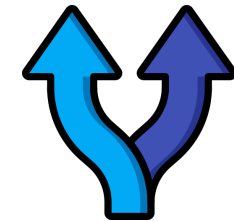
appetite

Your *** is your desire to eat. Someone's *** for something is their strong desire for it.



unfamiliar

To ***, is to make someone or something go via or be drawn to something that wasn't originally intended.



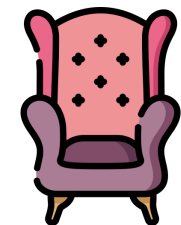
divert

If you *** the actions or voice of a person or animal, you imitate them, usually in a way that is meant to be amusing or entertaining.



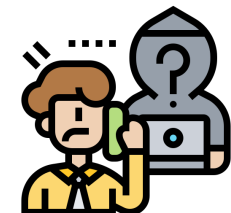
mimic

If you describe a place as ***, you are pleased because it is near to where you are, or because you can reach another place from there quickly and easily.



convenient

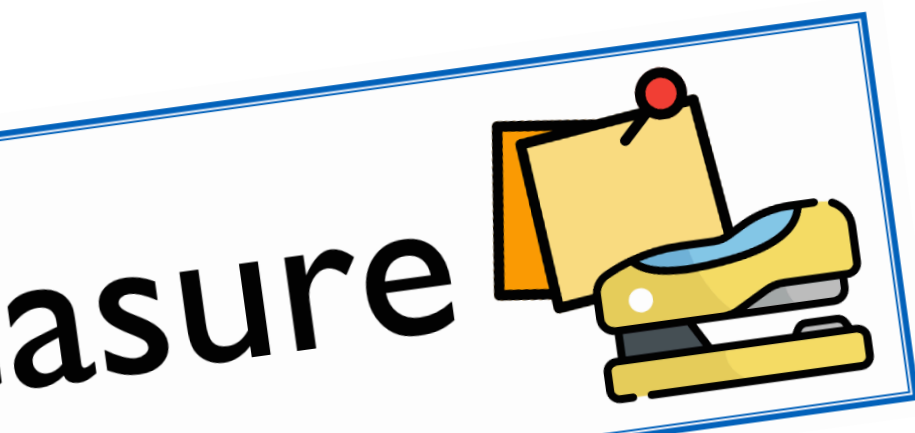
If something is *** to you, you know nothing or very little about it, because you have not seen or experienced it before.





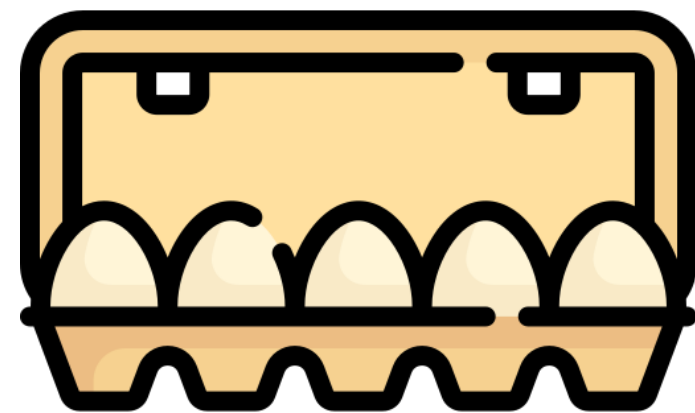
Display Slips

The following slides are for classroom display. As you teach each Word of the Day, words can be displayed in the classroom to enable pupils to use the taught vocabulary in an independent manner.





dozen



duo





fortnight

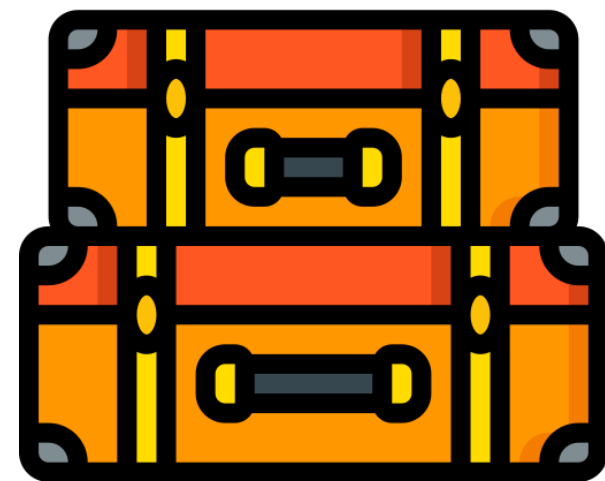


talent





suitcase

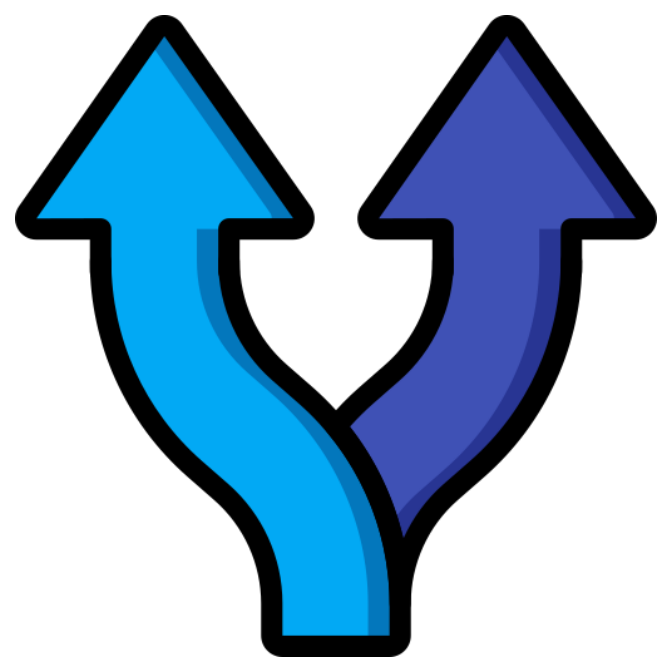
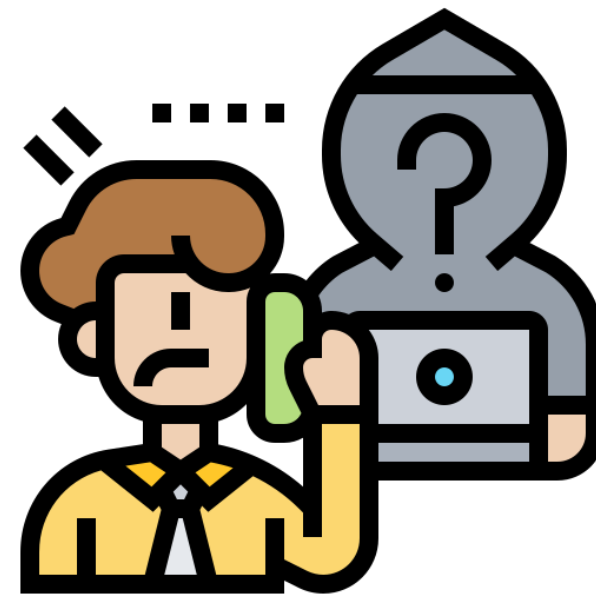


appetite





unfamiliar

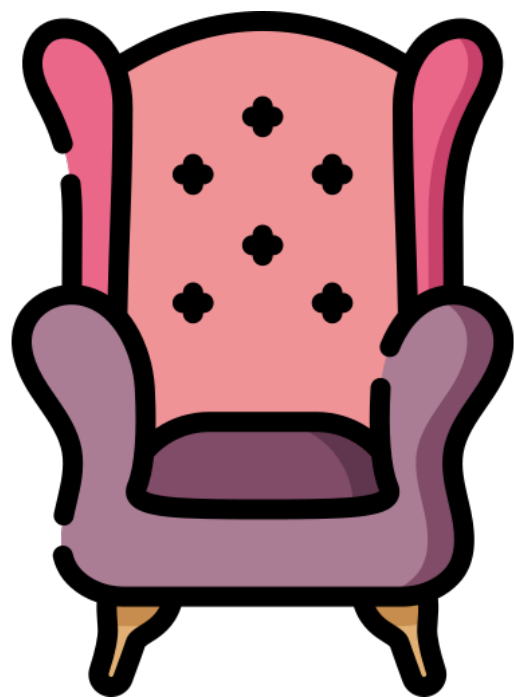
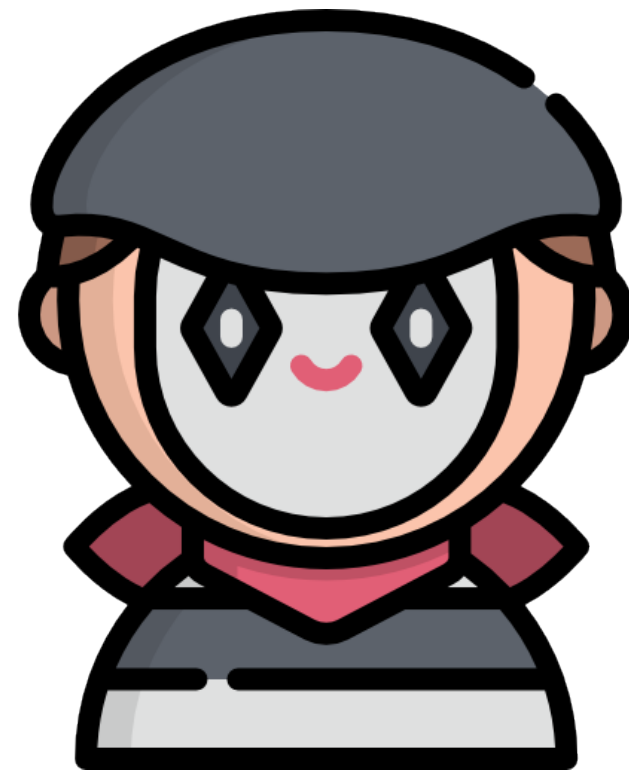


divert





mimic



convenient

