

Word of the Day

Spring Term 2021

Week 24 – 8th March 2021



This Week's Words

Grasshopper

- tear
- office
- spare
- chipped
- lift

Shinobi

- tolerate
- mutter
- fixation

VN VOCABULARY NINJA

Grasshopper Word of the Day

Word of the Day: heart
(heart)

Word Class: (noun)

Definition:
Your heart is the organ in your chest that pumps the blood around your body. People also use heart to refer to the area of their chest that is closest to their heart.

My heart was beating in my chest.

Rhyme: heart was beating
part
start

Link Word: blood
body

Shinobi Word of the Day

Word of the Day: calamitous
(ca-lam-i-tous)

Word Class: (adjective)

Definition:
If you describe an event or situation as calamitous, you mean it is very unfortunate or serious.

The calamitous twins destroyed the play room.

Phrases: the calamitous pair, completely calamitous

Synonym: disastrous, devastating

Antonym: good

Prefix / Suffix:

Rhyme: glamorous

Link Word: disaster, bad

'Words unlock the doors to a world of understanding...'

This Week's Words

Grasshopper

apart

permission

choice

awful

pong

Shinobi

drastic

obedient

origin

priority

realistic



VOCABULARY NINJA

Grasshopper (Tier 1)

apart

permission

choice

awful

pong



VOCABULARY NINJA

Shinobi (Tier 2)

drastic

obedient

origin

priority

realistic



VOCABULARY NINJA



Grasshopper Word of the Day

Word of the Day:

Pronunciation / Syllables

apart
(a-part)

Word Class
(adverb)

Definition:

When people or things are apart, they are some distance from each other.



Jenny and Amari didn't like being **apart**.

Phrases:

keep them apart

couldn't be apart

Synonym:

separate

Antonym:

together

Rhyme:

heart

start

Link Word:

time

distance



Grasshopper Word of the Day

Word of the Day: **permission**

Word Class
(noun)

Pronunciation / Syllables

(*per-mis-sion*)

Definition:

If someone who has authority over you gives you permission to do something, they say that they will allow you to do it.



Pat didn't have **permission** to eat his lunch yet.

Phrases:

you don't have permission

permission granted

Synonym:

consent
permit

Antonym:

Rhyme:

position
condition

Link Word:

begin
rules



Grasshopper Word of the Day

Word of the Day:

choice
(choice)

Word Class
(noun)

Pronunciation / Syllables

Definition:

If there is a choice of things, there are several of them and you can choose the one you want.



It was a **choice** between beef flavour or cheese flavour.

Phrases:

a difficult choice

please make a choice

Synonym:

Antonym:

Rhyme:

Link Word:

option

voice

food

solution

rejoice

life



Grasshopper Word of the Day

Word of the Day:

Pronunciation / Syllables

awful
(*aw-ful*)

Word Class
(adjective)

Definition:

If you say that someone or something is awful, you dislike that person or thing or you think that they are not very good.



Danny felt **awful** after the unkind words he said.

Phrases:

an awful thing to do

an awful decision

Synonym:

dreadful
ghastly

Antonym:

wonderful
excellent

Rhyme:

waffle

Link Word:

feeling
decision



Grasshopper Word of the Day

Word of the Day:

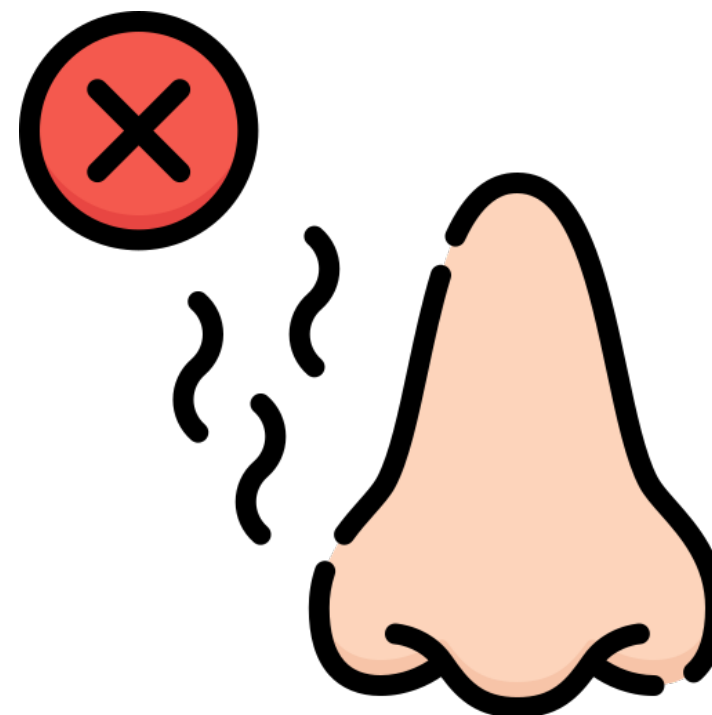
Pronunciation / Syllables

pong
(pong)

Word Class
(noun)

Definition:

A pong is an unpleasant
smell.



There was an awful **pong** in the corridor.

Phrases:

a terrible pong

very pongy

Synonym:

smell

odour

Antonym:

Rhyme:

long

song

Link Word:

food

smell



Shinobi Word of the Day

Word of the Day:

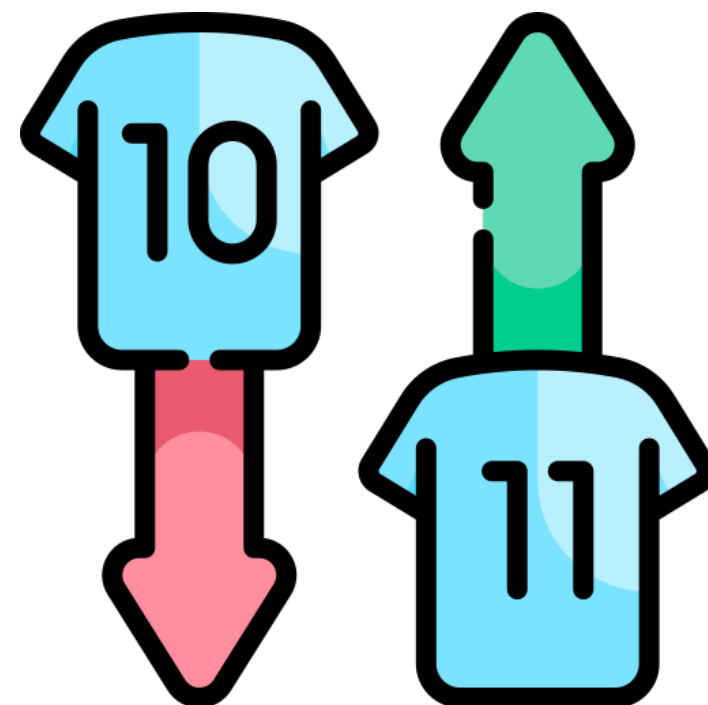
Pronunciation / Syllables

drastic
(*dras-tic*)

Word Class
(adjective)

Definition:

If you have to take drastic action in order to solve a problem, you have to do something extreme and basic to solve it.



Mr Jones made a **drastic** decision and brought off Ellis.

Phrases:

drastic actions require drastic solutions a drastic move

Synonym:

extreme
radical

Antonym:

mild
moderate

Prefix / Suffix:

-ally

Rhyme:

plastic
elastic

Link Word:

decision
action



Shinobi Word of the Day

Word of the Day:

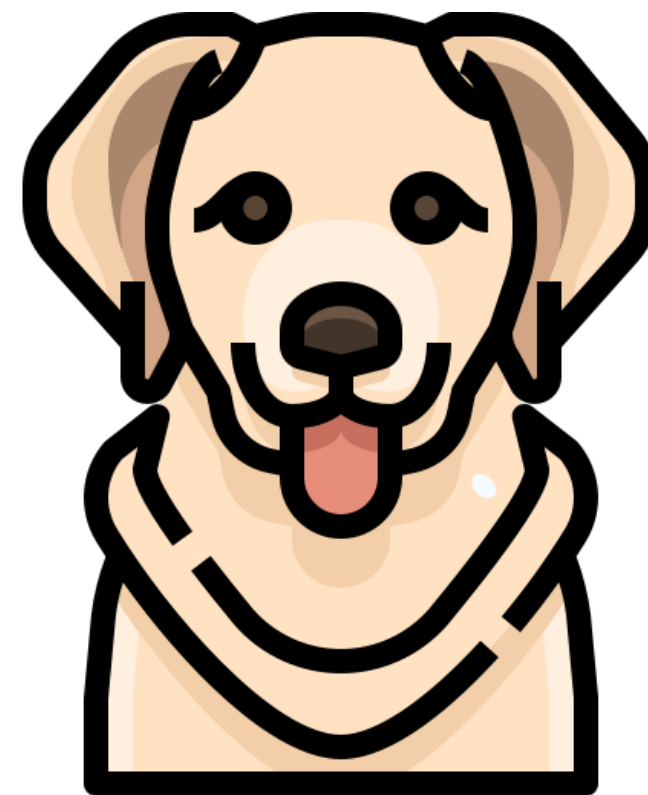
obedient
(o-be-di-ent)

Word Class
(adjective)

Pronunciation / Syllables

Definition:

A person or animal who is obedient does what they are told to do.



The school dog was very **obedient**.

Phrases:

always obedient

obedient and helpful

Synonym:

compliant

dutiful

Antonym:

rebellious

unruly

Prefix / Suffix:

-ly

dis-

Rhyme:

ingredient

disobedient

Link Word:

animal

person



Shinobi Word of the Day

Word of the Day:

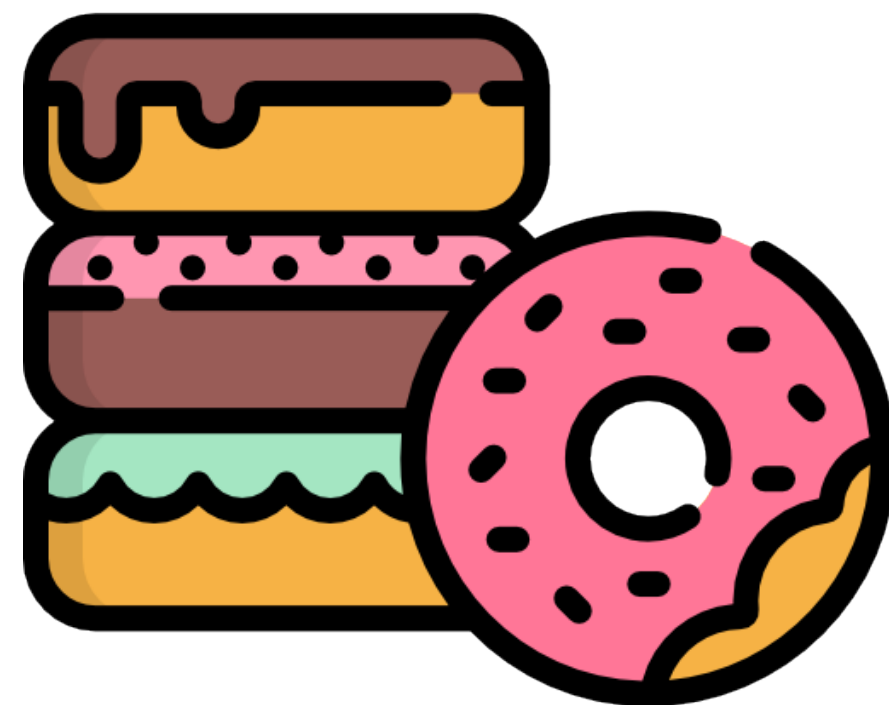
Pronunciation / Syllables

origin
(or-i-gin)

Word Class
(noun)

Definition:

You can refer to the beginning, cause, or source of something as its origin or origins.



No-one knew the **origin** of the mystery doughnuts.

Phrases:

an unknown origin

it had originated from

Synonym:

cause

root

Antonym:

end

conclusion

Prefix / Suffix:

-ally

-ate

Rhyme:

Link Word:

location

began



Shinobi Word of the Day

Word of the Day:

Pronunciation / Syllables

priority
(pri-or-i-ty)

Word Class
(noun)

Definition:

If something is a priority, it is the most important thing you have to do or deal with, or must be done or dealt with before everything else you have to do.



Being first in the line was Ezra's only **priority** at lunch.

Phrases:

priority number one was

let's make this a priority

Synonym:

Antonym:

Prefix / Suffix:

Rhyme:

Link Word:

-ised

authority

first

-ise

majority

important



Shinobi Word of the Day

Word of the Day:

realistic
(re-al-is-tic)

Word Class
(adjective)

Pronunciation / Syllables

Definition:

If you are realistic about a situation, you recognise and accept its true nature and try to deal with it in a practical way.



Kamil was **realistic** about the homework he could do.

Phrases:

it has to be realistic

it wasn't realistic because

Synonym:

practical
pragmatic

Antonym:

impractical
idealistic

Prefix / Suffix

-ly
un-

Rhyme:

artistic
optimistic

Link Word:

sensible
outlook

Vocabulary Laboratory



Describe / Definition:

Use it in a sentence:

Focus Word (write below):

Word Class:

Synonyms:

(words with same / similar meaning)

Antonyms:

(words with opposite meaning)

Draw your sentence:

Rhymes:

(words that sound the same)

Link Words:

(Example: football = pitch, team, player)

Vocabulary Visualiser

Draw the
Grasshopper words
and bring them to life.



Word: apart

Word: awful

Word: choice

Word: pong



Vocabulary Visualiser

Draw the **Shinobi**
words and bring
them to life.



Word: origin

Word: obedient

Word: priority

Word: realistic



Matching Meanings

Draw lines from the **Grasshopper** words to their definitions.

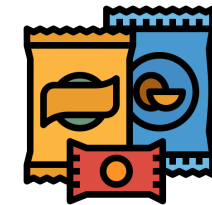


Grasshopper Word

Grasshopper Definitions

apart

If there is a *** of things, there are several of them and you can choose the one you want.



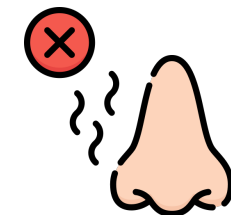
permission

When people or things are ***, they are some distance from each other.



choice

A *** is an unpleasant smell.



awful

If someone who has authority over you gives you *** to do something, they say that they will allow you to do it.



pong

If you say that someone or something is ***, you dislike that person or thing or you think that they are not very good.



Matching Meanings

Draw lines from the **Shinobi** words to their definitions.

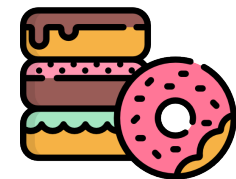


Shinobi Word

Shinobi Definitions

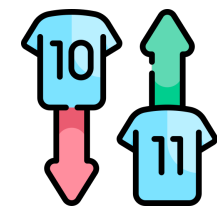
drastic

You can refer to the beginning, cause, or source of something as its origin or ***.



obedient

If you have to take *** action in order to solve a problem, you have to do something extreme and basic to solve it.



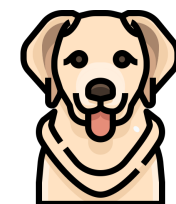
origin

If you are *** about a situation, you recognise and accept its true nature and try to deal with it in a practical way.



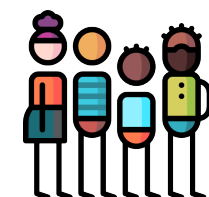
priority

A person or animal who is *** does what they are told to do.



realistic

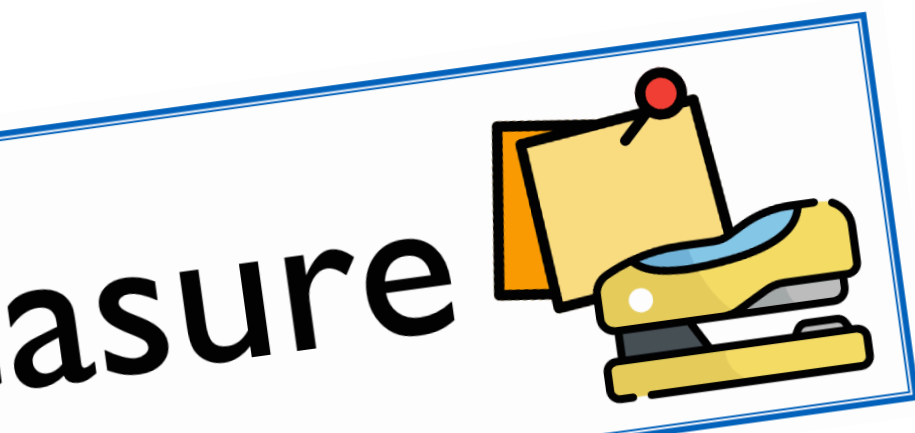
If something is a ***, it is the most important thing you have to do or deal with, or must be done or dealt with before everything else you have to do.





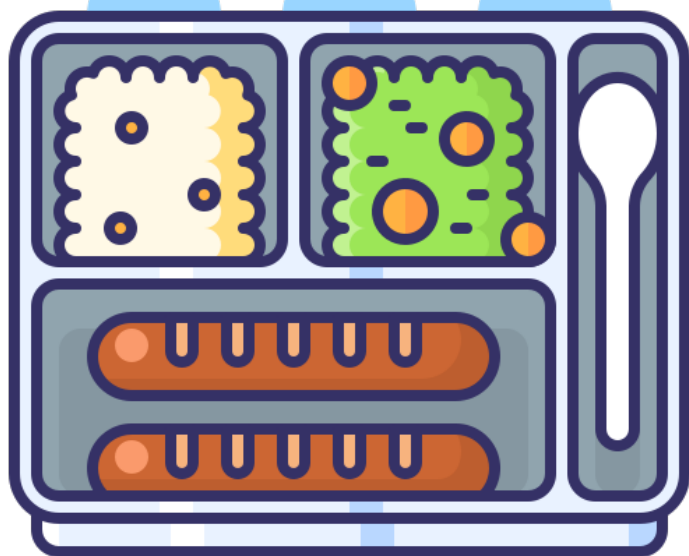
Display Slips

The following slides are for classroom display. As you teach each Word of the Day, words can be displayed in the classroom to enable pupils to use the taught vocabulary in an independent manner.





apart

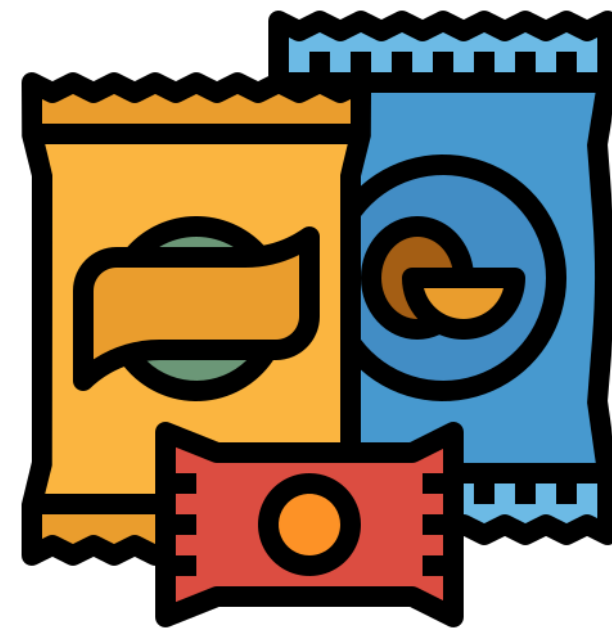


permission





choice

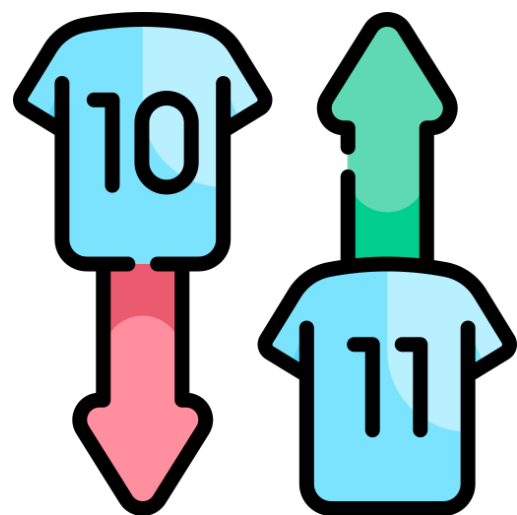
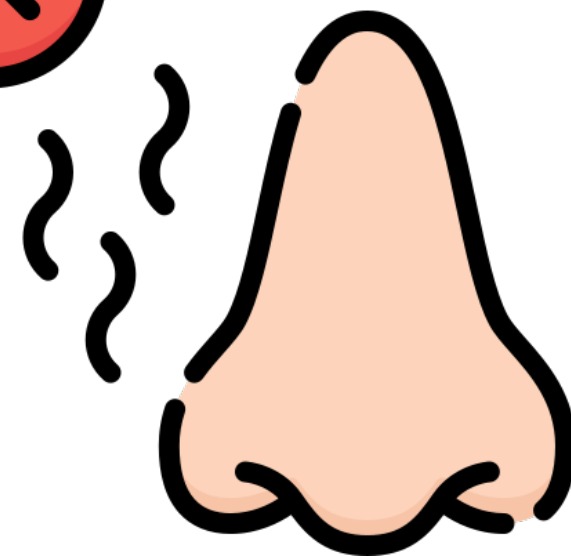


awful





pong

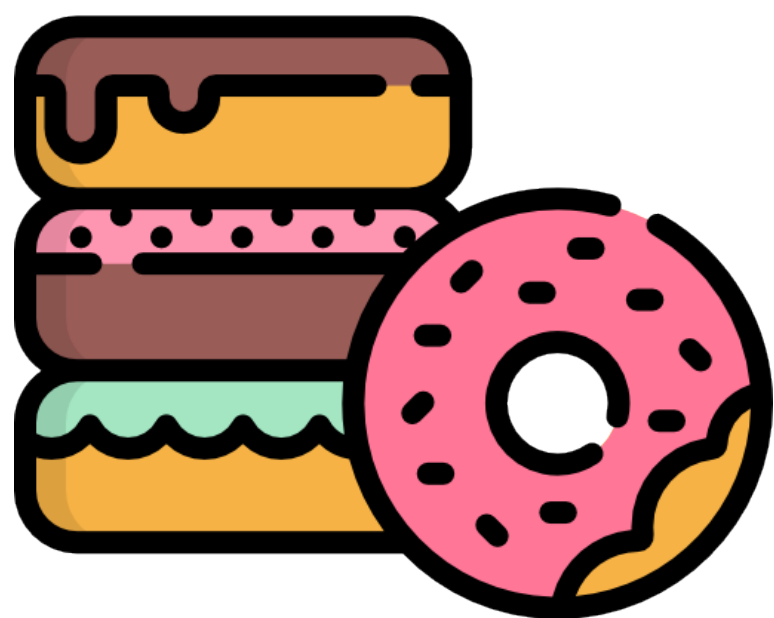
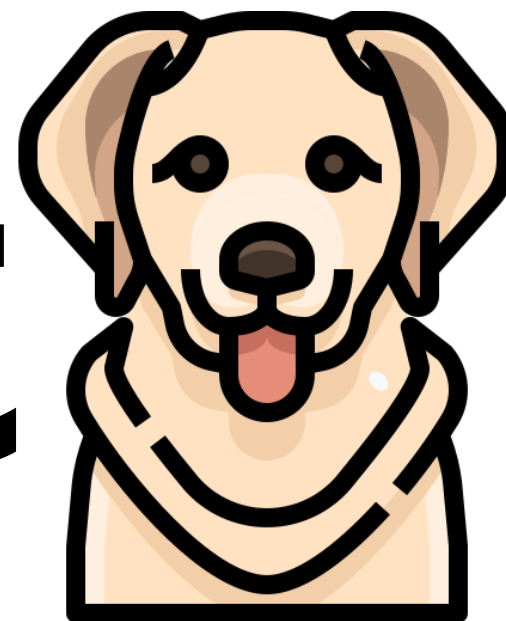


drastic





obedient



origin





priority



realistic

