

Word of the Day

Spring Term 2021

Week 25 – 15th March 2021



This Week's Words

Grasshopper

tear
office
spare
chipped
lift

Shinobi

tolerate
mutter
fixation

VN
VOCABULARY NINJA

Grasshopper Word of the Day

Word of the Day: heart
(heart)

Word Class: (noun)

Definition:
Your heart is the organ in your chest that pumps the blood around your body. People also use heart to refer to the area of their chest that is closest to their heart.

My heart was beating in my chest.

Rhyme: heart was beating
part
start

Link Word: blood
body

Shinobi Word of the Day

Word of the Day: calamitous
(ca-lam-i-tous)

Word Class: (adjective)

Definition:
If you describe an event or situation as calamitous, you mean it is very unfortunate or serious.

The calamitous twins destroyed the play room.

Phrases: the calamitous pair
completely calamitous

Synonym: disastrous
devastating

Antonym: good

Prefix / Suffix:

Rhyme: glamorous

Link Word: disaster
bad

'Words unlock the doors to a world of understanding...'

This Week's Words

Grasshopper

brush

serve

grow

feed

construct

Shinobi

habitat

routine

adjacent

retrieve

tentative



VOCABULARY NINJA

Grasshopper (Tier 1)

brush

serve

grow

feed

construct



VOCABULARY NINJA

Shinobi (Tier 2)

habitat

routine

adjacent

retrieve

tentative



VOCABULARY NINJA



Grasshopper Word of the Day

Word of the Day:

Pronunciation / Syllables

brush
(brush)

Word Class
(verb / noun)

Definition:

If you brush something or brush something such as dirt off it, you clean it or tidy it using a brush.



Alicia **brushed** her hair each morning.

Phrases:

gently brush

wash and brush

Synonym:

stroke

caress

Antonym:

Rhyme:

crush

rush

Link Word:

hair

sweeping



Grasshopper Word of the Day

Word of the Day:

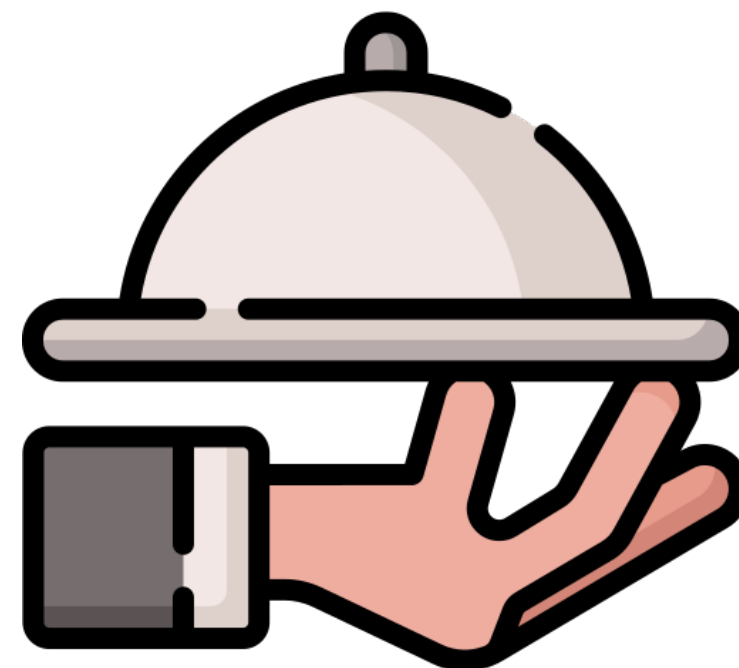
Pronunciation / Syllables

serve
(serve)

Word Class
(verb)

Definition:

If something serves people or an area, it provides them with something that they need.



Mrs Barker **served** the children their lunches.

Phrases:

serve the children

kindly serve

Synonym:

Antonym:

Rhyme:

Link Word:

curve

food

nerve

customer



Grasshopper Word of the Day

Word of the Day:

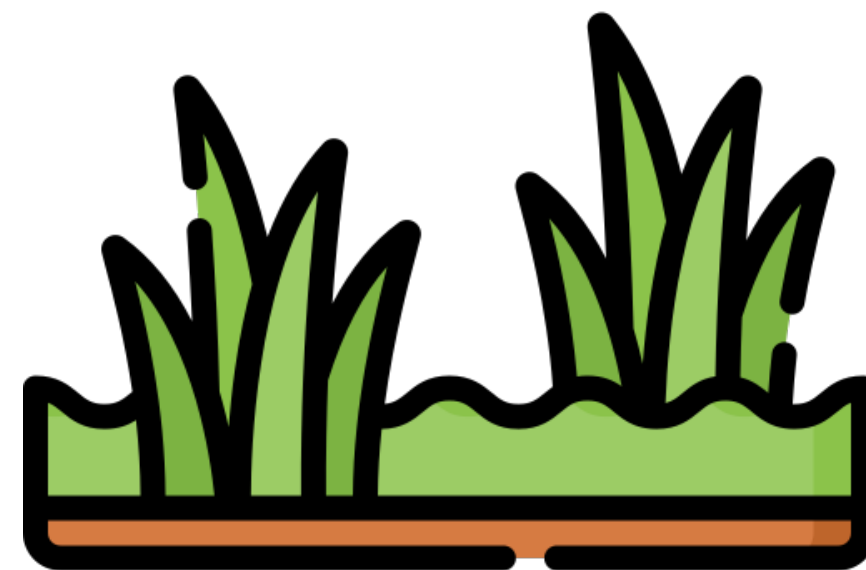
Pronunciation / Syllables

grow
(grow)

Word Class
(verb)

Definition:

When people, animals, and plants grow, they increase in size and change physically over a period of time.



The grass began to **grow** in the sunlight.

Phrases:

suddenly grow

slowly grow

Synonym:

sprout

develop

Antonym:

fail

shrink

Rhyme:

know

below

Link Word:

hair

children



Grasshopper Word of the Day

Word of the Day:

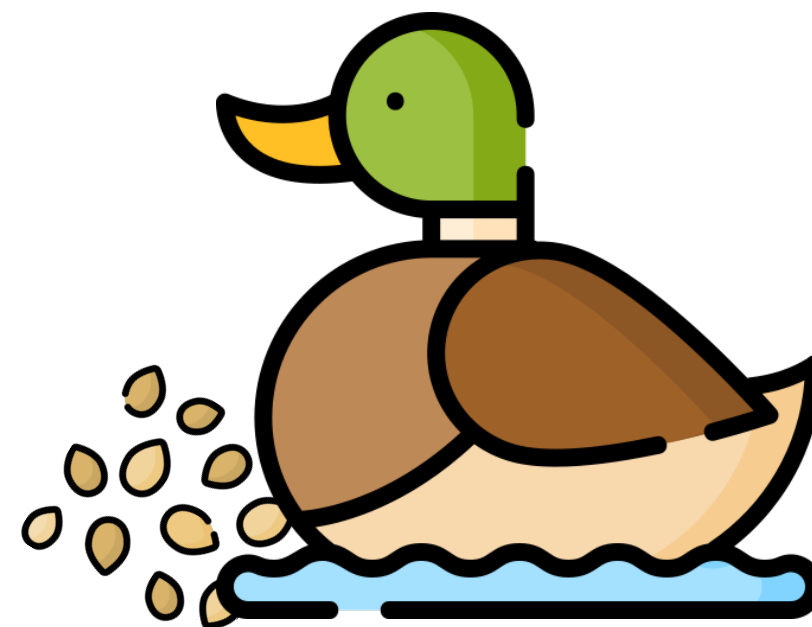
Pronunciation / Syllables

feed
(feed)

Word Class
(verb)

Definition:

If you feed a person or animal, you give them food to eat and sometimes actually put it in their mouths.



Sophie visited the pond to **feed** the ducks.

Phrases:

to feed everyone

feed everyone

Synonym:

nourish

cater for

Antonym:

Rhyme:

need

read

Link Word:

animals

plants



Grasshopper Word of the Day

Word of the Day: **construct**

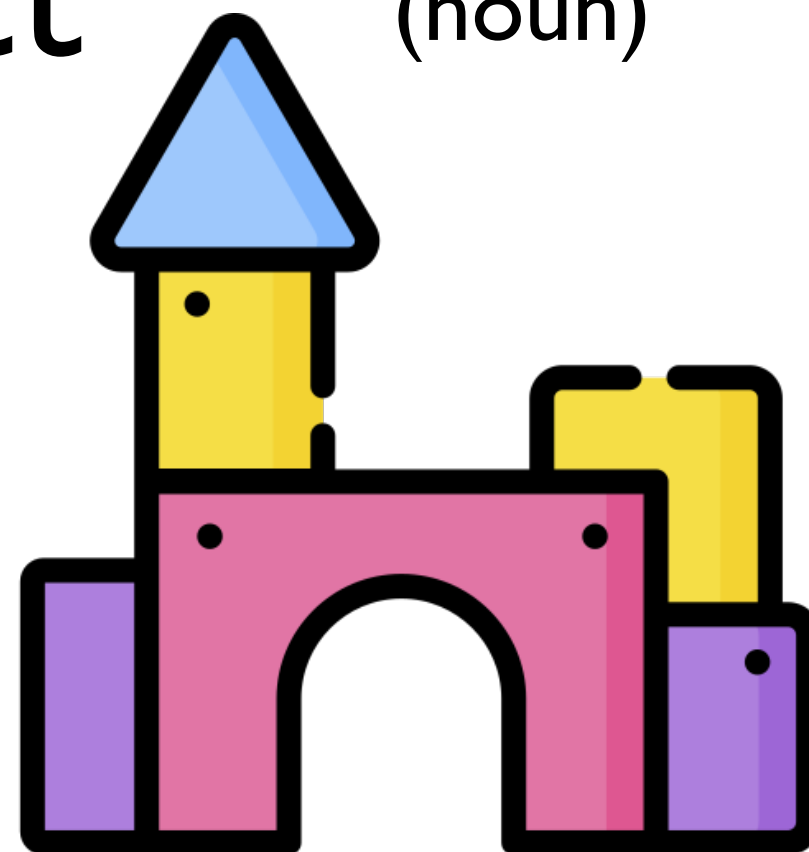
Word Class
(noun)

Pronunciation / Syllables

(con-struct)

Definition:

If you construct something such as a building, road, or machine, you build it or make it.



Hama **constructed** a castle using the blocks.

Phrases:

carefully construct

constructed with wood

Synonym:

build

assemble

Antonym:

demolish

Rhyme:

instruct

plucked

Link Word:

wood

metal



Shinobi Word of the Day

Word of the Day:

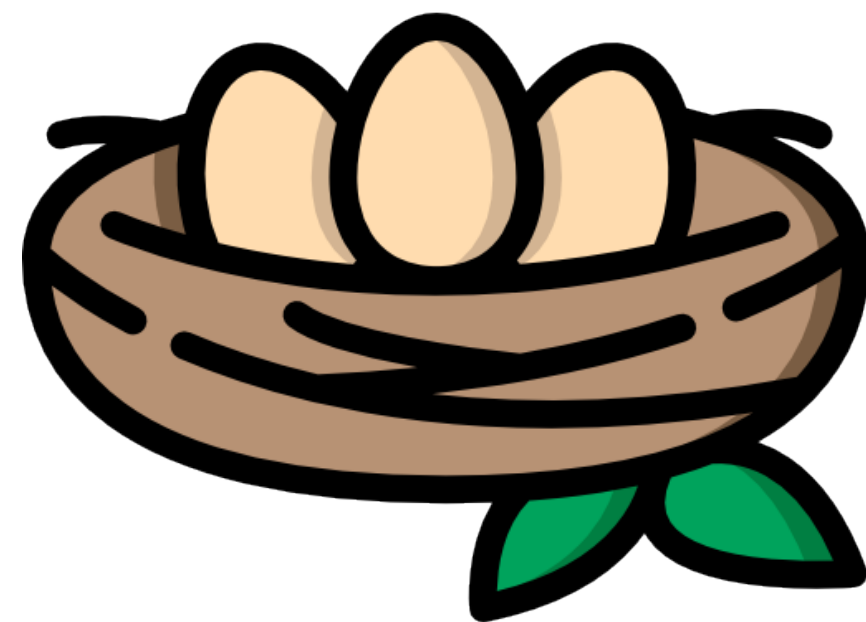
Pronunciation / Syllables

habitat
(*hab-i-tat*)

Word Class
(noun)

Definition:

The habitat of an animal or plant is the natural environment in which it normally lives or grows.



The bird's **habitat** was a nest in the tree.

Phrases:

The birds habitat

built the habitat

Synonym:

Antonym:

Prefix / Suffix:

Rhyme:

Link Word:

micro-
-tion

animal
human



Shinobi Word of the Day

Word of the Day:

routine
(rou-tine)

Word Class
(noun)

Pronunciation / Syllables

Definition:

A routine is the usual series of things that you do at a particular time. A routine is also the practice of regularly doing things in a fixed order.



Jack loved getting back into the **routine** of school.

Phrases:

the daily routine

his routine was

Synonym:

pattern

regime

Antonym:

Prefix / Suffix:

-ness

-ly

Rhyme:

between

machine

Link Word:

lessons

daily



Shinobi Word of the Day

Word of the Day:

adjacent
(ad-ja-cent)

Word Class
(adjective)

Pronunciation / Syllables

Definition:

If one thing is adjacent to another, the two things are next to each other.



Samiha always had her pencil **adjacent** to her ruler.

Phrases:

proudly adjacent

adjacent and in order

Synonym:

near to
beside

Antonym:

Prefix / Suffix:

non-
-ly

Rhyme:

complacent
patient

Link Word:

building
people



Shinobi Word of the Day

Word of the Day:

retrieve
(re-trieve)

Word Class
(verb)

Pronunciation / Syllables

Definition:

If you retrieve something, you get it back from the place where you left it.



Danny **retrieved** the answer from the text.

Phrases:

quickly retrieve

needed to retrieve the

Synonym:

salvage

rescue

Antonym:

Prefix / Suffix:

-ed

-er

Rhyme:

believe

leave

Link Word:

ball

words



Shinobi Word of the Day

Word of the Day:

tentative
(ten-ta-tive)

Word Class
(adjective)

Pronunciation / Syllables

Definition:

If someone is tentative, they are cautious and not very confident because they are uncertain or afraid.



Justin was **tentative** about attending the disco.

Phrases:

accepted tentatively

tentatively entered the water

Synonym:

provisional

hesitant

Antonym:

definite

confident

Prefix / Suffix

-ly

-ness

Rhyme:

sensitive

preventative

Link Word:

maybe

invitation

Vocabulary Laboratory



Describe / Definition:

Use it in a sentence:

Focus Word (write below):

Word Class:

Synonyms:

(words with same / similar meaning)

Antonyms:

(words with opposite meaning)

Draw your sentence:

Rhymes:

(words that sound the same)

Link Words:

(Example: football = pitch, team, player)

Vocabulary Visualiser

Draw the
Grasshopper words
and bring them to life.



Word: brush

Word: serve

Word: grow

Word: feed



Vocabulary Visualiser

Draw the **Shinobi**
words and bring
them to life.



Word: habitat

Word: routine

Word: adjacent

Word: retrieve



Matching Meanings

Draw lines from the **Grasshopper** words to their definitions.

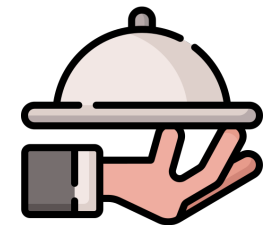


Grasshopper Word

Grasshopper Definitions

brush

If something *** people or an area, it provides them with something that they need.



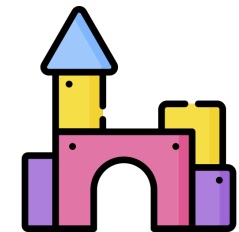
serve

When people, animals, and plants ***, they increase in size and change physically over a period of time.



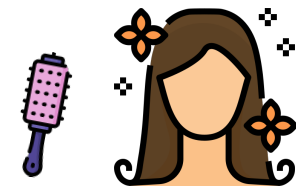
grow

If you *** something such as a building, road, or machine, you build it or make it.



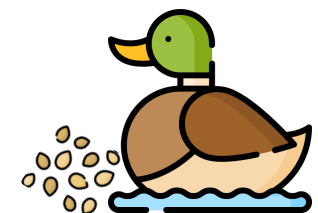
feed

If you *** something or brush something such as dirt off it, you clean it or tidy it using a ***.



construct

If you *** a person or animal, you give them food to eat and sometimes actually put it in their mouths.



Matching Meanings

Draw lines from the **Shinobi** words to their definitions.



Shinobi Word

Shinobi Definitions

habitat

A *** is the usual series of things that you do at a particular time. A *** is also the practice of regularly doing things in a fixed order.



routine

If you *** something, you get it back from the place where you left it.



adjacent

The *** of an animal or plant is the natural environment in which it normally lives or grows.



retrieve

If someone is ***, they are cautious and not very confident because they are uncertain or afraid.



tentative

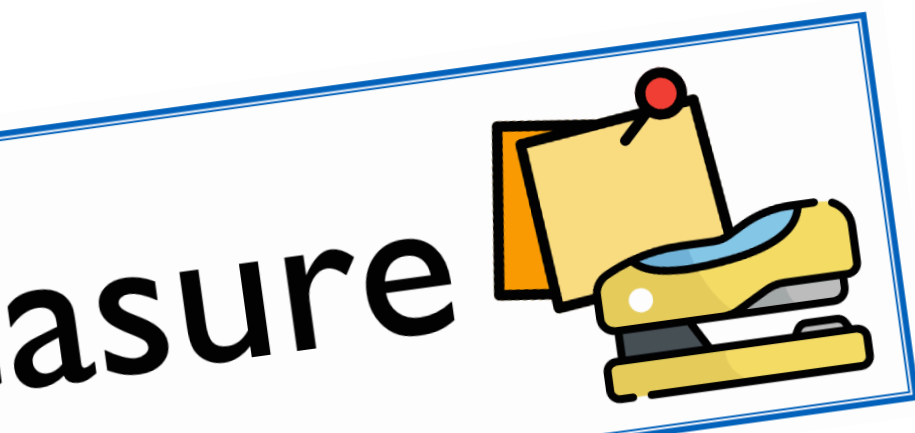
If one thing is *** to another, the two things are next to each other.





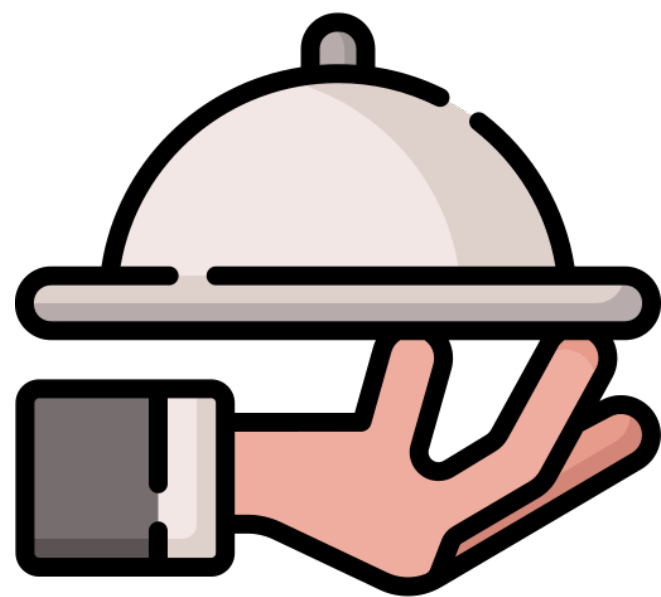
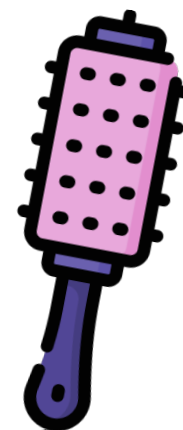
Display Slips

The following slides are for classroom display. As you teach each Word of the Day, words can be displayed in the classroom to enable pupils to use the taught vocabulary in an independent manner.





brush

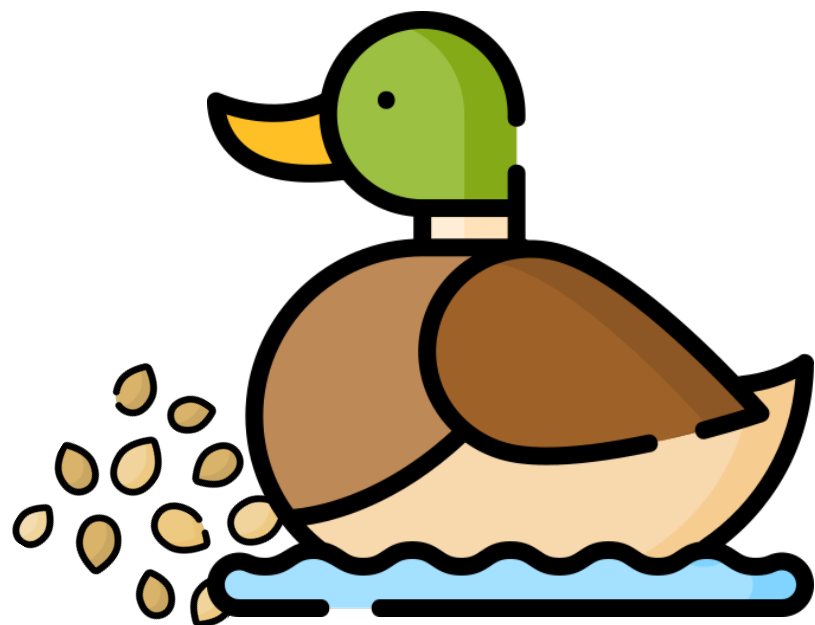


serve





grow

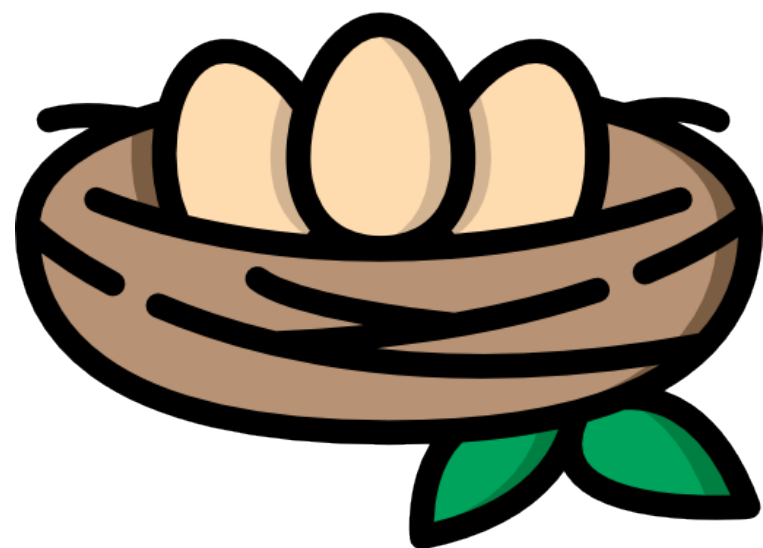
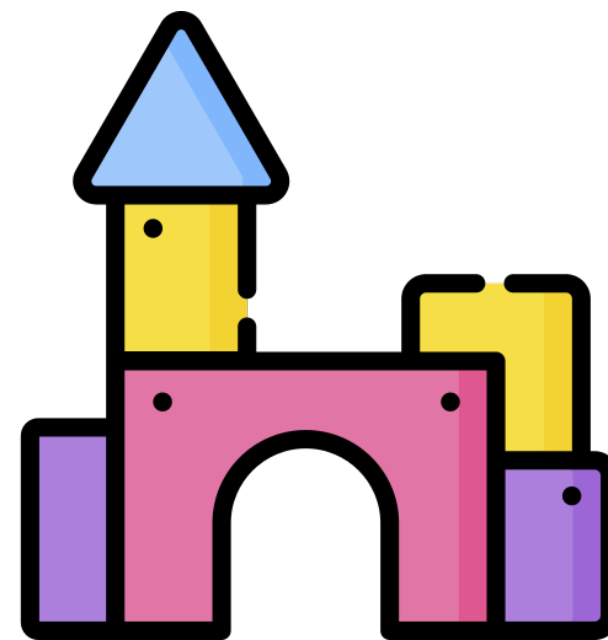


feed





construct

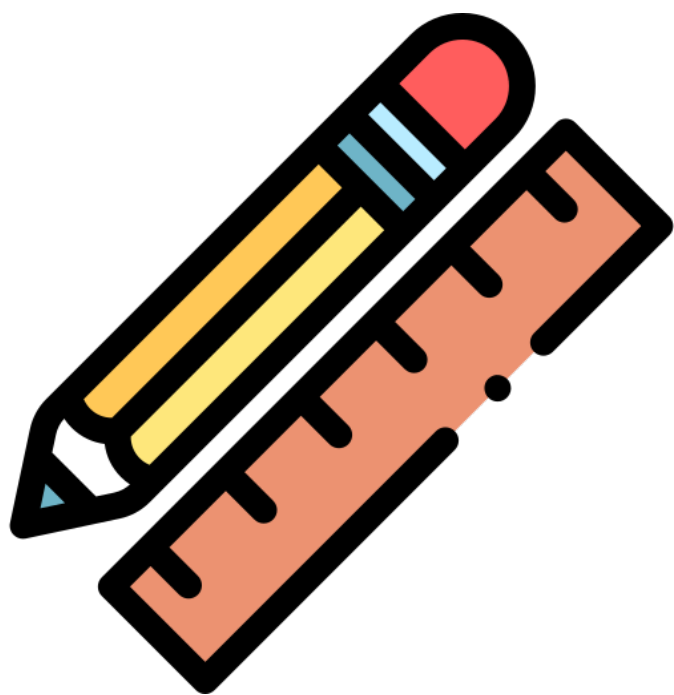


habitat





routine



adjacent





retrieve



tentative

