

Word of the Day

Autumn Term 2020

Week – 16th November 2020



This Week's Words

Grasshopper

tear
office
spare
chipped
lift

Shinobi

tolerate
mutter
fixation
unveil

VN VOCABULARY

Grasshopper Word of the Day

Word of the Day: picnic
(pic-nic)

Word Class: (verb / noun)

Definition: If you tear paper, cloth, or another material, or if it tears, you pull it into two pieces or you pull it so that a hole appears in it.

Phrases:

Synonym: word
word

Antonym: word
word

Rhyme: word
word

Link Word: word
word

Phrase Number One: The was a hole in Freddie's new school picnic.

Phrase Number Two:

Shinobi Word of the Day

Word of the Day: tear
(tear)

Word Class: (verb / noun)

Definition: If you tear paper, cloth, or another material, or if it tears, you pull it into two pieces or you pull it so that a hole appears in it.

Phrases:

Synonym: word
word

Antonym: word
word

Prefix / Suffix: word
word

Link Word: word
word

Phrase Number One: The was a tear in Freddie's new school book.

Phrase Number Two:

'Words unlock the doors to a world of understanding...'

This Week's Words

Grasshopper

truth

lie

exit

wish

pile

Shinobi

vile

betray

haul

wreckage

limp



VOCABULARY NINJA

Grasshopper (Tier 1)

truth

lie

exit

wish

pile



VOCABULARY NINJA

Shinobi (Tier 2)

vile

betray

haul

wreckage

limp



VOCABULARY NINJA



Grasshopper Word of the Day

Word of the Day:

Pronunciation / Syllables

truth
(*truth*)

Word Class
(noun)

Definition:

The truth about something is all the facts about it, rather than things that are imagined or invented.



It was important to always tell the **truth**.

Phrases:

told the truth

must tell the truth

Synonym:

fact

Antonym:

false

Rhyme:

youth

tooth

Link Word:

words

lie



Grasshopper Word of the Day

Word of the Day:

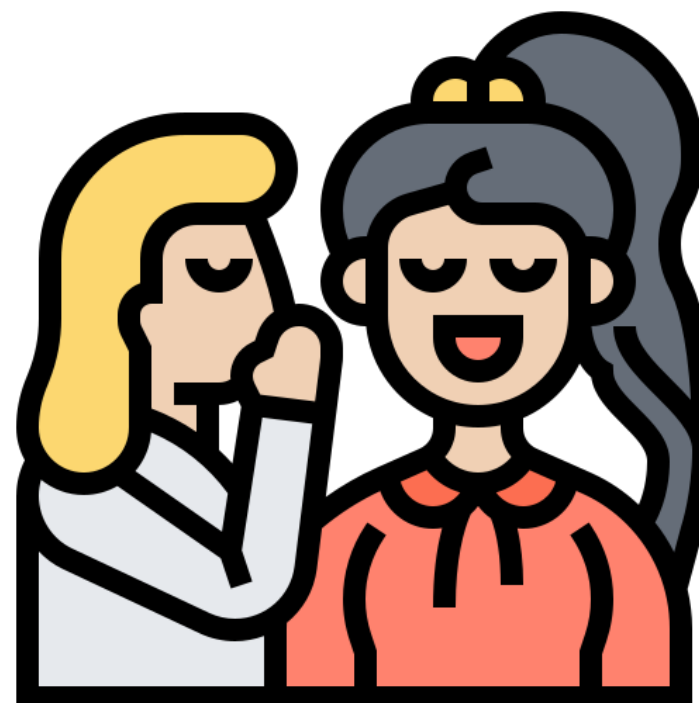
Pronunciation / Syllables

lie
(lie)

Word Class
(noun/verb)

Definition:

A lie is something that someone says or writes which they know is untrue.



Julie told a **lie** about doing her homework.

Phrases:

mustn't lie

shouldn't lie to

Synonym:

fib

Antonym:

truth
fact

Rhyme:

pie
die

Link Word:

people
trick



Grasshopper Word of the Day

Word of the Day:

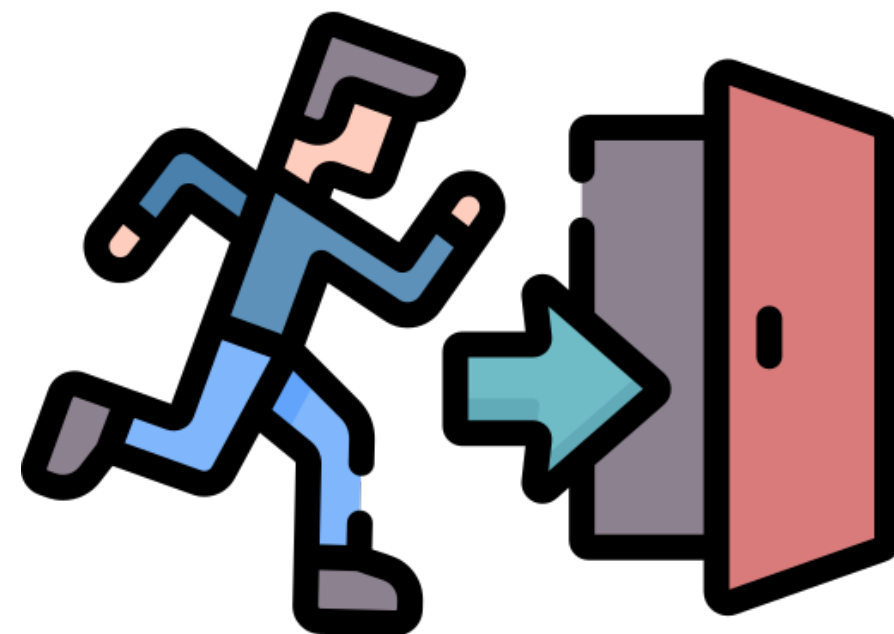
Pronunciation / Syllables

exit
(ex-it)

Word Class
(noun/verb)

Definition:

The exit is the door through which you can leave a public building.



The children moved to the **exit**, ready for lunch.

Phrases:

ran to the exit

used the exit

Synonym:

way out

door

Antonym:

entrance

Rhyme:

Link Word:

building

fire



Grasshopper Word of the Day

Word of the Day:

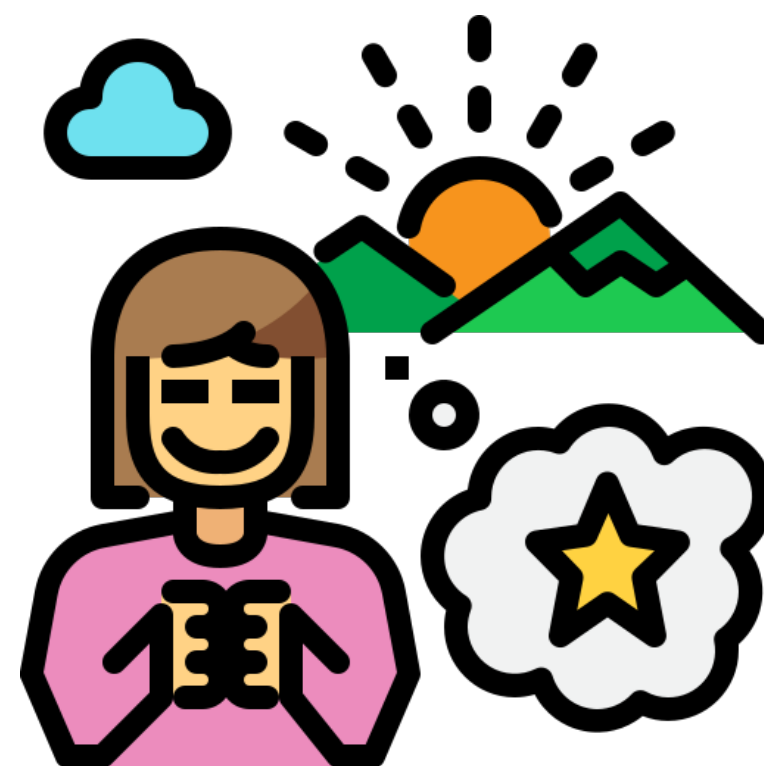
Pronunciation / Syllables

wish
(wish)

Word Class
(noun/verb)

Definition:

A wish is a desire or strong feeling that you want to have something or do something.



Everyone **wished** things would quickly get back to normal.

Phrases:

wished for

hoped and wished

Synonym:

crave

hope

Antonym:

Rhyme:

fish

dish

Link Word:

light

colour



Grasshopper Word of the Day

Word of the Day:

Pronunciation / Syllables

pile
(*pile*)

Word Class
(noun/verb)

Definition:

A pile of things is a mass of them that is high in the middle and has sloping sides.



Mr. Watson had a huge **pile** of books to mark.

Phrases:

an enormous pile

piled up high

Synonym:

heap

stack

Antonym:

Rhyme:

file

mile

Link Word:

books

leaves



Shinobi Word of the Day

Word of the Day:

Pronunciation / Syllables

vile
(vile)

Word Class
(adjective)

Definition:

If you say that someone or something is vile, you mean that they are very unpleasant.



The witch created a **vile** looking and smelling potion.

Phrases:

vile and disgusting

a vile person

Synonym:

foul

vulgar

Antonym:

pleasant

Prefix / Suffix:

Rhyme:

style

smile

Link Word:

person

behaviour



Shinobi Word of the Day

Word of the Day:

Pronunciation / Syllables

betray
(be-tray)

Word Class
(verb)

Definition:

If you betray someone who loves or trusts you, your actions hurt and disappoint them.



Alex **betrayed** his team by going to another team to play.

Phrases:

had betrayed us

your betrayal

Synonym:

let down

fail

Antonym:

be loyal

Prefix / Suffix:

-al

-ed

Rhyme:

today

display

Link Word:

friend

team



Shinobi Word of the Day

Word of the Day:

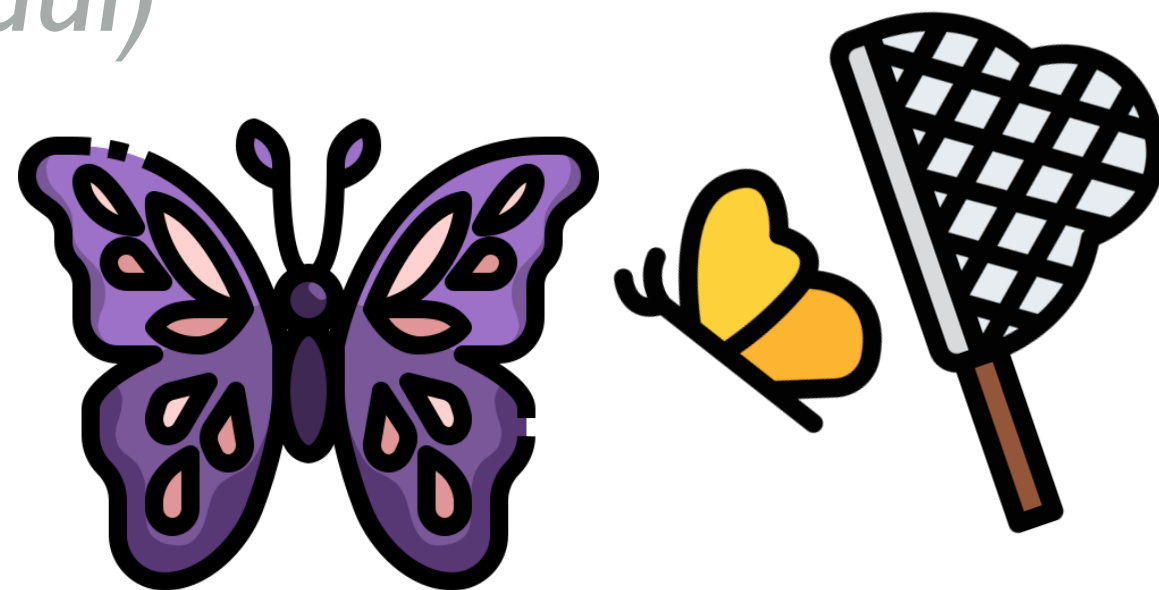
Pronunciation / Syllables

haul
(haul)

Word Class
(verb/noun)

Definition:

If you haul something which is heavy or difficult to move, you move it using a lot of effort.



The science club had a large **haul** of butterflies.

Phrases:

a significant haul

hailed the _____ into the

Synonym:

drag

pull

Antonym:

push

Prefix / Suffix:

-ed

-ing

Rhyme:

hall

ball

Link Word:

sport

fishing



Shinobi Word of the Day

Word of the Day:

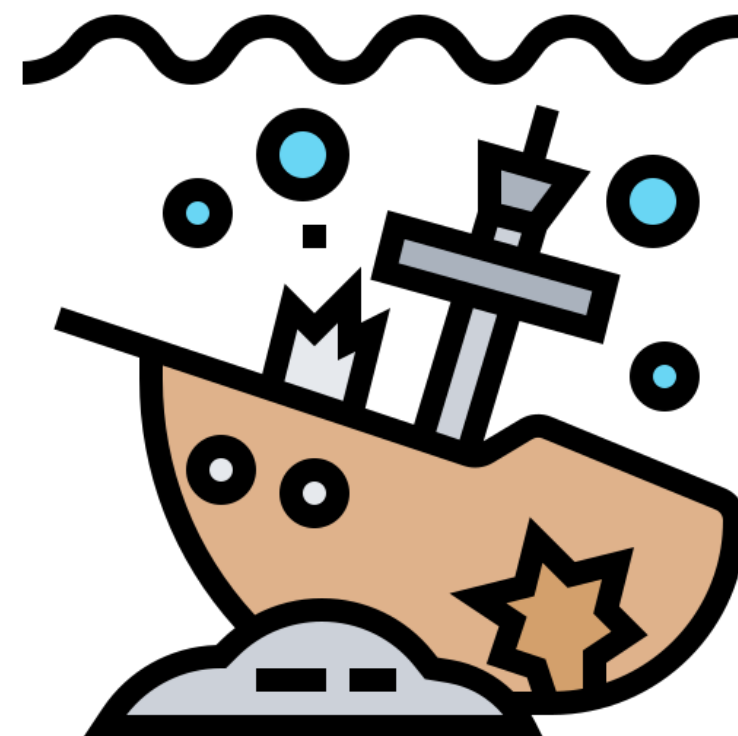
wreckage
(wreck-age)

Word Class
(noun)

Pronunciation / Syllables

Definition:

When something such as a plane, car, or building has been destroyed, you can refer to what remains as wreckage or the wreckage.



The **wreckage** of the ship was covered in history.

Phrases:

an ancient wreckage

the wreckage of

Synonym:

wreck
debris

Antonym:

Prefix / Suffix:

-s

Rhyme:

message

Link Word:

ship
aeroplane



Shinobi Word of the Day

Word of the Day:

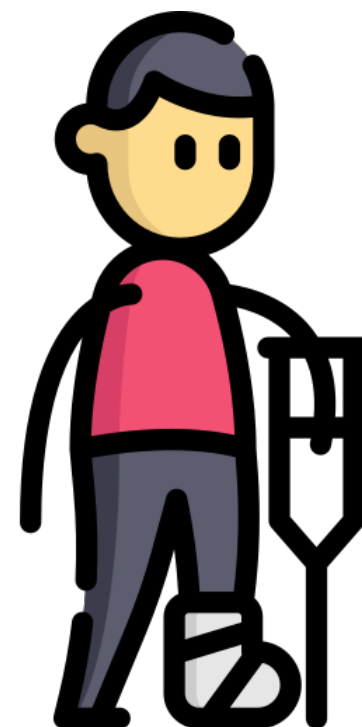
Pronunciation / Syllables

limp
(limp)

Word Class
(verb/noun)

Definition:

If a person or animal limps, they walk with difficulty or in an uneven way because one of their legs or feet is hurt.



Greg was **limping** after he was kicked during football.

Phrases:

limped in pain

limped away from

Synonym:

hobble

shuffle

Antonym:

Prefix / Suffix

-ed

-ing

Rhyme:

shrimp

wimp

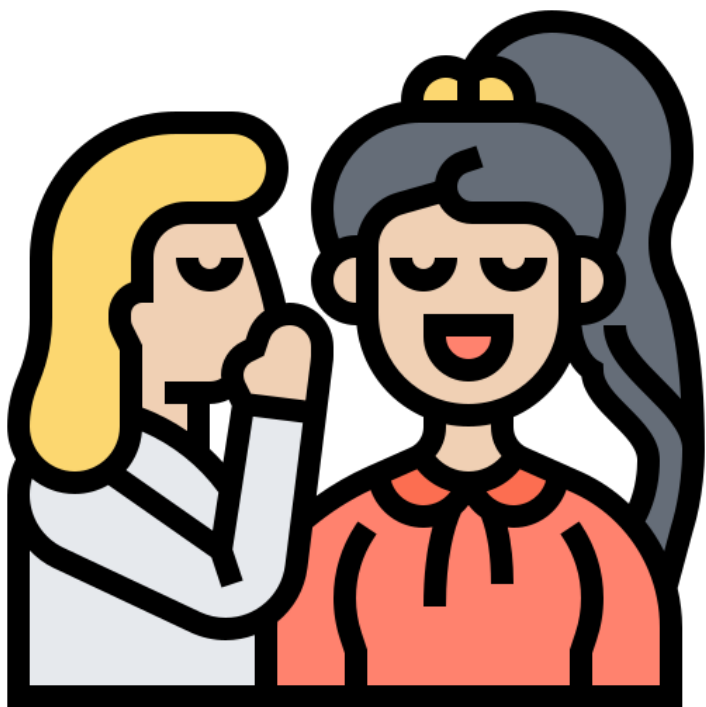
Link Word:

walk

injury



truth

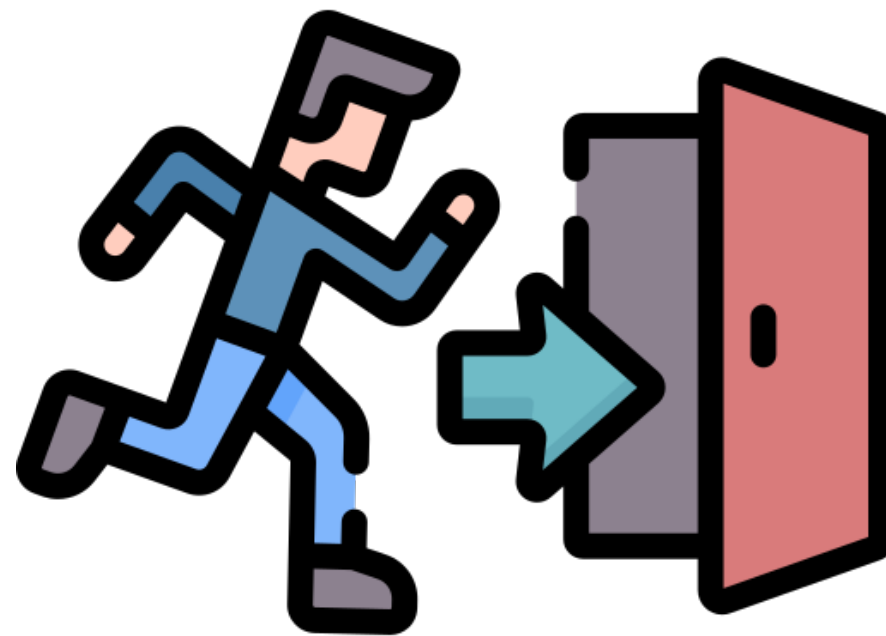


lie





exit

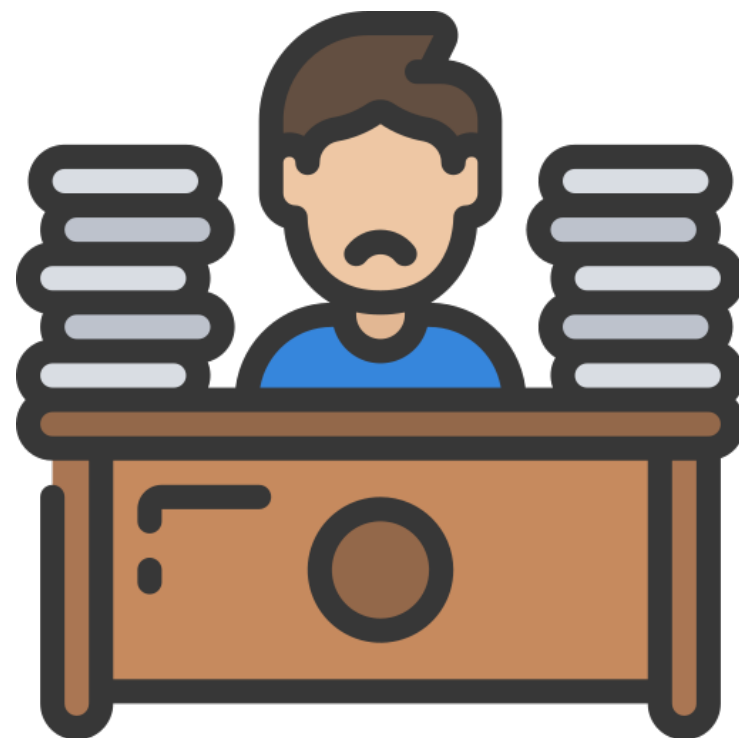


wish





pile

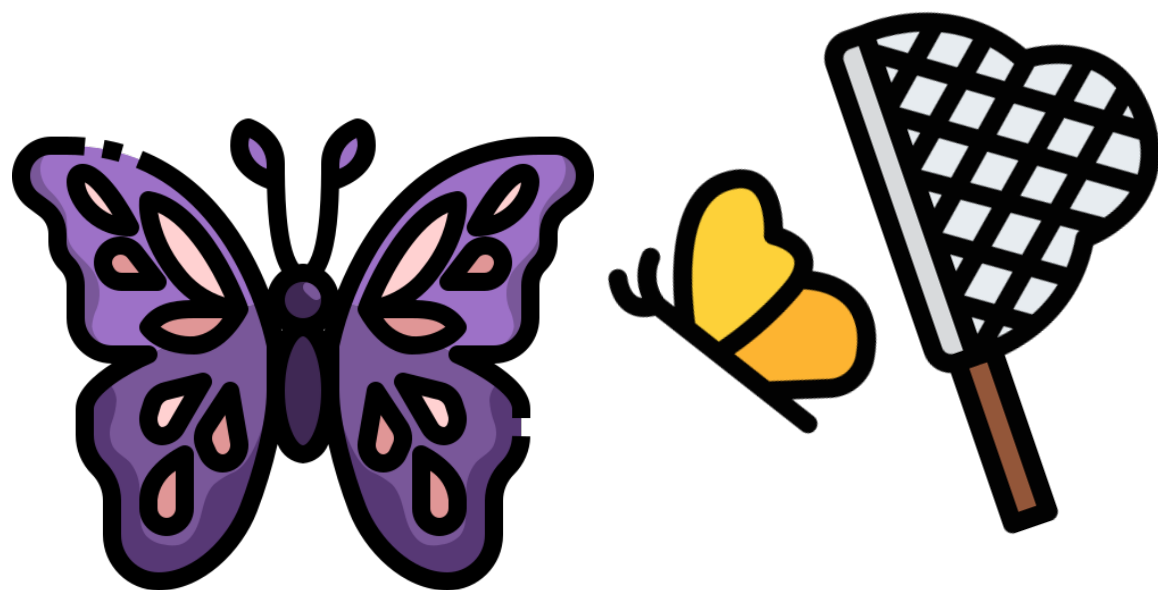


vile





betray

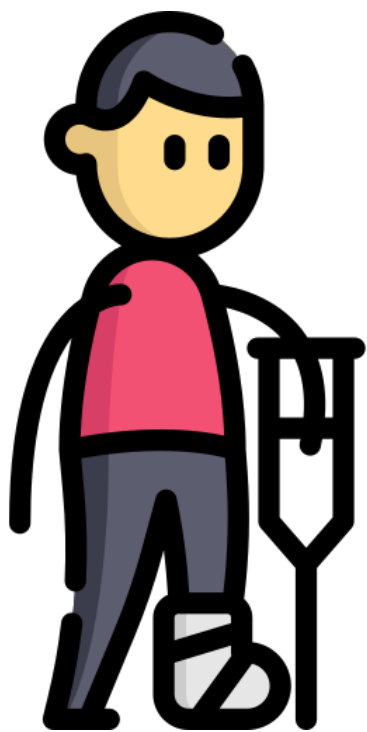
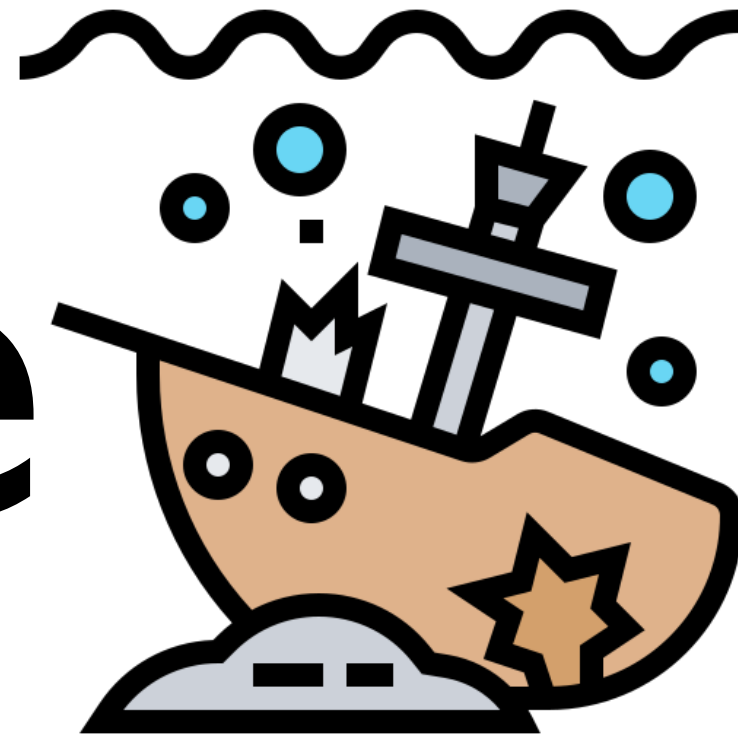


haul





wreckage



limp

