

Word of the Day

Spring Term 2021

Week 19 – 25th January 2021



This Week's Words

Grasshopper

- tear
- office
- spare
- chipped
- lift

Shinobi

- tolerate
- mutter
- fixation

VN VOCABULARY NINJA

Grasshopper Word of the Day

Word of the Day: heart
(heart)

Word Class: (noun)

Definition:
Your heart is the organ in your chest that pumps the blood around your body. People also use heart to refer to the area of their chest that is closest to their heart.

My heart was beating in my chest.

Rhyme: heart was beating
part
start

Link Word: blood
body

Shinobi Word of the Day

Word of the Day: calamitous
(ca-lam-i-tous)

Word Class: (adjective)

Definition:
If you describe an event or situation as calamitous, you mean it is very unfortunate or serious.

The calamitous twins destroyed the play room.

Phrases: the calamitous pair, completely calamitous

Synonym: disastrous, devastating

Antonym: good

Prefix / Suffix:

Rhyme: glamorous

Link Word: disaster, bad

'Words unlock the doors to a world of understanding...'

This Week's Words

Grasshopper

sway

rhyme

rule

stomp

gust

Shinobi

swoop

stumble

average

slumber

selection



VOCABULARY NINJA

Grasshopper (Tier 1)

sway

rhyme

rule

stomp

gust



VOCABULARY NINJA

Shinobi (Tier 2)

swoop

stumble

average

slumber

selection



VOCABULARY NINJA



Grasshopper Word of the Day

Word of the Day:

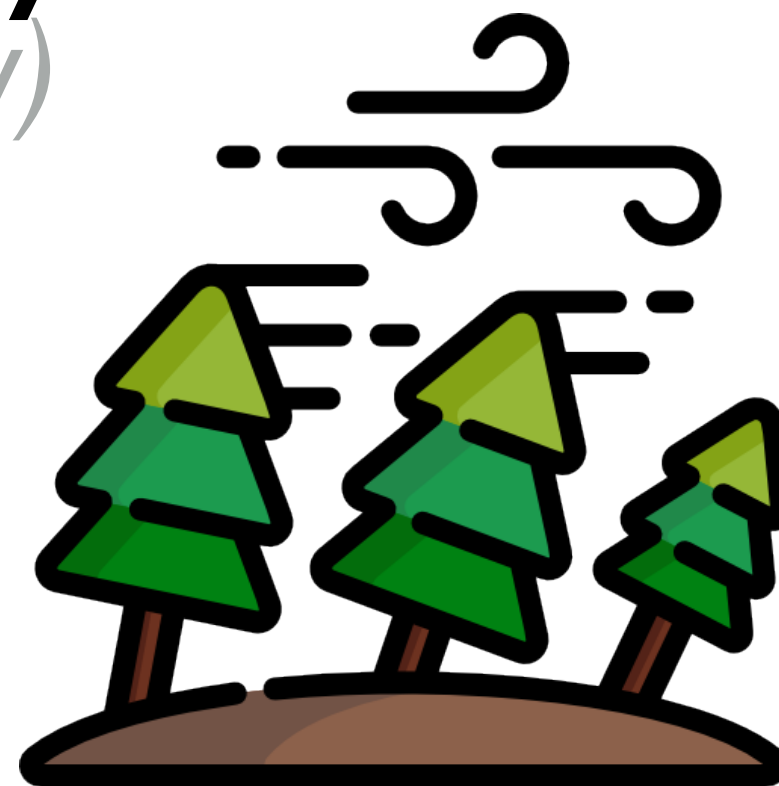
Pronunciation / Syllables

sway
(sway)

Word Class
(verb)

Definition:

When people or things sway, they lean or swing slowly from one side to the other.



The trees on the playground **swayed** in the wind.

Phrases:

bent and swayed

swayed back and forth

Synonym:

swing

shake

Antonym:

Rhyme:

they

way

Link Word:

people

plants



Grasshopper Word of the Day

Word of the Day:

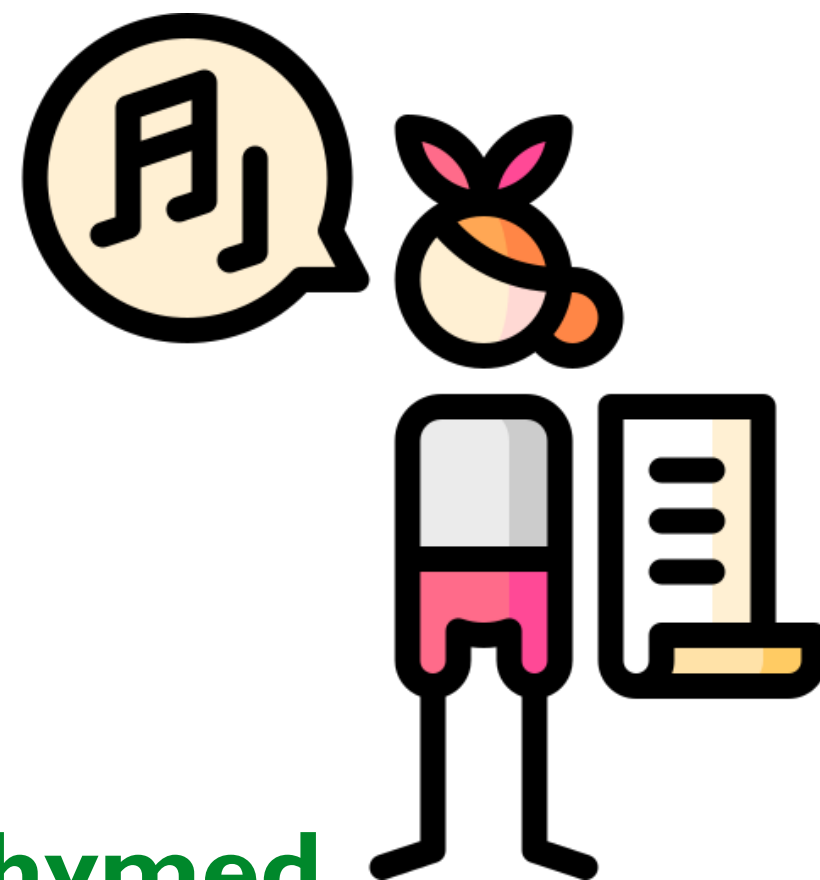
Pronunciation / Syllables

rhyme
(rhyme)

Word Class
(verb / noun)

Definition:

If one word rhymes with another or if two words rhyme, they have a very similar sound. Words that rhyme with each other are often used in poems.



Class 5 loved poems that **rhymed**.

Phrases:

rhyming is fun

time to rhyme

Synonym:

Antonym:

Rhyme:

Link Word:

time

words

crime

poems



Grasshopper Word of the Day

Word of the Day:

Pronunciation / Syllables

rule
(rule)

Word Class
(noun)

Definition:

Rules are instructions that tell you what you are allowed to do and what you are not allowed to do.



In order to be safe, we must follow the school rules.

Phrases:

the rules were clear

don't break the rules

Synonym:

regulation

order

Antonym:

Rhyme:

school

cool

Link Word:

follow

break



Grasshopper Word of the Day

Word of the Day:

Pronunciation / Syllables

stomp
(stomp)

Word Class
(verb)

Definition:

If you stomp somewhere, you walk there with very heavy steps, often because you are angry.



Mr Robson **stomped** across the hall in his muddy boots.

Phrases:

stomped across

stomped moodily

Synonym:

stamp

Antonym:

tip-toe

Rhyme:

swamp

comp

Link Word:

mud

crush



Grasshopper Word of the Day

Word of the Day:

Pronunciation / Syllables

gust
(gust)

Word Class
(verb / noun)

Definition:

A gust is a short, strong, sudden rush of wind.



A **gust** of wind nearly knocked the reception children over.

Phrases:

a huge gust

gusts and gales

Synonym:

blast
gale

Antonym:

breeze

Rhyme:

just
dust

Link Word:

storm
air



Shinobi Word of the Day

Word Class
(verb)

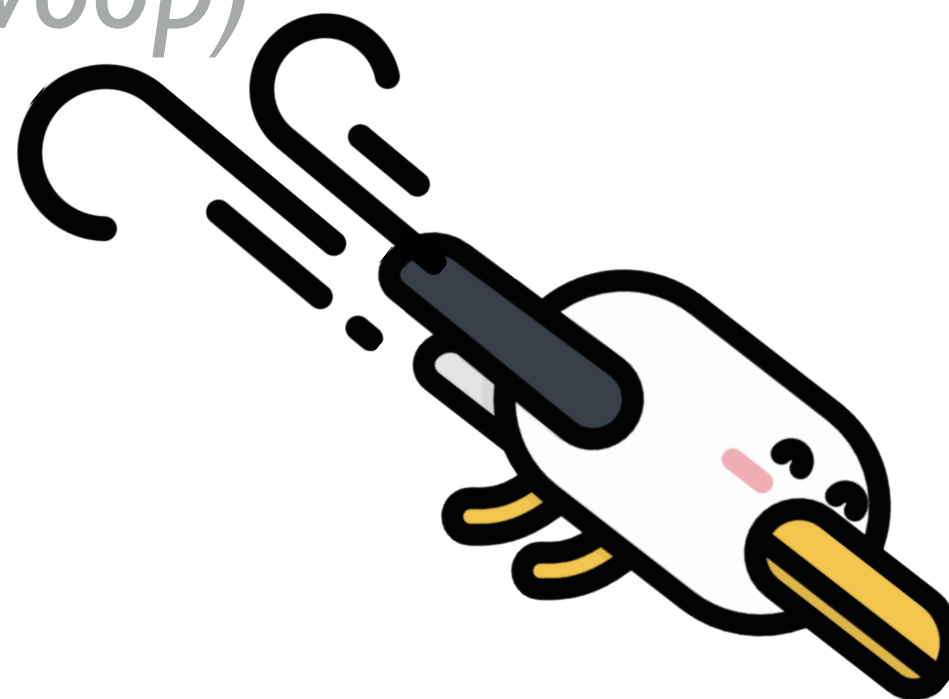
Word of the Day:

Pronunciation / Syllables

swoop
(swoop)

Definition:

When a bird or aeroplane swoops, it suddenly moves downwards through the air in a smooth curving movement.



A seagull **swooped** down and pinched my pork pie.

Phrases:

swooped speedily

stealthily swooped

Synonym:

dive

pounce

Antonym:

Prefix / Suffix:

-ed

-ing

Rhyme:

loop

scoop

Link Word:

bird

aeroplane



Shinobi Word of the Day

Word of the Day:

stumble
(stum-ble)

Word Class
(verb)

Pronunciation / Syllables

Definition:

If you stumble, you put your foot down awkwardly while you are walking or running and nearly fall over.



John **stumbled** on the coats that were on the floor.

Phrases:

unknowingly stumbled

stumble and trip

Synonym:

trip

stagger

Antonym:

Prefix / Suffix:

-ed

-ing

Rhyme:

tumble

crumble

Link Word:

injure

balance



Shinobi Word of the Day

Word of the Day:

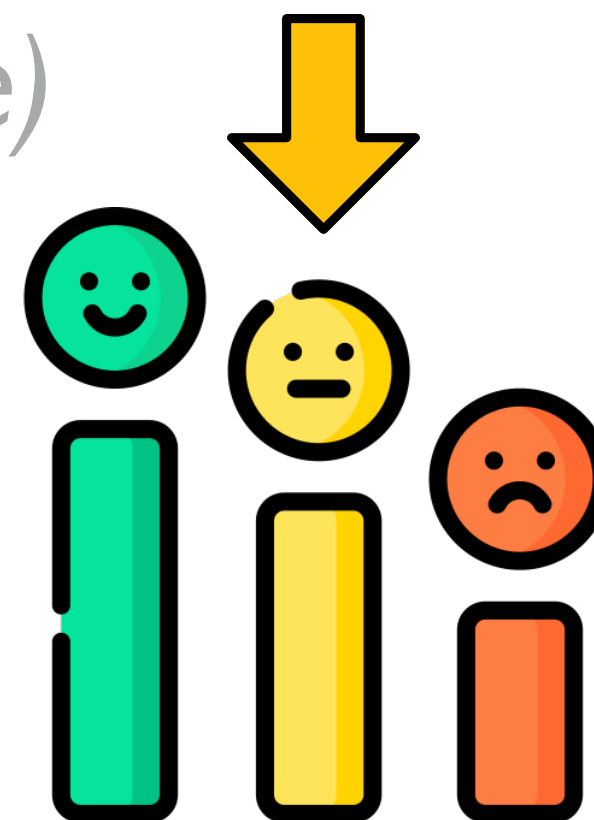
Pronunciation / Syllables

average
(av-er-age)

Word Class
(adjective)

Definition:

An average person or thing is typical or normal.



This week's spelling scores were rather **average**.

Phrases:

an average score

the average was

Synonym:

ordinary

standard

Antonym:

outstanding

exceptional

Prefix / Suffix:

-ed

-ing

Rhyme:

beverage

leverage

Link Word:

ok

acceptable



Shinobi Word of the Day

Word of the Day:

slumber
(*slum-ber*)

Word Class
(noun / verb)

Pronunciation / Syllables

Definition:

Slumber or sleep is the natural state of rest in which your eyes are closed, your body is inactive, and your mind does not think.



Mr Jones fell into a deep **slumber** at his desk.

Phrases:

quickly slumbered

a peaceful slumber

Synonym:

snooze

doze

Antonym:

wake-up

Prefix / Suffix:

-ed

Rhyme:

number

lumber

Link Word:

lazy

tired



Shinobi Word of the Day

Word of the Day:

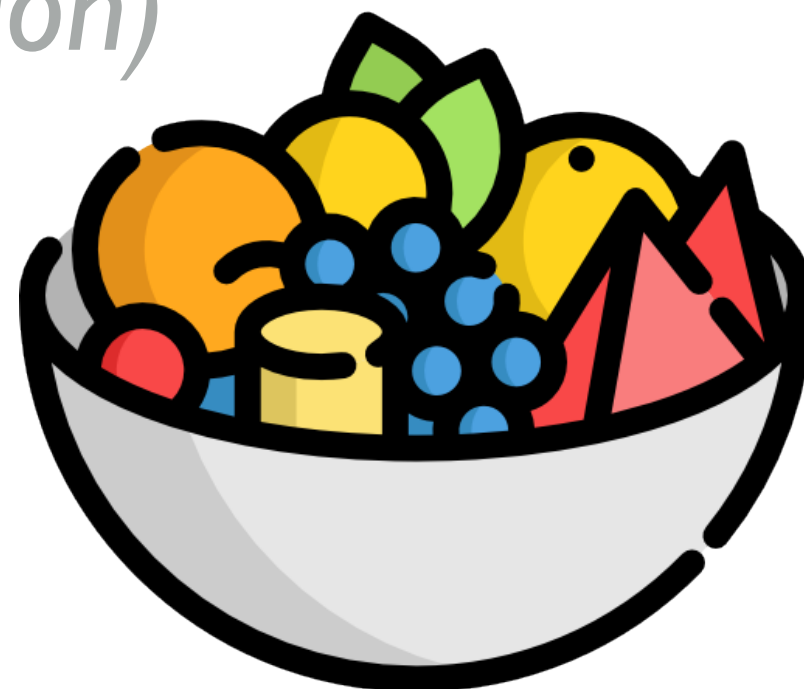
selection
(se-lec-tion)

Word Class
(noun)

Pronunciation / Syllables

Definition:

A selection of people or things is a set of them that have been selected from a larger group.



There was a fabulous **selection** of fruit to choose from.

Phrases:

a magnificent selection of

a limited selection of

Synonym:

range

variety

Antonym:

Prefix / Suffix

-s

Rhyme:

collection

direction

Link Word:

clothes

shoes

Vocabulary Laboratory



Describe / Definition:

Use it in a sentence:

Focus Word (write below):

Word Class:

Synonyms:

(words with same / similar meaning)

Antonyms:

(words with opposite meaning)

Draw your sentence:

Rhymes:

(words that sound the same)

Link Words:

(Example: football = pitch, team, player)

Vocabulary Visualiser

Draw the
Grasshopper words
and bring them to life.



Word: sway

Word: rule

Word: stomp

Word: gust



Vocabulary Visualiser

Draw the **Shinobi**
words and bring
them to life.



Word: swoop

Word: stumble

Word: slumber

Word: selection



Matching Meanings

Draw lines from the **Grasshopper** words to their definitions.



Grasshopper Word

sway

rhyme

rule

stomp

gust

Grasshopper Definitions

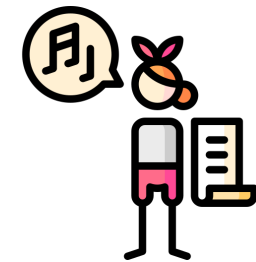
If one word *** with another or if two words ***, they have a very similar sound. Words that *** with each other are often used in poems.

If you *** somewhere, you walk there with very heavy steps, often because you are angry.

When people or things ***, they lean or swing slowly from one side to the other.

A *** is a short, strong, sudden rush of wind.

*** are instructions that tell you what you are allowed to do and what you are not allowed to do.



Matching Meanings

Draw lines from the **Shinobi** words to their definitions.

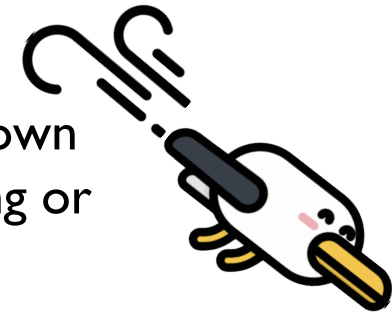


Shinobi Word

Shinobi Definitions

swoop

If you ***, you put your foot down awkwardly while you are walking or running and nearly fall over.



stumble

A *** of people or things is a set of them that have been selected from a larger group.



average

When a bird or aeroplane ***, it suddenly moves downwards through the air in a smooth curving movement.



slumber

*** or sleep is the natural state of rest in which your eyes are closed, your body is inactive, and your mind does not think.



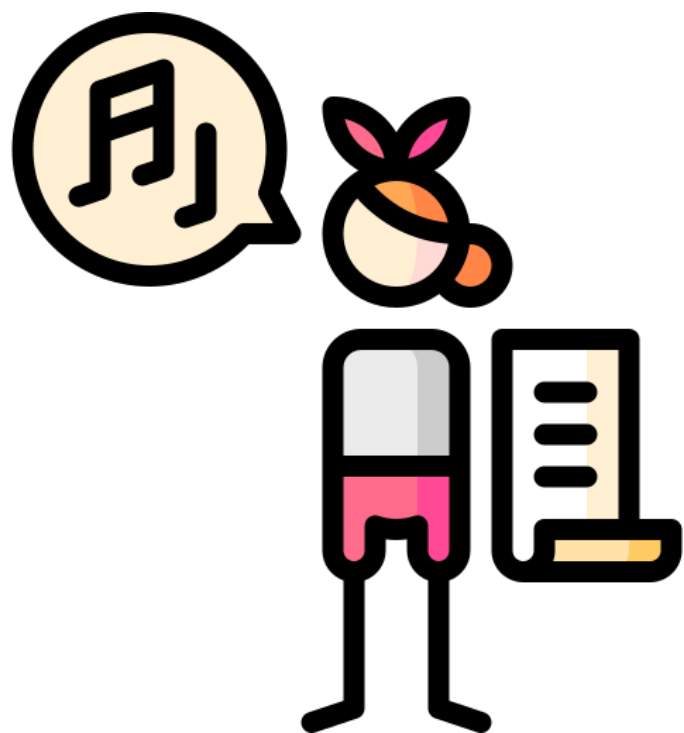
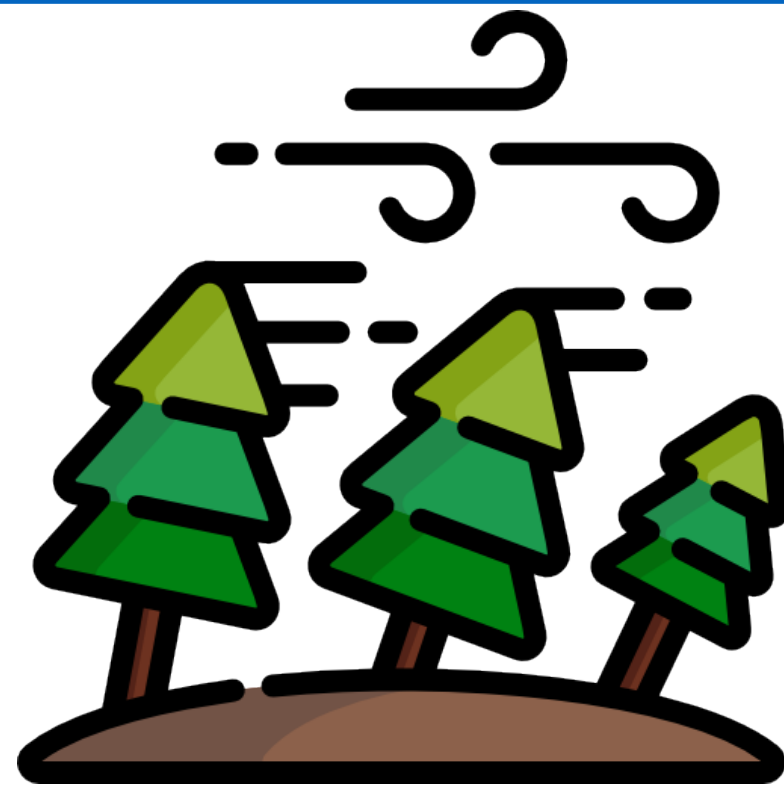
selection

An *** person or thing is typical or normal.





sway



rhyme





rule

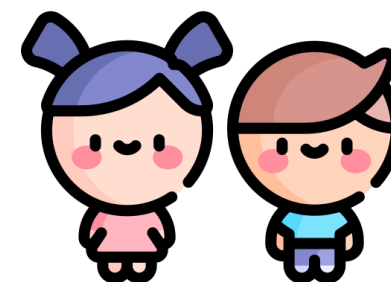


stomp





gust

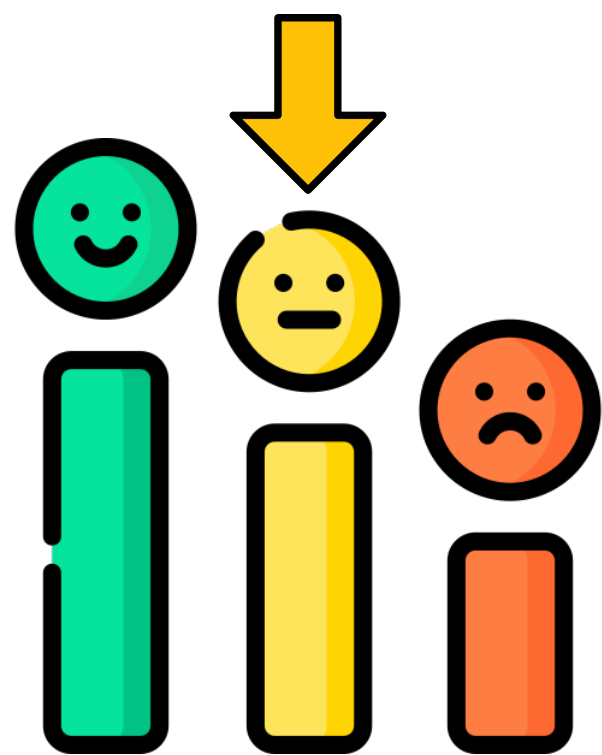


swoop





stumble



average





slumber



selection

